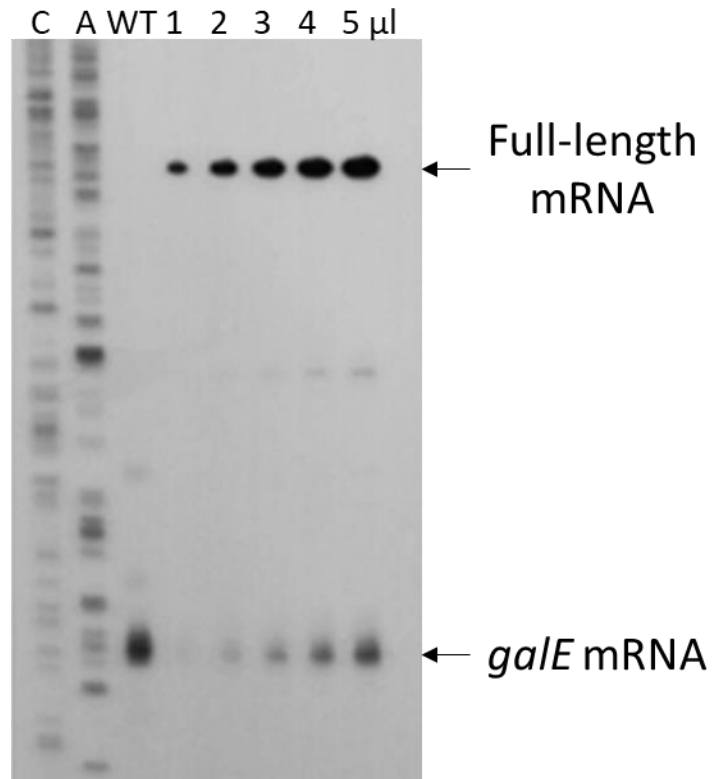


A



B

	1 μ l	2 μ l	3 μ l	4 μ l	5 μ l
Full-length mRNA	6,200	12,800	18,100	22,100	26,200
<i>galE</i> mRNA	740	1,500	2,200	3,000	3,700
SUM	6,920	14,300	20,300	25,100	29,700
Termination frequency: <i>galE</i>/SUM	10.6%	10.4%	10.8%	11.9%	8.2%