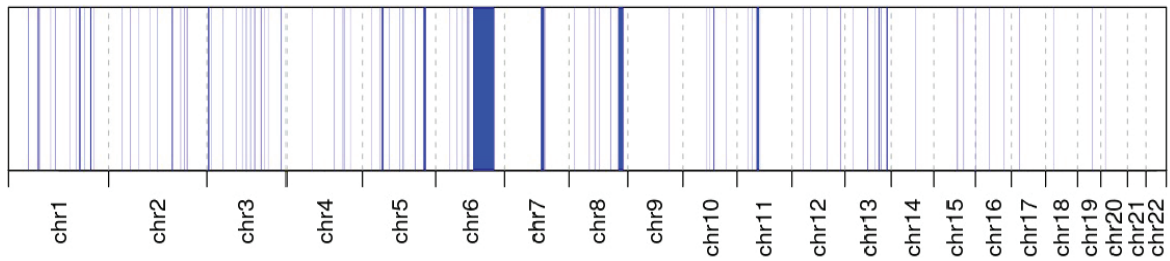
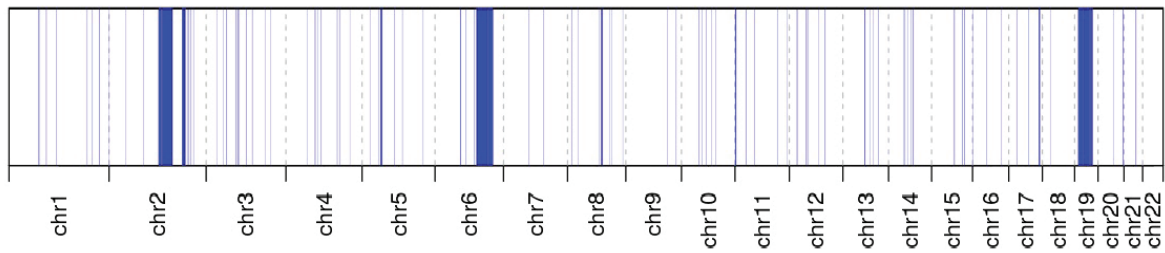


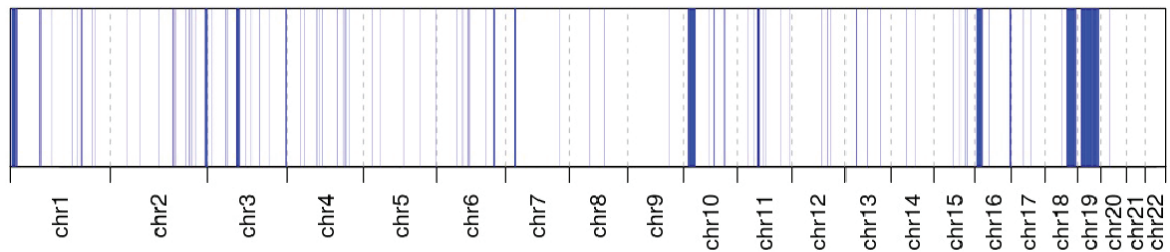
### Patient 1 (Family 1)



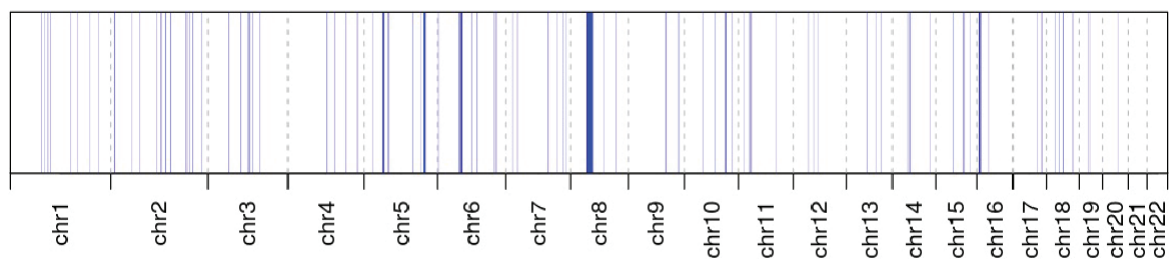
### Patient 2 (Family 1)



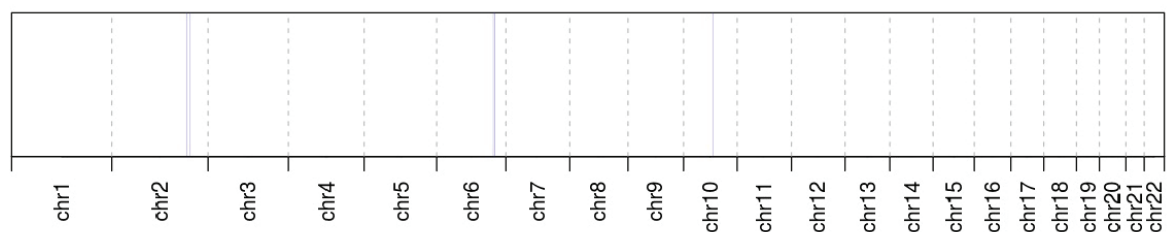
### Patient 3 (Family 1)



### Patient 4 (Family 2)



### Merged



**Supplemental Figure S1:** Homozygosity mapping of the cases analysed in this study. Cumulative sizes of ROH regions in patients 1, 2, 3 and 4 are 163.96 Mb, 195.86 Mb, 209.36 Mb, and 98.57 Mb, respectively. Common autozygous regions among affected individuals collectively span 2.6 Mb in chromosomes 2, 6 and 10.