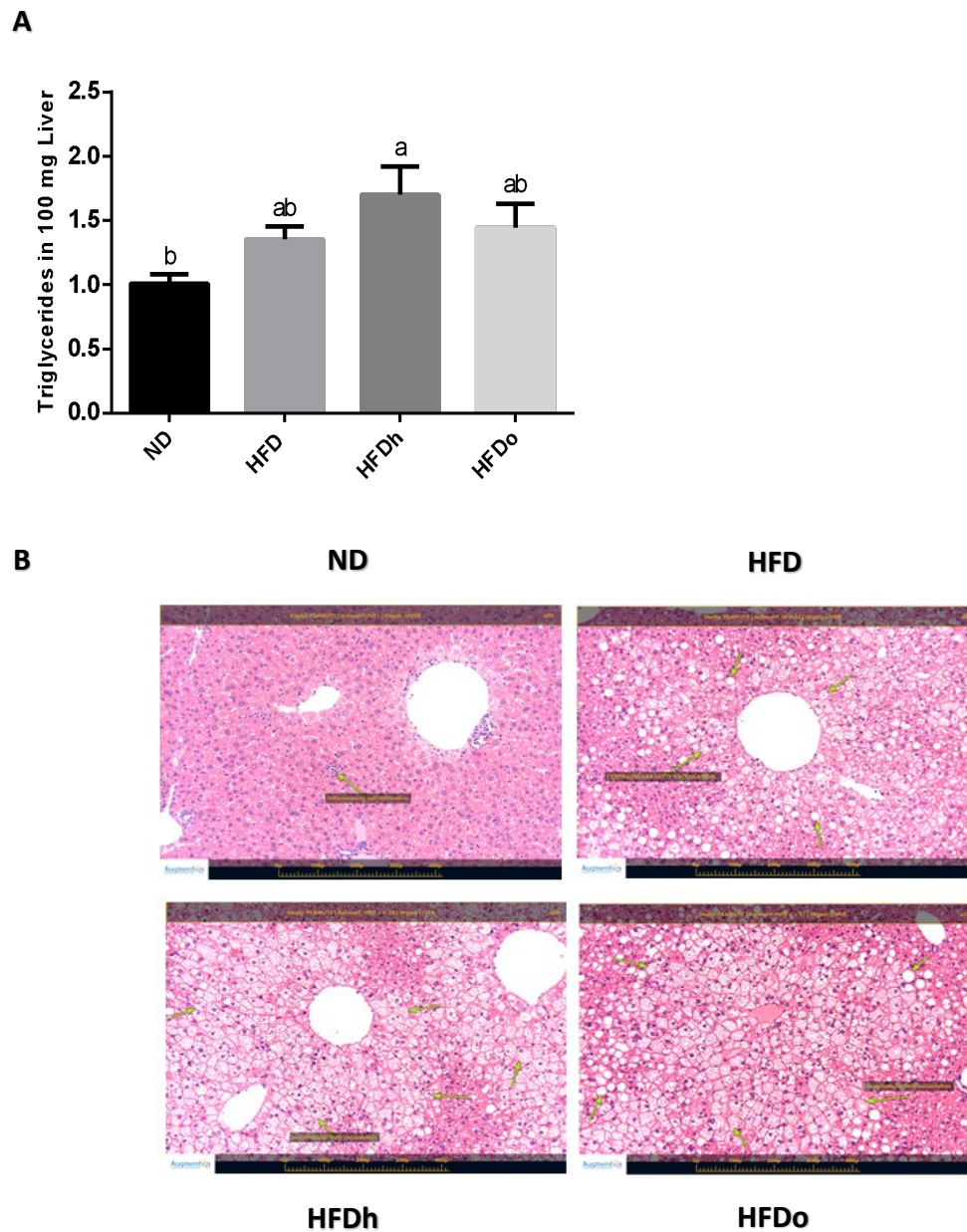


Supplementary materials:

Supplemental Fig. 1:



**Figure S1.** The effect of diets on triglycerides accumulation and histology in liver tissue. The mice consumed either a normal diet (ND), a high-fat diet (HFD), high-fat diet plus 4% (w/w) HN (HFDh) or HO (HFDo) peanuts for 18 weeks. (A)The amount of triglycerides was measured in 100mg of tissue; (B) Liver histology from the right lobe stained in H&E (magnification X 200), the green arrows indicate inflammatory cell infiltration.. A Tukey-Kramer HSD post hoc statistical test was performed. The value presented are mean  $\pm$  SE (n=8). The value displayed are mean  $\pm$  standard error. Columns marked with different letters indicate statistically significant variances at  $p < 0.05$ .