

Fig S4

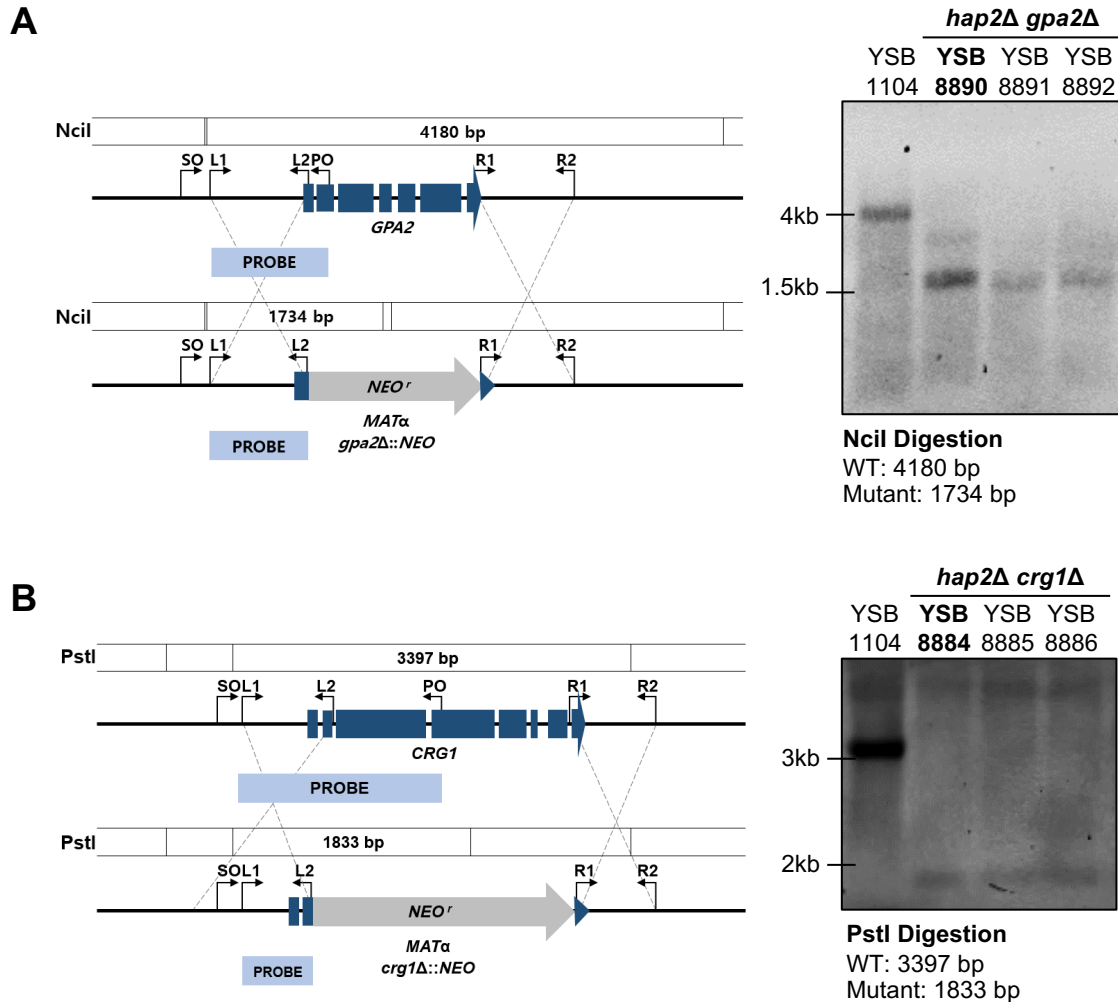


Fig. S4. The construction of *hap2Δ gpa2Δ* and *hap2Δ crg1Δ* mutant strains.

(A) Schematic representation of the *GPA2* disruption strategy and confirmation of the deletion of the *GPA2* gene in the *MATα hap2Δ* (YSB1104) mutant strain through Southern blot analysis. (B) Schematic representation of *CRG1* disruption strategy and confirmation of the deletion of the *CRG1* gene in *hap2Δ* mutant strain through Southern blot analysis.