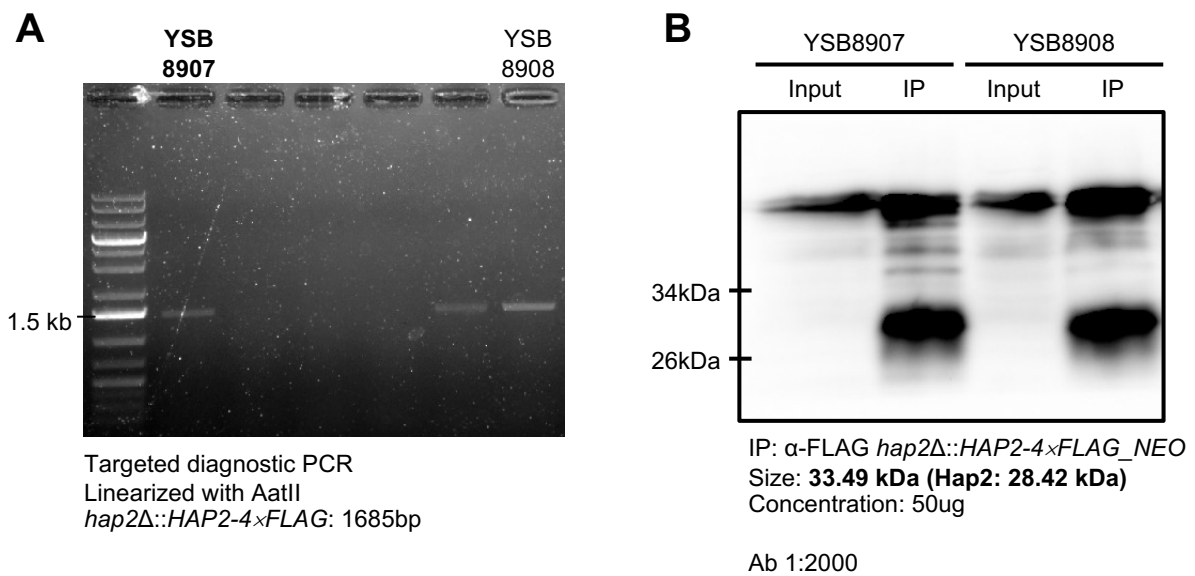


**Fig S5**



**Fig. S5. Construction of FLAG-tagged Hap2 strain**

(A) The targeted reintegration of the pHAP2-4×FLAG plasmid to *MAT $\alpha$  hap2 $\Delta$*  (YSB1104) was confirmed using diagnostic PCR. (B) The functionality of the constructed strain was tested using immunoprecipitation of the Hap2-4×FLAG protein with an anti-FLAG antibody (IP:  $\alpha$ -FLAG).