

Fig S6

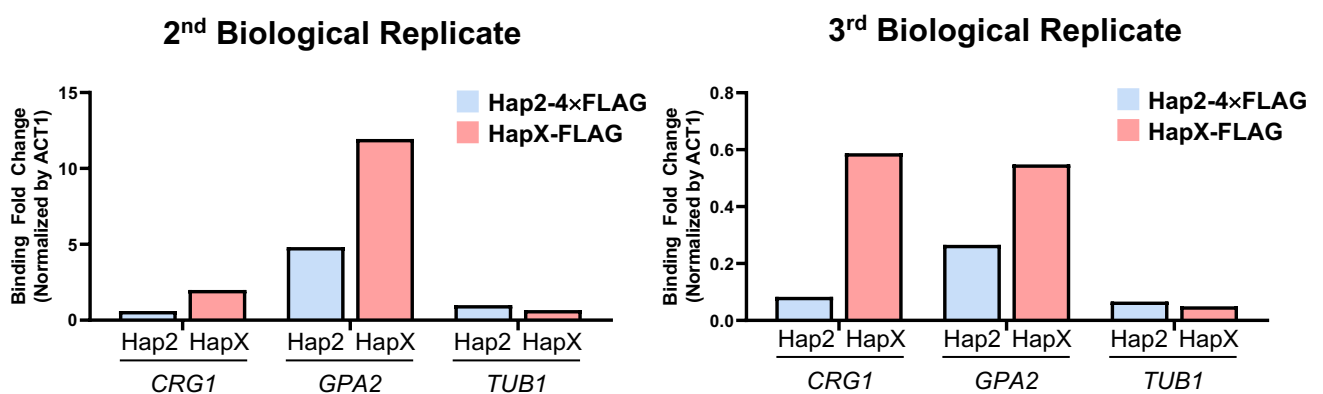


Fig S6. Binding of Hap2 and HapX to *CRG1* and *GPA2* Promoters

Three biological replicates of ChIP-qPCR were used to examine the binding of the Hap2-4xFLAG and HapX-FLAG strains to the promoters of *CRG1*, *GPA2*, and *TUB1*. ChIP-qPCR was performed under basal conditions for strains *MAT α hap2 Δ ::HAP2-4xFLAG* (YSB8907) and *MAT α hapX Δ ::HAPX-FLAG* (1). The fold changes in binding of Hap2 and HapX to *CRG1*, *GPA2*, and *TUB1* were calculated as follows: $2^{-[IP(\text{Gene-Actin}) - WCE(\text{Gene-Actin})]}$.

1. Do E, Cho YJ, Kim D, Kronstad JW, Jung WH. 2020. A transcriptional regulatory map of iron homeostasis reveals a new control circuit for capsule formation in *Cryptococcus neoformans*. *Genetics* 215:1171-1189.