

Fig S8

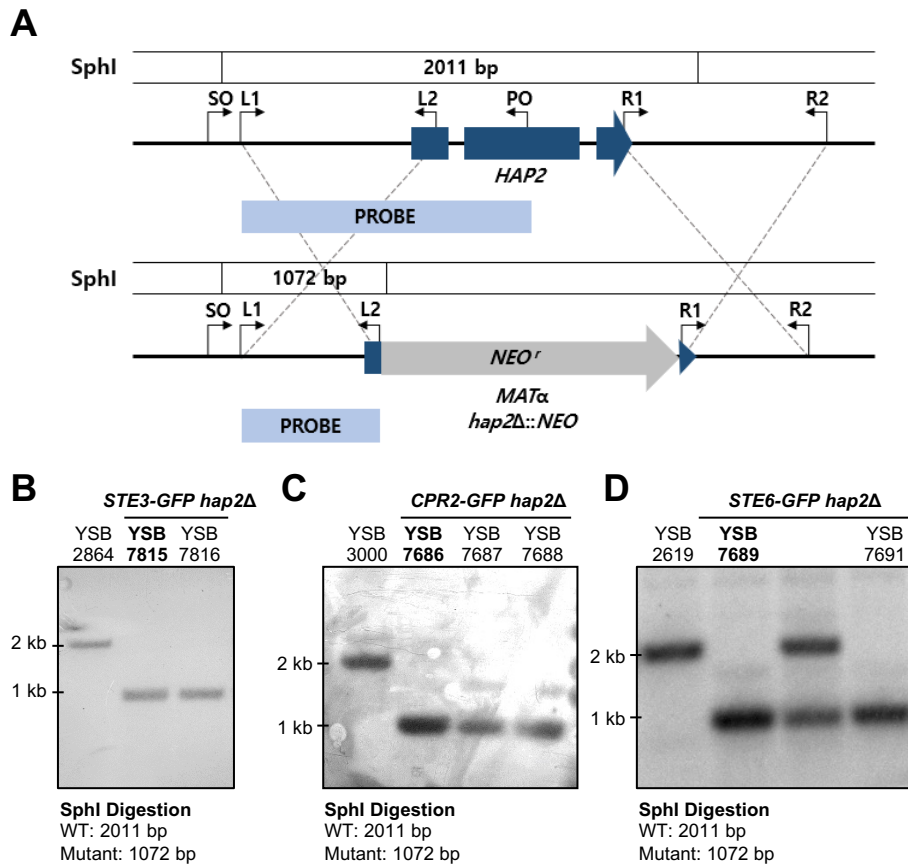


Fig S8. Construction of *STE3-GFP hap2Δ*, *CPR2-GFP hap2Δ*, and *STE6-GFP hap2Δ* mutant strains

(A) Diagram of the *HAP2* gene disruption strategy in the *MATα STE3-GFP*, *MATα CPR2-GFP*, and *MATα STE6-GFP hap2Δ* strain. (B-D) Confirmation of the *STE3-GFP hap2Δ*, *CPR2-GFP hap2Δ*, and *STE6-GFP hap2Δ* gene disruption using Southern blot analysis.