

Phylogroup

- A
- B1
- B2
- C
- D
- E
- F
- G
- Cryptic

Sequence Type

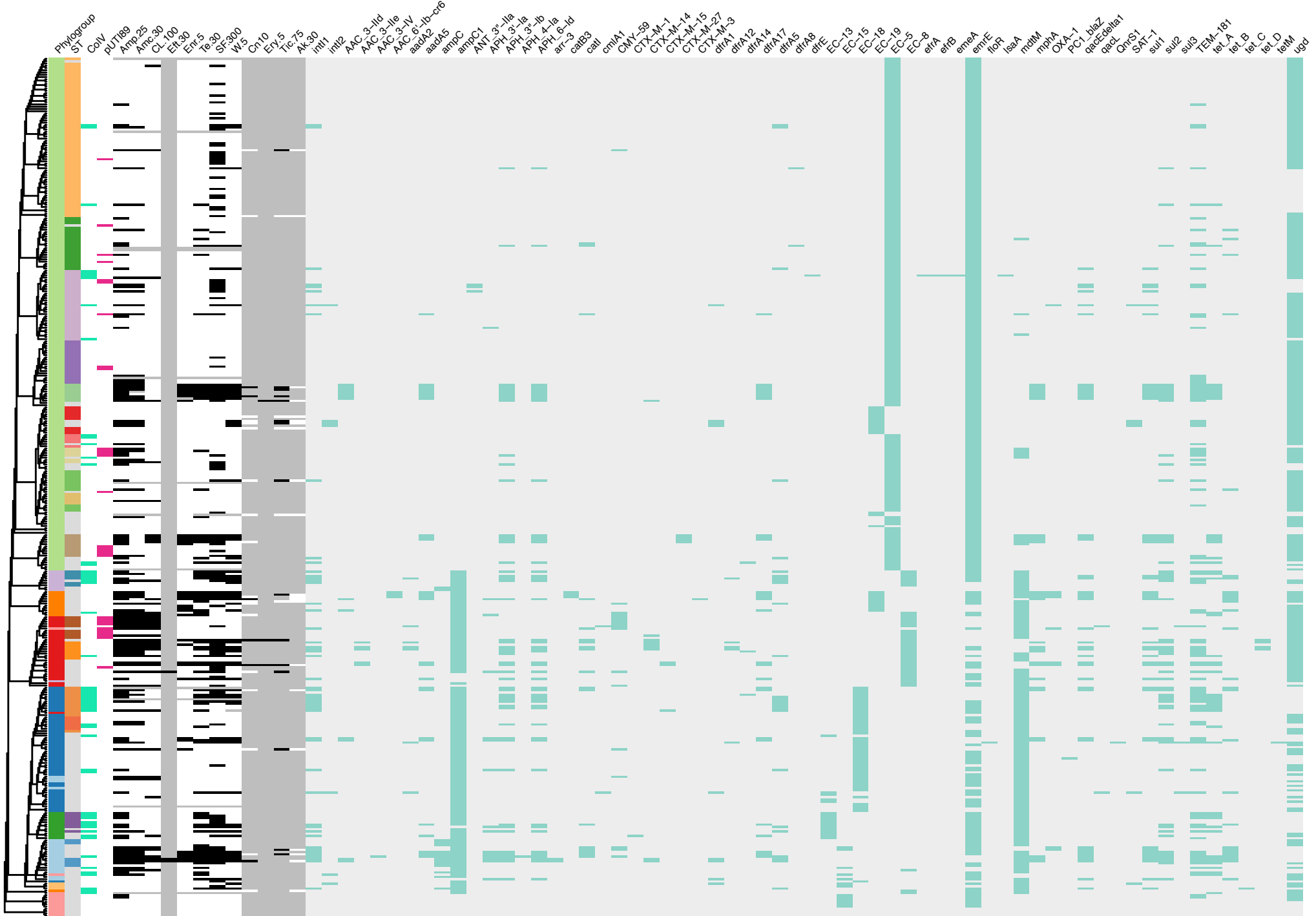
ST372	ST961
ST127	ST131
ST73	ST117
ST80	ST963
ST1193	ST38
ST141	ST58
ST135	ST155
ST95	ST88
ST12	ST10

ColV Plasmid

- Yes
- No

pUTI89-like Plasmid

- Yes
- No



Phylogroup

- A
- B1
- B2
- C
- D
- E
- F
- G
- Cryptic

Sequence Type

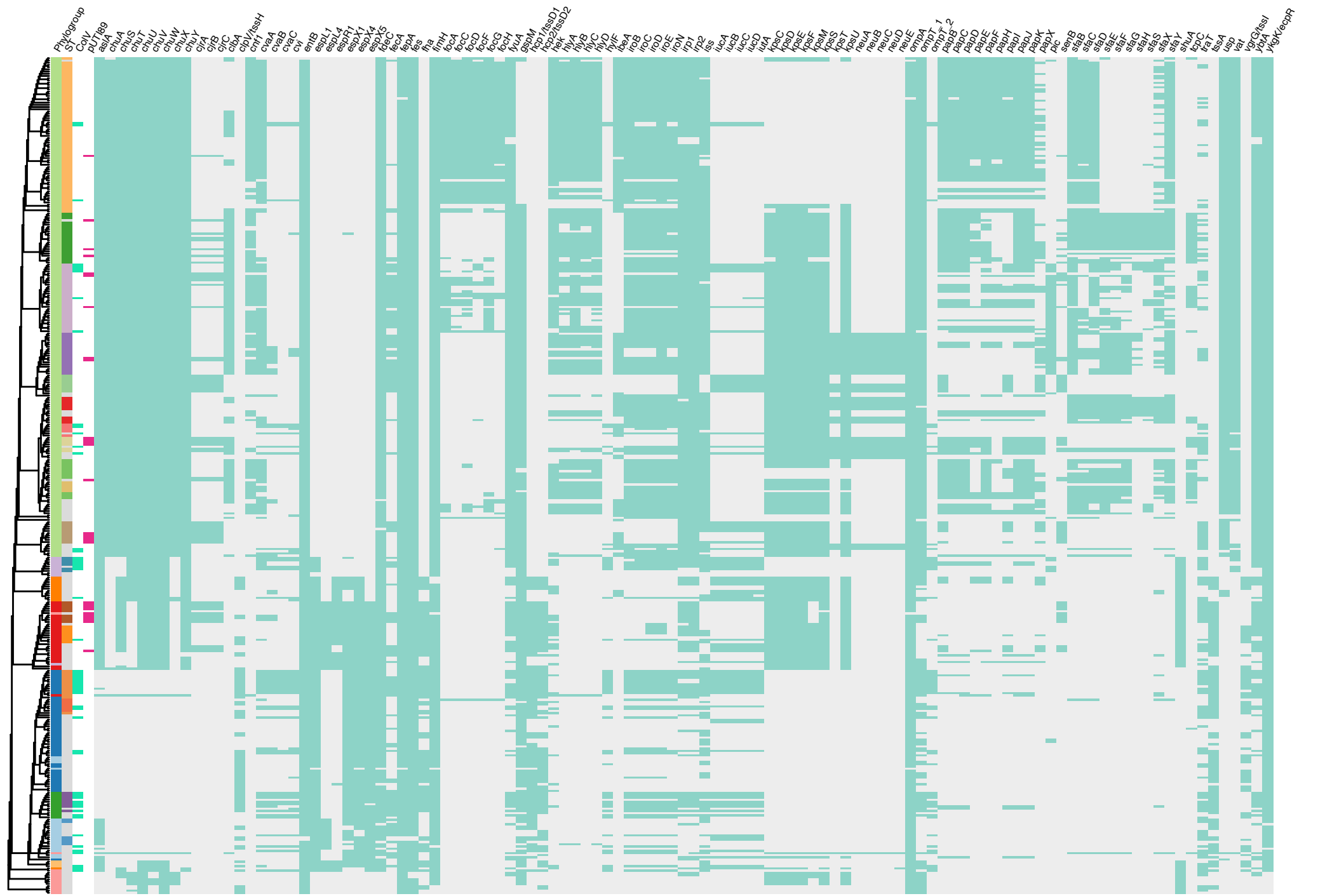
 ST372	 ST961
 ST127	 ST131
 ST73	 ST117
 ST80	 ST963
 ST1193	 ST38
 ST141	 ST58
 ST135	 ST155
 ST95	 ST88
 ST12	 ST10

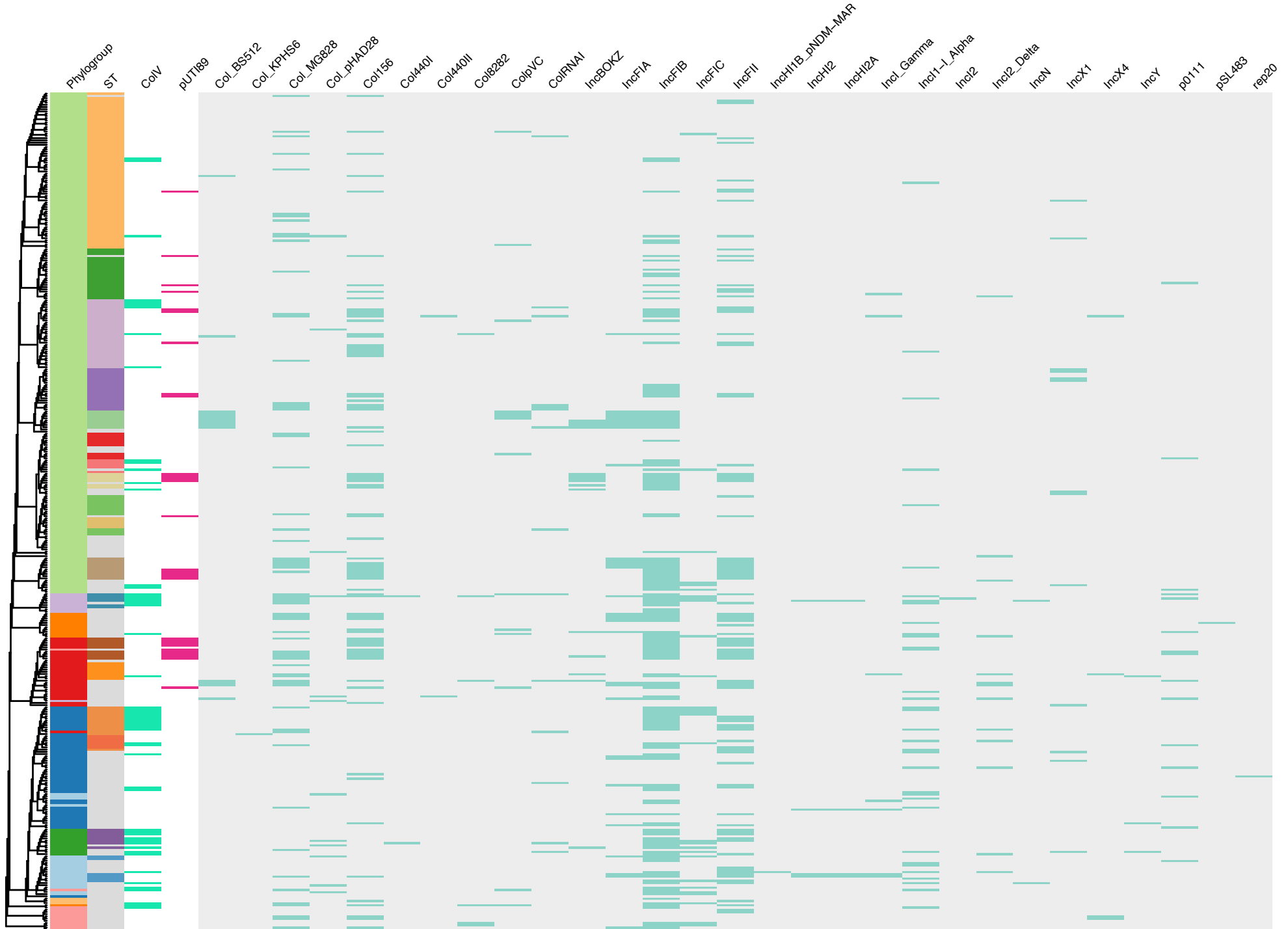
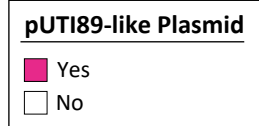
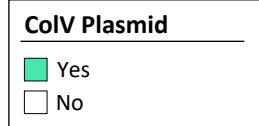
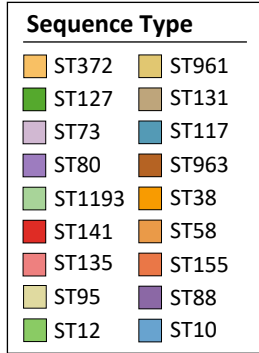
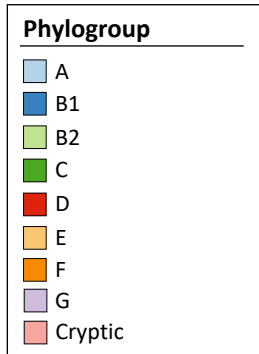
ColV Plasmid

- Yes
- No

pUT189-like Plasmid

- Yes
- No





Phylogroup (1)

- A
- B1
- B2
- C
- D
- E
- F
- G
- Cryptic

Sequence Type (2)

- ST372
- ST127
- ST73
- ST80
- ST1193
- ST141
- ST135
- ST95
- ST12
- ST961
- ST131
- ST117
- ST963
- ST38
- ST58
- ST155
- ST88
- ST10

pUTI89-like plasmid (3)

- Yes
- No

Genes

- Virulence
- Insertion sequence
- Plasmid function
- Putative function
- Hypothetical protein

BLAST Identity

- >90%



Phylogroup (1)

- A
- B1
- B2
- C
- D
- E
- F
- G
- Cryptic

Sequence Type (2)

- ST372
- ST961
- ST127
- ST131
- ST73
- ST117
- ST80
- ST963
- ST1193
- ST38
- ST141
- ST58
- ST135
- ST155
- ST95
- ST88
- ST12
- ST10

ColV plasmid (3)

- Yes
- No

Genes

- Virulence
- Insertion sequence
- Plasmid function
- Putative function
- Hypothetical protein

BLAST Identity

- >90%



Figure S1. Antimicrobial resistance heatmap. Binary heatmap of antimicrobial resistance phenotype (black/white) and resistance gene presence/absence (green/grey) aligned to core gene phylogeny with metadata.

Figure S2. Virulence-associated gene heatmap. Binary heatmap of virulence-associated gene presence/absence (green/grey) aligned to core gene phylogeny with metadata.

Figure S3. Plasmid-associated gene heatmap. Binary heatmap of plasmid-associated gene presence/absence (green/grey) aligned to core gene phylogeny with metadata.

Figure S4. Sequence mapping to pUTI89. Heatmap of nucleotide identity across 100bp segments of the pUTI89 backbone. Metadata for phylogroup and ST are shown. Pink metadata bars show isolates matching at least 90% of the backbone and/or carrying F29:A-B10 RST.

Figure S5. Sequence mapping to pCERC4. Heatmap of nucleotide identity across 100bp segments of the pCERC4 backbone. Metadata for phylogroup and ST are shown. Green bars show isolates determined to carry a CoIV plasmid based on the Liu criteria (see Methods).