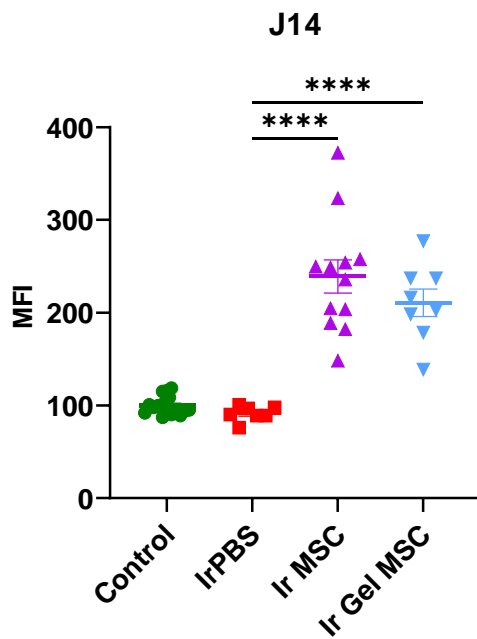
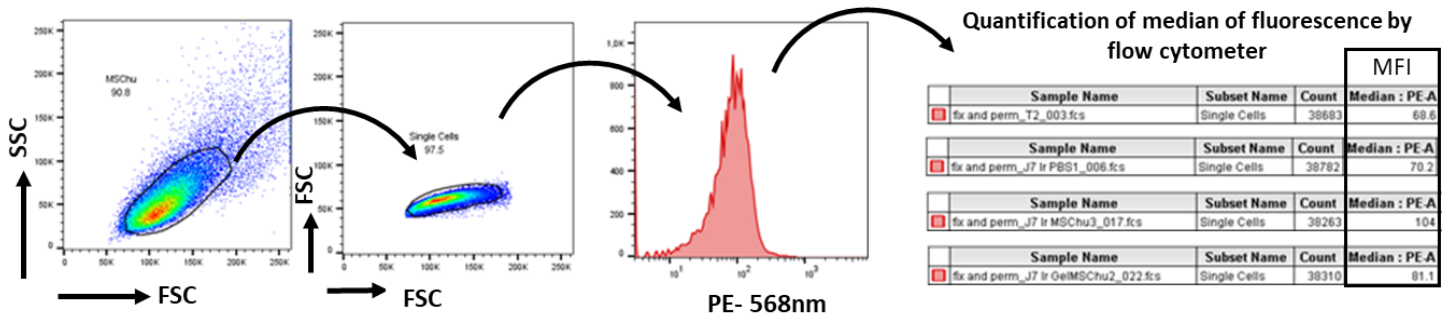


Supplementary Data 1. Schematic diagram of the gating procedure for flow cytometry analyses. Hu- MSC were visualized according to SSC (granularity) and FSC (size) using BD Bioscience flow cytometer. Then, median of Phycoerythrin (PE) fluorescence was quantified on cells in singlet.



Supplementary Data 2. Scatter plot representing the relative quantity of antibodies in plasma detected in each group of rats 14 days after injection of hu- MSC by measuring the median fluorescence intensity detected using flow cytometry following permeabilization of the cells. Control = non-irradiated non-injected rats ($n=16$ animals per group); Ir PBS = irradiated and PBS 1x-injected rats ($n=7$); Ir MSC = irradiated and hu- MSC-injected rats ($n=12$); Ir Gel MSC = irradiated and Si-HPMC embedded hu- MSC-injected rats ($n=8$). Statistic **** $p<0.001$.