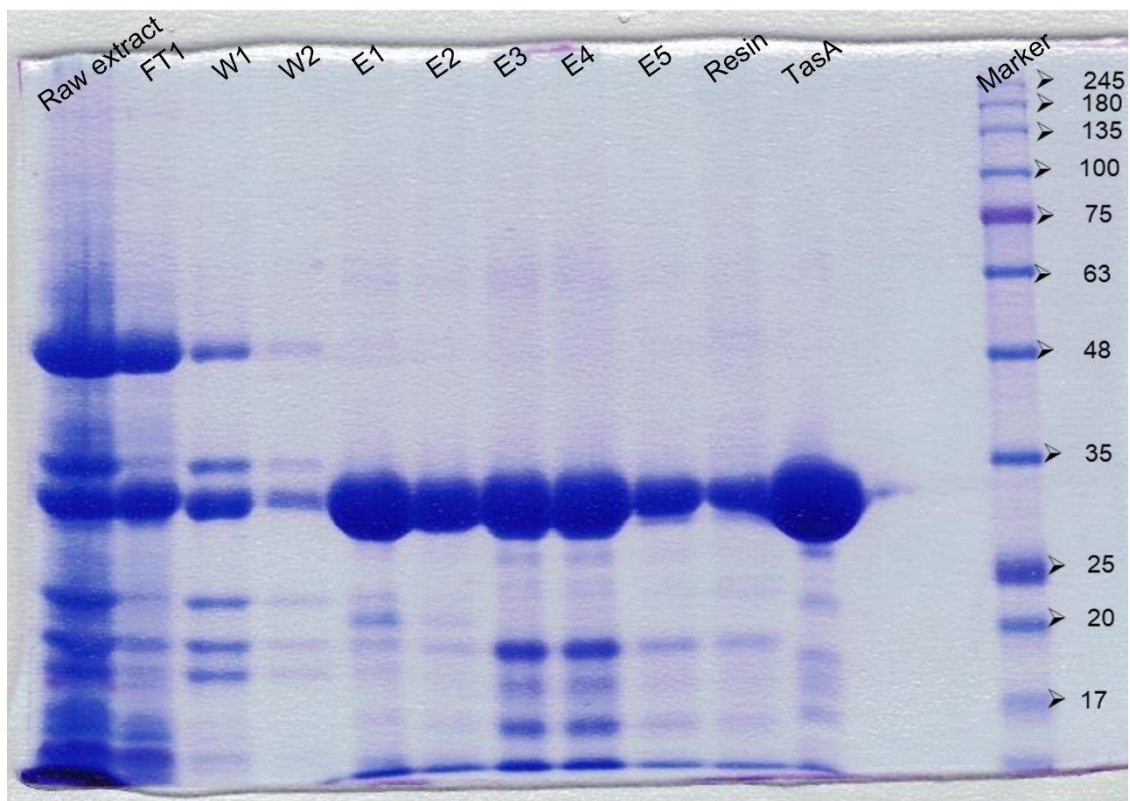


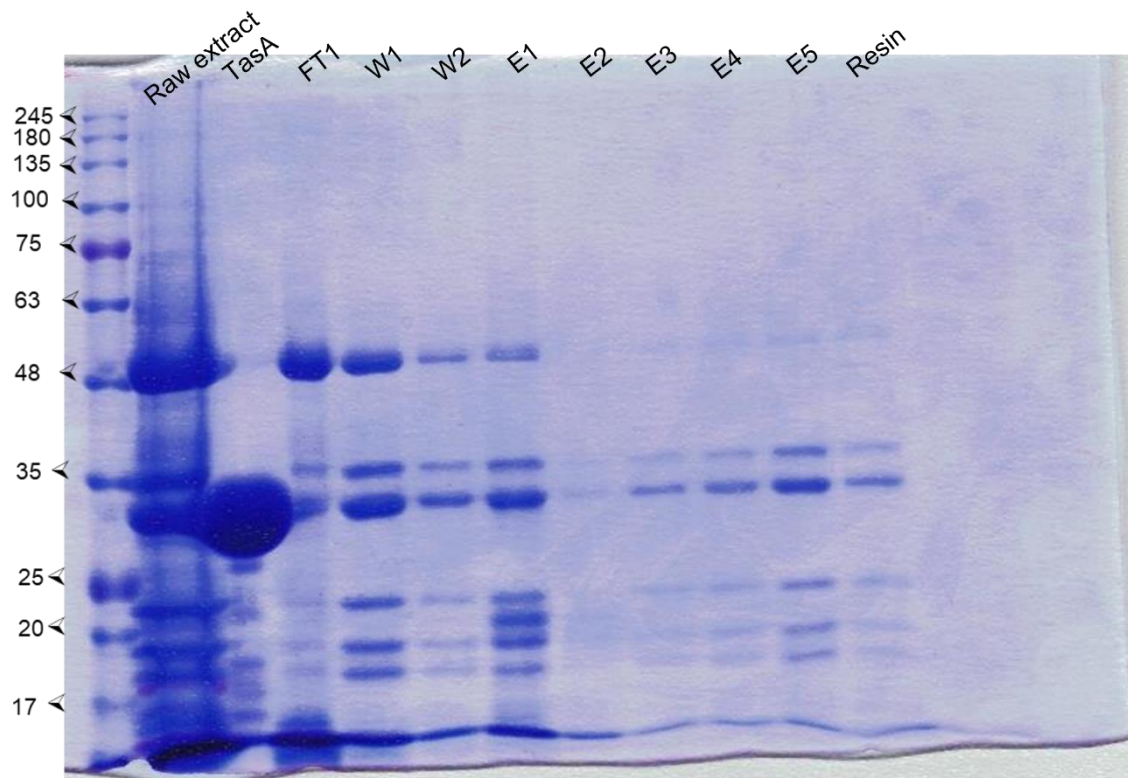
Source Data File Figure 4

Pull down assay. SDS-PAGE Protein gel, Commasie Brilliant Blue staining (FT: Flow trough, W: wash, E: elution). Units of the molecular weight marker are kDa.

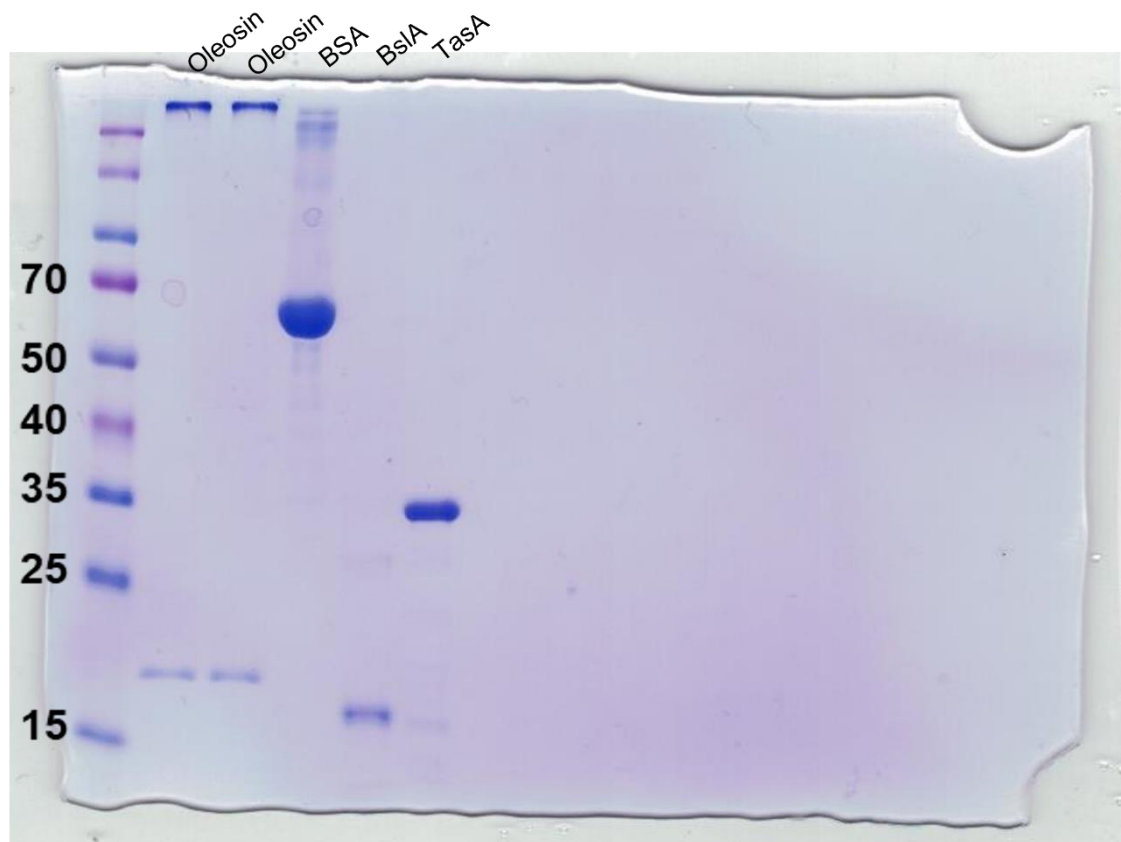


Pull down assay. SDS-PAGE Protein gel, Commasie Brilliant Blue staining. Negative control: no TasA added to the resin.

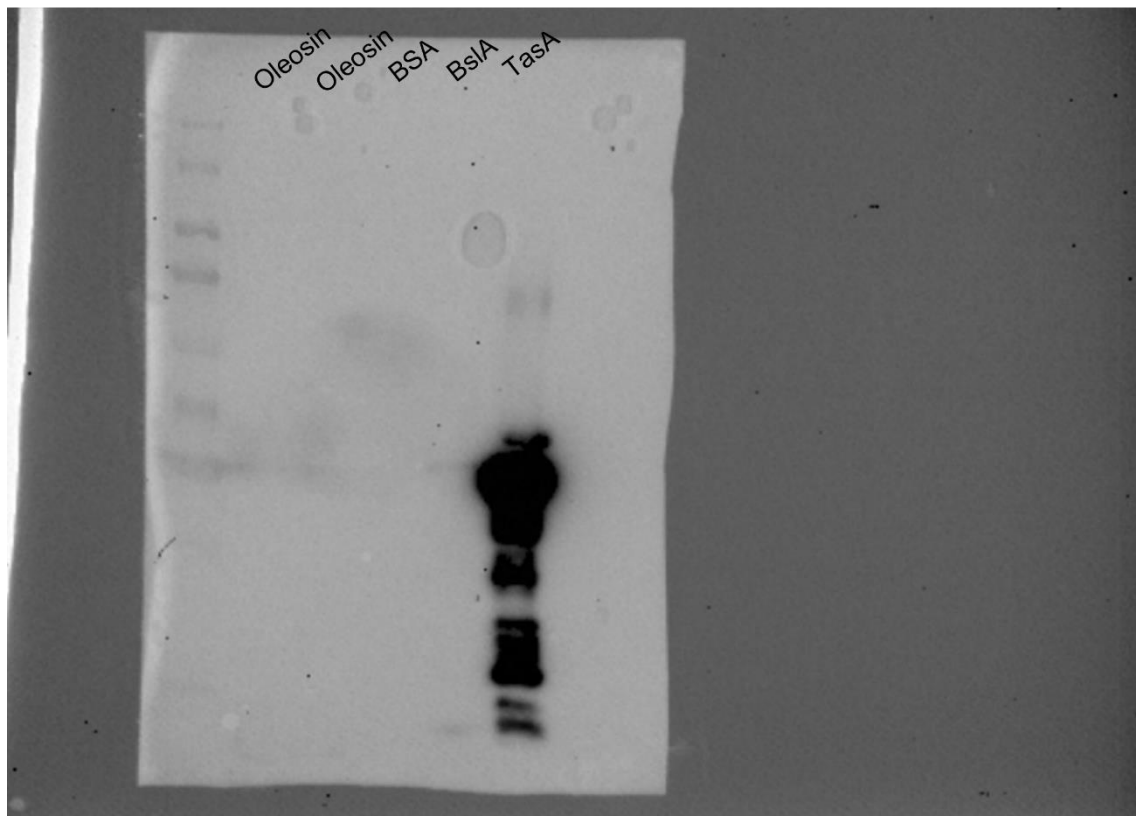
(FT: Flow trough, W: wash, E: elution). Units of the molecular weight marker are kDa.



Far Western Blot assay. SDS-PAGE Protein gel, Commasie Brilliant Blue staining. Units of the molecular weight marker are kDa.



Far Western Blot assay. SDS-PAGE Protein gel transferred to PVDF membrane.
Western Blot using an anti-TasA antibody (1:20.000).



Far Western Blot assay. SDS-PAGE Protein gel transferred to PVDF membrane. Western Blot using an anti-TasA antibody (1:20.000) after renaturing of the proteins and membrane incubation with TasA as a bait protein.

