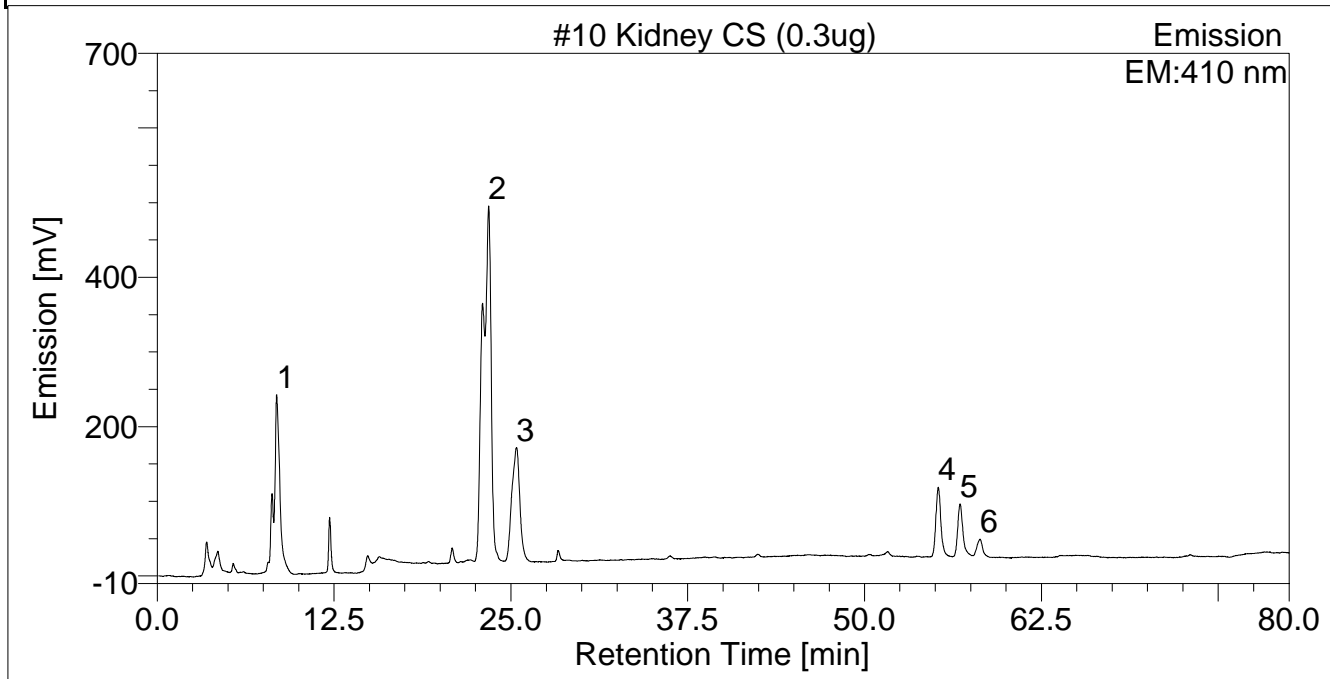


**33 #10 Kidney CS (0.3ug)**

Sample Name:	#10 Kidney CS (0.3ug)	Injection Volume:	50.0
Vial Number:	7	Channel:	Emission
Sample Type:	unknown	Run Time (min):	n.a.
Control Program:	Con Dis UV FL 22 D rev	Sequence:	080110
Quantif. Method:	ConDiss		
Recording Time:	7/10/2010 4:02		
Directory:	GLYCO-DX600_1\Glycotechnology\2010\CS Analysis\Hinsdale		



No.	Ret.Time min	Peak Name	Height mV	Area mV*min	Rel.Area %	Amount pMol
1	8.44	UA-GalNAc (D0a0)	240.342	120.152	19.39	82.294
2	23.43	UA-GalNAc-4S (D0a4)	474.247	324.940	52.43	235.581
3	25.39	UA-GalNAc-6S (D0a6)	152.476	99.491	16.05	362.535
4	55.21	UA-2A-GalNAc-4S (D2a4)	92.977	37.816	6.10	43.599
5	56.75	UA-2A-GalNAc-6S (D2a6)	69.195	27.812	4.49	13.126
6	58.15	UA-GalNAc-4S-6S (D0a10)	22.343	9.512	1.53	15.960
<b>Total:</b>			1051.580	619.724	100.00	753.094