

Supplementary Information

Impaired oxygen-sensitive regulation of mitochondrial biogenesis within the von Hippel-Lindau syndrome.

Shuijie Li^{1,2§}, Wenyu Li^{1*}, Juan Yuan^{1*}, Petra Bullova¹, Jieyu Wu¹, Xuepei Zhang³, Yong Liu³, Monika Plescher¹, Javier Rodriguez⁴, Oscar C. Bedoya-Reina¹, Paulo R. Jannig⁵, Paula Valente-Silva⁵, Meng Yu⁶, Marie Arsenian Henriksson¹, Roman A. Zubarev³, Anna Smed Sörensen⁶, Carolyn K. Suzuki⁷, Jorge L. Ruas⁵, Johan Holmberg⁸, Catharina Larsson⁹, C. Christofer Juhlin⁹, Alex von Kriegsheim⁴ and Yihai Cao¹, Susanne Schlisio^{1§}

¹Department of Microbiology, Tumor and Cell Biology, Karolinska Institutet, Stockholm, Sweden

²College of Pharmacy, Harbin Medical University, Harbin, 150081 China

³Department of Medical Biochemistry and Biophysics, Stockholm, Sweden

⁴Edinburgh Cancer Research Centre, IGMM, University of Edinburgh, Edinburgh, UK

⁵Department of Physiology and Pharmacology, Karolinska Institutet, Stockholm, Sweden

⁶Department of Medicine, Karolinska University Hospital, Stockholm; Sweden

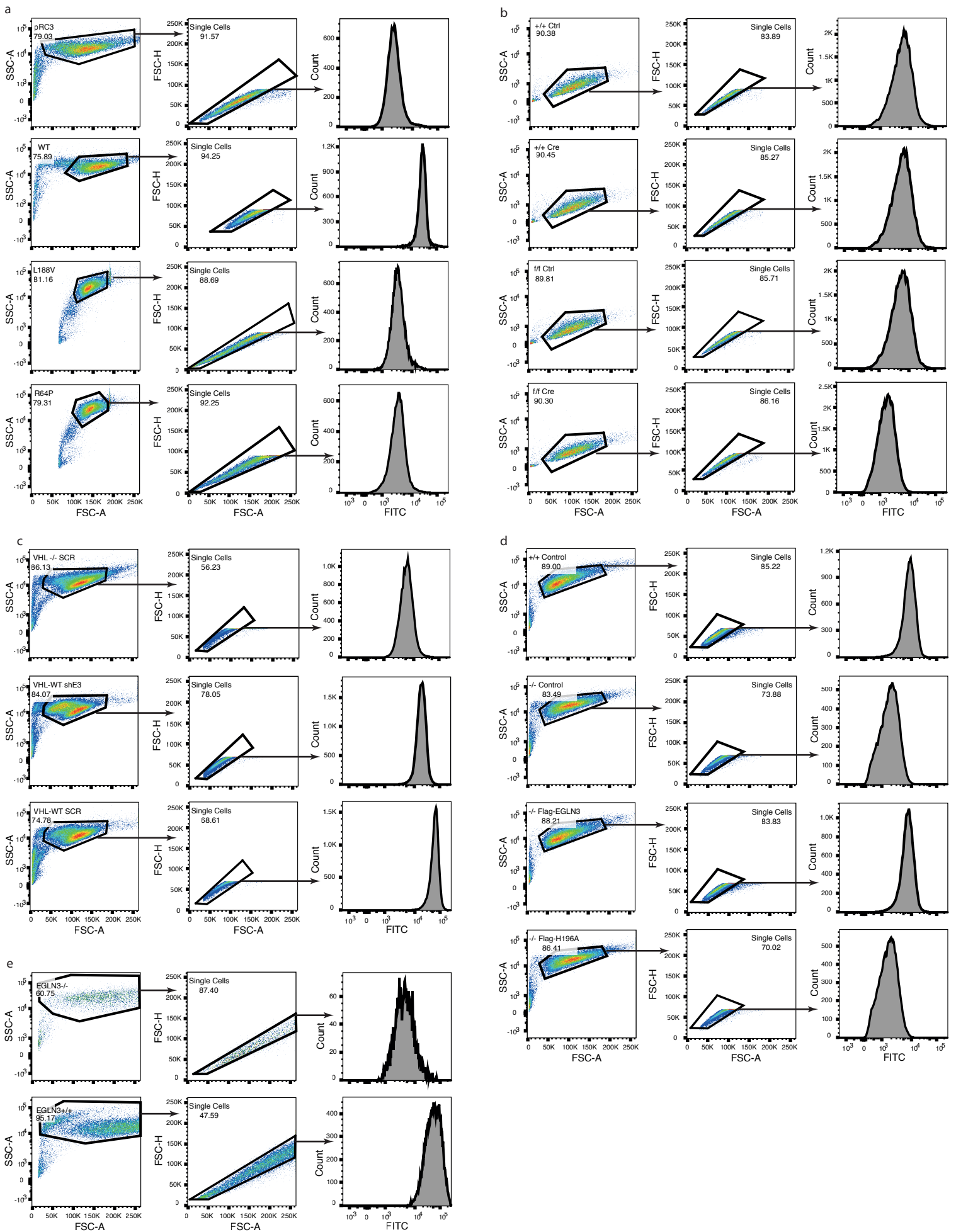
⁷Department of Biochemistry and Molecular Biology, New Jersey Medical School, University of Medicine and Dentistry of New Jersey, Newark, NJ 07103, USA

⁸Department of Molecular Biology, Faculty of Medicine, Umeå University, Umeå, Sweden.

⁹Department of Oncology-Pathology, Karolinska Institutet, Karolinska University Hospital, SE-17176 Stockholm, Sweden

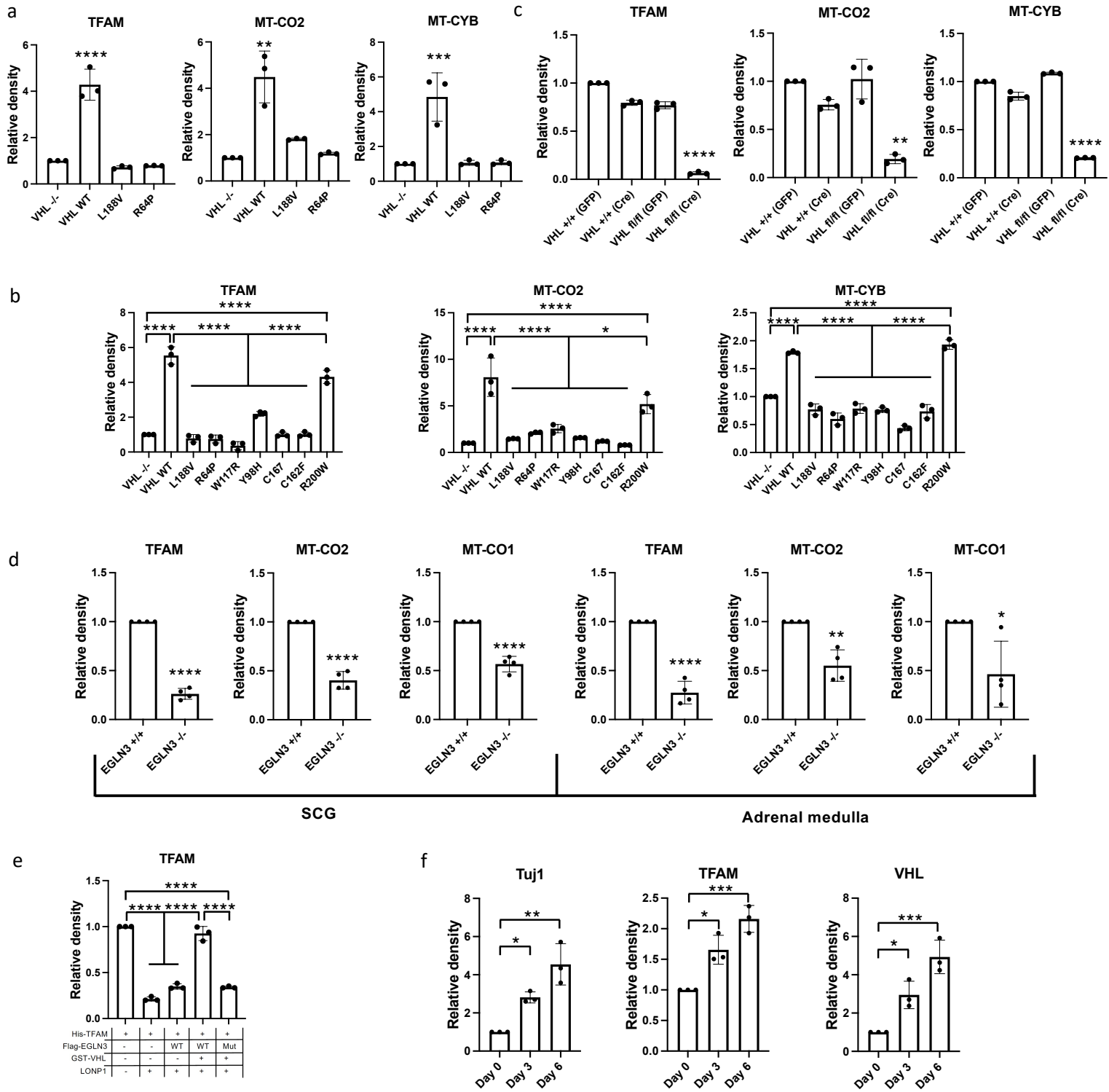
* These authors contributed equally to this work

§ Corresponding authors: Shuijie Li (shuijie.li@ki.se), Susanne Schlisio (susanne.schlisio@ki.se)



Supplementary Figure 1: FACS sequential gating strategies. Representative gating strategy of (a) Figure 1f, (b) Figure 1k, (c) Figure 2d, (d) Figure 2g and (e) Extended Data Fig. 2g. Briefly, fluorescence intensity was identified from single cells of each cell lines by flow cytometry.

Supplementary Figure 2



Supplementary Figure 2: Quantification of western blots.

a (Fig. 1e), b (Fig. 1i), c (Fig. 1j), e (Fig. 5g), f (Fig. 7b): Data are presented as mean values \pm SD. Error bars show standard deviations (SD). One way ANOVA Tukey's Multiple Comparison Test. **** $p < 0.0001$, *** $p < 0.001$, ** $p < 0.01$, * $p < 0.05$. a (Fig. 1e): $p = 0.0017$, $p = 0.0008$. b (Fig. 1i): $p = 0.0147$. c (Fig. 1j): ** $p = 0.001$. e (Fig. 5g): **** $p < 0.0001$.

f (Fig. 7b): $p = 0.0325$, $p = 0.0013$; $p = 0.012$, $p = 0.0007$; $p = 0.0253$, $p = 0.0008$.

d (Fig. 2e): Data are presented as mean values \pm SD. Error bars show standard deviations (SD). Two-tailed unpaired t test. **** $p < 0.0001$, ** $p = 0.0014$, * $p = 0.0191$.