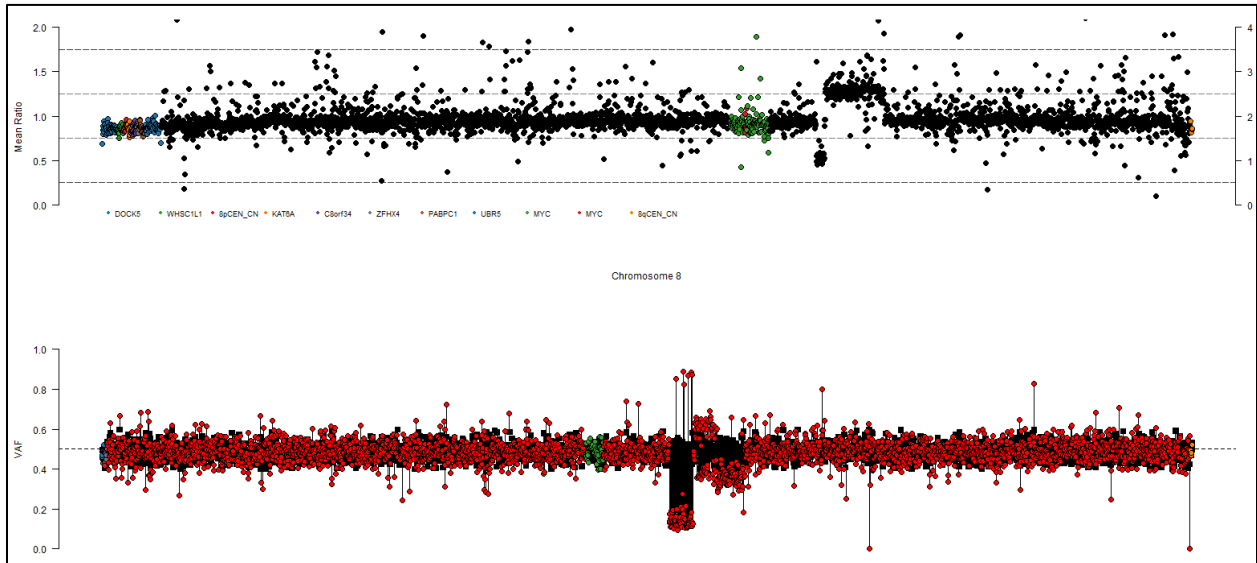
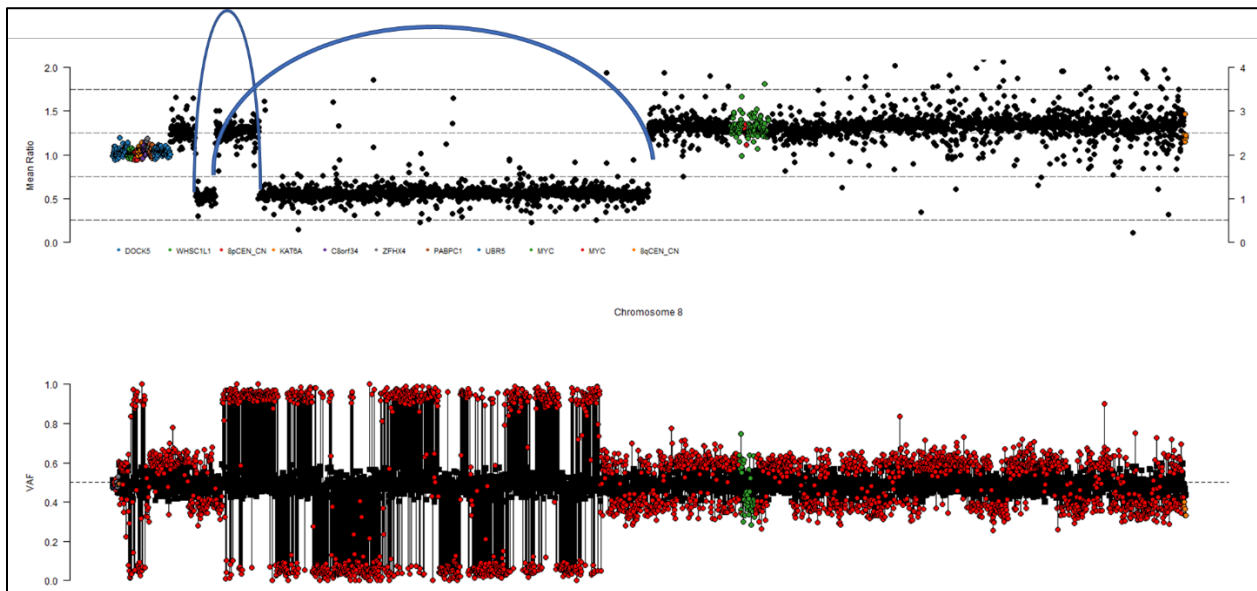


**Supplementary Figure 5.** Examples of copy number abnormalities and SNP allele frequencies in proximity to *MYC* at 8q24. *MYC* is located in the green block. Copy number and SNP profiles do not align along the x-axis.

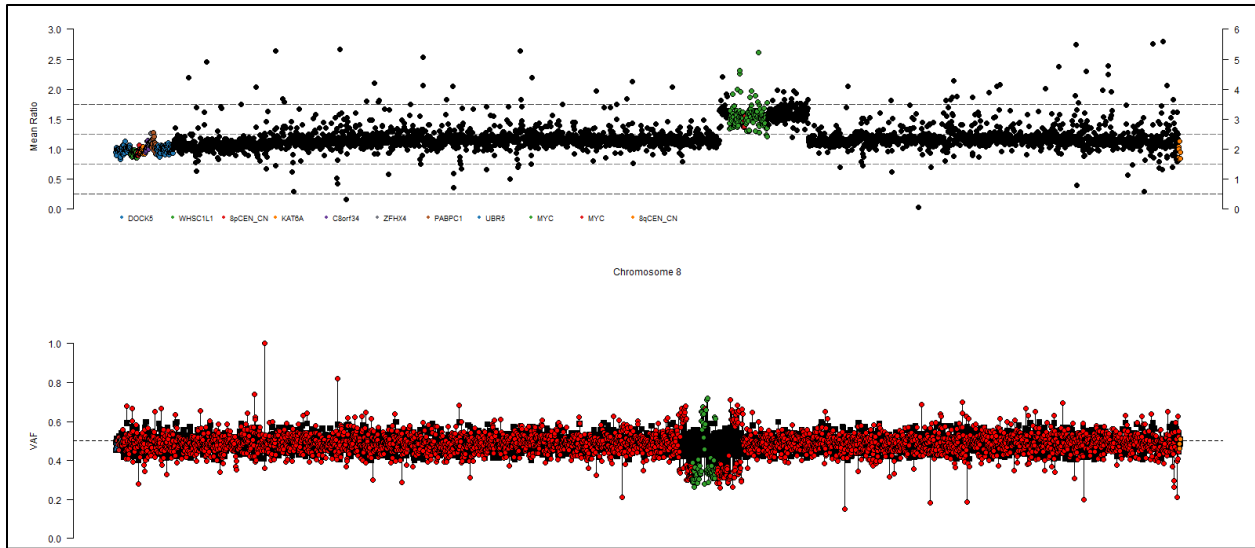
- A. A sample with a deletion and a gain of chromosomal material telomeric of *MYC*. The gain is situated in a region that also has a t(2;8) with the IgK locus.



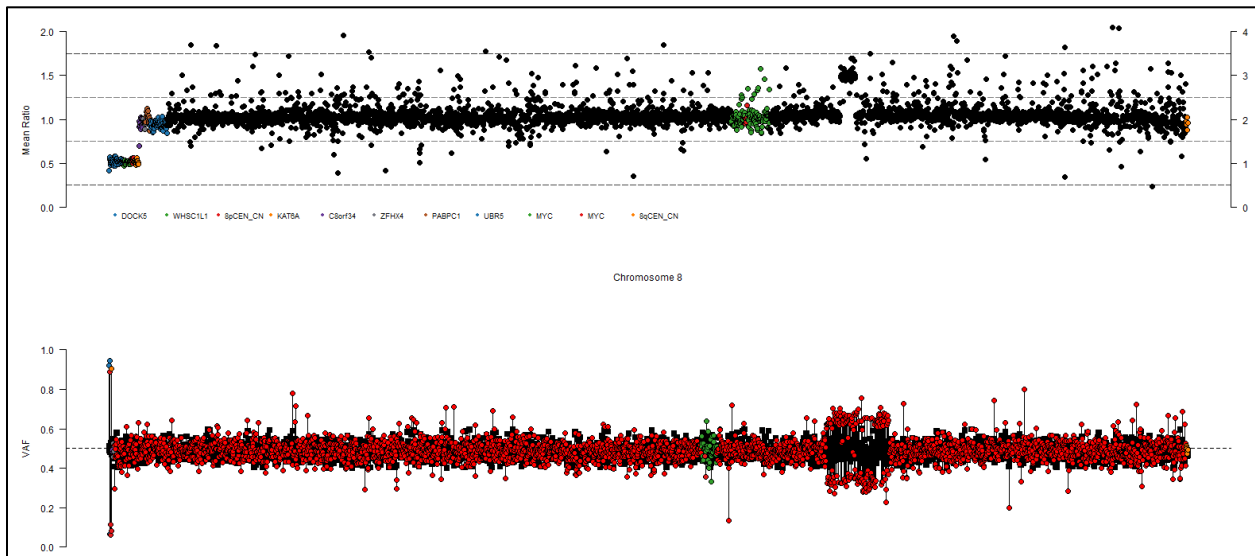
- B. A sample with two deletion events centromeric of *MYC* caused by two translocation events (shown as arcs).



- C. Gain of copy number at the *MYC* locus with translocation breakpoints detected at either end of the gained segment resulting in a t(1;8) and insertion of *MYC* at the *FAM46C* locus.



- D. Gain of copy number telomeric of *MYC* with translocation breakpoints detected at either end of the gained segment resulting in a t(8;22) to the IgL locus.



- E. A deletion event telomeric of *NSMCE2* and centromeric of *MYC*, placing *MYC* next to the super-enhancer of *NSMCE2*.

