

Figure S1

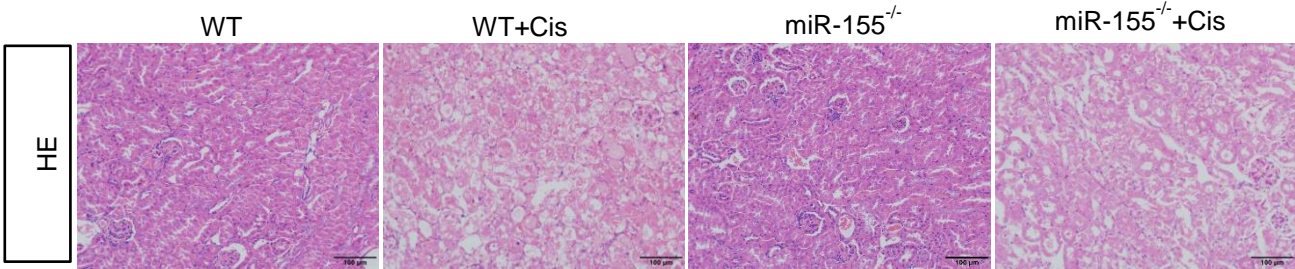


Figure S1. Representative kidney histology as shown by HE staining 72 h after saline or cisplatin injection.

Figure S2

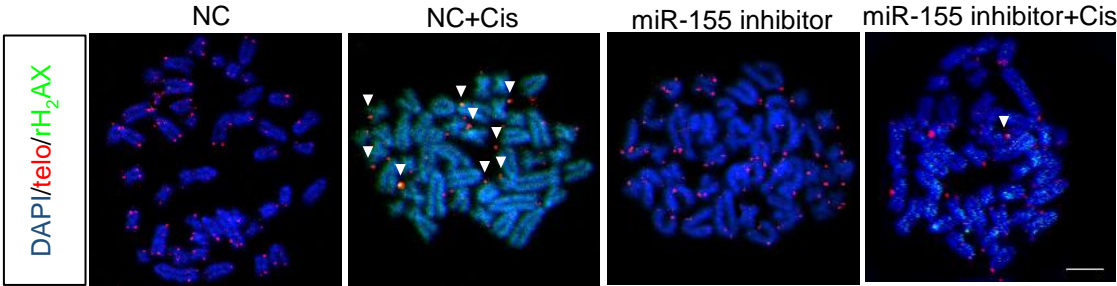


Figure S2. Telomere DNA damage in TECs treated with cisplatin, as demonstrated by the co-localization of γ H2AX (green) and telomeres (red) in the immunofluorescence. White arrows indicate TIFs. Scale bars: 10 μ m. TIFs, telomere dysfunction induced foci.

Figure S3

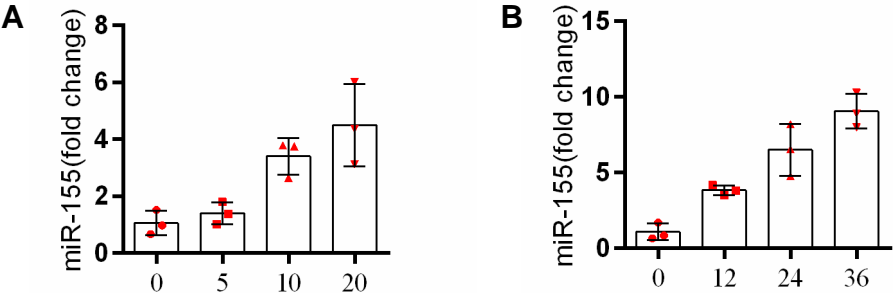


Figure S3. (A) qPCR of miR-155 in HK-2 cells (n = 3). HK-2 cells were treated with cisplatin 0, 5, 10, 20 μ M for 24 h. (B) qPCR of miR-155 in HK-2 cells (n = 3). HK-2 cells were treated with cisplatin 20 μ M for 0, 12, 24, 36 h.

Figure S4

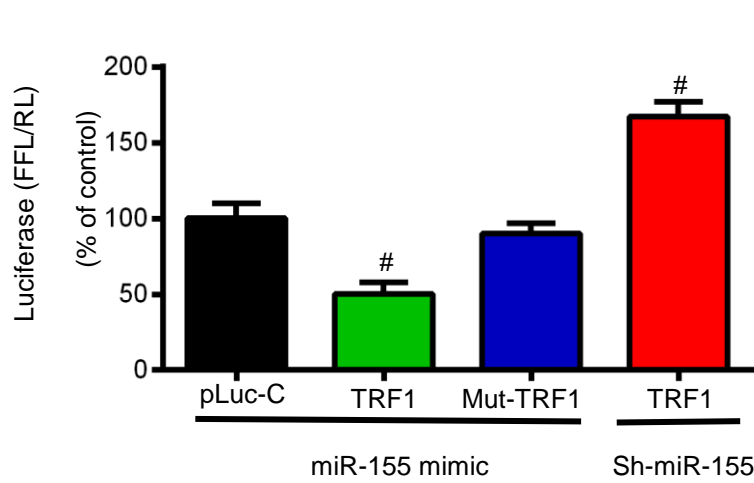
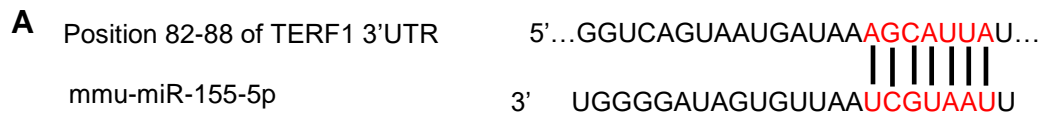
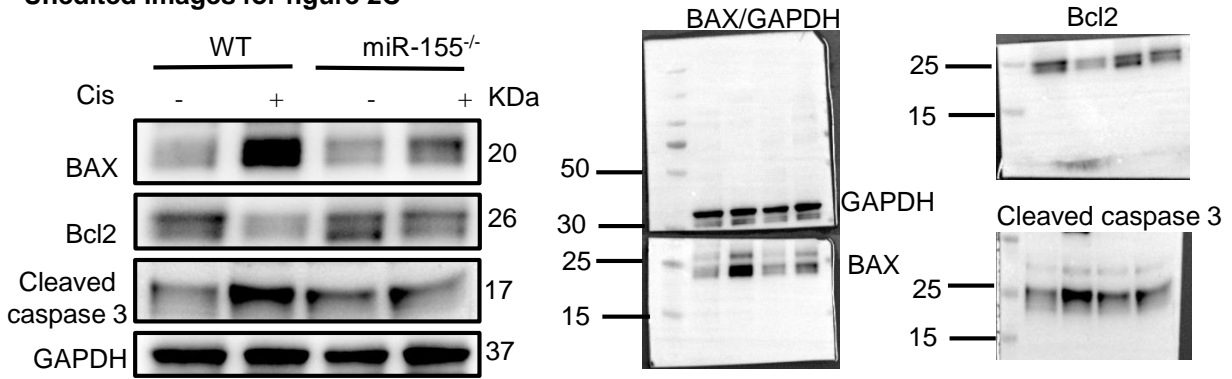
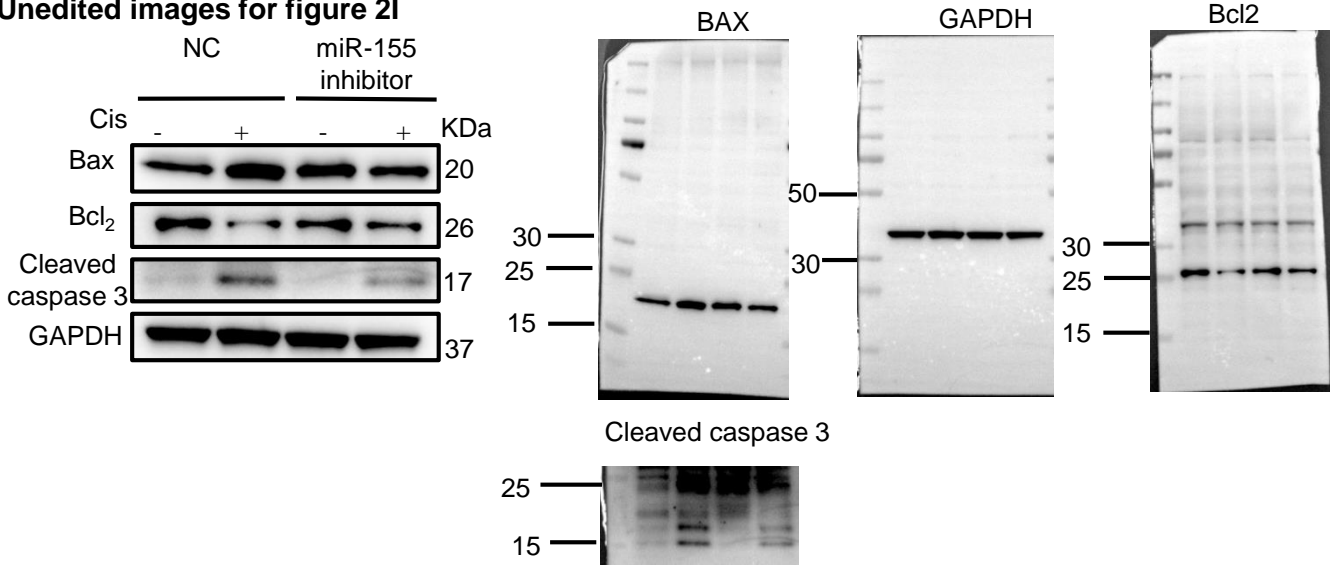


Figure S4. mmu-miR-155 targets TRF1. (A) The schematic diagram depicted the predicted binding site of mmu-miR-155 targeting the 3'-UTR of TRF1. (B) Luciferase reporter assay determined TRF1 as a bona fide target of miR-155 (n = 3). pLuc-ctrl (pMIR-REPORT luciferase); Mut, mutant; The data represent the mean \pm SD; # P < 0.05 versus mimic control.

Unedited images for figure 2C

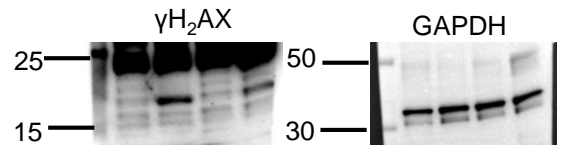
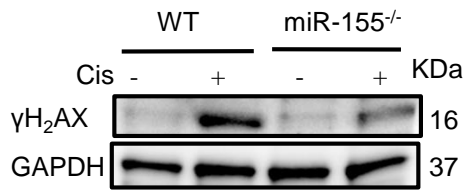


Unedited images for figure 2I

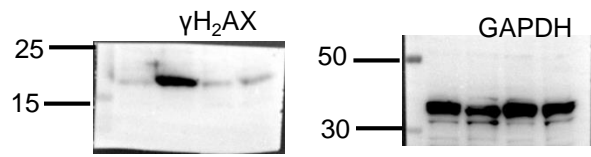
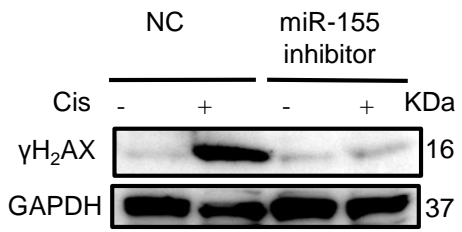


Original data 2.

Unedited images for figure 3C

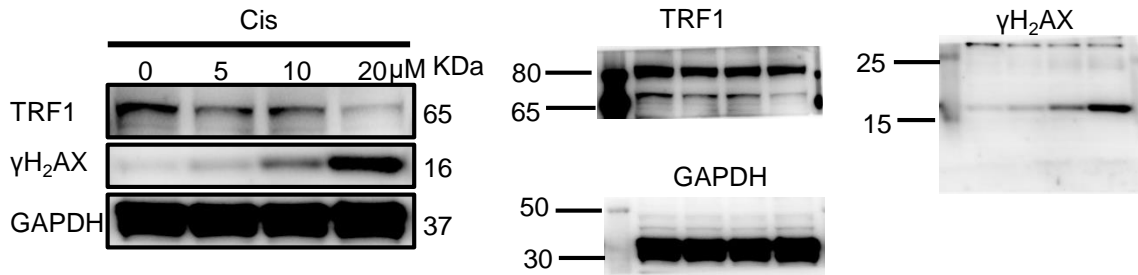


Unedited images for figure 3G

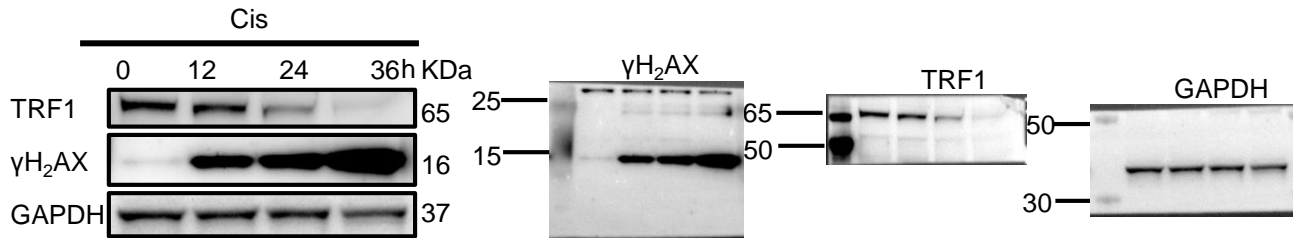


Original data 3.

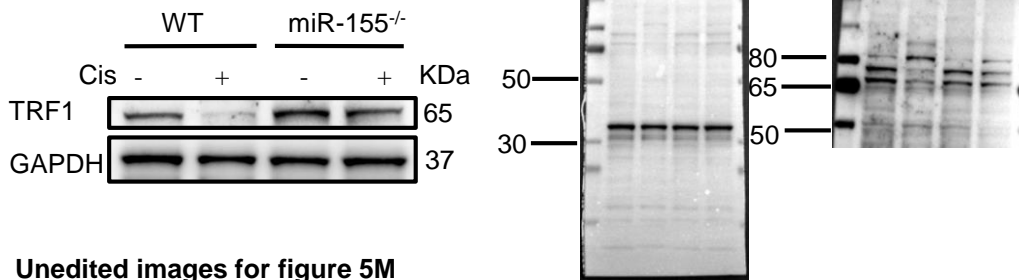
Unedited images for figure 5C



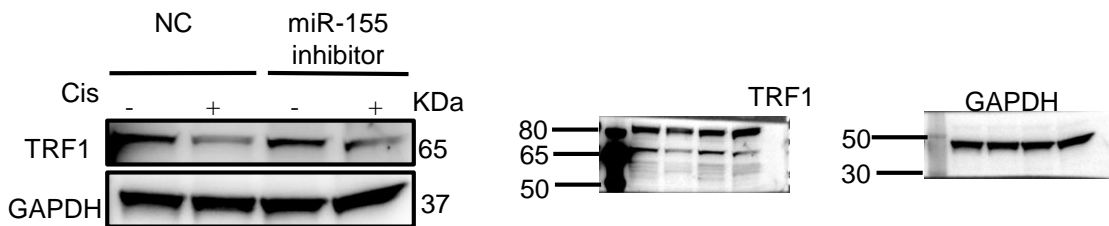
Unedited images for figure 5F



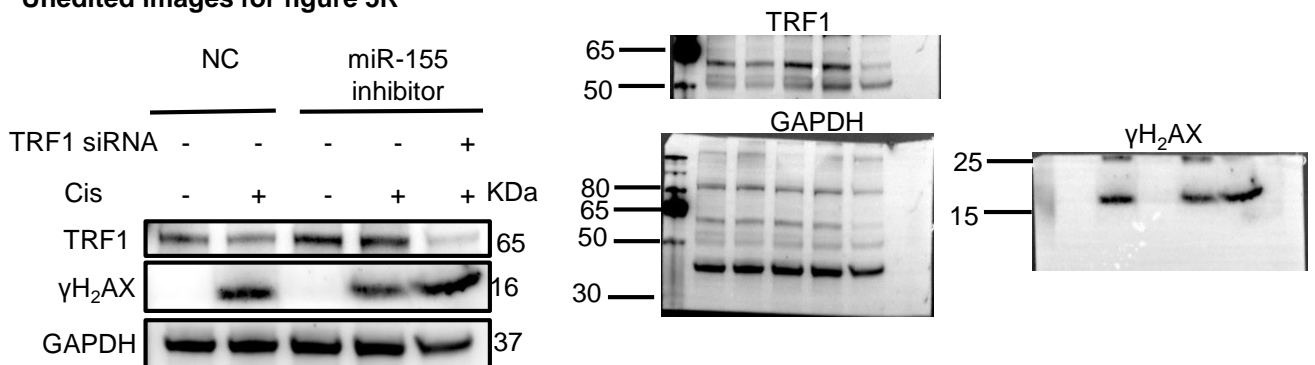
Unedited images for figure 5K



Unedited images for figure 5M

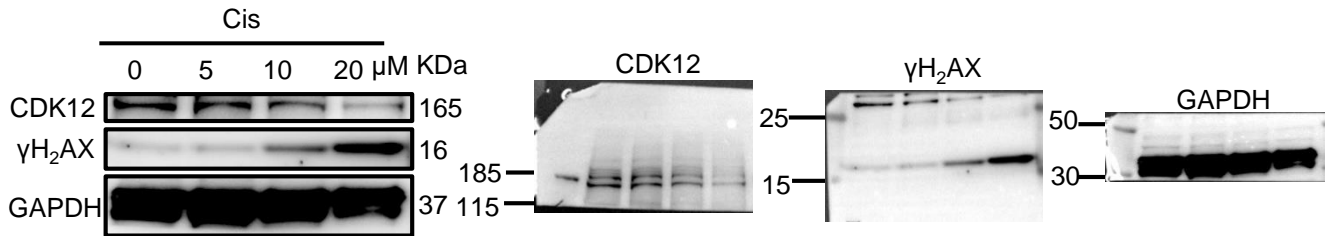


Unedited images for figure 5R

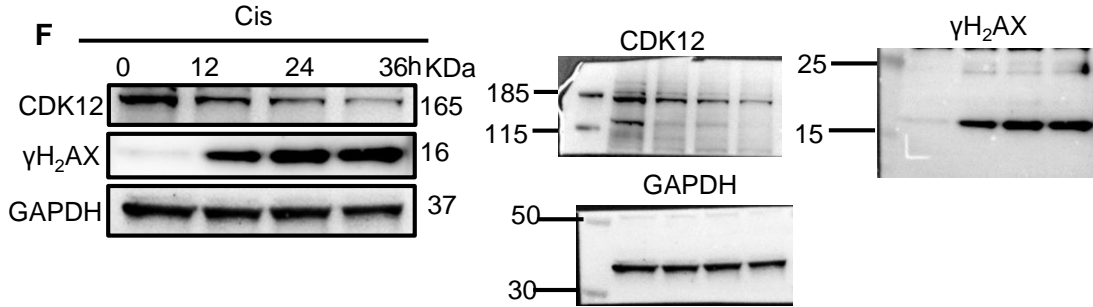


Original data 4.

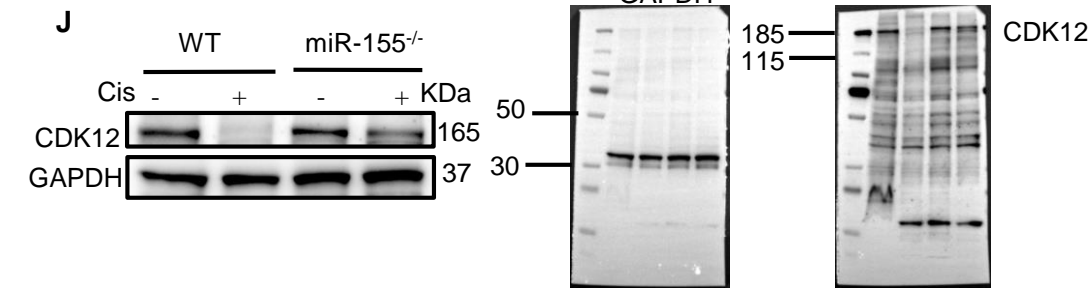
Unedited images for figure 6C



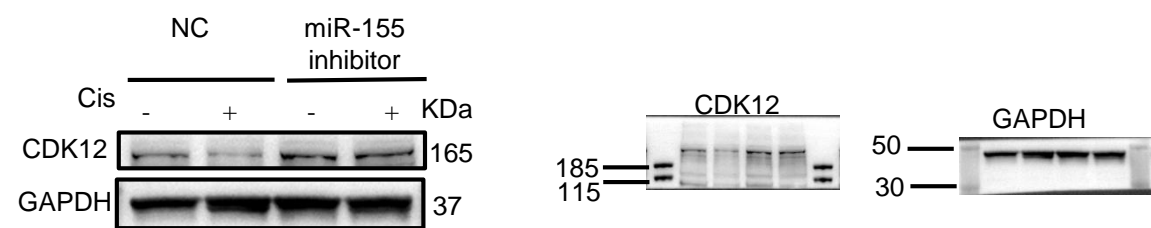
Unedited images for figure 6F



Unedited images for figure 6I



Unedited images for figure 6M



Unedited images for figure 6Q

