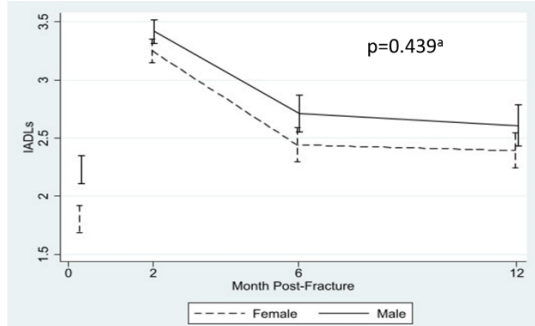
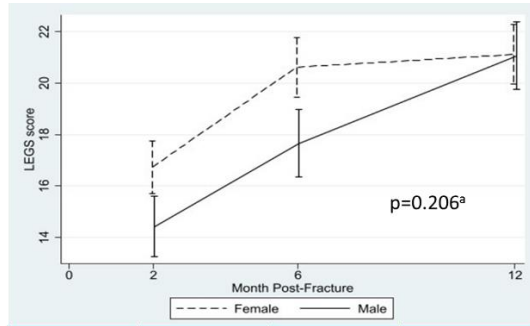


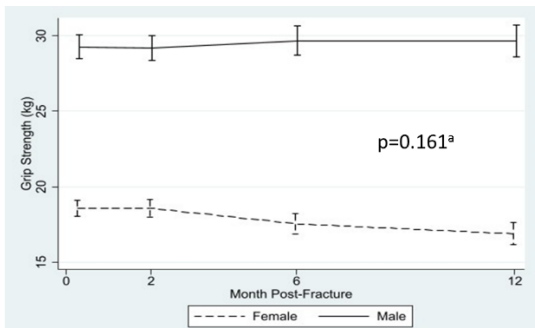
Appendix A. Mean Change in Outcome Measures with Non-significant Differences in Slopes by Sex



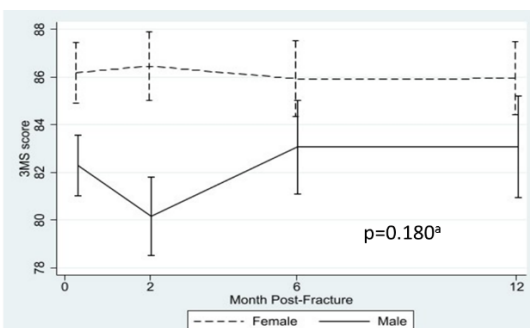
	Baseline	2 Month	6 Month	12 Month
Female n	165	132	104	102
Male n	161	130	93	84



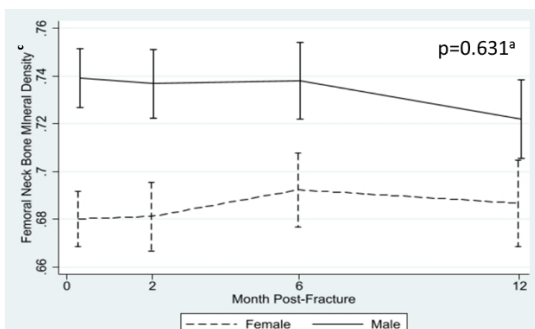
	2 Month	6 Month	12 Month
Female n	91	78	76
Male n	84	70	61



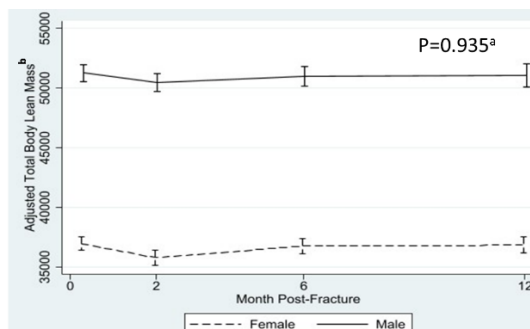
	Baseline	2 Month	6 Month	12 Month
Female n	162	110	91	86
Male n	160	110	91	74



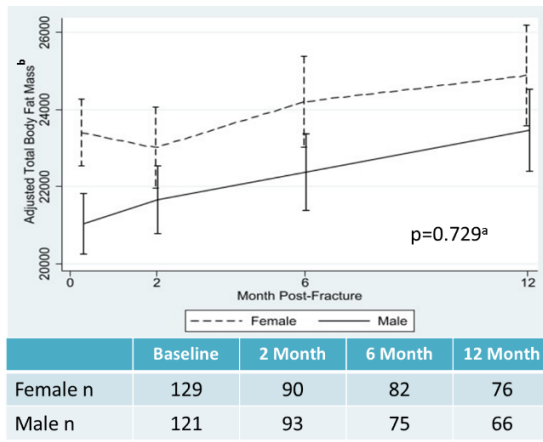
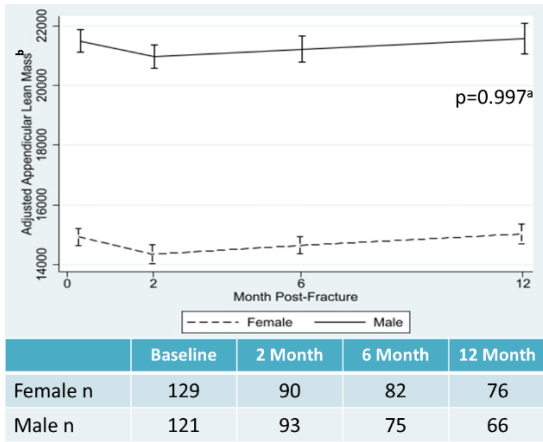
	Baseline	2 Month	6 Month	12 Month
Female n	167	128	104	103
Male n	164	125	94	82



	Baseline	2 Month	6 Month	12 Month
Female n	130	90	83	76
Male n	123	94	75	67



	Baseline	2 Month	6 Month	12 Month
Female n	129	90	82	76
Male n	121	93	75	66



Abbreviations: Instrumental Activities of Daily Living; LEGS, Lower Extremity Gain Scale; 3MS, Modified Mini-Mental State Examination; BMD, Bone Mineral Density

The reporting period for the baseline assessment of IADLs was during the 2 weeks prior to the fracture.

^aP-value for hypothesis test of difference in slopes

^bAdjusted for affected leg and machine type

^cAdjusted for machine type