

Table S1. Demographics and Clinical Characteristics of Human Psoriasis Patients

Sex, ethnicity, age, weight	
Female	4/21 (19%)
Male	17/21 (81%)
Chinese	21/21 (100%)
Age (years)	50.8 (9.4)
Weight (Kg)	72.0 (8.1)
Body-mass index percentile	
Under weight	1/21 (4.8%)
Normal weight	4/21 (19%)
Over weight	13/21 (61.9%)
Obese	3/21 (14.3%)
Psoriasis duration (years)	18.1 (8.9)
Family history of psoriasis	6/21 (28.6%)
Previous psoriasis treatment	
Topical treatments	20/21 (95.2%)
Phototherapy	11/21 (52.4%)
Acitretin	11/21 (52.4%)
Methotrexate	2/21 (9.5%)
Adalimumab	4/21 (19%)
Ustekinumab	4/21 (19%)
Metabolic syndrome	6/21 (28.6%)

Table S2. Detailed information on psoriasis patients treated with GC

Patient#	Pre-PASI	Post-PASI	Recurrent PASI	Efficacy (%)	*Effective treatment	Recurrent	Systematic treatment
1	17.8	10.8		37.93%	No		UV and Acitretin
2 [#]	22.5	9.9	22.3	56.00%	Yes	Yes	Ustekinumab
3	10.3	2.8	4.8	72.82%	Yes	No	Acitretin
4	23.8	11.8	18.4	50.42%	Yes	Yes	UV, Acitretin, Adalimumab
5	34.2	21.5	20	37.13%	No	No	UV, Acitretin
6	14.8	5.7	17.9	61.49%	Yes	Yes	Ustekinumab, Acitretin
7	21	10.4	18.6	50.48%	Yes	Yes	UV, Acitretin, Ustekinumab
8	11.4	6.8	9.6	40.35%	No	No	Acitretin
9	11.5	6.6	3.5	42.24%	No	No	UV
10	42.4	20.9	42.4	50.71%	Yes	Yes	UV, Acitretin, Methotrexate, Adalimumab
11	29.8	14.2	23.8	52.35%	Yes	Yes	UV, Acitretin, Methotrexate
12	26.7	9.5	35.8	64.42%	Yes	Yes	UV, Adalimumab
13	11.6	6.6	9.5	43.10%	No	No	Acitretin
14	23.4	17.1	29.1	26.92%	No	No	UV
15	11.7	7.9	8.9	32.48%	No	No	None
16	16	14.6	19	8.75%	No	No	None
17	15.8	7.4	16.4	53.16%	Yes	Yes	None
18	16.8	8.1	17	51.79%	Yes	Yes	None
19	31.2	14.4	28.8	53.85%	Yes	Yes	UV, Ustekinumab
20	17	9.5	10.8	44.12%	No	No	Adalimumab
21	15.3	7.1	30.1	53.69%	Yes	Yes	UV, Acitretin

*PASI50 was considered as an effective treatment

[#] Highlighted in red denotes eligible patients who were subjected to RNAseq analyses in this study

Table S3. Specific Primer Sequences for Real-time PCR Analysis

Name	Primer	Sequences (5'-3')
GAPDH	Forward (F)	CAC ATG GCC TCC AAG GAG TAA
	Reverse (R)	GTG AGG GTC TCT CTC TTC CTC TTG T
Human IL-7	F	GGGTGAAGCCCAACCAACAA
	R	AGGATGCAGCTAAAGTTCGTGT
Human CCL20	F	GCTTTGATGTCAGTGCTGCTACTC
	R	GTATCAAGACAGCAGTCAAAGTTG
Human IL-17	F	AGATTACTACAACCGATCCACCT
	R	GGGGACAGAGTTCATGTGGTA
Human IL-23	F	CGTCTCCTTCTCCGCTTCAA
	R	ACCCGGGCGGCTACAG
Human CCL2	F	GCAATCAATGCCCCAGTCAC
	R	GACACTTGCTGCTGGTGATTC
Human CCL5	F	CAGTCGTCTTTGTCACCCGA
	R	TCTTCTCTGGGTTGGCACAC
Human CXCL10	F	TGCCATTCTGATTTGCTGCC
	R	TGCAGGTACAGCGTACAGTT
β -MG	F	CTTTCTGGTGCTTGTCTC
	R	TCAGTATGTTCGGCTTCC
Mouse CCL20	F	TTTTGGGATGGAATTGGACAC
	R	TGCAGGTGAAGCCTTCAACC
Mouse CCL2	F	GGTCCCTGTCATGCTTCTGG
	R	GCTGCTGGTGATCCTCTTGT

Figure S1

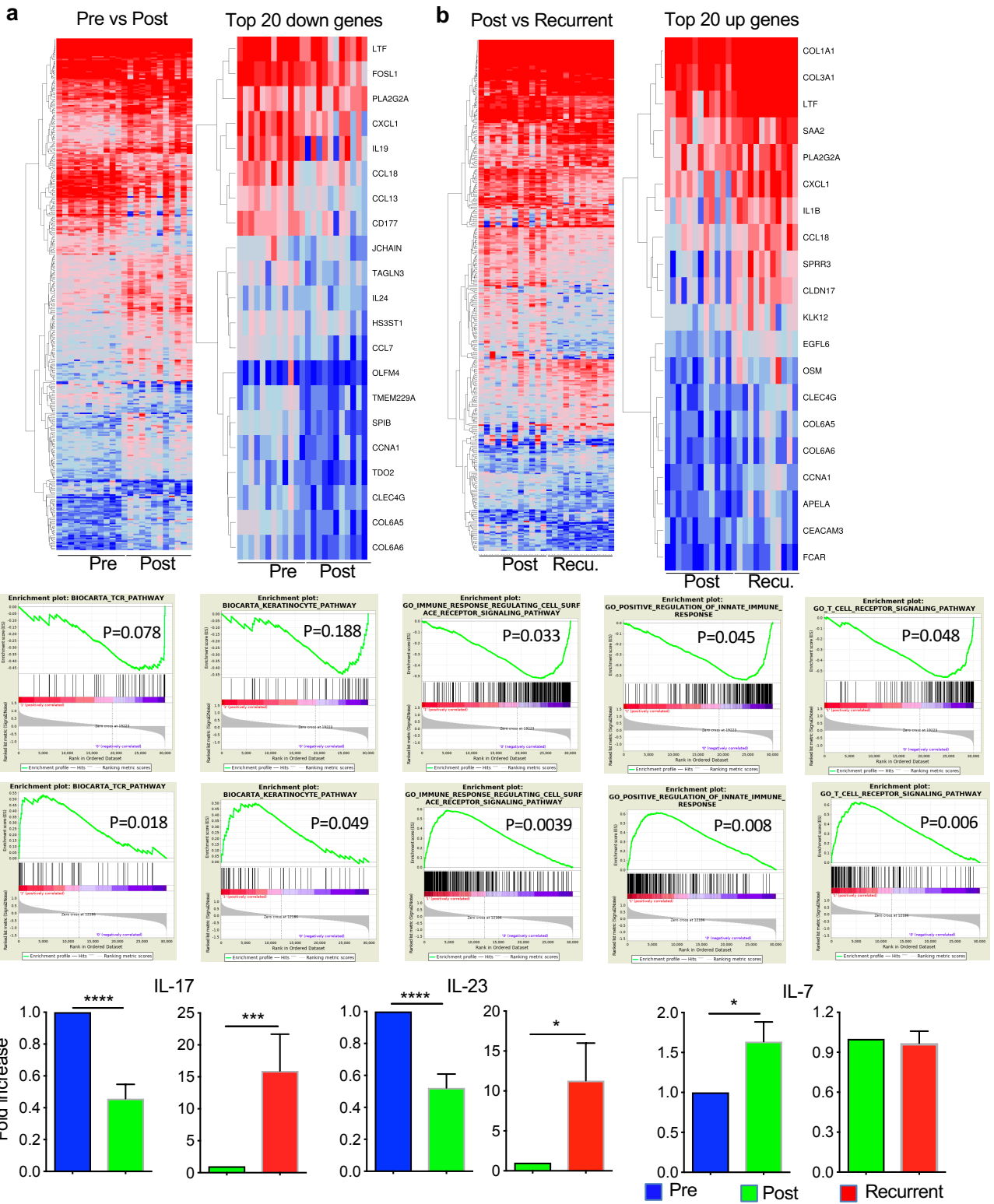


Figure S3

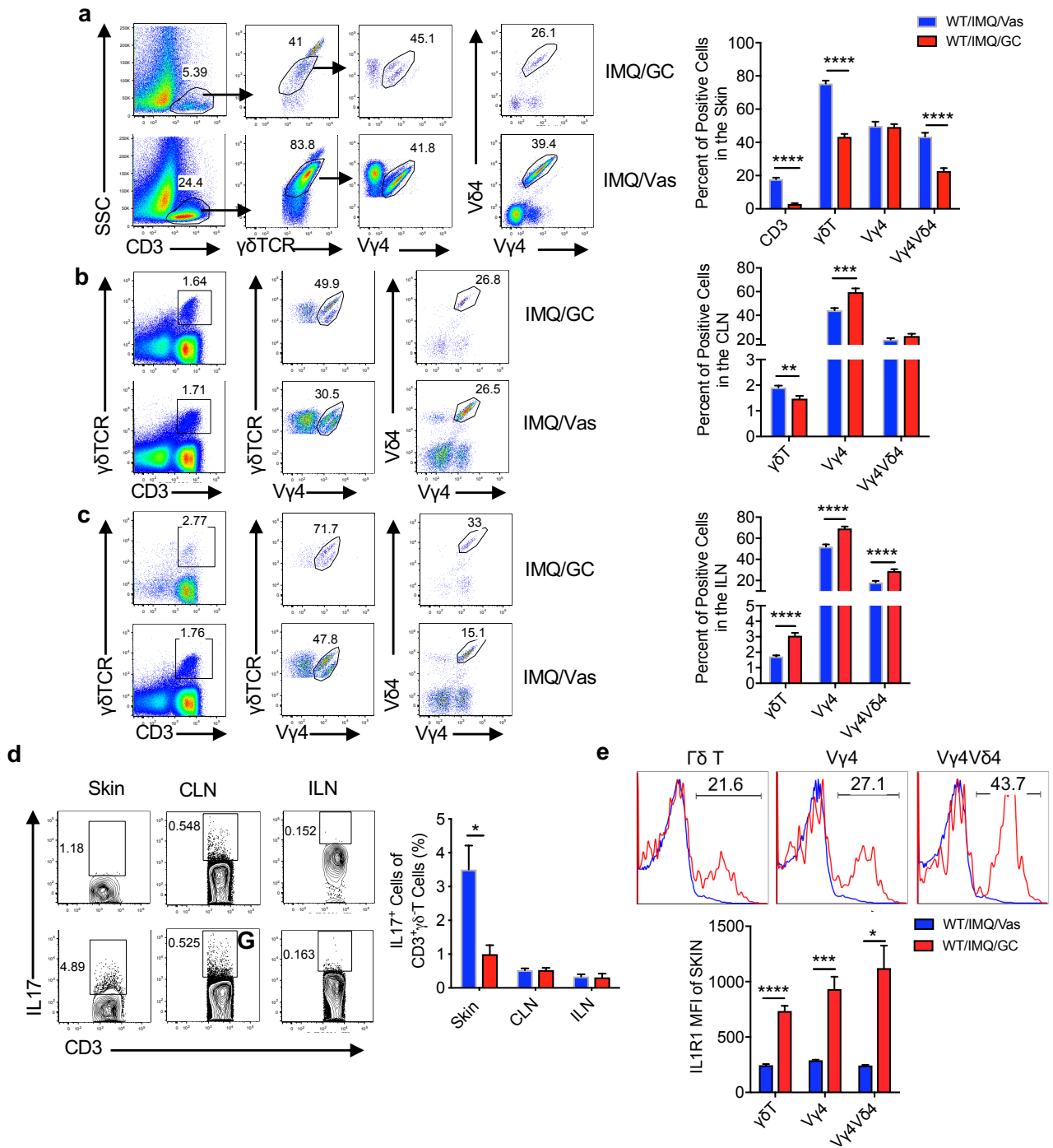


Figure S4

