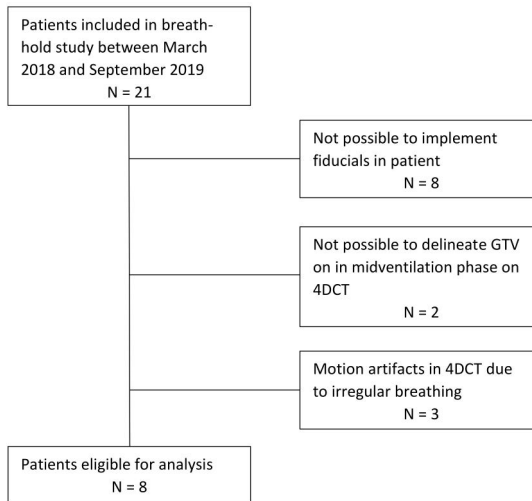


## S1 Appendix

### Patient Selection

The patients were selected within a breath-hold study of SBRT for metastases. The patients were treated at Rigshospitalet, Copenhagen, Denmark. The initial 21 patients were reduced to 8 patients based on fiducial markers implanted, image quality and regular breathing patterns. See details on patient selection in S1 Fig.

As a part of the study protocol the patients were also imaged using CT in three deep inspiration breath-holds and three expiration breath-hold using the RPM system with visual feedback to obtain consistent breath-hold levels.



**S1 Fig. Flow chart of patient selection.** A total of 8 patients with fiducial markers were selected to test the accuracy of registration to locate the tumor..