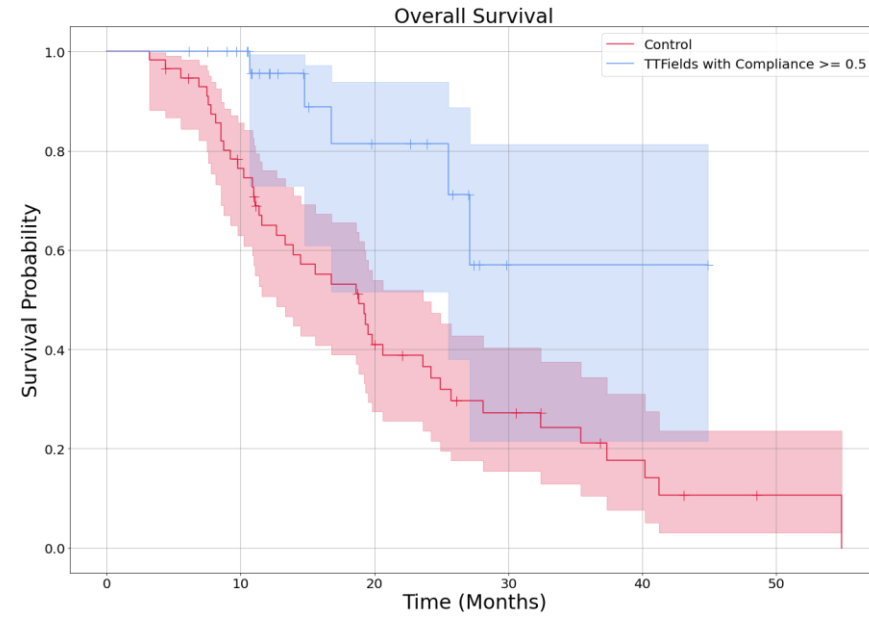
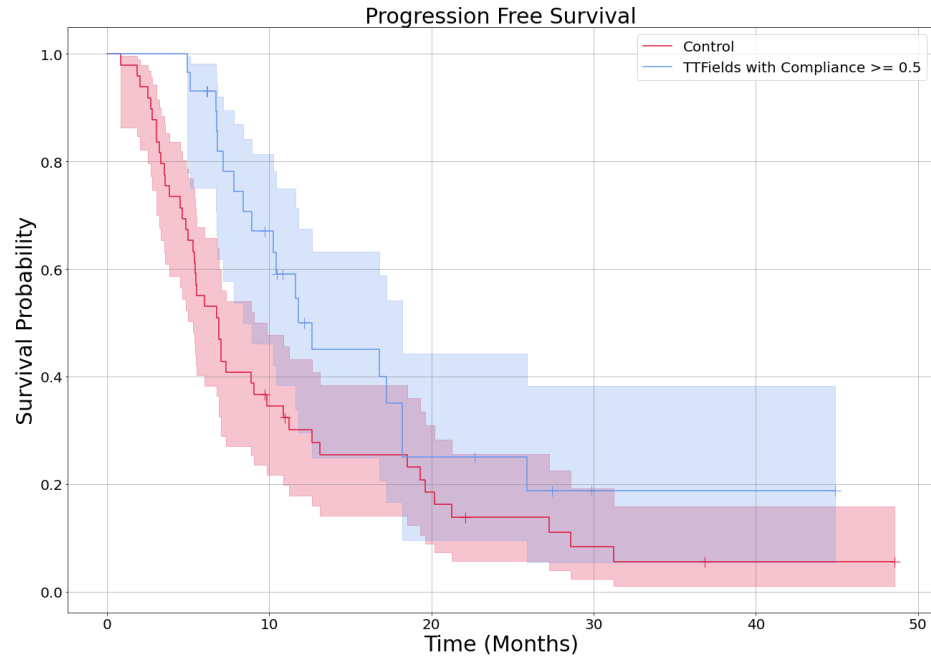
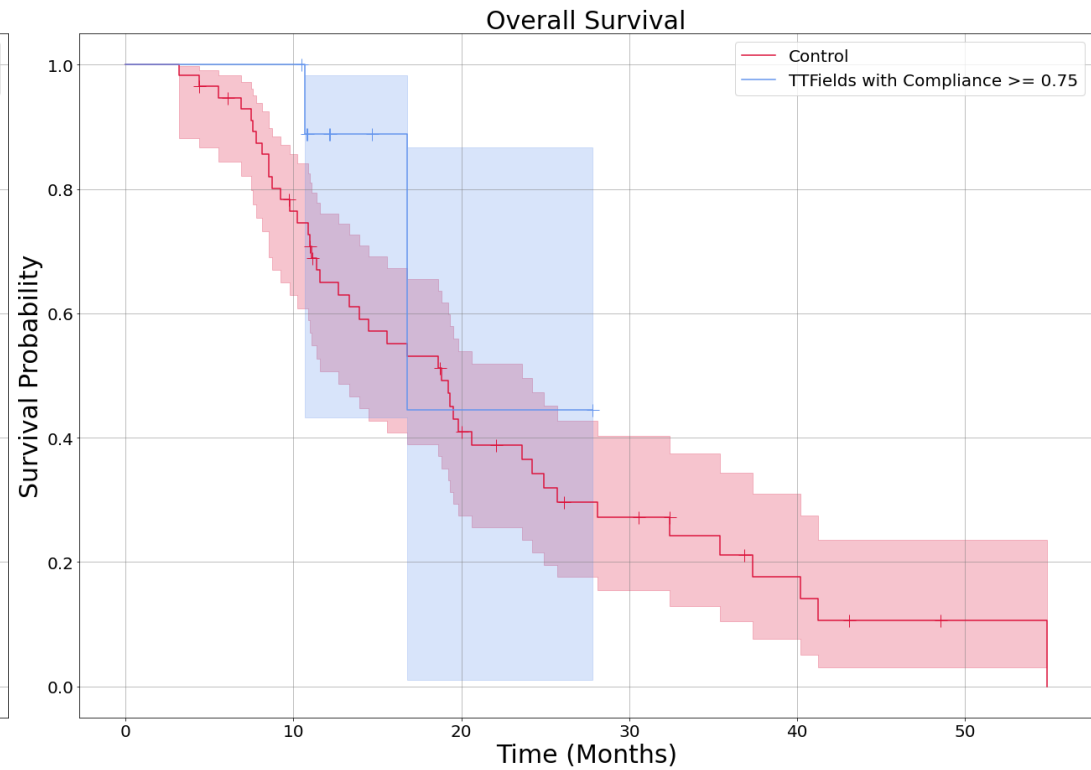
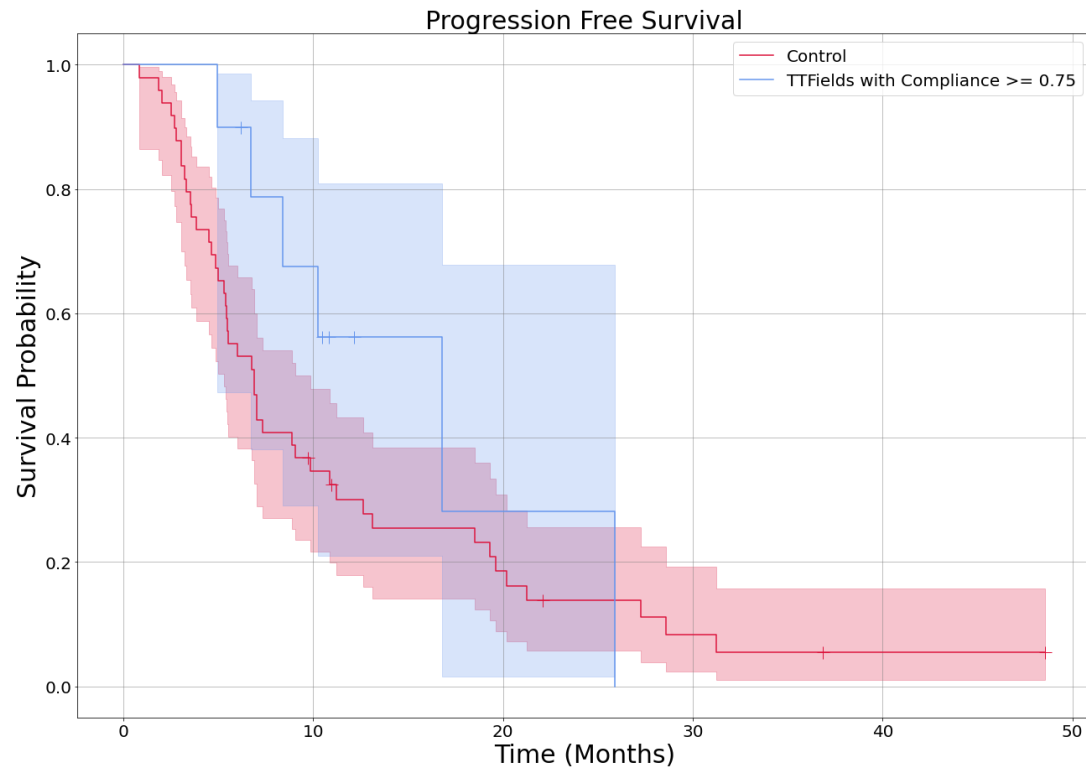


# Supplemental Figure 1



	<b>p value</b>	<b>Survival</b>	<b>HR</b>	<b>Lower 95%</b>	<b>Upper 95%</b>	<b>TTFields n</b>	<b>Control n</b>	<b>TTFields censored</b>	<b>Control censored</b>
PFS 0.5	0.0274	12.6m vs. 6.9m	0.54	0.32	0.93	29	49	10	5
OS 0.5	0.0041	18.8 m vs. NR	0.26	0.10	0.65	29	57	24	14

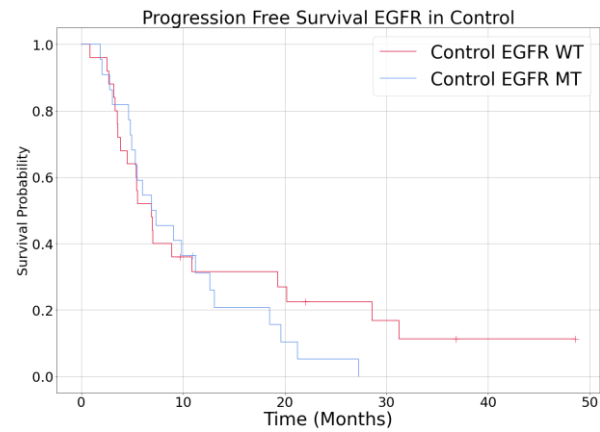
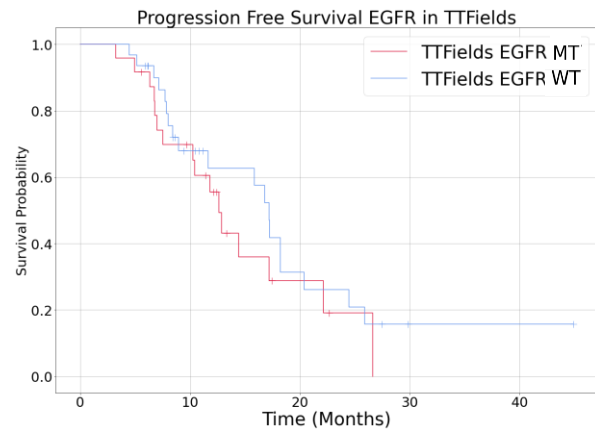
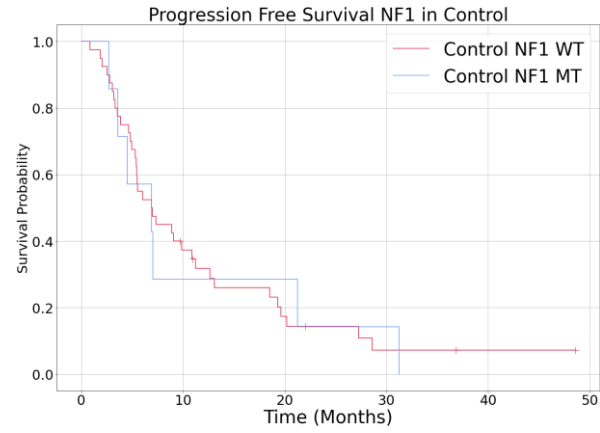
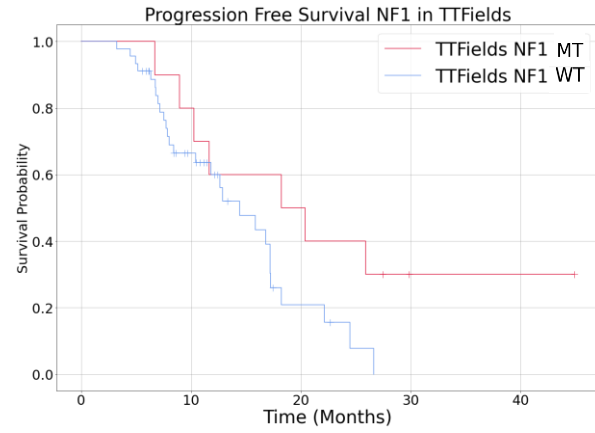
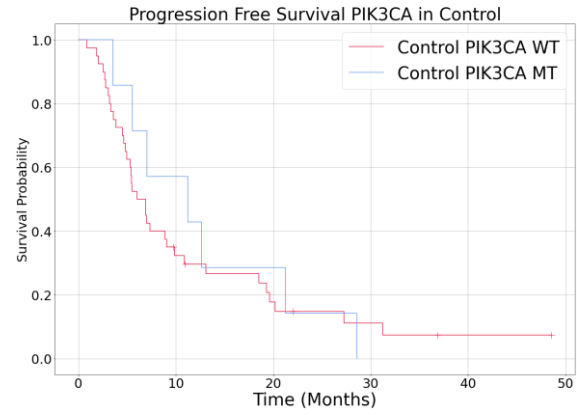
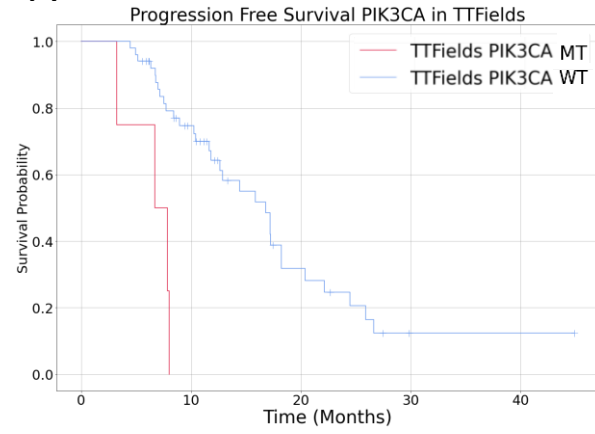
## Supplemental Figure 2



	p value	Survival	HR	Lower 95%	Upper 95%	TTFields n	Control n	TTFields censored	Control censored
PFS 0.75	0.23	16.8 m vs. 6.9m	0.59	0.25	0.39	10	49	4	5
OS 0.75	0.25	16.8m vs. 18.8m	0.43	0.10	1.81	10	57	8	14

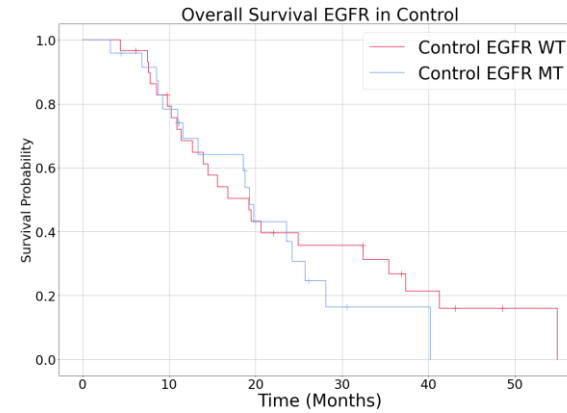
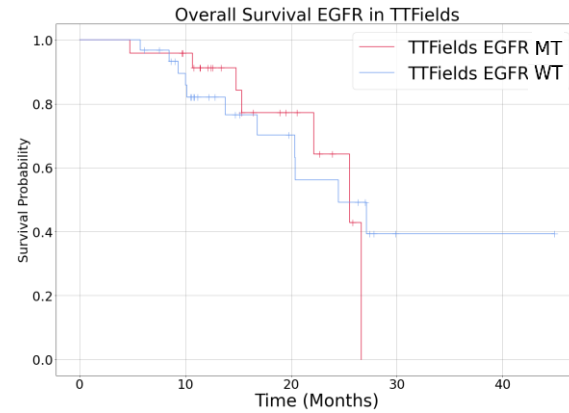
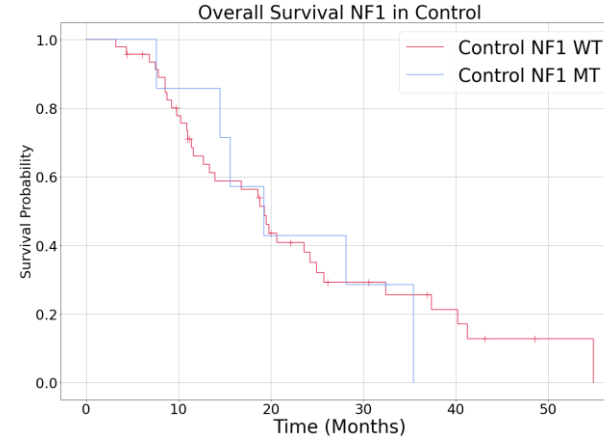
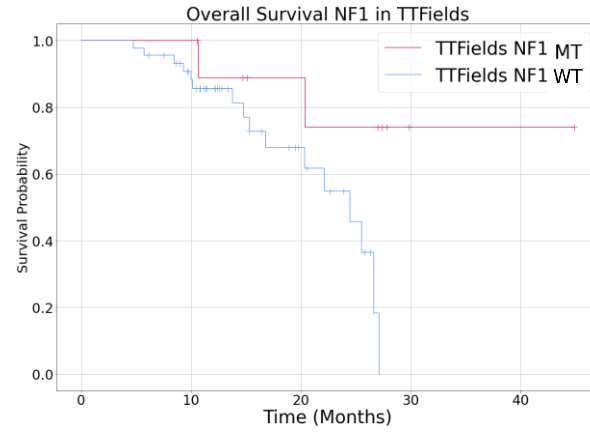
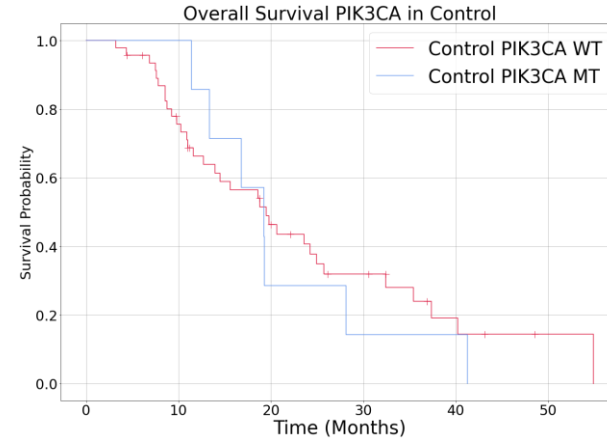
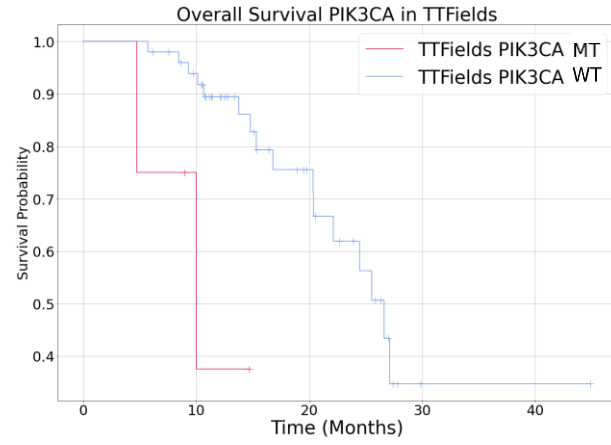
# Supplemental Figure 3A

A



# Supplemental Figure 3B

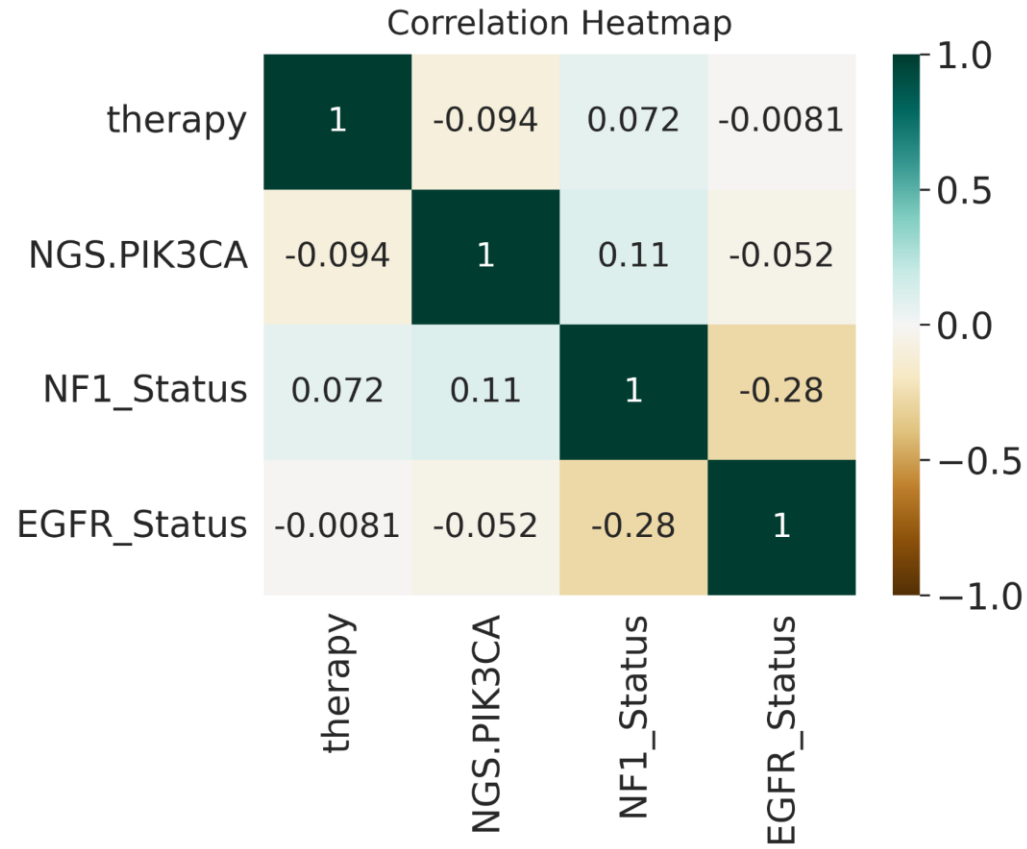
## B



# Supplemental Table 1

	Progression Free Survival		Interaction p-value (Biomarker and therapy)	Overall Survival		Interaction p-value (Biomarker and therapy)
	TTFields treated	Control		TTFields treated	Control	
<b>PIK3CA Mutated</b>	16.8m	11.2m	0.0200	10.0m	19.2m	0.1196
<b>PIK3CA Wild type</b>	6.7m	6.0m		26.6 m	19.5m	
<b><i>P values [Cox PH]</i></b>	<i>0.0008</i>	<i>0.6541</i>		<i>0.0158</i>	<i>0.6695</i>	
<b><i>HR</i></b>	<i>7.33</i>	<i>0.83</i>		<i>7.38</i>	<i>1.20</i>	
<b><i>Lower 95%</i></b>	<i>2.29</i>	<i>0.36</i>		<i>1.46</i>	<i>0.53</i>	
<b><i>Upper 95%</i></b>	<i>23.53</i>	<i>1.88</i>		<i>37.40</i>	<i>2.72</i>	
<b>NF1 Alteration</b>	18.2m	6.9m		0.3549	NR	
<b>NF1 Intact</b>	14.4m	6.9m	24.7m		19.2m	
<b><i>P values [Cox PH]</i></b>	<i>0.0744</i>	<i>0.8933</i>	<i>0.0415</i>		<i>0.8902</i>	
<b><i>HR</i></b>	<i>0.45</i>	<i>1.06</i>	<i>0.20</i>		<i>1.06</i>	
<b><i>Lower 95%</i></b>	<i>0.19</i>	<i>0.47</i>	<i>0.04</i>		<i>0.44</i>	
<b><i>Upper 95%</i></b>	<i>1.08</i>	<i>2.40</i>	<i>0.94</i>		<i>2.56</i>	
<b>EGFR Mutated</b>	12.6m	6.9m	0.7821	25.3m	19.2m	0.5290
<b>EGFR Intact</b>	17.2m	6.9m		24.5m	19.3m	
<b><i>P values [Cox PH]</i></b>	<i>0.3628</i>	<i>0.3776</i>		<i>0.9462</i>	<i>0.5149</i>	
<b><i>HR</i></b>	<i>1.37</i>	<i>1.32</i>		<i>0.97</i>	<i>1.24</i>	
<b><i>Lower 95%</i></b>	<i>0.70</i>	<i>0.71</i>		<i>0.36</i>	<i>0.65</i>	
<b><i>Upper 95%</i></b>	<i>2.69</i>	<i>2.49</i>		<i>2.58</i>	<i>2.39</i>	

## Supplemental Figure 4



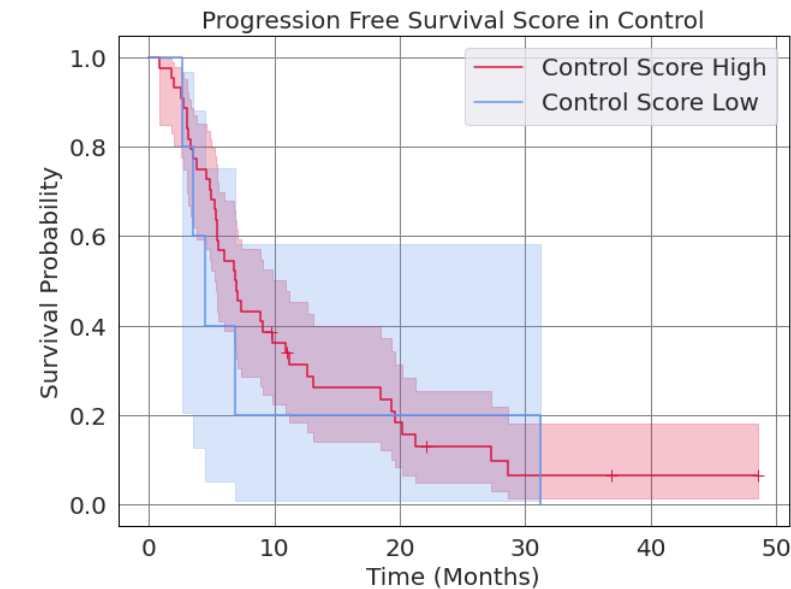
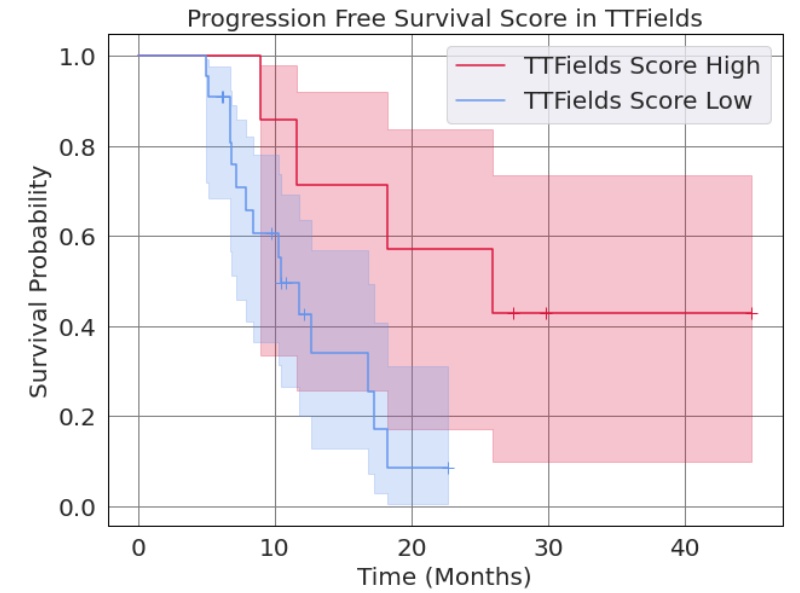
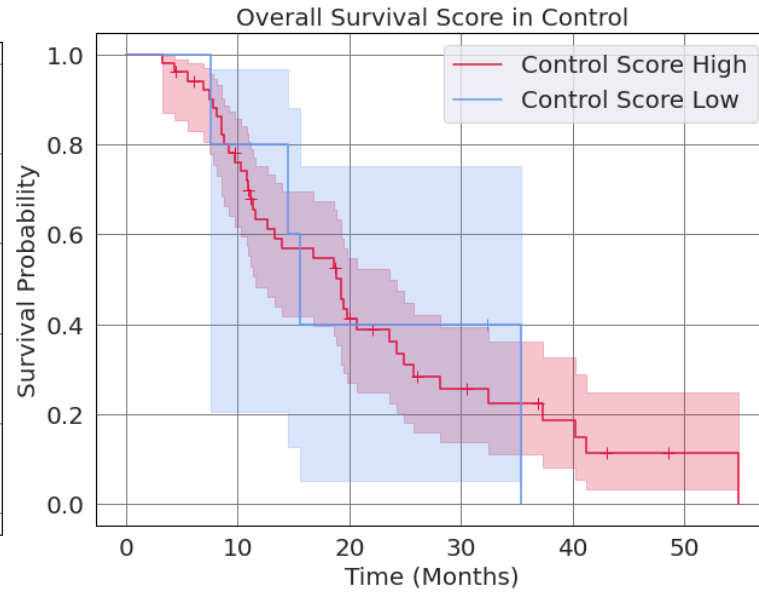
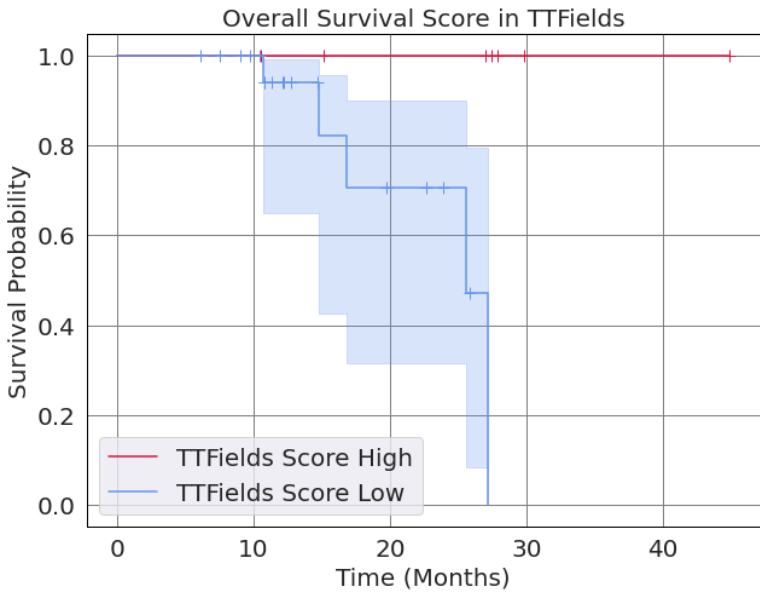
## Supplemental Figure 5

Model	Progression Free Survival		Overall Survival	
	Concordance Index	Log Likelihood	Concordance Index	Log Likelihood
therapy + NGS.PIK3CA	0.62901701	-289.9317	0.59395349	-215.6307
therapy + NGS.PIK3CA + interaction	0.65193762	-287.60415	0.60914729	-214.64447
therapy + NF1_Status	0.63114367	-289.7176	0.59968992	-215.40537
therapy + NF1_Status + interaction	0.63397921	-289.29269	0.59023256	-214.18374
therapy + EGFR_Status	0.63031664	-289.26386	0.5772093	-216.05442
therapy + EGFR_Status + interaction	0.63031664	-289.22558	0.59364341	-215.85441
therapy + NGS.PIK3CA + NF1_Status	0.63575142	-289.45943	0.61736434	-214.61374
therapy + NGS.PIK3CA + EGFR_Status	0.63480624	-289.10403	0.5924031	-215.52514
therapy + NF1_Status + EGFR_Status	0.63610586	-289.09718	0.58728682	-215.39743
therapy + NGS.PIK3CA + NF1_Status + EGFR_Status	0.64189509	-288.86793	0.60186047	-214.60448

PFS model: therapy + NGS.PIK3CA + NF1\_Status + EGFR\_Status

covariate	HR	Lower 95%	Upper 95%	p
EGFR_Status	1.29955674	0.81044579	2.08385034	0.27677375
NF1_Status	0.80728039	0.43412151	1.50119632	0.49879188
NGS.PIK3CA	1.27013305	0.6457239	2.49834018	0.48844692
therapy	0.61683048	0.38110215	0.9983671	0.04922752

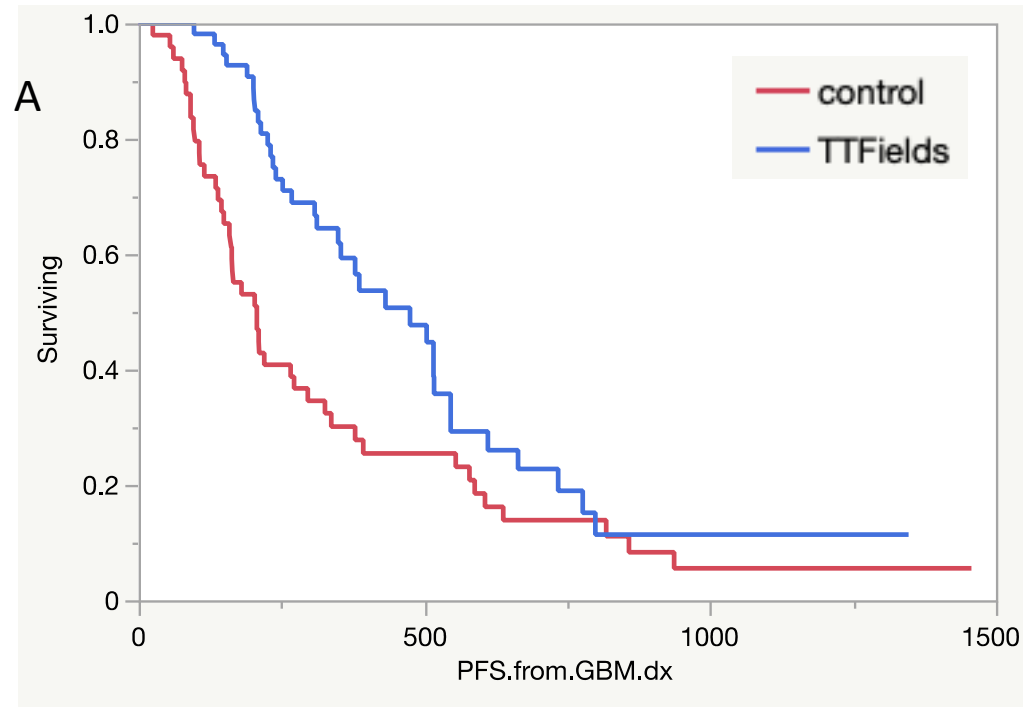
# Supplemental Figure 6



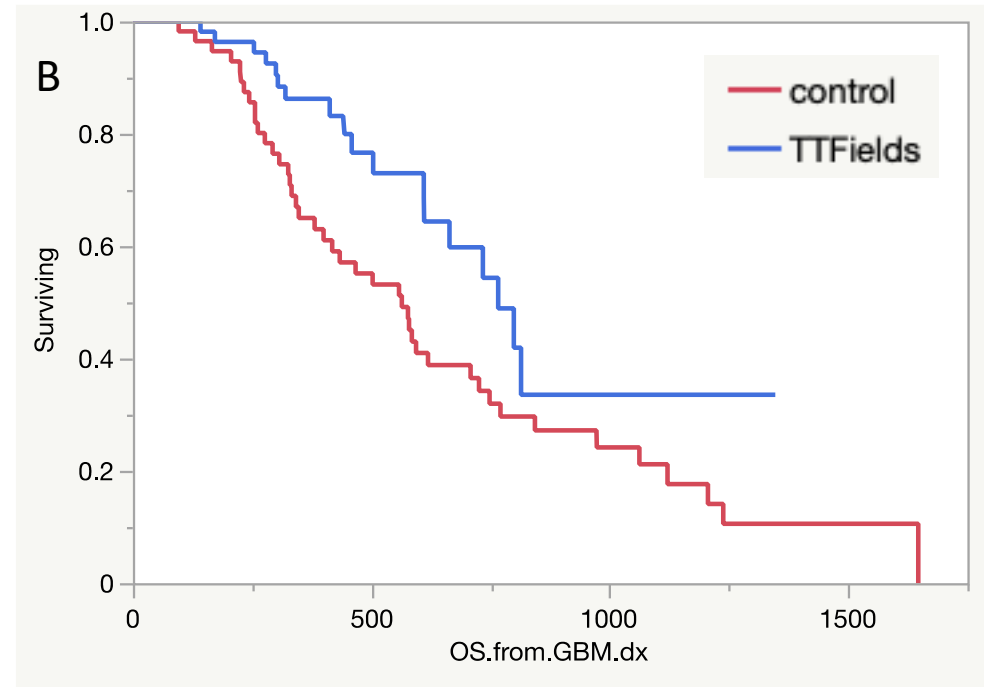
	> 50% compliance group					
	Progression Free Survival		Interaction p-value (Score and therapy) 0.1173	Overall Survival		Interaction p-value (Score and Therapy) 0.9950
	TTFIELDS treated	Control		TTFIELDS treated	Control	
<b>Score High</b>	25.9m	7.0m	Interaction p-value (Score and therapy) 0.1173	NR	19.2m	Interaction p-value (Score and Therapy) 0.9950
<b>Score Low</b>	10.4m	4.5m		25.5	15.6m	
<b><i>P values [Cox PH]</i></b>	0.0340	0.6485		0.9960	0.9847	
<b>HR</b>	0.25	1.25		1.01E-08	0.99	
<b>Lower 95%</b>	0.07	0.48		0	0.35	
<b>Upper 95%</b>	0.90	3.22		inf	2.79	



## Supplemental Figure 7



HR: 0.549, [95%CI: 0.35-0.86], p=0.0087

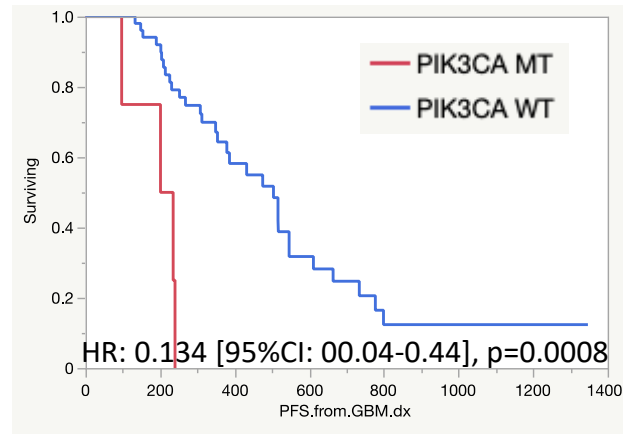


HR: 0.54 [95%CI: 0.31-0.95], p=0.0304

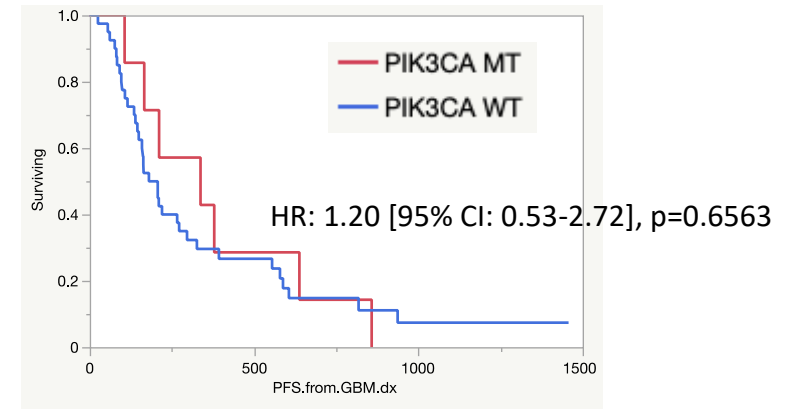
# Supplemental Figure 7

C

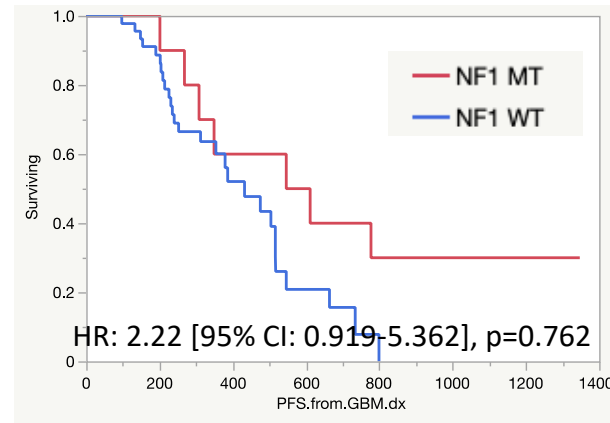
Progression-free survival PIK3CA in IDH-WT TTFields



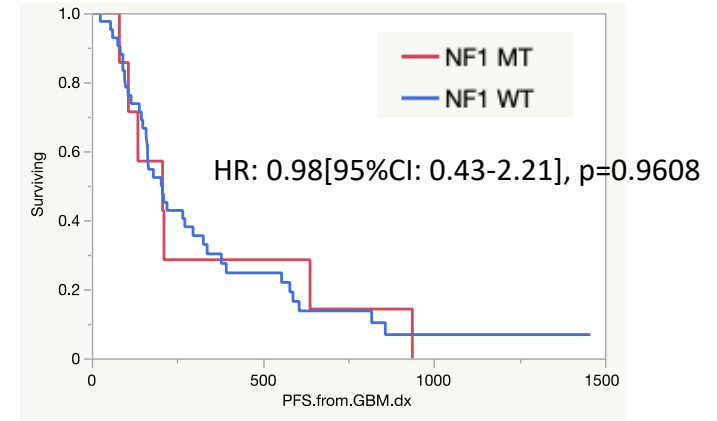
Progression-free survival PIK3CA in IDH-WT Controls



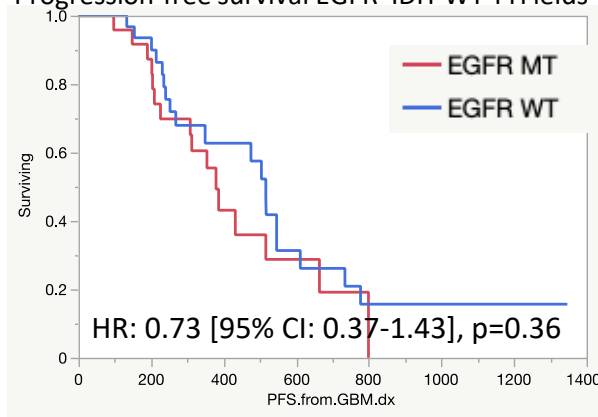
Progression-free survival NF1 in IDH-WT TTFields



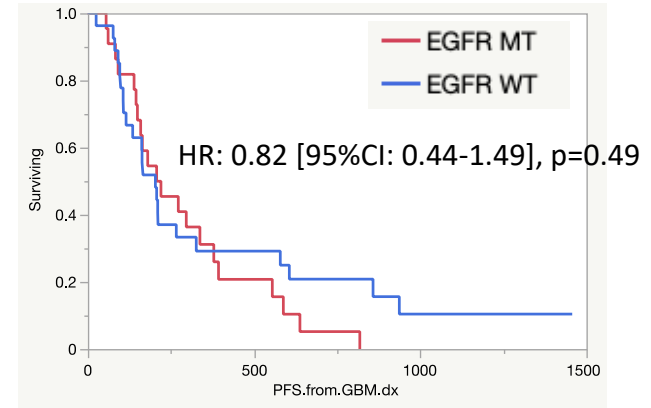
Progression-free survival NF1 IDH-WT Controls



Progression-free survival EGFR IDH-WT TTFields

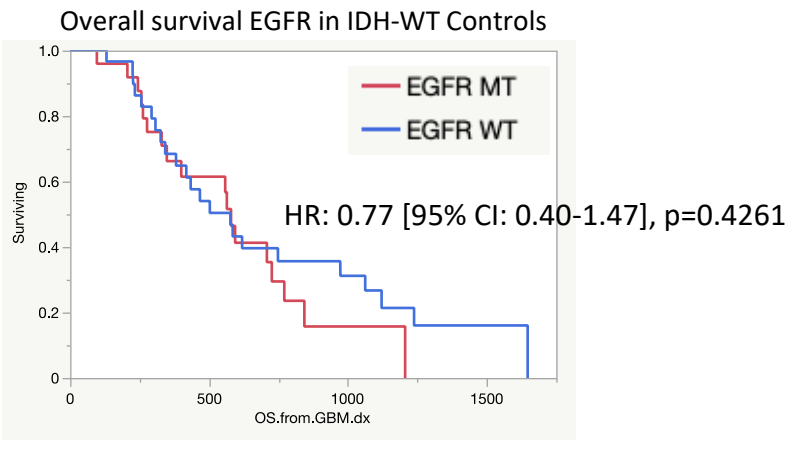
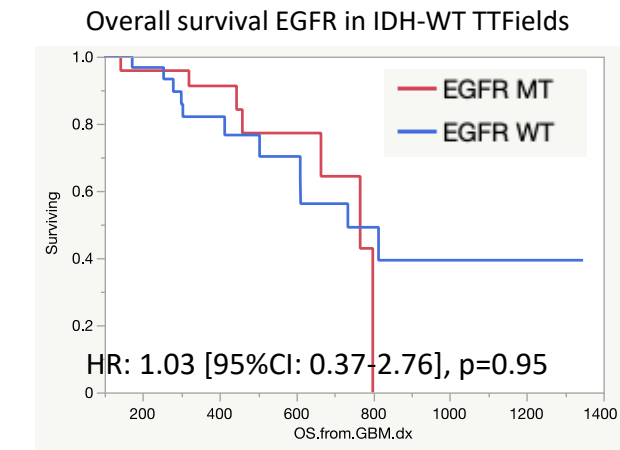
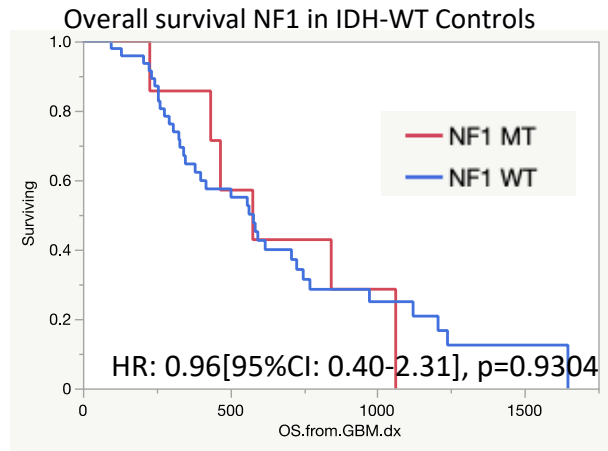
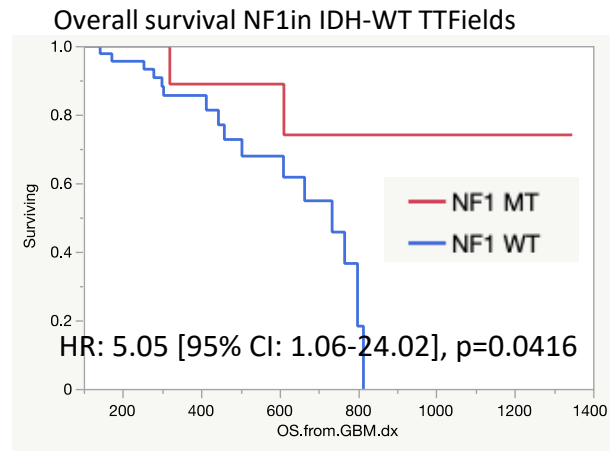
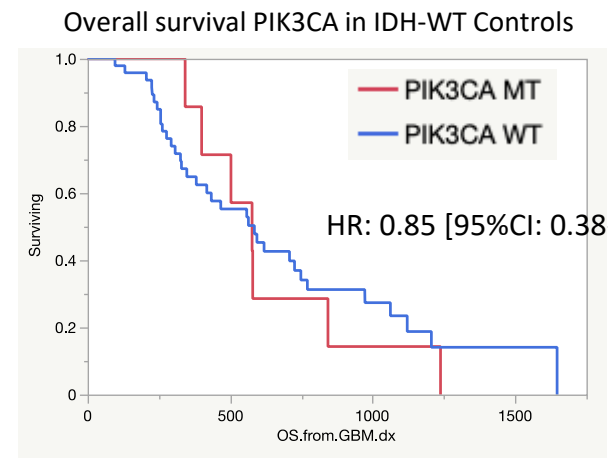
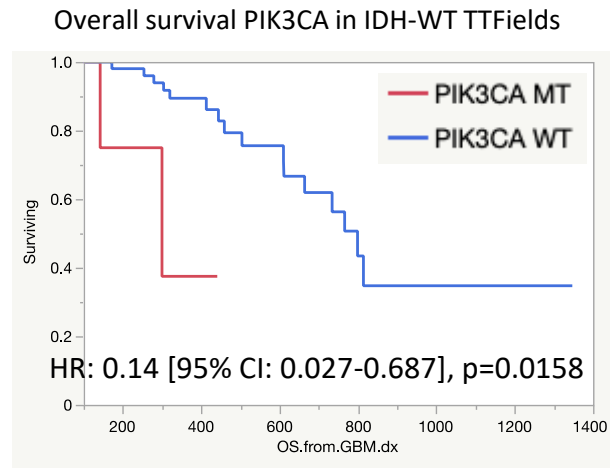


Progression-free survival EGFR IDH-WT Controls



# Supplemental Figure 7

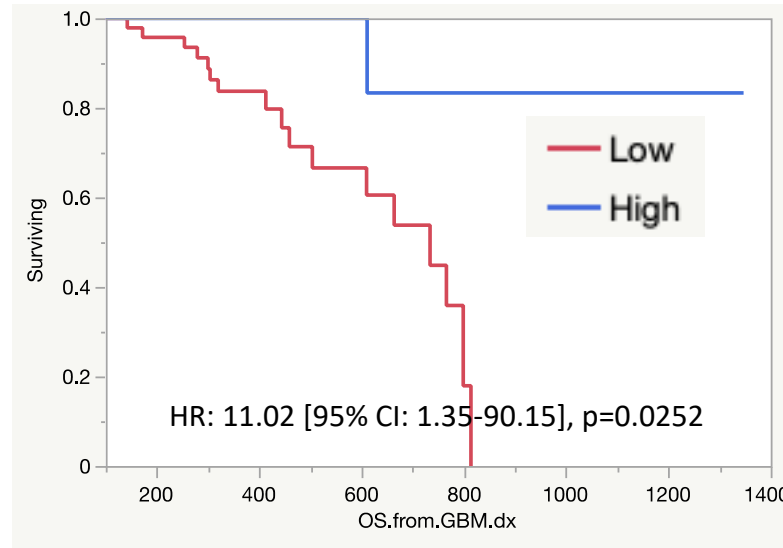
D



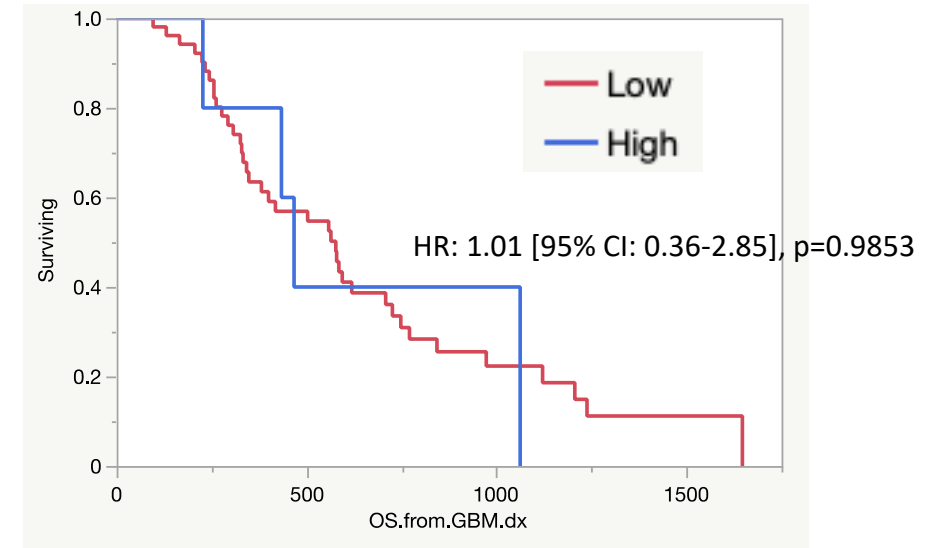
# Supplemental Figure 7

E

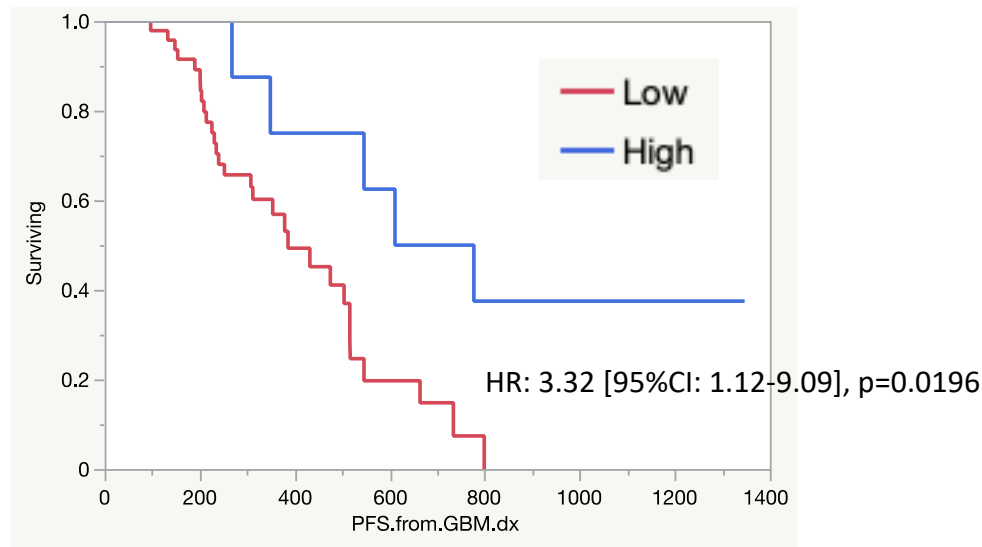
Overall survival Score high vs. low in IDH-WT TTFIELDS



Overall survival Score high vs. low in IDH-WT Controls



Progression-free survival Score high vs. low in IDH-WT TTFIELDS



Progression-free survival Score high vs. low in IDH-WT Controls

