

Supplementary information

Combination of midostaurin and ATRA exerts dose-dependent dual effects on acute myeloid leukemia cells with wild type *FLT3*

Hao Lu^{1#}, Xiang-qin Weng^{1#}, Yan Sheng¹, Jing Wu¹, Hui-min Xi¹, Xun Cai^{1*}

1. Shanghai Institute of Hematology, State Key Laboratory of Medical Genomics, National Research Center for Translational Medicine at Shanghai, Ruijin Hospital, Shanghai Jiao Tong University School of Medicine, Shanghai, China

No.197 Rui-jin Road II, Shanghai 200025, China

***Corresponding author:**

Xun Cai

Shanghai Institute of Hematology, State Key Laboratory of Medical Genomics, National Research Center for Translational Medicine at Shanghai, Ruijin Hospital, Shanghai Jiao Tong University School of Medicine, Shanghai, China

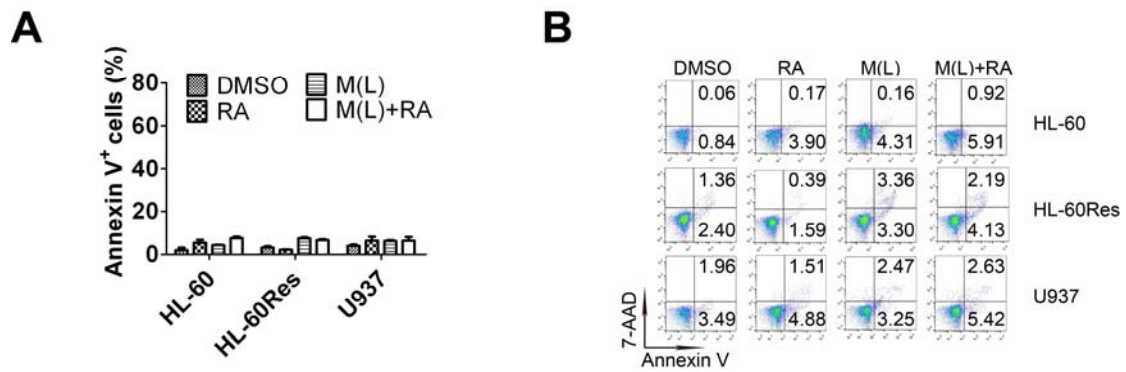
No.197 Rui-jin Road II, Shanghai 200025, China

Tel: 86-21-64370045 extension 610709

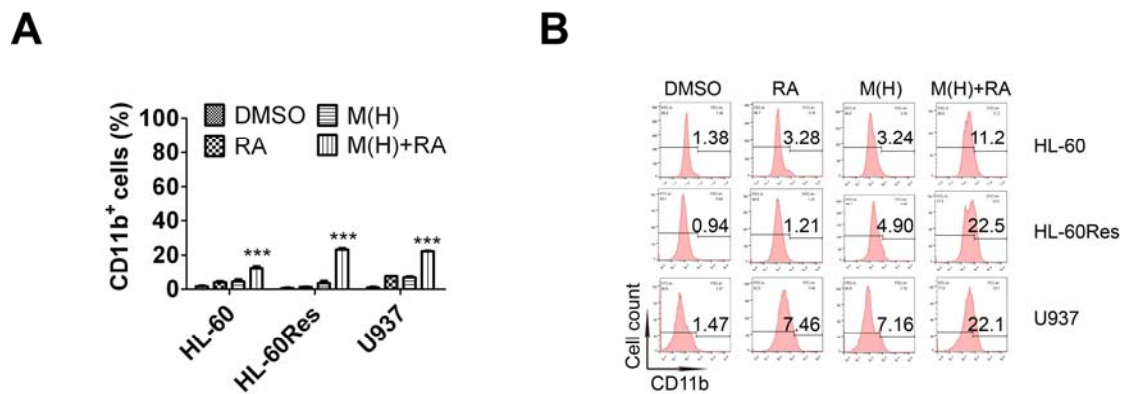
Fax: 86-21-64743206

E-mail address: Cx10901@rjh.com.cn

#Hao Lu and Xiang-qin Weng contributed equally to this work.

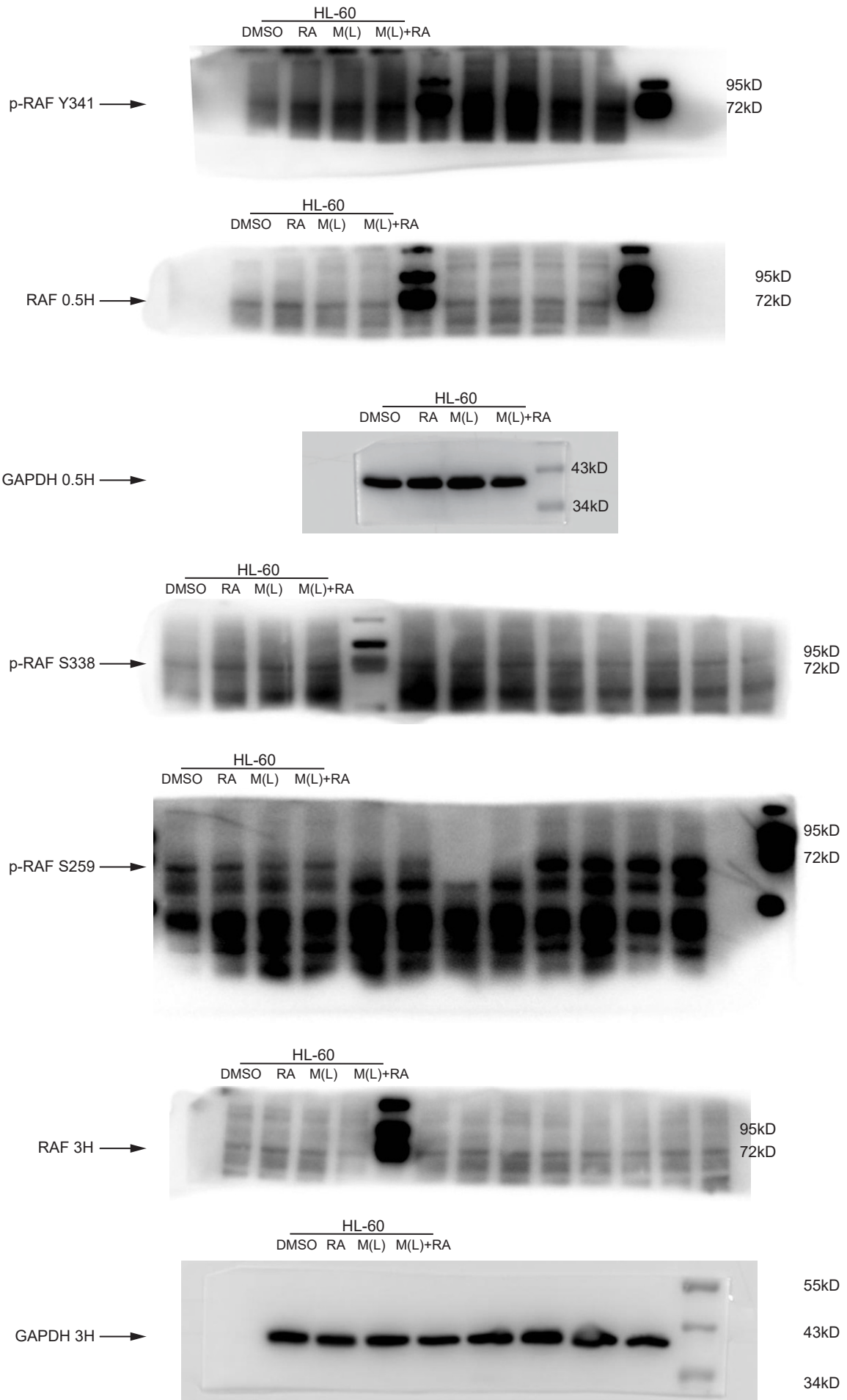


Supplemental Figure 1. The effect of Mido(L)-ATRA on the content of Annexin V⁺ cells. HL-60 cells were treated with 0.25 μ M modistaurin (M(L)) and/or 0.1 μ M ATRA for 6 d. HL-60Res and U937 cells were treated with 0.1 μ M modistaurin (M(L)) and/or 1 μ M ATRA for 12 and 8 d, respectively. (A) The column graph of the content of Annexin V⁺ cells in three cell lines. Each value represents the mean \pm SD of three independent measurements. (B) Representative scattered plotgrams of Annexin V expression. Results were representative among three independent experiments.

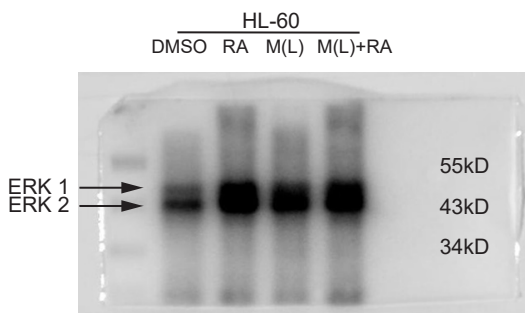
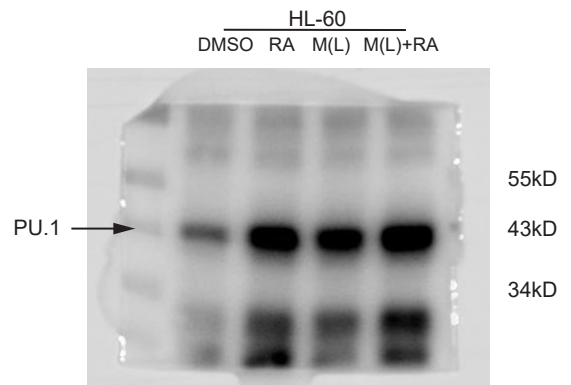
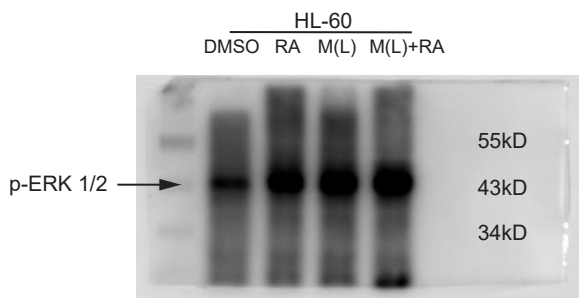
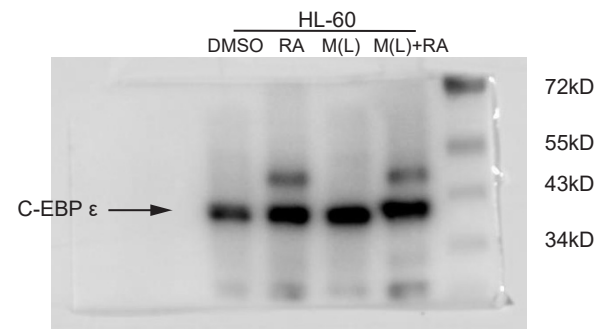
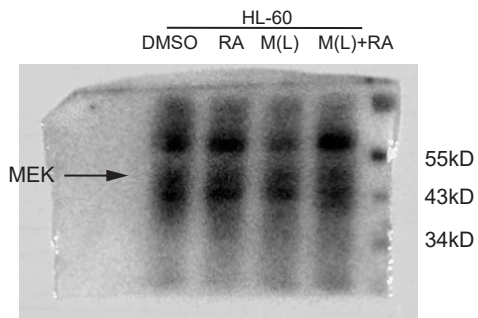
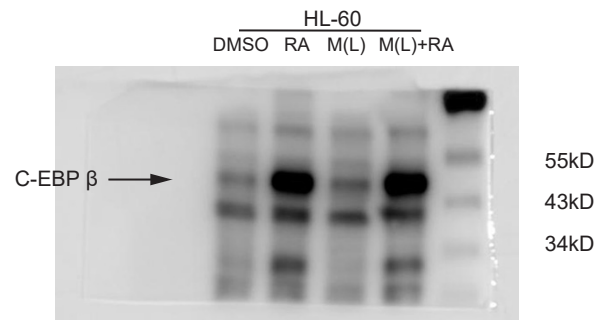
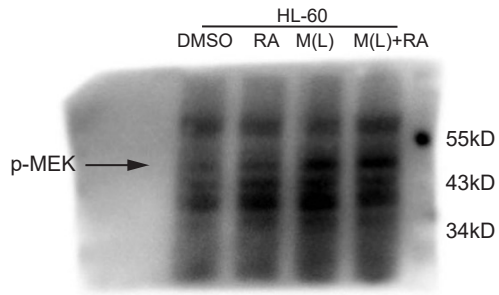


Supplemental Figure 2. The effect of Mido(H)-ATRA on the content of CD11b⁺ cells. Cells were treated with 0.5 μ M midostaurin (M(H)) and/or ATRA for 2 d. (A) The column graph of CD11b expression in three cell lines. Each value represents the mean \pm SD of three independent measurements. *** P <0.005, versus DMSO-treated cells. (B) Representative histograms of CD11b expression with high dose midostaurin and/or ATRA. Results were representative among three independent experiments.

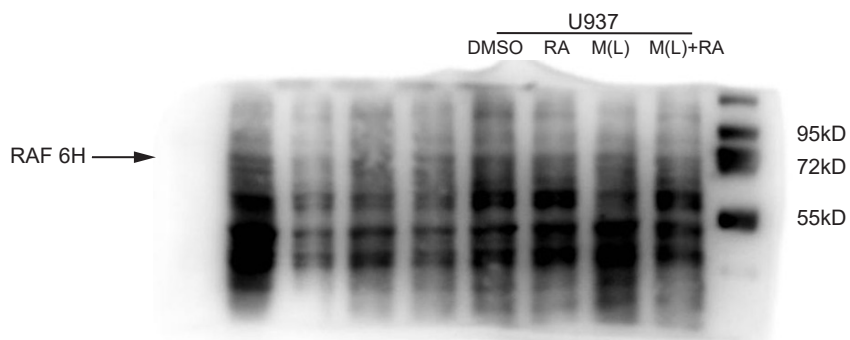
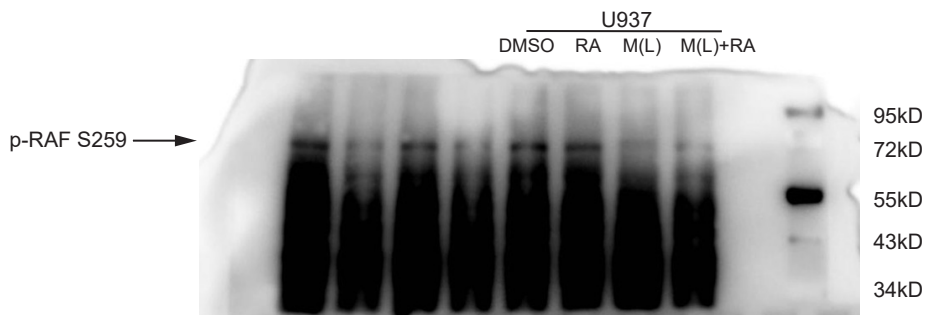
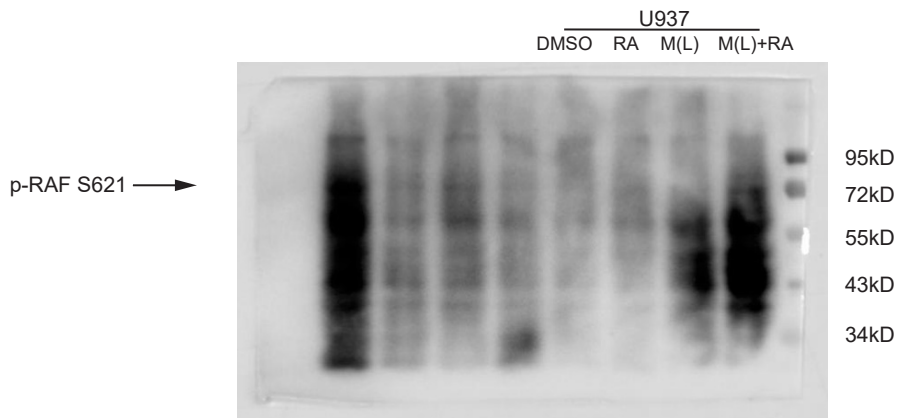
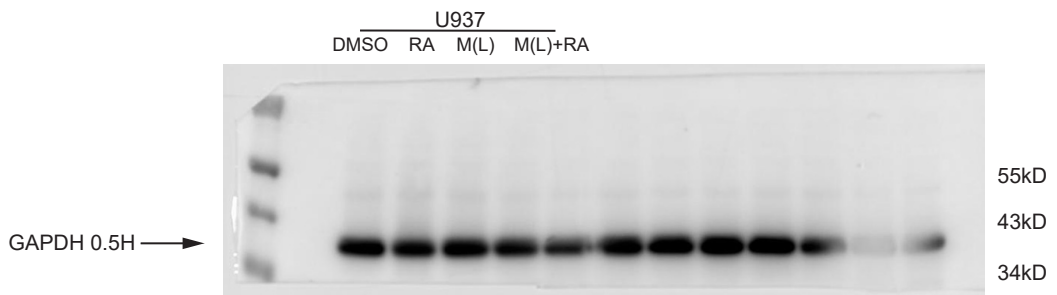
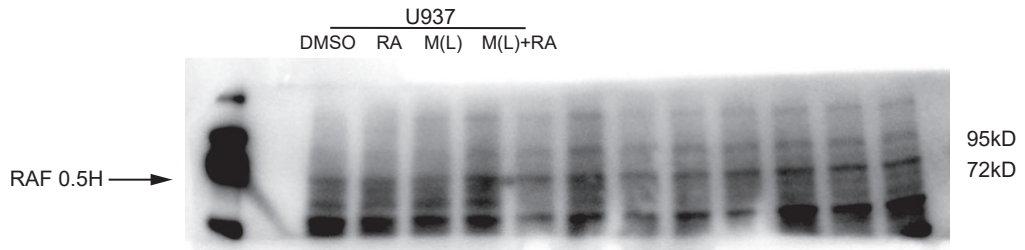
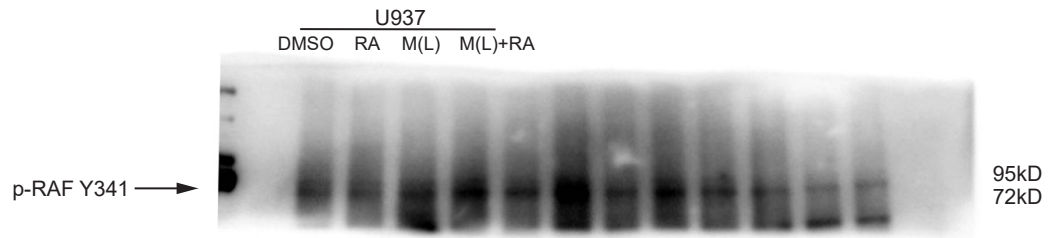
2A



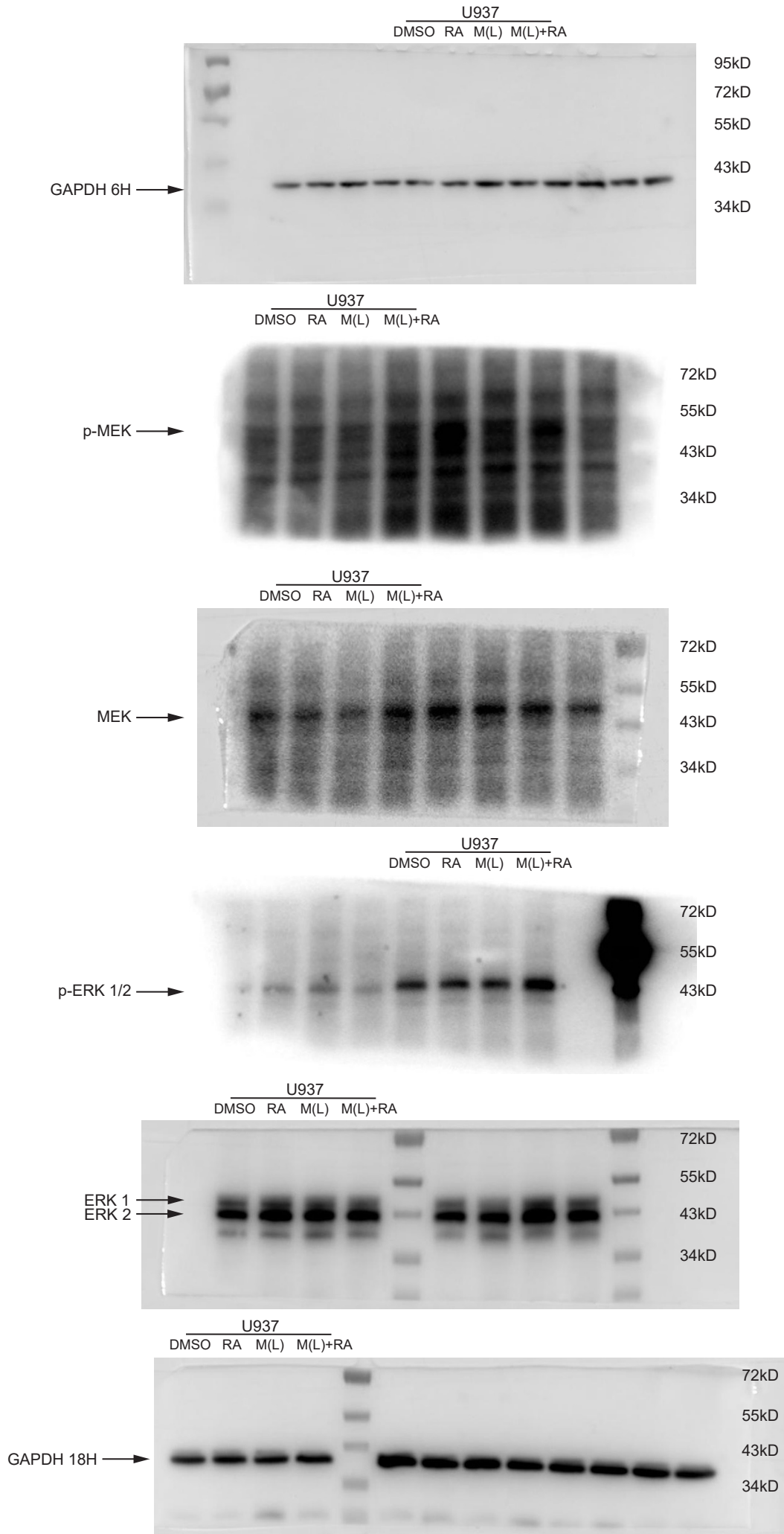
2A



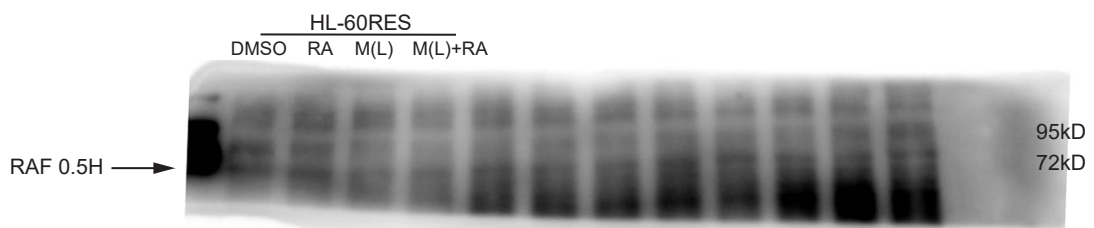
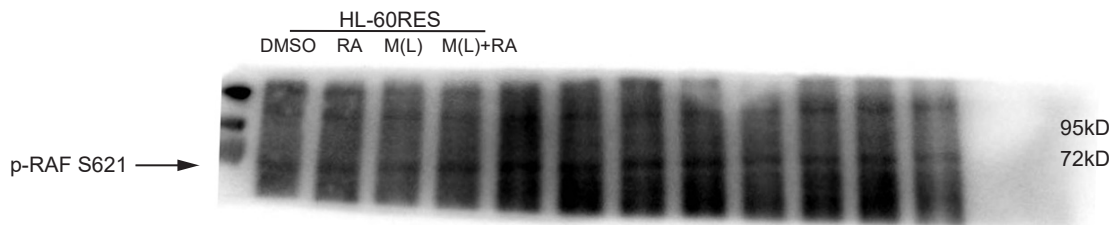
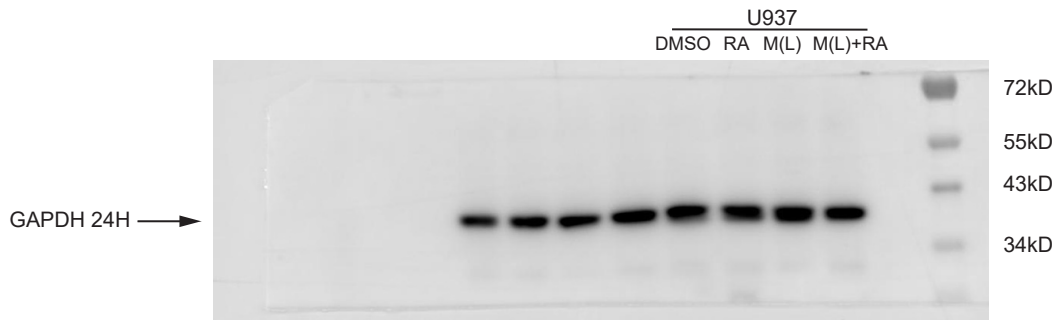
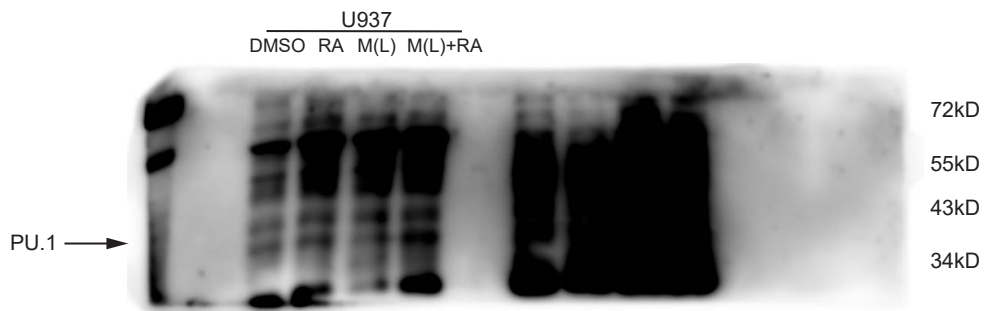
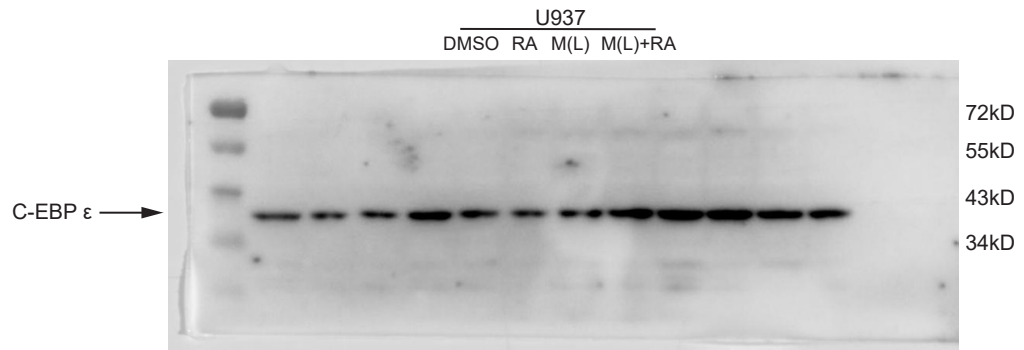
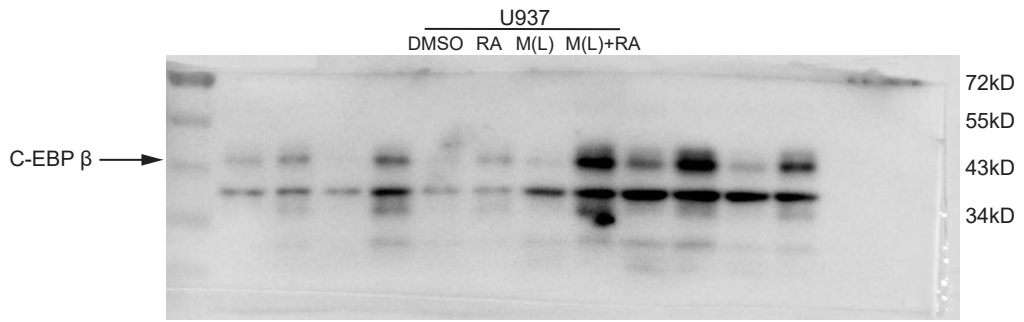
2A



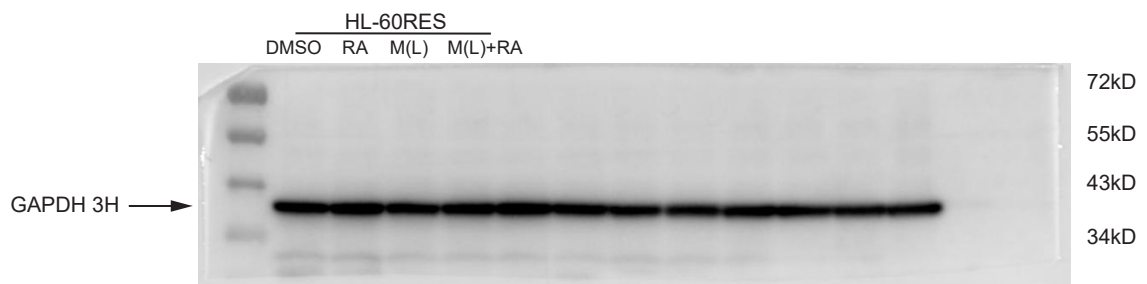
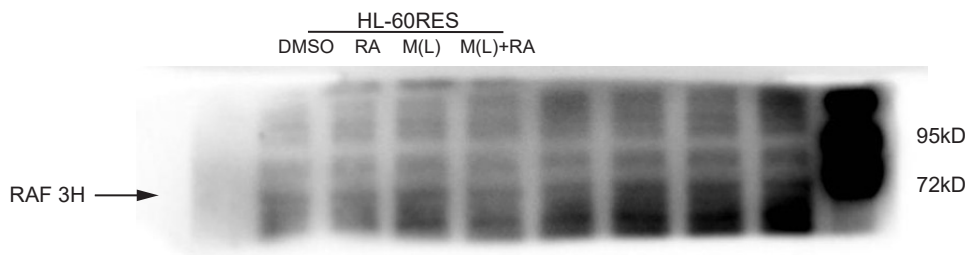
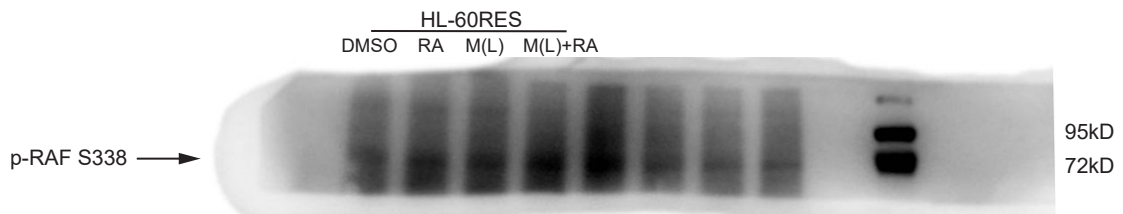
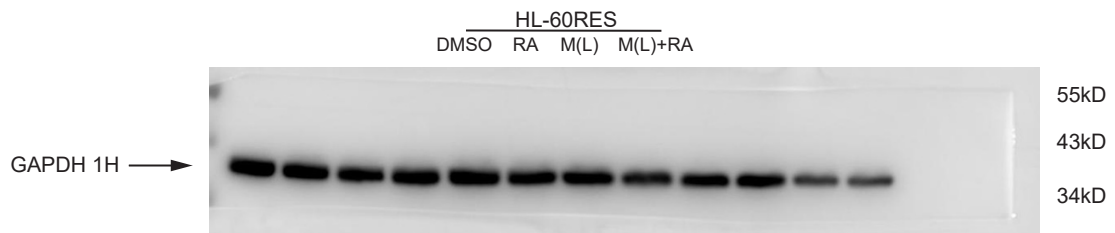
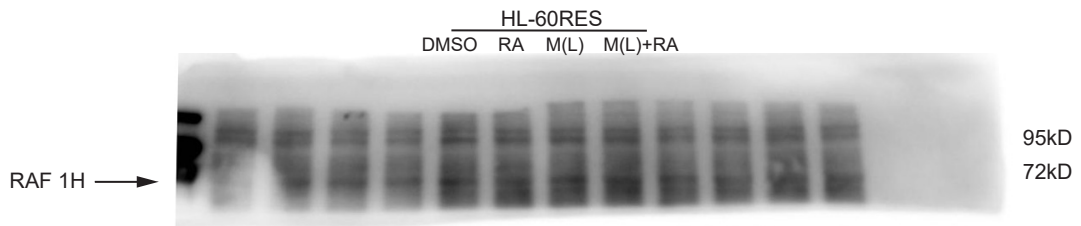
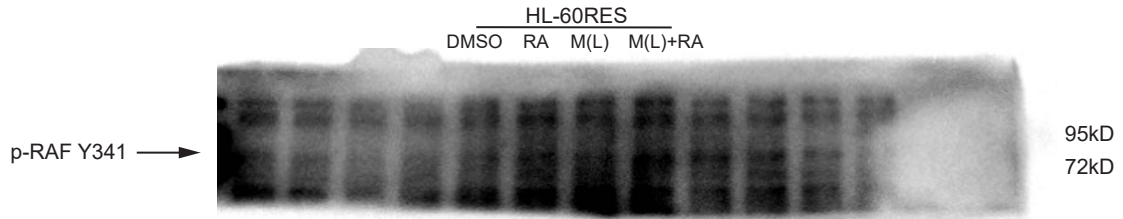
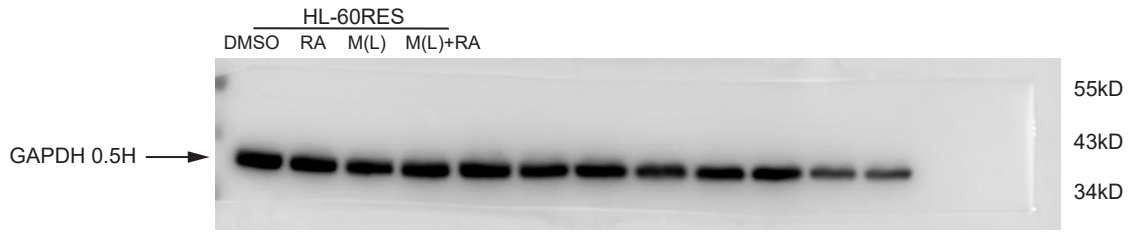
2A



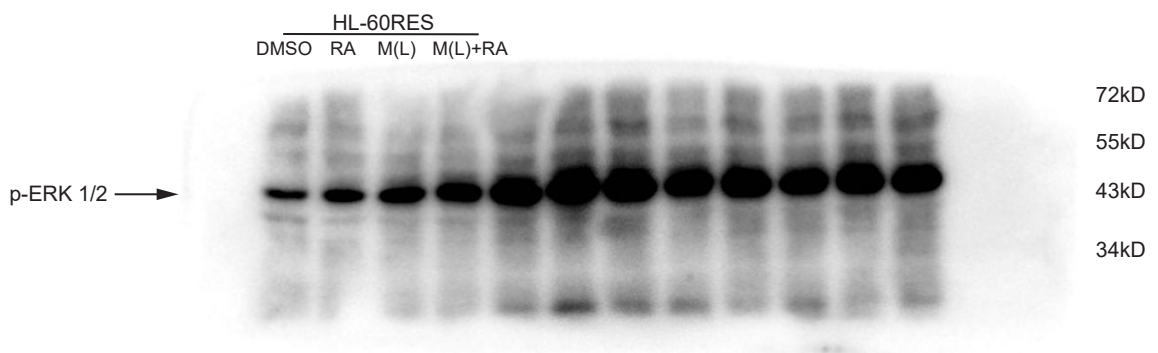
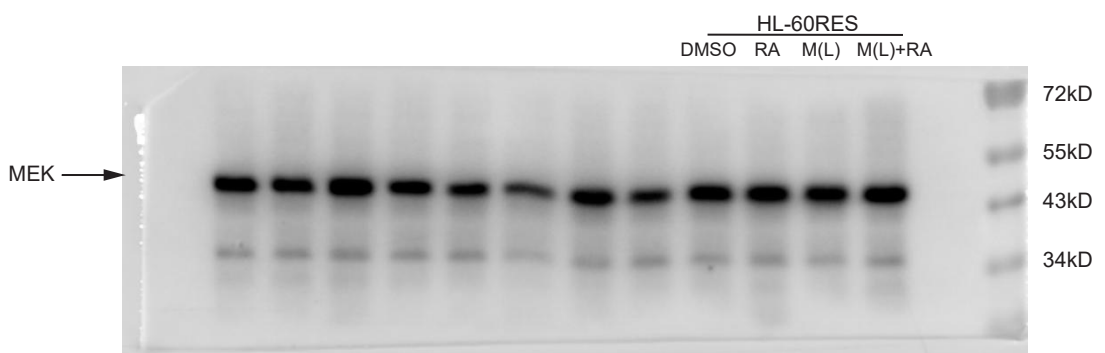
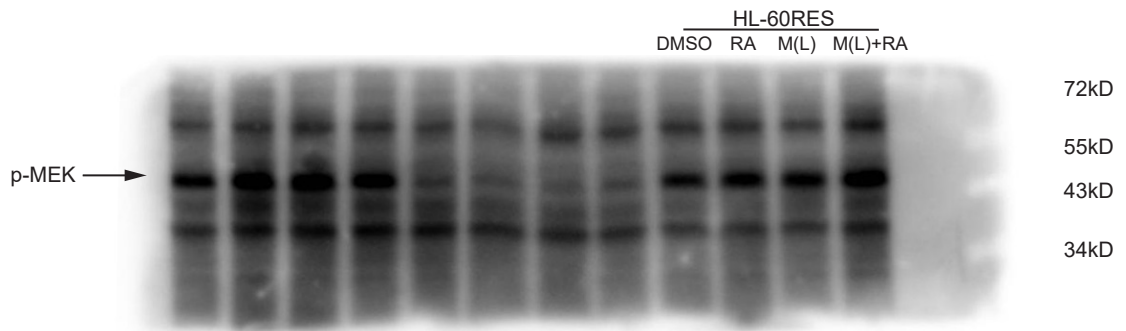
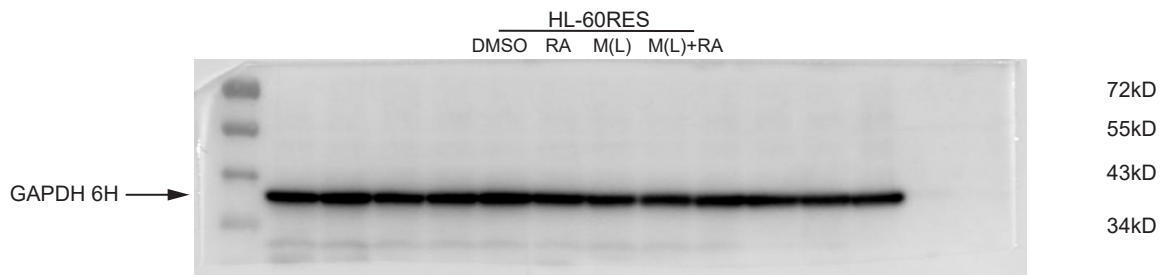
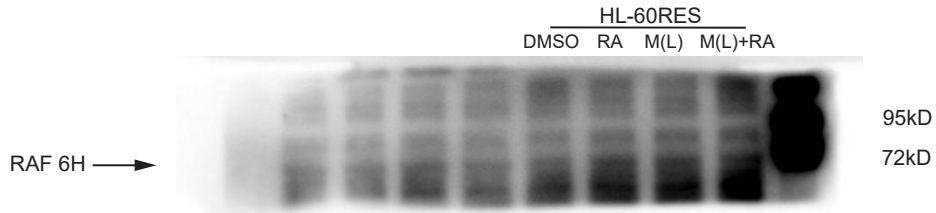
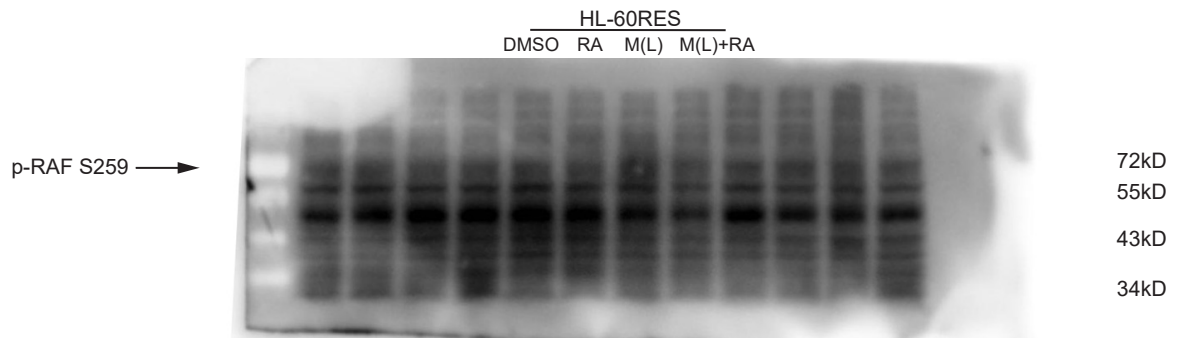
2A



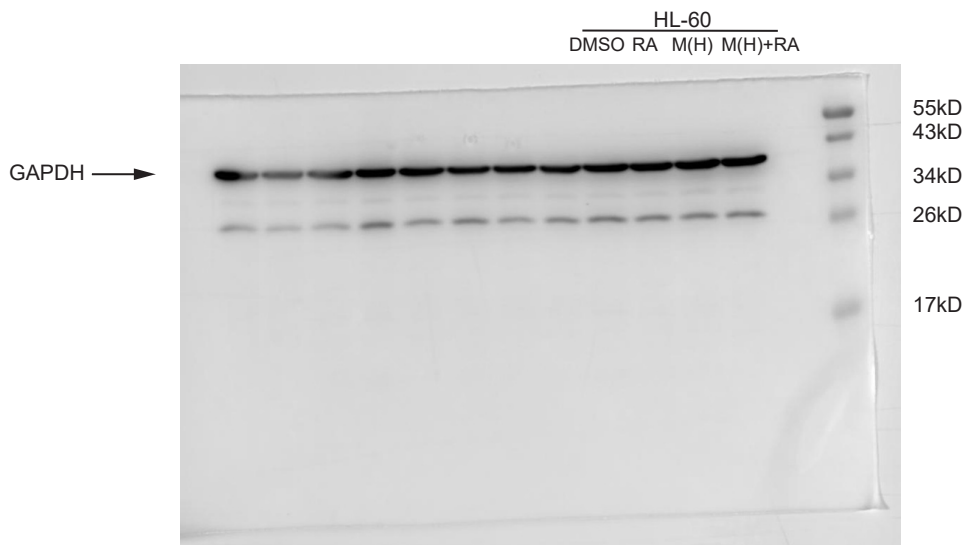
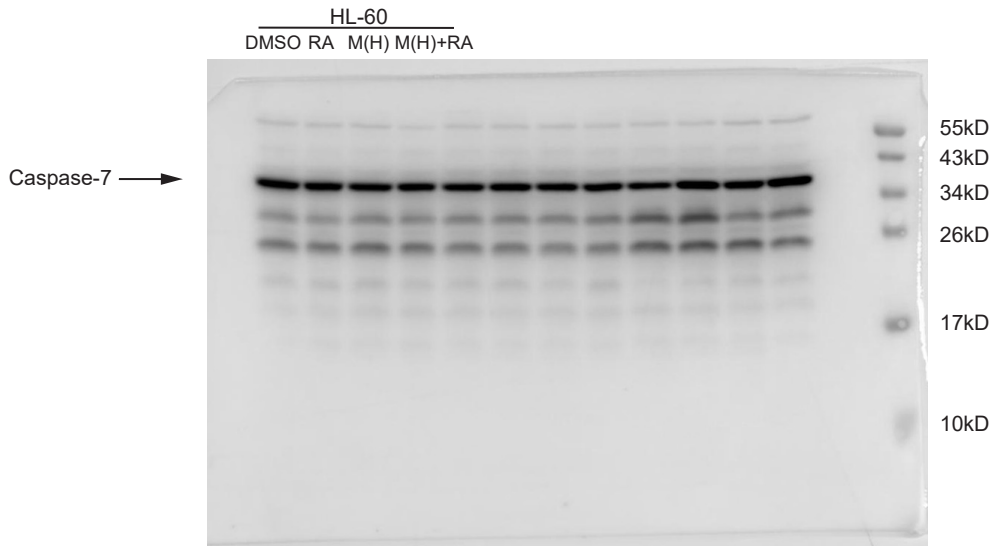
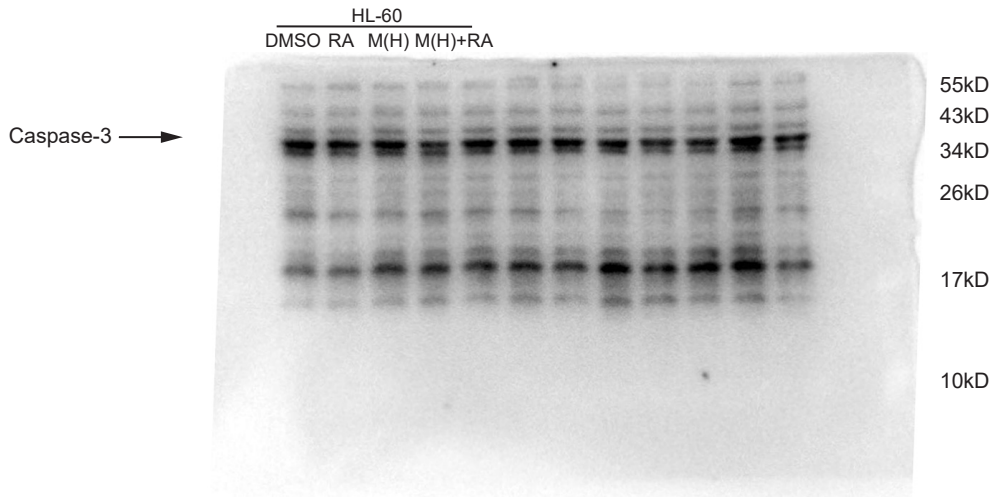
2A



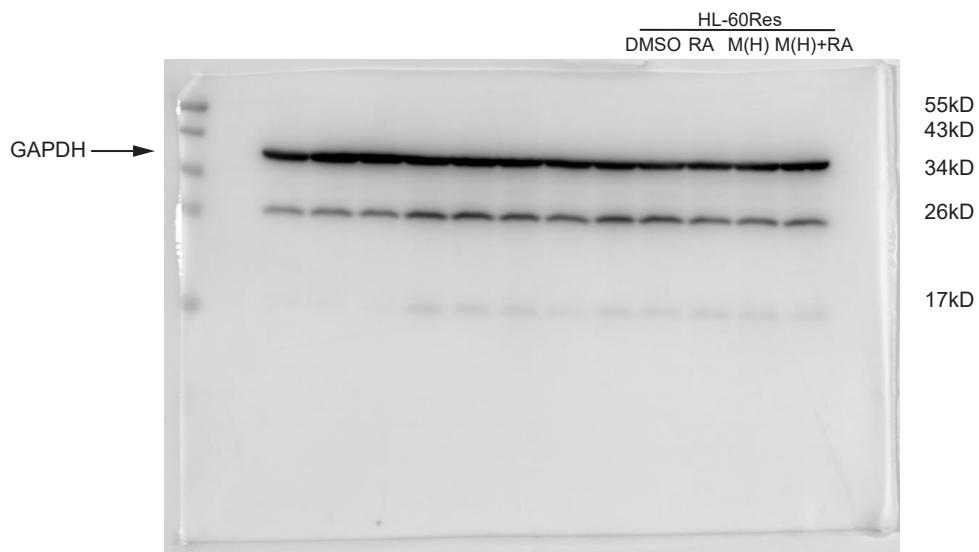
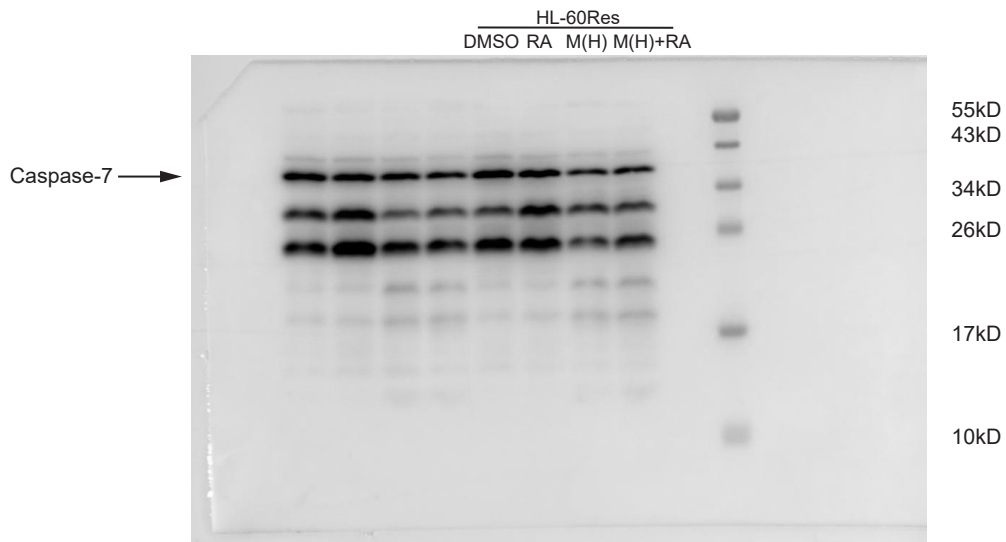
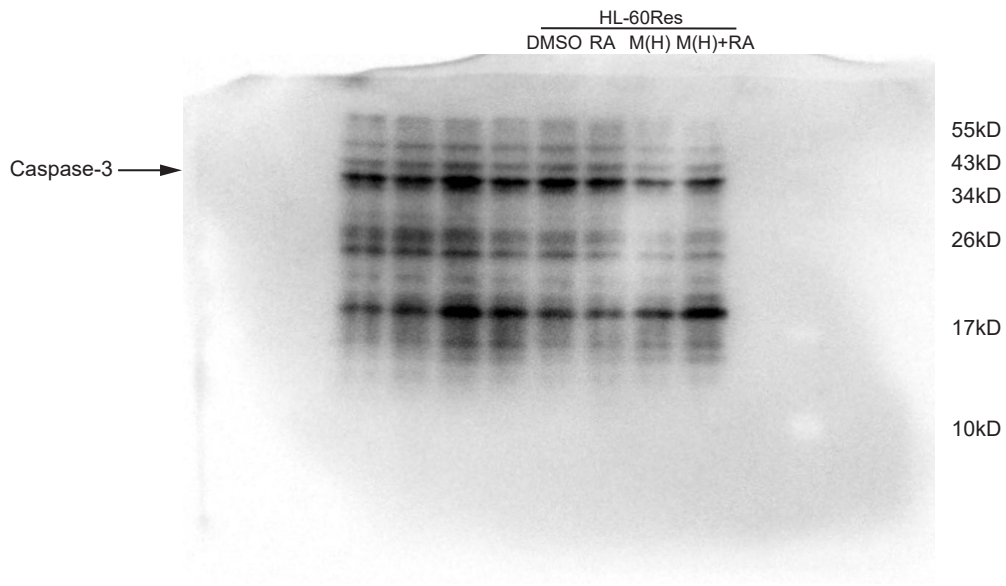
2A



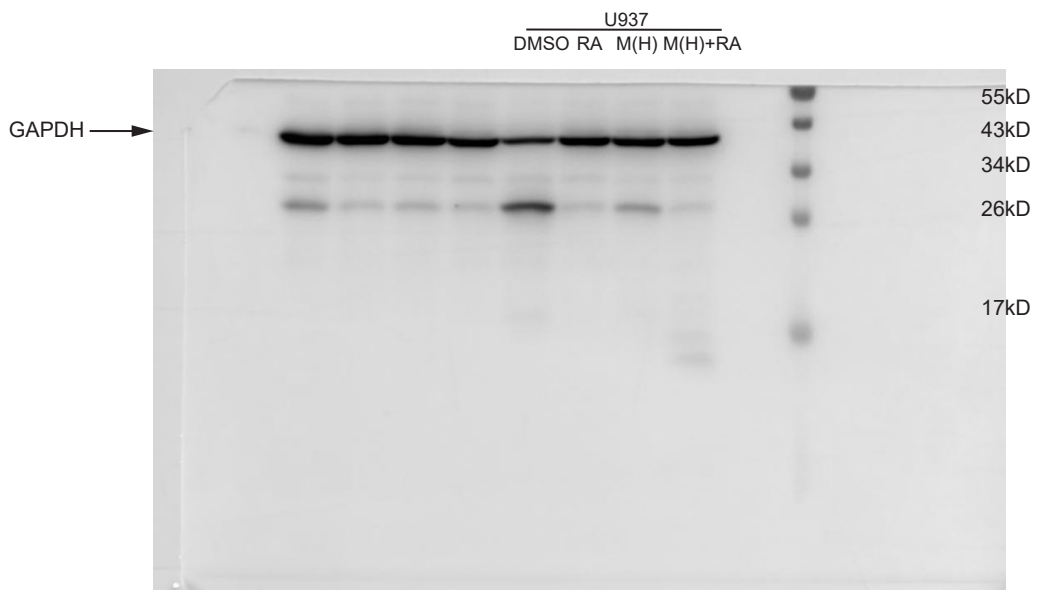
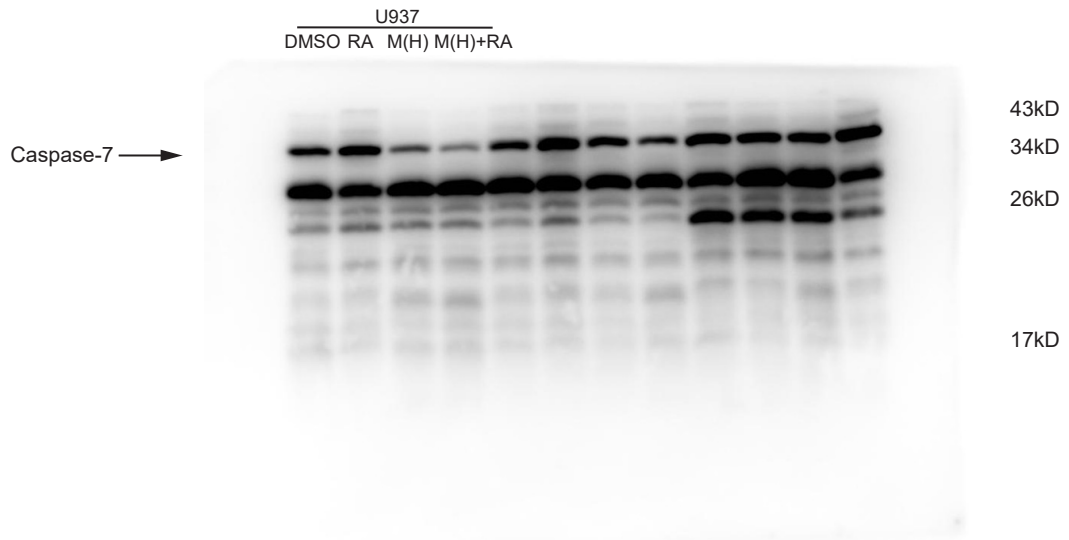
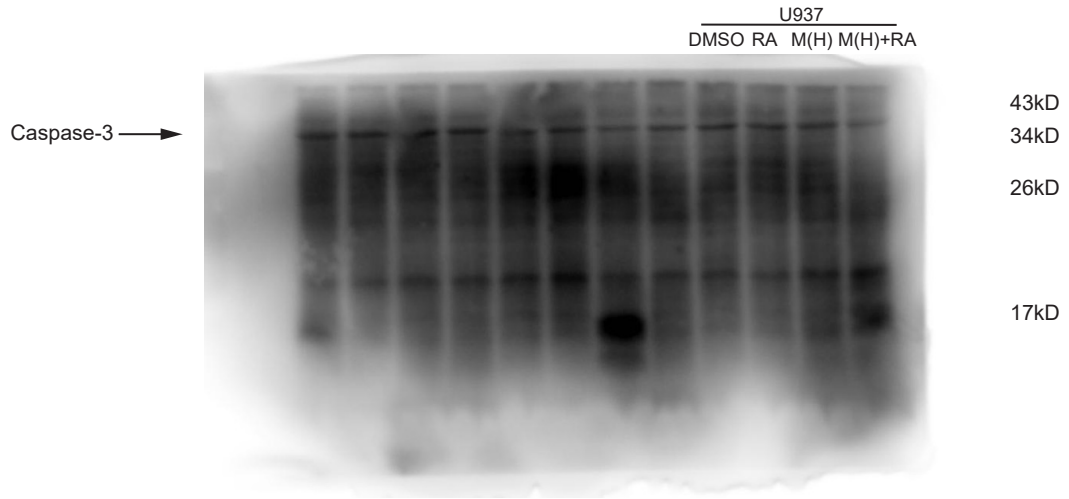
2B



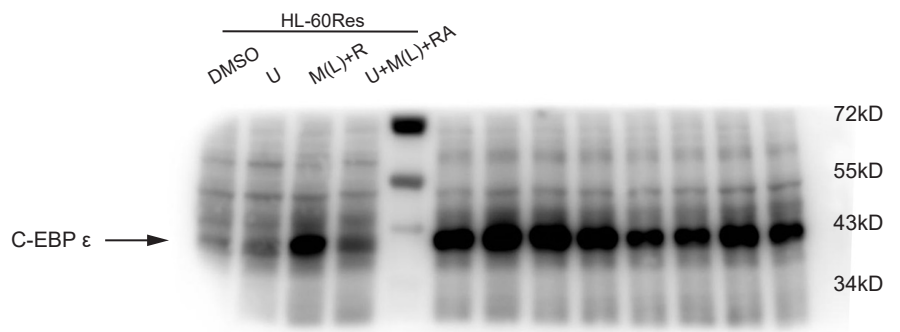
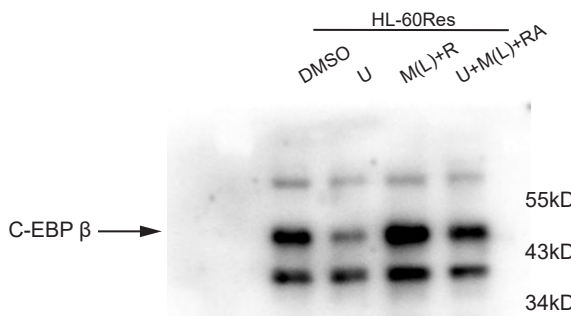
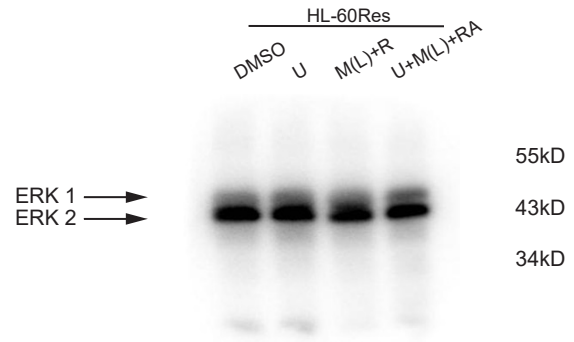
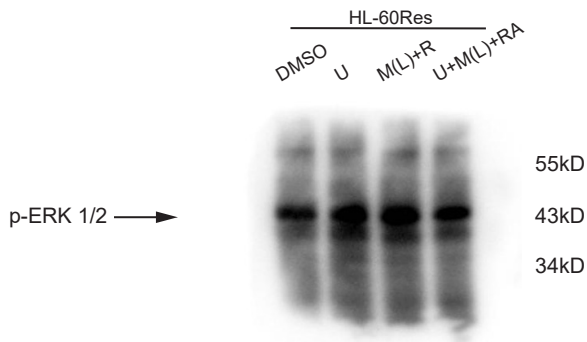
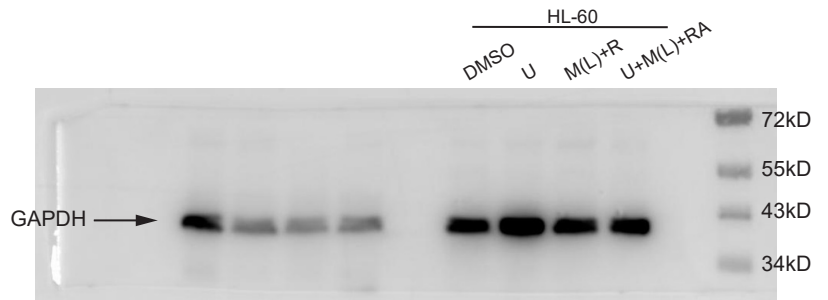
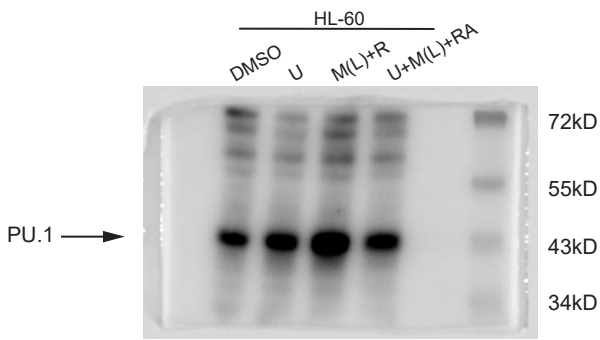
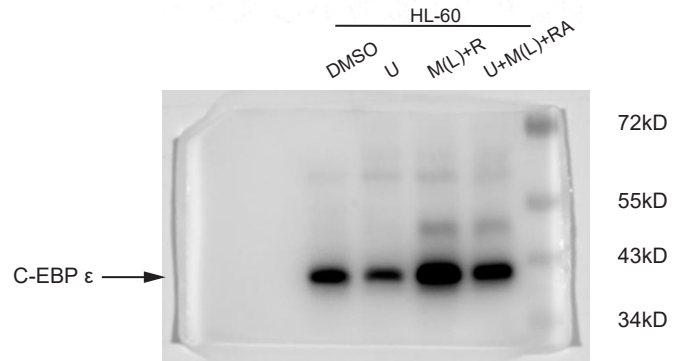
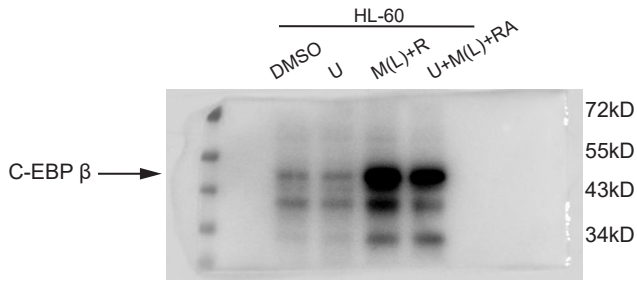
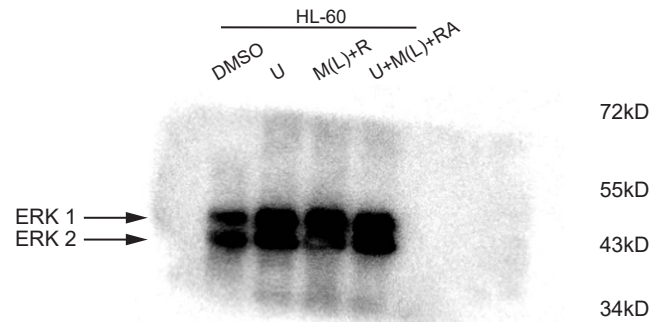
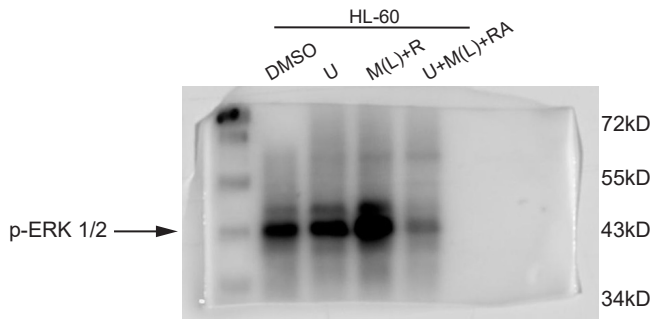
2B



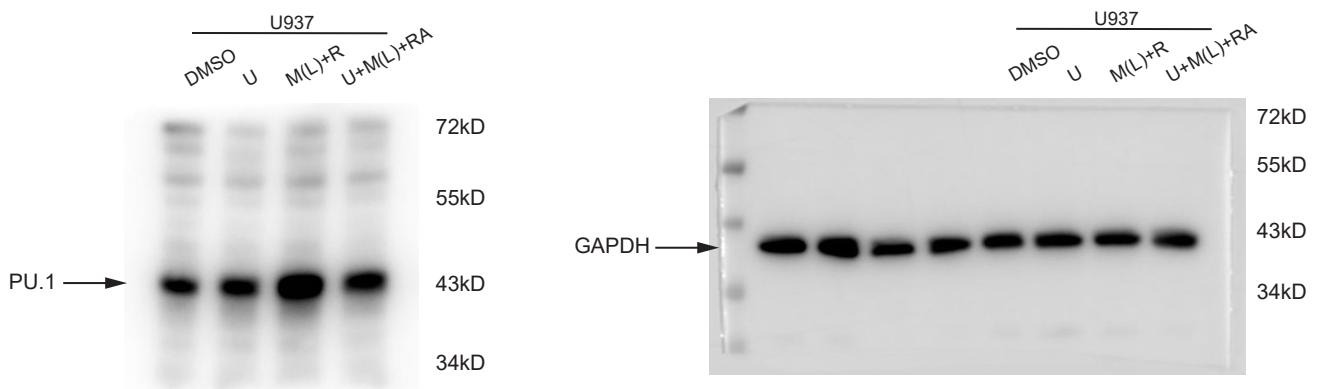
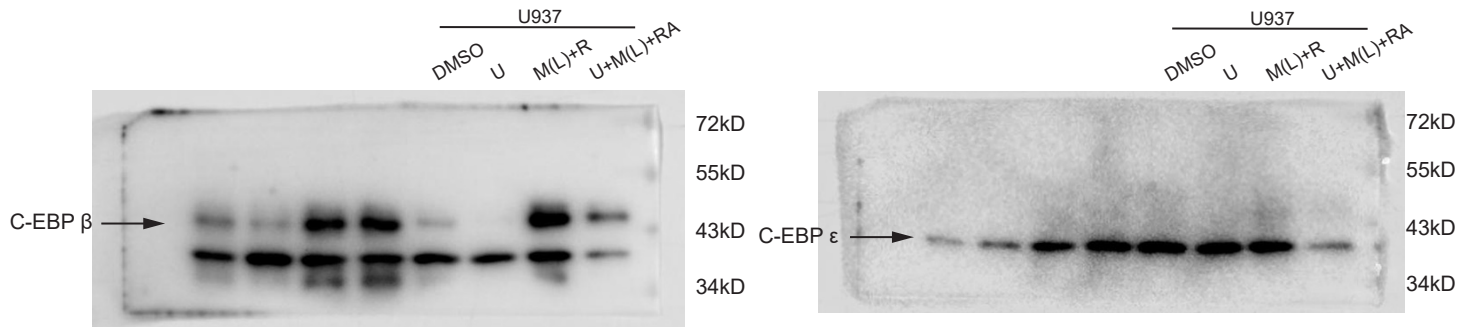
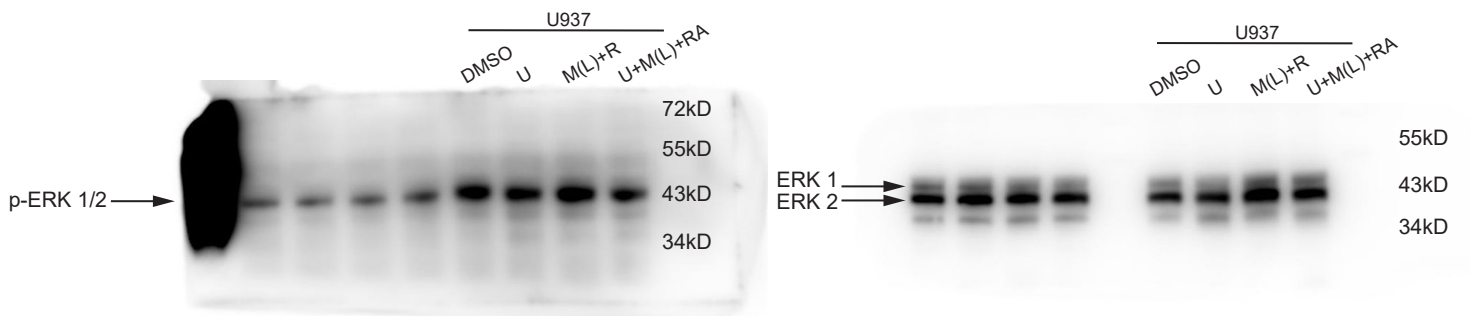
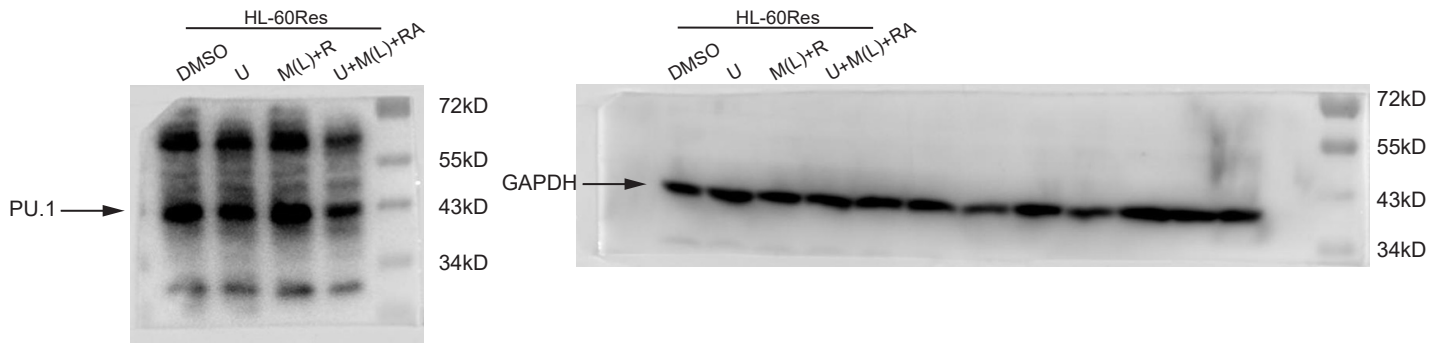
2B



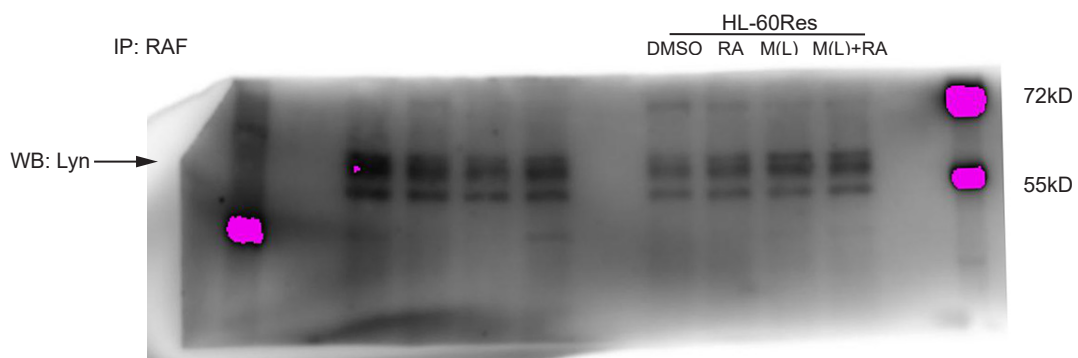
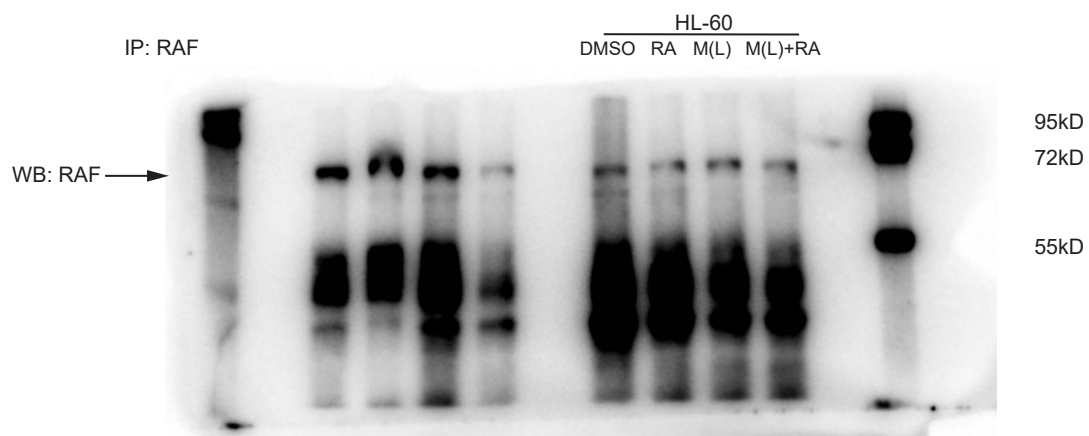
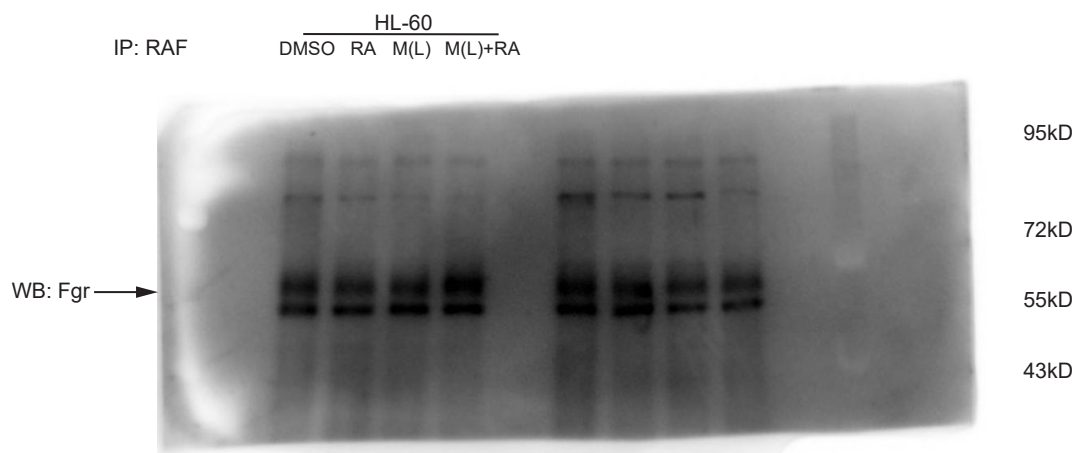
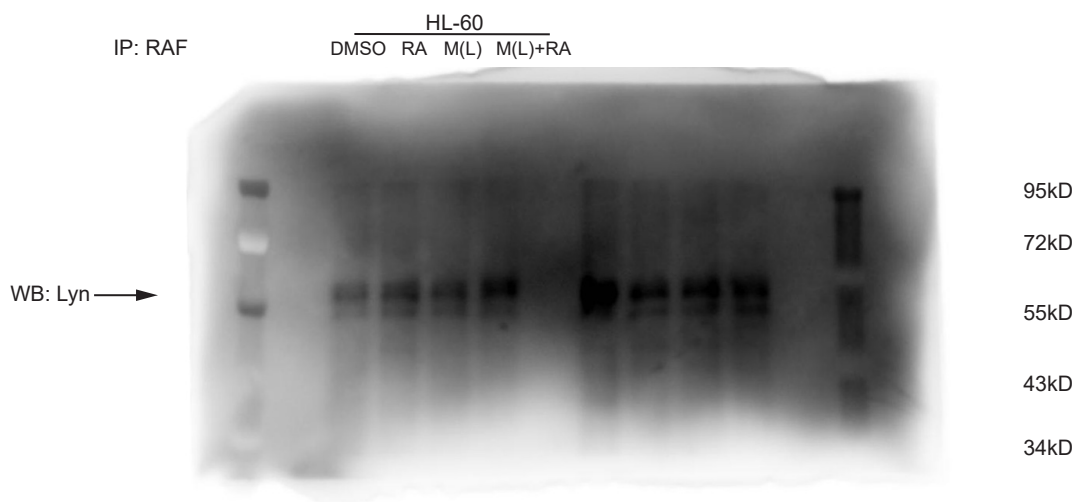
3D



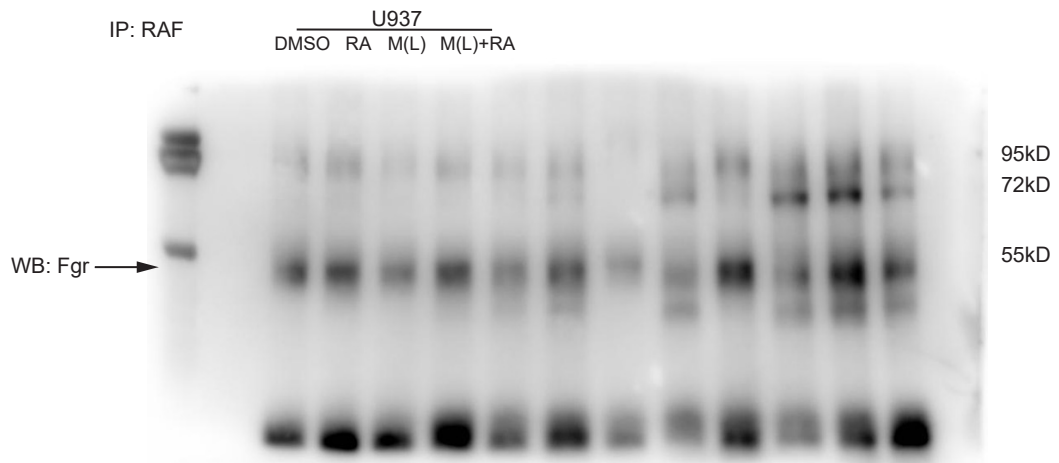
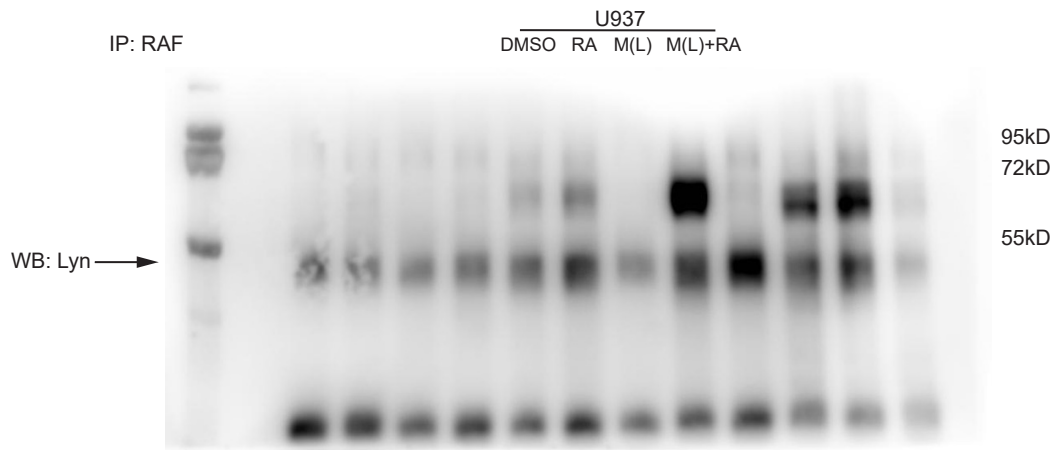
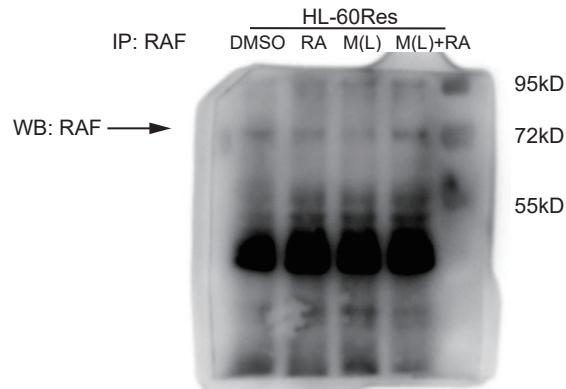
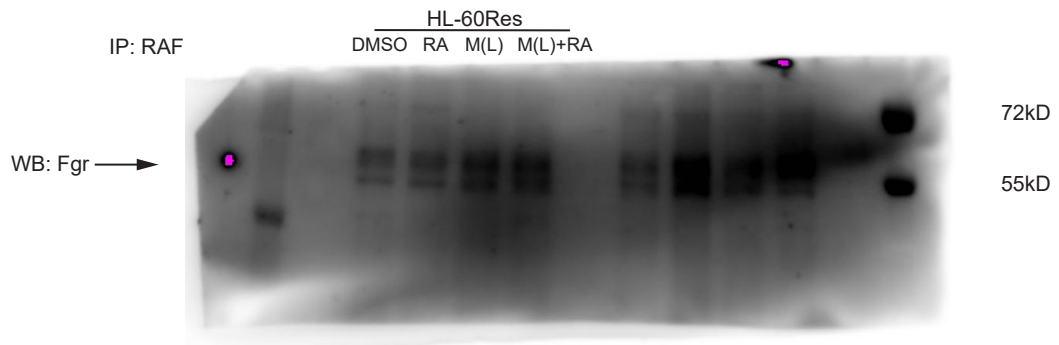
3D



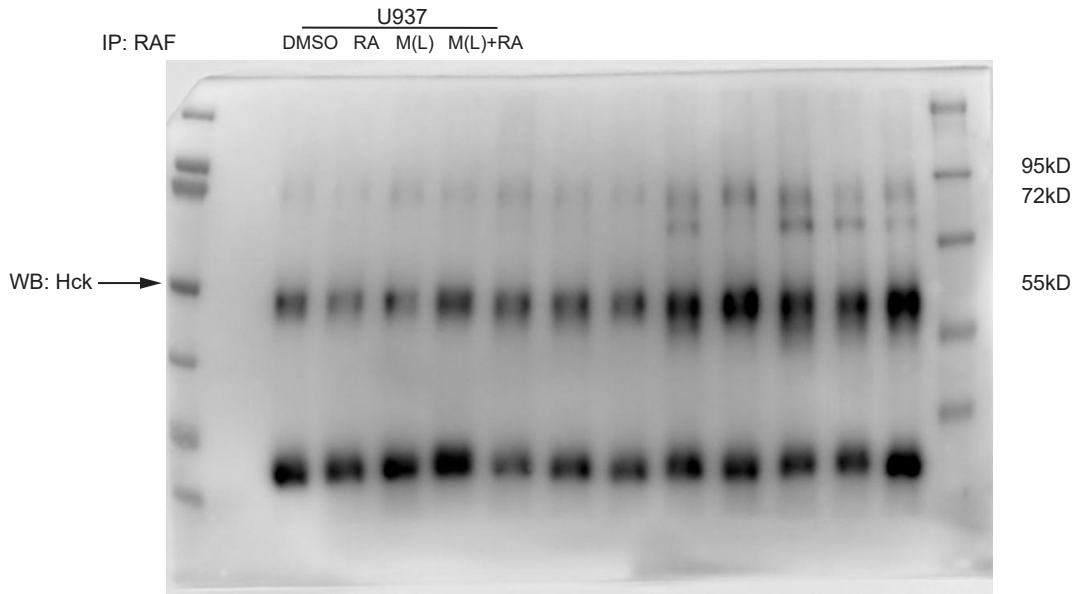
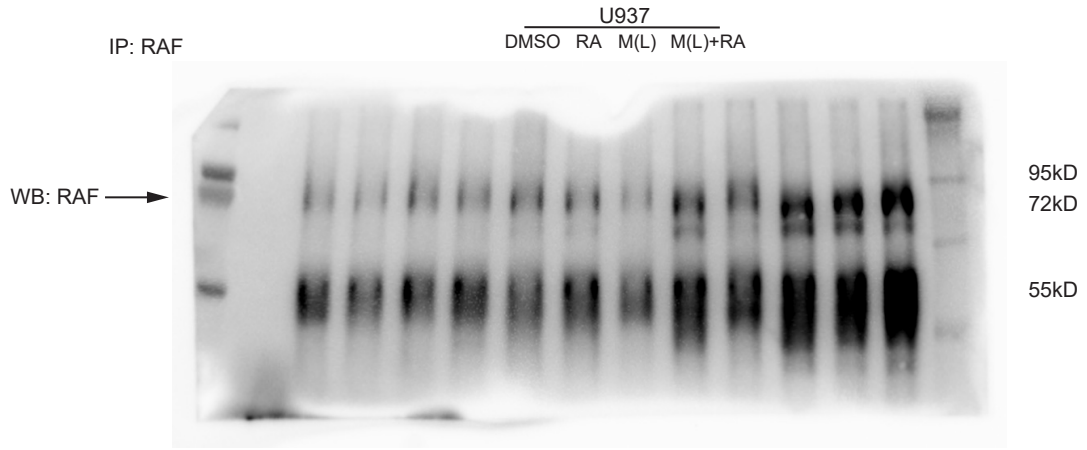
4A



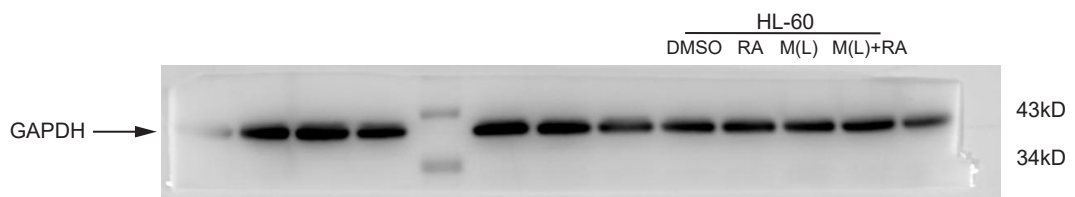
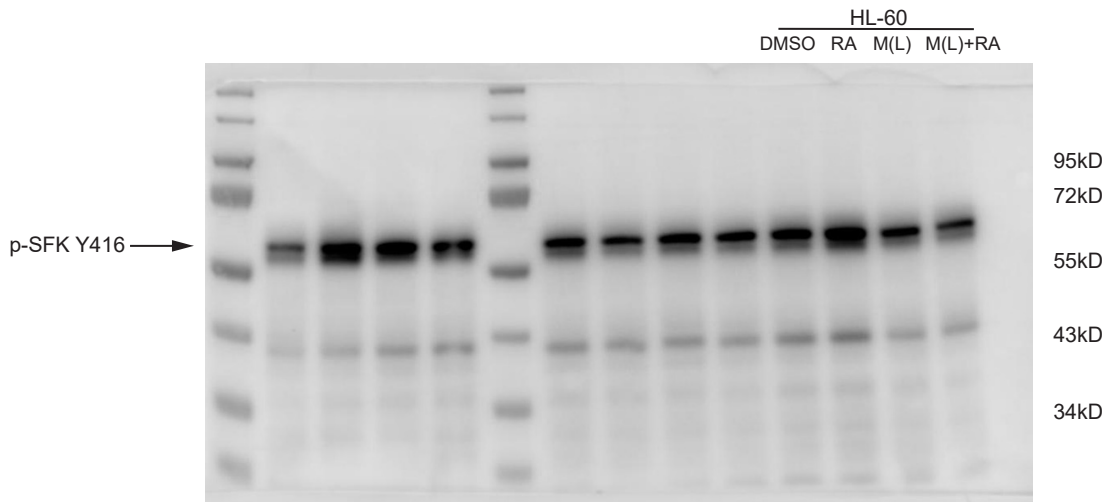
4A



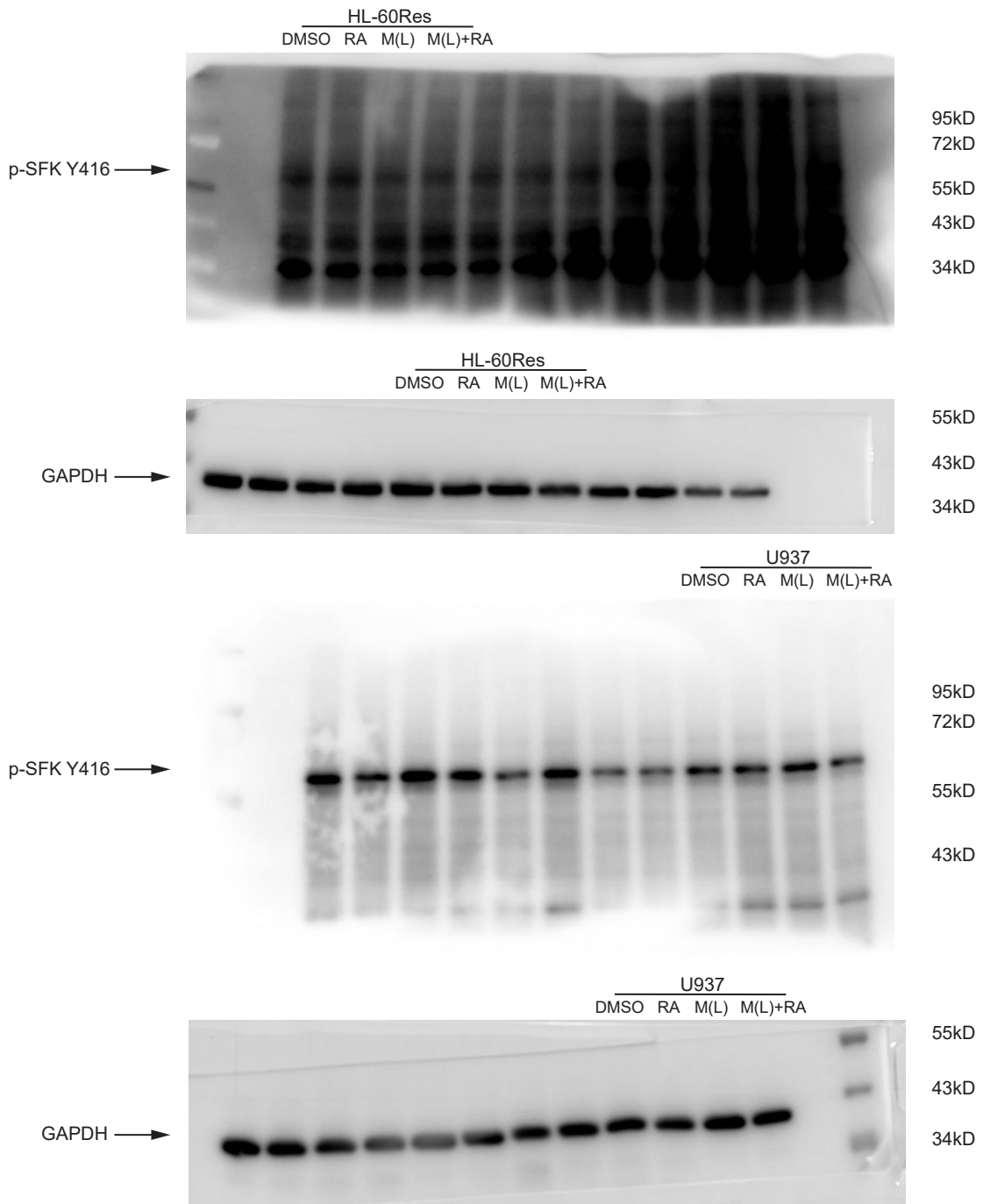
4A



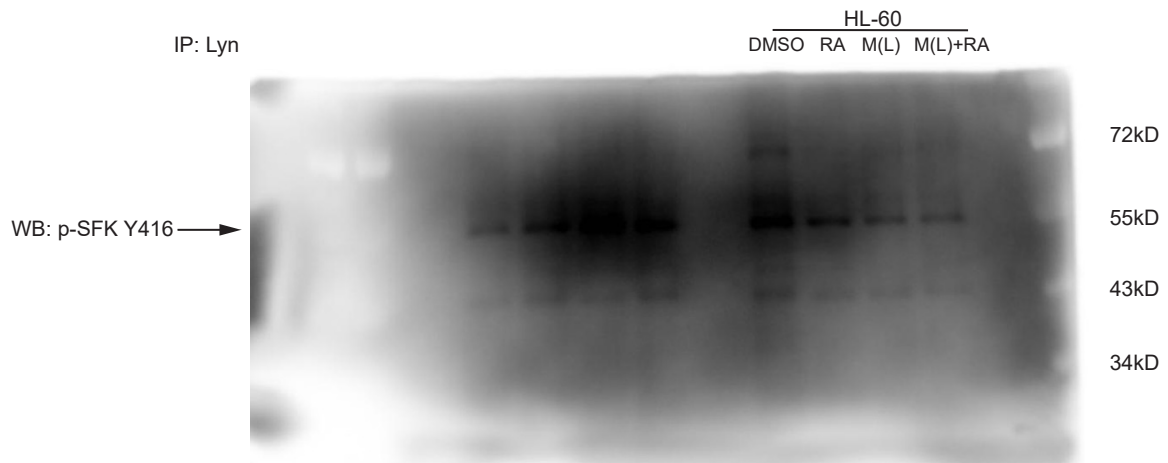
4B



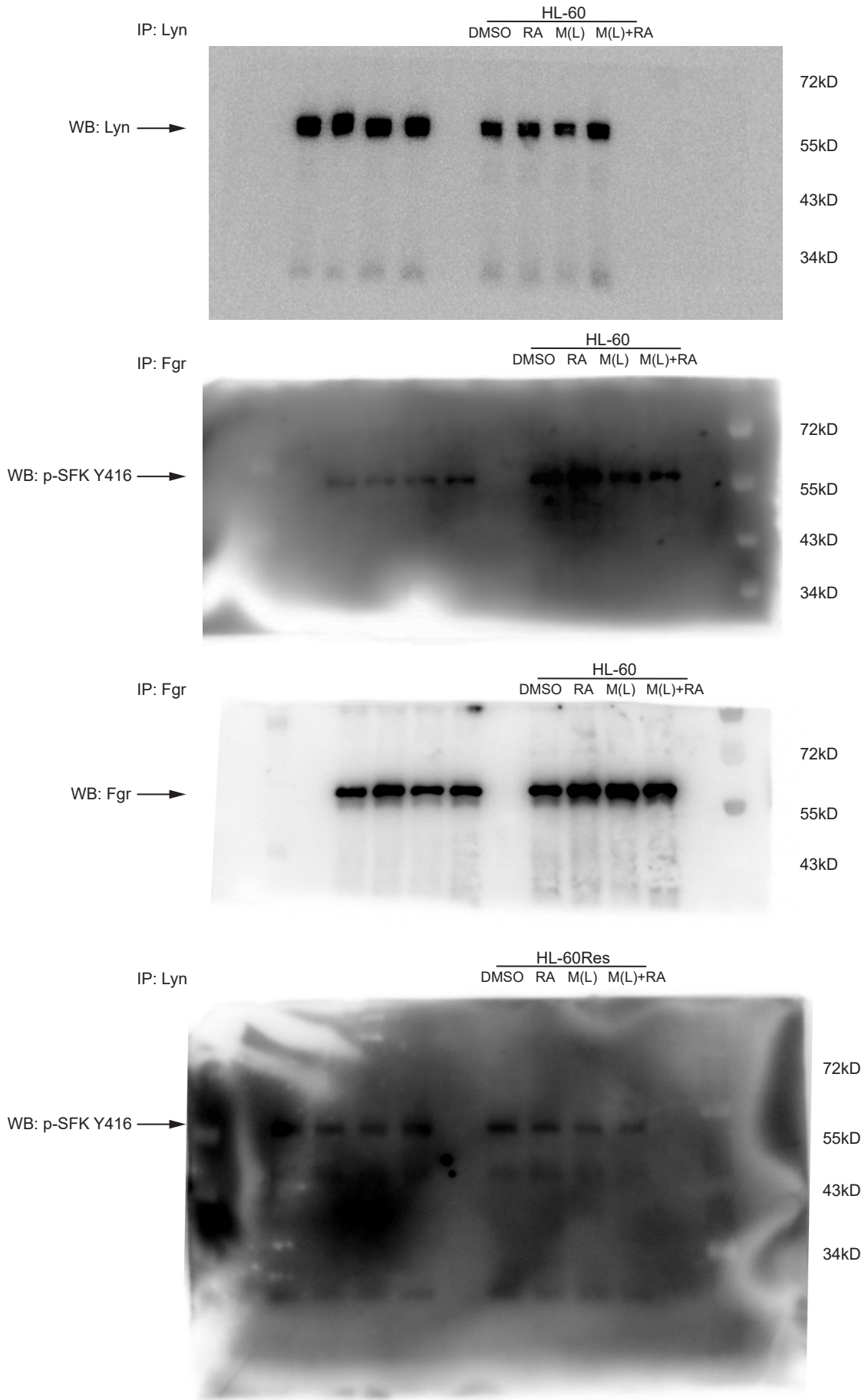
4B



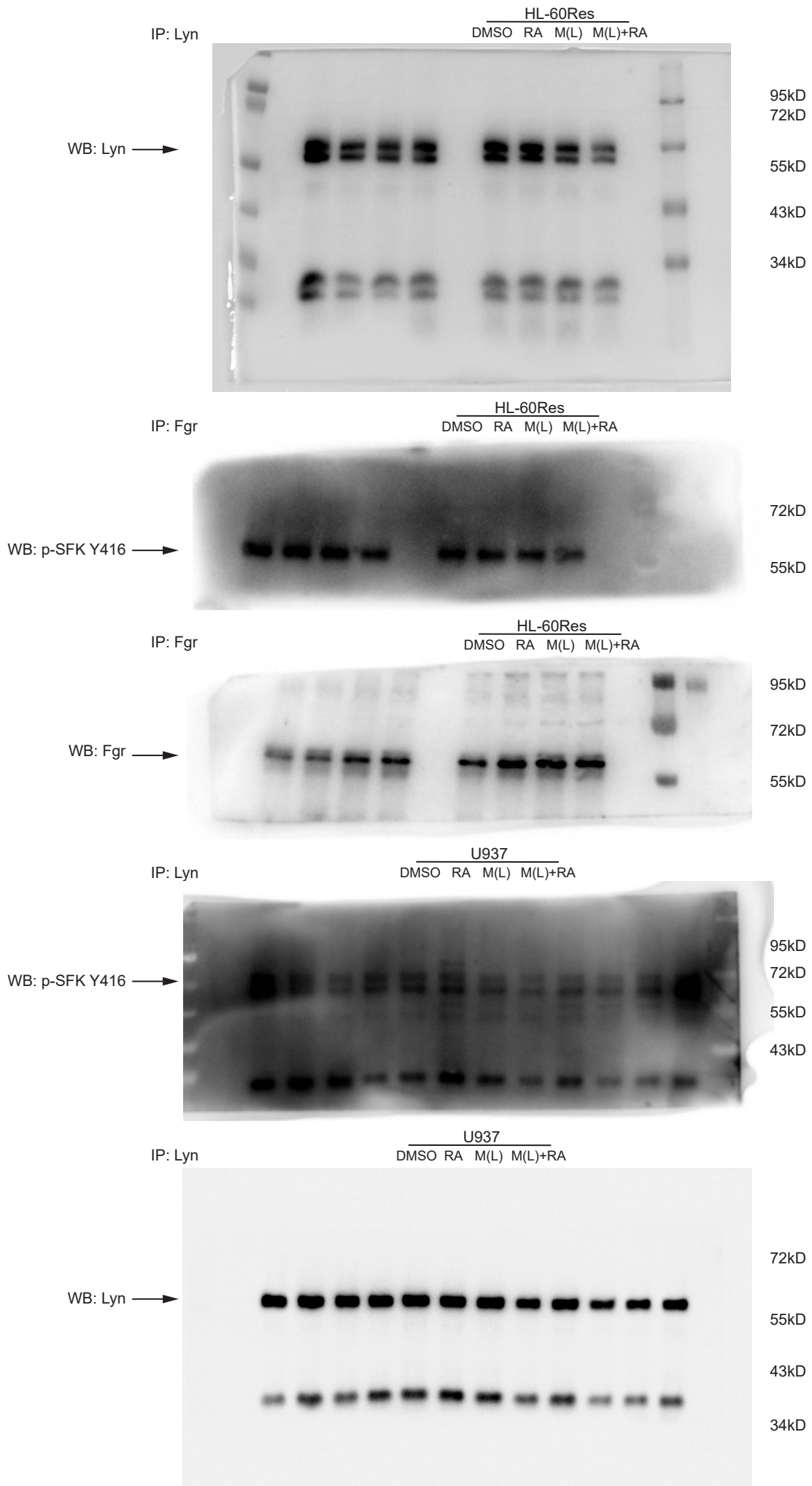
4C



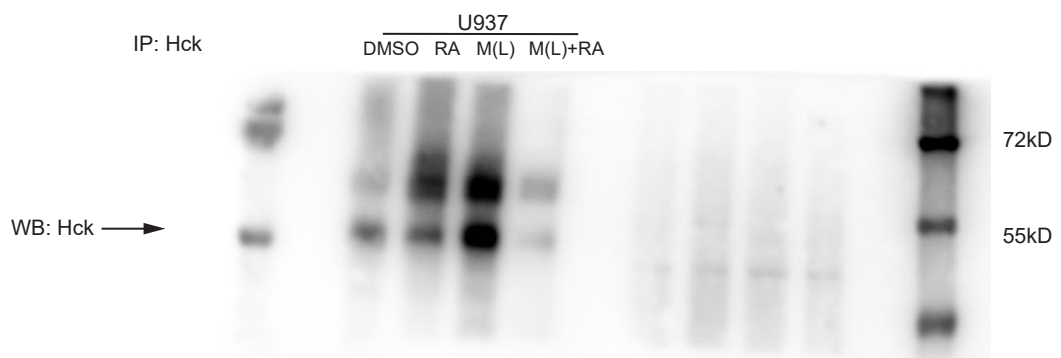
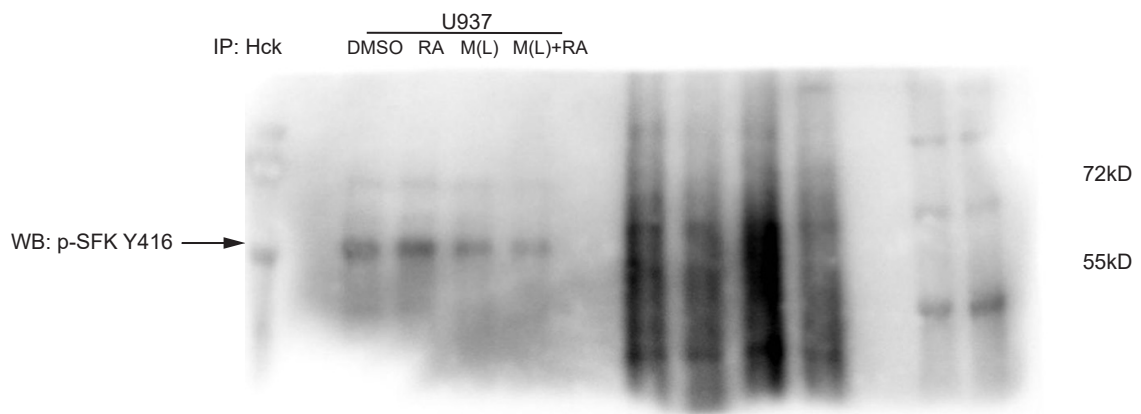
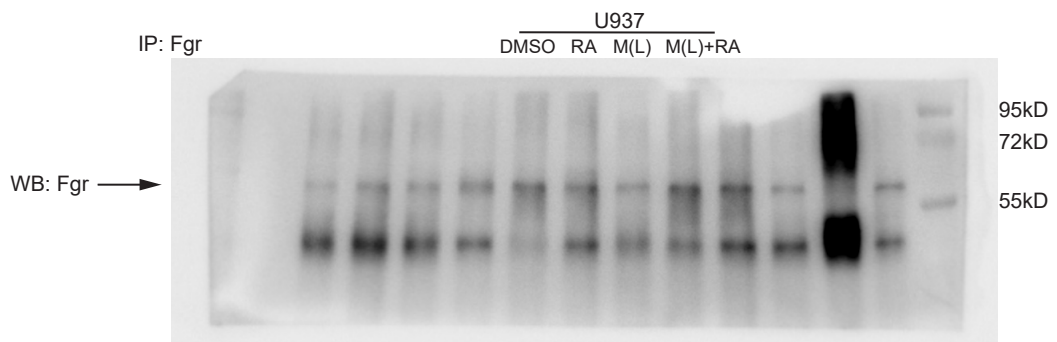
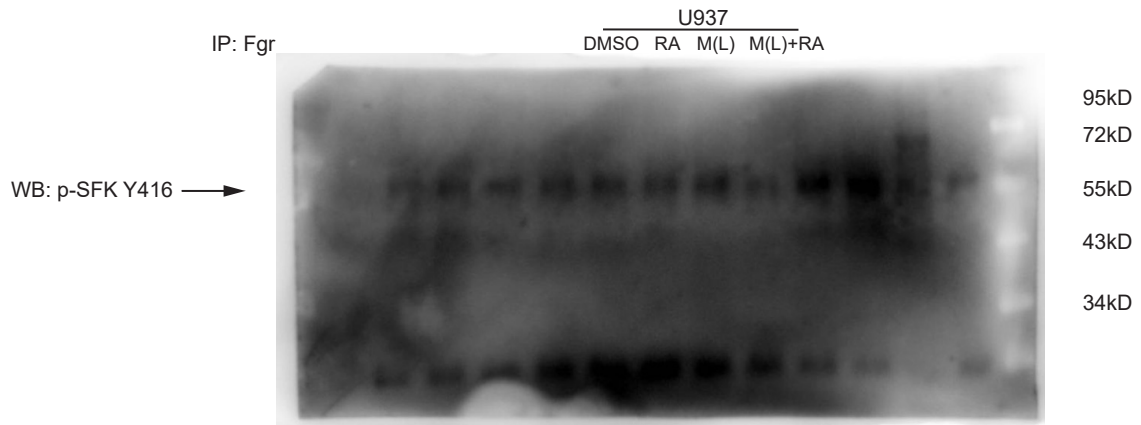
4C



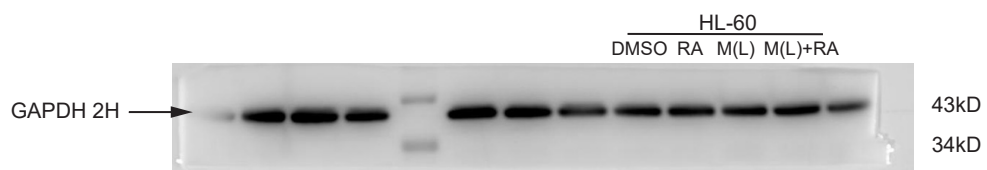
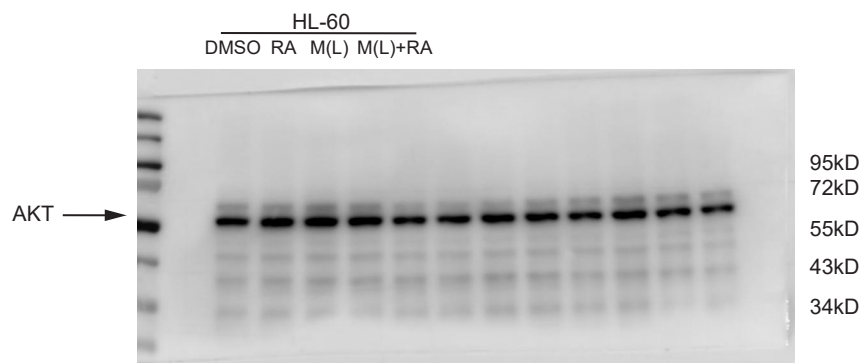
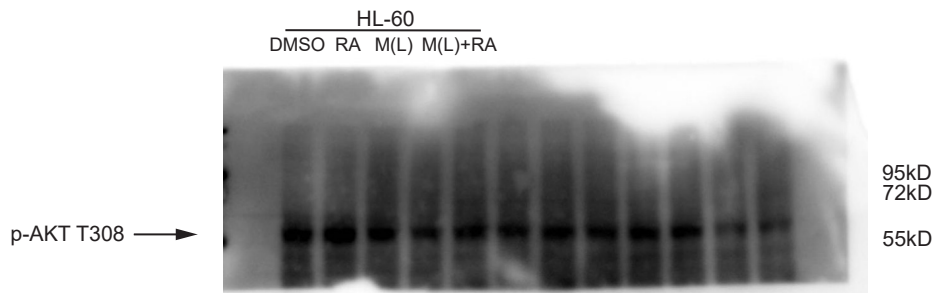
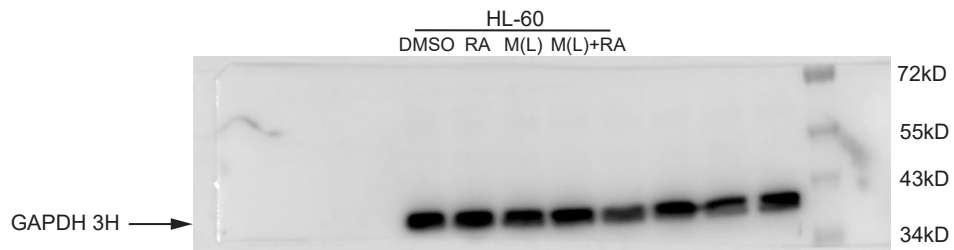
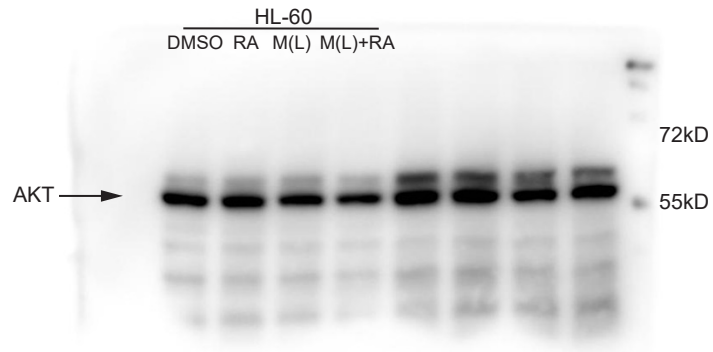
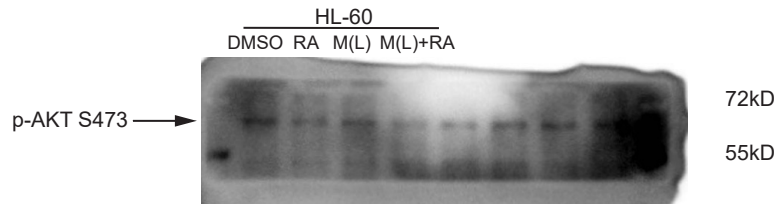
4C



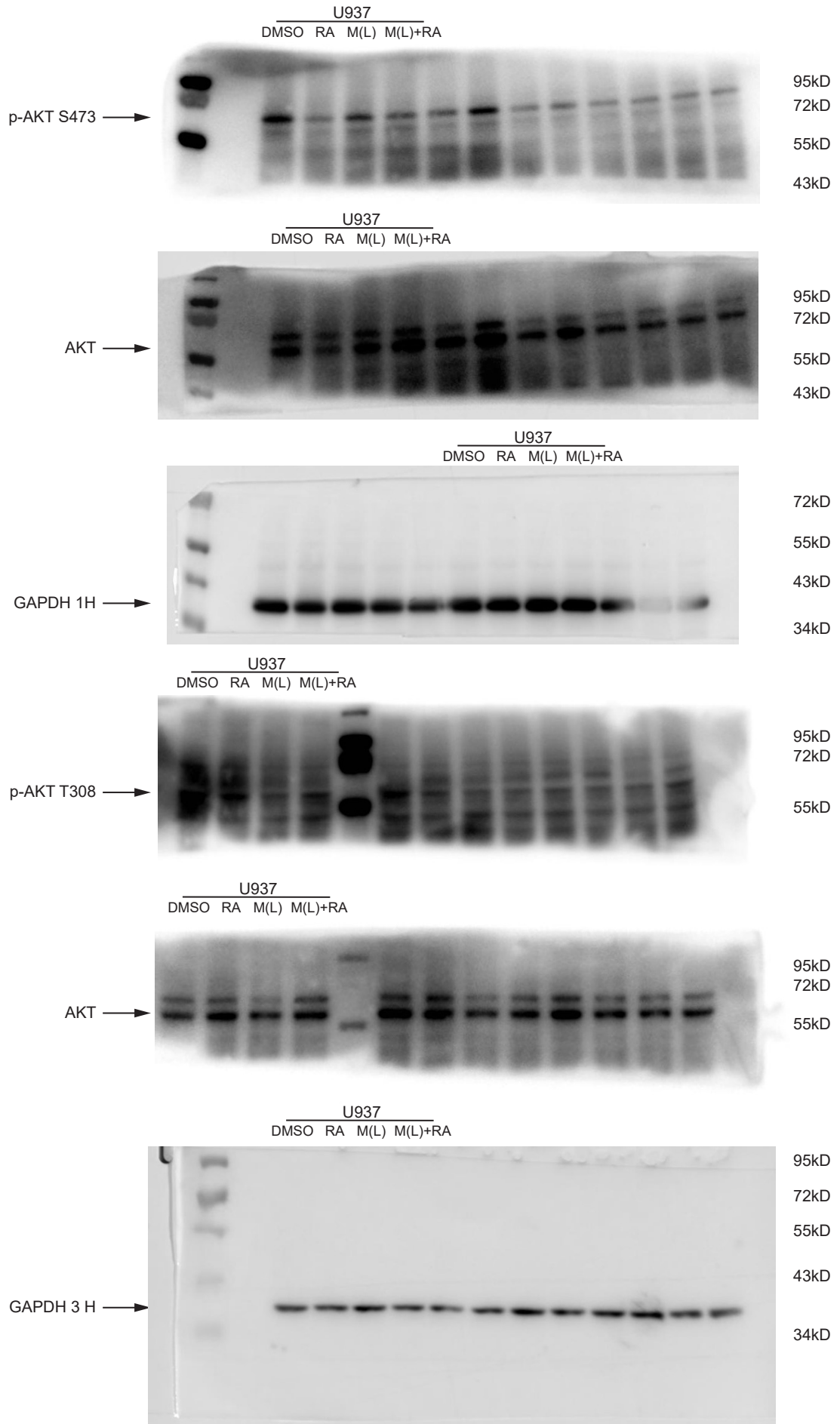
4C



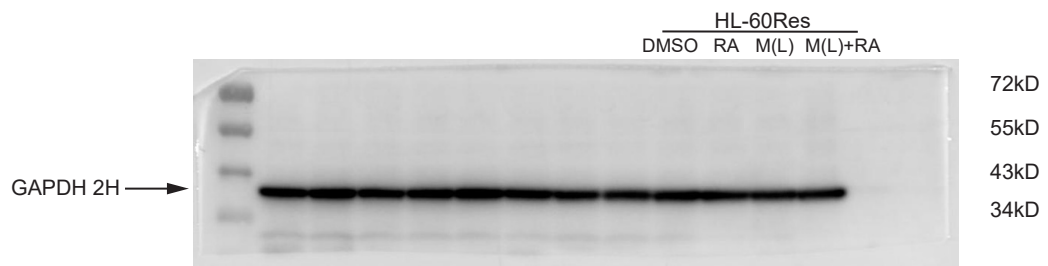
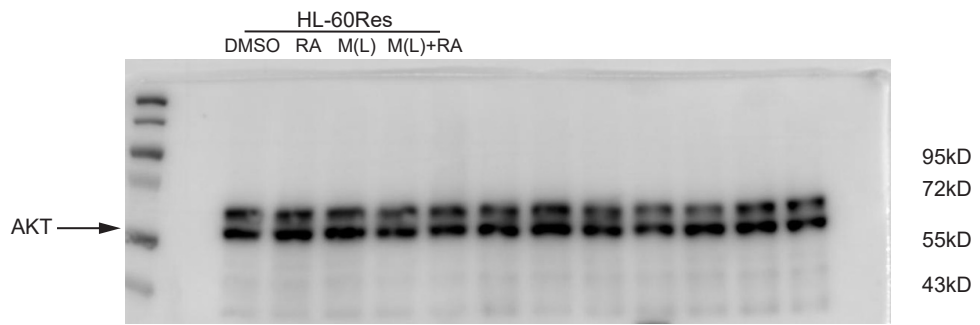
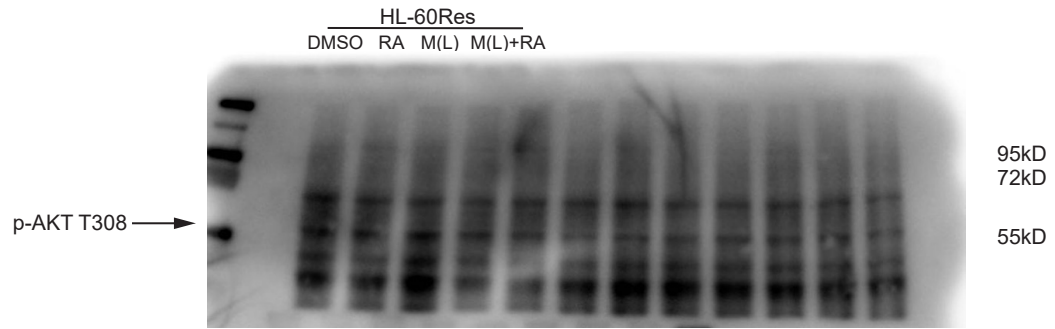
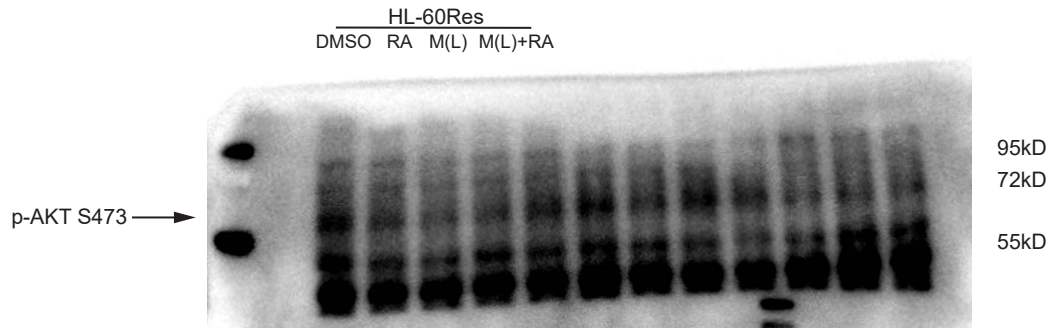
5A



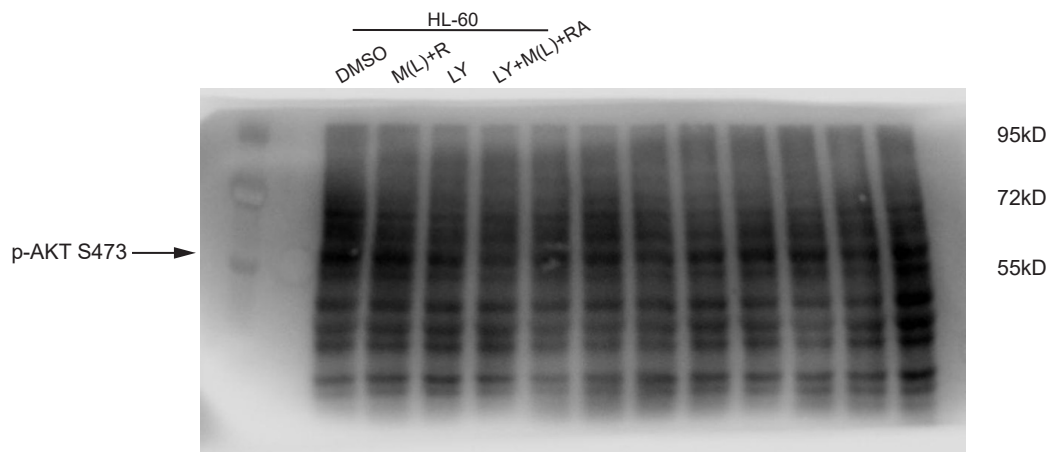
5A



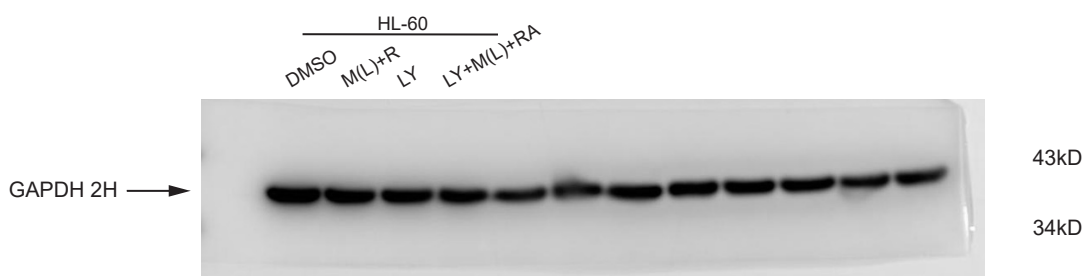
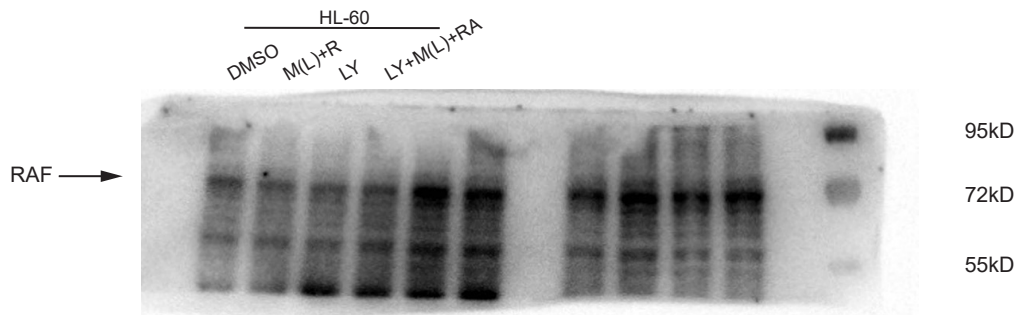
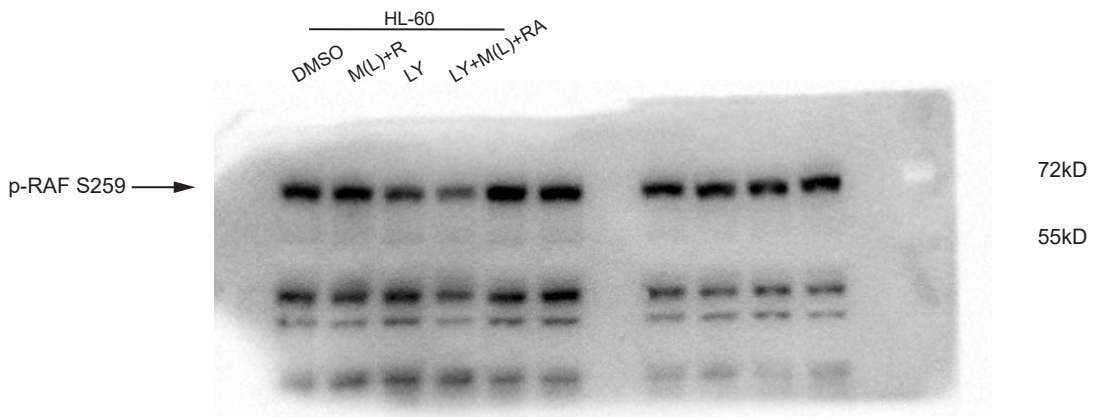
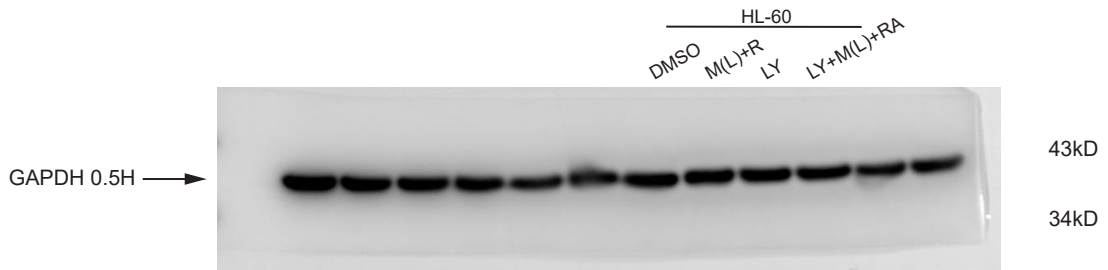
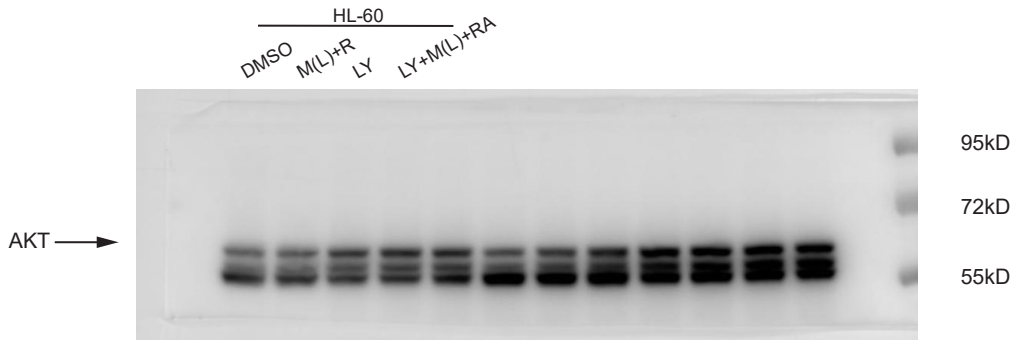
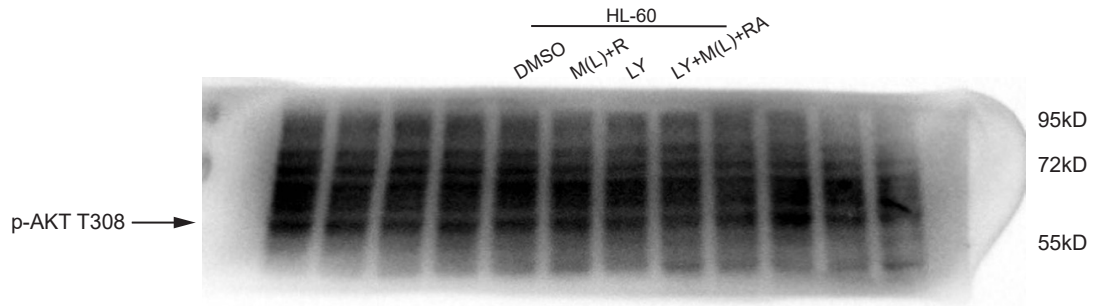
5A



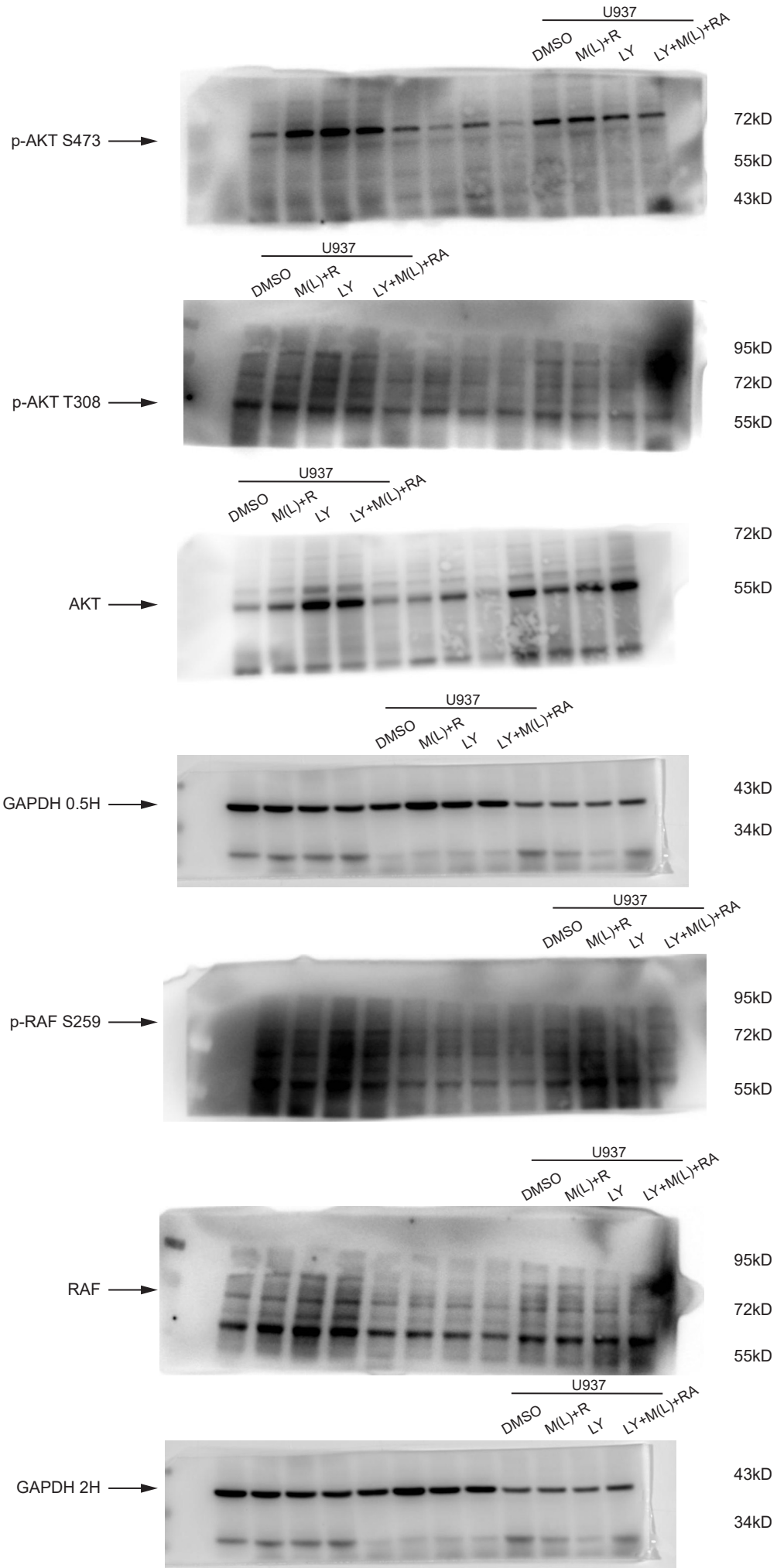
5E



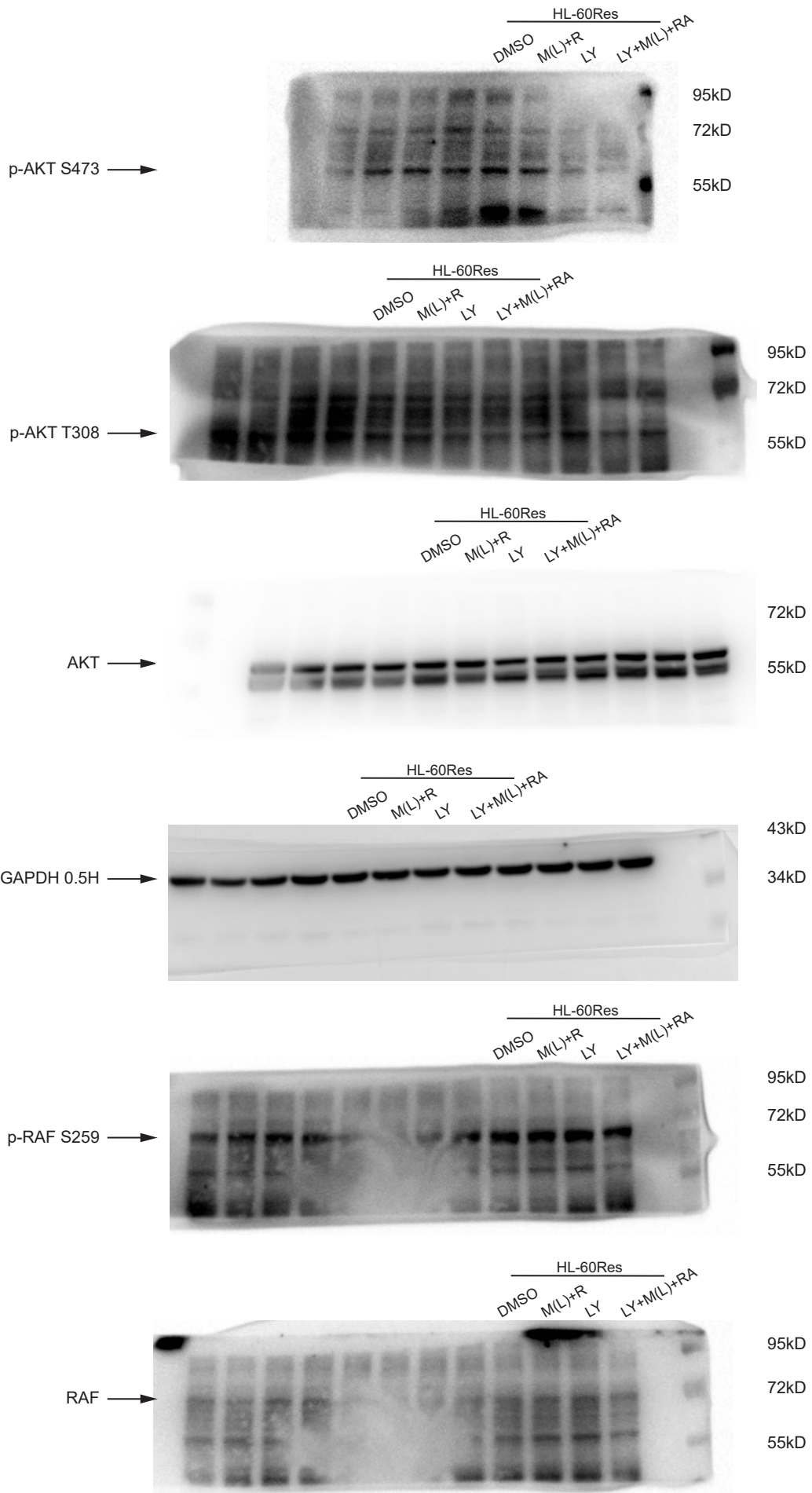
5E



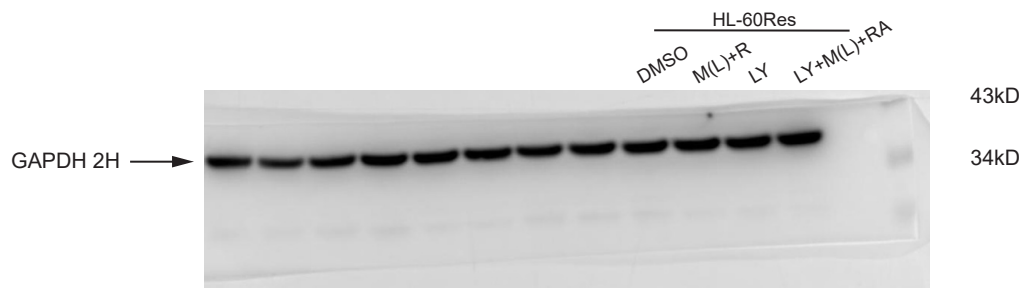
5E



5E



5E



Supplemental Figure 3.

Most membranes were cut prior to hybridization. Original blots of the immunoblot detection shown in Fig 2A-Fig 2B, Fig 3D, Fig 4A-Fig 4C, Fig 5A and Fig 5E.