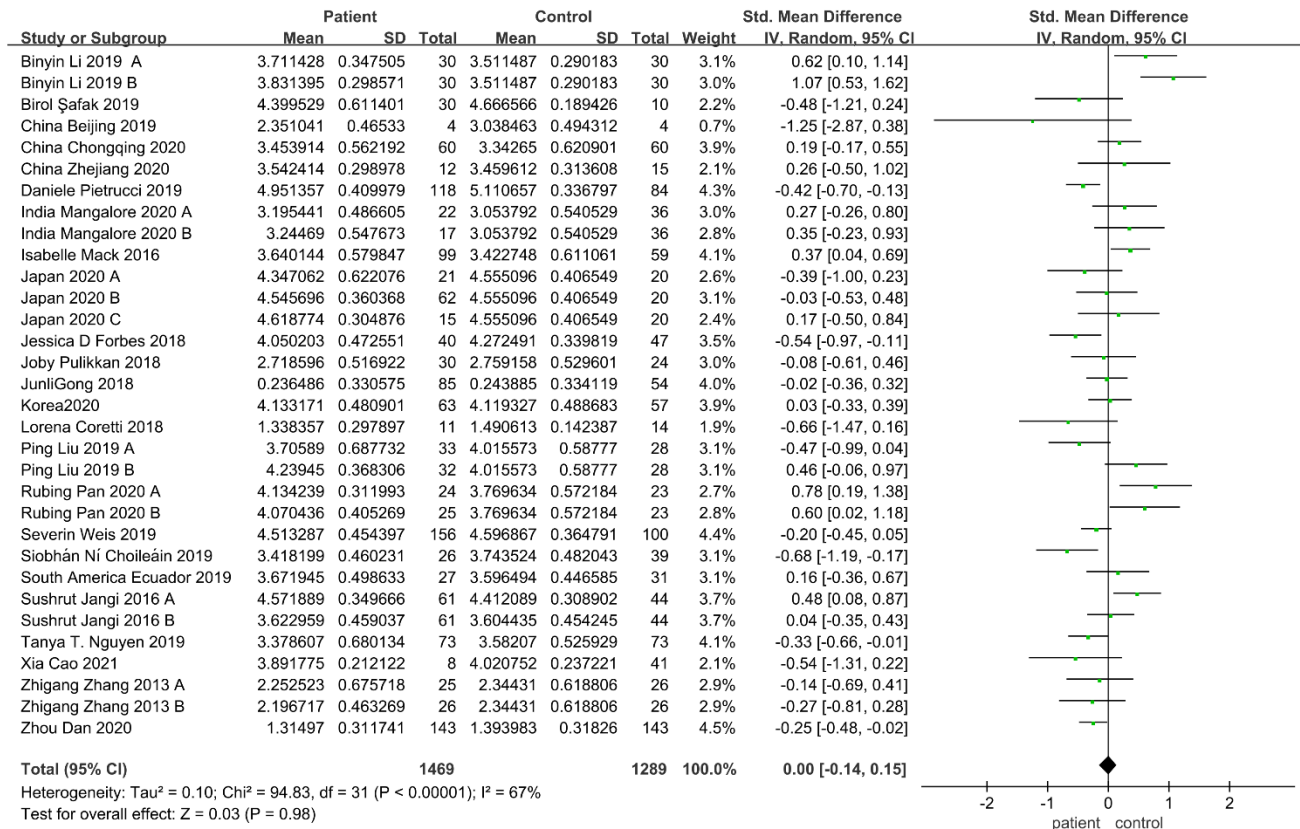
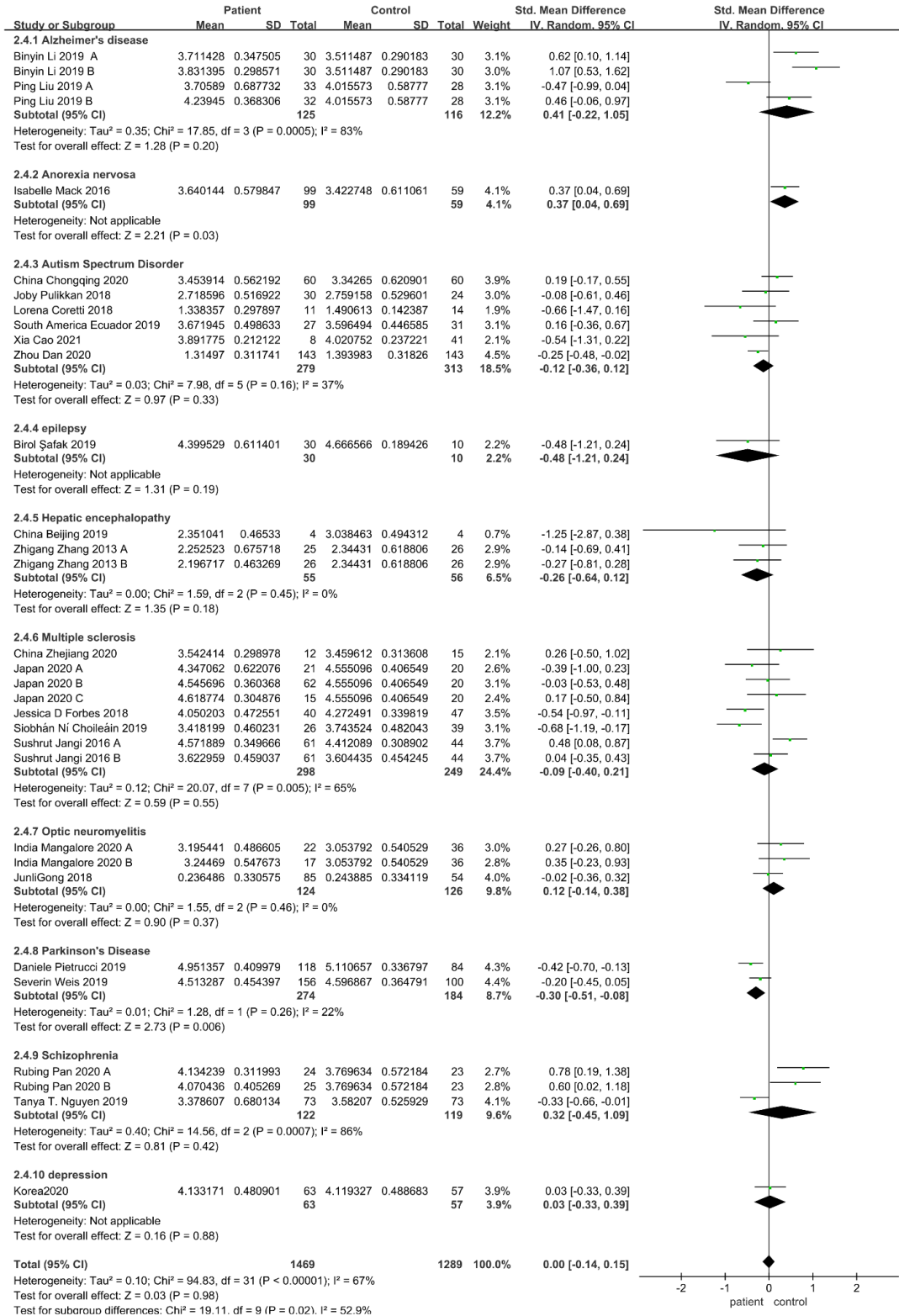


Supplementary Material

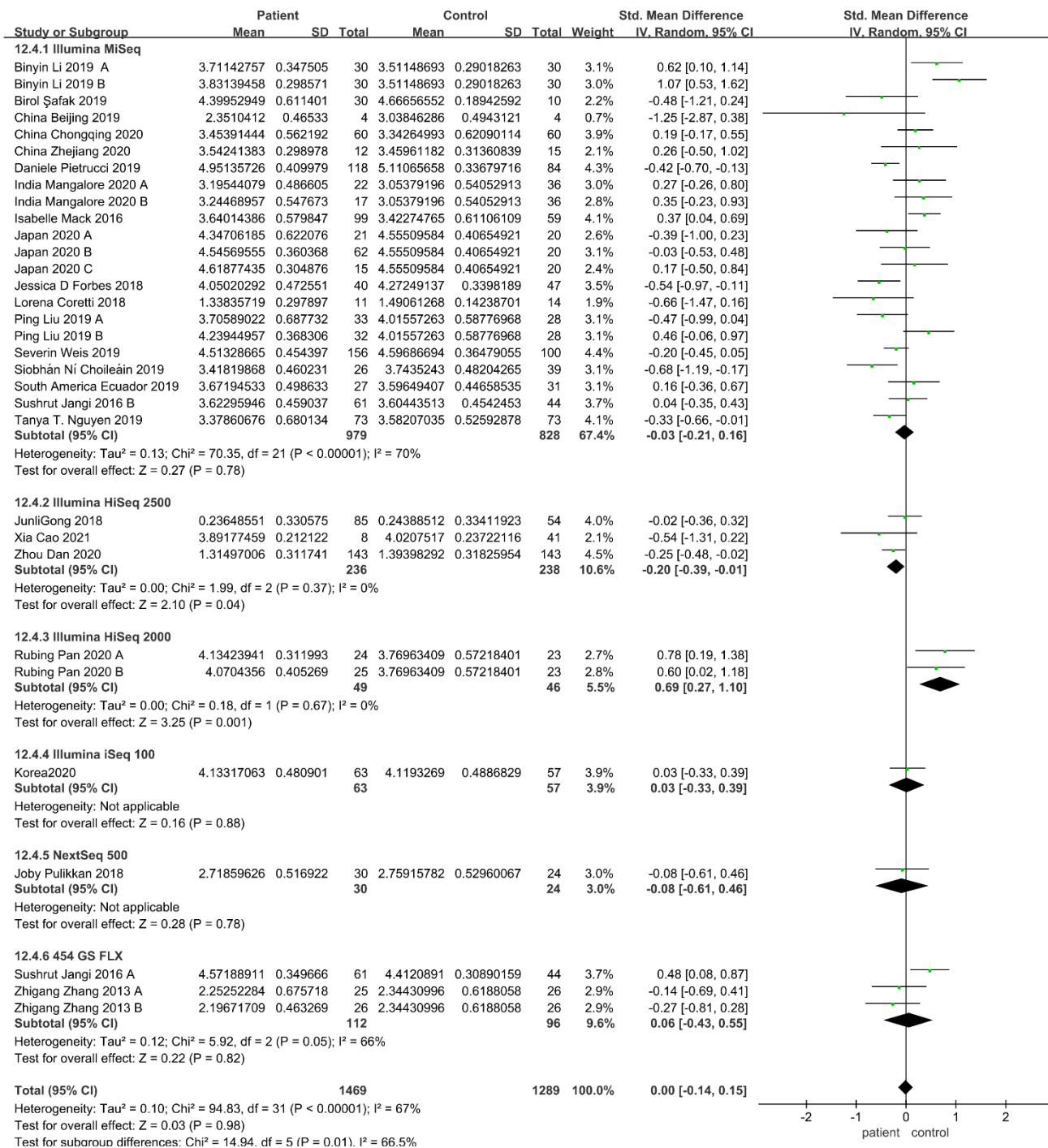
2 Supplementary Figures



Supplementary Figure 1. Forest plots of alpha diversity in the gut microbiome of patients with neurological diseases compared with healthy controls. Abbreviations: SMD, standardized mean difference; SD, standard deviation.

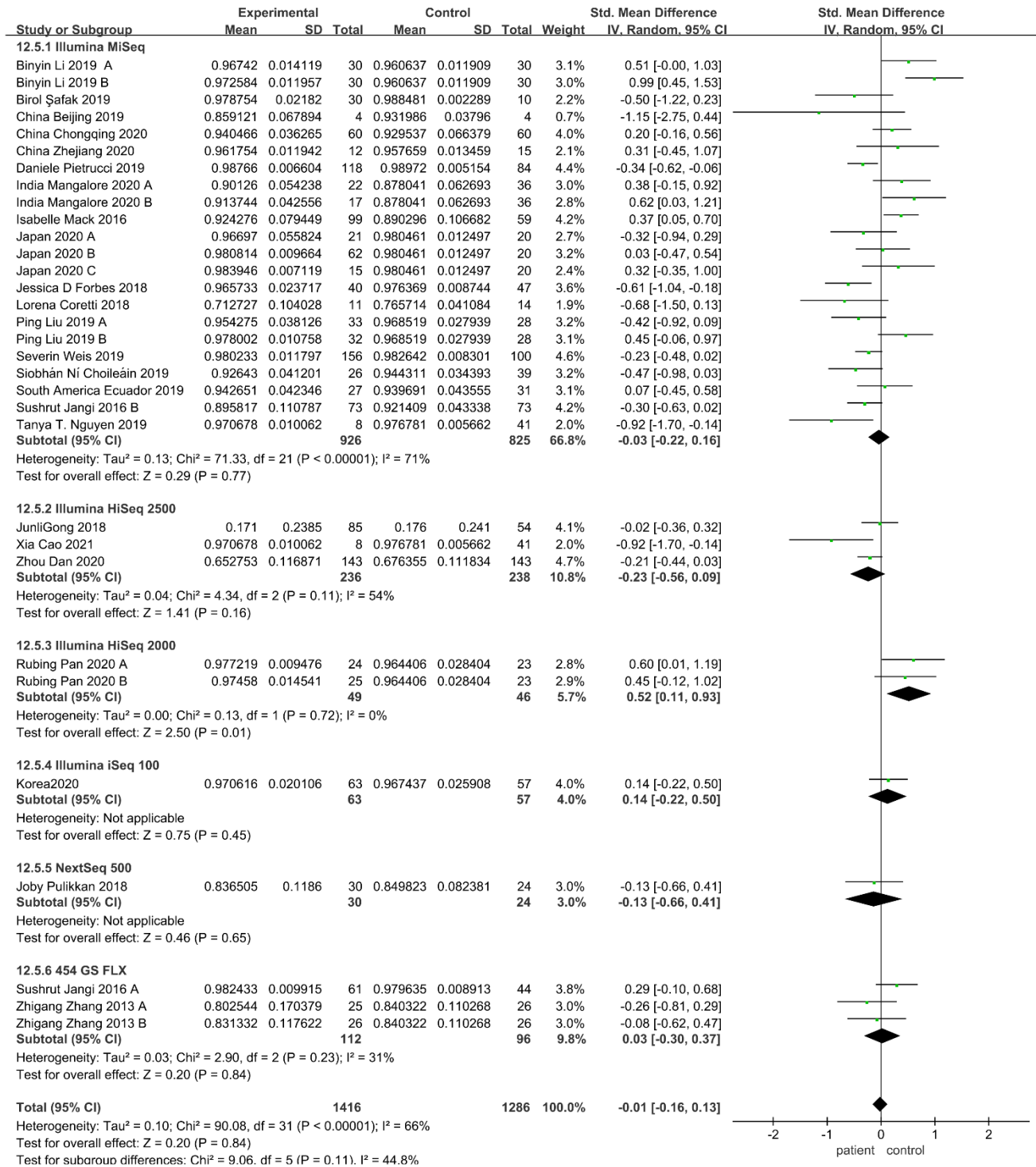


Supplementary Figure 2. Forest plot of the Shannon for the diseases. Abbreviations: SMD, standardized mean difference; SD, standard deviation.

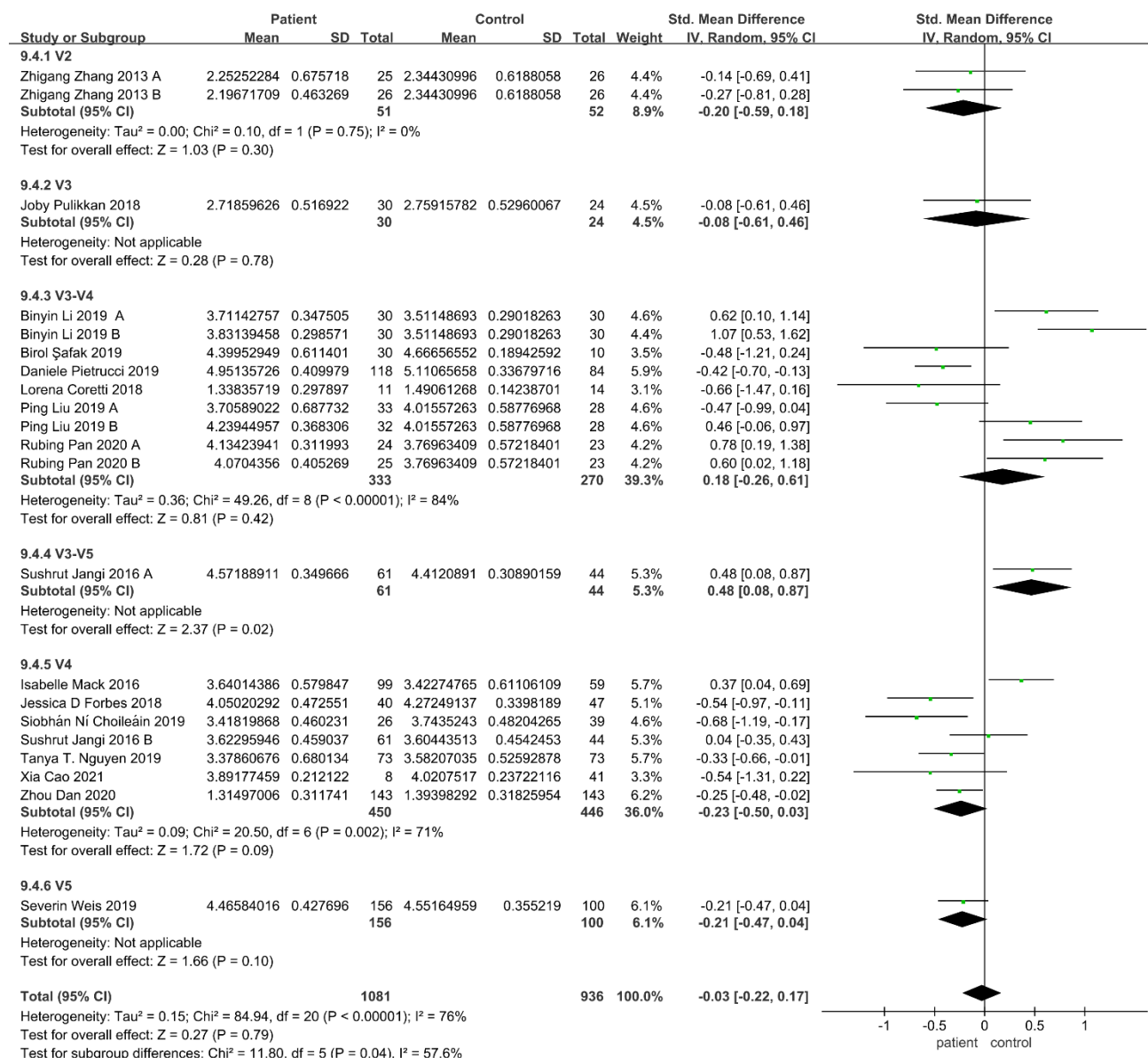


Supplementary Figure 3. Forest plot of the Shannon for the sequencing instrument.

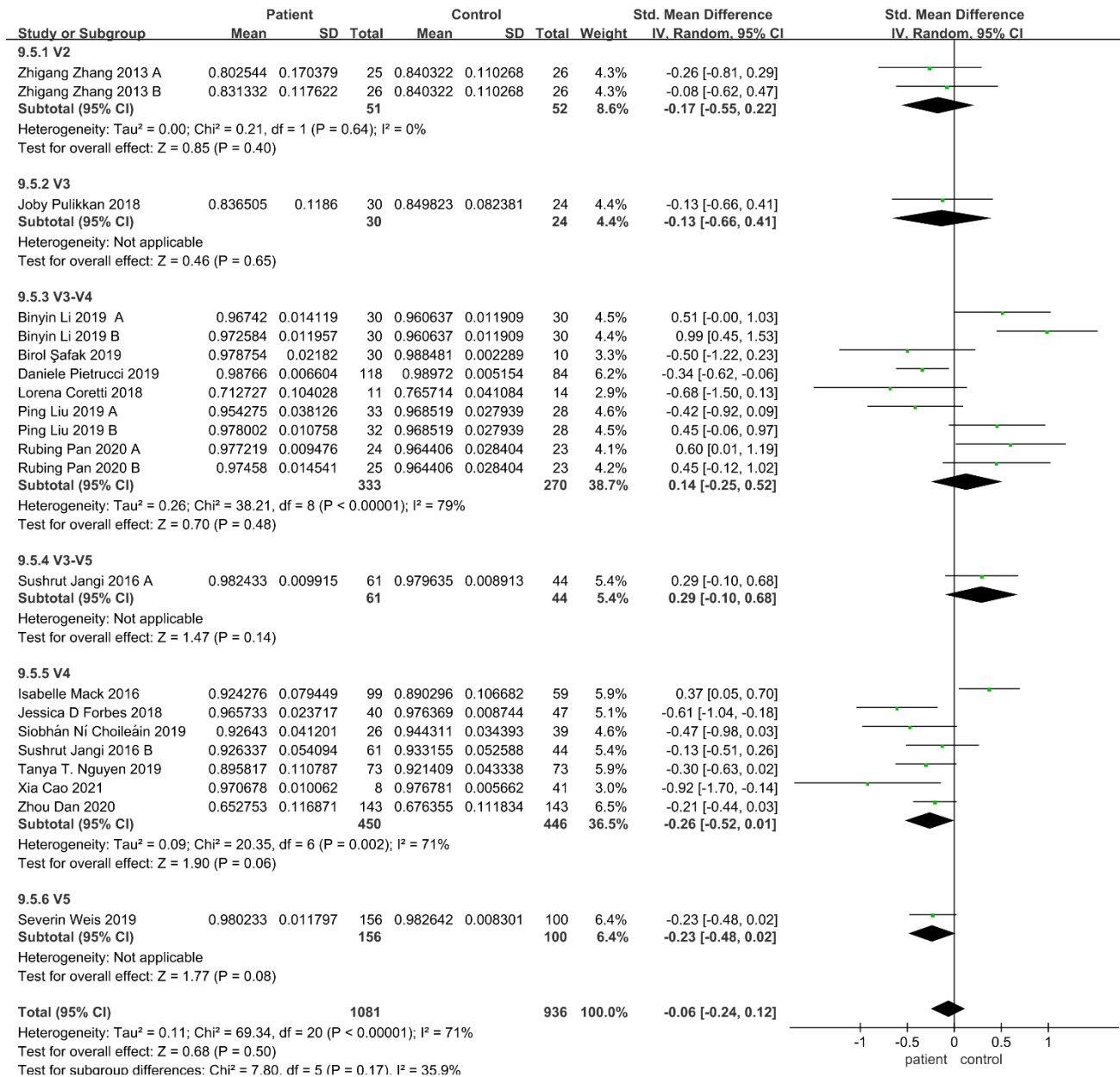
Abbreviations: SMD, standardized mean difference; SD, standard deviation.



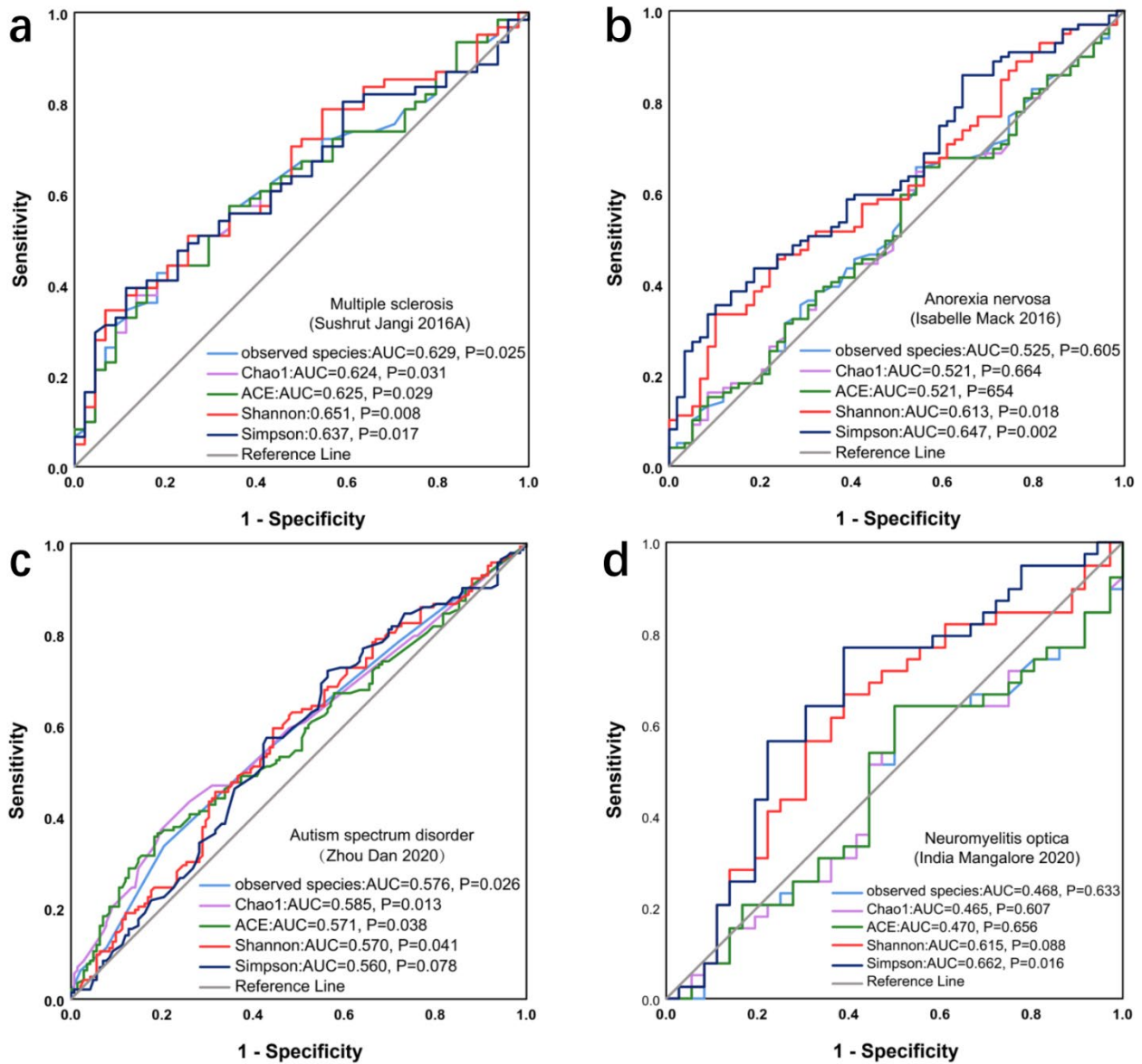
Supplementary Figure 4. Forest plot of the Simpson for the sequencing instrument.
Abbreviations: SMD, standardized mean difference; SD, standard deviation.



Supplementary Figure 5. Forest plot of the Shannon for the sequencing region. Abbreviations: SMD, standardized mean difference; SD, standard deviation.



Supplementary Figure 6. Forest plot of the Simpson for the sequencing region. Abbreviations: SMD, standardized mean difference; SD, standard deviation.



Supplementary Figure 7. ROC curve analysis on neurological diseases. ROC curve for Multiple sclerosis (a), Anorexia nervosa (b), Autism spectrum disorder (c) and Neuromyelitis optica (d). Abbreviations: ROC, receiver operating characteristic; AUC, area under the curve.