

## SUPPLEMENT 1

**Table S1.** Frequency of people who reported any health problem in last 90 days, adults  $\geq 18$  years in EPH 1999 to 2018

EPH cycle	Full adult sample	Sample restricted to those who reported a health problem		
		n	% <sup>1</sup> (unweighted)	Weighted % <sup>1</sup> (CI <sub>95%</sub> )
1999	12,805	4,531	35.4	34.7 (33.1; 36.3)
2000-01	20,481	7,730	37.7	35.2 (33.4; 37.2)
2003	24,012	7,188	29.9	29.8 (28.7; 30.9)
2004	19,516	6,367	32.6	32.7 (31.5; 33.9)
2005	11,174	3,845	34.4	34.9 (33.3; 36.5)
2006	13,115	2,866	21.8	20.6 (19.2; 22.1)
2007	12,135	2,527	20.8	19.2 (18.1; 20.4)
2008	11,369	3,228	28.4	26.9 (25.7; 28.2)
2009	11,097	3,484	31.4	32.4 (30.9; 34.3)
2010	12,427	4,354	35.0	36.8 (35.1; 38.6)
2012	13,262	5,008	37.8	36.3 (34.8; 37.8)
2013	13,601	4,448	32.7	32.4 (30.7; 34.2)
2014	13,163	3,131	23.8	22.8 (21.6; 24.0)
2015	20,315	6,003	29.5	28.6 (27.3; 29.9)
2016	24,580	9,096	37.0	34.6 (33.5; 35.8)
2017	23,101	9,936	43.0	40.0 (38.8; 41.2)
2018	12,255	4,765	38.9	37.0 (35.7; 38.4)
Average percentage across cycles				31.4

<sup>1</sup>As percentage of full EPH adult sample

Table S2. Distribution of healthcare utilization<sup>1</sup> by income groups, EPH 1999 to 2018

Cycle	Sample size	PIR<1		≥1 PIR <2		≥2 PIR <3		≥3 PIR <5		PIR≥5	
		n	% (CI <sub>95%</sub> )	n	% (CI <sub>95%</sub> )	n	% (CI <sub>95%</sub> )	n	% (CI <sub>95%</sub> )	n	% (CI <sub>95%</sub> )
EPH 1999	4,492	615	40.9 (37.3,44.7)	646	46.7 (42.7,50.7)	354	53.4 (48.3,58.5)	331	63.0 (56.5,69.1)	297	69.8 (63.4,75.6)
EIH 2000-1	7,665	970	41.1 (36.9,45.3)	1,150	49.0 (44.9,53.2)	679	57.6 (52.6,62.3)	584	63.2 (57.5,68.6)	483	70.5 (64.6,75.7)
EPH 2003	7,142	1,210	43.5 (40.9,46.3)	1,207	54.1 (51.1,57.0)	538	59.3 (54.7,63.7)	438	60.3 (55.1,65.3)	342	72.3 (66.9,77.1)
EPH 2004	6,344	1,043	44.4 (41.5,47.4)	1,028	50.7 (47.4,53.8)	491	52.6 (47.6,57.6)	434	61.0 (55.0,66.6)	240	65.6 (59.0,71.7)
EPH 2005	3,795	602	49.1 (44.6,53.6)	677	56.9 (53.4,60.4)	335	62.3 (56.5,67.7)	280	68.7 (63.2,73.7)	217	78.2 (71.2,83.9)
EPH 2006	2,847	611	52.9 (48.1,57.8)	567	61.6 (56.6,66.4)	292	71.4 (64.7,77.3)	166	69.0 (57.9,78.2)	112	77.0 (65.5,85.6)
EPH 2007	2,522	593	64.1 (59.5,68.4)	642	76.1 (72.2,79.7)	237	80.0 (73.8,85.1)	180	85.0 (78.2,90.0)	131	85.4 (76.1,91.5)
EPH 2008	3,211	645	60.5 (56.0,64.8)	731	69.2 (65.1,73.0)	358	78.8 (73.1,83.6)	310	80.8 (75.5,85.2)	190	78.3 (71.5,83.9)
EPH 2009	3,470	712	58.4 (54.2,62.5)	808	69.7 (65.6,73.4)	378	75.2 (69.4,80.2)	328	79.7 (74.5,84.0)	186	75.1 (66.9,81.8)
EPH 2010	4,326	911	66.3 (62.4,69.9)	948	67.9 (64.4,71.1)	545	73.2 (68.8,77.2)	387	73.6 (67.0,79.2)	199	72.3 (64.1,79.2)
EPH 2012	4,991	791	61.0 (57.0,64.9)	1,087	67.8 (64.3,71.0)	579	65.0 (60.2,69.5)	459	67.7 (62.4,72.5)	365	80.8 (76.1,84.7)
EPH 2013	4,438	643	66.4 (62.1,70.4)	1,079	69.4 (65.6,72.9)	576	75.0 (67.2,81.5)	485	74.6 (69.0,79.4)	356	80.5 (73.7,85.9)
EPH 2014	3,122	490	77.4 (72.9,81.4)	811	77.6 (73.9,80.9)	493	78.7 (73.9,82.9)	349	81.7 (76.2,86.2)	258	81.3 (76.0,85.7)
EPH 2015	5,993	977	76.9 (73.2,80.3)	1,498	77.0 (73.2,80.3)	943	82.3 (78.3,85.8)	800	78.7 (72.4,83.9)	548	79.8 (74.1,84.5)
EPH 2016	9,078	1,873	68.8 (66.1,71.4)	2,180	69.2 (66.4,71.9)	1,131	73.6 (69.9,77.0)	760	72.1 (67.9,76.0)	523	72.9 (66.7,78.2)
EPH 2017	9,915	1,640	62.0 [59.1,64.7]	2,517	67.3 [64.9,69.6]	1,137	66.1 [62.7,69.3]	849	62.2 [57.2,66.9]	498	73.5 [68.2,78.1]
EPH 2018	4,752	782	65.8 [61.7,69.8]	1,144	64.8 [61.8,67.8]	604	65.9 [61.4,70.1]	410	69.6 [64.5,74.3]	296	71.8 [65.6,77.2]

<sup>1</sup> Consultation or hospitalization in those who reported a health problem in last 90 days.

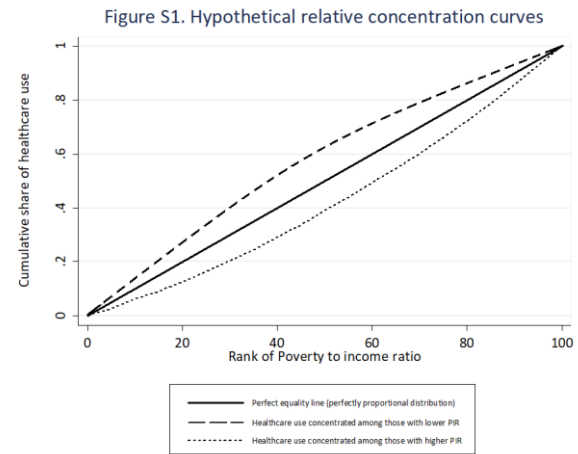


Figure S2. Trends of income-related inequality in health care use, by area  
EPH 1999 to 2018

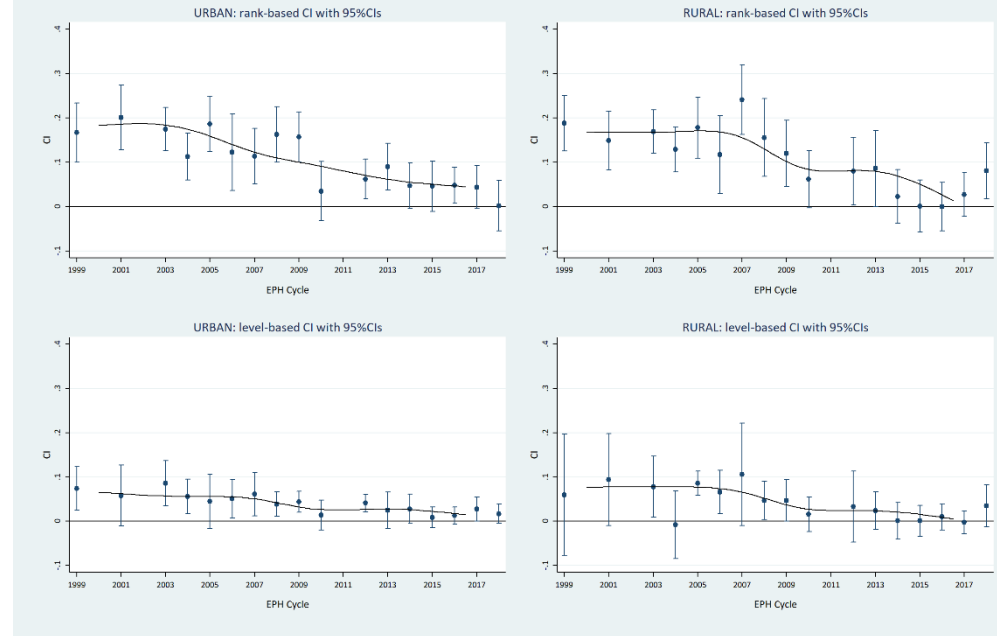


Figure S3. Trends of income-related inequality in health care use, by sex  
EPH 1999 to 2018

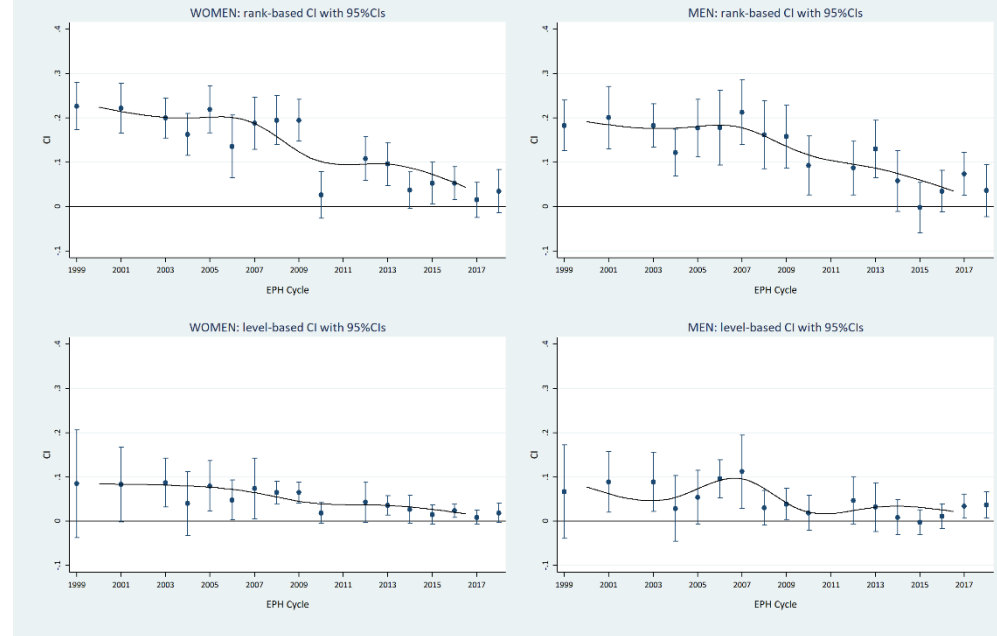


Figure S4. Trends of income-related inequality in health care use, ages 65+  
EPH 1999 to 2018

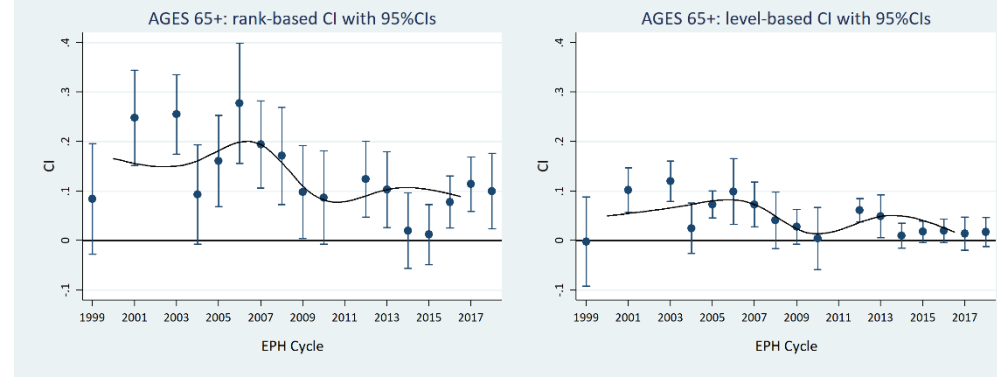


Figure S5. Trends of income-related inequality in health care use - alternative CIs  
EPH 1999 to 2018

