

CT-M8 mice: a new mouse model demonstrates that basophils have a non-redundant role in lupus-like disease development

SUPPLEMENTARY MATERIAL

Authors: John TCHEN ^{1,2}, Quentin SIMON ^{1,2}, Léa CHAPART ^{1,2}, Christophe PELLEFIGUES ^{1,2}, Hajime KARASUYAMA ³, Kensuke MIYAKE ³, Ulrich BLANK ^{1,2}, Marc BENHAMOU ^{1,2}, Eric DAUGAS ^{1,2,4}, Nicolas CHARLES ^{1,2}

Affiliations:

1- Université Paris Cité, Centre de Recherche sur l'Inflammation, INSERM UMR1149, CNRS EMR8252, Faculté de Médecine site Bichat, Paris, France

2- Université Paris Cité, Laboratoire d'Excellence INFLAMEX, Paris, France

3- Department of Immune Regulation, Graduate School of Medical and Dental Sciences, Tokyo Medical and Dental University (TMDU), Tokyo, Japan

4- Service de Néphrologie, Hôpital Bichat, Assistance Publique – Hôpitaux de Paris, Paris, France

***Correspondence to:**

Nicolas Charles, PhD

Centre de Recherche sur l'Inflammation, INSERM UMR1149, CNRS ERL8252,

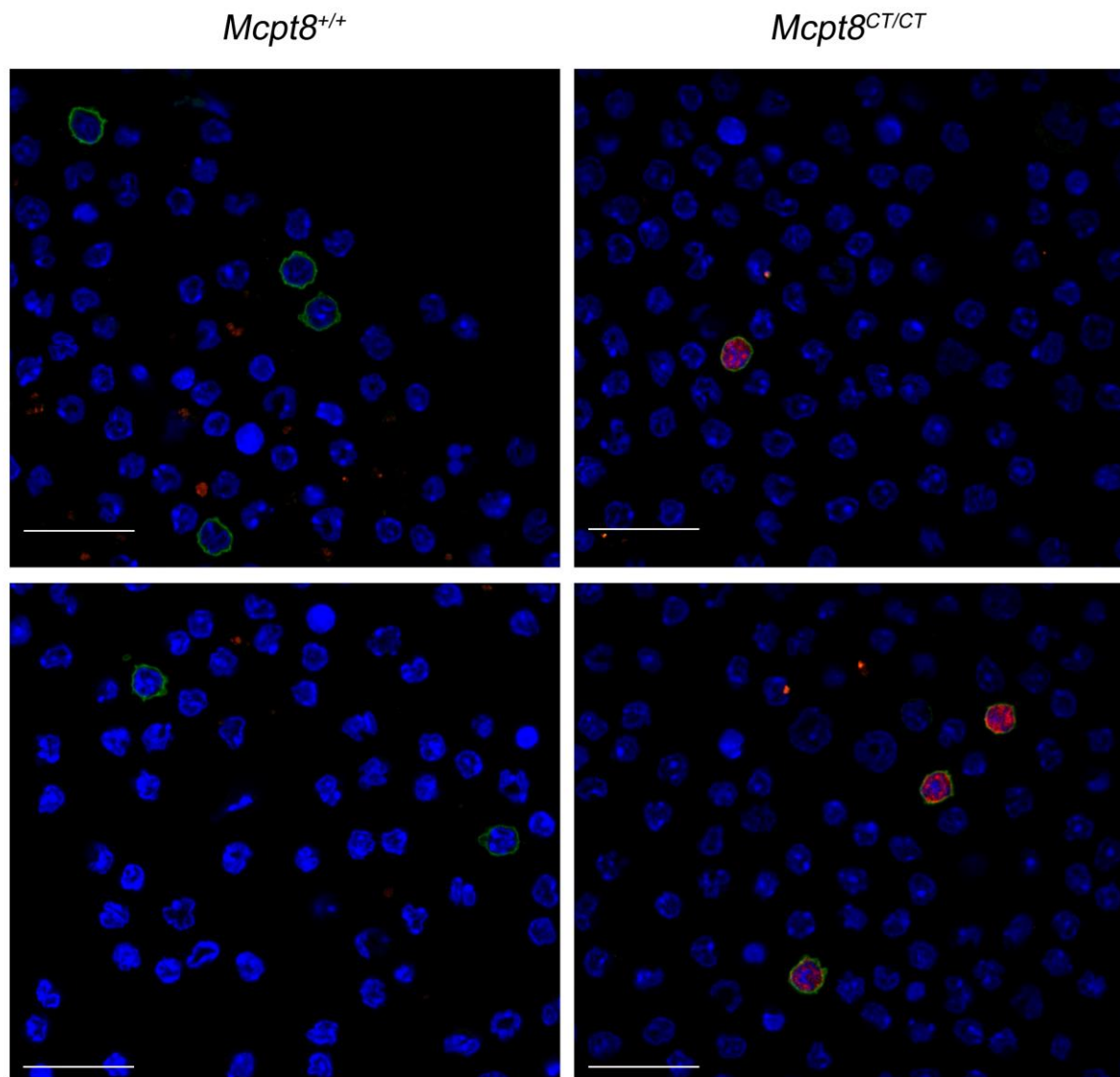
Université Paris Cité, Faculté de Médecine site Bichat,

16 rue Henri Huchard, 75018 Paris, France.

Phone: +33 157277306

E-mail: nicolas.charles@inserm.fr

Supplementary Figure S1 :



Supplementary Figure S1: tdTomato expression in basophils from CT-M8 mice

Basophil-specific tdTomato expression (red) imaged by confocal microscopy on basophil-enriched splenocytes from *Mcpt8^{+/+}* (left) and *Mcpt8^{CT/CT}* (right) mice stained with anti-IgE antibody (green) and DNA staining (DAPI, blue) (see **methods**). Scale bar = 20 μ m. The upper panels correspond to the uncropped images from **Figure 1C**. The lower panels are from another independent experiment.