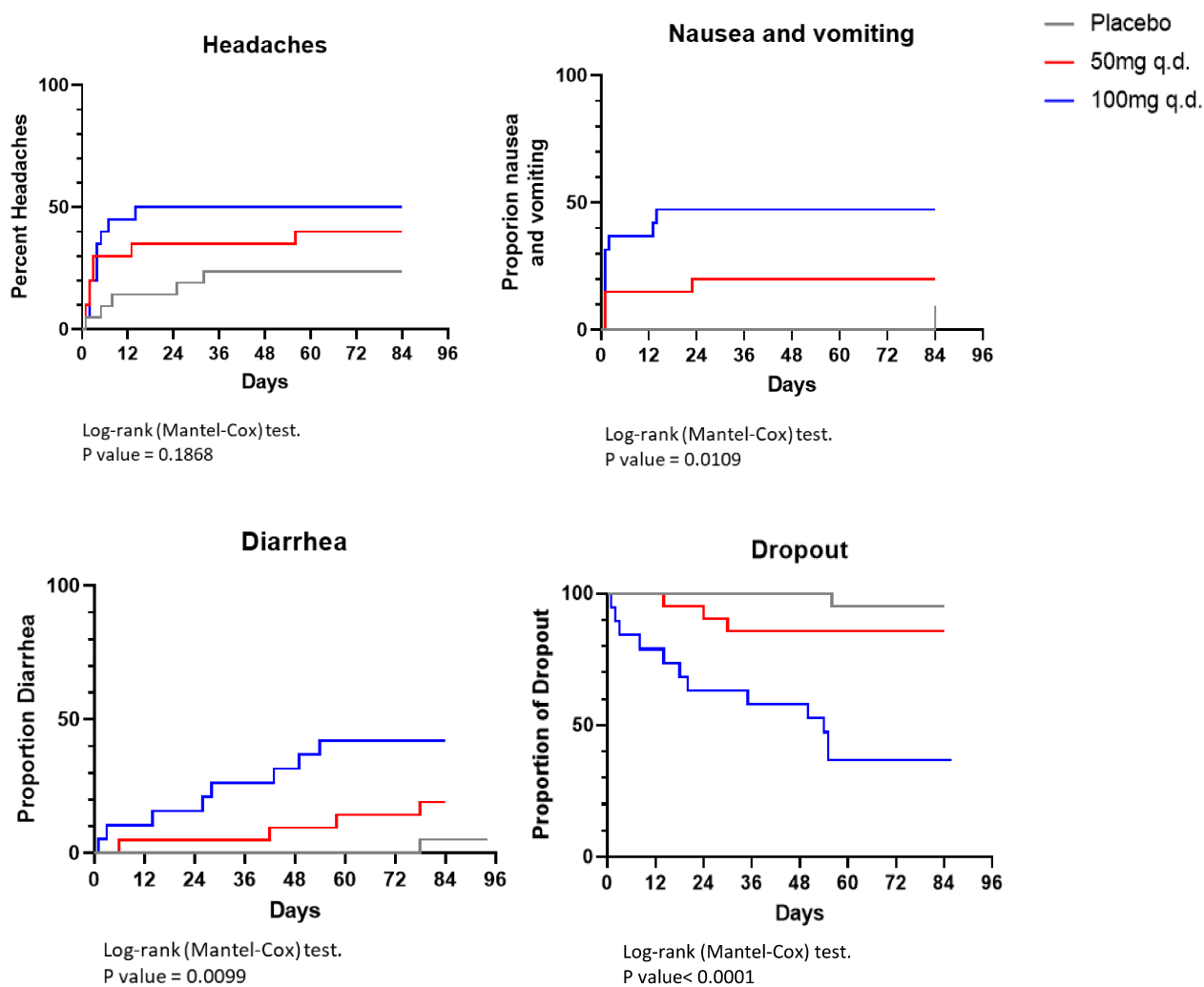


Supplementary figure 1: Occurrence of main AEs (headaches, nausea and vomiting, diarrhea) and dropout onset times for RA patients who received placebo or ABX464 (50 or 100 mg) once daily.



The mean delay for headaches occurrence was 2.0 days for ABX464 100 mg and 0.25 days for ABX464 50 mg ; for nausea/vomiting, it was 3.2 and 5.7 days for ABX464 100 mg and 50 mg, respectively ; for diarrhea it was 30.7 and 46.2 days for ABX464 100 mg and 50 mg, respectively. Most dropouts in the 100 mg group took place rapidly in the first 2 weeks of treatment.