

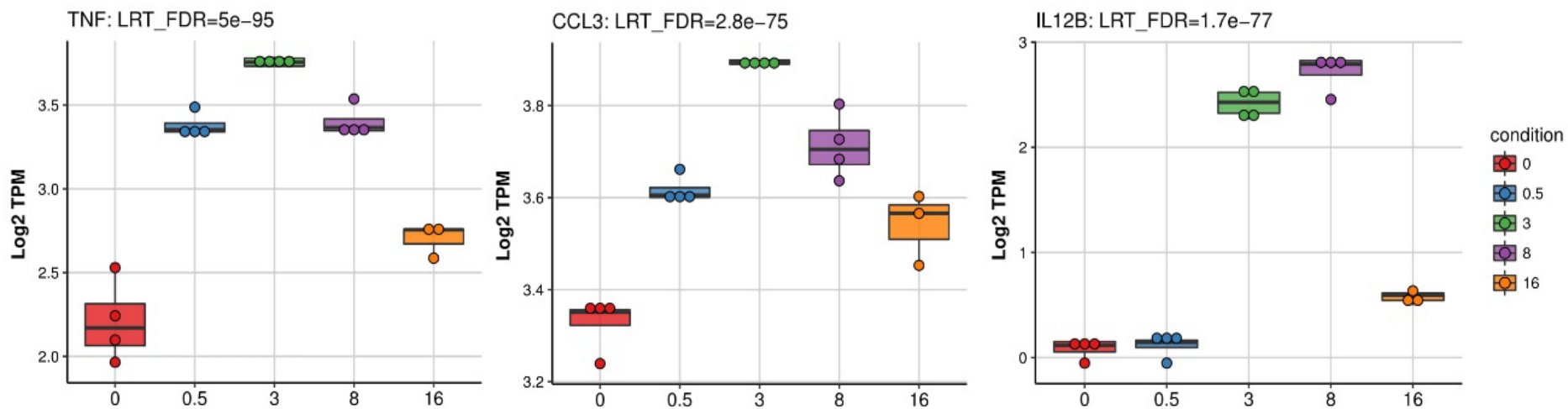
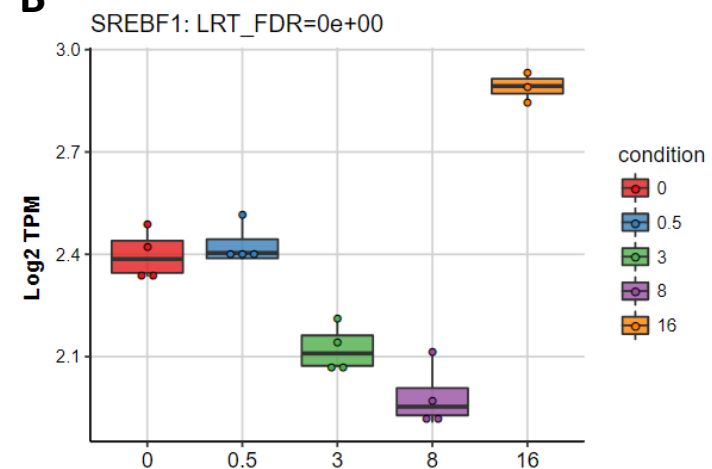
A**B**

Figure S1. RNA-seq profile (Log₂ TPM) of **(A)** *TNF*, *IL12B* and *CCL3* shows a peak at 3h post-LPS stimulation in hMDMs. **(B)** *SREBF1* (encoding *SREBP1*) show a biphasic regulation with distinct pro-inflammatory (3h) and resolution (16h) mRNA expression profiles. At least n=3 biological replicates per time point; TPM, transcript per million; FDR, false discovery rate.

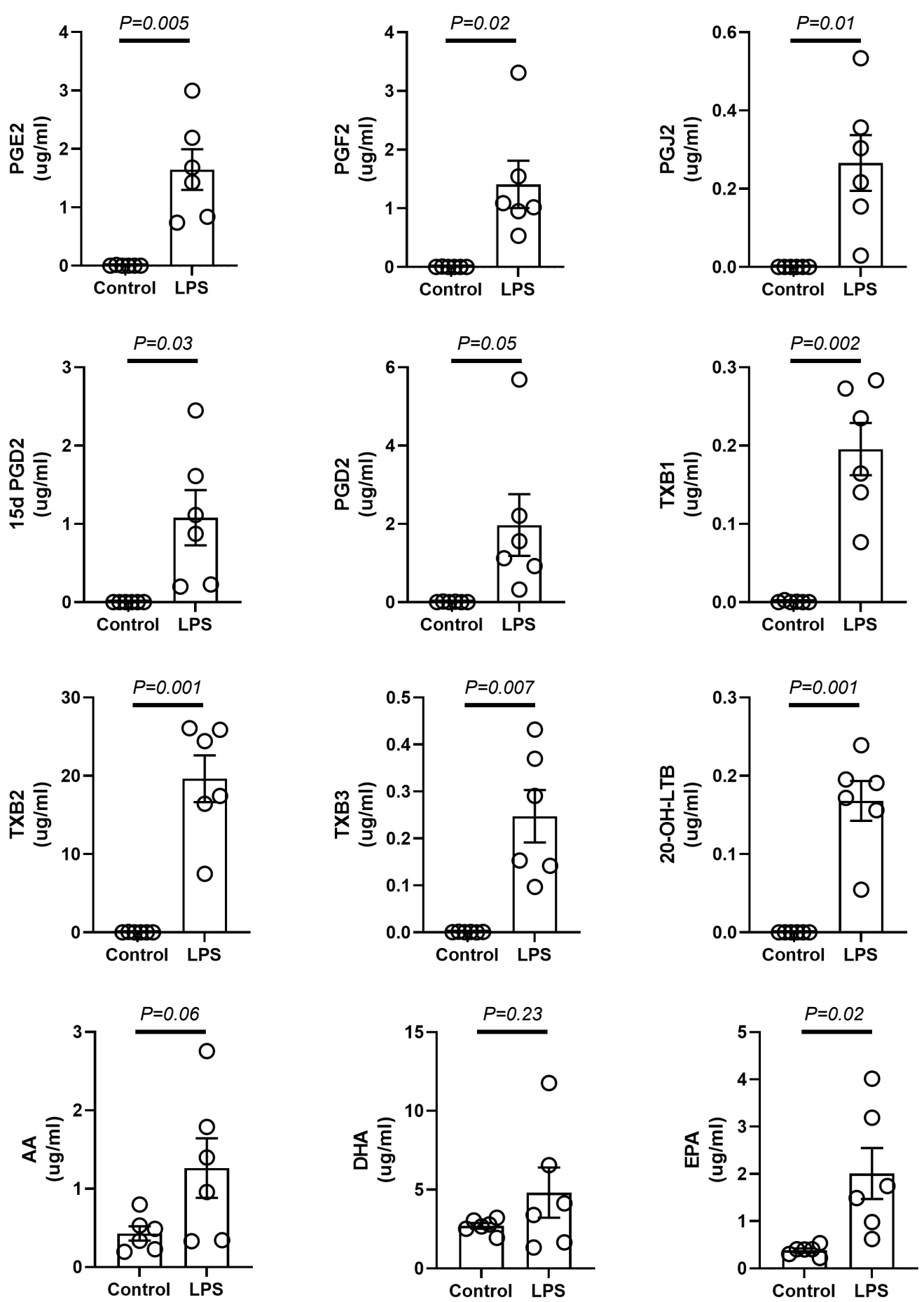
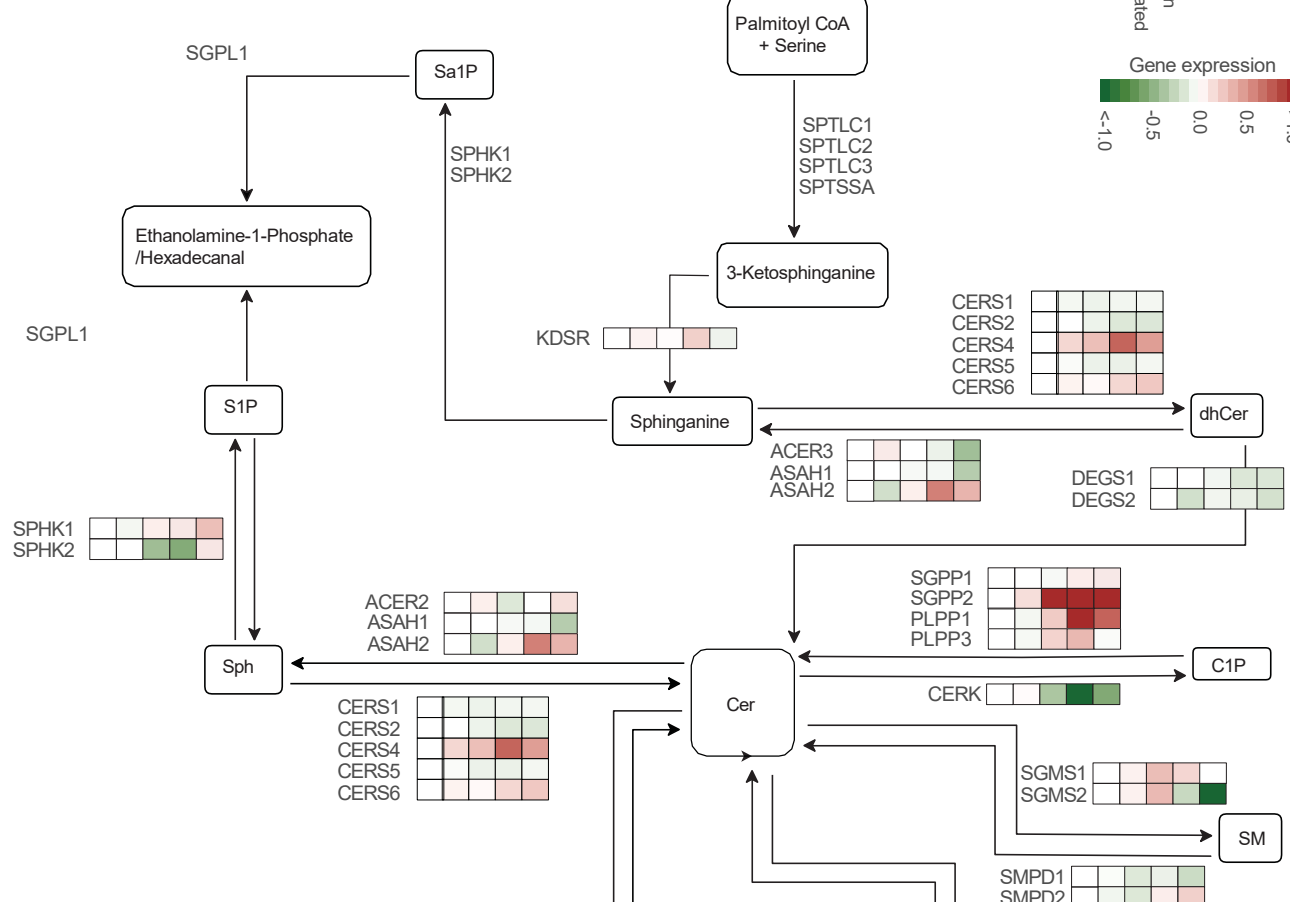


Figure S2. Eicosanoids and AA, DHA and EPA levels measured in the media of control (basal) and 16-stimulated hMDMs. N=6 donors per condition; significance tested by paired t-test.

Spingolipid metabolism



Glycosphingolipid metabolism

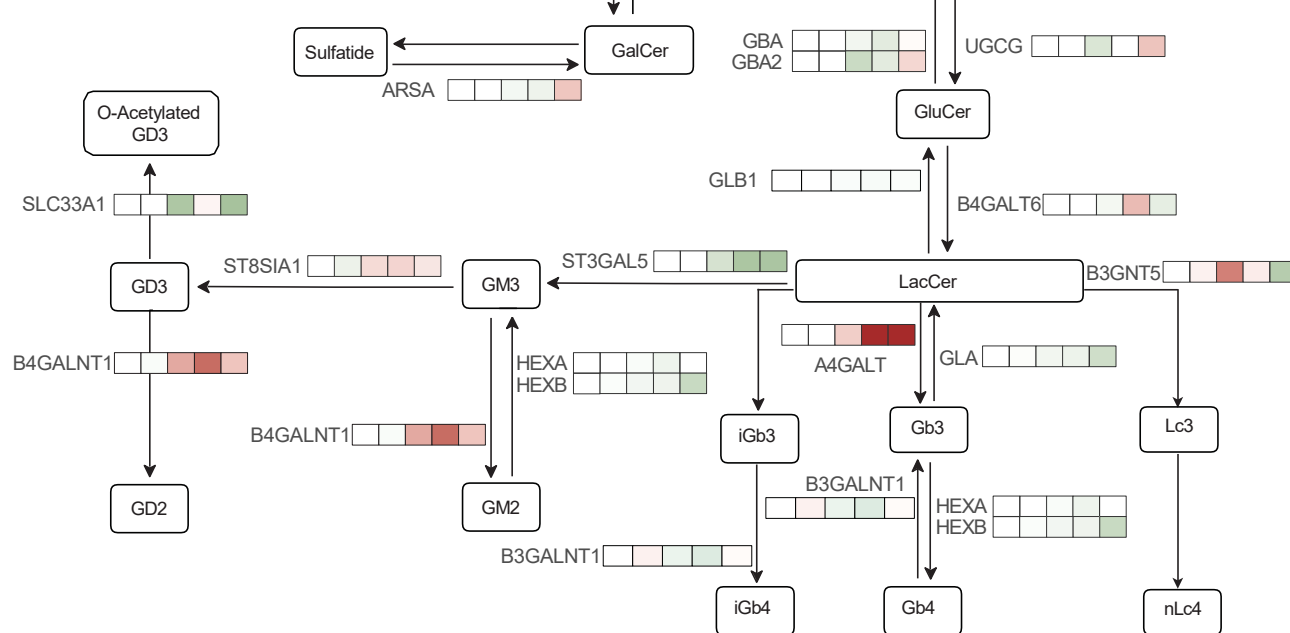


Figure S3. The LPS kinetics of expression of the enzymes in the sphingolipid and glycosphingolipid pathways in human macrophages. All known enzymes of the pathway and their five time-dependent relative expression (untreated, 30 min, 3h, 8h and 16h) are shown.