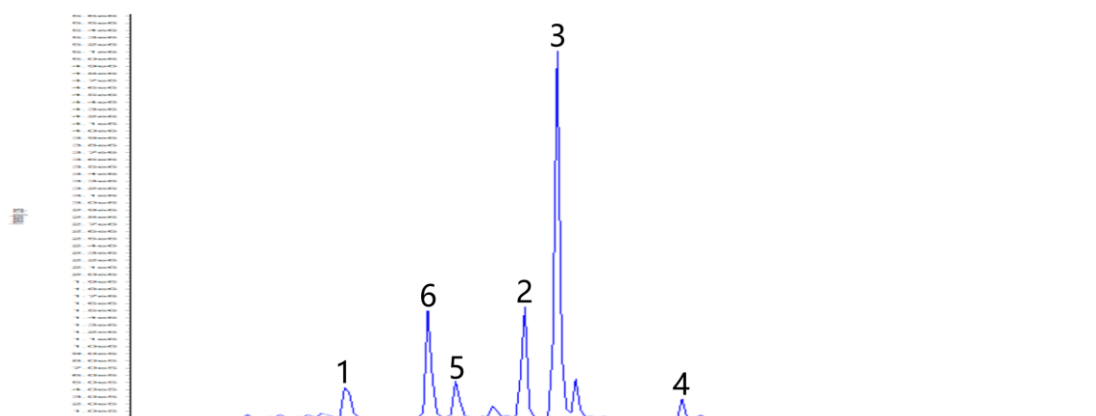
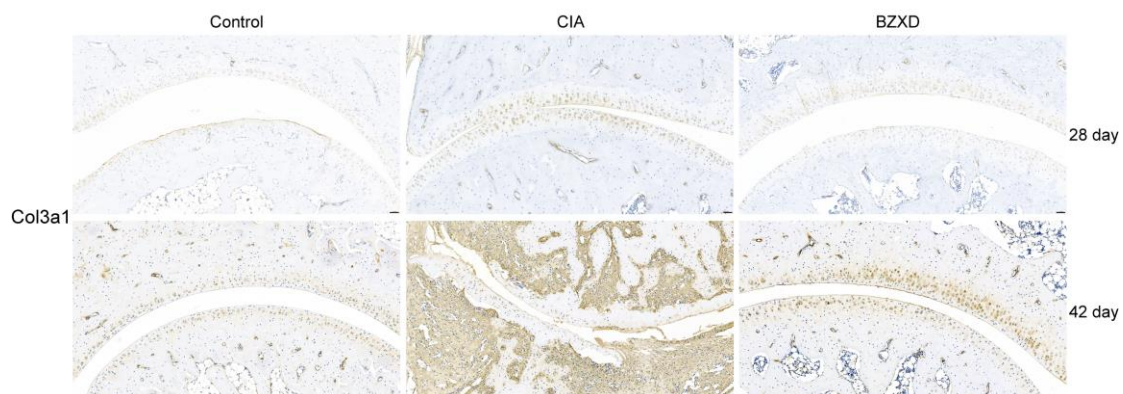


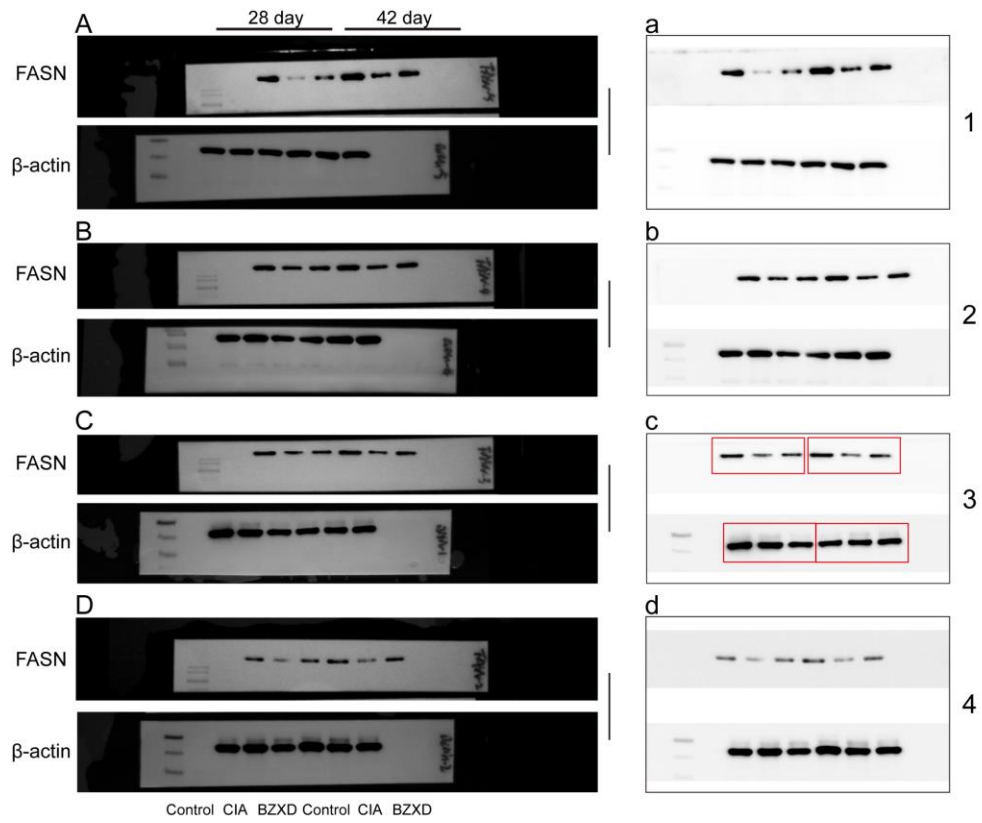
Supplementary Figures



Supplementary Figure S1 | UPLC-MS/MS analysis of BZXD components. UPLC-MS/MS TIC chromatograms of six major components (1: Paeoniflorin, 2: Rosmarinic acid, 3: Salvianolic acid B, 4: Glycyrrhizic acid, 5: Ferulic acid, 6: p-Coumaric acid) were detected in BZXD in the negative ESI mode.



Supplementary Figure S2 | Representative images of immunoreactivities (20X) in the ankle joint of rats; scale bar represents 50 μ m.



Supplementary Figure S3 | (A-D) Original image of all blots with visible edges in **Fig. 7**. The figures **a-d** were cutting blots. The red box represented the original blot area used in **Figure 7**.