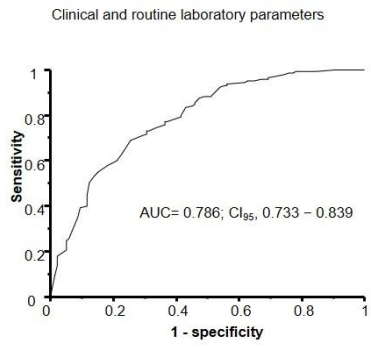
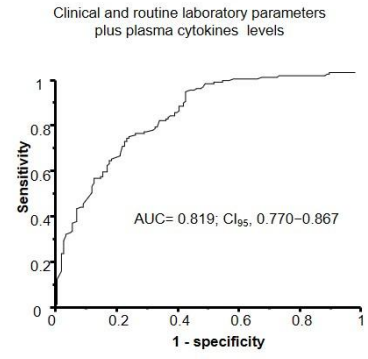


A

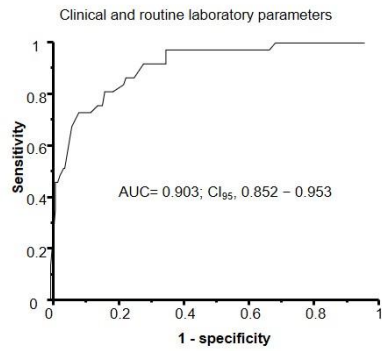


Sensitivity (CI ₉₅)	Specificity (CI ₉₅)	PPV (CI ₉₅)	NPV (CI ₉₅)
68.5% (63.9-73.0)	74.5% (70.2-78.7)	74.4% (70.1-78.6)	68.9% (64.3-73.4)

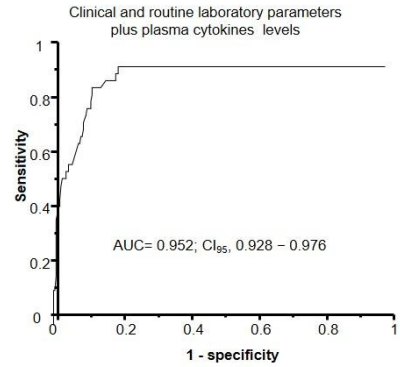


Sensitivity (CI ₉₅)	Specificity (CI ₉₅)	PPV (CI ₉₅)	NPV (CI ₉₅)
91.7% (88.9-94.4)	56.6% (51.7-61.4)	69.3% (64.7-73.8)	86.5% (83.1-89.8)

B



Sensitivity (CI ₉₅)	Specificity (CI ₉₅)	PPV (CI ₉₅)	NPV (CI ₉₅)
97.1% (95.4-98.7)	68.8% (64.3-73.3)	30.4% (25.8-34.9)	99.4% (98.6-100,1)



Sensitivity (CI ₉₅)	Specificity (CI ₉₅)	PPV (CI ₉₅)	NPV (CI ₉₅)
98.1% (96.7-99.4)	82.7% (78.9-86.4)	51.5% (46.6-56.3)	99.6% (98.9-100.2)