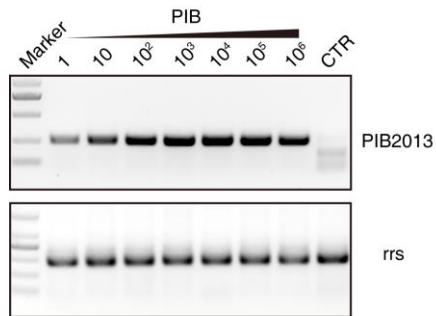


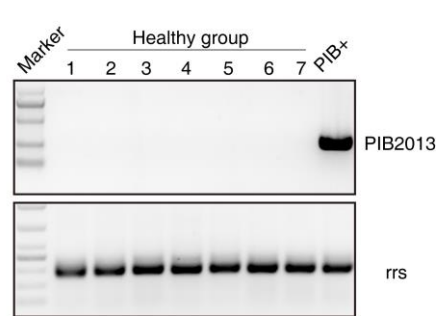
A

```
GCAAAATATAACATCTGCCCGAACGTTGATTTTATGGCGACACAACCTAACTACCGGGCGCATTAAACG
CACTATCTGTGTCATCCGGAGAGCTTTACTTACAAACTGCCCCACAATATGGACACGATGGAAGGGGC
GCTGGTGGAGCCTGCCGCAGTCGGGATGCATGCCGCGATGCTGGCAGATGTTAAACCGGGTAAGAAGA
TAATTATTCTGGGAGCGGGTTGATTGGTTTGATGACGTTGCAAGC
```

B



C



Supplemental Figure 1. PIB2013 specifically detected PIB presence from stool.

Different amount of PIB bacteria were mixed with stool from a healthy adult (CTR) and the resultant bacterial mixtures were subjected to PIB2013 assay. (A) The target sequence of PIB genome for PIB2013 assay. (B) A typical PCR assay for PIB-containing samples (PIB⁺). (C) A typical PCR assay for CTR samples. rrs was used as the internal control.