

Original western blots

In the additional files we have provided original unedited western blots images indicating the proteins we probed for. The highlighted sections, marked with red rectangles, in the original images indicate sections used to create final figures shown in this report. The calculations were based on each protein being normalized to its respective MAPK.

Figure 5

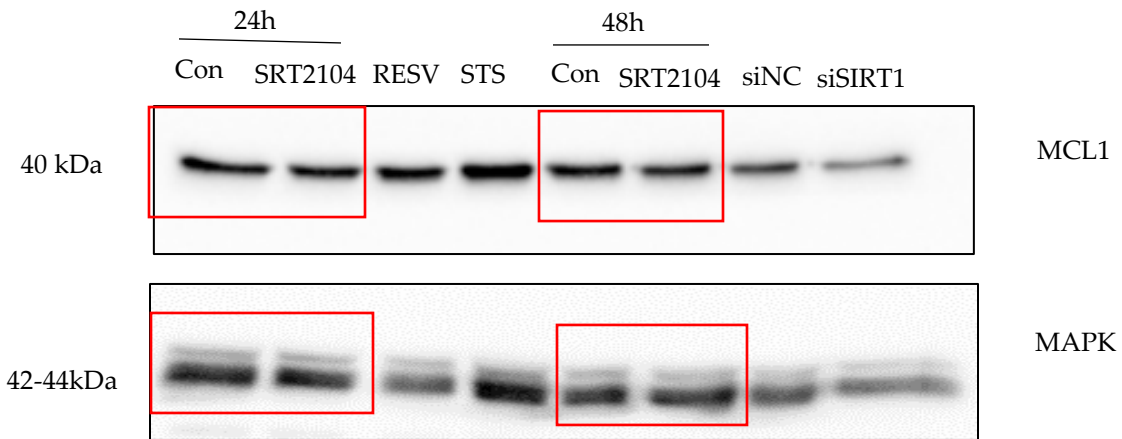
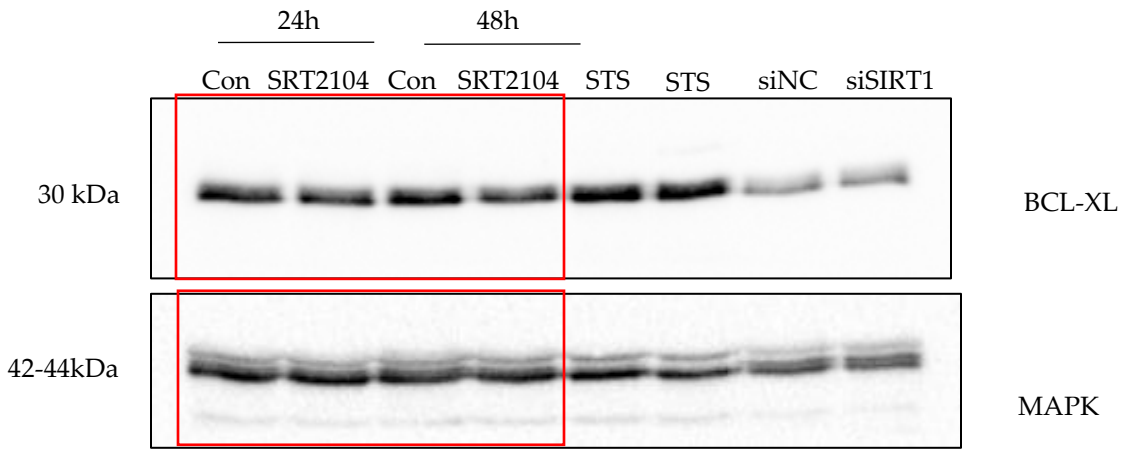


Figure 5C

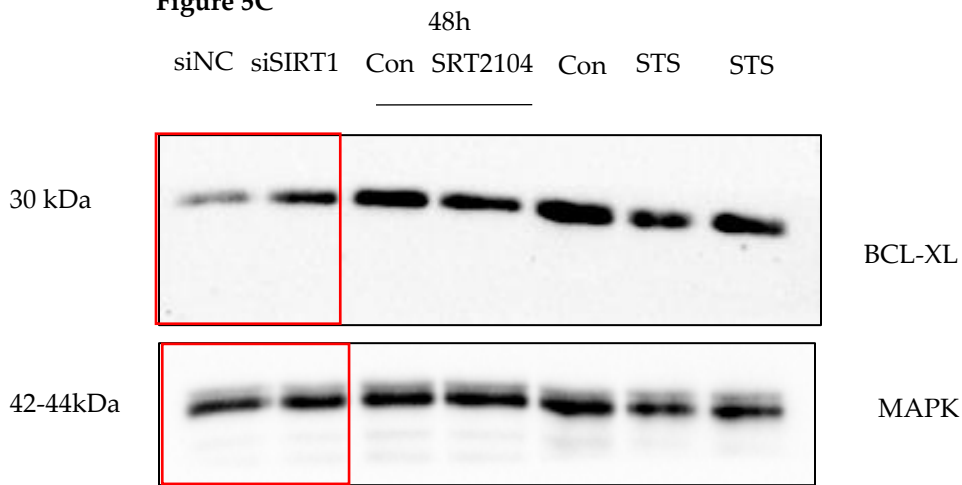


Figure 6E

In figure 6E, lane 3 was spliced out (since we do not show resveratrol here) and lanes 2 and 4 were joined in the final images shown in the report.

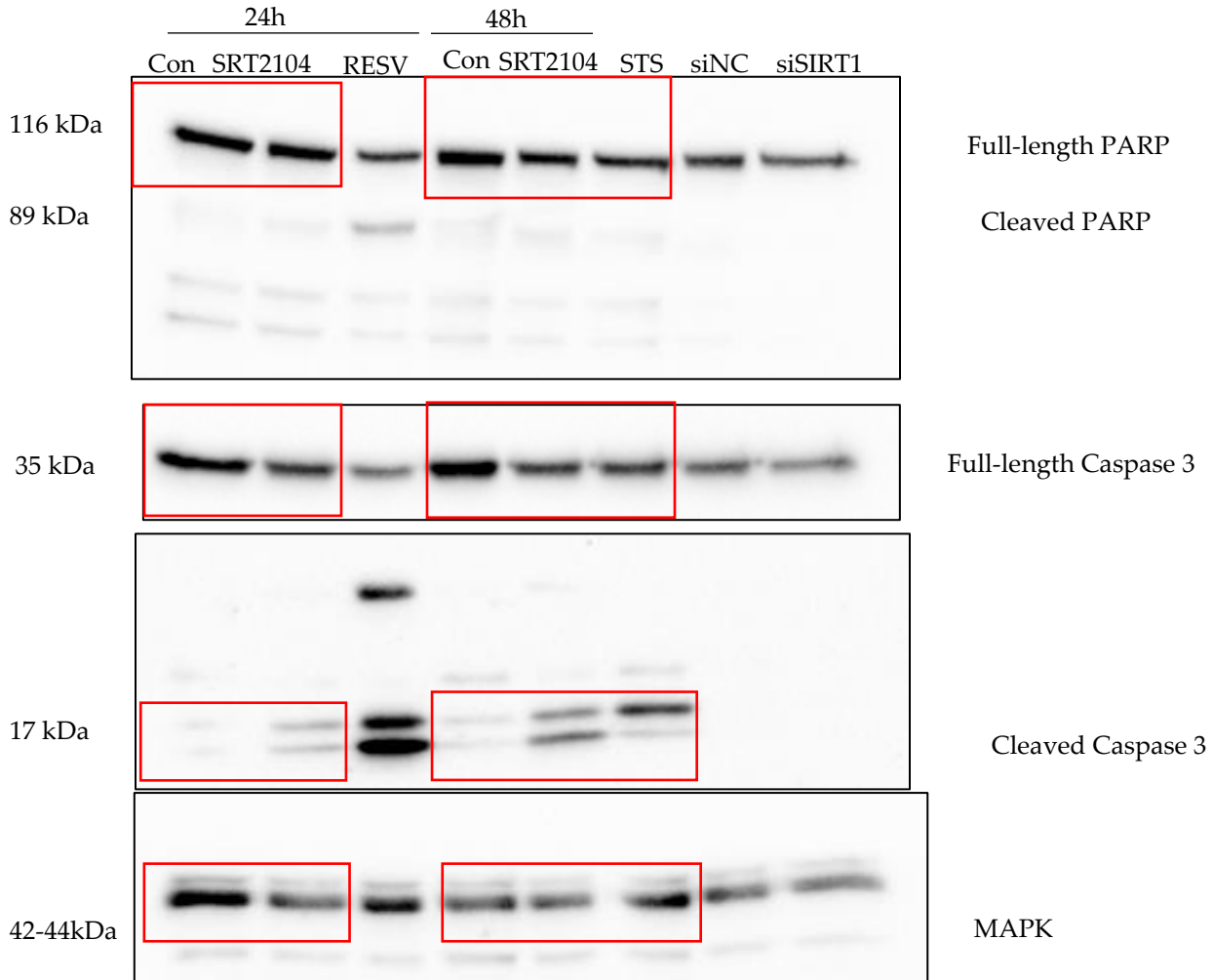


Figure 7

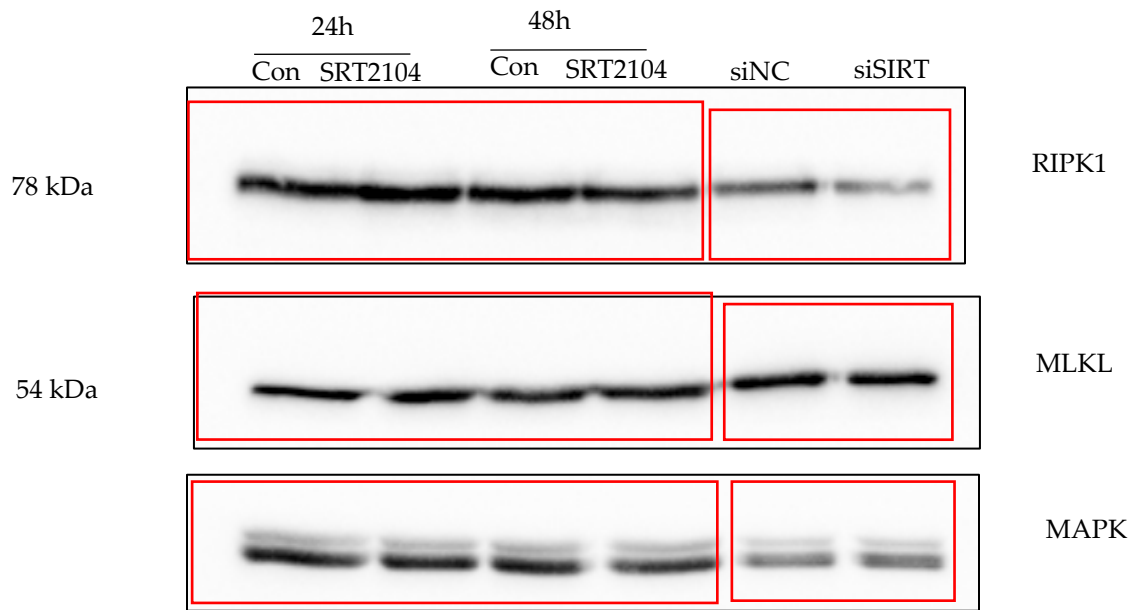


Figure 9

