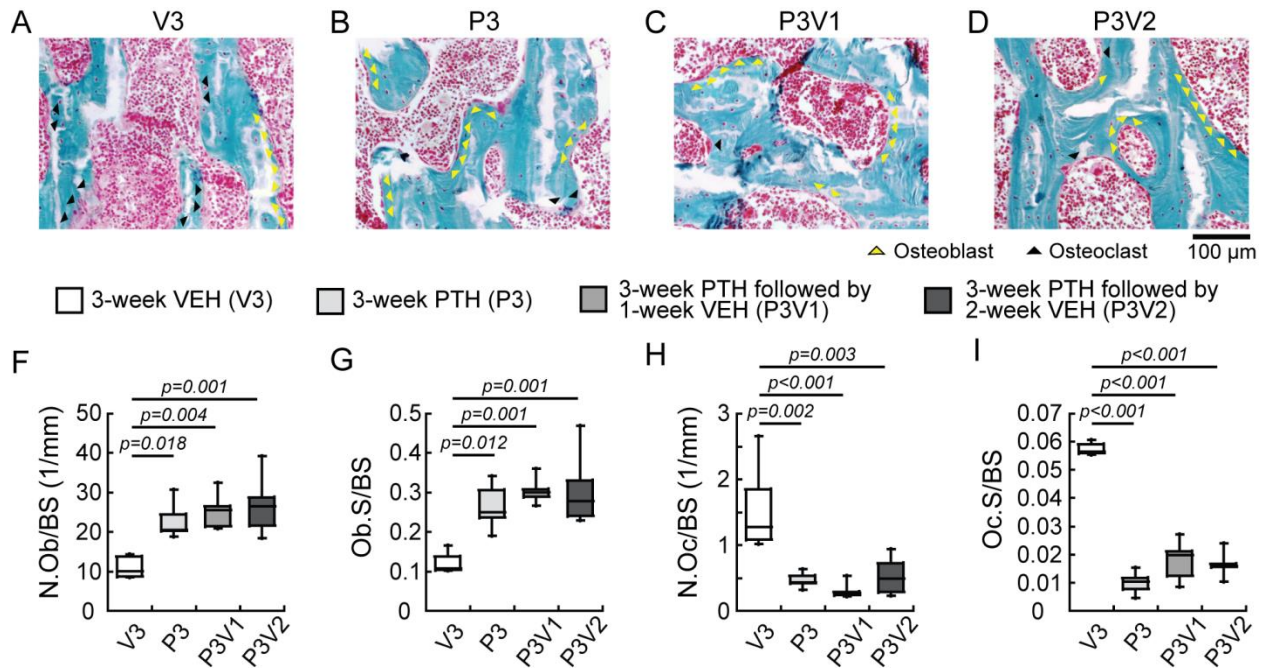


Supplemental Figure 1. Intact animals (A) Schematics of treatment strategies, (B-G) changes in tibial trabecular bone microstructure measurements in PTH-VEH and VEH groups (Mean \pm SD, n=6/group). # indicates significant difference between VEH and PTH-VEH groups (p<0.05).



Supplemental Figure 2. Intact animals (A-D) Osteoblasts (yellow arrows) and osteoclasts (black arrows) were shown in Goldner's Trichrome staining of trabecular bone sections in OVX rats with 3-week VEH (V3) and PTH (P3) treatments, and 3-week PTH treatment followed by 1 and 2 weeks withdrawal (P3V1 and P3V2). Histomorphometry-based measurements of (F) osteoblast number (N.Ob/BS), (G) osteoblast surface (Ob.S/BS), (H) osteoclast number (N.Oc/BS), (I) osteoclast surface (Oc.S/BS) were measured for V3, P3, P3V1, and P3V2 (n=5/group).