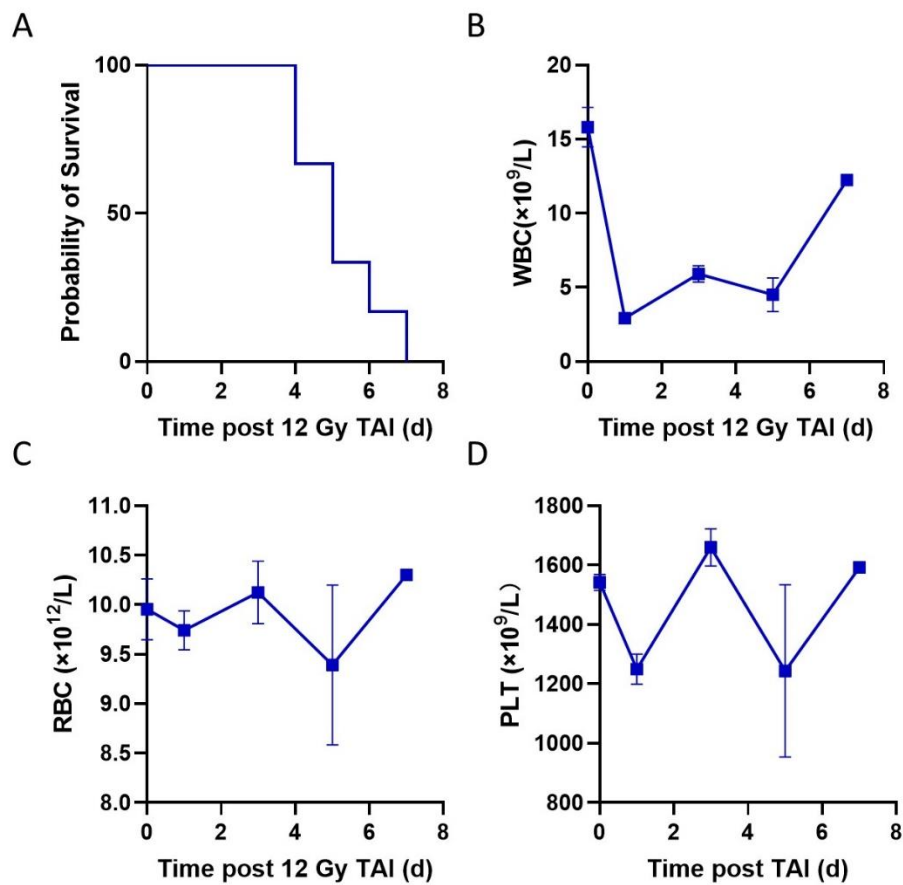


Supplemental Figure 1: Optimal drug dosage and timing of apigenin. (A) Mice were intraperitoneally (*i.p.*) administrated with different concentration of apigenin 12 h and 2 h prior to 10 Gy irradiation. (B) Mice were intraperitoneally (*i.p.*) administrated at different time points of apigenin prior to 10 Gy irradiation. Regenerated crypts per circumference were counted 3.5 d post irradiation (n = 4 mice in each group). Error bars indicate mean \pm SEM, ** $p < 0.01$, *** $p < 0.001$, **** $p < 0.0001$. Vehicle versus apigenin treatment, by unpaired, two-tailed Student's t-test.



Supplemental Figure 2

Supplemental Figure 2: Total abdominal irradiation (TAI) in mice dose not induce lethal hematopoietic syndrome. (A) Survival curves of mice after 12 Gy TAI. (B-D) white blood cell (WBC), red blood cell (RBC) and platelet (PLT) were analyzed after 12 Gy TAI. Values are mean \pm SEM; n = 6 mice per group.