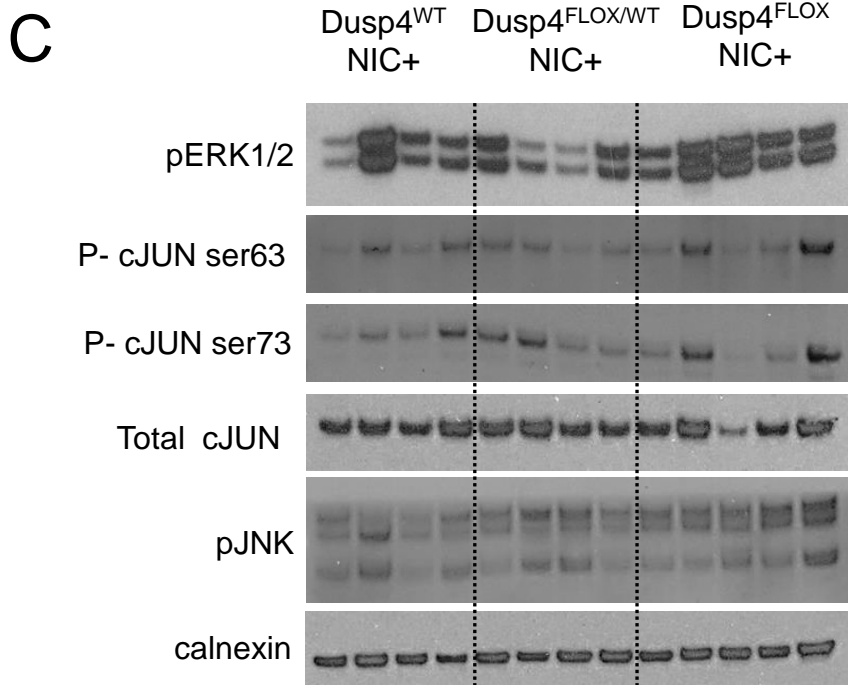
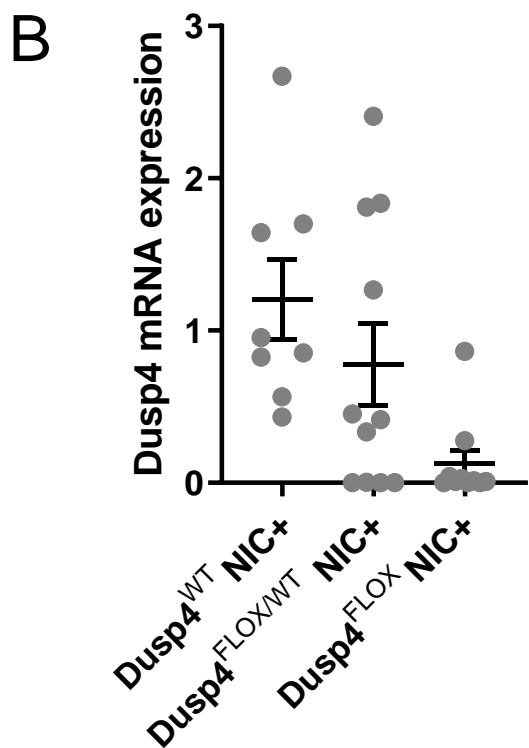
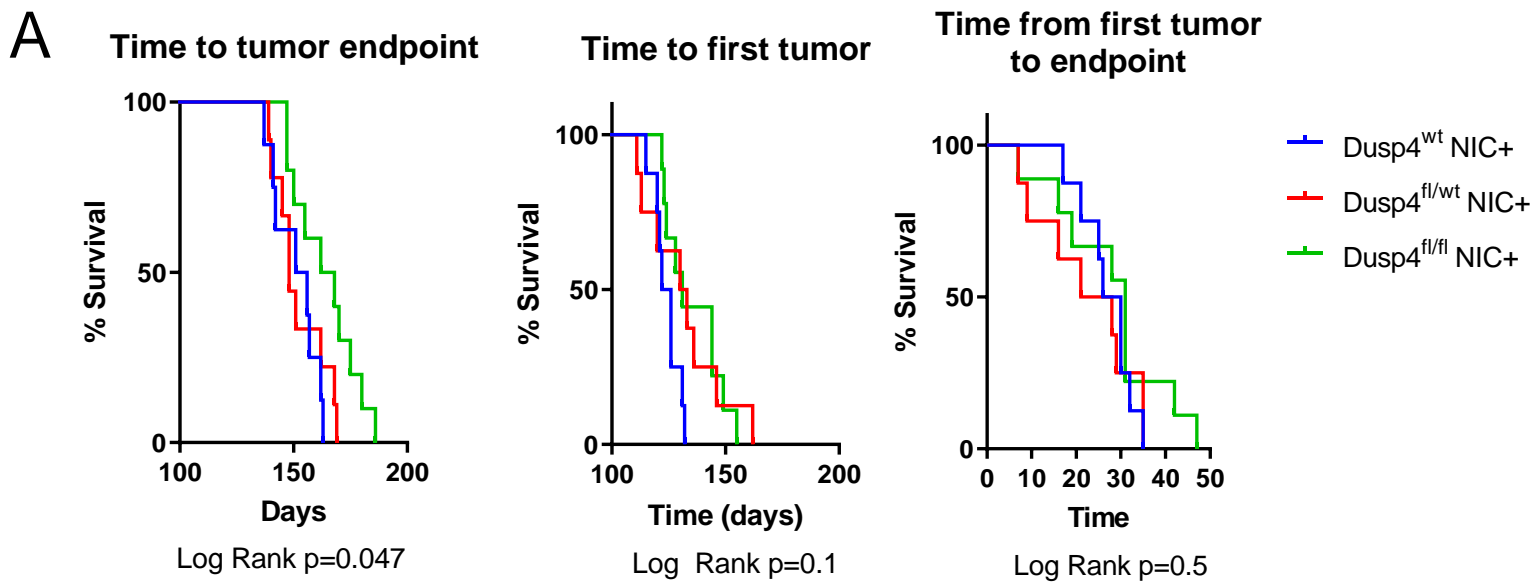
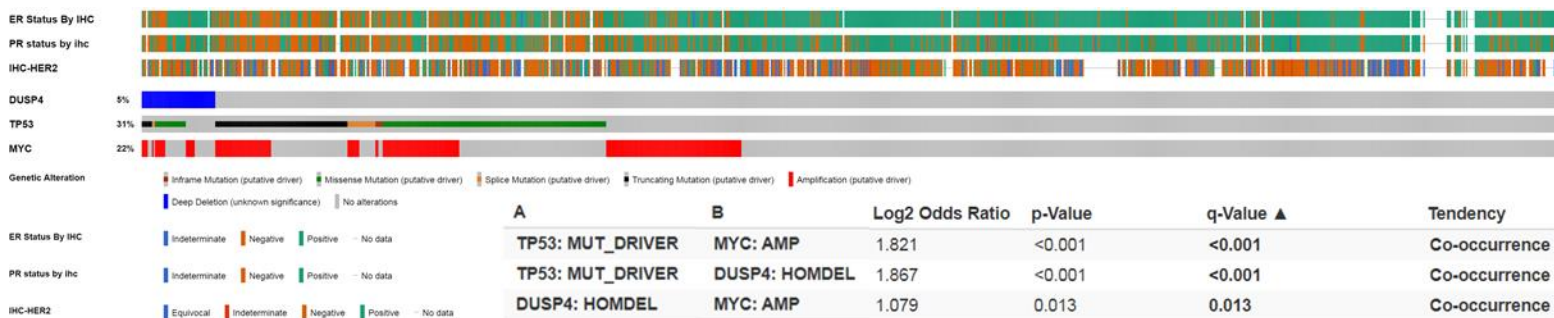


Supplementary Figure 1

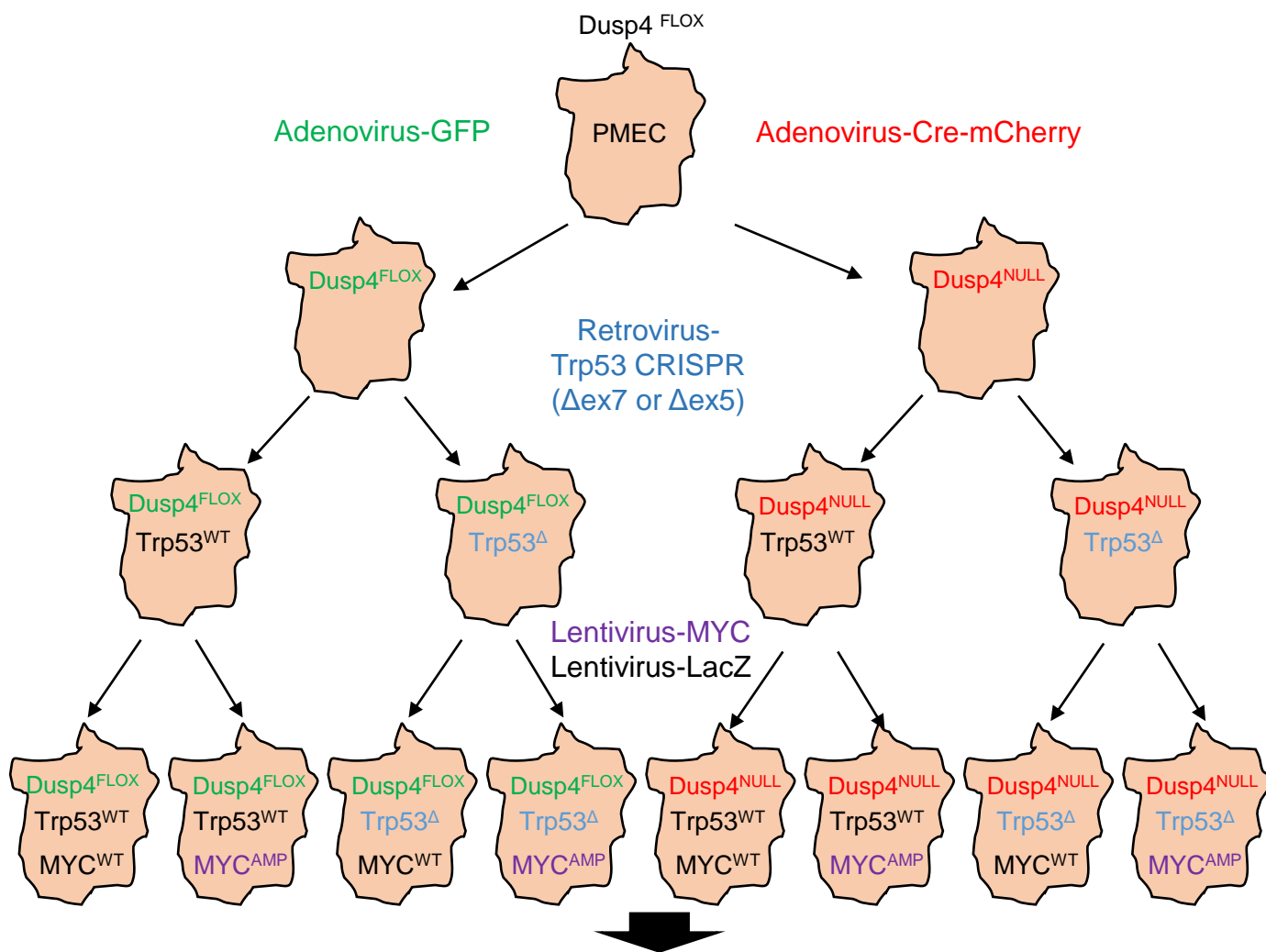


Supplementary Figure 2

A

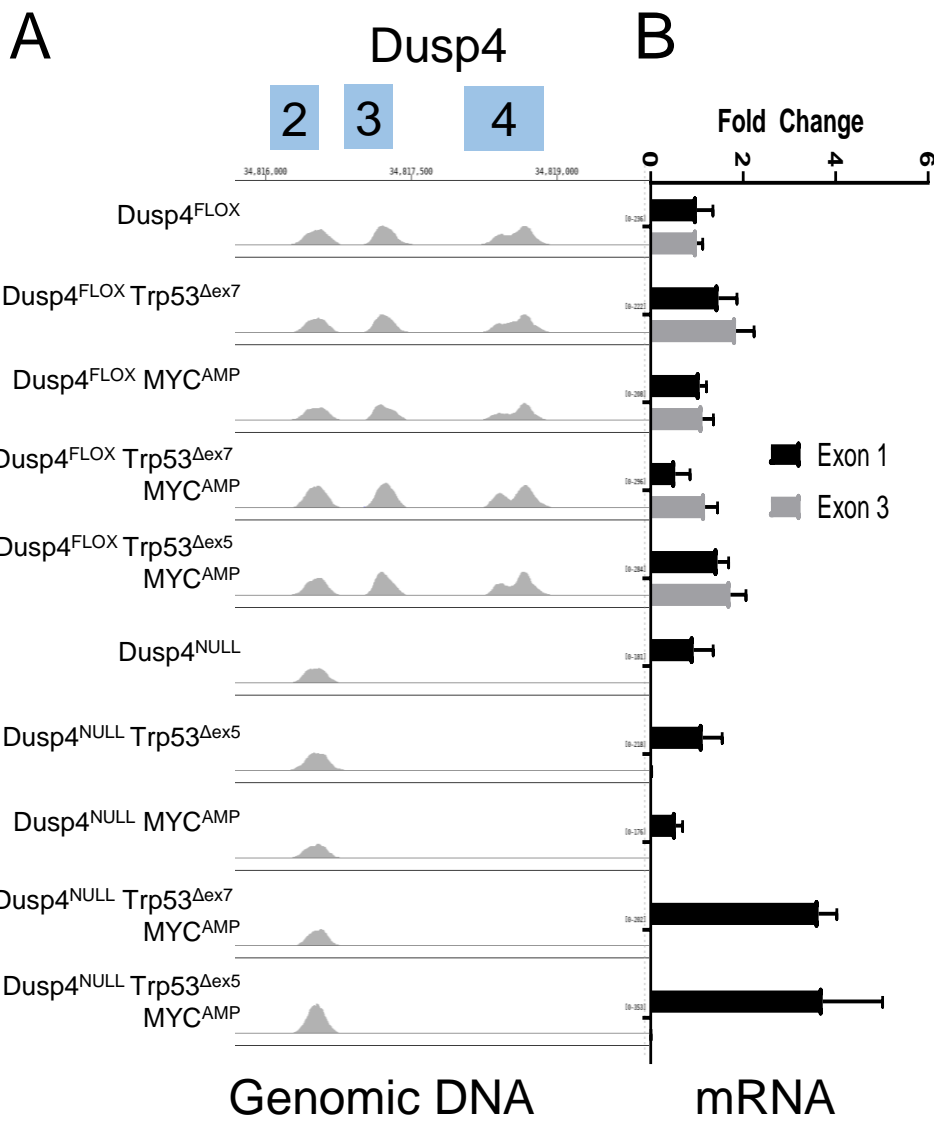


B



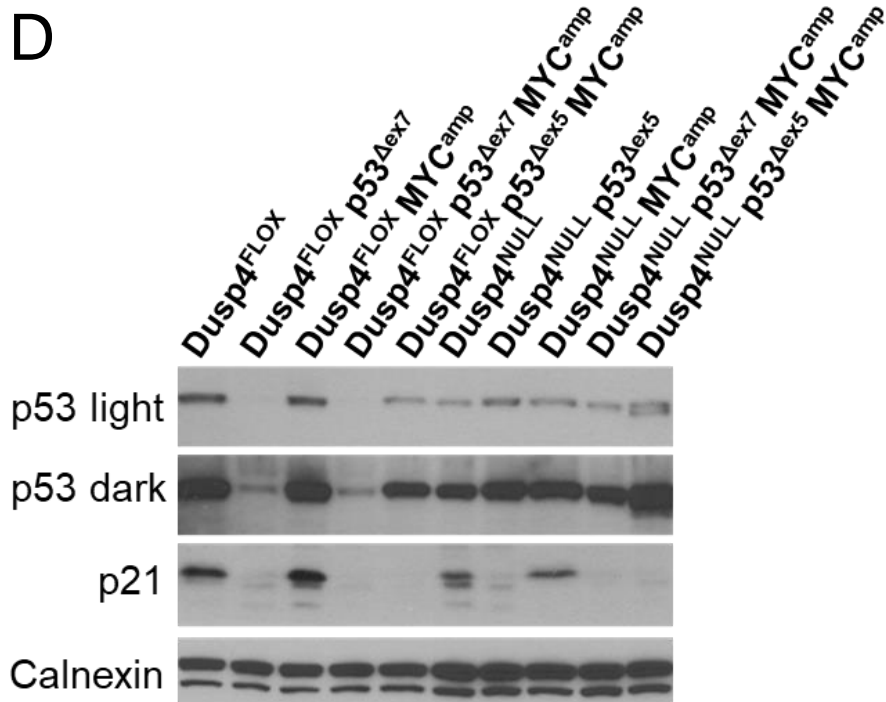
NGS and tumor implantation studies within 10 passages of cell line generation

Supplementary Figure 3



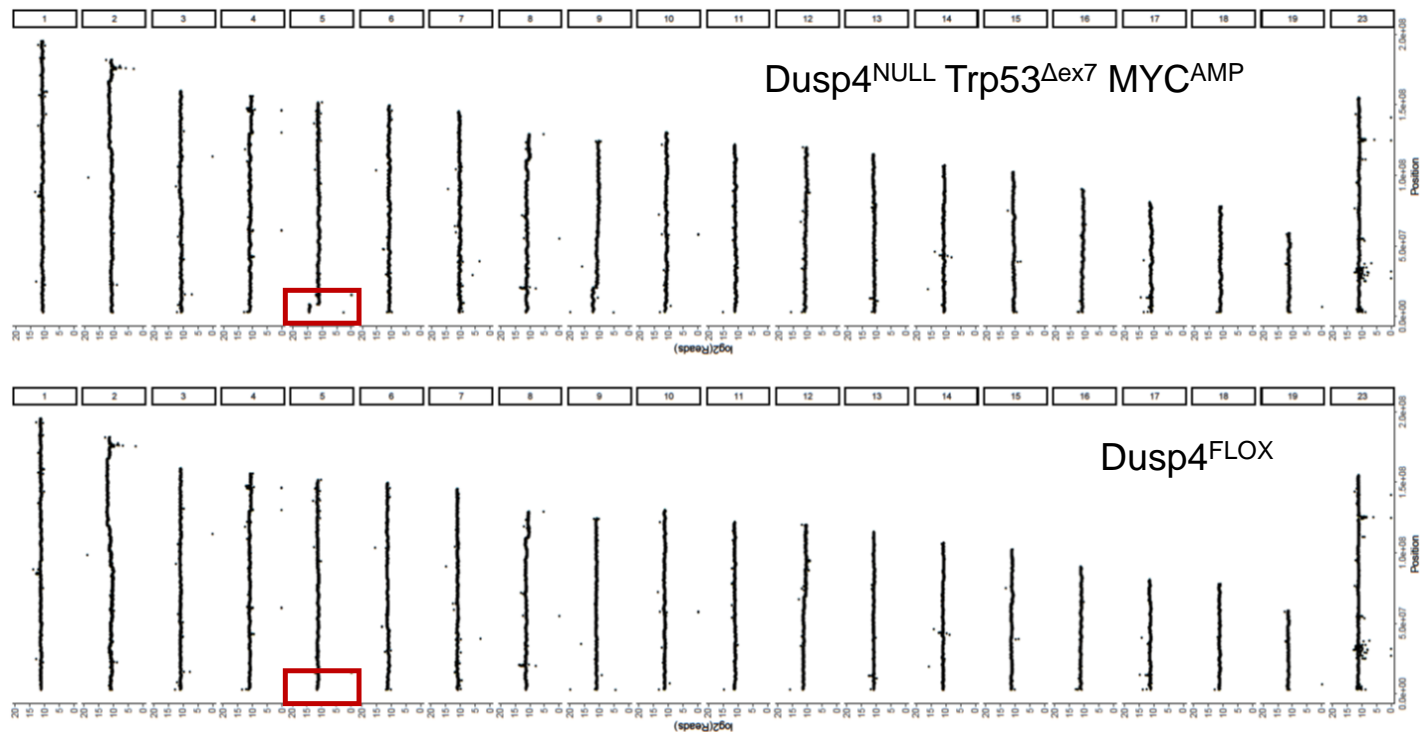
C

Dusp4^{FLOX}	No alterations detected
Dusp4^{FLOX} p53^{Δex7}	Heterozygous (53%) stop gain (C239X) in exon 7
Dusp4^{FLOX} MYC^{amp}	No alterations detected
Dusp4^{FLOX} p53^{Δex7} MYC^{amp}	Homozygous (100%) frameshift insertion (C239fs) in exon 7
Dusp4^{FLOX} p53^{Δex5} MYC^{amp}	Hemizygous (23%) frameshift deletion (K162fs) in exon 5; Near-homozygous (93%) downstream non-frameshift deletion (166_167del) in exon 5
Dusp4^{NULL}	No alterations detected
Dusp4^{NULL} p53^{Δex5}	Homozygous (100%) nonframeshift deletion (166_166del) in exon 5
Dusp4^{NULL} MYC^{amp}	No alterations detected
Dusp4^{NULL} p53^{Δex7} MYC^{amp}	Heterozygous (45%) non-frameshift deletion (233_244del) in exon 7; Near-homozygous (83%) downstream non-frameshift deletion (237_245del) in exon 7
Dusp4^{NULL} p53^{Δex5} MYC^{amp}	Heterozygous (45%) frameshift deletion (K162fs) in exon 5; homozygous (100%) downstream non-frameshift deletion (166_167del) in exon 5

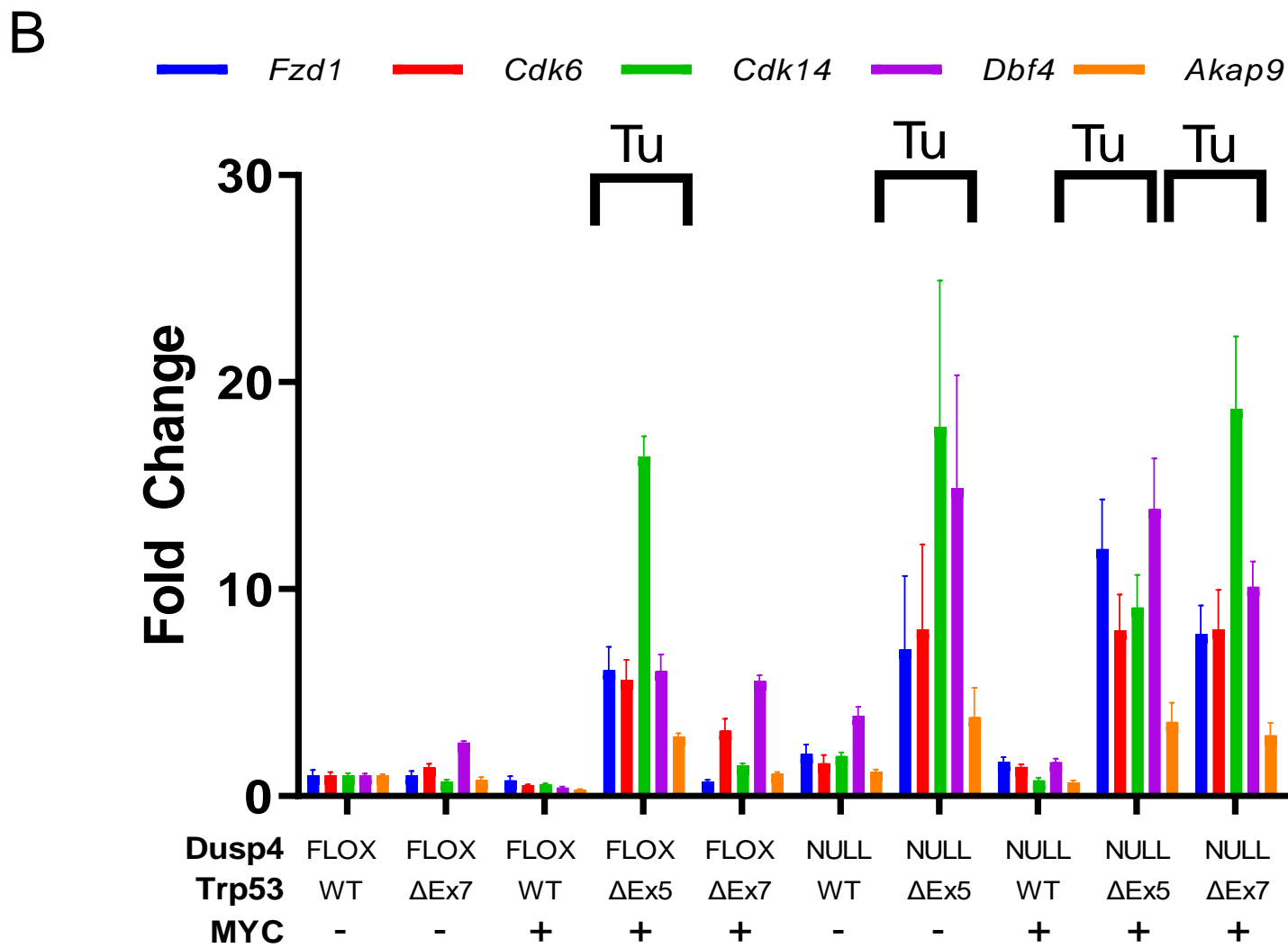
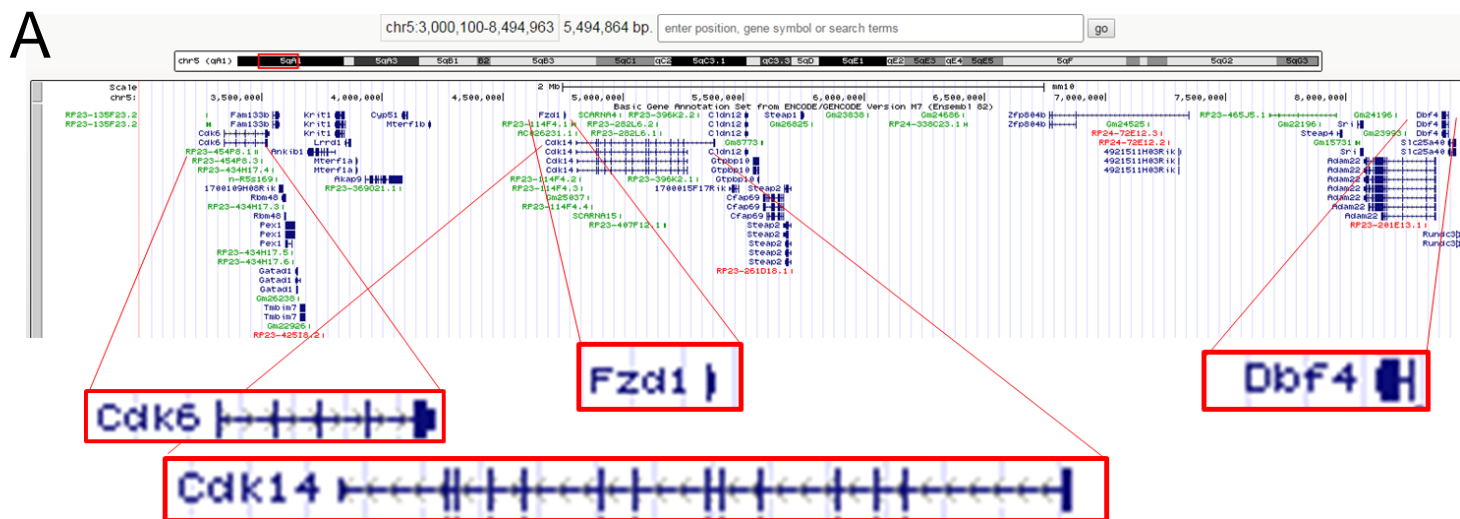


Supplementary Figure 4

A

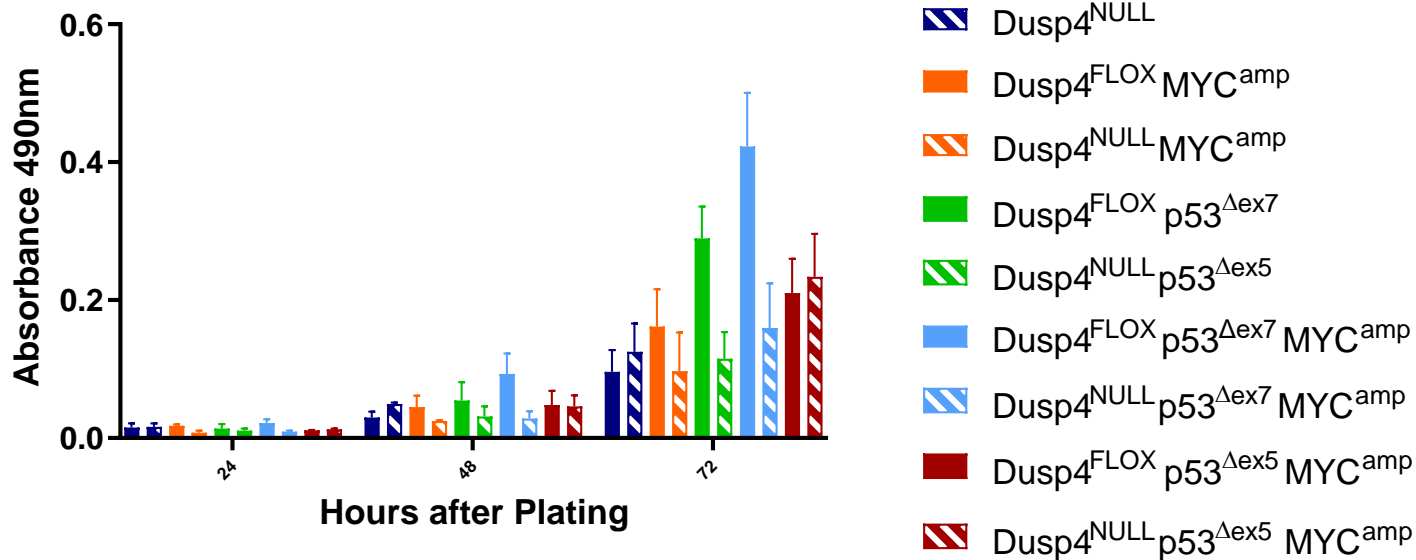


Supplementary Figure 5



Supplementary Figure 6

A



B

