

Supplementary Methods

Flow cytometric analysis

Table 1: Antibodies used for flow cytometric analysis

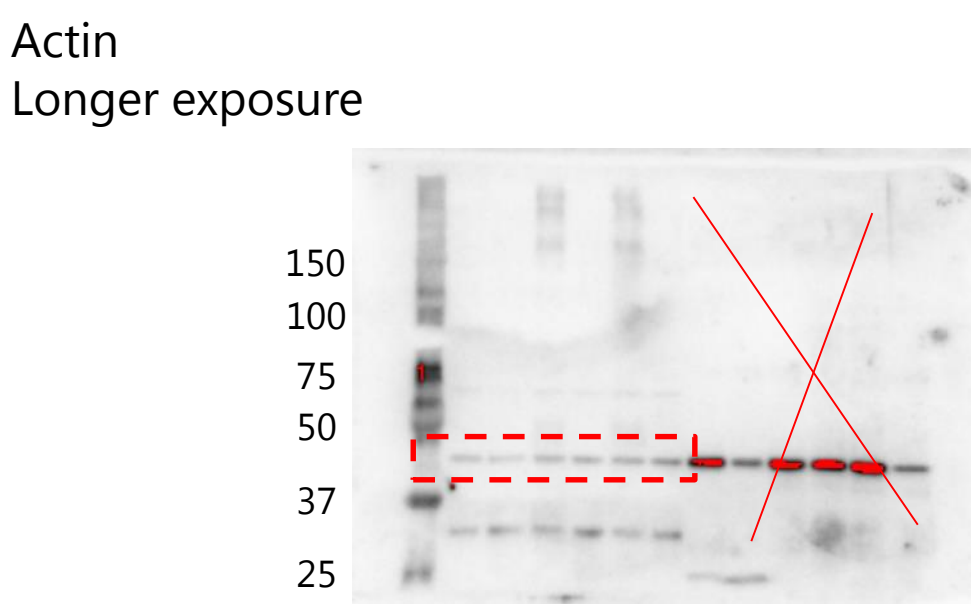
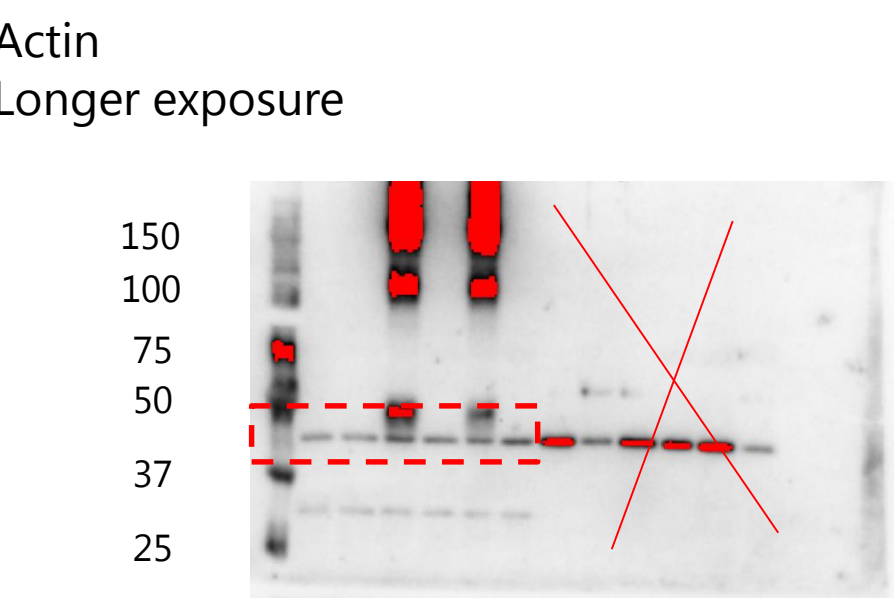
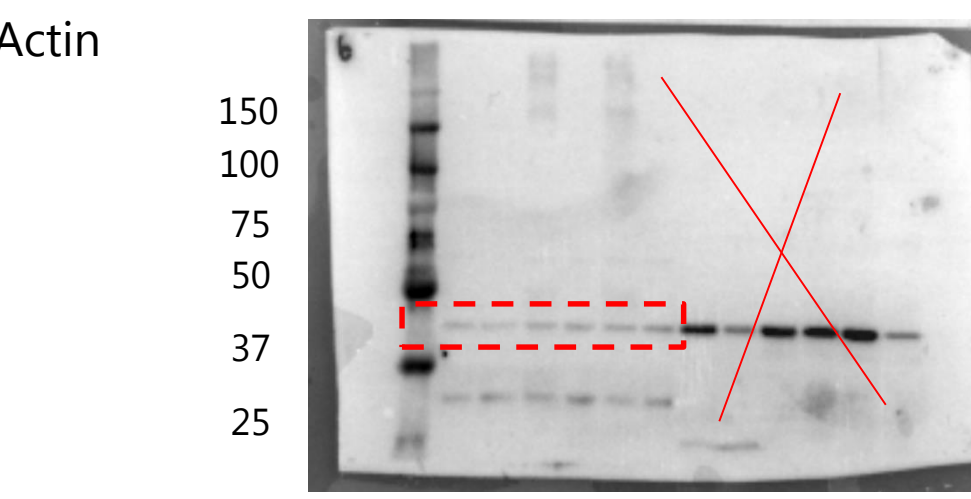
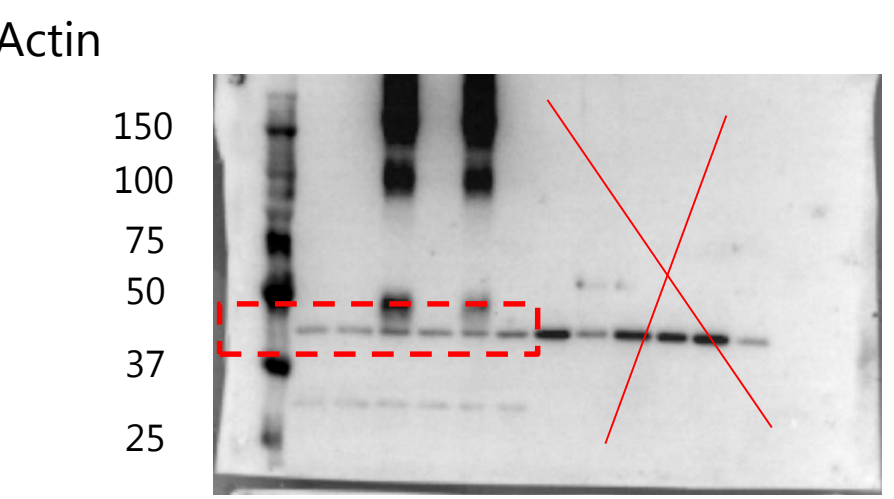
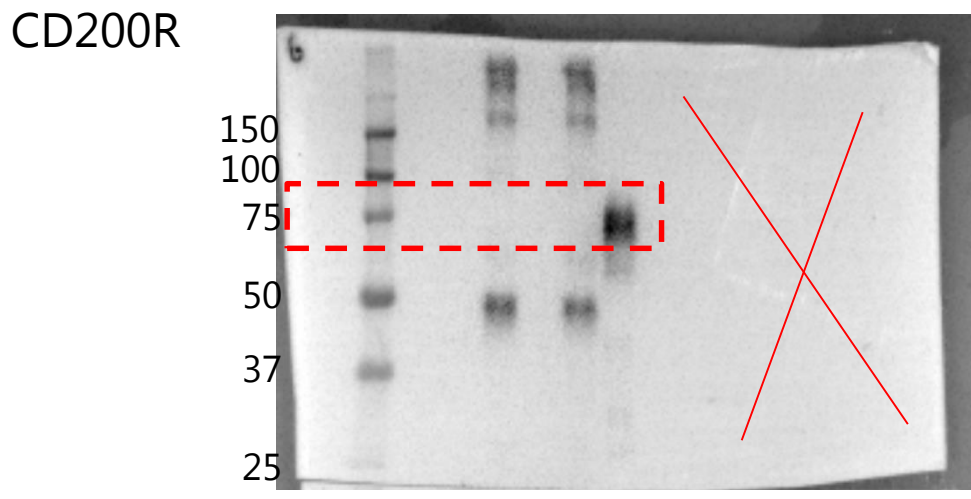
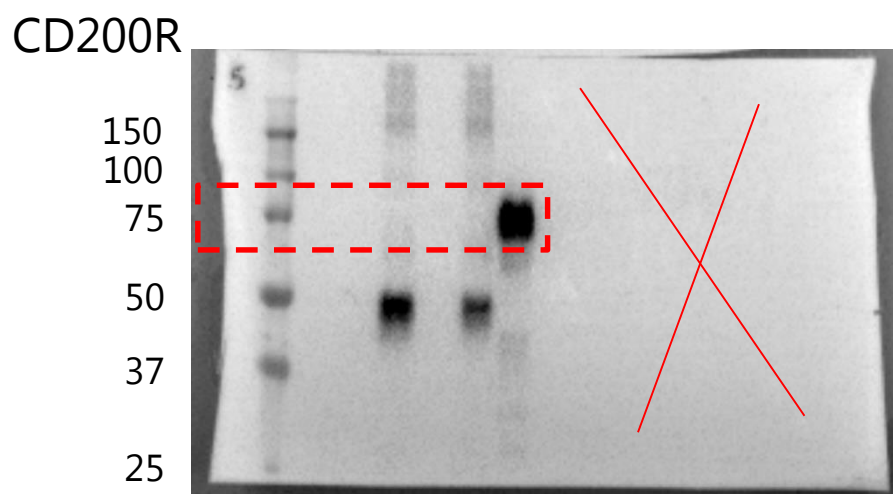
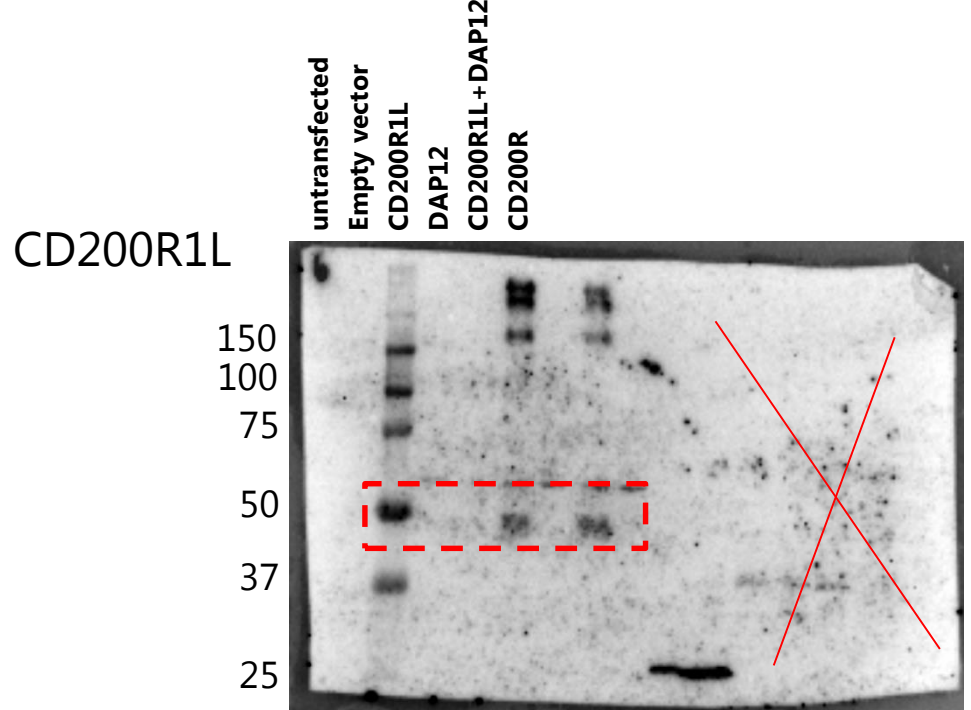
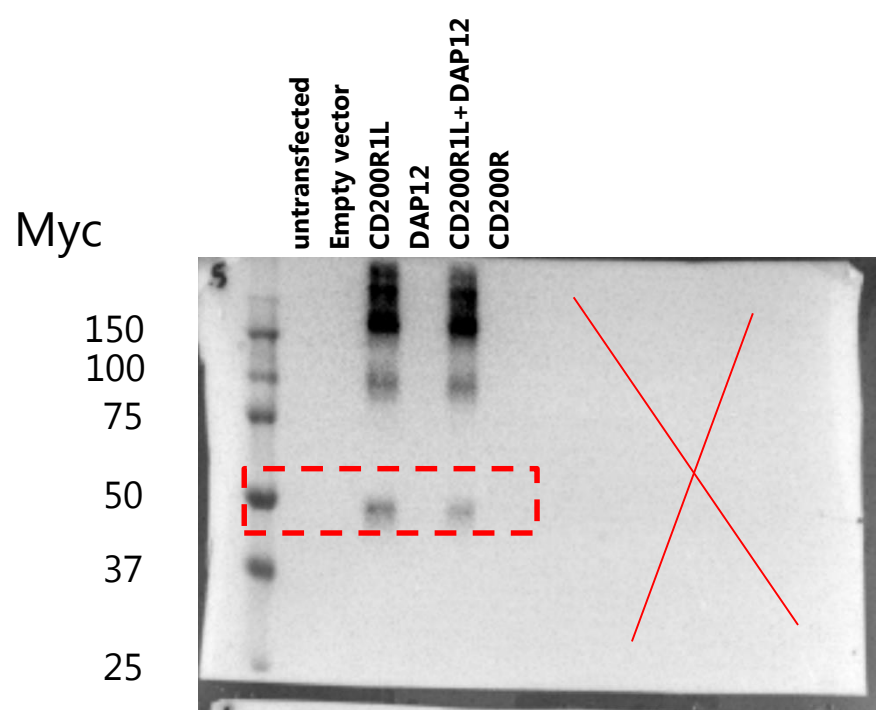
Antibodies	clone	isotype	company	Cat number
Anti-CD200R1L-biotin	6D6C1	Mouse IgG1	Sino Biological	11620-MM09-B
Unlabelled Anti-CD200R1L	6D6C1	Mouse IgG1	Sino Biological	11620-MM09
Anti-CD200-FITC	OX-104	IgG1	Serotec	MCA1960F
Anti-CD200R-PE	OX108	Mouse IgG1	eBioscience	12-9201-42
Anti-CD16-BV785	3G8	Mouse IgG1	Sony Biotechnology	2110230
Anti-CD14-ECD	RMO52	Mouse IgG2a	Beckman Coulter	IM2707U
Anti-CD11b-AF700	ICRF44	Mouse IgG1	BD	557918
Anti-CD62L-BV650	DREG-56	Mouse IgG1	AntibodyChain	2124160
Anti-CD203c- PE-Cy7	NP4D6	Mouse IgG1	eBioscience	25-2039-41
Anti-CD117- PerCP-Cy5.5	104D2	Mouse IgG1	Biolegend	313214
Anti-Myc -AF700	9E10	Mouse IgG1	R&D	IC3696N
IgG1 isotype control- biotin	MOPC-31C	Mouse IgG1	BD	550615
IgG isotype control- FITC	P3.6.2.8.1	Mouse IgG1	eBioscience	11-4714-82
IgG isotype control- PE	P3.6.2.8.1	Mouse IgG1	eBioscience	12-4714-82
Streptavidin-AF647			Invitrogen	S32357
Anti-mouse IgG (H+L)-APC		F(ab)'2	Southern Biotech	1032-11

Supplementary Table 1

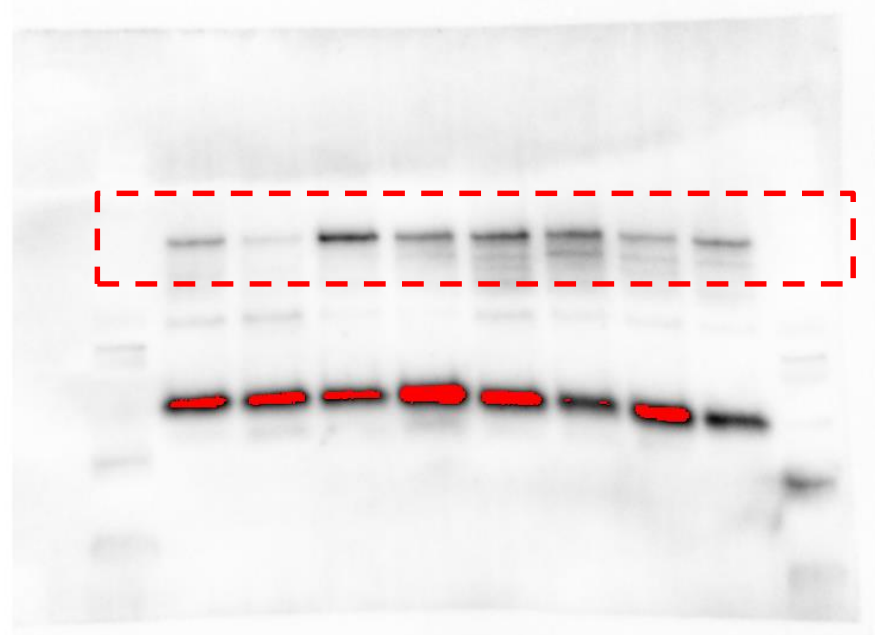
Reference sequences IDs	
109033055	CD200R_inhibitory_1_Macaca_mulatta
10946634	CD200R_inhibitory_1_Mus_musculus
114588494	CD200R_activating_1_Pan_troglodytes
114588498	CD200R_inhibitory_1_Pan_troglodytes
13027398	CD200R_inhibitory_1_Rattus_norvegicus
150247136	CD200R_inhibitory_1_Bos_taurus
20270365	CD200R_inhibitory_1_Homo_sapiens
224044068	CD200R_inhibitory_1-Taeniopygia_guttata
28892873	CD200R_activating_5_Mus_musculus
297284992	CD200R_activating_1_Macaca_mulatta
312837071	CD200R_activating_1_Homo_sapiens
332225393	CD200R_inhibitory_1_Nomascus_leucogenys
343780915	CD200R_inhibitory_1_Sus_scrofa
344282295	CD200R_inhibitory_1_Loxodonta_africana
344282297	CD200R_activating_1_Loxodonta_africana
346986386	CD200R_activating_2_Sus_scrofa
354471385	CD200R_activating_5_Cricetulus_griseus
354471387	CD200R_activating_2_Cricetulus_griseus
354471389	CD200R_inhibitory_1_Cricetulus_griseus
395850391	CD200R_activating_2_Otolemur_garnettii
395850393	CD200R_activating_1_Otolemur_garnettii
395850395	CD200R_inhibitory_1_Otolemur_garnettii
397509471	CD200R_activating_1_Pan_paniscus
397509475	CD200R_inhibitory_1_Pan_paniscus
402859025	CD200R_inhibitory_1_Papio_anubis
426341578	CD200R_activating_1_Gorilla_gorilla_gorilla
426341581	CD200R_inhibitory_1_Gorilla_gorilla_gorilla
441664851	CD200R_activating_1_Nomascus_leucogenys
449485852	CD200R_activating_1-Taeniopygia_guttata
45433592	CD200R_activating_3_Mus_musculus
45504373	CD200R_activating_2_Mus_musculus
46402237	CD200R_activating_4_Mus_musculus
478524966	CD200R_inhibitory_1_Ceratotherium_simum_simum
478524968	CD200R_activating_1_Ceratotherium_simum_simum
504131134	CD200R_inhibitory_1_Ochotona_princeps
504131137	CD200R_activating_1_Ochotona_princeps
507619527	CD200R_activating_1_Octodon_degus
507653622	CD200R_inhibitory_1_Octodon_degus
507662242	CD200R_activating_1_Echinops_telfairi
507662250	CD200R_inhibitory_1_Echinops_telfairi
507668976	CD200R_inhibitory_2_Octodon_degus
512924873	CD200R_inhibitory_1_Heterocephalus_glaber
512946795	CD200R_activating_1_Heterocephalus_glaber
514459914	CD200R_activating_1_Cavia_porcellus
514459918	CD200R_inhibitory_1_Cavia_porcellus
514738044	CD200R_activating_1_Anas_platyrhynchos
514794915	CD200R_inhibitory_1_Anas_platyrhynchos

524981196	CD200R_inhibitory_1_Ficedula_albicollis
524981198	CD200R_activating_1_Ficedula_albicollis
524981736	CD200R_inhibitory_2_Ficedula_albicollis
528899534	CD200R_activating_1_Bos_taurus
528936439	CD200R_activating_2_Bos_taurus
529429329	CD200R_inhibitory_1_Falco_peregrinus
529432671	CD200R_activating_1_Falco_peregrinus
532083990	CD200R_activating_1_Ictidomys_tridecemlineatus
532083994	CD200R_inhibitory_1_Ictidomys_tridecemlineatus
541989276	CD200R_inhibitory_1_Falco_cherrug
542154814	CD200R_inhibitory_1_Zonotrichia_albicollis
542164891	CD200R_activating_1_Zonotrichia_albicollis
543259283	CD200R_inhibitory_1_Geospiza_fortis
543259286	CD200R_activating_1_Geospiza_fortis
543264214	CD200R_activating_2_Geospiza_fortis
543360831	CD200R_inhibitory_1_Pseudopodoces_humilis
543361605	CD200R_activating_1_Pseudopodoces_humilis
543741296	CD200R_inhibitory_1_Columba_livia
543741428	CD200R_activating_1_Columba_livia
544416635	CD200R_inhibitory_1_Macaca_fascicularis
544416639	CD200R_activating_1_Macaca_fascicularis
545192588	CD200R_inhibitory_1_Equus_caballus
545192590	CD200R_activating_1_Equus_caballus
545866123	CD200R_activating_1_Sus_scrofa
548449652	CD200R_inhibitory_1_Capra_hircus
548449759	CD200R_activating_1_Capra_hircus
554557970	CD200R_inhibitory_1_Myotis_brandtii
554557972	CD200R_activating_1_Myotis_brandtii
555983041	CD200R_inhibitory_1_Bos_mutus
555983057	CD200R_activating_1_Bos_mutus
557267142	CD200R_activating_1_Alligator_sinensis
557269822	CD200R_inhibitory_1_Alligator_sinensis
557269824	CD200R_activating_2_Alligator_sinensis
558112448	CD200R_inhibitory_1_Pelodiscus_sinensis
558168107	CD200R_activating_1_Pelodiscus_sinensis
564314418	CD200R_activating_1_Rattus_norvegicus
586467313	CD200R_inhibitory_1_Chrysochloris_asiatica
586467317	CD200R_activating_1_Chrysochloris_asiatica
589925967	CD200R_inhibitory_1_Peromyscus_maniculatus_bairdii
589926021	CD200R_activating_1_Peromyscus_maniculatus_bairdii
589926023	CD200R_activating_2_Peromyscus_maniculatus_bairdii
594102006	CD200R_activating_1_Bubalus_bubalis
594102008	CD200R_inhibitory_1_Bubalus_bubalis
612017591	CD200R_activating_1_Monodelphis_domestica
612017595	CD200R_inhibitory_1_Monodelphis_domestica
617499742	CD200R_activating_1_Poecilia_formosa
617499745	CD200R_inhibitory_1_Poecilia_formosa
617564030	CD200R_activating_1_Erinaceus_europaeus
625256355	CD200R_inhibitory_2_Cricetulus_griseus
625256357	CD200R_activating_3_Cricetulus_griseus

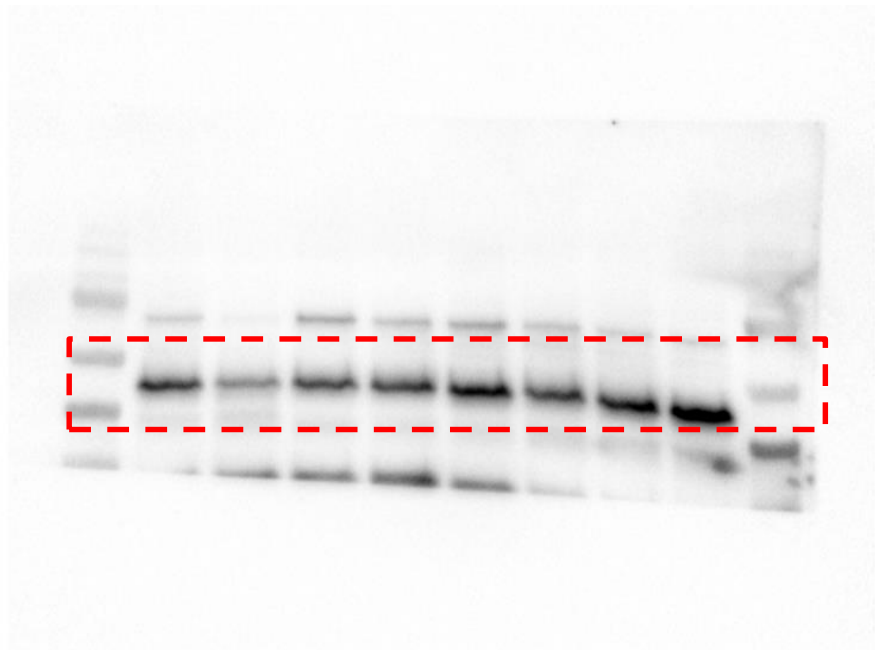
625256359	CD200R_activating_4_Cricetulus_griseus
635121848	CD200R_inhibitory_1_Chlorocebus_sabaeus
635121860	CD200R_activating_1_Chlorocebus_sabaeus
640824441	CD200R_activating_1_Tarsius_syrichta
640824443	CD200R_inhibitory_1_Tarsius_syrichta
640824445	CD200R_inhibitory_2_Tarsius_syrichta
640824447	CD200R_inhibitory_3_Tarsius_syrichta
641750607	CD200R_activating_1_Chrysemys_picta_bellii
655854913	CD200R_activating_1_Oryctolagus_cuniculus
655854916	CD200R_inhibitory_1_Oryctolagus_cuniculus
663244045	CD200R_activating_1_Calypte_anna
663288446	CD200R_inhibitory_1_Calypte_anna
664751846	CD200R_inhibitory_1_Equus_przewalskii
664751850	CD200R_activating_1_Equus_przewalskii
669275215	CD200R_activating_1_Corvus_brachyrhynchos
669275833	CD200R_inhibitory_1_Corvus_brachyrhynchos
671028101	CD200R_inhibitory_1_Ursus_maritimus
671028103	CD200R_activating_1_Ursus_maritimus
672071195	CD200R_inhibitory_2_Rattus_norvegicus
674075780	CD200R_inhibitory_1_Nannospalax_galili
674075782	CD200R_activating_1_Nannospalax_galili
675415240	CD200R_inhibitory_1_Manacus_vitellinus
675420272	CD200R_activating_1_Manacus_vitellinus
675731957	CD200R_inhibitory_1_Callithrix_jacchus
675732268	CD200R_activating_1_Callithrix_jacchus
685522873	CD200R_activating_1_Papio_anubis
686587297	CD200R_inhibitory_1_Aptenodytes_forsteri
686593650	CD200R_activating_1_Aptenodytes_forsteri
528467467	CD200_Danio_rerio
26006825	CD200_Mus_Musculus



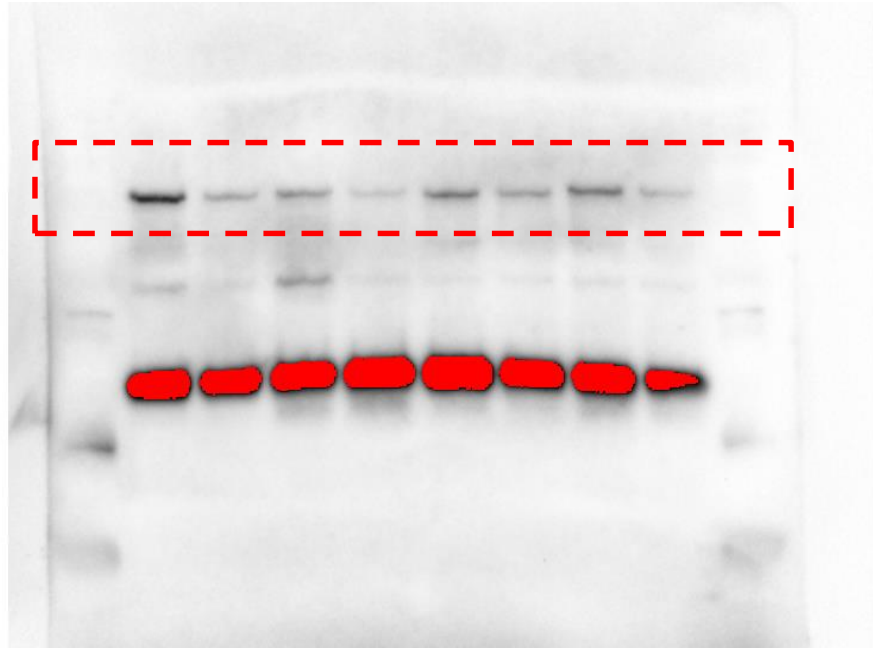
Full size blot of figure 1F (CD200R1L)



Full size blot of figure 1F (Actin – cut at ~25kD)



Full blot of Supplementary figure 2B (CD200R1L)



Full blot of Supplementary figure 2B (Actin – Cut at ~25kD)

