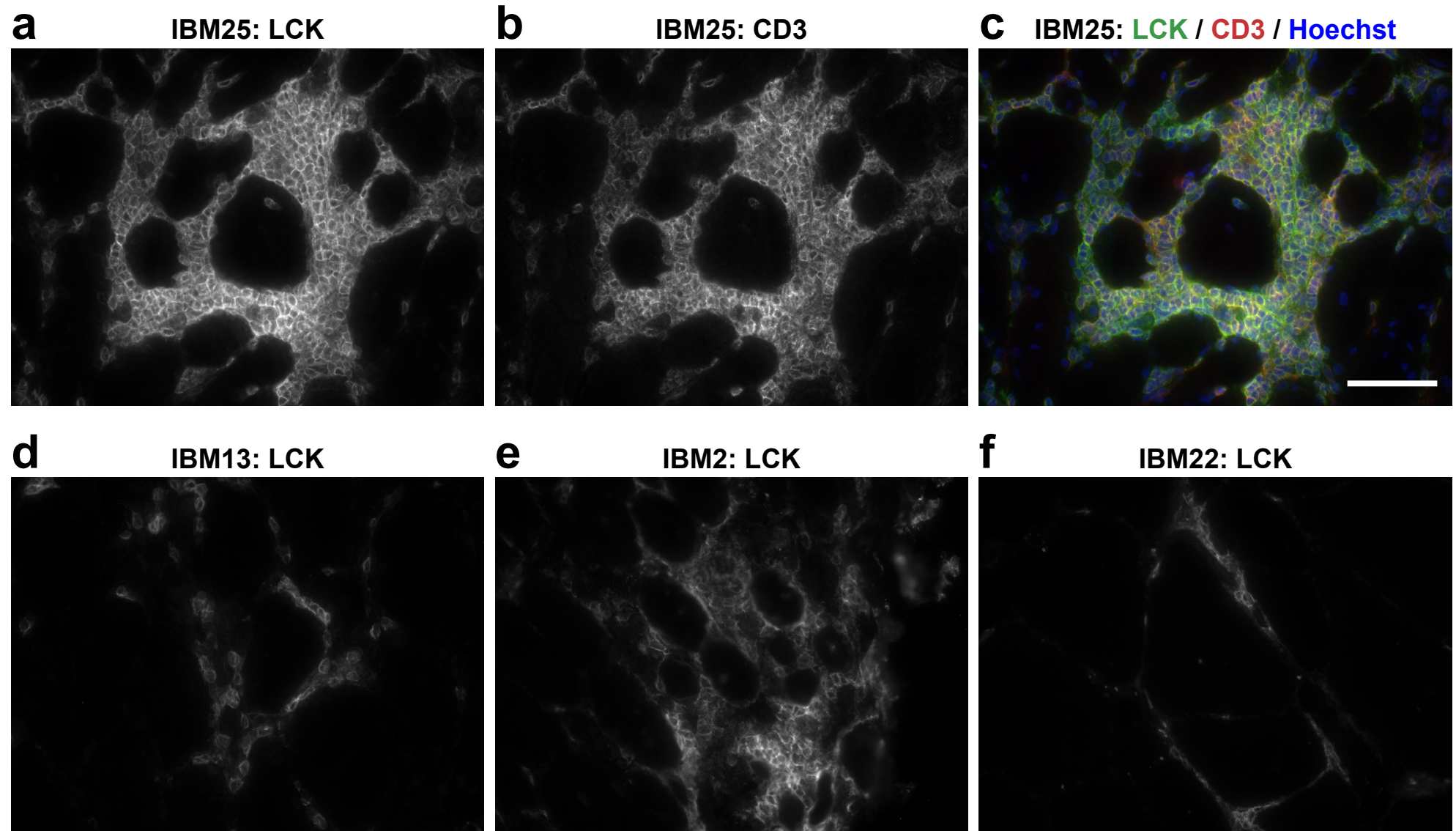


Supplementary Figure 1: Estimation of immune cell fraction

Estimation of immune cell fraction using Immunedecconv and CIBERSORT in individual samples of the three cohorts: IBM, TMD and Amputees. Twenty-two different immune cell types are represented with respective colors as shown in the legend.



Supplementary Figure 2

a–c Muscle biopsy of IBM25 showing massive inflammatory infiltrate. **(a)** Strong LCK staining is seen in most lymphocytes, which are identified as T-cells by the anti-CD3 antibody **(b)**. The merged image **(c)** shows LCK in green, CD3 in red, Hoechst in blue.

d–e A variable number of T-cells expressing LCK are observed in three additional IBM muscle biopsies showing inflammation. Scale bar = 50 μ m.