

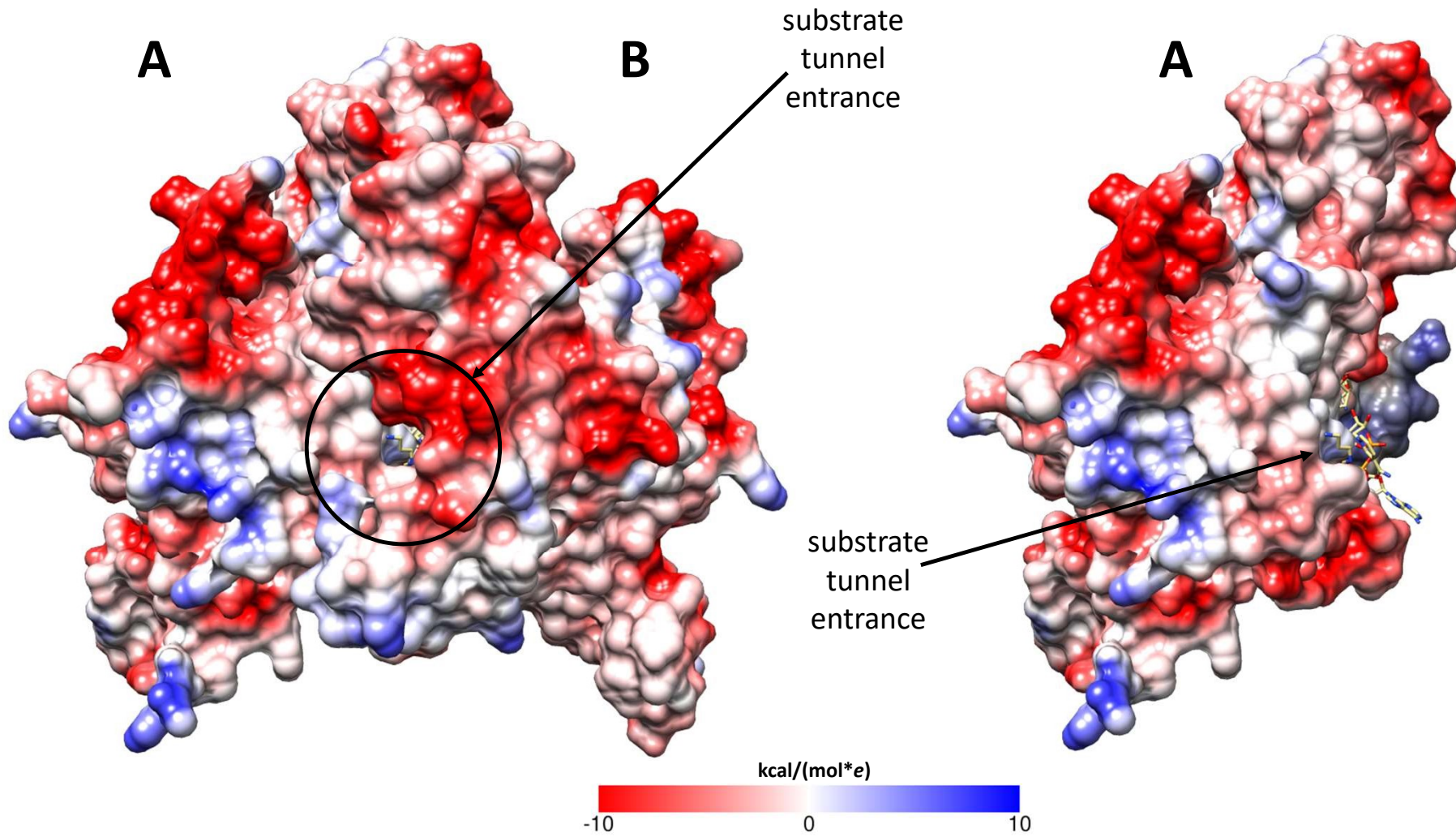
Supplemental figure 4. **Representations of the electrostatic surfaces of the homology models.**

Shown are the models of the A-B dimer and the A monomer from:

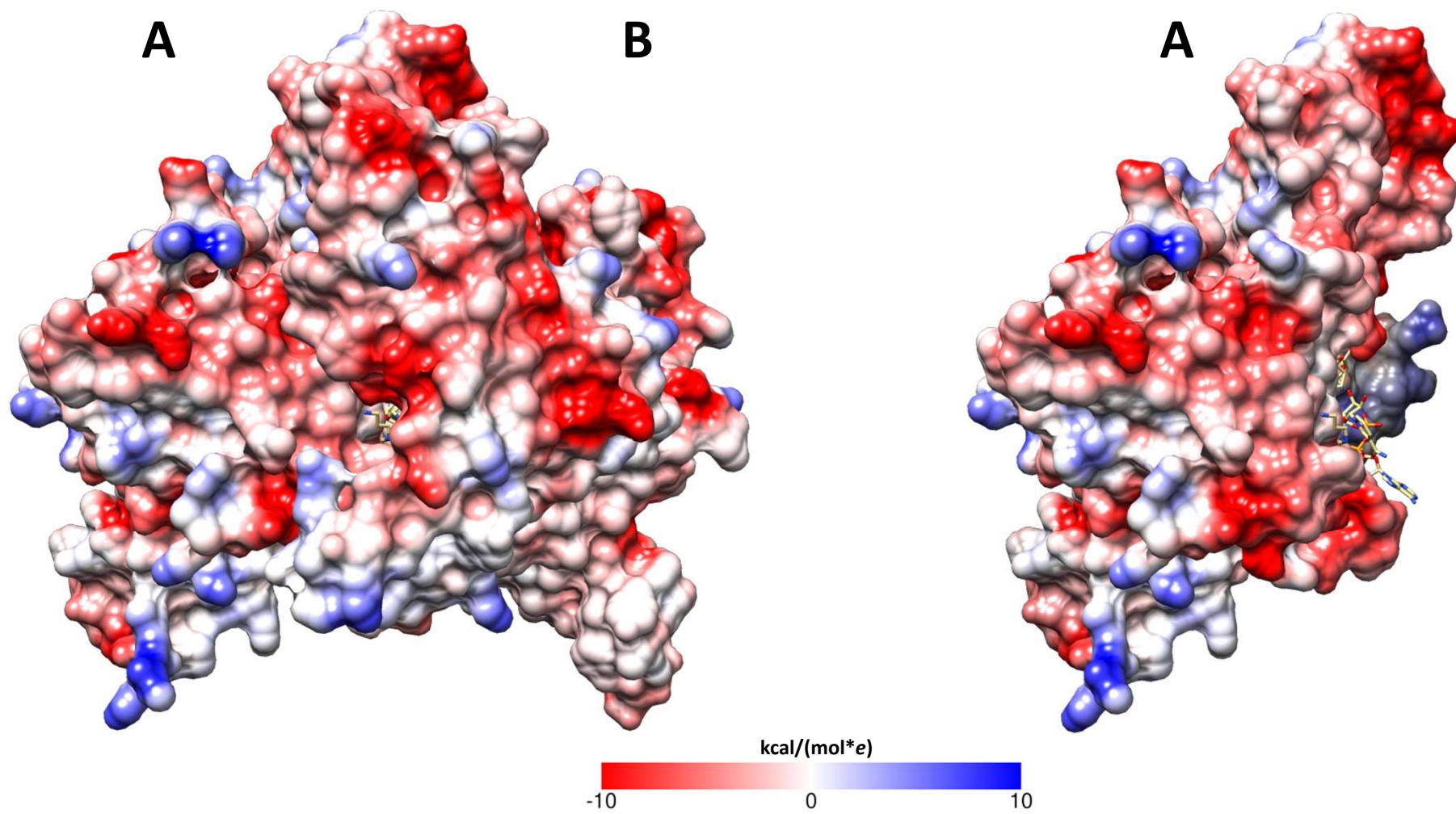
- *Ipomoea neei* DHS & HSS
- *Ipomoea alba* DHS & HSS
- *Camonea umbellata* DHS & HSS
- *Distimake quinquefolius* individuum 1 and 2, DHS & HSS

The substrate tunnel entrance is highlighted in the models of *I. neei* DHS (slide 2 and slide 12). Positively and negatively charged regions are denoted as blue and red, respectively.

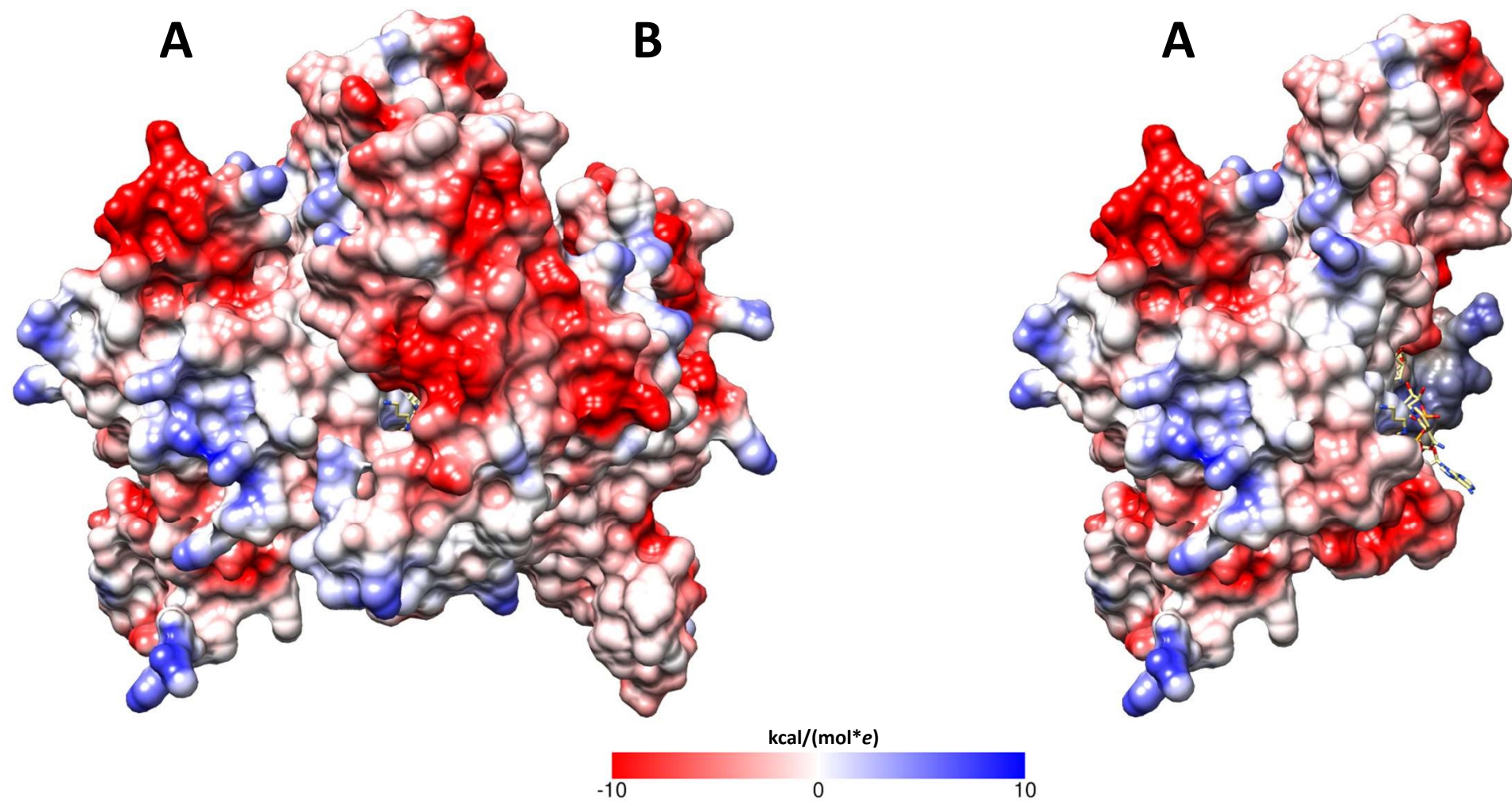
Ipomoea neei DHS



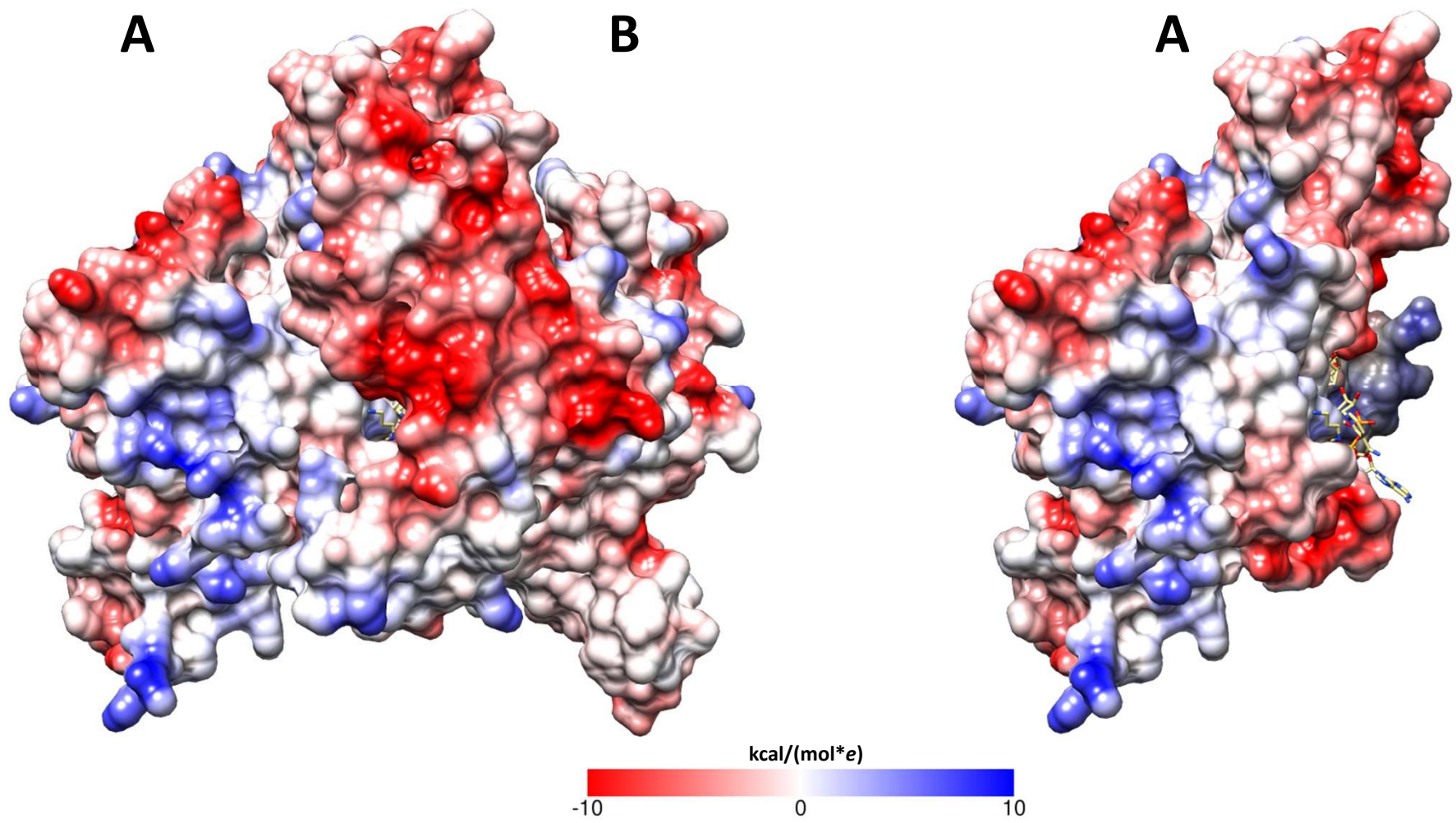
Ipomoea neei HSS



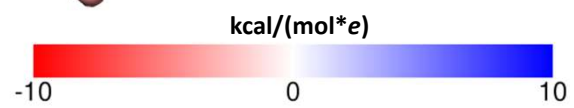
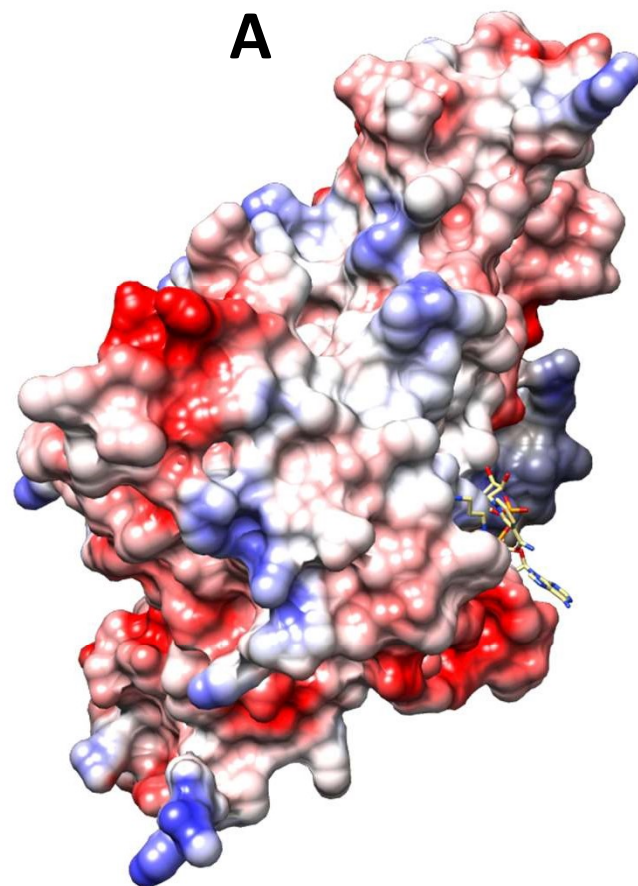
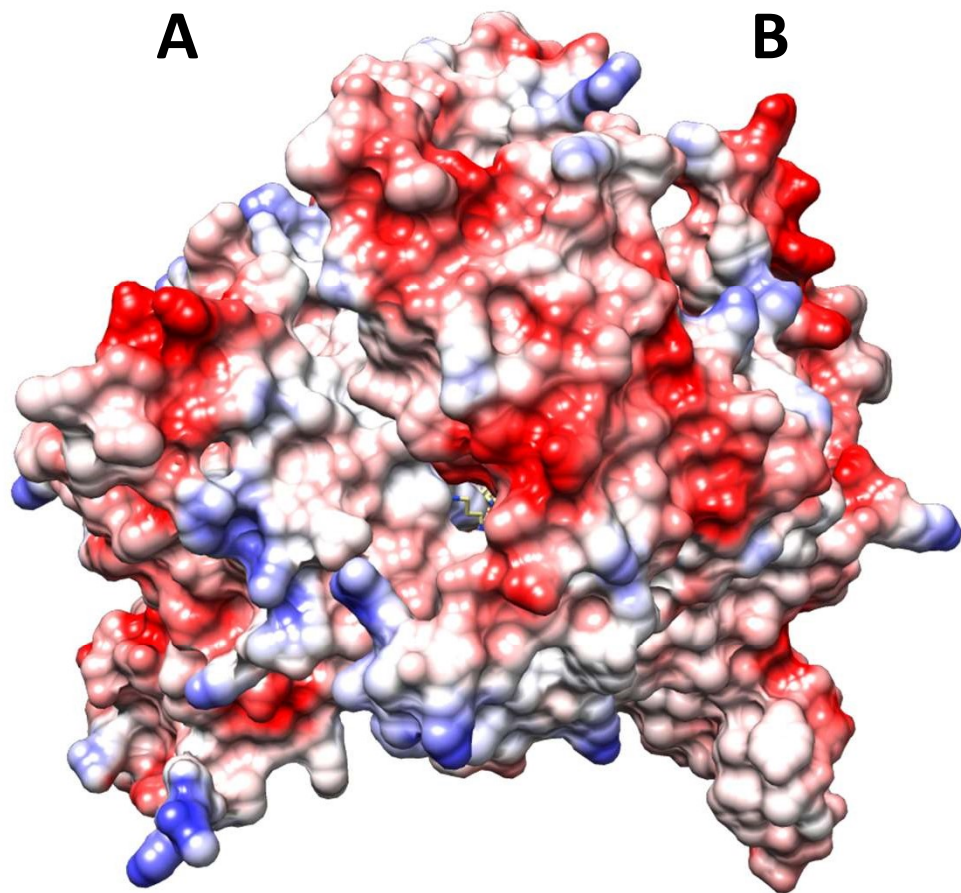
Ipomoea alba DHS



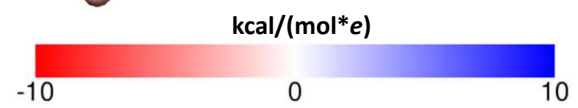
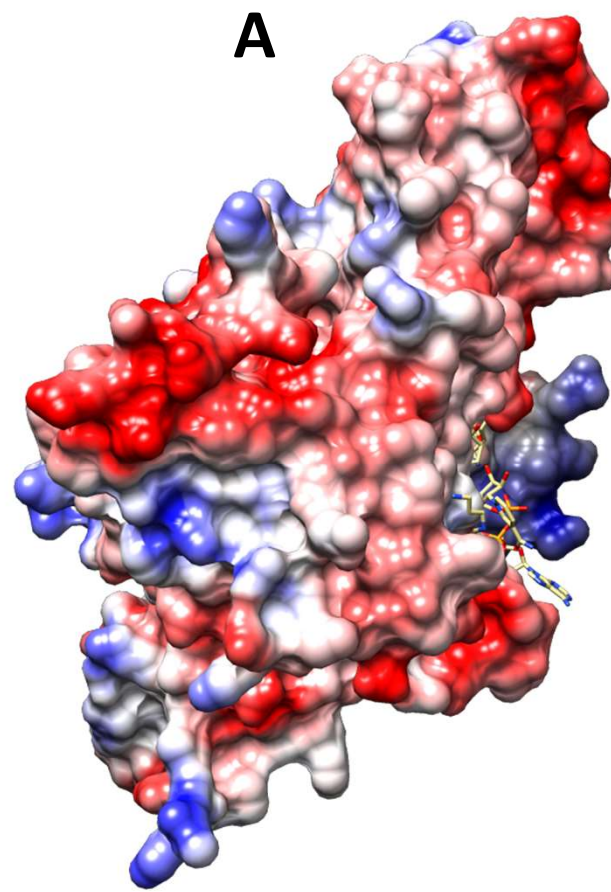
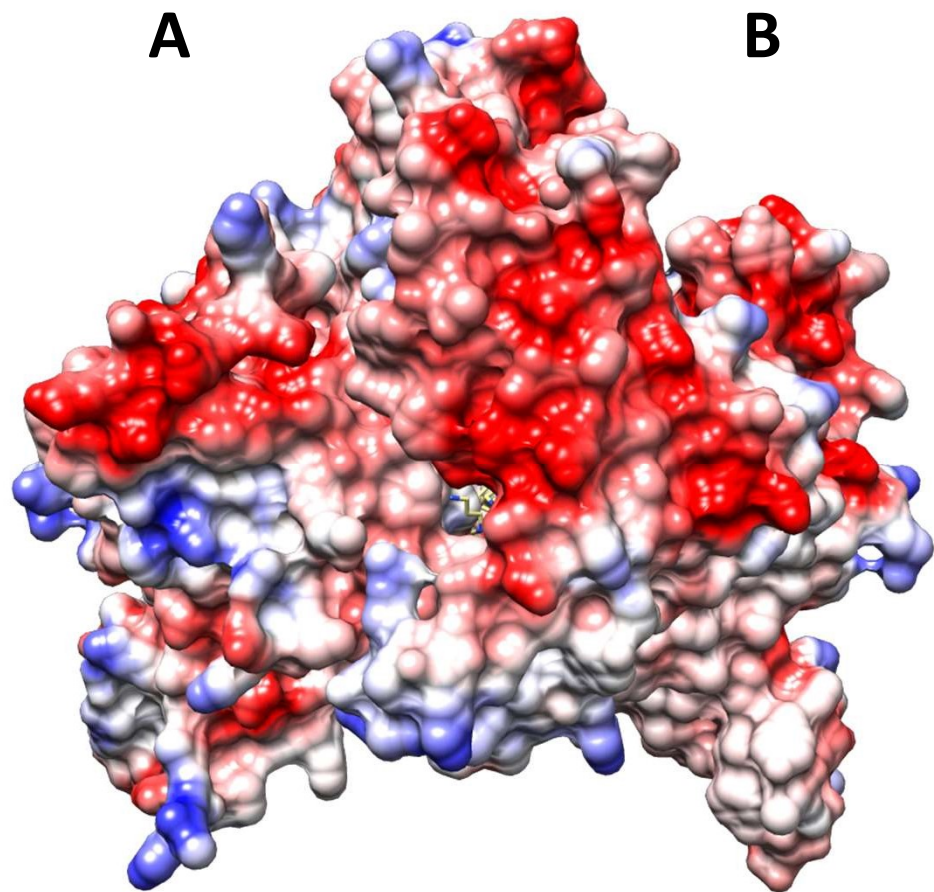
Ipomoea alba HSS



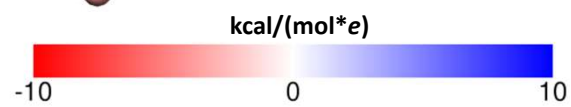
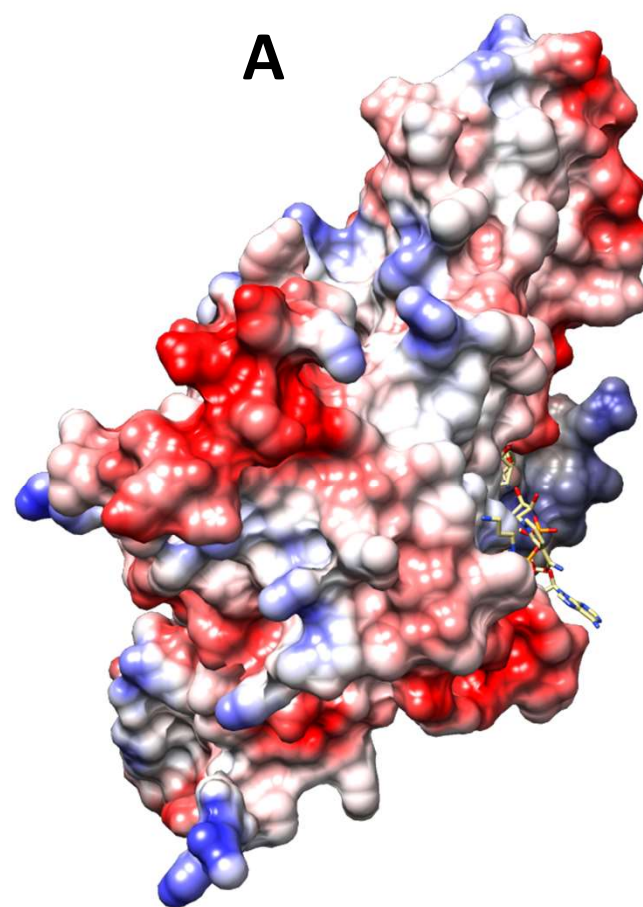
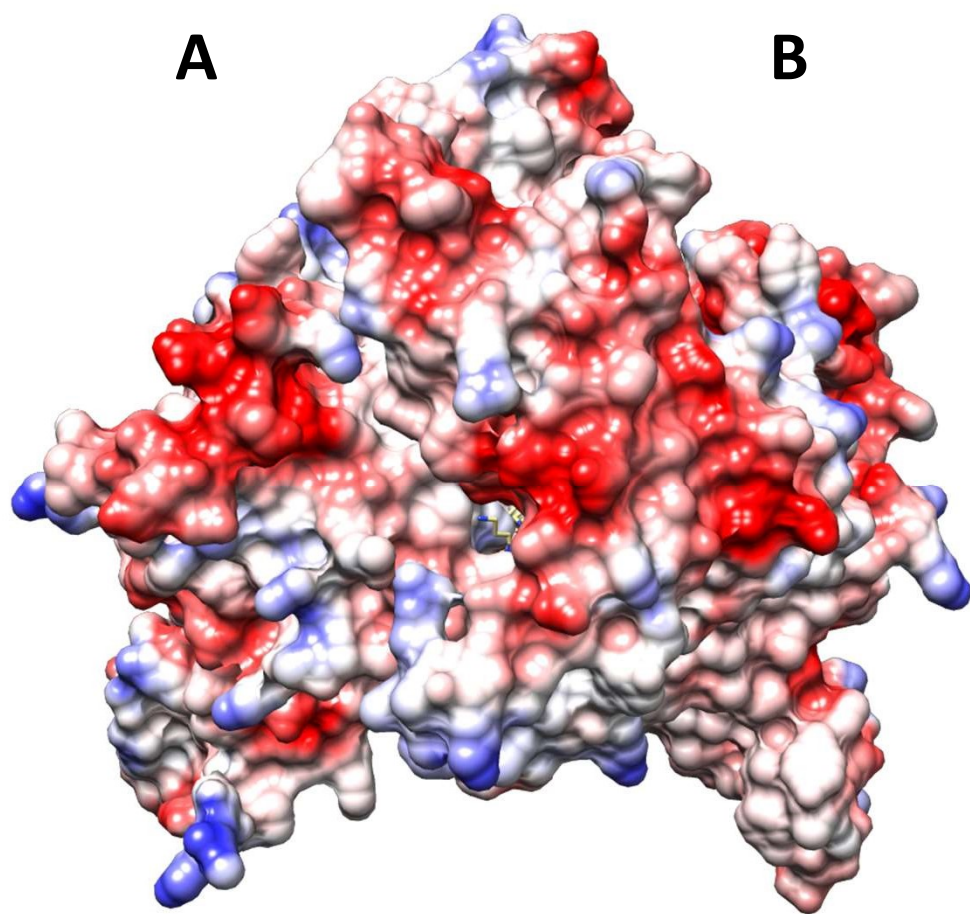
Camonea umbellata DHS



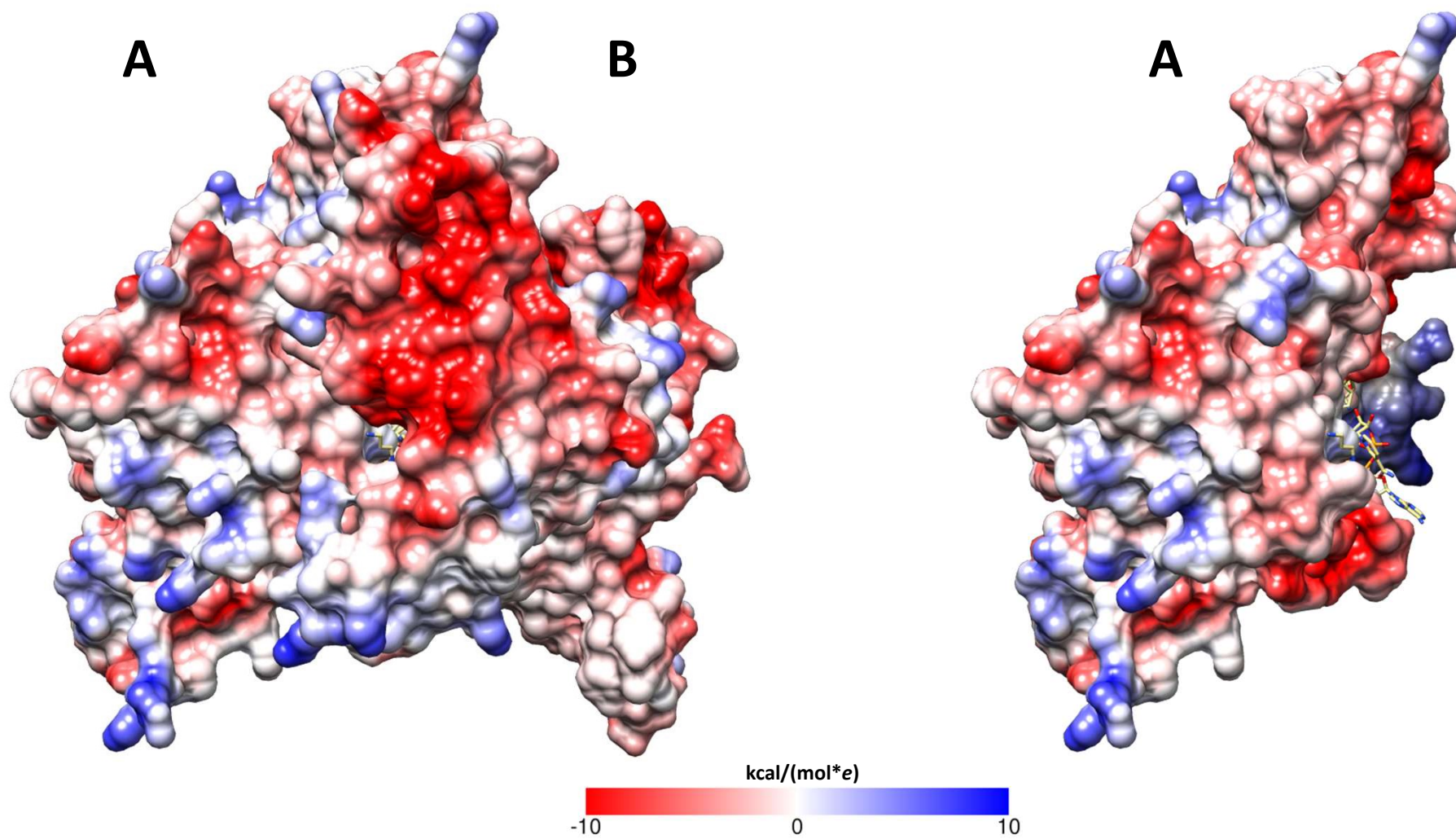
Camonea umbellata HSS



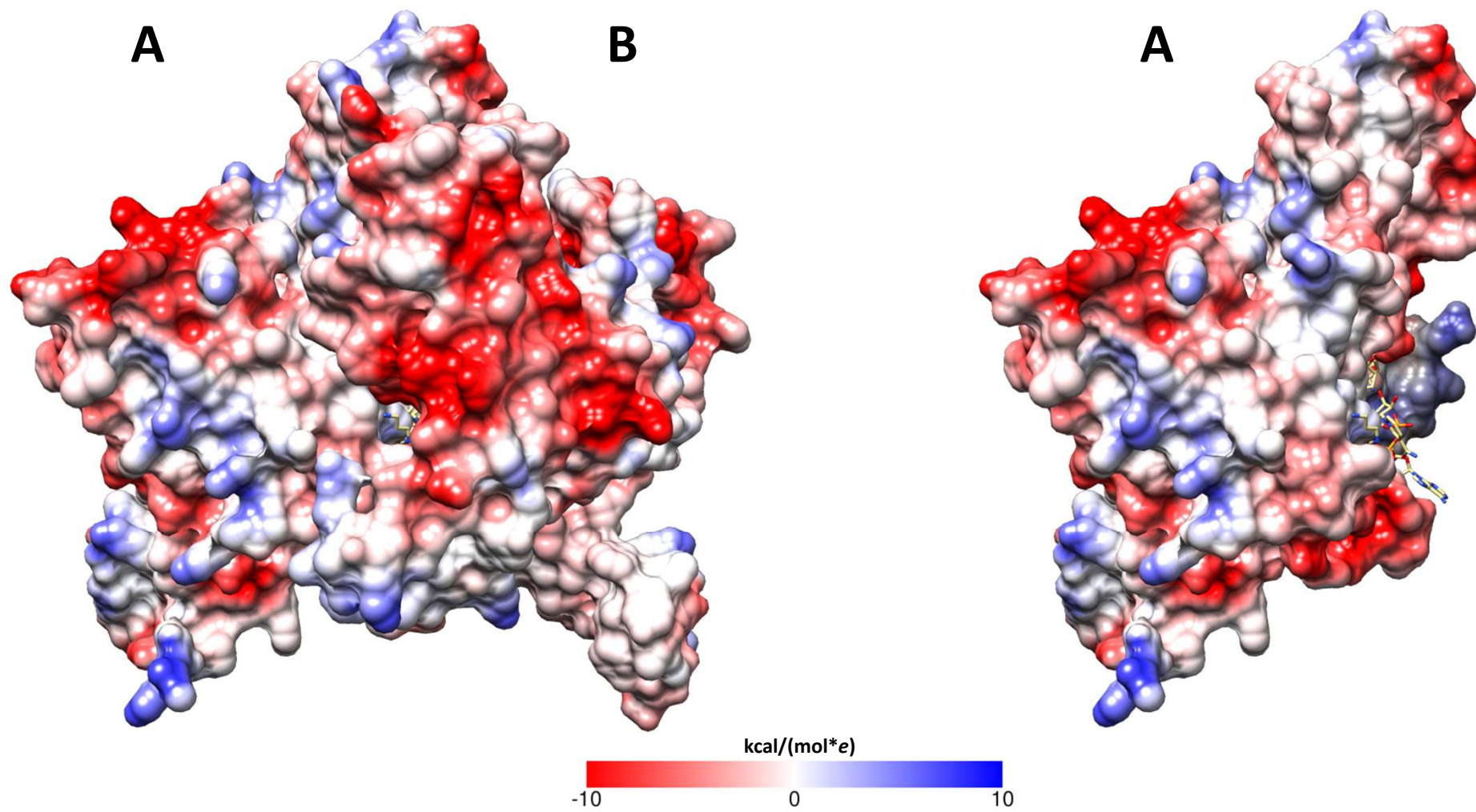
Distimake quinquefolius 1 DHS



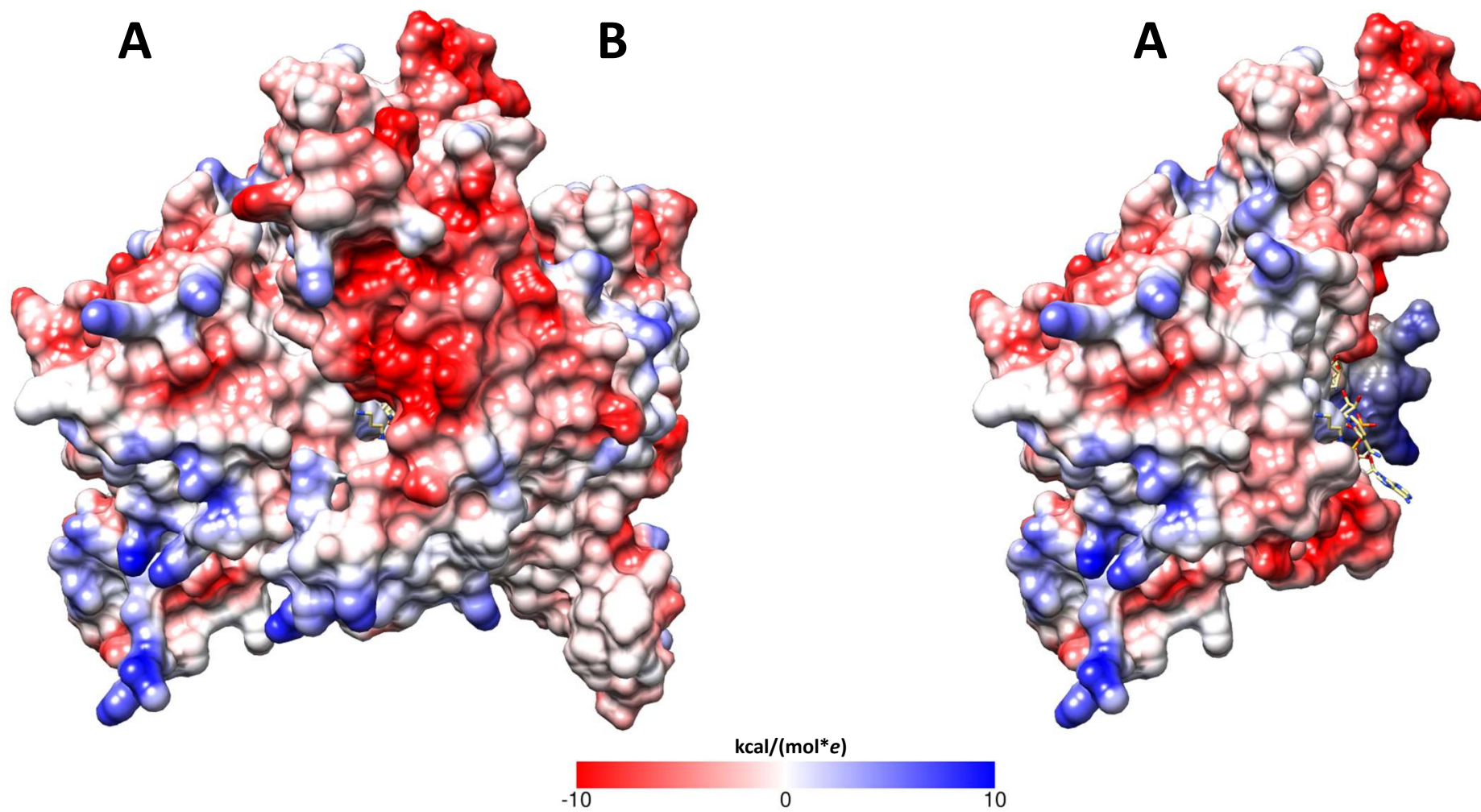
Distimake quinquefolius 1 HSS



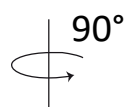
Distimake quinquefolius 2 DHS

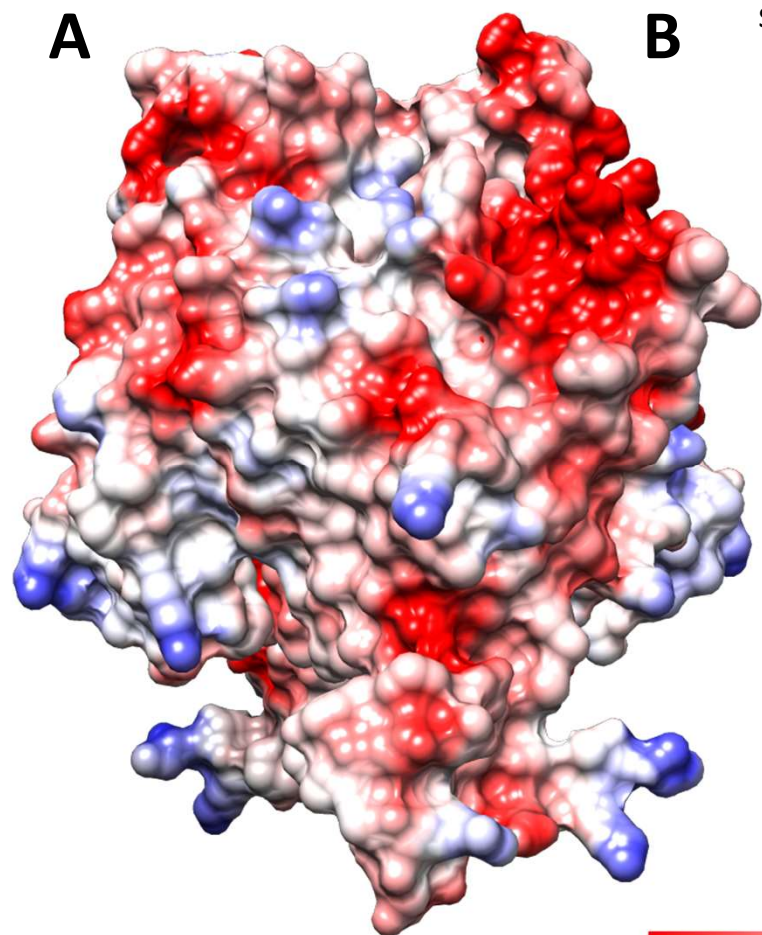


Distimake quinquefolius 2 HSS

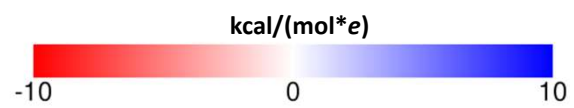
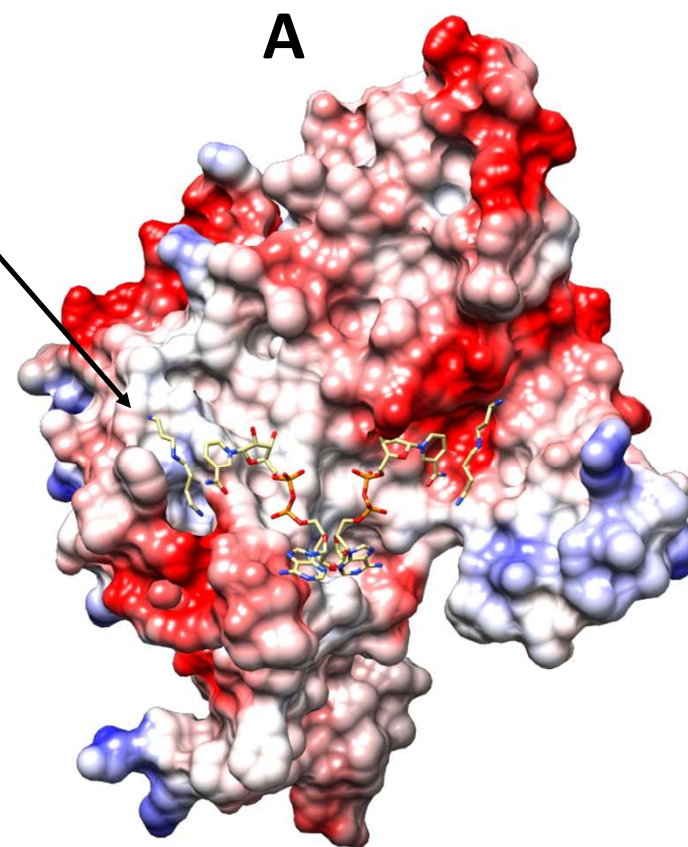


Ipomoea neei DHS

90°


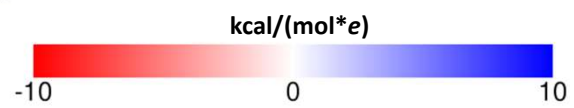
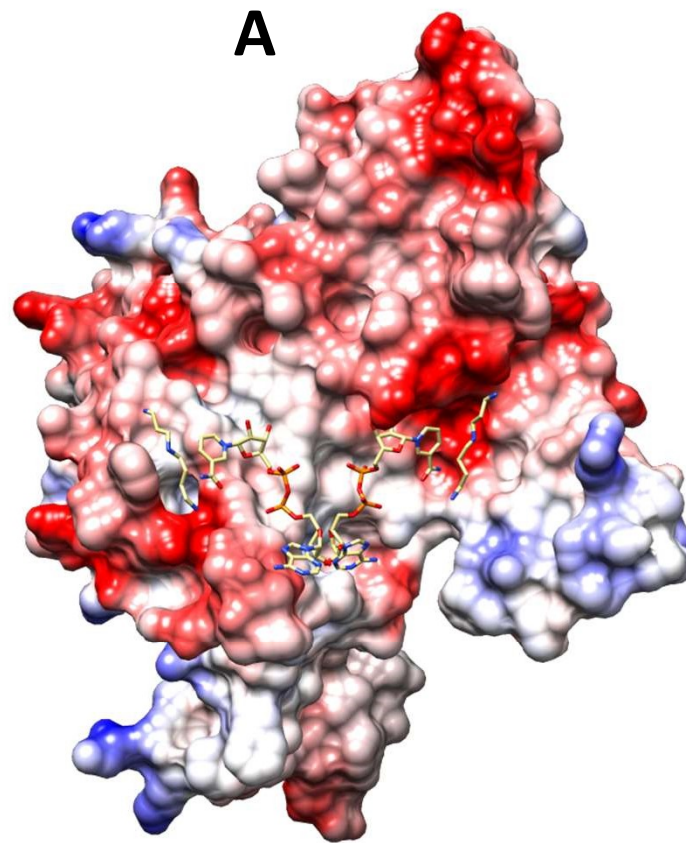
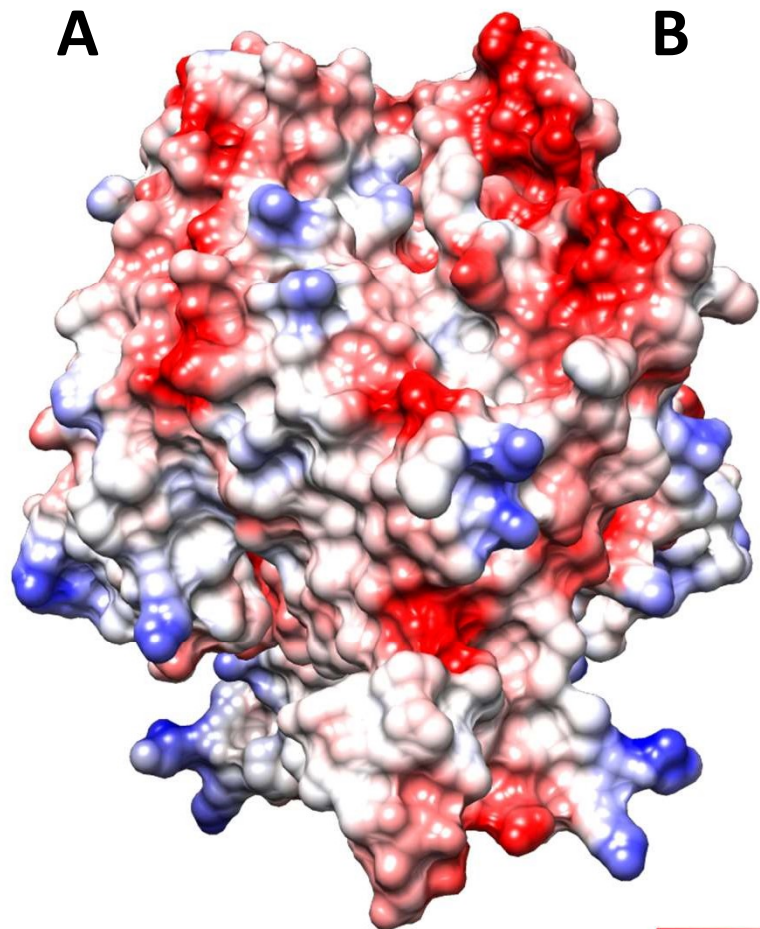


substrate
tunnel
entrance



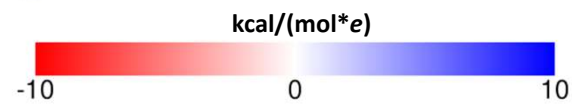
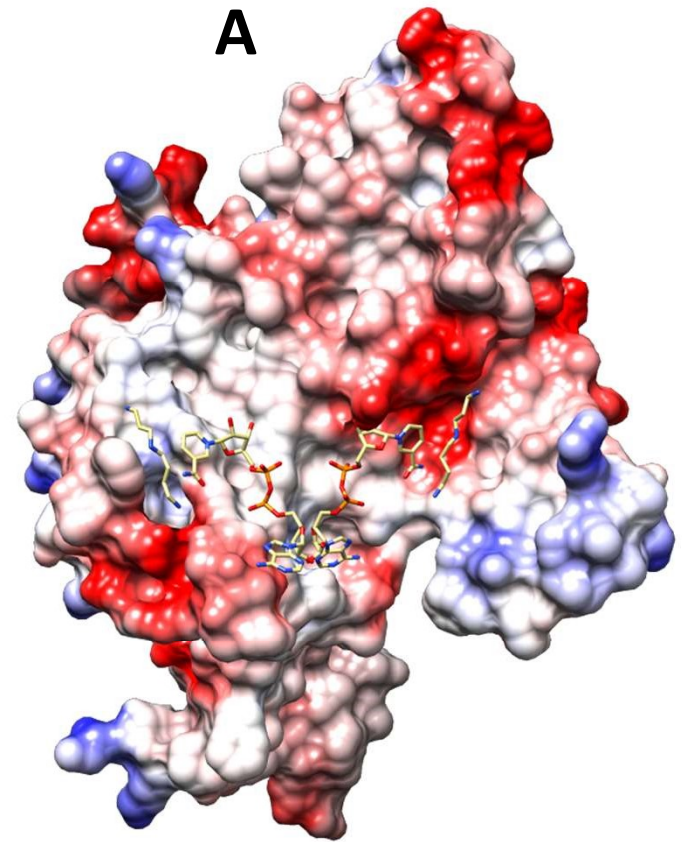
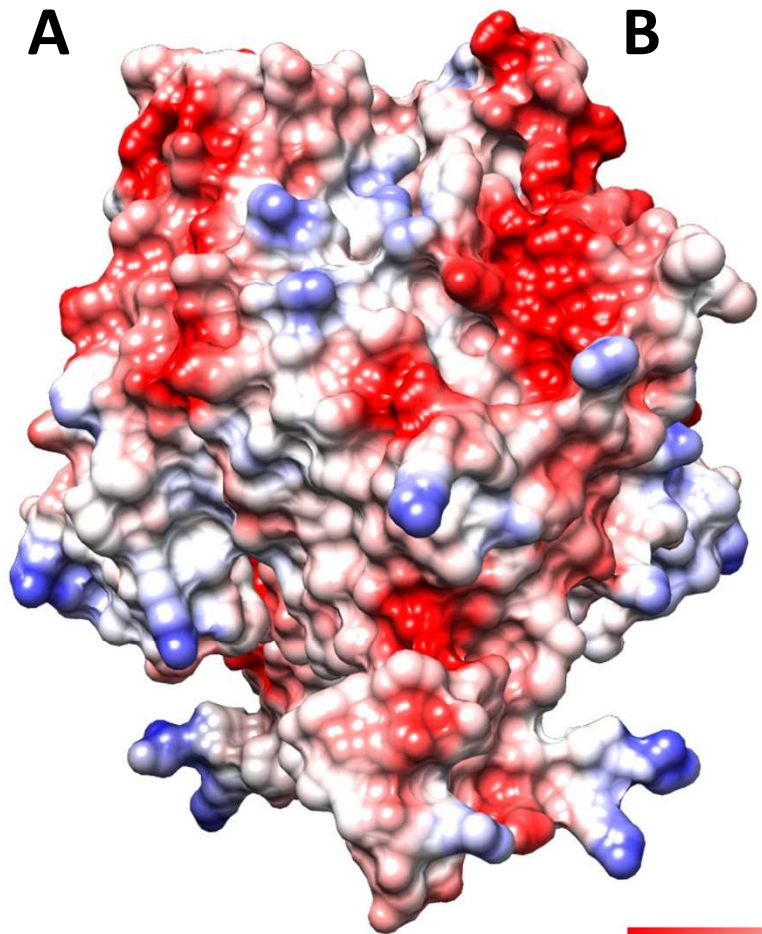
Ipomoea neei HSS

90°



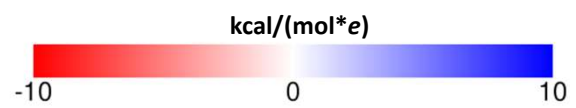
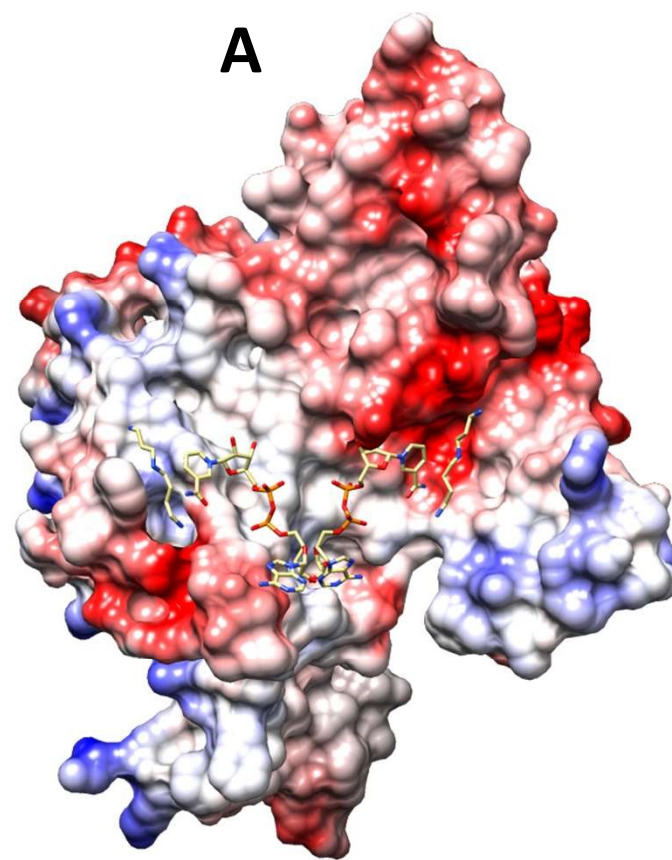
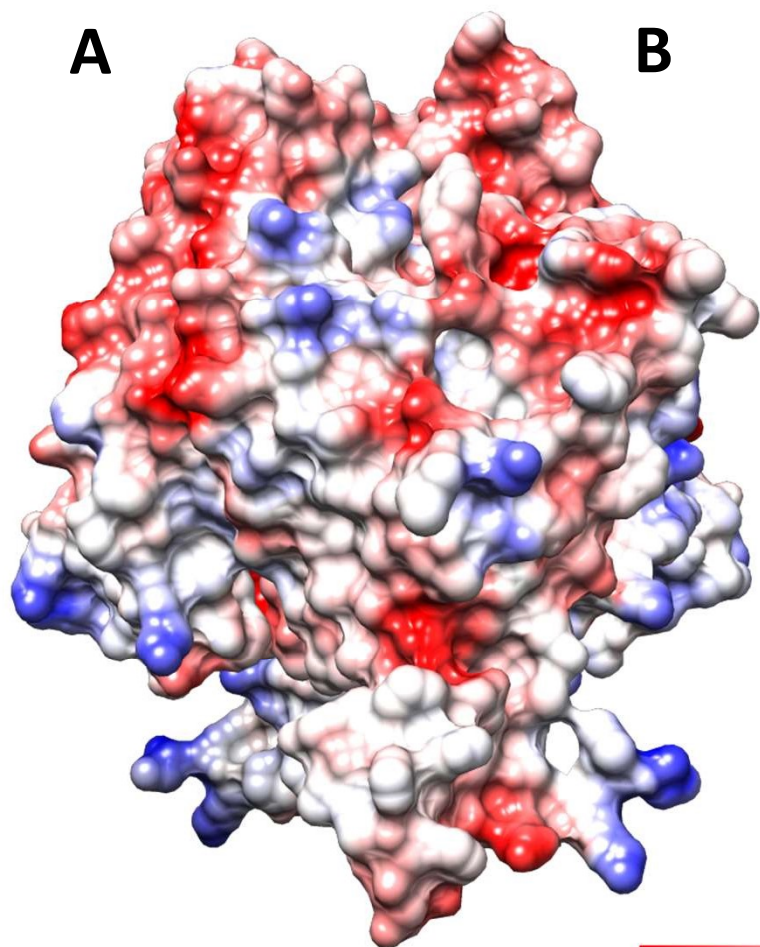
Ipomoea alba DHS

90°



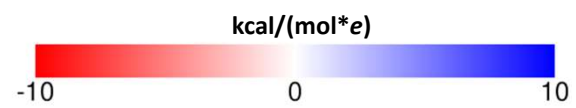
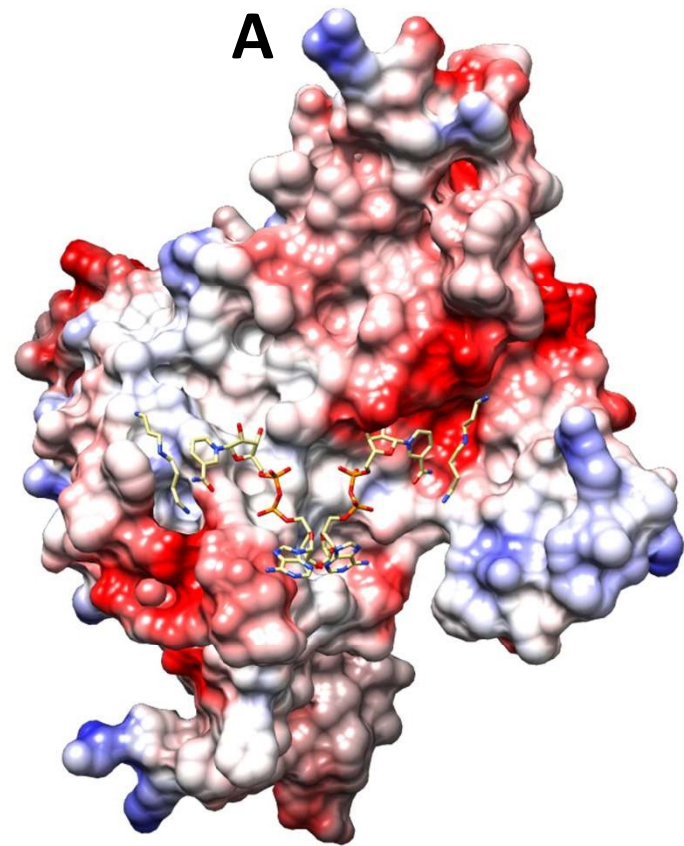
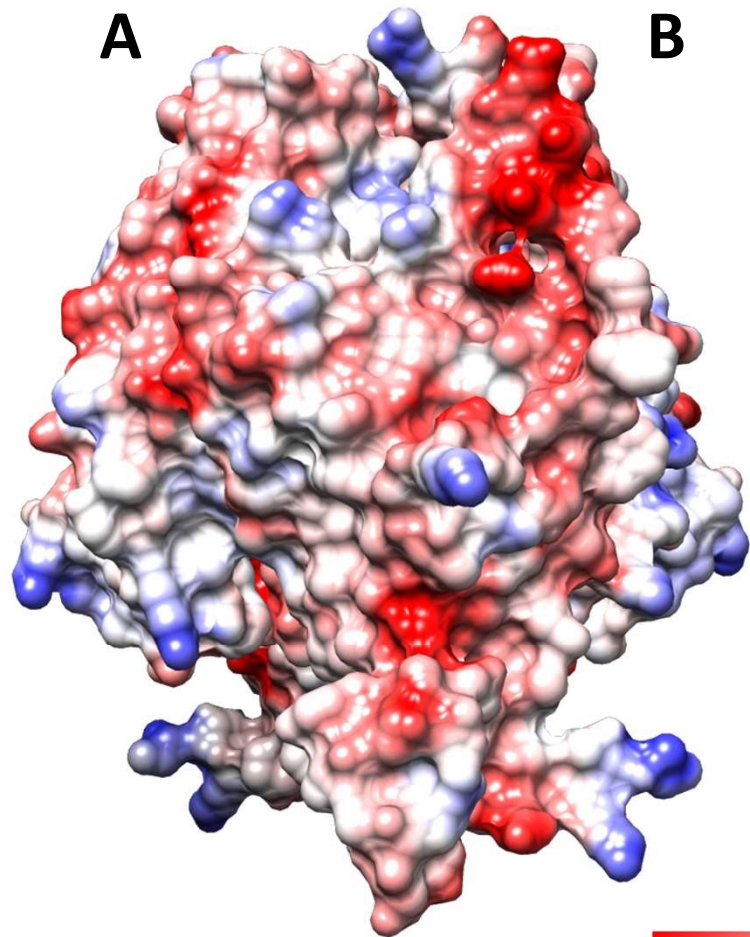
Ipomoea alba HSS

90°

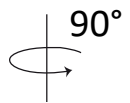


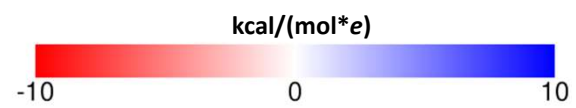
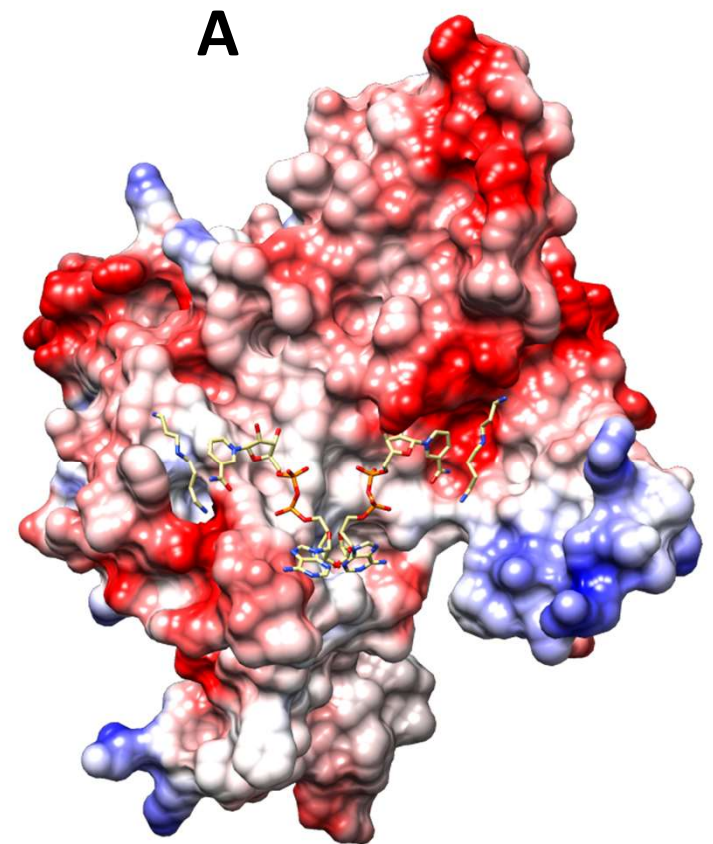
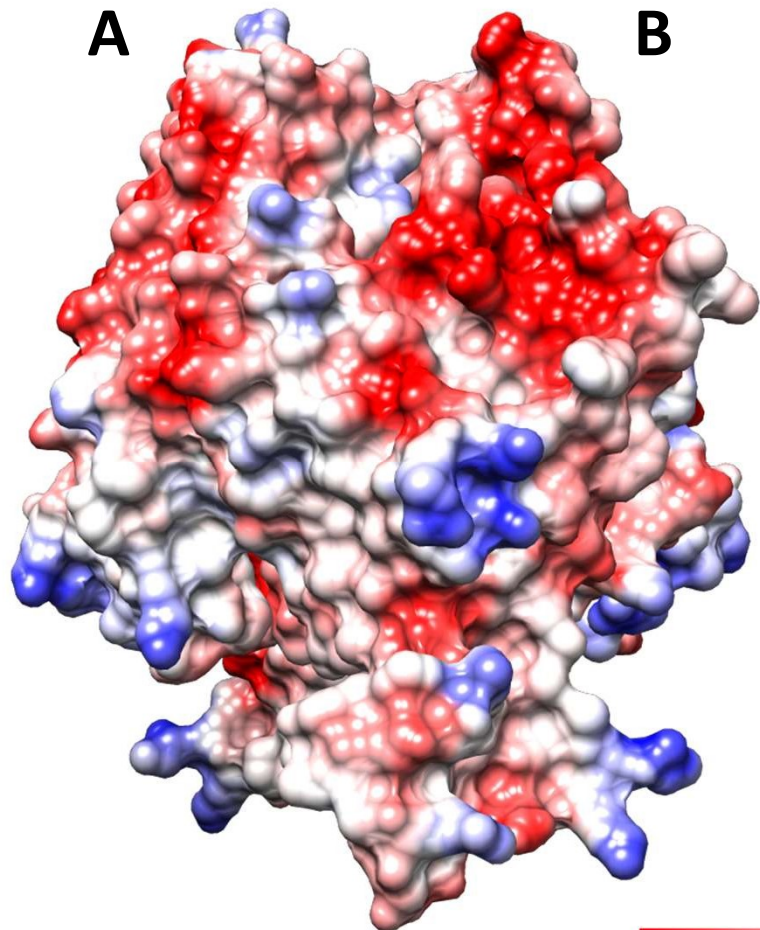
Camonea umbellata DHS

90°

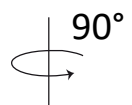


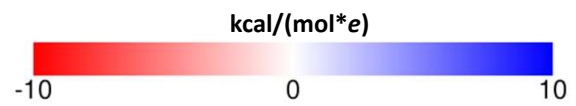
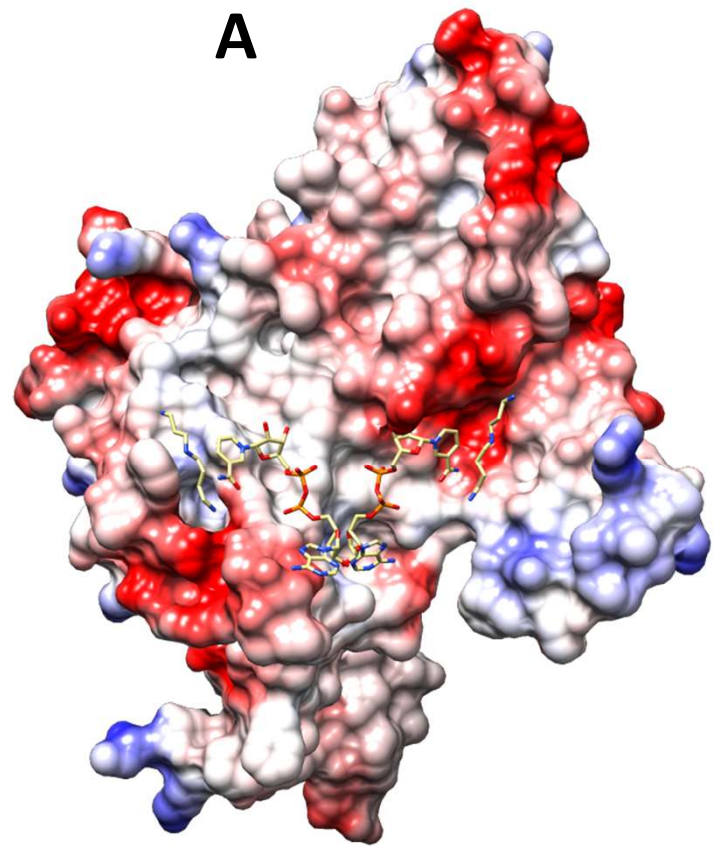
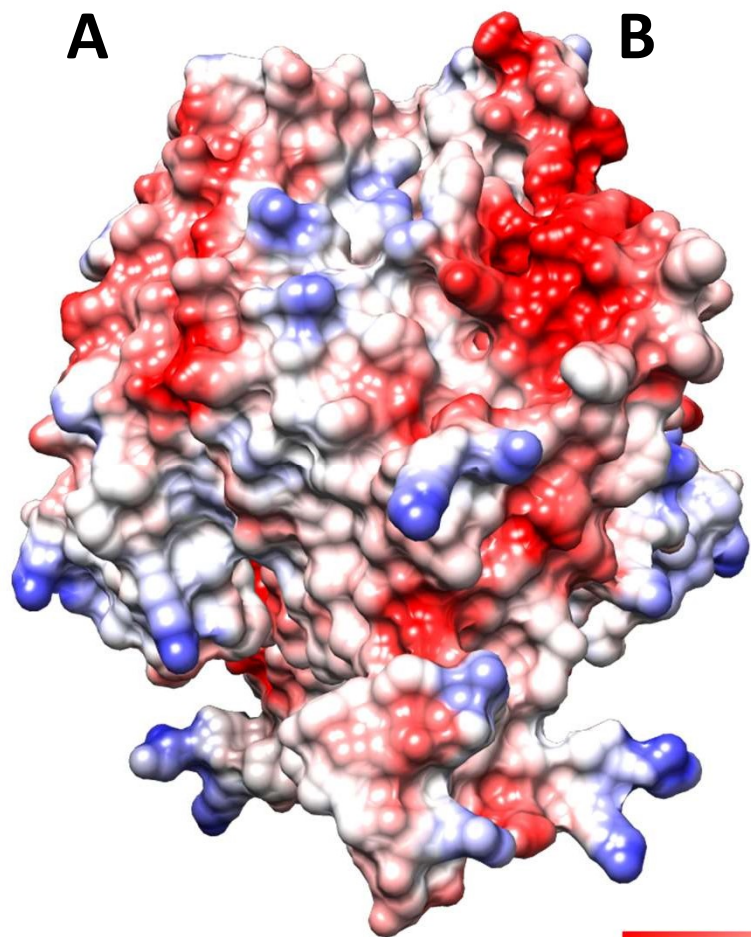
Camonea umbellata HSS

90°




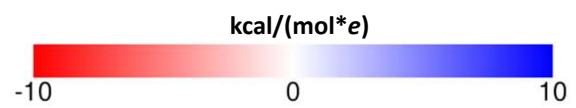
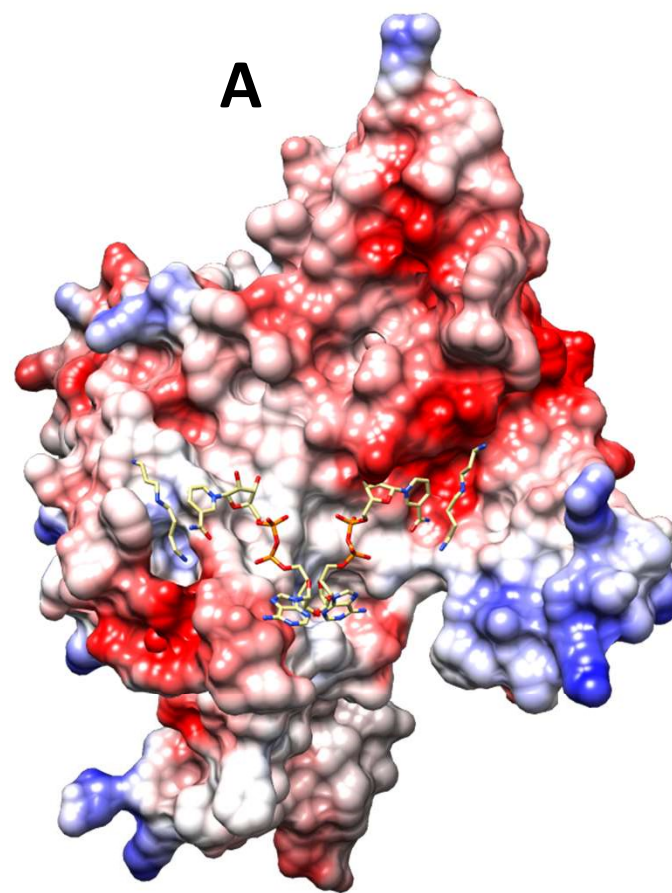
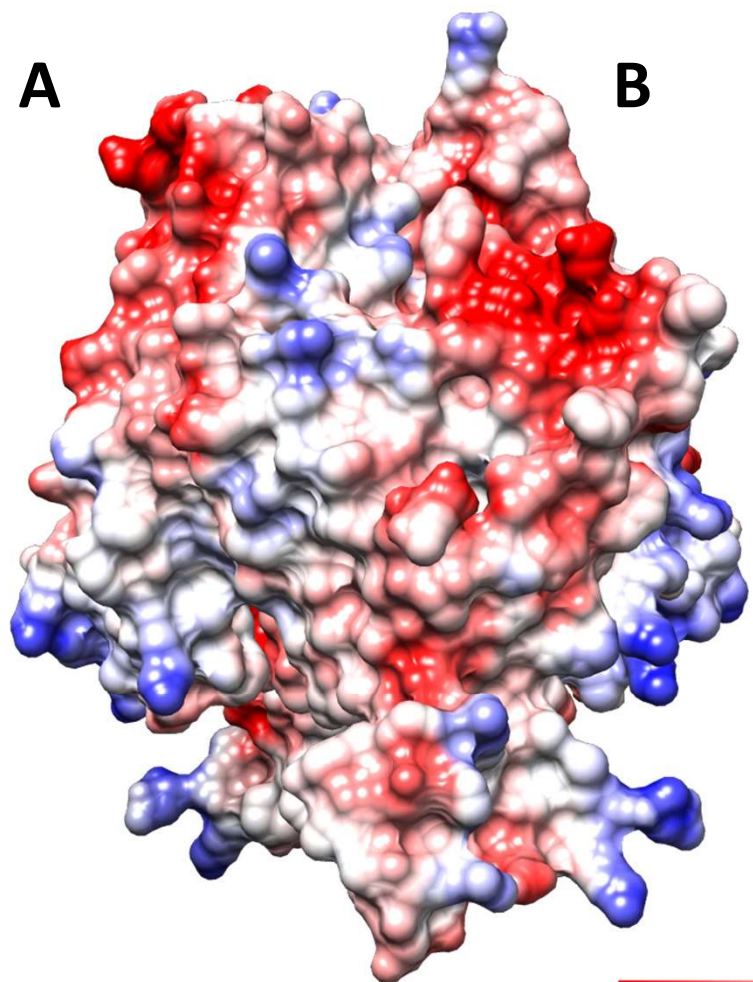
Distimake quinquefolius 1 DHS

90°




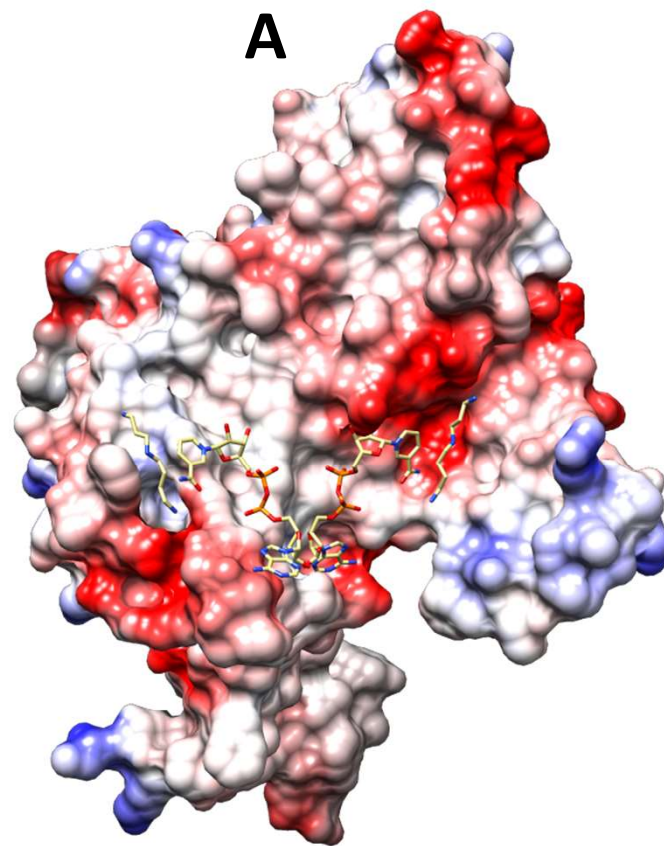
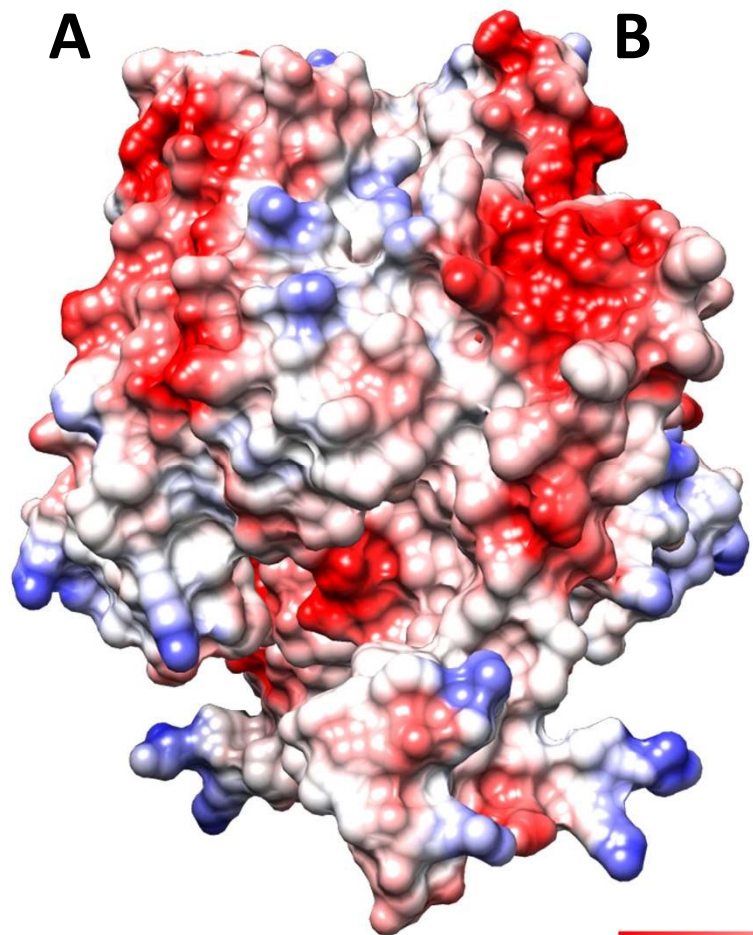
Distimake quinquefolius 1 HSS

90°



Distimake quinquefolius 2 DHS

90°



Distimake quinquefolius 2 HSS

90°

