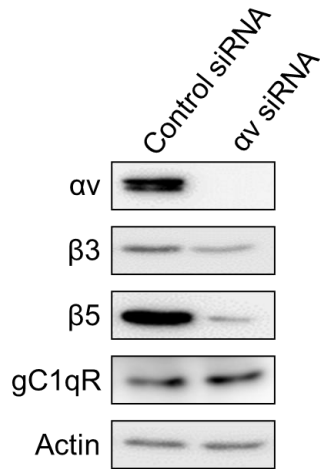
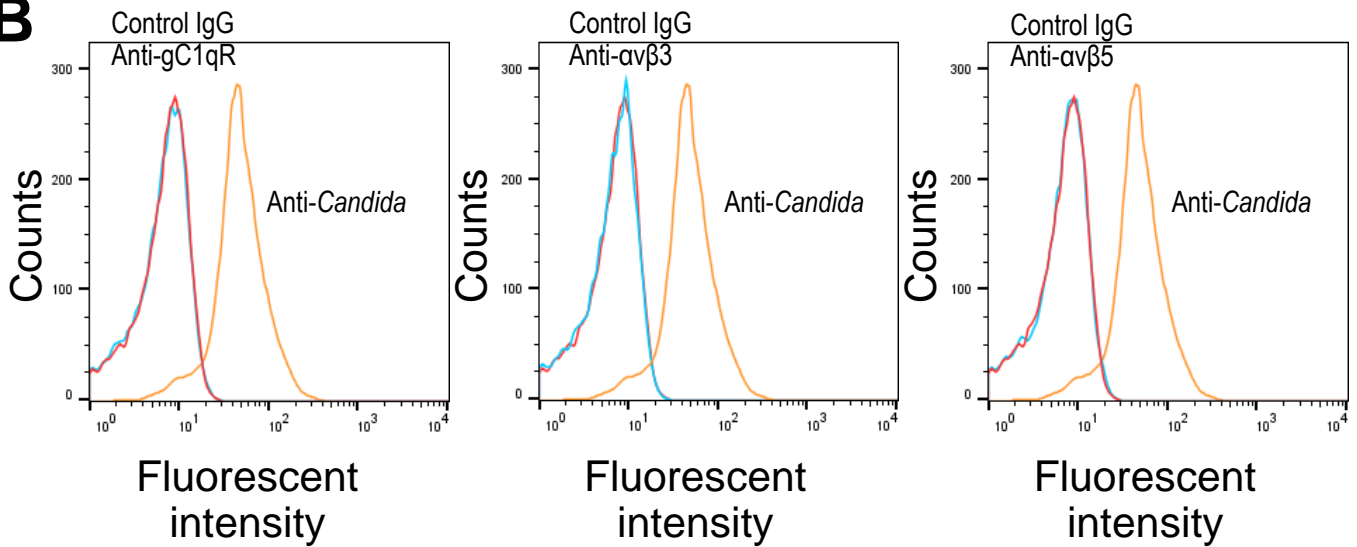


**A****B**

**Fig. S3.** (A) Western blot showing effects of integrin  $\alpha v$  siRNA on the levels of the indicated endothelial cell proteins. (B) Antibodies against gC1qR, integrin  $\alpha v\beta 3$ , and integrin  $\alpha v\beta 5$  do not bind to *C. glabrata*. Flow cytometric analysis of *C. glabrata* cells that were incubated with antibodies against gC1qR (clone 74.5.2), integrin  $\alpha v\beta 3$ , and integrin  $\alpha v\beta 5$ . They were also incubated with control IgG and with a polyclonal anti-*Candida* antibody. Each histogram shows the analysis of 10<sup>4</sup> cells.