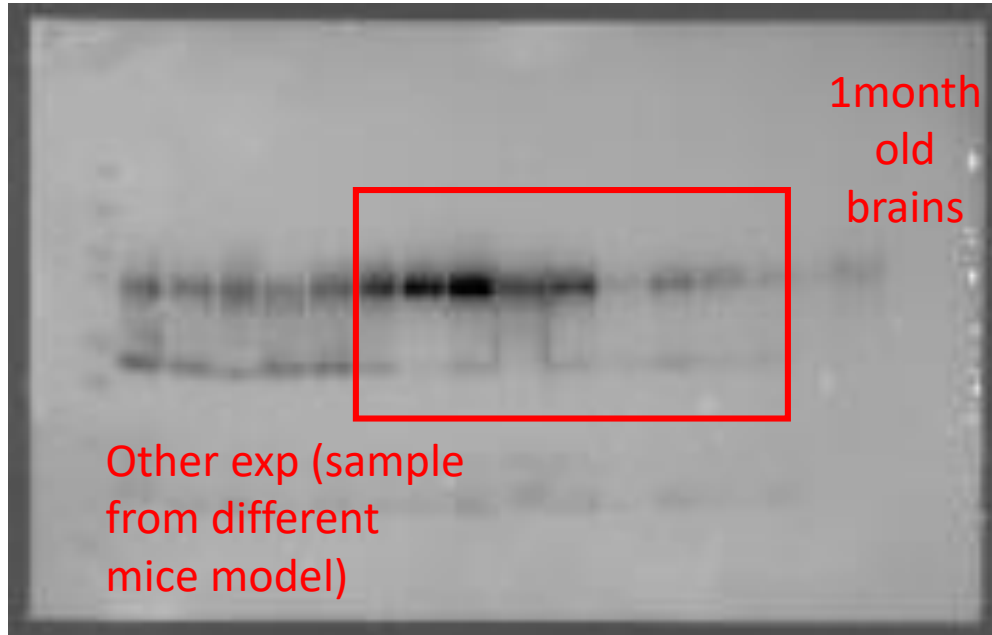
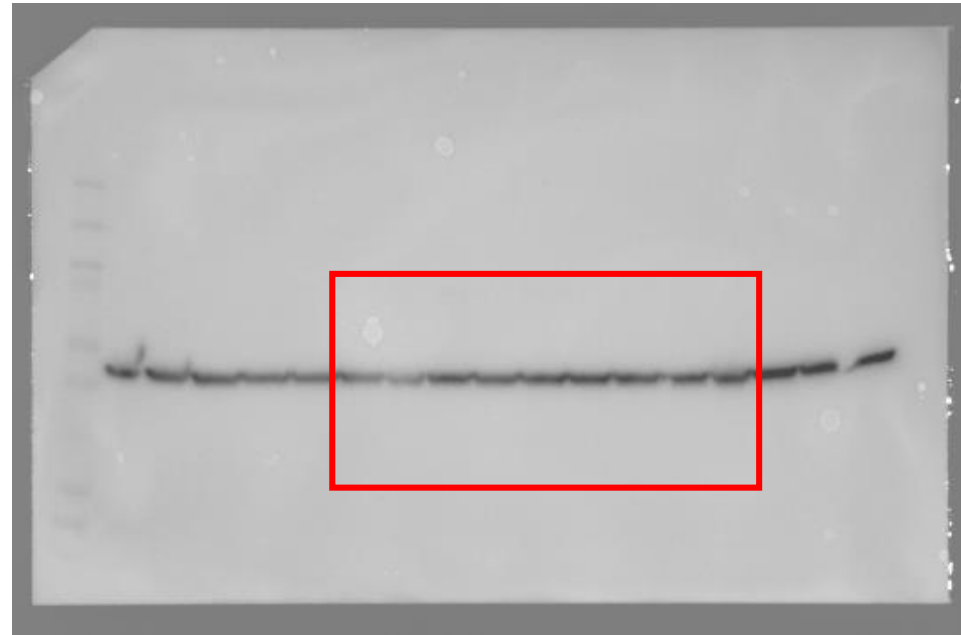


Midbrain mice lysates (Fig. 1b)

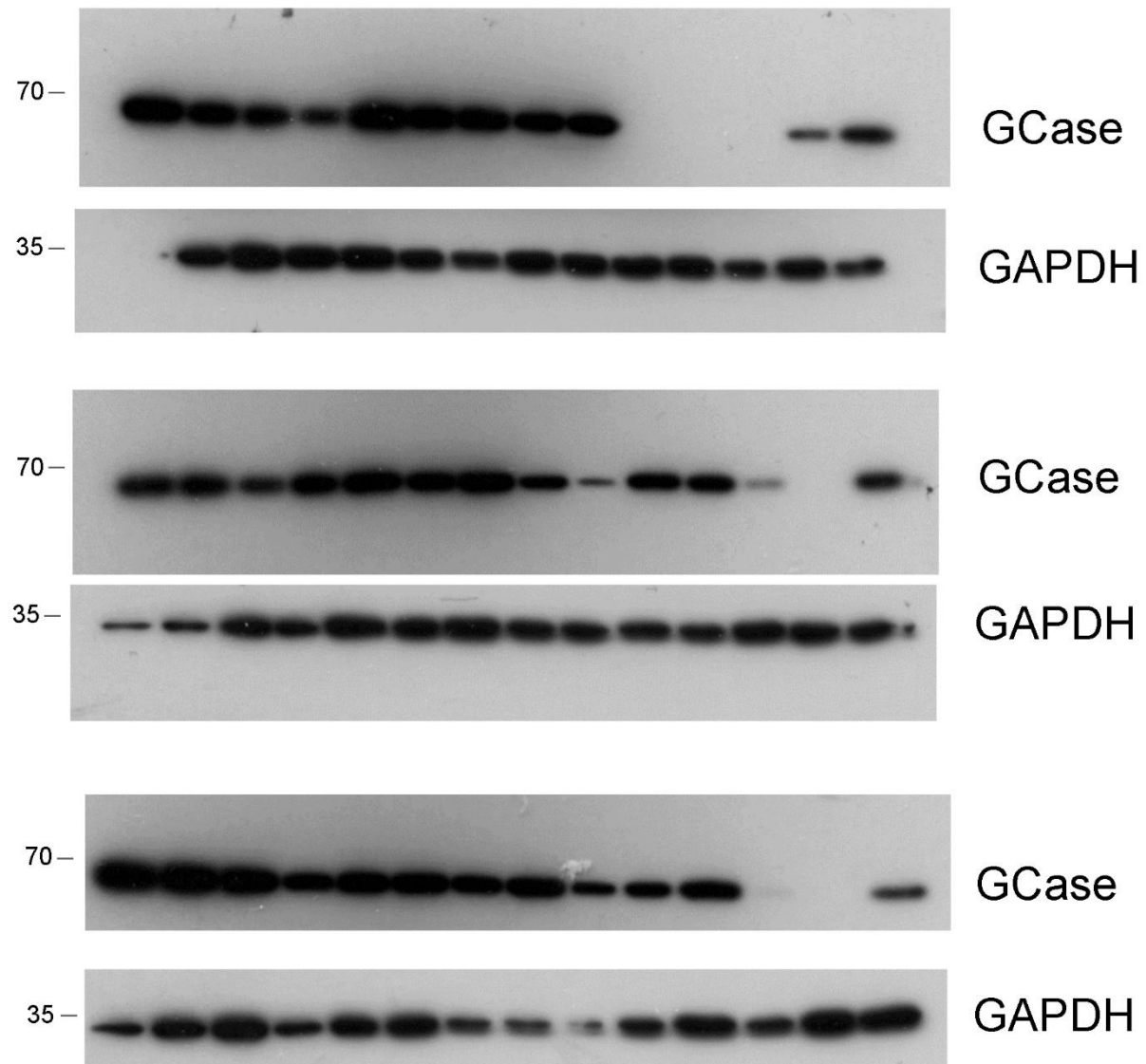


IB: GBA



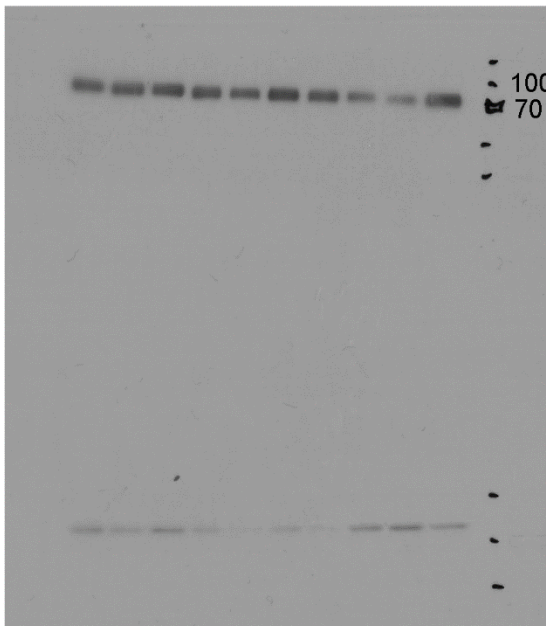
IB: actin

Human PBMCs (Fig. 2b)

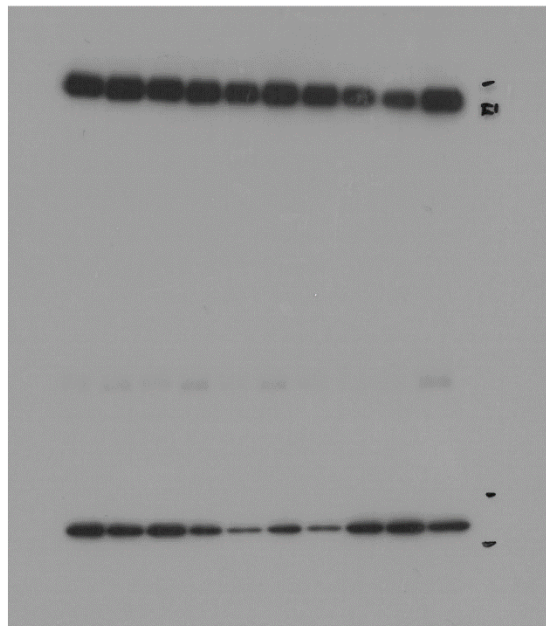


A. Human Fibroblasts (Fig. 3d)

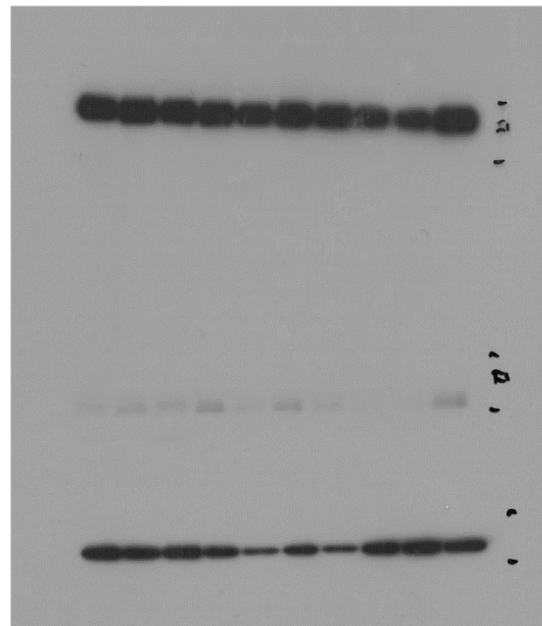
Exposure 1



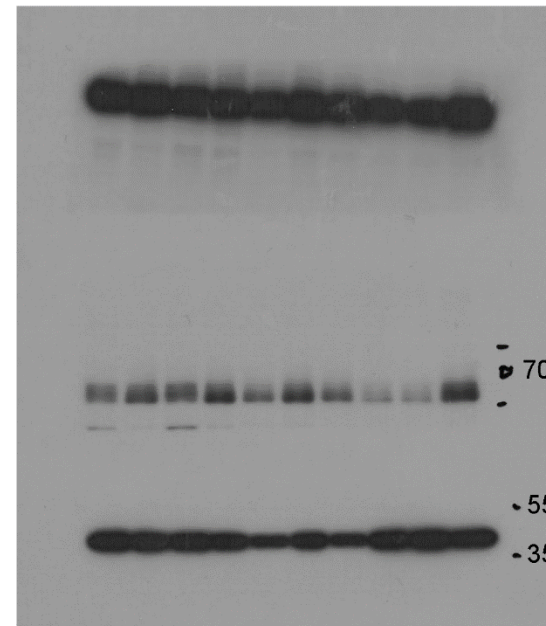
Exposure 2



Exposure 3



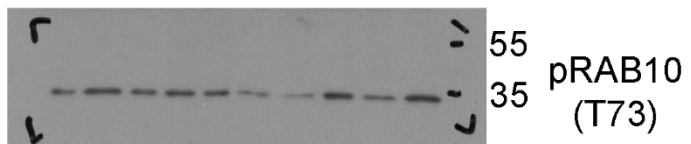
Exposure 4



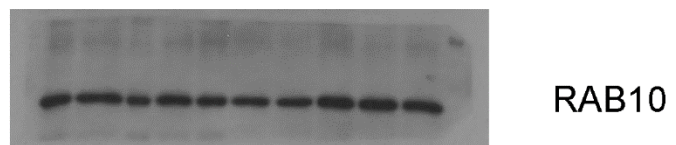
LIMP2

GCCase

GAPDH



pRAB10
(T73)



RAB10

iPSC-derived neurons lysates (Fig. 4e)

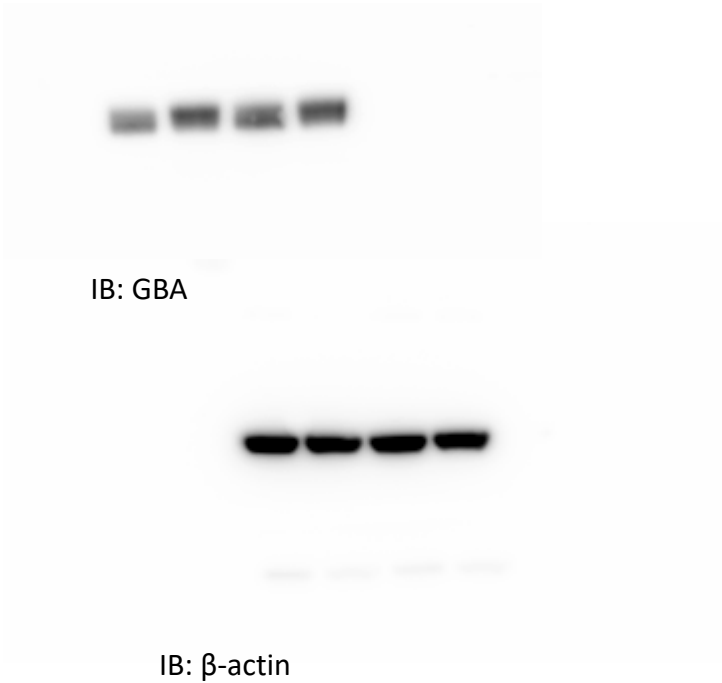
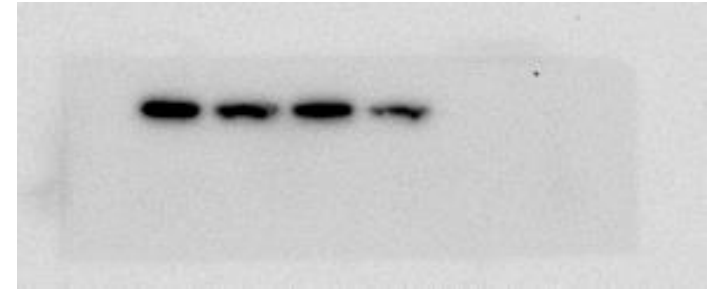
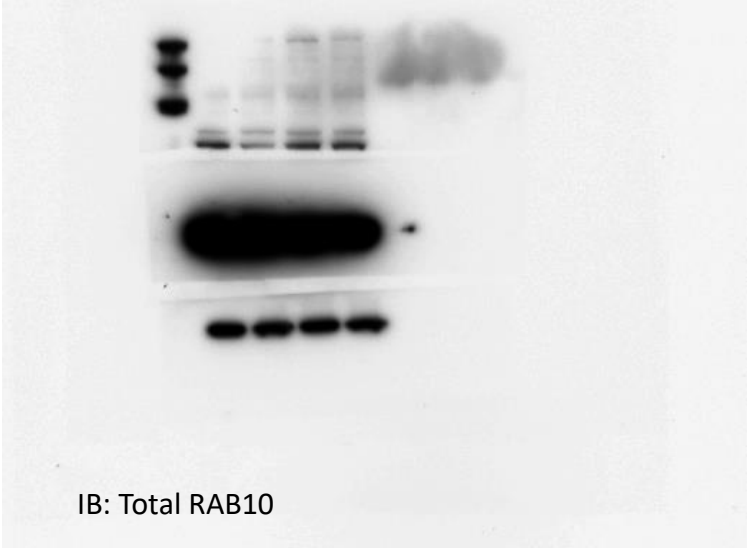
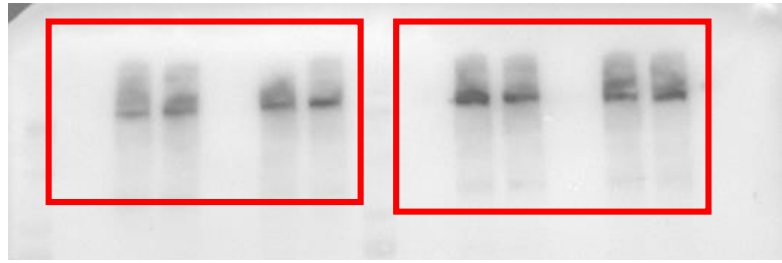
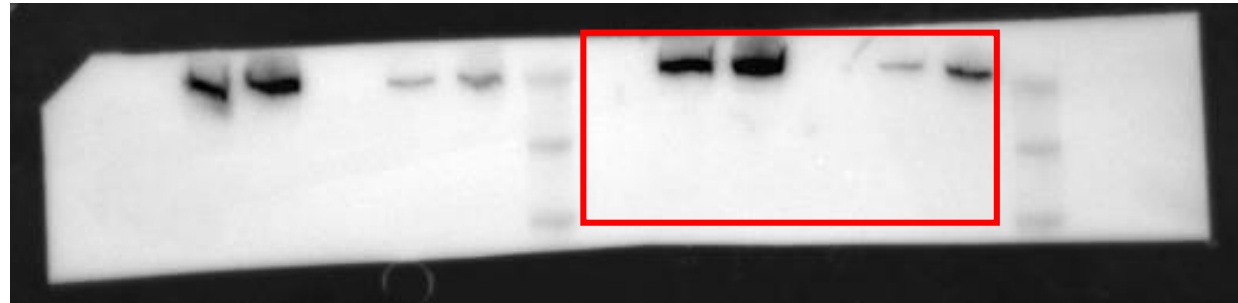
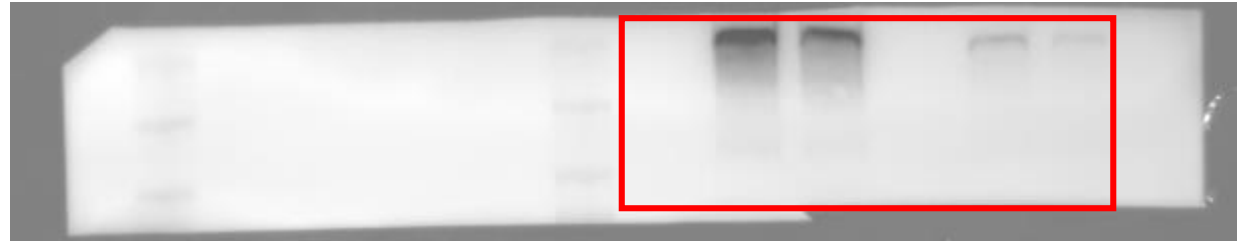
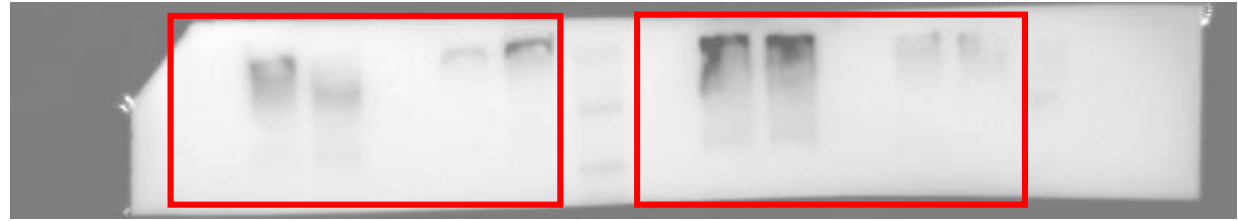


Figure 5a: HEK293T overexpressing LRRK2 and treated with MLI-2



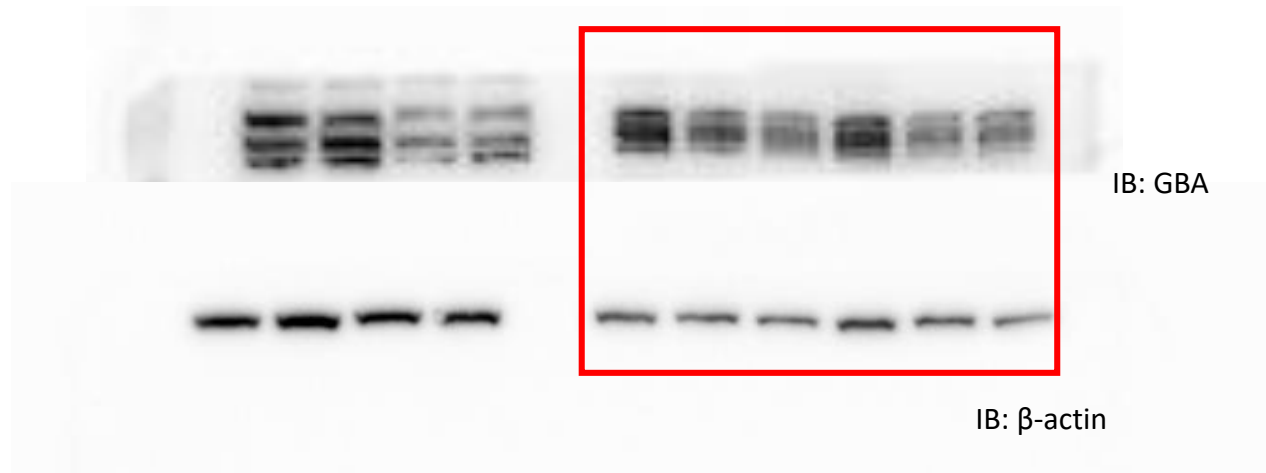
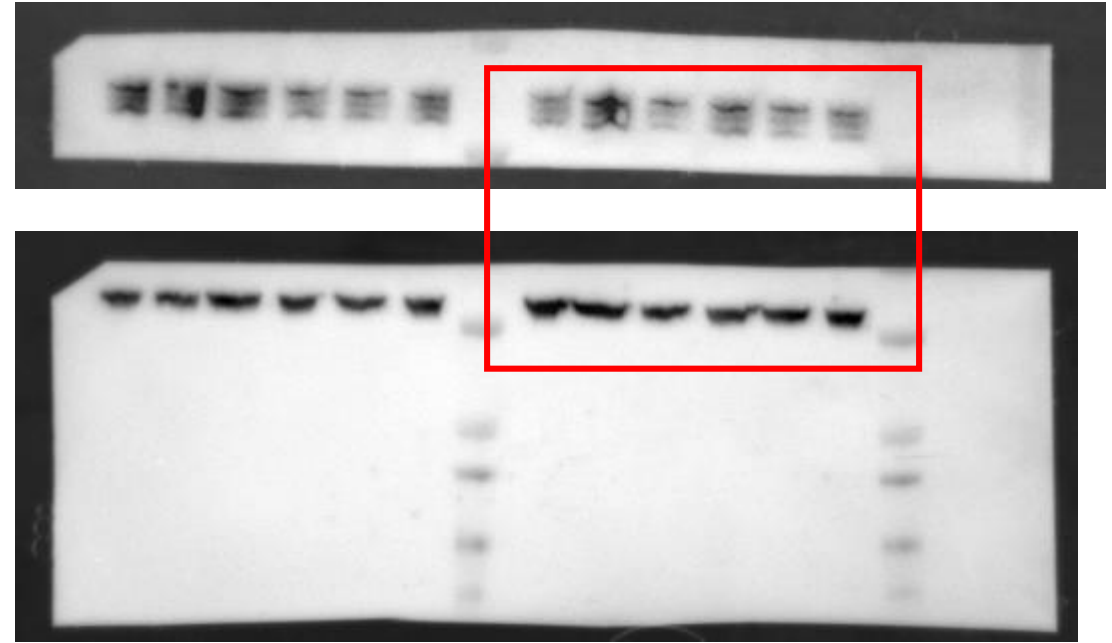
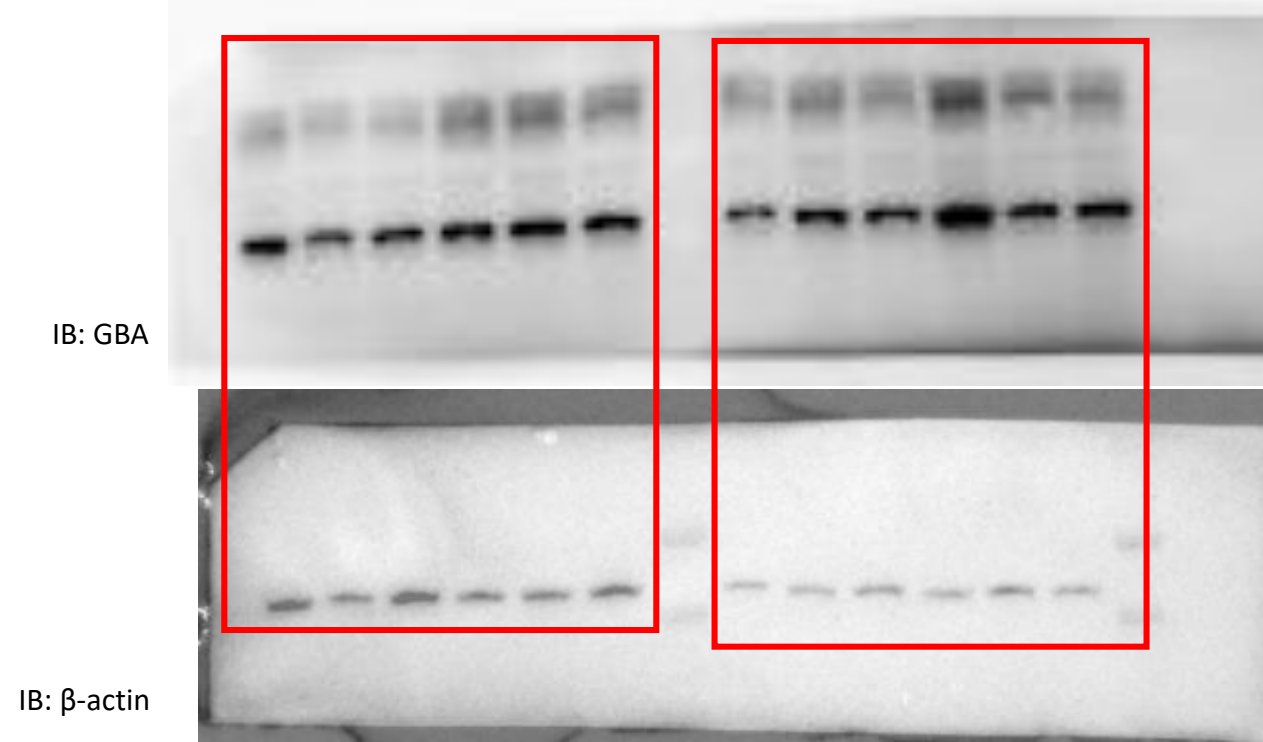
IB: flag



IB: pSer935 LRRK2

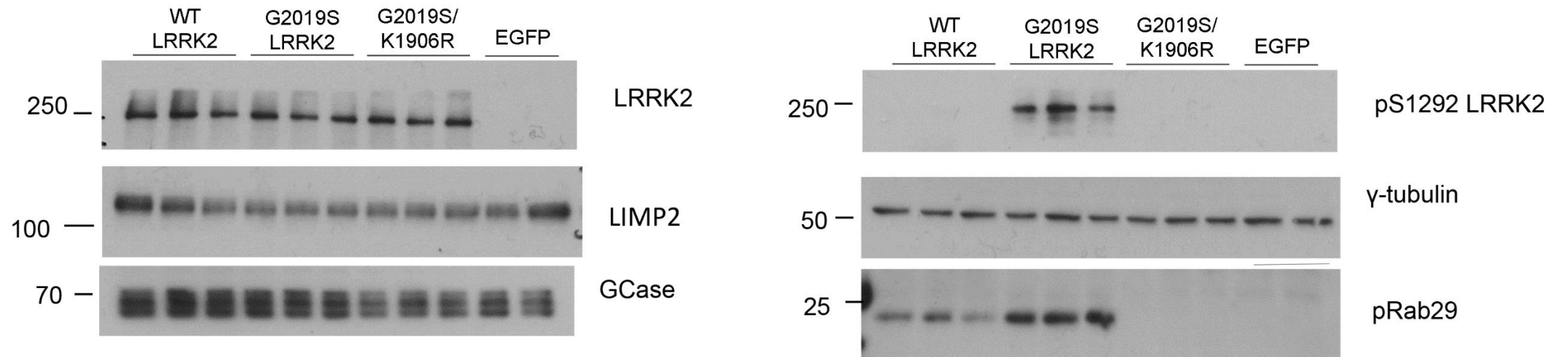
All blots were loaded in the same order as in the manuscript

Figure 5a: HEK293T overexpressing LRRK2 and treated with MLI-2 (GBA and actin)

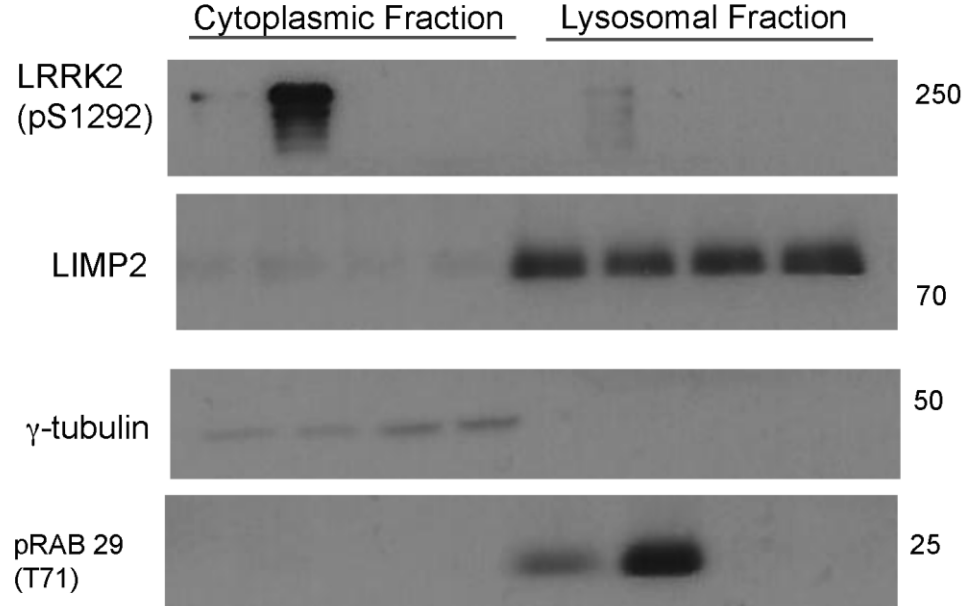
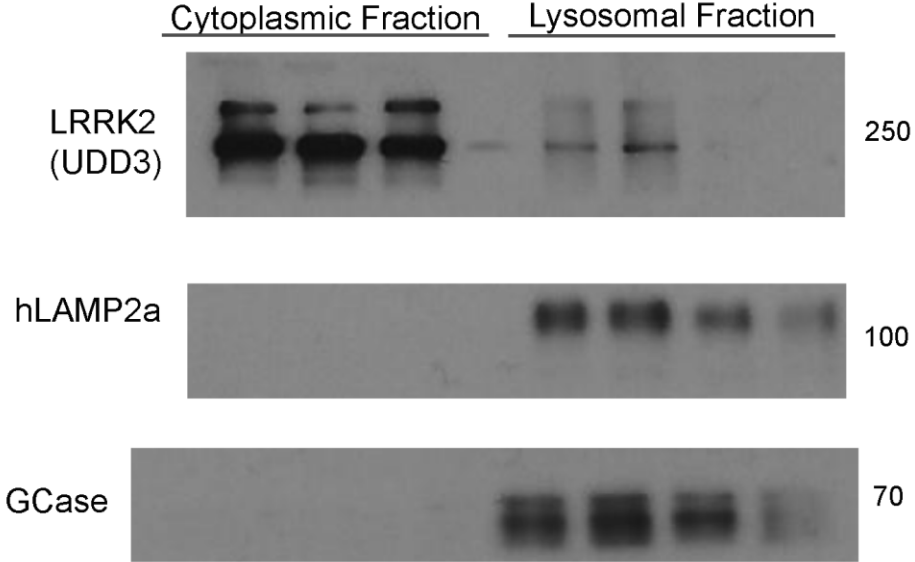


All blots were loaded in the same order as in the manuscript

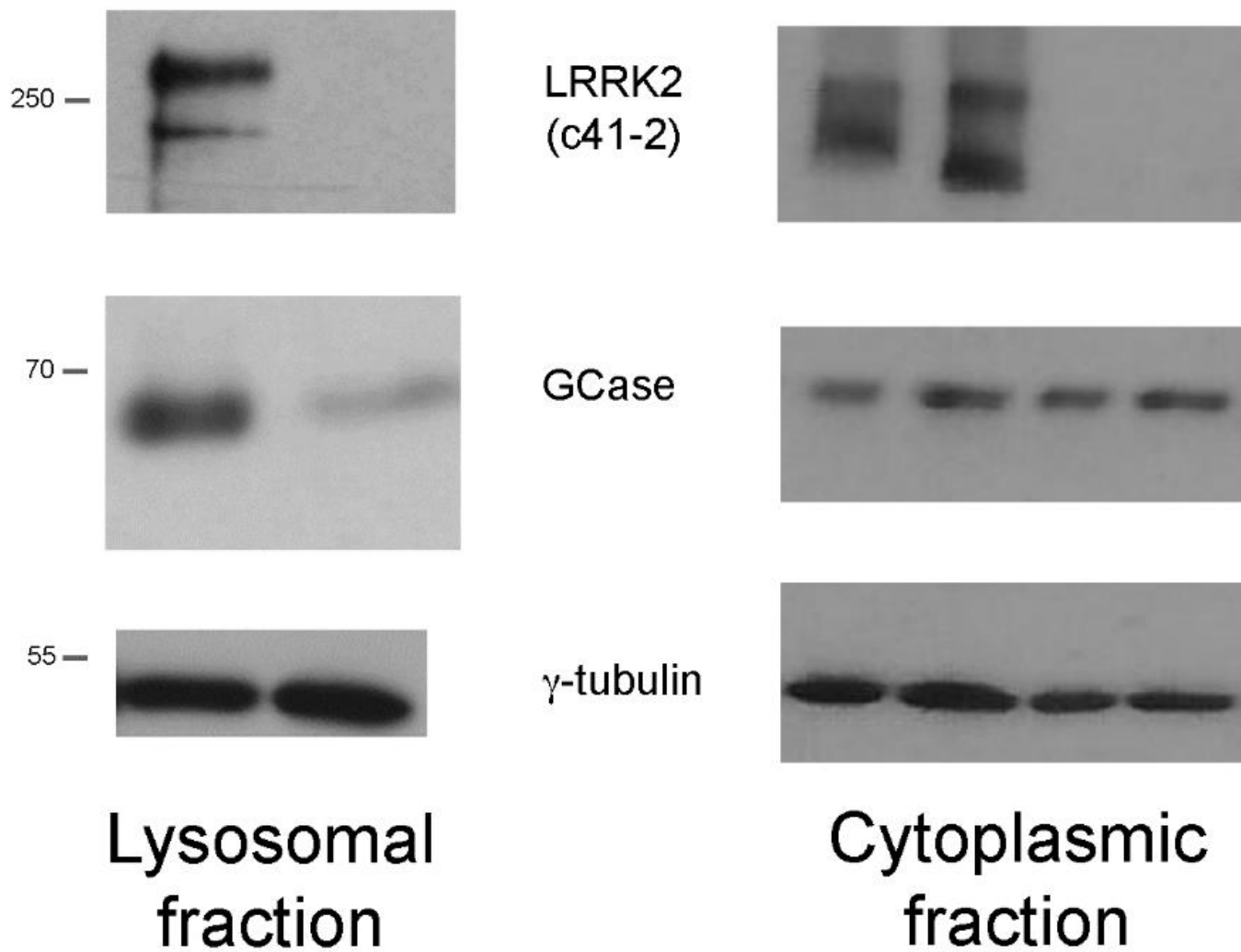
Human HEK293T (Fig. 5c; whole cell extracts)



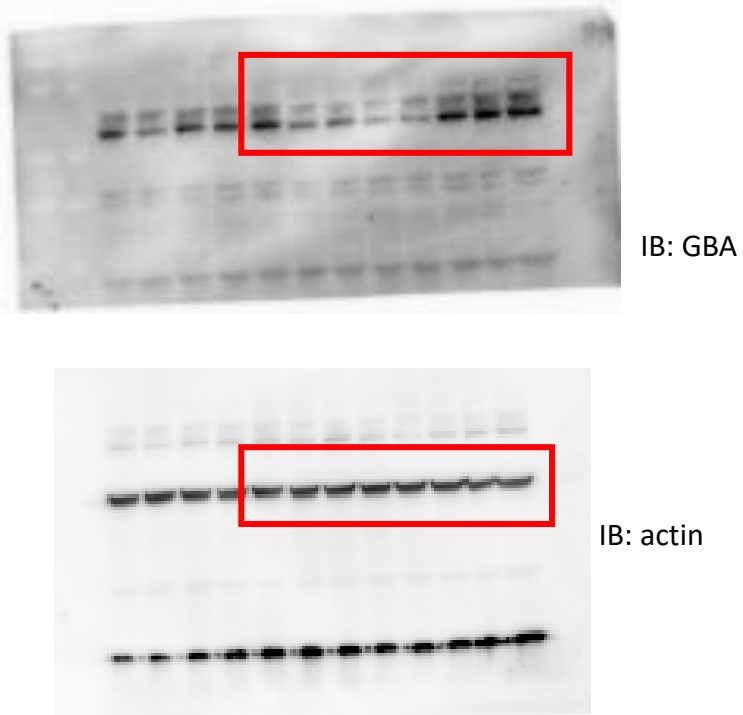
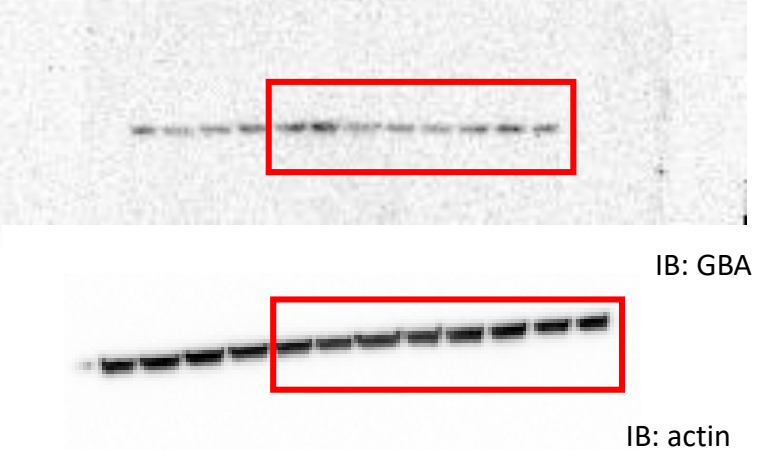
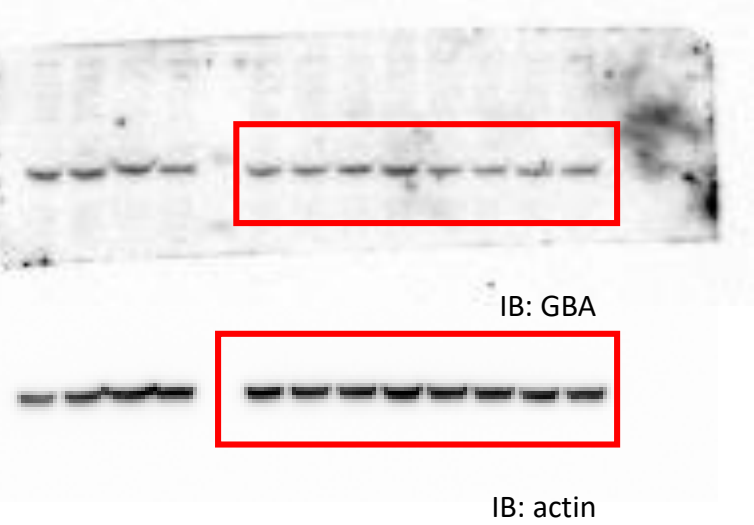
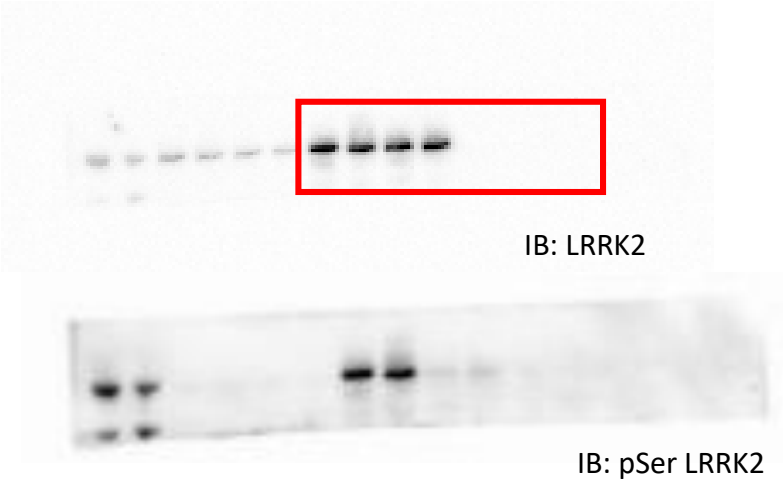
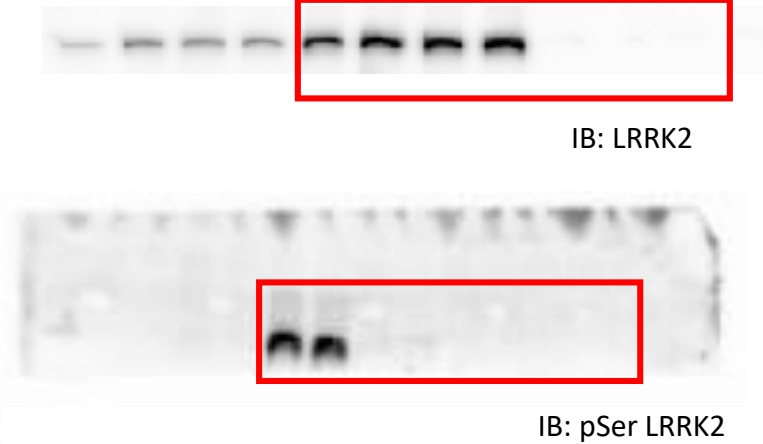
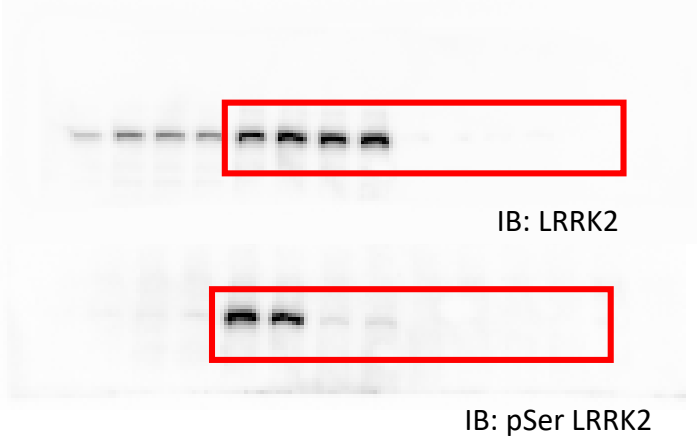
Human HEK293T cells (Fig. 5d)



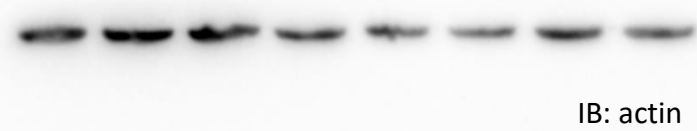
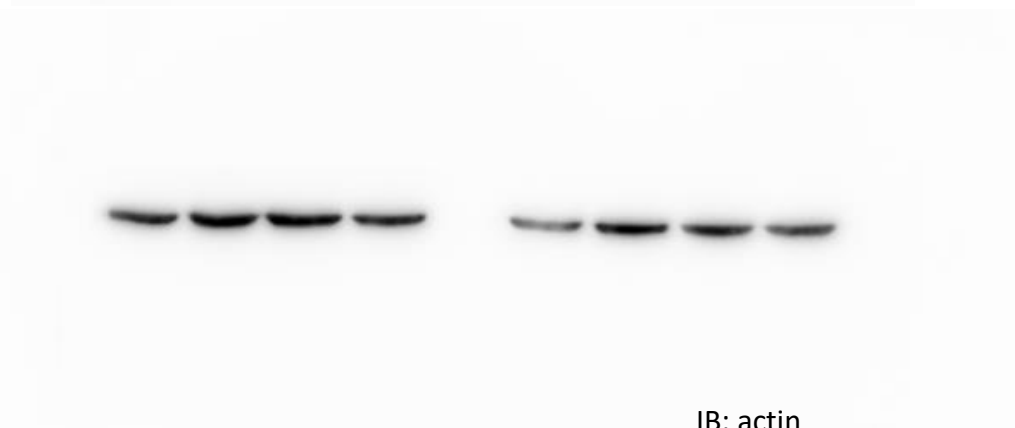
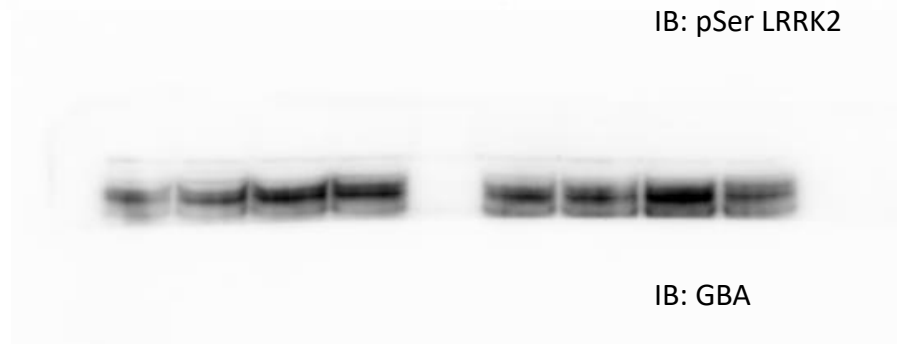
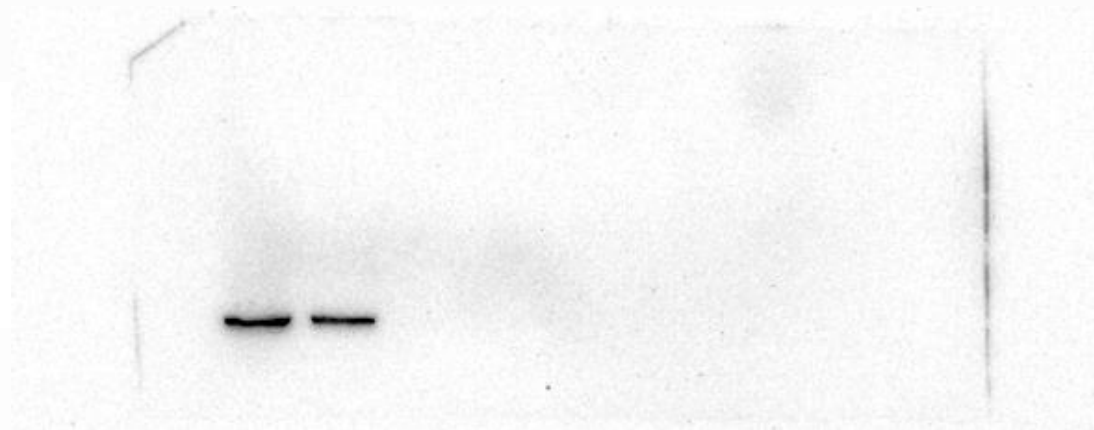
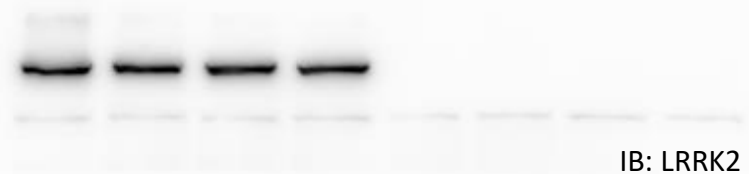
A. RAW264.7 macrophages (Fig. 6a)



Raw WT and KO LRRK2 (Fig. 6b)



All blots were loaded in the same order as in the manuscript



All blots were loaded in the same order