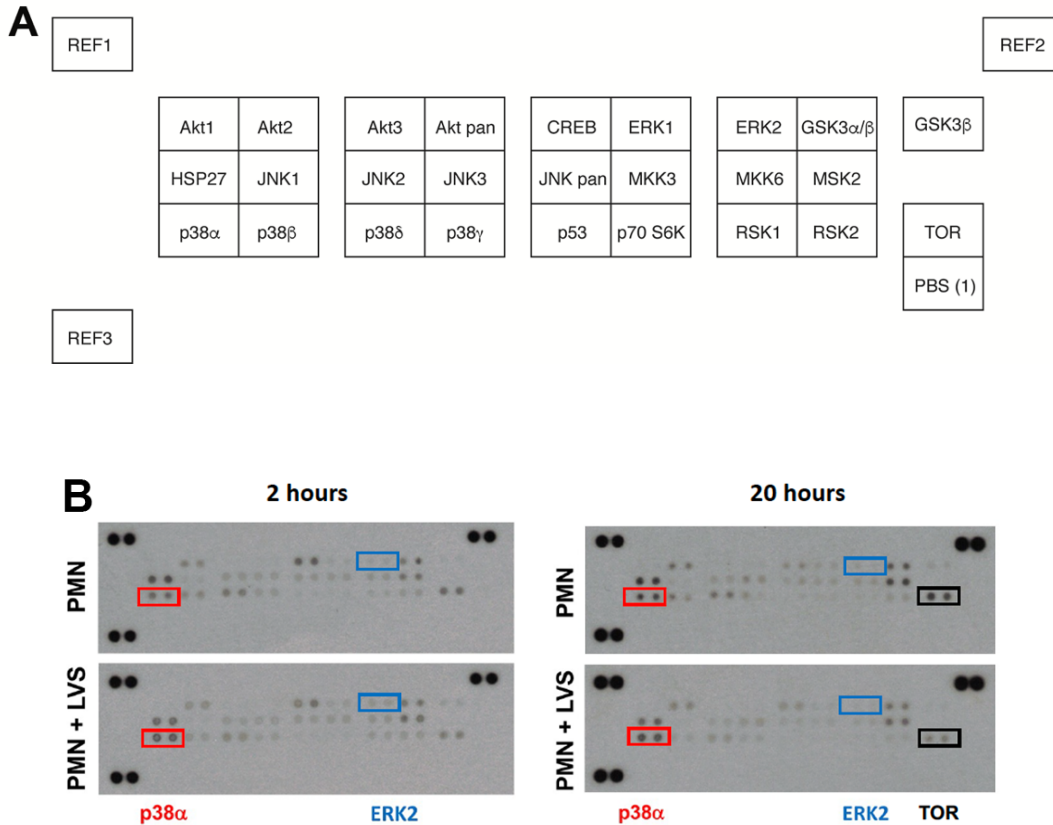
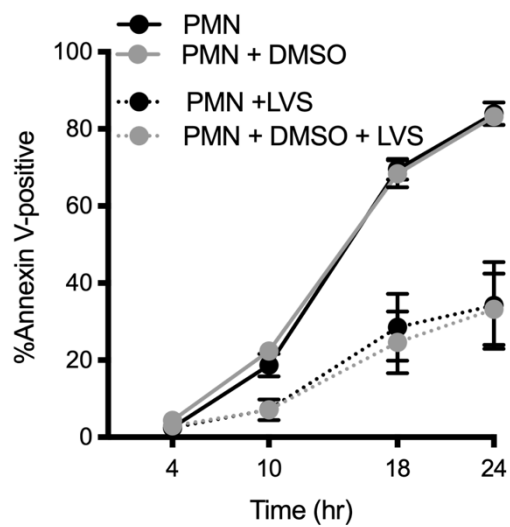


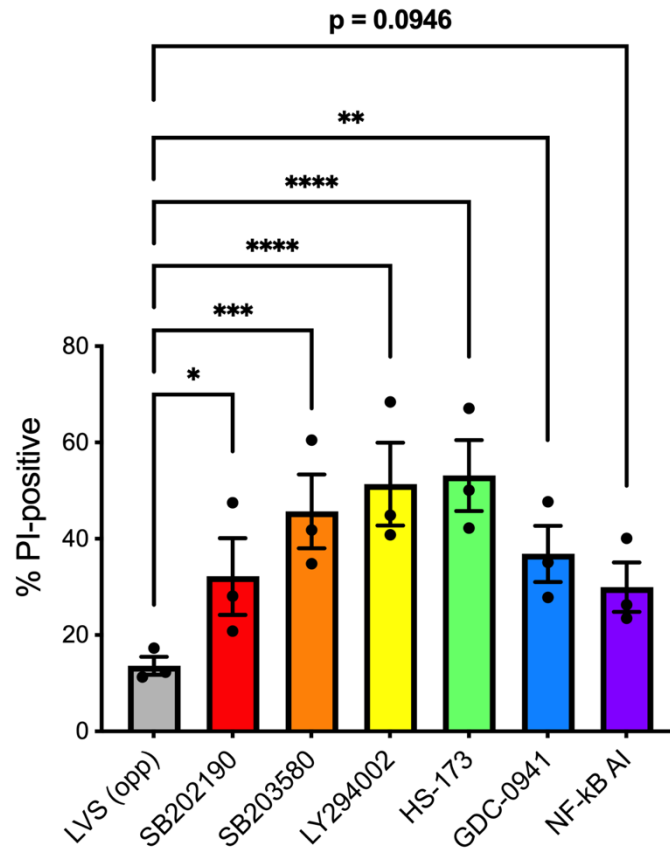
Supplementary Figures for Kinkead et al.



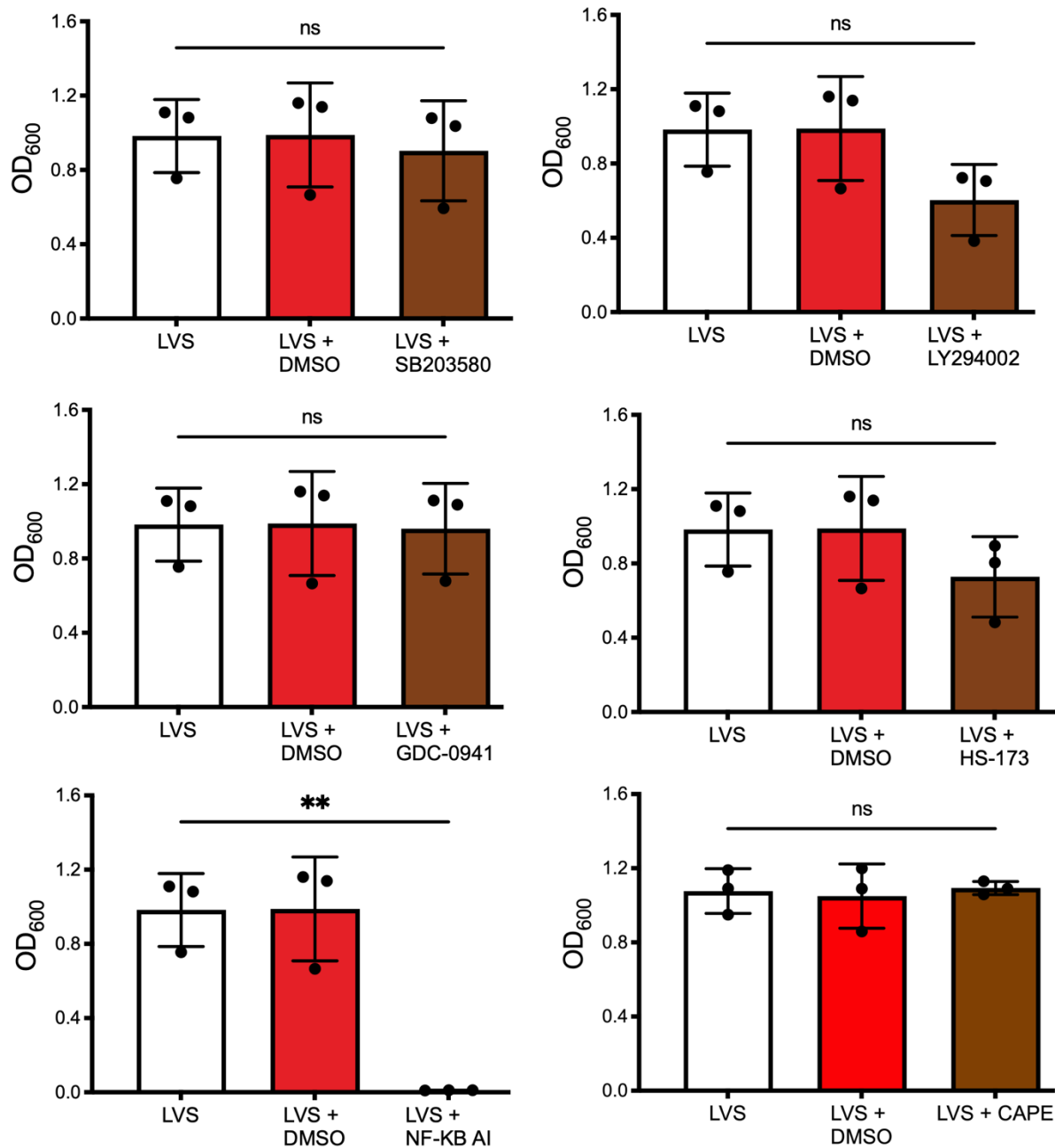
**Supplementary Figure 1. Phospho-MAPK Dot Blots.** (A) Spot map for R&D Systems human phospho-MAPK dot blot slide arrays. Each box contains two spots. Corner spots are positive (REF1-3) and negative (lower right) controls. (B) Dot blots were probed with lysates of control and infected cells prepared at 2 and 20 hours, as indicated. LVS infection did not enhance phosphorylation of p38 $\alpha$  or ERK2 at these time points. TOR phosphorylation appeared slightly more abundant in uninfected cells at 20 hour. Representative of three determinations.



**Supplementary Figure 2. DMSO does not alter the kinetics of neutrophil apoptosis.** Control and LVS-infected neutrophils were incubated in medium with and without DMSO as the diluent control for the indicated amounts of time prior to analysis by Annexin V-FITC/Propidium Iodide co-staining and flow cytometry. Data show the percentage of Annexin V-FITC-positive cells at each time point and are the mean  $\pm$  standard error of the mean (n=3). Where not visible, error bars are smaller than symbols.



**Supplementary Figure 3. Effects of signaling inhibitors on neutrophil viability in Transwells.** Neutrophils and bacteria were added to the bottom and top chambers of Transwells containing a 0.4  $\mu\text{m}$  pore filter supports, respectively. Inhibitors or medium alone were added, as indicated. After 24 hours at 37°C, neutrophils were collected, stained with propidium iodide (PI) and analyzed by flow cytometry. The percentage of PI-positive cells is shown as the mean  $\pm$  standard error of the mean (n=3). \* $p$ <0.05, \*\* $p$ <0.01, \*\*\* $p$ <0.001, as indicated. ‘Opp’ indicates that LVS were incubated on the opposite side of the Transwell from the neutrophils in the absence of inhibitors.



**Supplementary Figure 4. Effects of signaling inhibitors on bacterial growth in broth.** *F. tularensis* LVS was grown overnight at 37°C with shaking at 200 rpm in brain heart infusion broth in the absence or presence of SB203580, LY294002, GDC-0941, HS-173, NF-κB AI, CAPE or the DMSO diluent, as indicated. Growth was monitored by measurement of the OD<sub>600</sub>. Data for the 16 hour time point are shown as the mean ± standard error of the mean (n=3). ns, not significant. \*\* $p < 0.01$ .