

Circulating tumor DNA for prognosis assessment and postoperative management after curative-intent resection of colorectal liver metastases

Thomas Reinert(PhD)*, Lena Marie Skindhøj Petersen(MSc)*, Tenna Vesterman Henriksen(MSc), Marie Øbo Larsen(MD), Mads Heilskov Rasmussen(PhD), Amanda Frydendahl Boll Johansen(MSc), Nadia Øgaard(MSc), Michael Knudsen(PhD), Iver Nordentoft(PhD), Søren Vang(PhD), Søren Rasmus Palmelund Krag(MD), Anders Riegels Knudsen(MD), Frank Viborg Mortensen(MD), Claus Lindbjerg Andersen(PhD)**

*These authors contributed equally.

**Corresponding author.

Table of content (Supplementary content)

Supplementary Tabela S1 to S8 (Available in separate Excel file)

Supplementary Figure S1

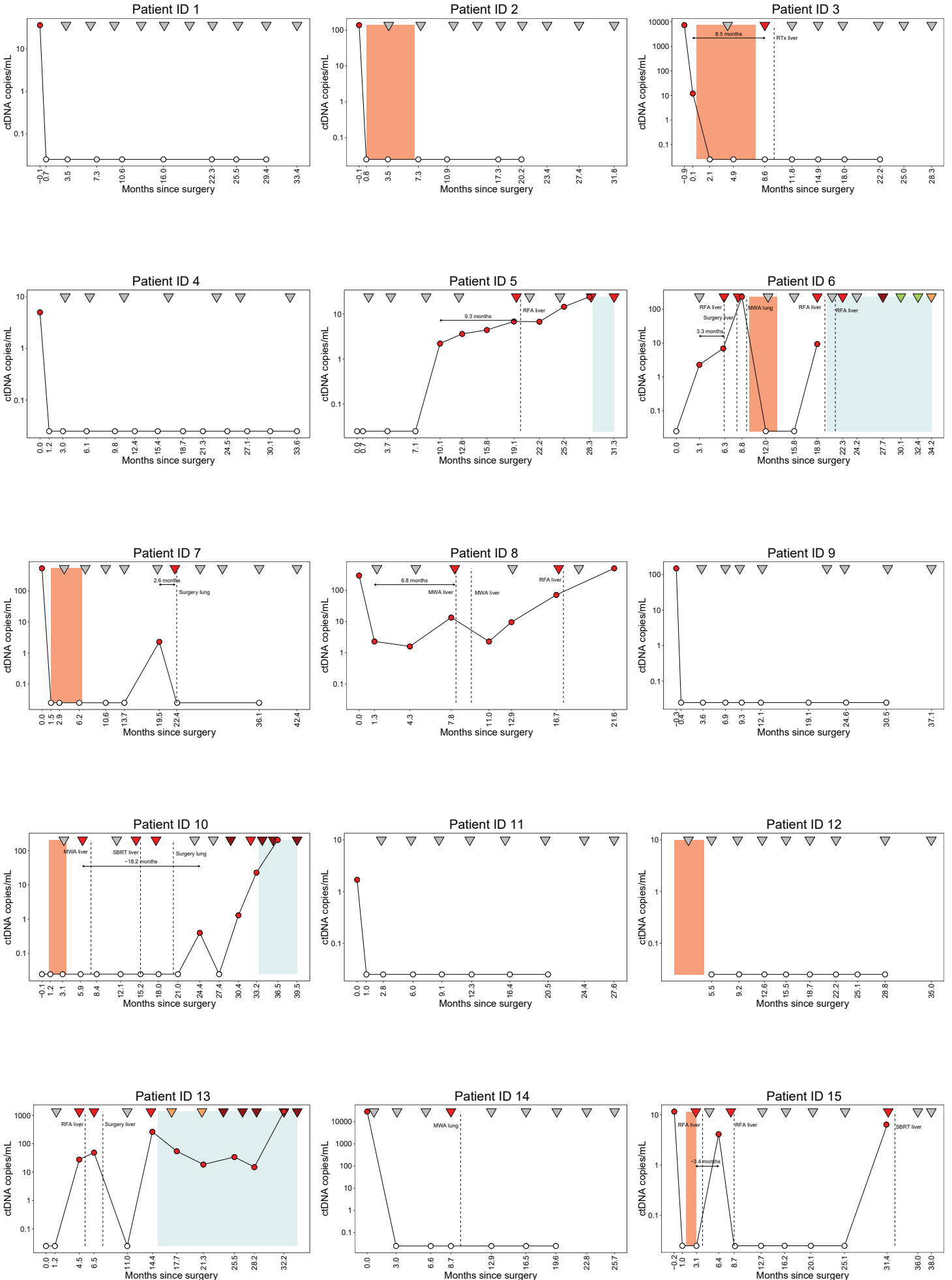
Supplementary Figure S2

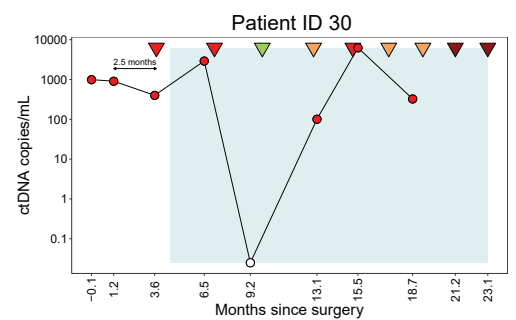
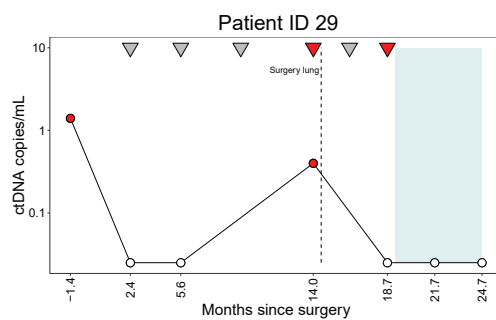
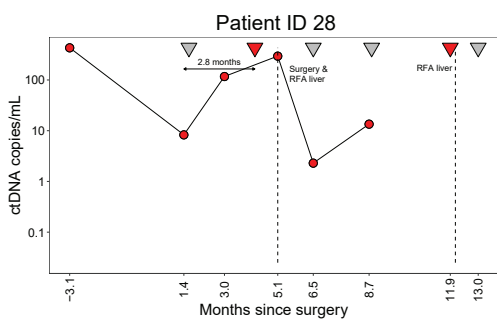
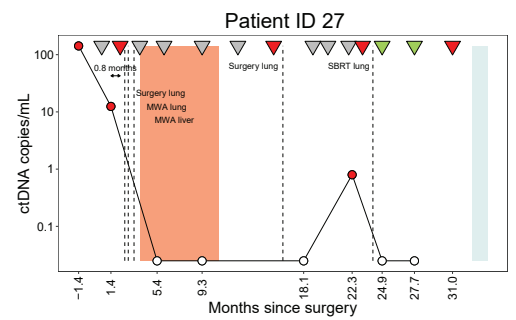
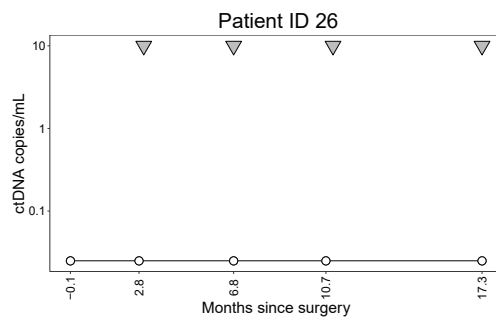
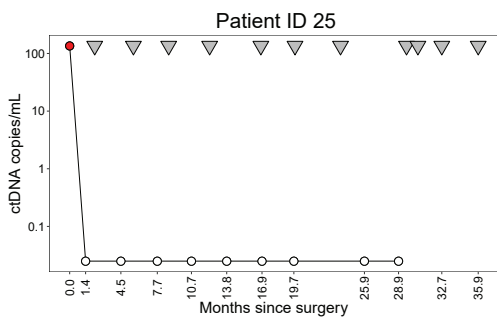
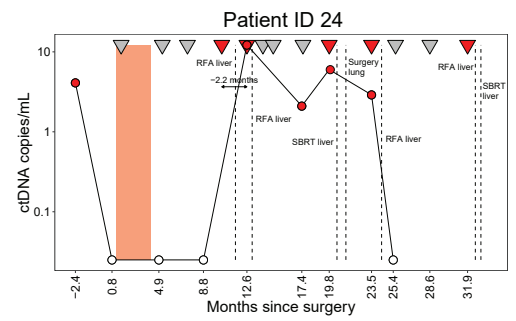
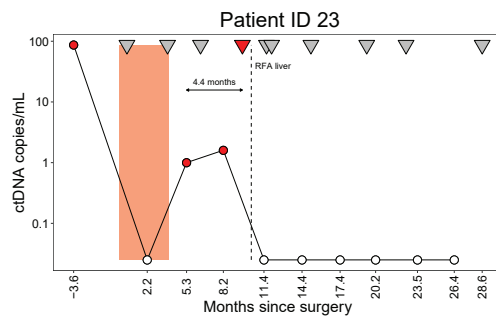
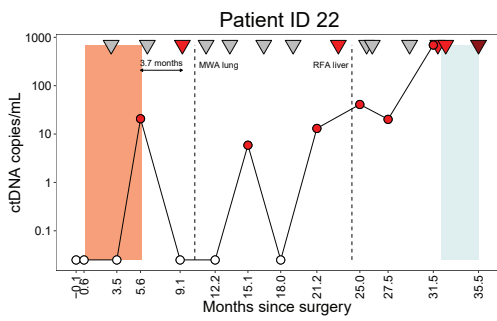
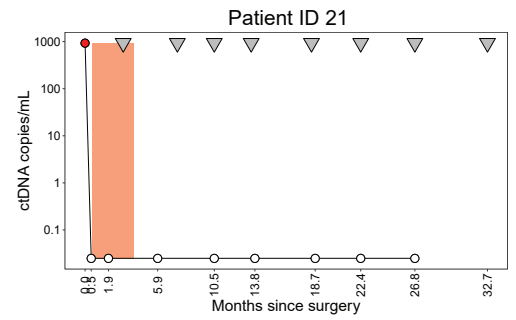
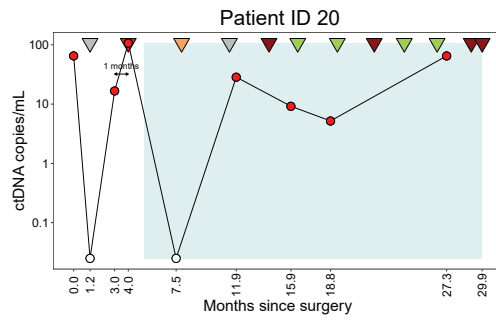
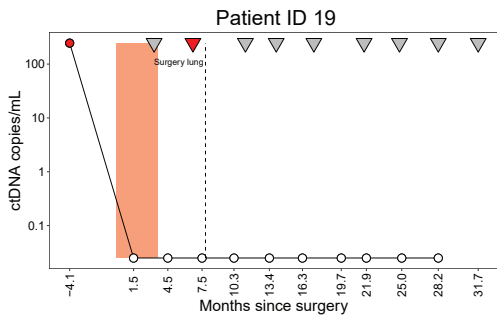
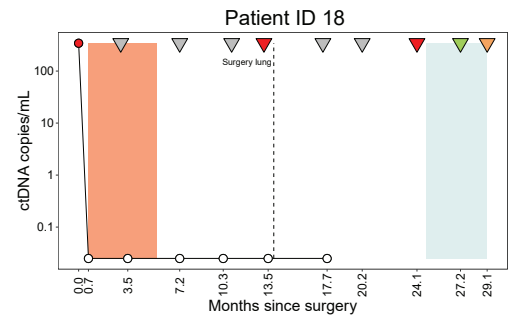
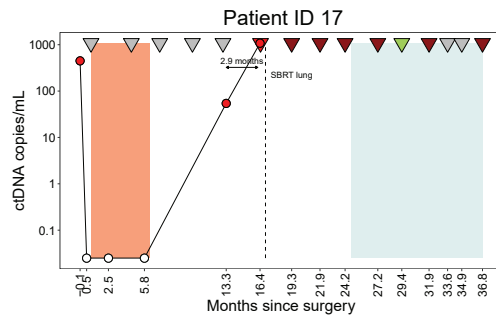
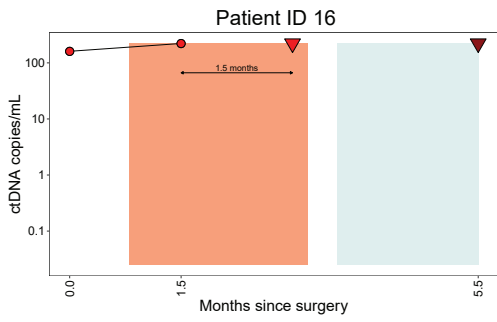
Supplementary Figure S3

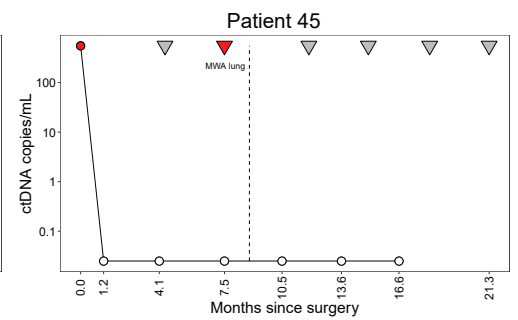
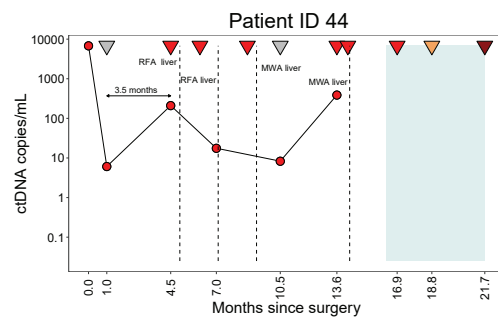
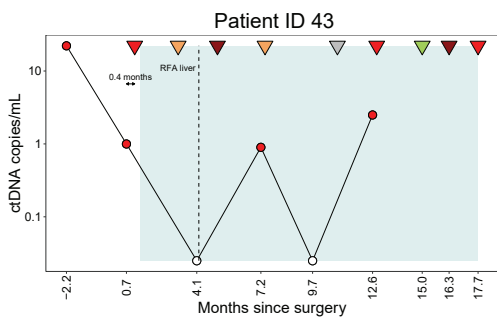
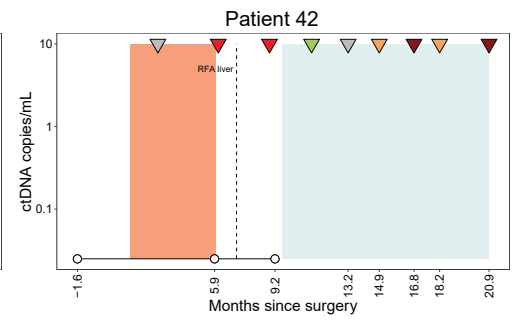
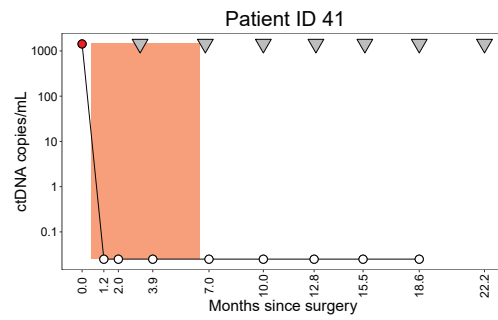
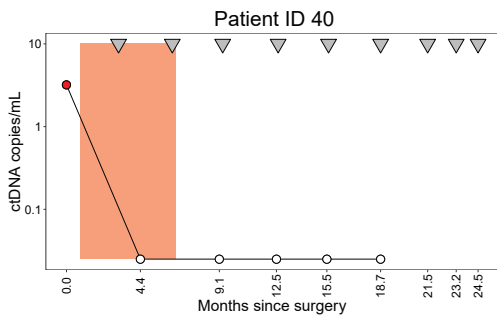
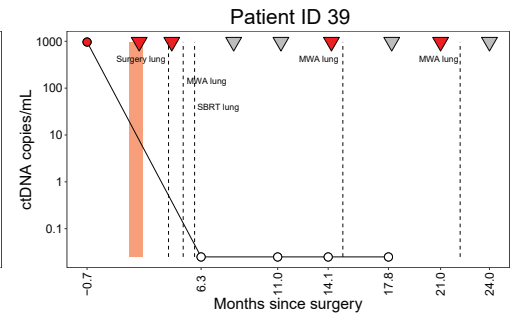
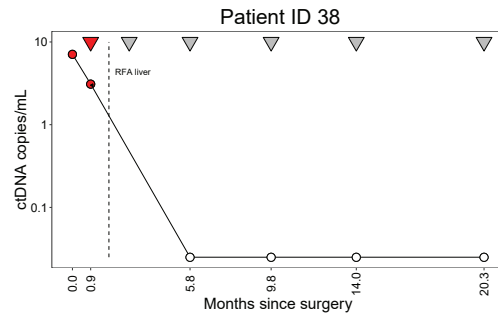
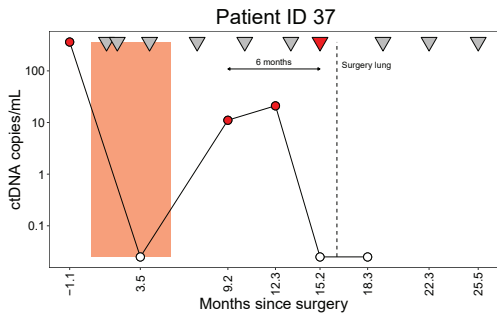
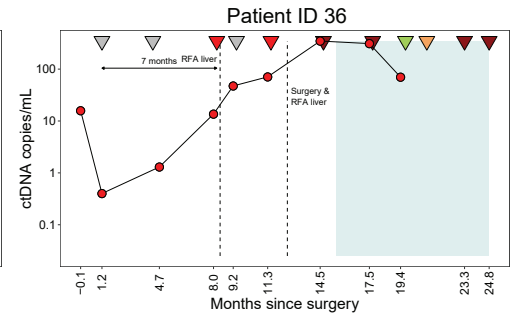
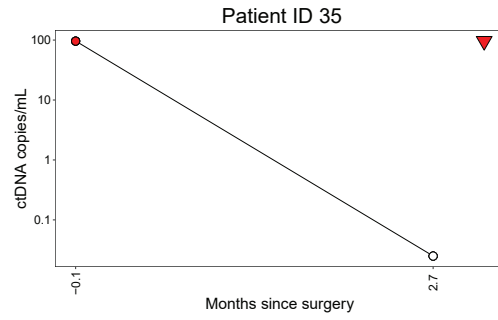
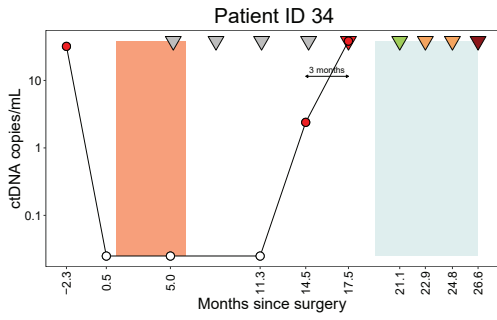
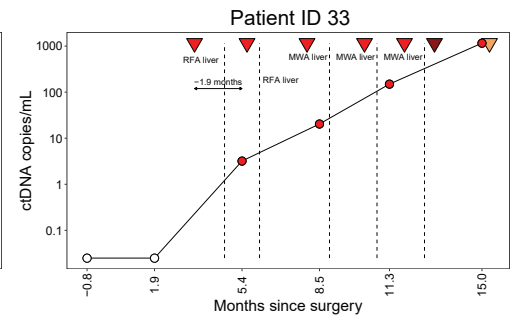
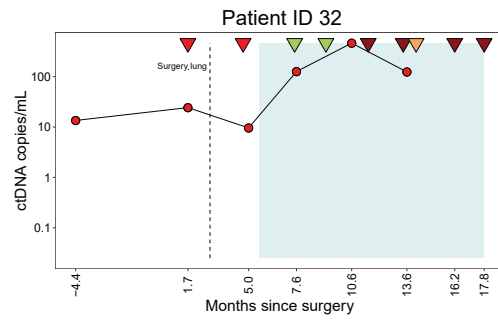
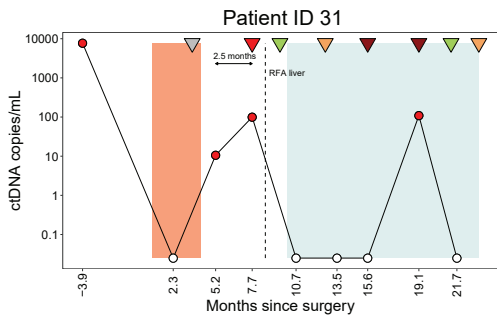
Supplementary Figure S4

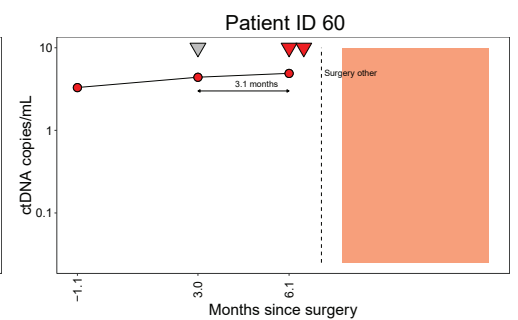
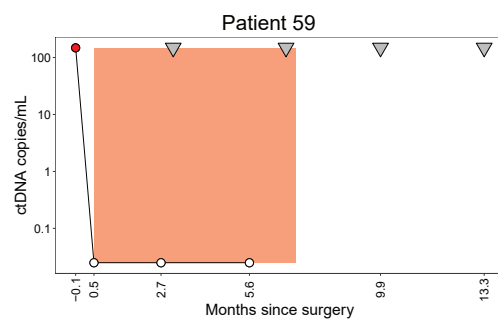
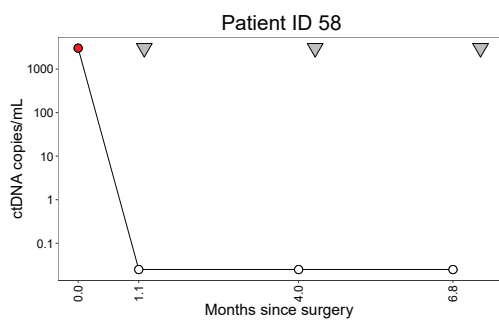
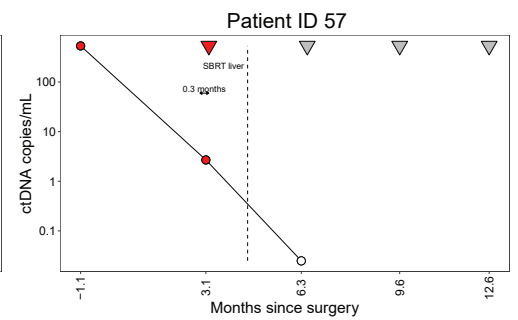
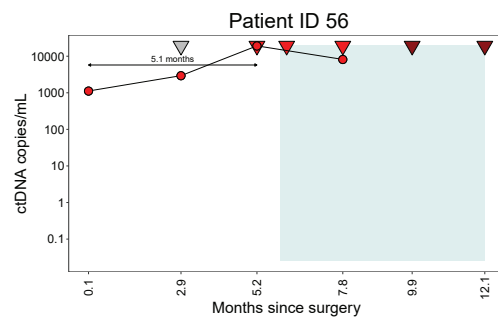
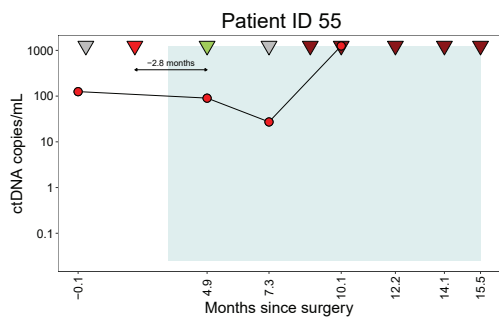
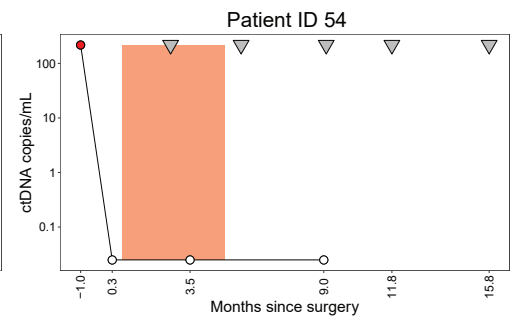
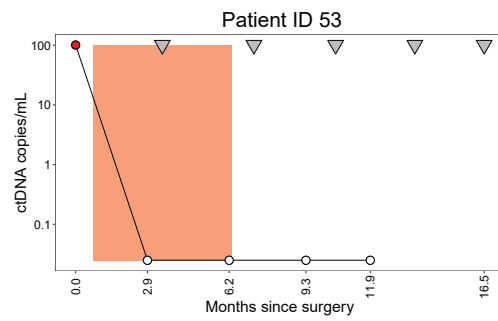
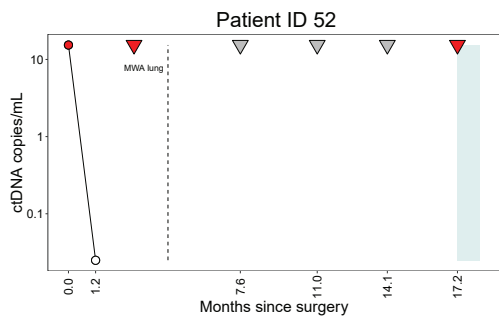
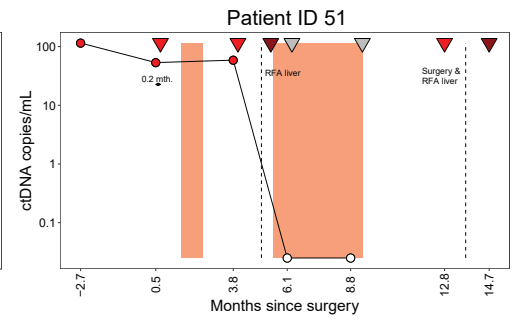
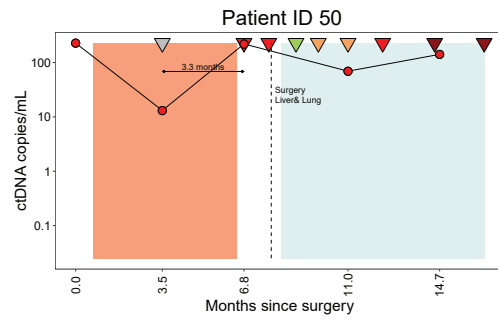
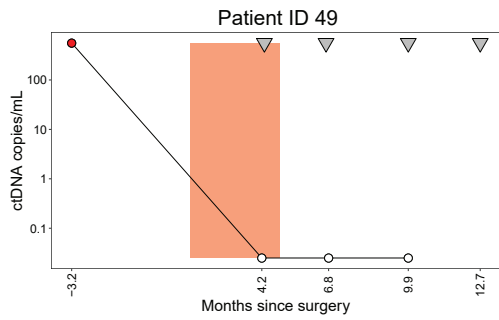
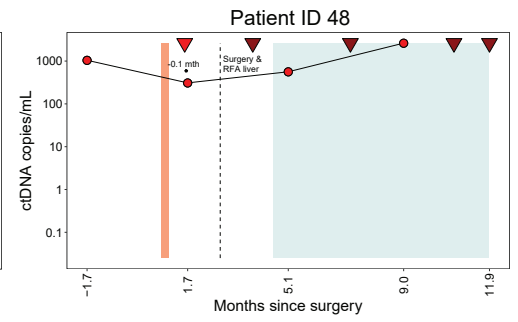
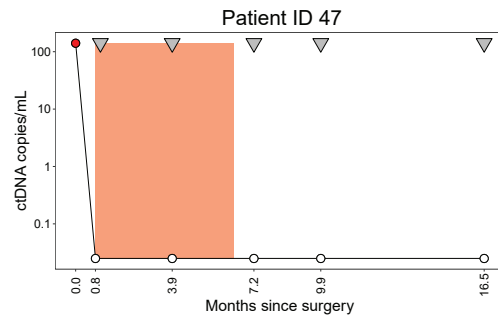
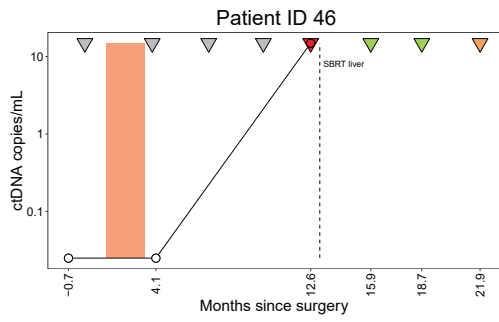
Suppl. Figure S1. Detailed ctDNA results and disease course information.

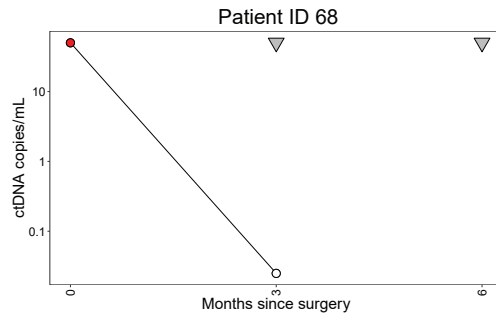
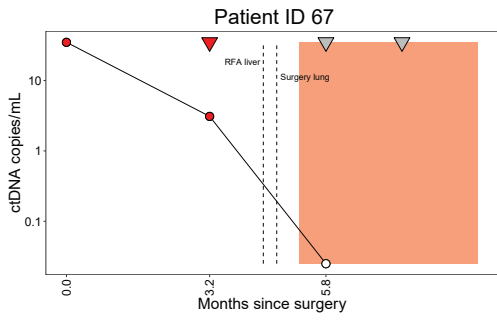
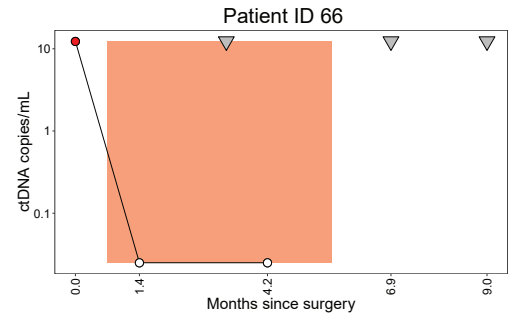
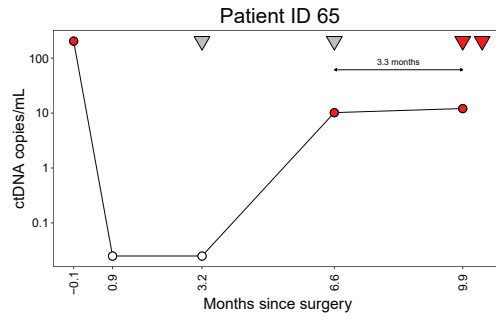
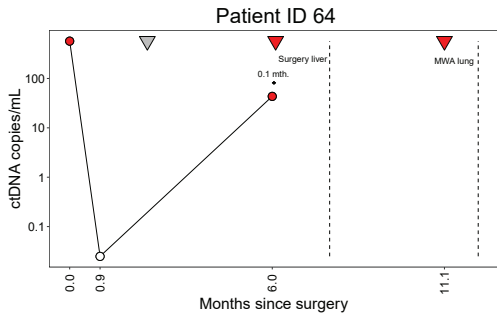
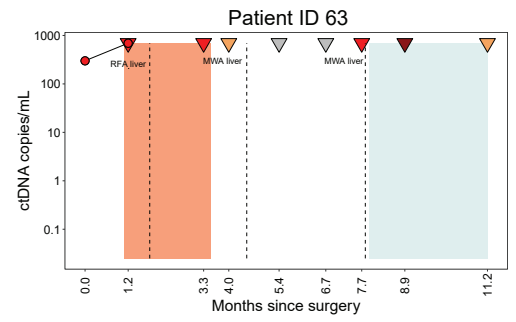
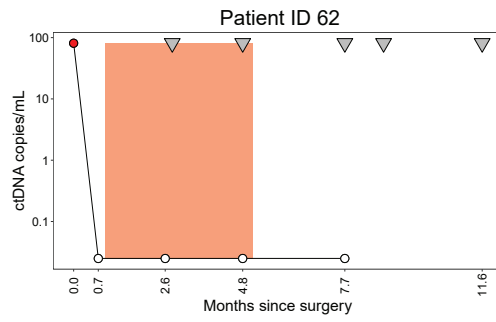
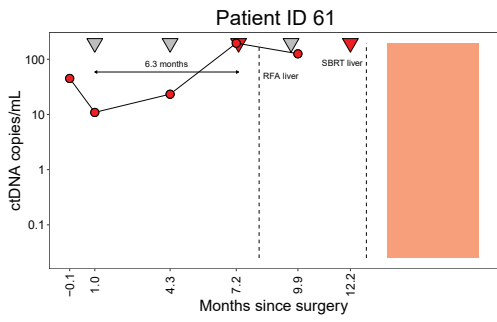
Detailed disease courses, applied treatment, and longitudinal ctDNA analyses for all 68 patients. ctDNA is represented as copies/mL plasma.



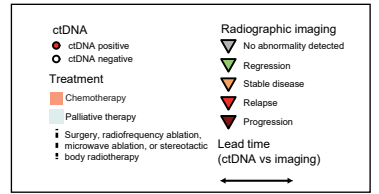




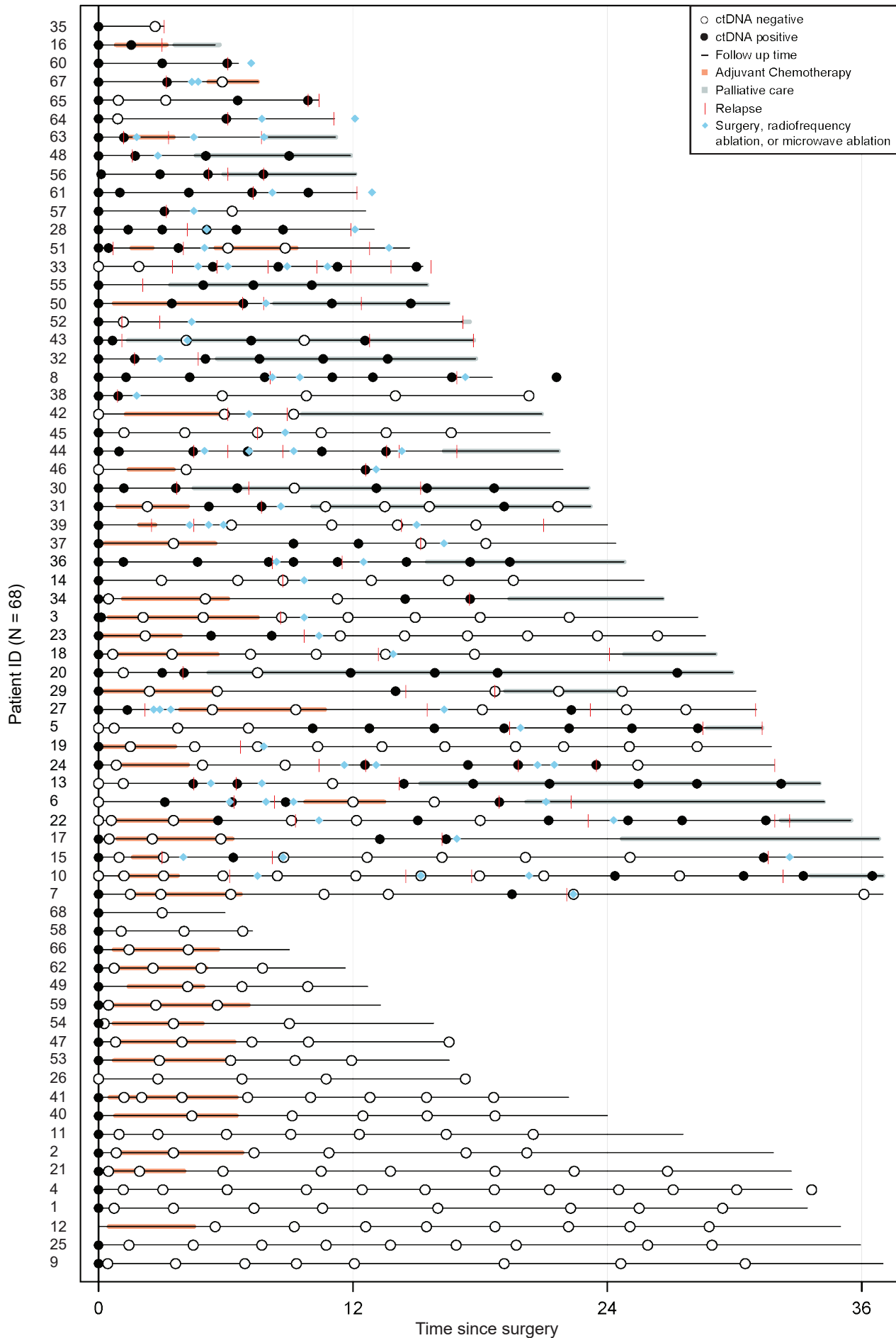




mCRC ctDNA (overview)



Suppl. Figure S2. ctDNA profiling results for all patients analyzed during the study. Patients are ordered by recurrence status. Patients were considered positive if one or more plasma samples postdefinitive treatment was ctDNA-positive. Generally, longitudinal analysis revealed persistent ctDNA positivity in serial samples, with ctDNA status changing only in case of clinical intervention. Patients are sorted by relapse status and follow-up length.



Suppl. Figure S3. Lung metastasis undetected by plasma ctDNA monitoring. Four patients that were ctDNA negative in the period up to diagnosis and surgical treatment for lung metastasis. Mutations used as ctDNA markers were identified in the primary liver metastases.

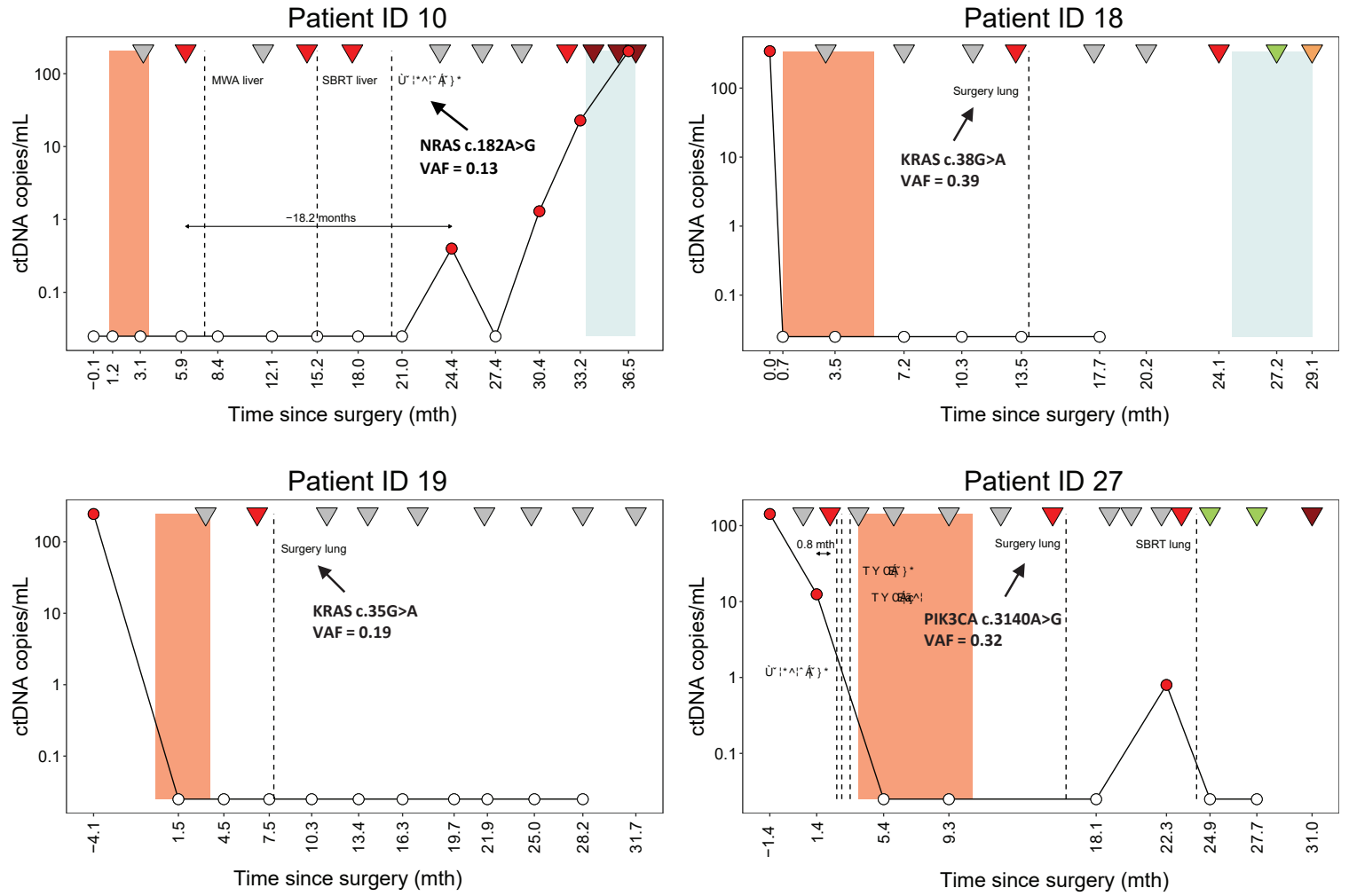
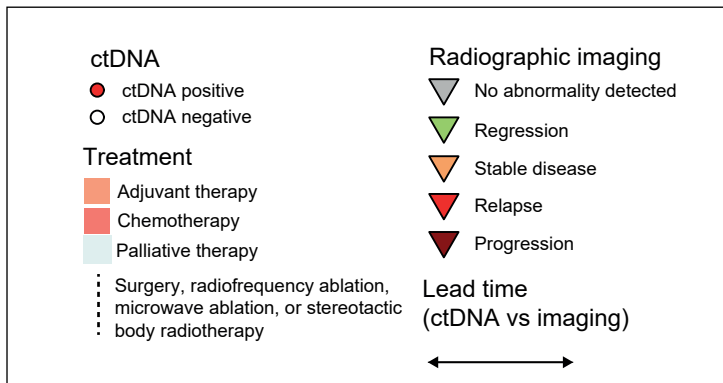
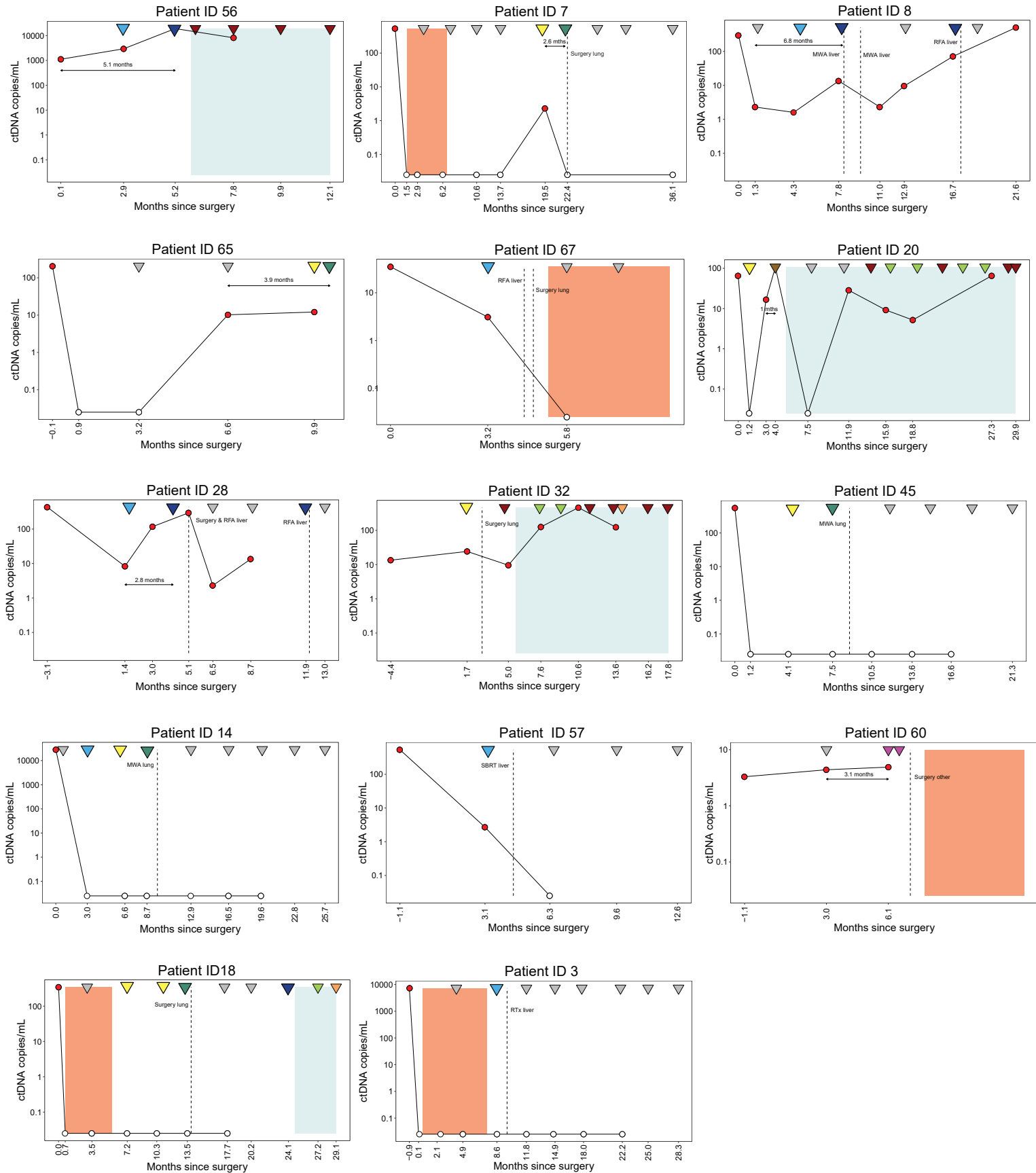


Figure legend



Suppl. Figure S4. Detailed ctDNA results and disease course information for patients with indeterminate radiographic imaging. Detailed disease courses for 21 patients with indeterminate radiographic imaging findings during follow up. For relapsing patients, we only include follow-up from primary treatment and until diagnosis of relapse. Shown are the results of radiographic imaging, longitudinal ctDNA analyses. Treatment periods are also indicated.

Relapse patients with indeterminate findings



Relapse free patients with indeterminate findings

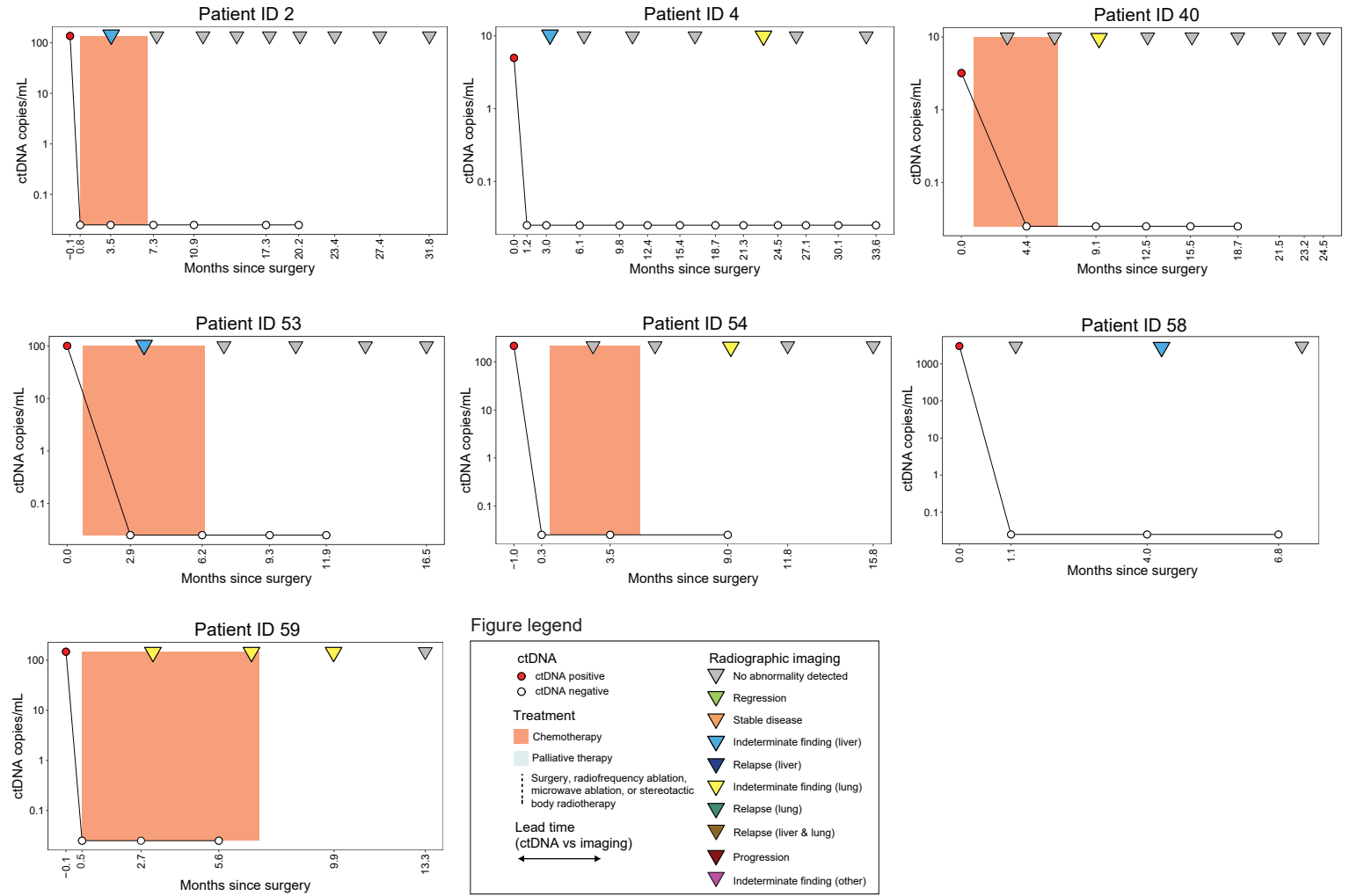


Figure legend

