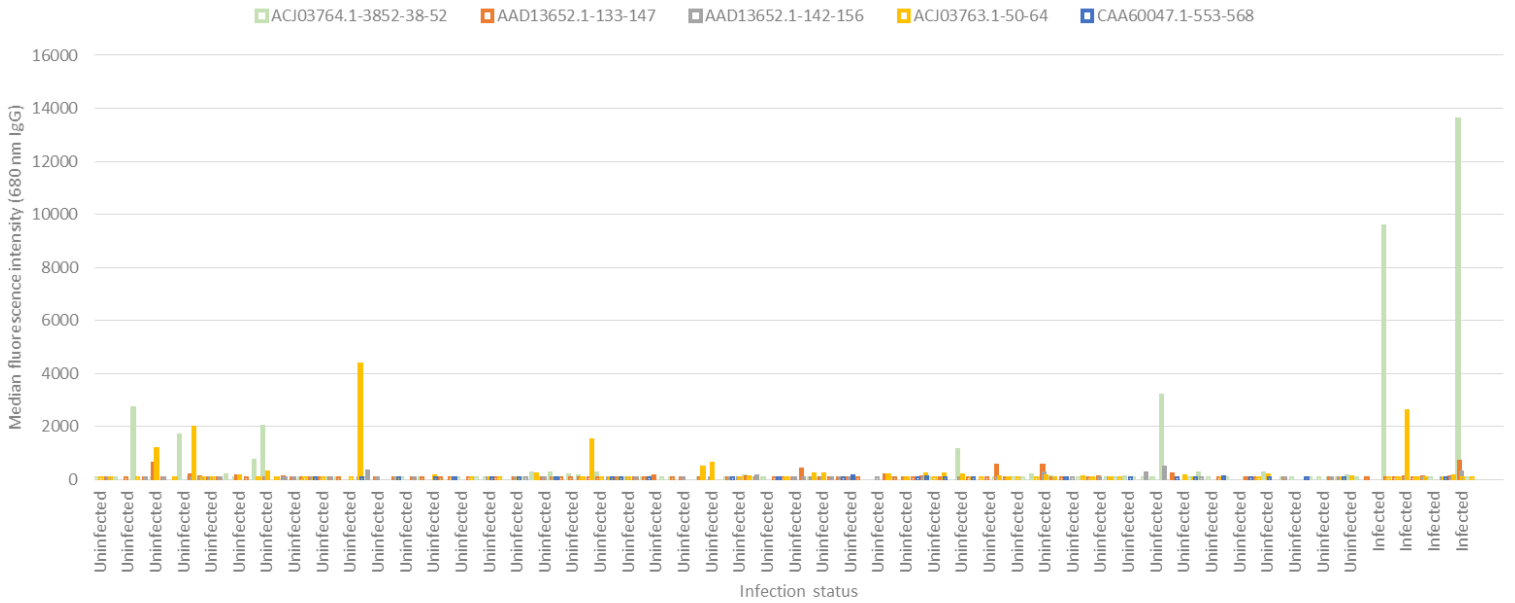


Ascaris lumbricoides



Ascaris lumbricoides

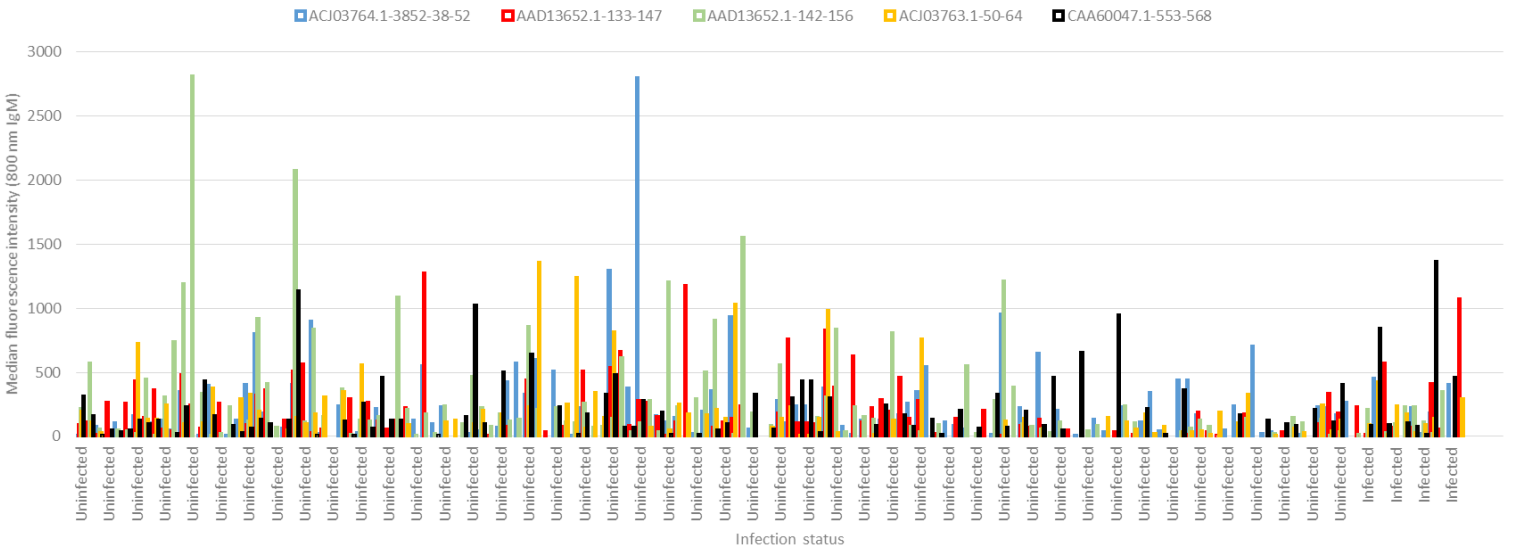
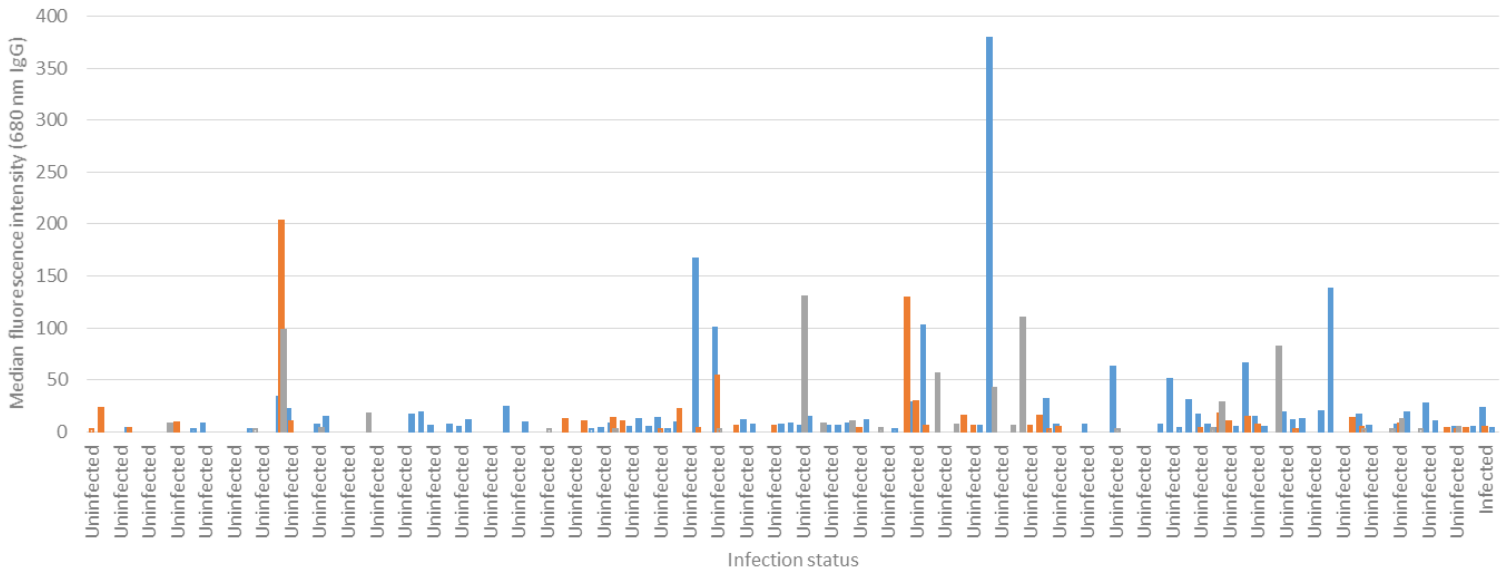


Figure 1: Heat maps and bar graphs generated from peptide microarray data for *Ascaris lumbricoides*. A. Heat maps generated from peptide microarray. Samples are arranged in rows and infection status shown on the left key. Peptides shown by their protein accession number and sequence position are arranged in columns. B. Bar graphs representing the peptide reactivity for each serum and plasma in both the infected and uninfected groups in the study.

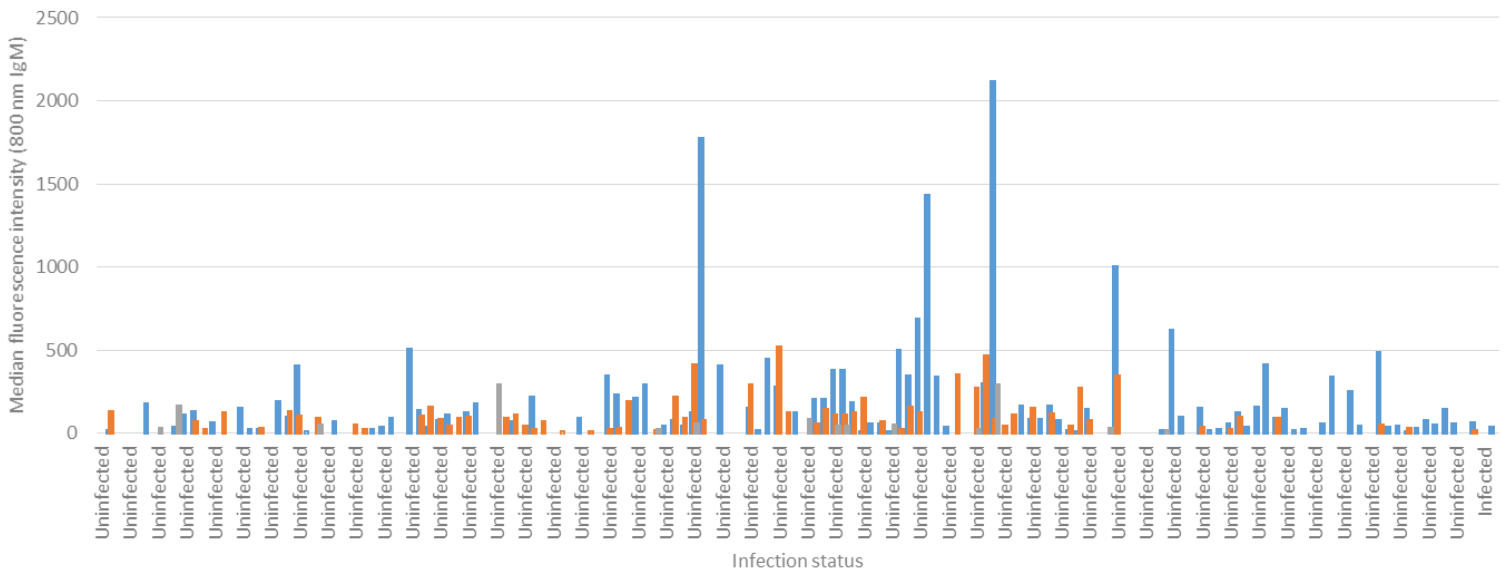
Necator americanus

■ AAP41952.1-180-192 ■ AAP41952.1-194-206 ■ CAC00543.1-123-135



Necator americanus

■ AAP41952.1-180-192 ■ AAP41952.1-194-206 ■ CAC00543.1-123-135



: Heat maps and bar graphs generated from peptide microarray data for *Necator americanus*. A. Heat maps generated from peptide microarray. Samples are arranged in rows and infection status shown on the left key. Peptides shown by their protein accession number and sequence position are arranged in columns. B. Bar graphs representing the peptide reactivity for each serum and plasma in both the infected and uninfected groups in the study.

row min row max

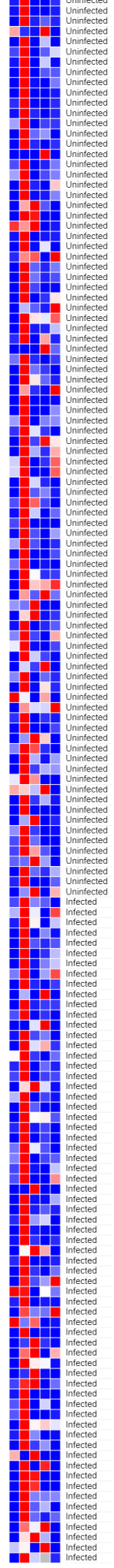
id
XP_012797374.1-78-92
XP_035568858.1-206-220
XP_035568781.1-209-283
AAZ29530.1-25-29
XP_01279745.1-16-30



S. haematobium IgG heat map

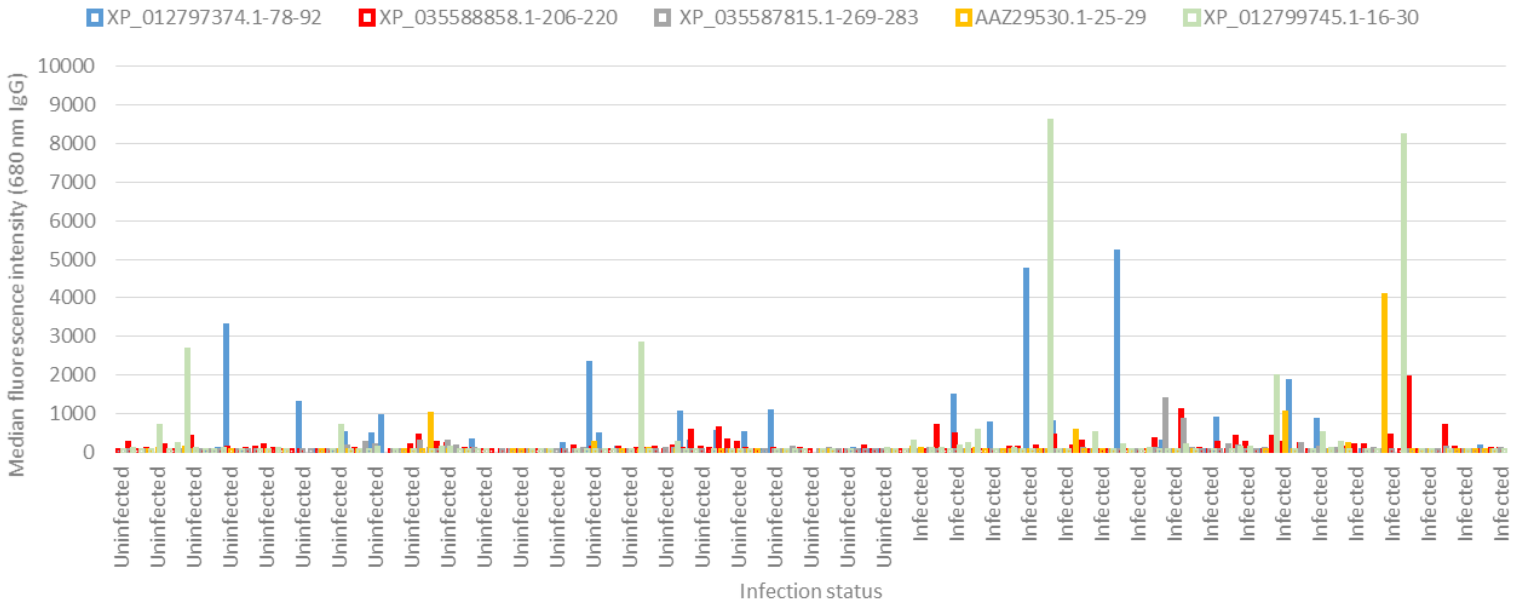
row min row max

id
XP_012797374.1-78-92
XP_035568858.1-206-220
XP_035568781.1-209-283
AAZ29530.1-25-29
XP_01279745.1-16-30

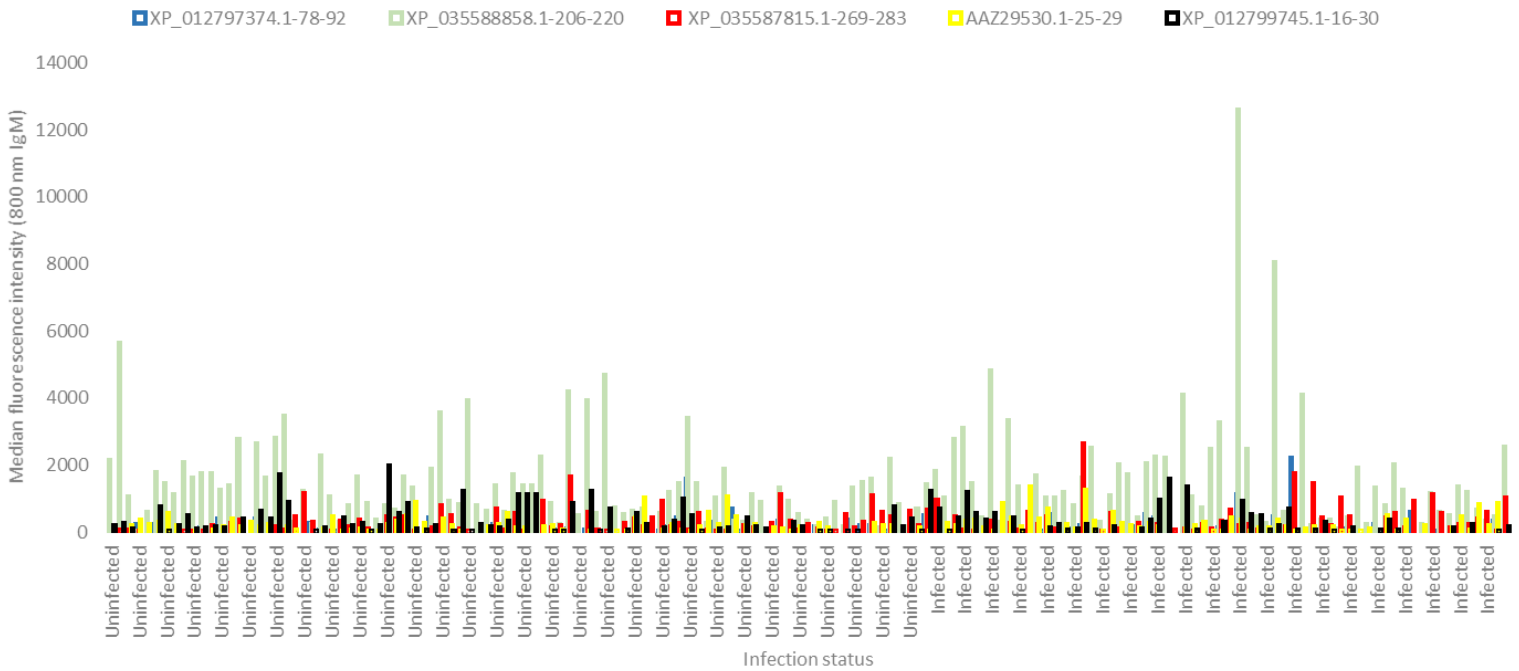


S. haematobium IgM heat map

S. haematobium

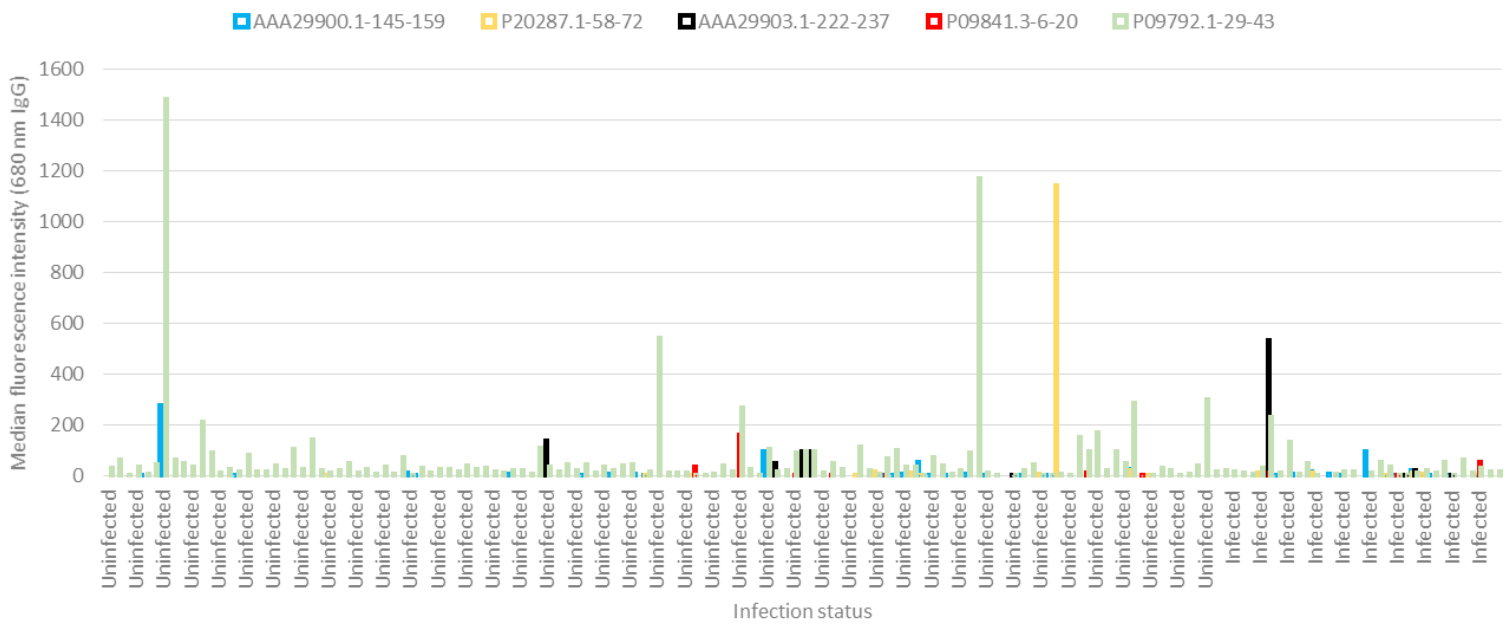


S. haematobium

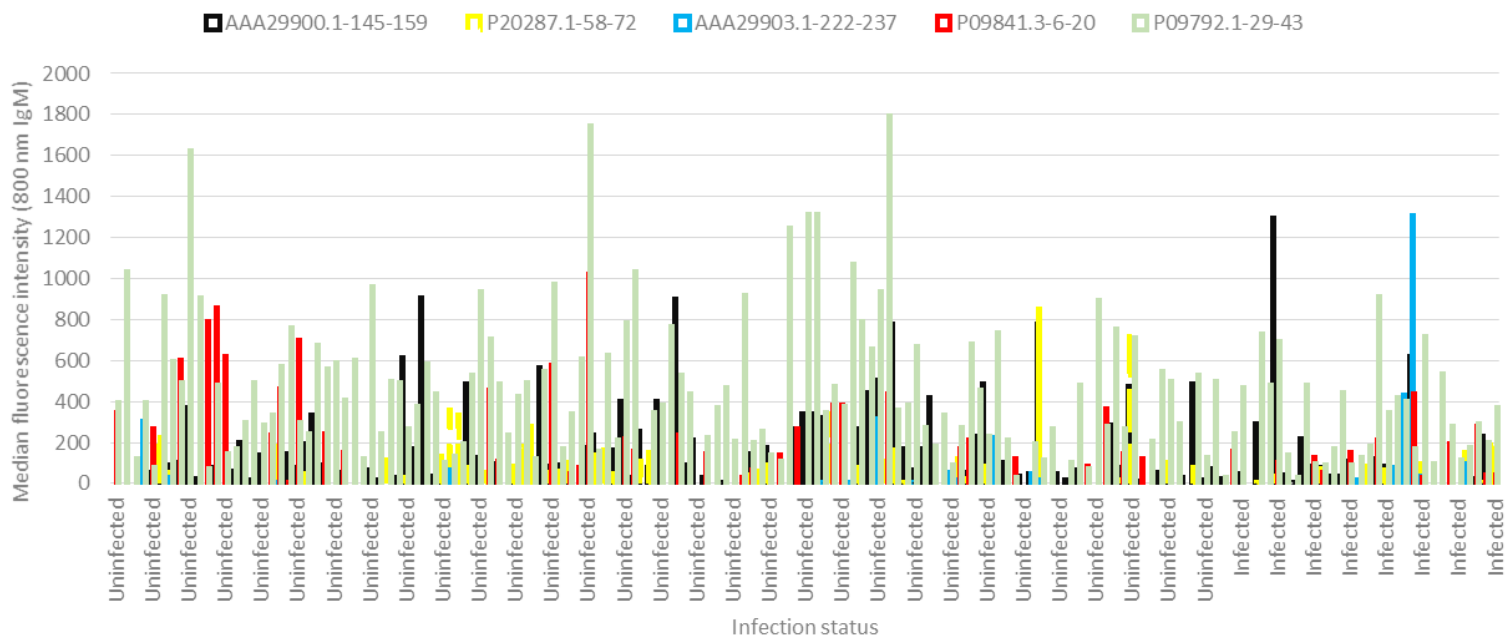


: Heat maps and bar graphs generated from peptide microarray data for *S. haematobium*. A. Heat maps generated from peptide microarray. Samples are arranged in rows and infection status shown on the left key. Peptides shown by their protein accession number and sequence position are arranged in columns. B. Bar graphs representing the peptide reactivity for each serum and plasma in both the infected and uninfected groups in the study.

S. mansoni



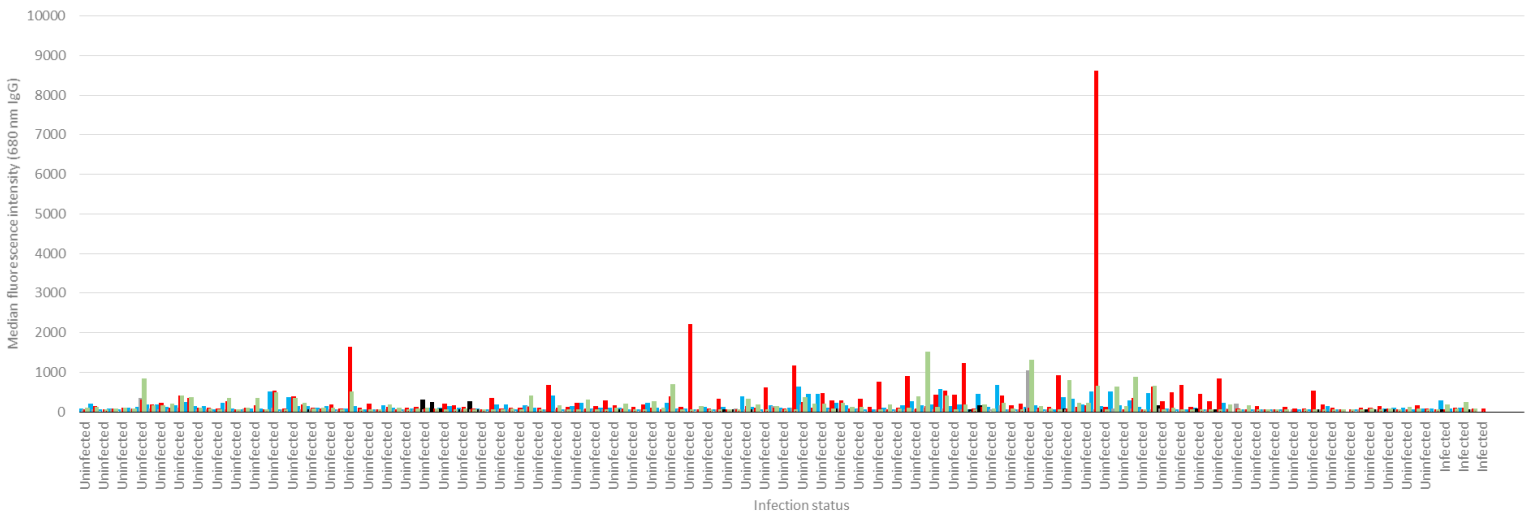
S. mansoni



: Heat maps and bar graphs generated from peptide microarray data for *S. mansoni* A. Heat maps generated from peptide microarray. Samples are arranged in rows and infection status shown on the left key. Peptides shown by their protein accession number and sequence position are arranged in columns. B. Bar graphs representing the peptide reactivity for each serum and plasma in both the infected and uninfected groups in the study.

Trichuris trichuria

■ CDW57769.1-2017-2031 ■ CDW57769.1-659-673 ■ CDW57769.1-834-848 ■ CDW52482.1-326-340 ■ CDW57769.1-1518-1532



Trichuris trichuria

■ CDW57769.1-2017-2031 ■ CDW57769.1-659-673 ■ CDW57769.1-834-848 ■ CDW52482.1-326-340 ■ CDW57769.1-1518-1532

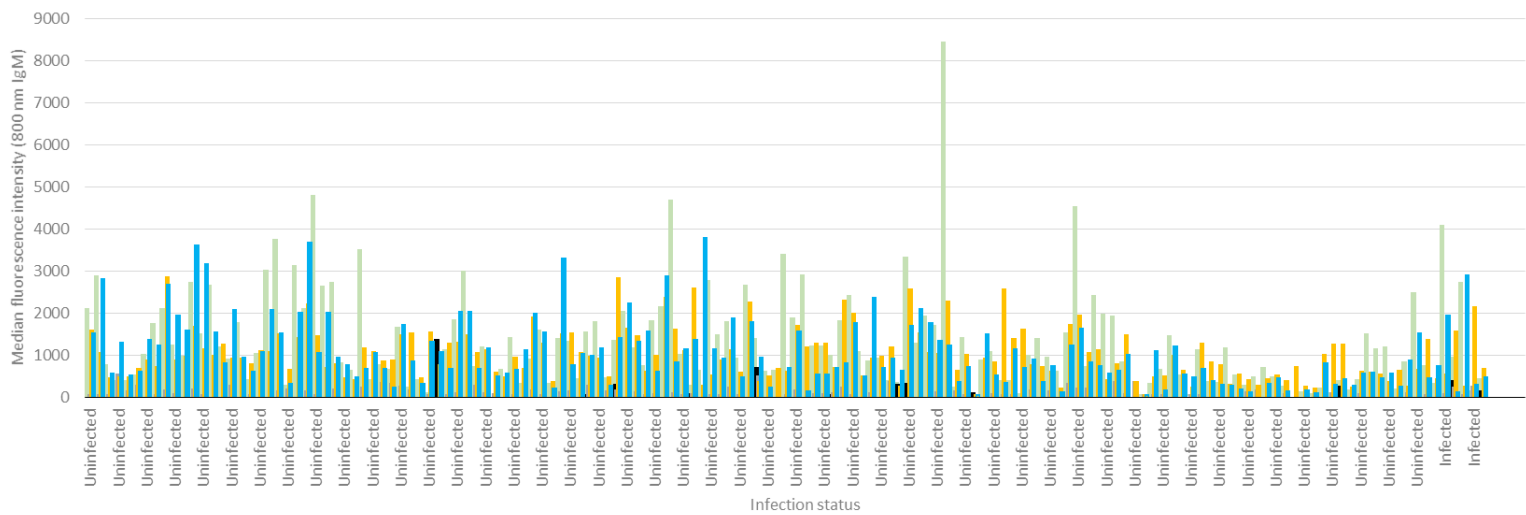


Figure 1: Heat maps and bar graphs generated from peptide microarray data for *Trichuris trichuria*. A. Heat maps generated from peptide microarray. Samples are arranged in rows and infection status shown on the left key. Peptides shown by their protein accession number and sequence position are arranged in columns. B. Bar graphs representing the peptide reactivity for each serum and plasma in both the infected and uninfected groups in the study.