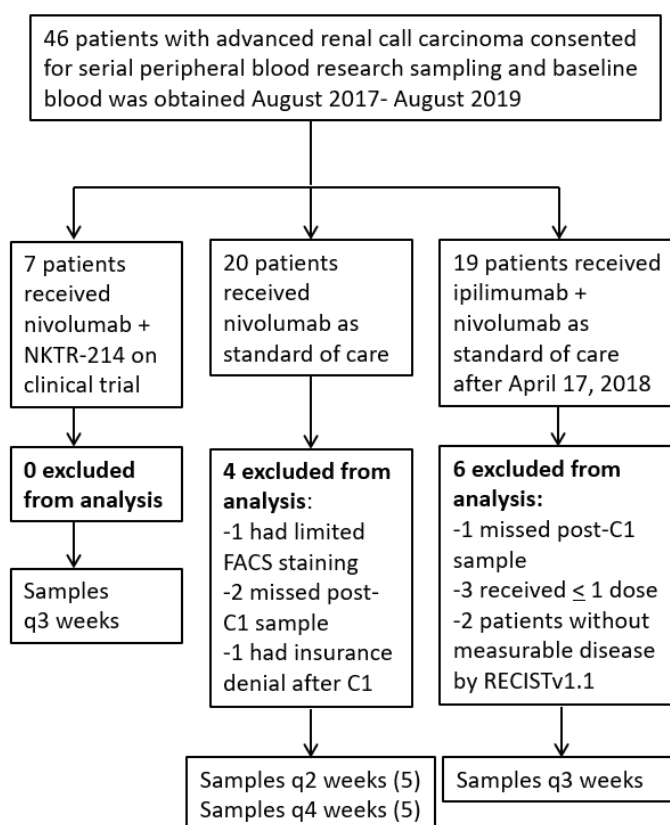


**A****B**

	<b>Total Number (n=36)</b>
Median age, years (range)	58 (33-78)
Male	24 (67%)
Race: Caucasian	24 (89%)
African American	6 (17%)
Histology: pure clear cell	27 (75%)
+ sarcomatoid features	5 (14%)
Papillary + clear cell	1 (3%)
Chromophobe + clear cell	1 (3%)
Collecting duct	1 (3%)
Unclassified	1 (3%)
Former or current smoker	24 (67%)
Lung metastasis at baseline either > 1 cm or biopsy proven	20 (56%)