

1 Supplementary Appendix

2 Supplementary Table 1 Baseline characteristics in a) SELECT-PsA 1 and b) SELECT-

3 PsA 2

4 a)

	Upadacitinib 15 mg (n=429)	Placebo (n=423)	Adalimumab (n=429)
Female sex, n (%)	238 (55)	211 (50)	222 (52)
Age, years	51.6 (12.2)	50.4 (12.2)	51.4 (12.0)
White race, n (%)	386 (90)	377 (89)	375 (87)
Time since psoriatic arthritis diagnosis, years	6.2 (7.4)	6.2 (7.0)	5.9 (7.1)
nbDMARD* at baseline, n (%)			
Methotrexate alone	279 (65)	267 (63)	270 (63)
Methotrexate + other nbDMARD	20 (5)	26 (6)	16 (4)
nbDMARD other than methotrexate	54 (13)	54 (13)	61 (14)
Glucocorticoid use at baseline, n (%)	73 (17)	70 (17)	72 (17)
Tender joint count of 68 joints	20.4 (14.7)	20.0 (14.3)	20.1 (13.8)
Swollen joint count of 66 joints	11.6 (9.3)	11.0 (8.2)	11.6 (8.8)
High-sensitivity C-reactive protein >2.87 mg/L, n (%)	324 (76)	324 (77)	308 (72)
HAQ-DI score	1.2 (0.7)	1.1 (0.6)	1.1 (0.6)
Patient's Assessment of Pain (NRS 0–10)	6.2 (2.1)	6.1 (2.1)	6.0 (2.1)
Patient's Global Assessment of Disease Activity (NRS 0–10)	6.6 (2.0)	6.3 (2.0)	6.3 (2.0)
Affected body-surface area ≥3%, n (%)	214 (50)	211 (50)	211 (49)
PASI score (for baseline body surface area ≥3%)	9.8 (10.0)	11.2 (11.4)	9.4 (8.5)
sIGA of psoriasis, n (%)			
0	34 (8)	24 (6)	34 (8)
1	73 (17)	86 (20)	65 (15)
2	170 (40)	167 (39)	181 (42)
3	133 (31)	119 (28)	132 (31)
4	19 (4)	27 (6)	17 (4)
Presence of enthesitis, n (%) [†]	270 (63)	241 (57)	265 (62)
Leeds Enthesitis Index (for baseline >0)	2.6 (1.6)	2.7 (1.5)	2.5 (1.4)
Presence of dactylitis, n (%) [‡]	136 (32)	126 (30)	127 (30)
DAPSA score	55.7 (28.4)	55.0 (27.7)	54.8 (29.5)
PASDAS score	6.3 (1.0)	6.2 (1.1)	6.2 (1.0)

5

6 **b)**

	Upadacitinib 15 mg (n=211)	Placebo (n=212)
Female sex, n (%)	113 (54)	120 (57)
Age, years	53.0 (12.0)	54.1 (11.5)
White race, n (%)	183 (87)	186 (88)
Time since psoriatic arthritis diagnosis, years	9.6 (8.4)	11.0 (10.3)
nbDMARD* at baseline, n (%)		
Methotrexate alone	74 (35)	75 (35)
Methotrexate + other nbDMARD	6 (3)	7 (3)
nbDMARD other than methotrexate	18 (9)	18 (8)
Glucocorticoid use at baseline, n (%)	22 (10)	24 (11)
Tender joint count of 68 joints	24.9 (17.3)	25.3 (17.6)
Swollen joint count of 66 joints	11.3 (8.2)	12.0 (8.9)
High-sensitivity C-reactive protein >2.87 mg/L, n (%)	126 (60)	121 (57)
HAQ-DI score	1.1 (0.6)	1.2 (0.7)
Patient's Assessment of Pain (NRS 0–10)	6.4 (2.1)	6.6 (2.1)
Patient's Global Assessment of Disease Activity (NRS 0–10)	6.8 (1.9)	6.8 (2.0)
Affected body-surface area ≥3%, n (%)	130 (62)	131 (62)
PASI score (for baseline body surface area ≥3%)	10.1 (9.2)	11.7 (11.4)
sIGA of psoriasis, n (%)		
0	9 (4)	17 (8)
1	31 (15)	32 (15)
2	82 (39)	59 (28)
3	78 (37)	88 (42)
4	11 (5)	16 (8)
Presence of enthesitis, n (%) [†]	133 (63)	144 (68)
Leeds Enthesitis Index (for baseline >0)	3.0 (1.6)	3.3 (1.7)
Presence of dactylitis, n (%) [‡]	55 (26)	64 (30)
DAPSA score	60.8 (31.0)	61.2 (32.6)
PASDAS score	6.3 (1.1)	6.4 (1.2)

7 Data are mean (SD) unless otherwise stated

8 *Permitted concomitant nbDMARDs included methotrexate, sulfasalazine, leflunomide, apremilast, hydroxychloroquine,
9 bucillamine, and iguratimod.

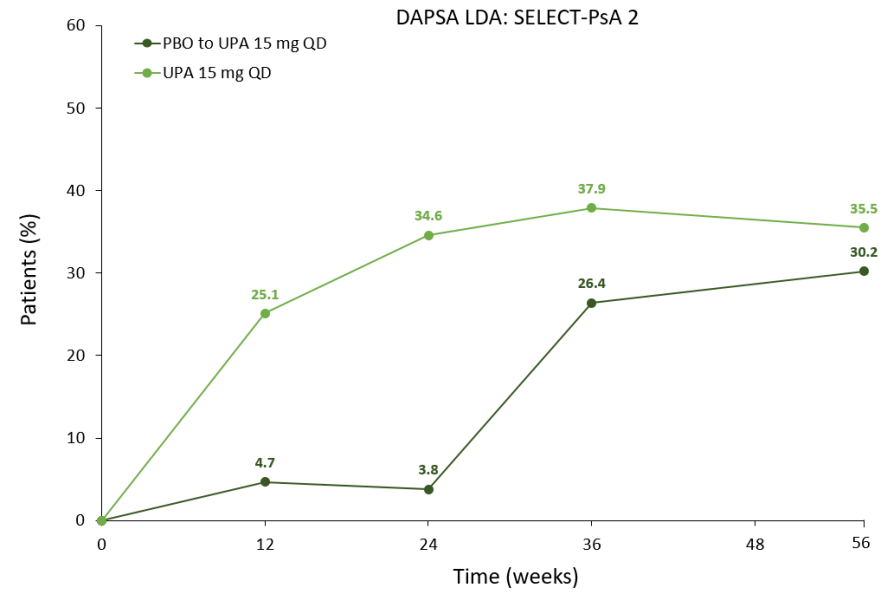
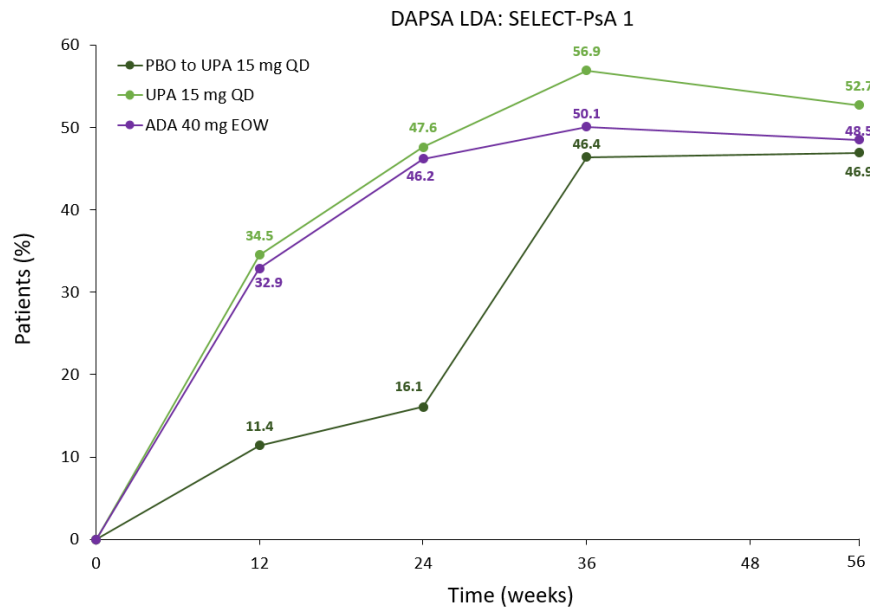
10 [†]Presence of enthesitis defined as a score >0 on the Leeds Enthesitis Index

11 [‡]Presence of dactylitis defined as a score >0 on the Leeds Dactylitis Index

- 12 *DAPSA* Disease Activity in Psoriatic Arthritis; *HAQ-DI* Health Assessment Questionnaire–Disability Index; *nbDMARD*
- 13 non-biologic disease-modifying antirheumatic drug; *NRS* numeric rating scale; *PASDAS* Psoriatic Arthritis Disease Activity
- 14 Score; *SD* standard deviation; *sIGA* static Investigator Global Assessment

15 **Supplementary Fig 1** Percentage of patients achieving A) DAPSA LDA, B) PASDAS LDA, C) DAPSA remission and D) PASDAS remission
16 in SELECT-PSA 1 and SELECT-PSA 2

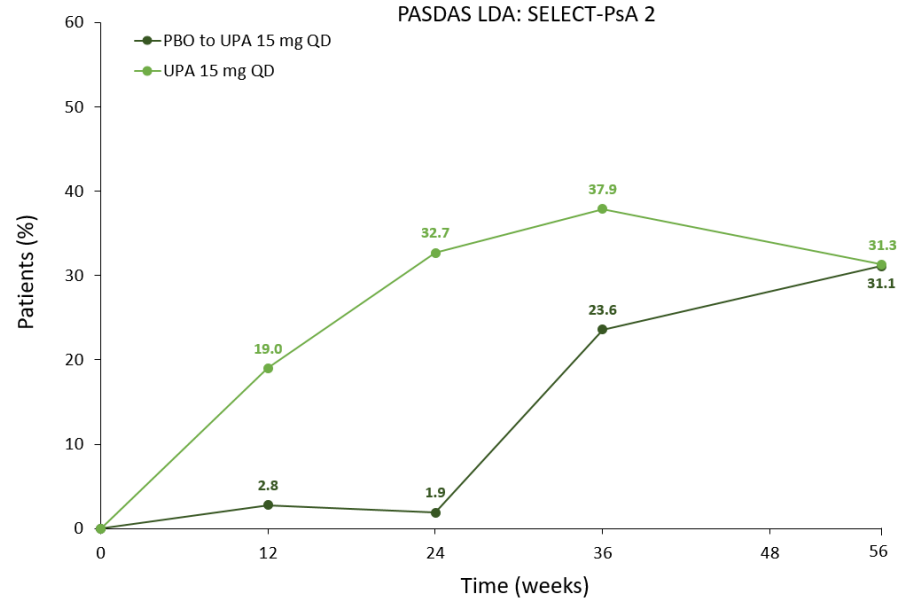
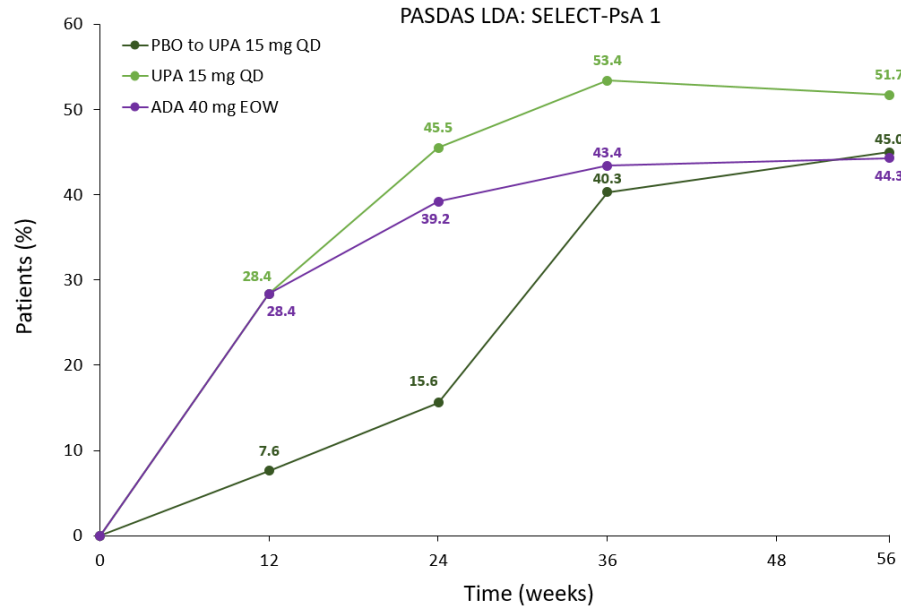
17 **A)**



18

19

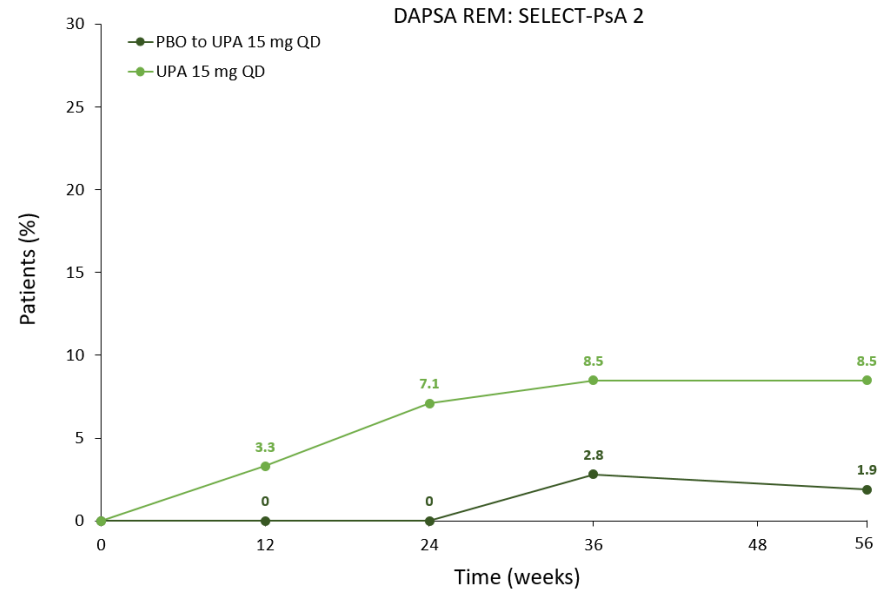
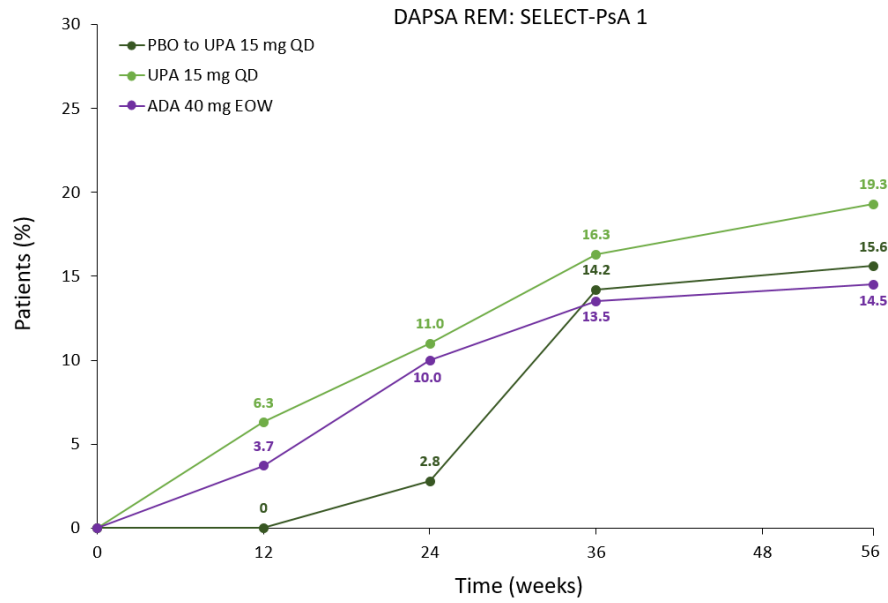
20 B)



21

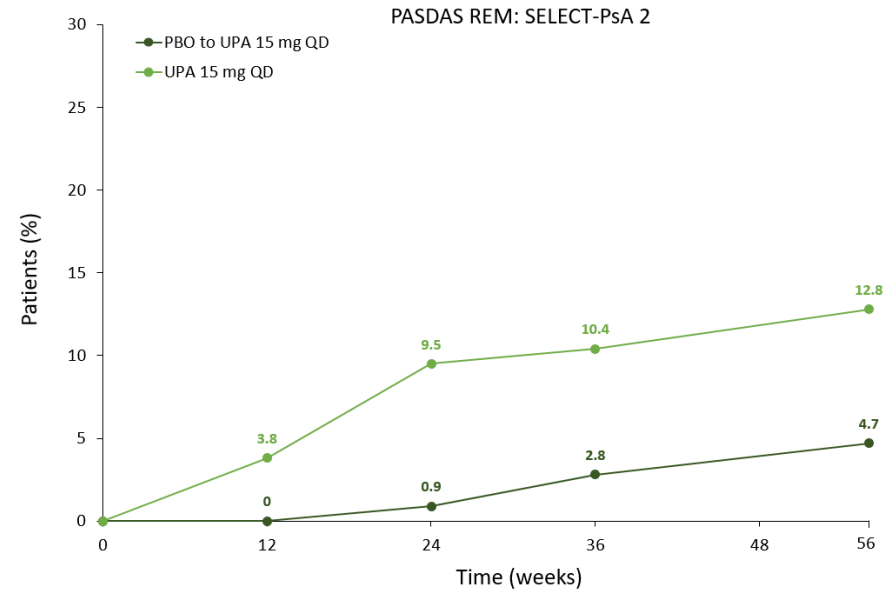
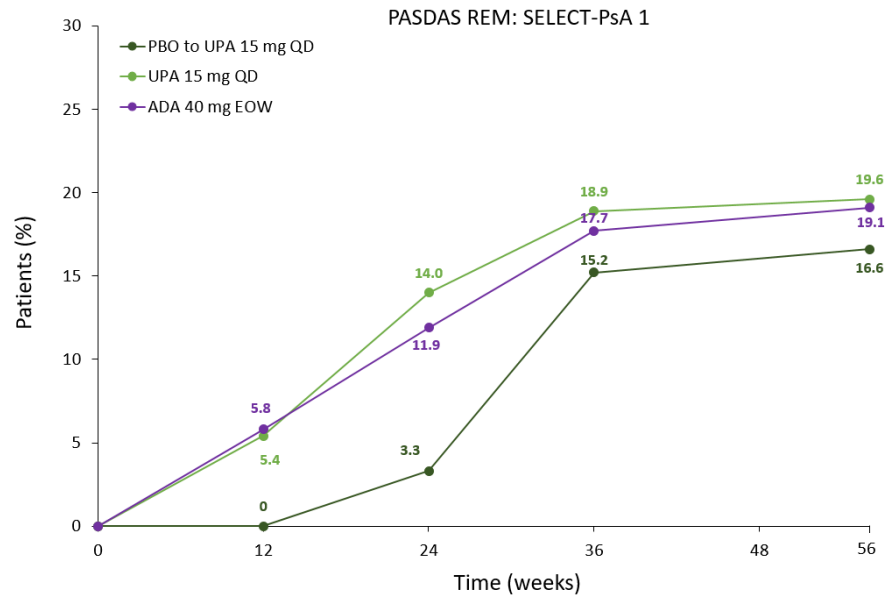
22

23 C)



24

25 **D)**



26

27

28 *EOW* every other week; *DAPSA* Disease Activity in Psoriatic Arthritis; *LDA* low disease activity; *PASDAS* Psoriatic Arthritis Disease Activity Score; *PBO*

29 placebo; *QD* once daily; *REM* remission; *UPA* upadacitinib