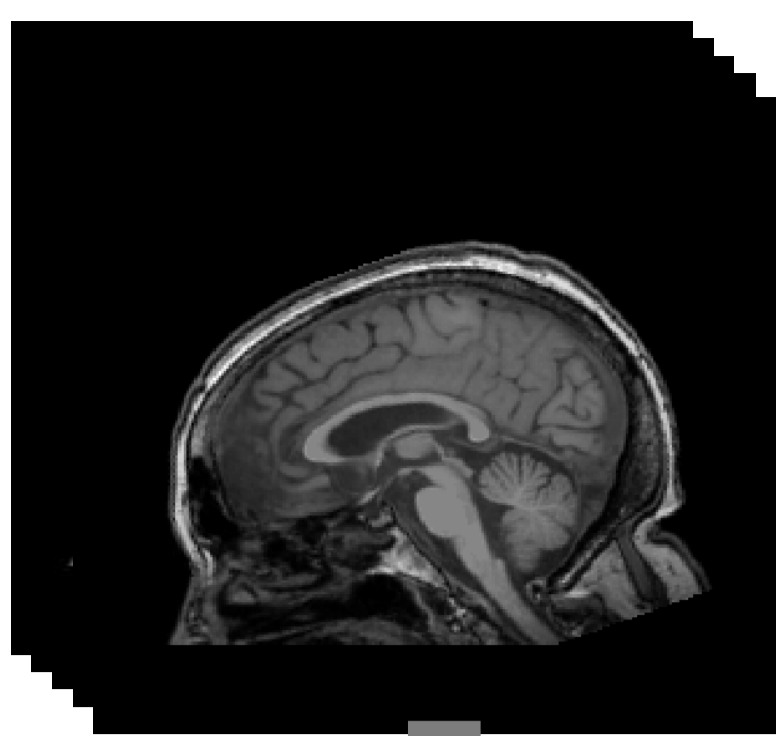
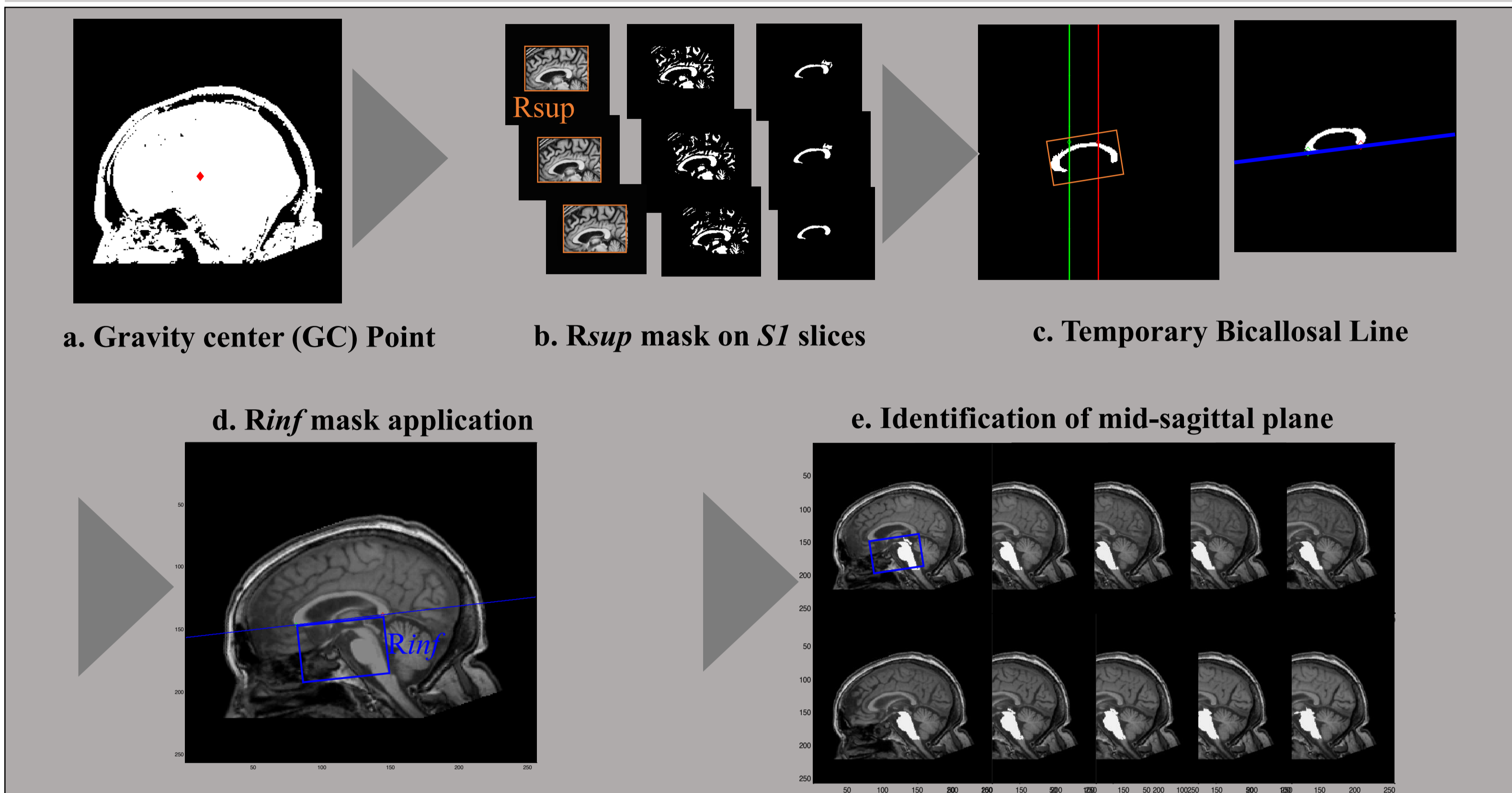


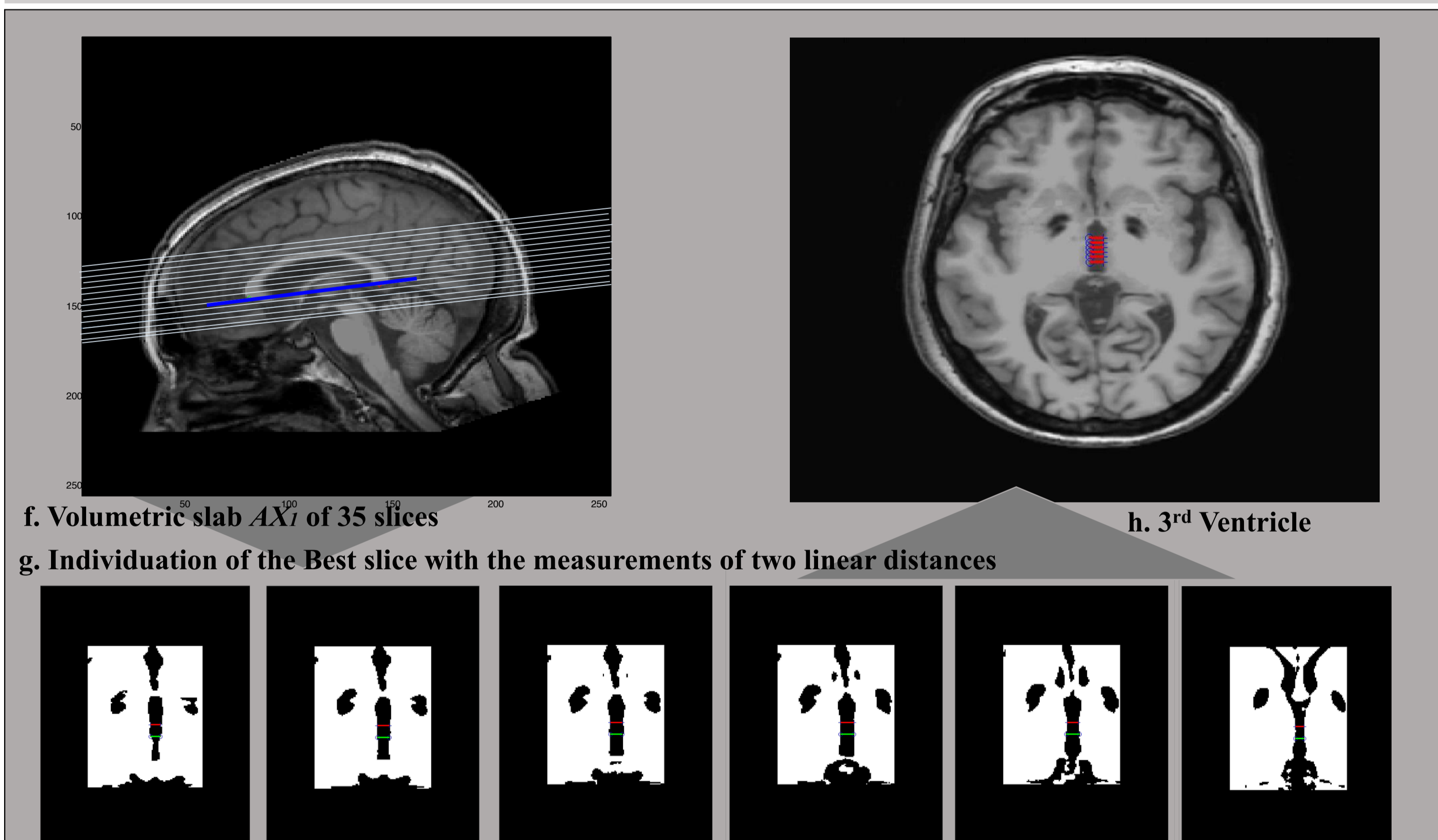
T1- Weighted MRI



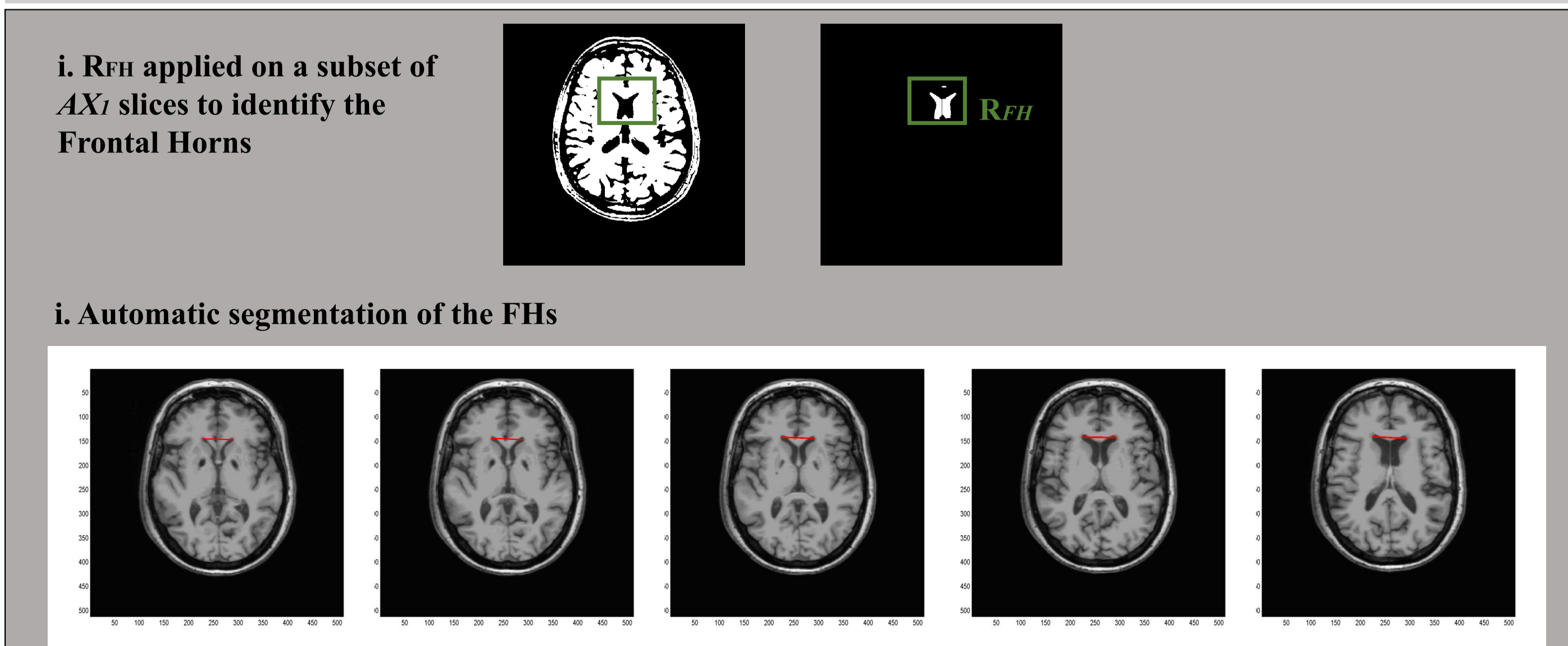
Automatic segmentation of the corpus callosum and Individuation of mid-sagittal plane



Automatic Segmentation of the 3^o Ventricle



Automatic Segmentation of the Frontal Horns



$$\text{AUTOMATIC MRPI 2.0} = \text{MRPI} \cdot 3^{\circ}\text{V} / \text{FH}$$