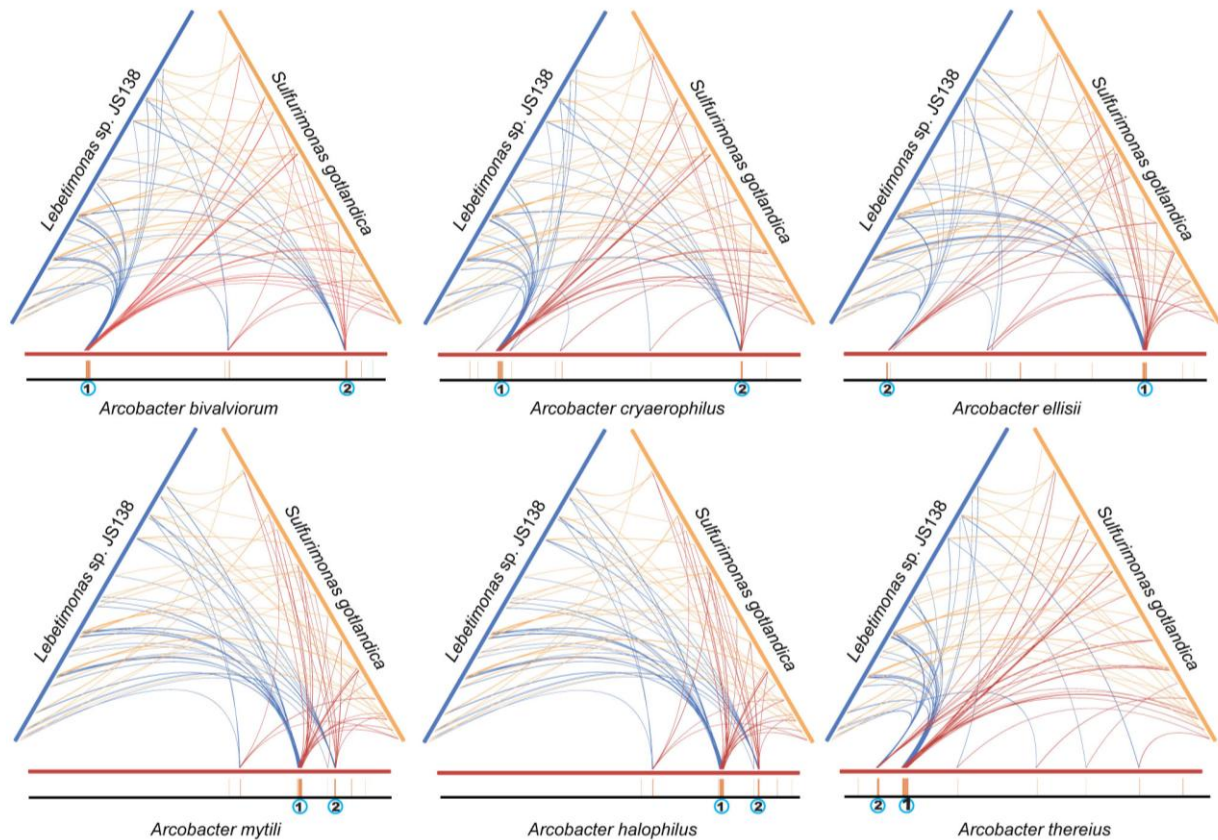


A



B



S6 Fig. (A) Ternary comparison of flagellar gene distribution of six *Arcobacter* species with deep-branching species (*Lebetimonas* sp. JS138) and a close relative (*Sulfurimonas gotlandica* GD1). Below each ternary comparison, the flagellar genes of the *Arcobacter* species are depicted by ochre strips on linearized genomes, and the numerical symbols demonstrate two big flagellar gene clusters: Fcluster-1 and Fcluster-2. **(B)** The gene order of two big flagellar gene clusters (orange arrow) in *Arcobacter* species. The blue arrows represent two chemosensory genes *cheYZ* located inside of Fcluster-1.