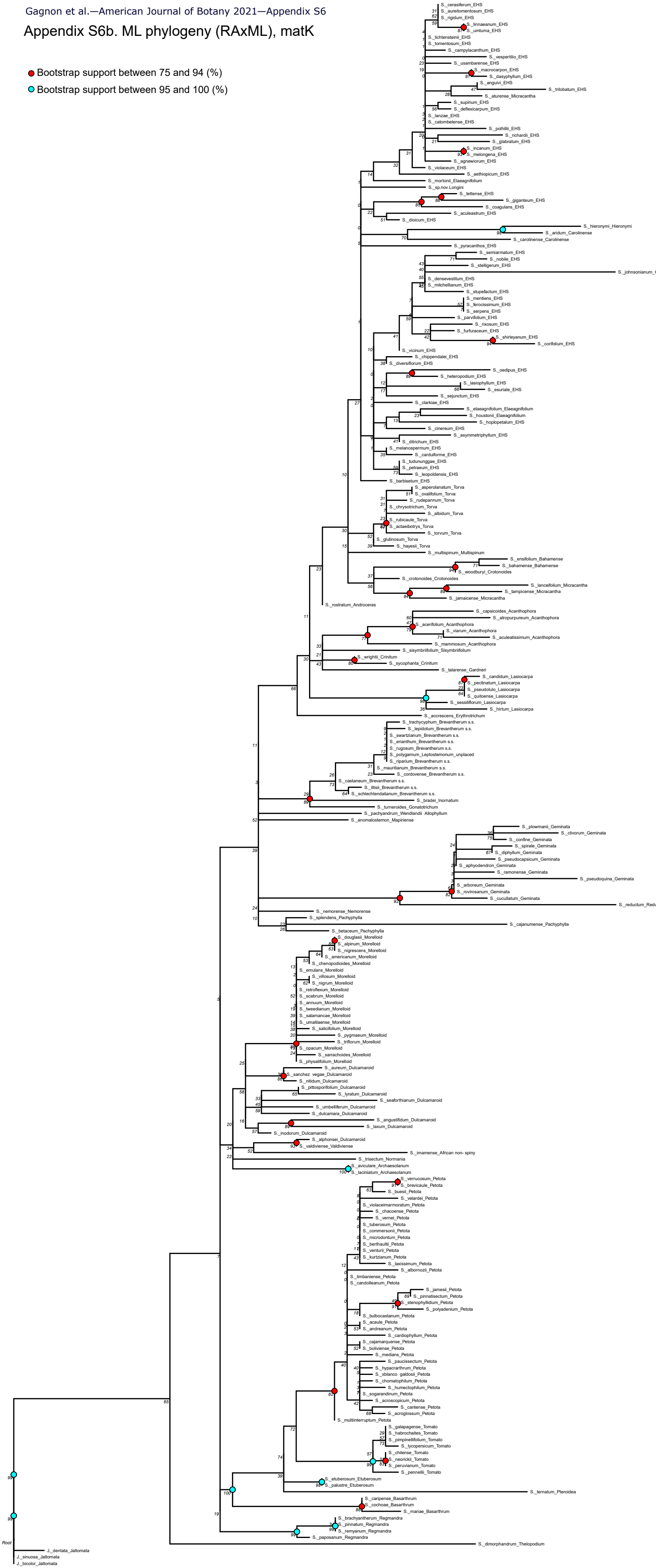
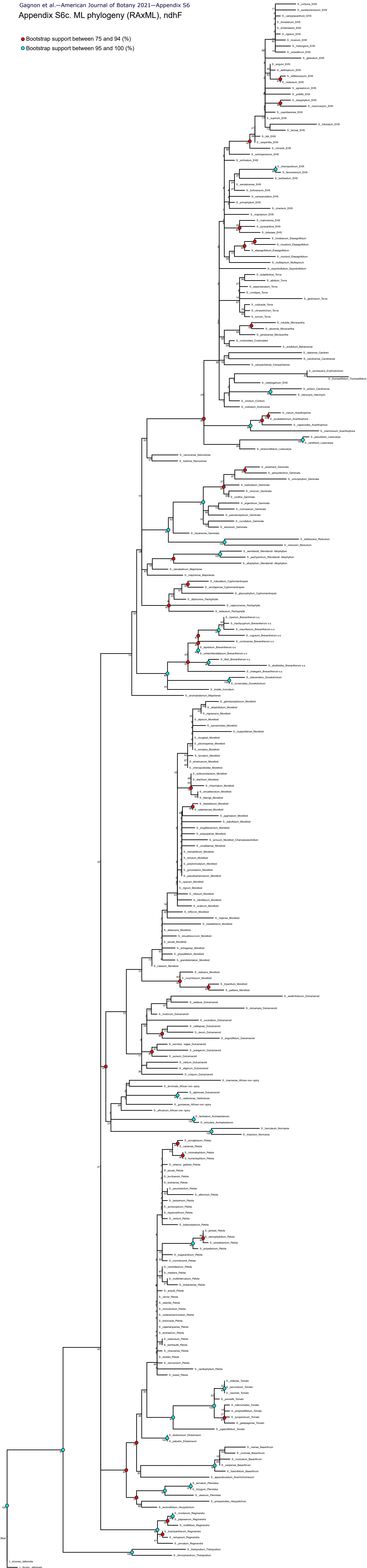


Appendix S6b. ML phylogeny (RAxML), matK

- Bootstrap support between 75 and 94 (%)
- Bootstrap support between 95 and 100 (%)

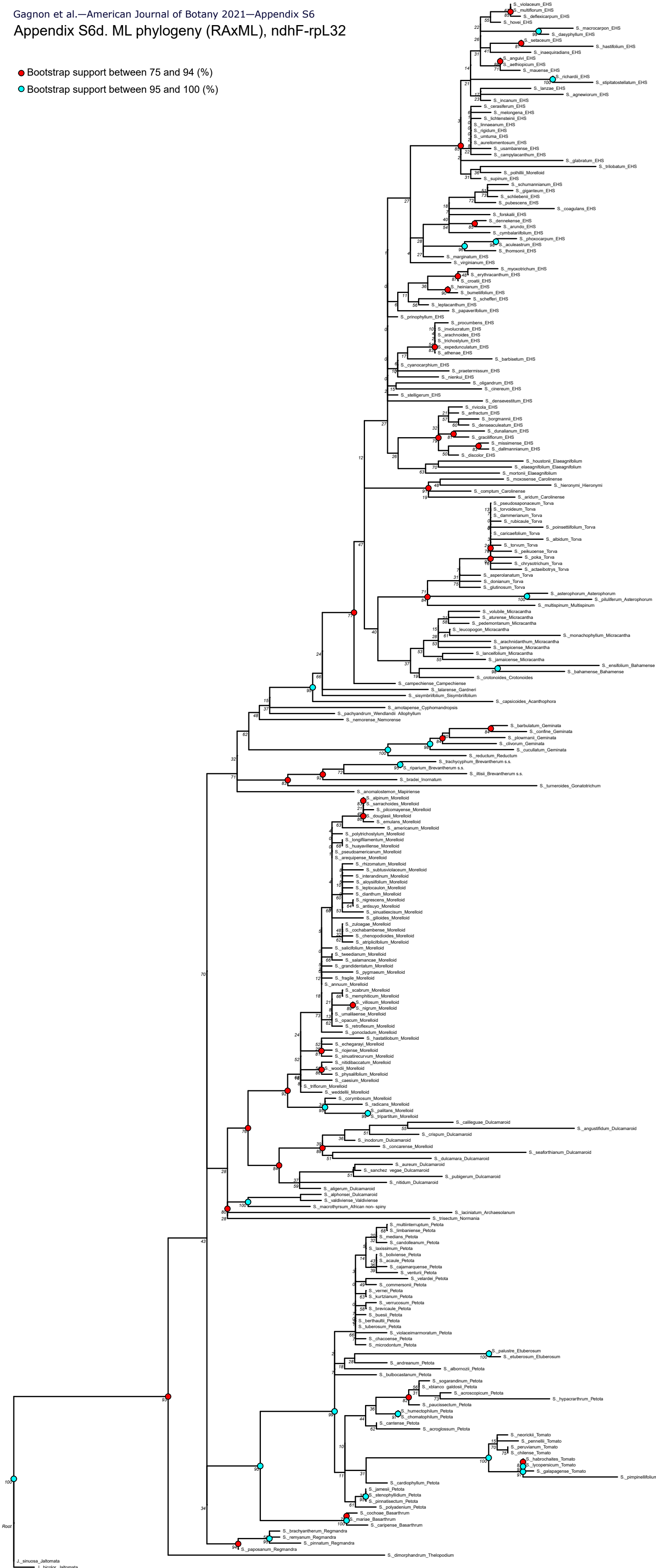


- Bootstrap support between 75 and 94 (%)
- Bootstrap support between 95 and 100 (%)



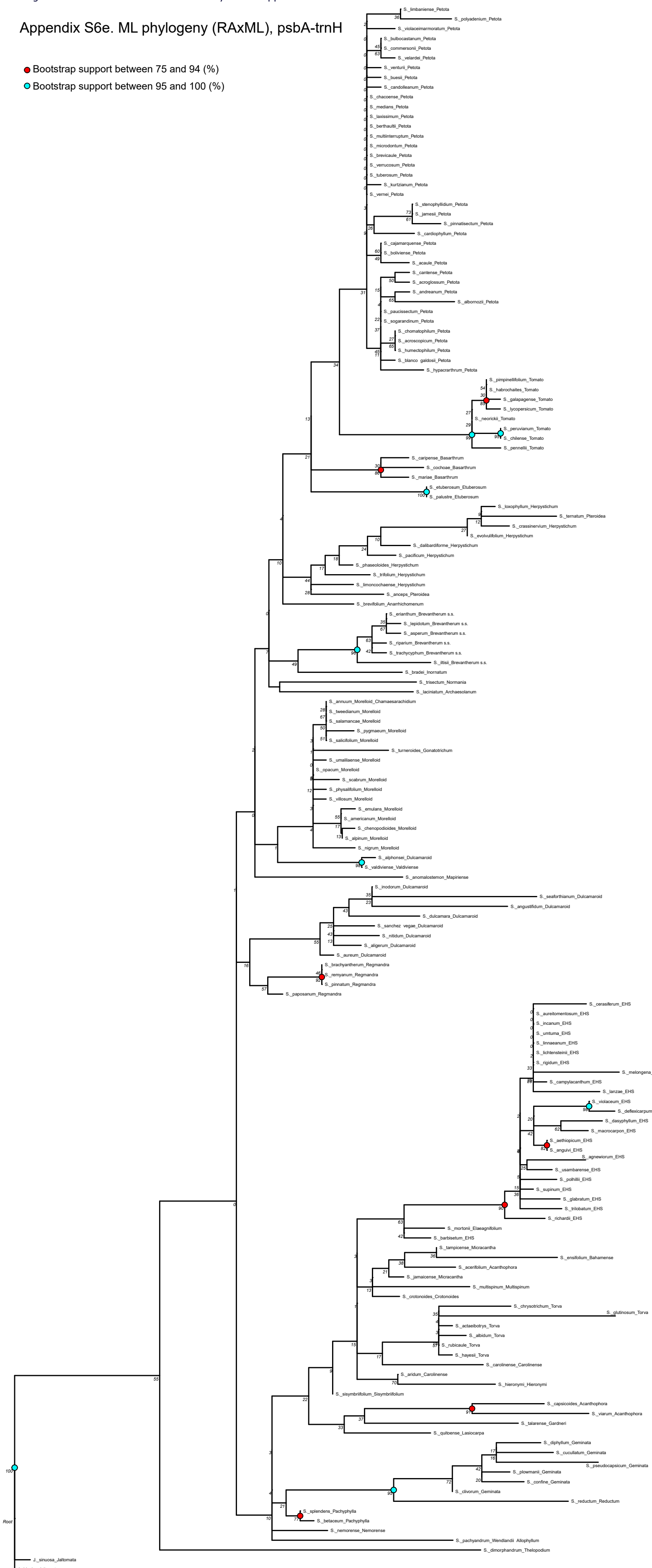
Appendix S6d. ML phylogeny (RAxML), ndhF-rpL32

- Bootstrap support between 75 and 94 (%)
- Bootstrap support between 95 and 100 (%)



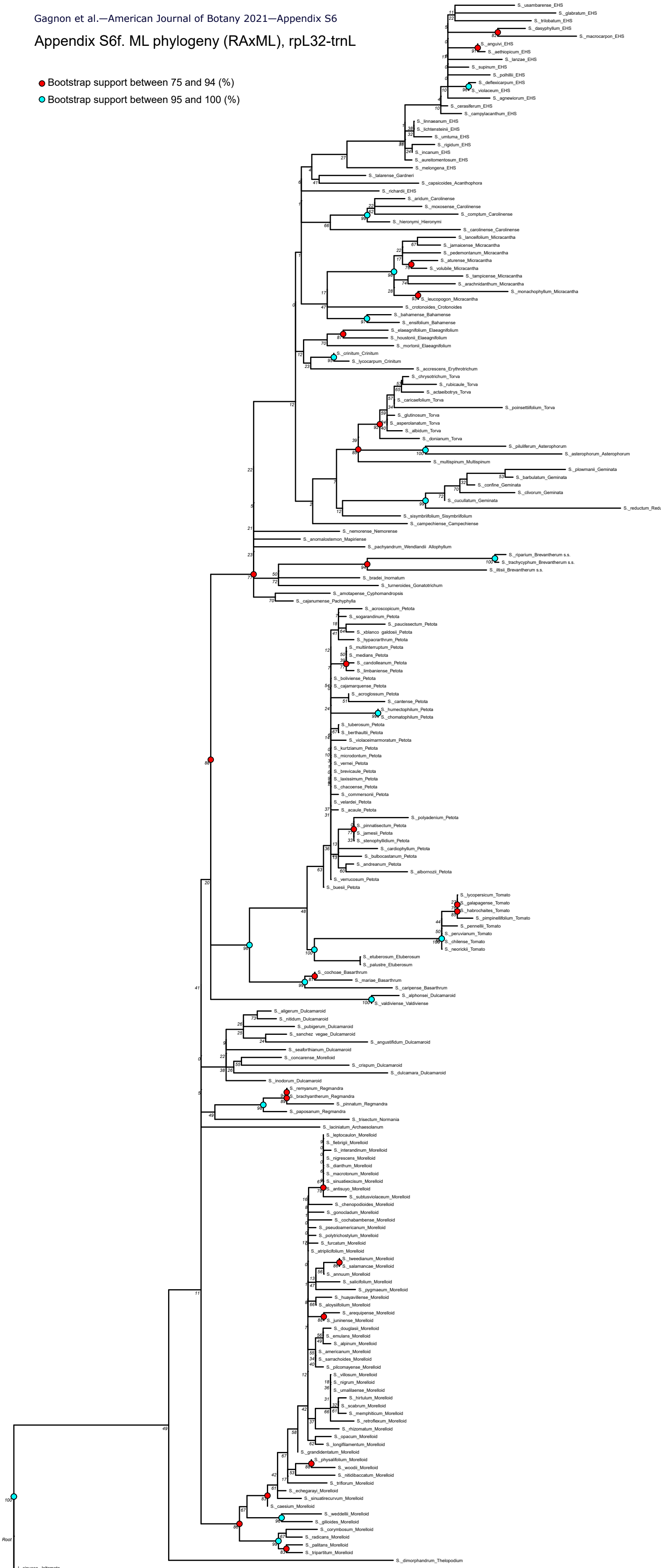
Appendix S6e. ML phylogeny (RAxML), psbA-trnH

- Bootstrap support between 75 and 94 (%)
- Bootstrap support between 95 and 100 (%)



Appendix S6f. ML phylogeny (RAxML), rpL32-trnL

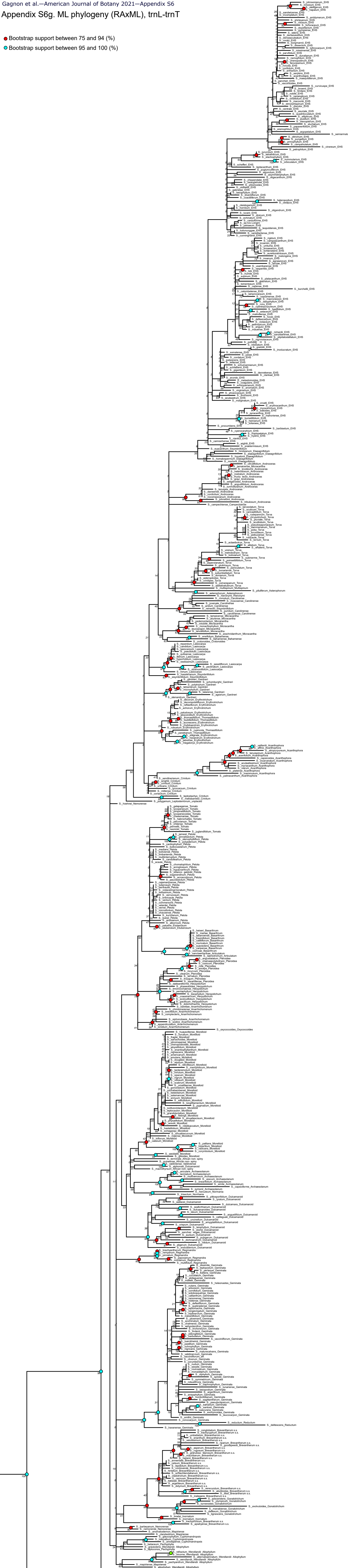
- Bootstrap support between 75 and 94 (%)
- Bootstrap support between 95 and 100 (%)



J. sinuosa_Jaltomata
J. bicolor_Jaltomata

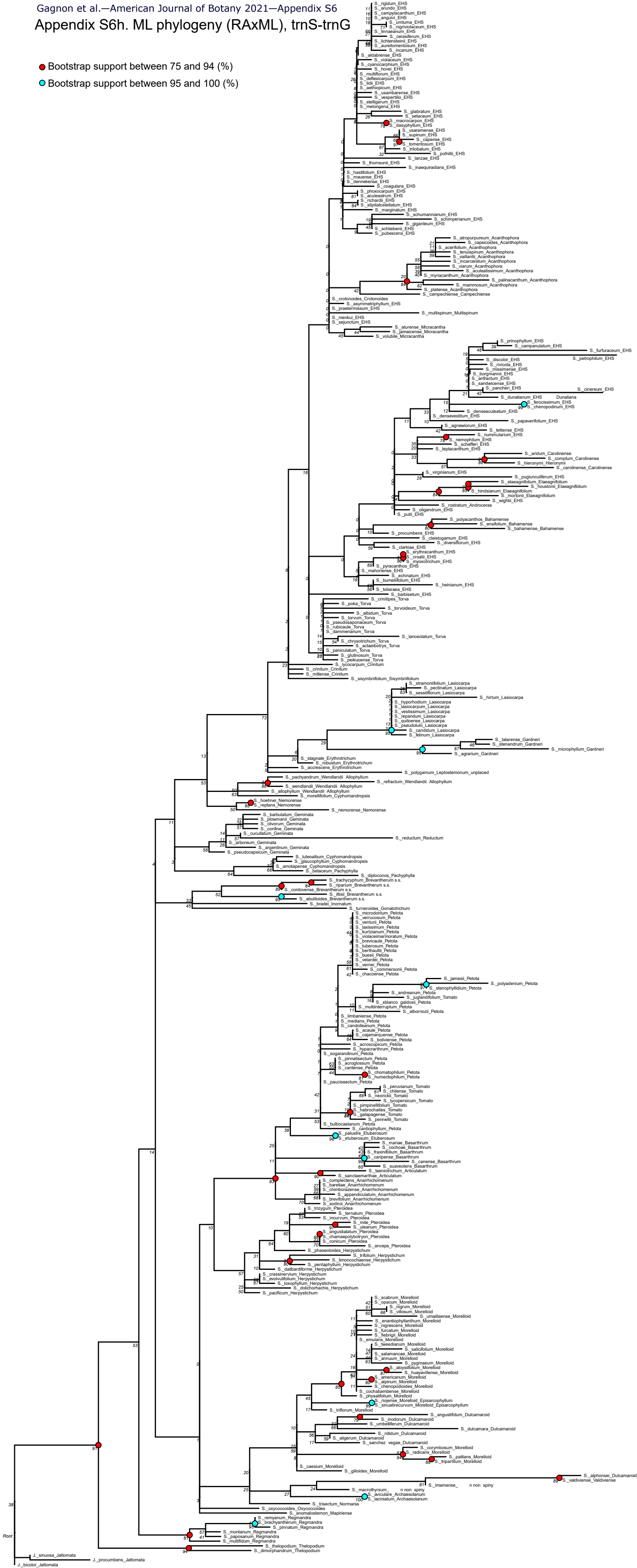
Appendix S6g. ML phylogeny (RAxML), trnL-trnT

- Bootstrap support between 75 and 94 (%)
- Bootstrap support between 95 and 100 (%)



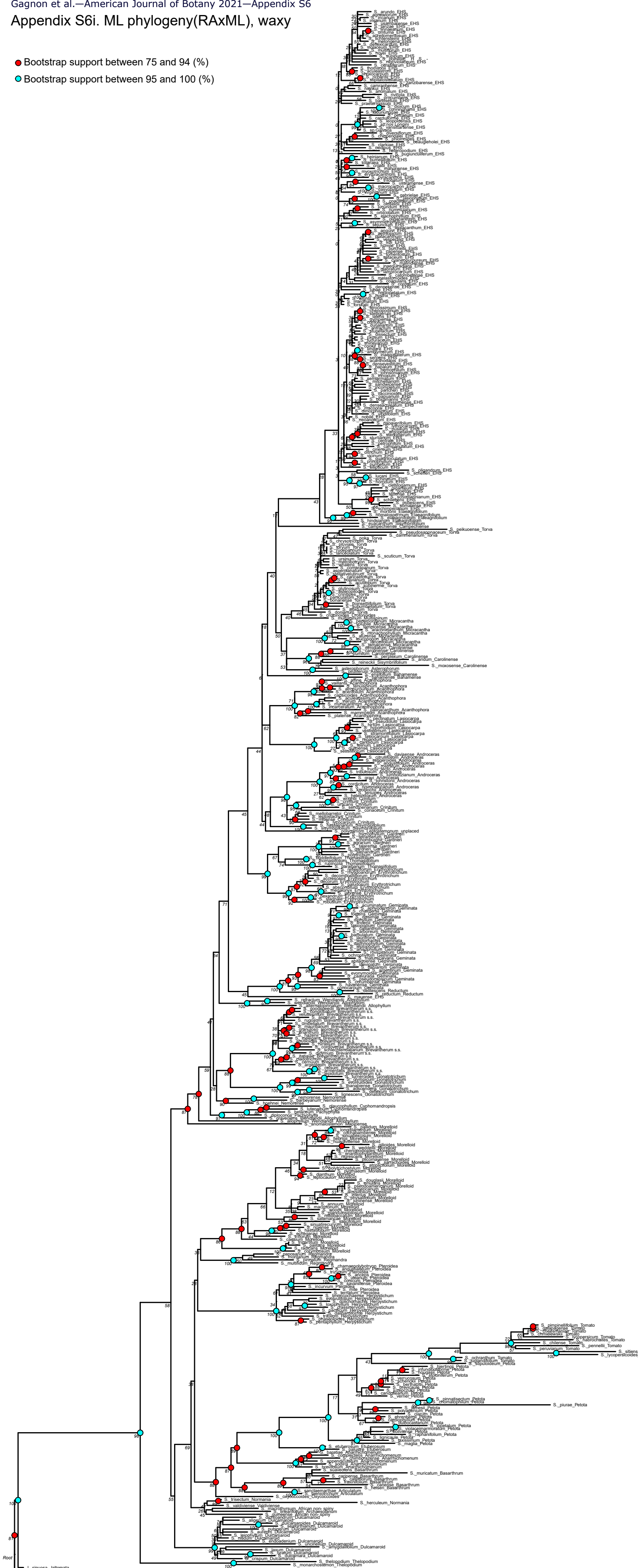
Appendix S6h. ML phylogeny (RAxML), trnS-trnG

- Bootstrap support between 75 and 94 (%)
- Bootstrap support between 95 and 100 (%)



Gagnon et al.—American Journal of Botany 2021—Appendix S6i
 Appendix S6i. ML phylogeny(RAxML), waxy

- Bootstrap support between 75 and 94 (%)
- Bootstrap support between 95 and 100 (%)



Appendix S6j. ML phylogeny (RAxML), seven plastid loci

- Bootstrap support between 75 and 94 (%)
- Bootstrap support between 95 and 100 (%)

