

Appendix S16a. Polytomy test with Astral-III

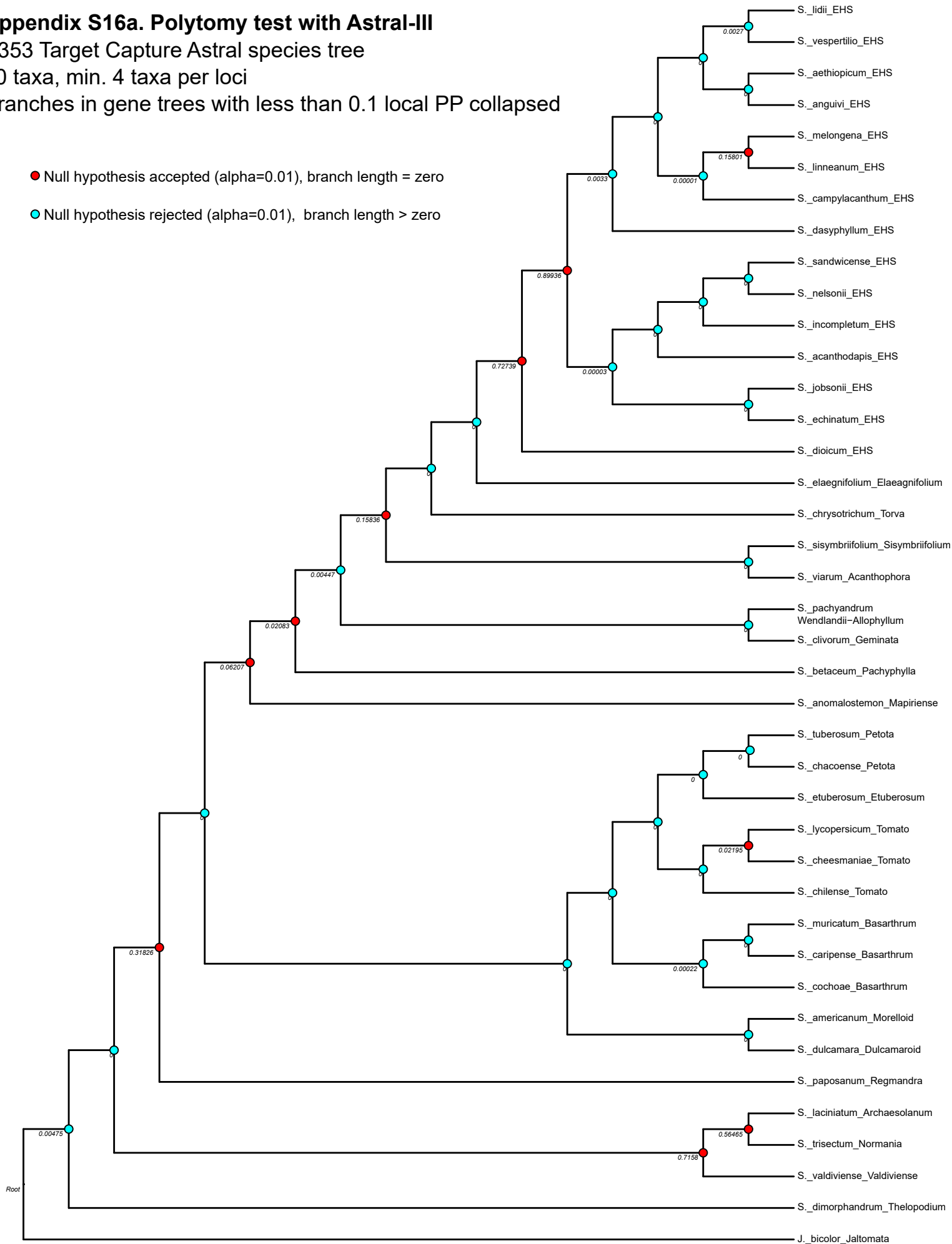
A353 Target Capture Astral species tree

40 taxa, min. 4 taxa per loci

Branches in gene trees with less than 0.1 local PP collapsed

● Null hypothesis accepted (alpha=0.01), branch length = zero

● Null hypothesis rejected (alpha=0.01), branch length > zero



Appendix S16b. Polytomy test with Astral-III

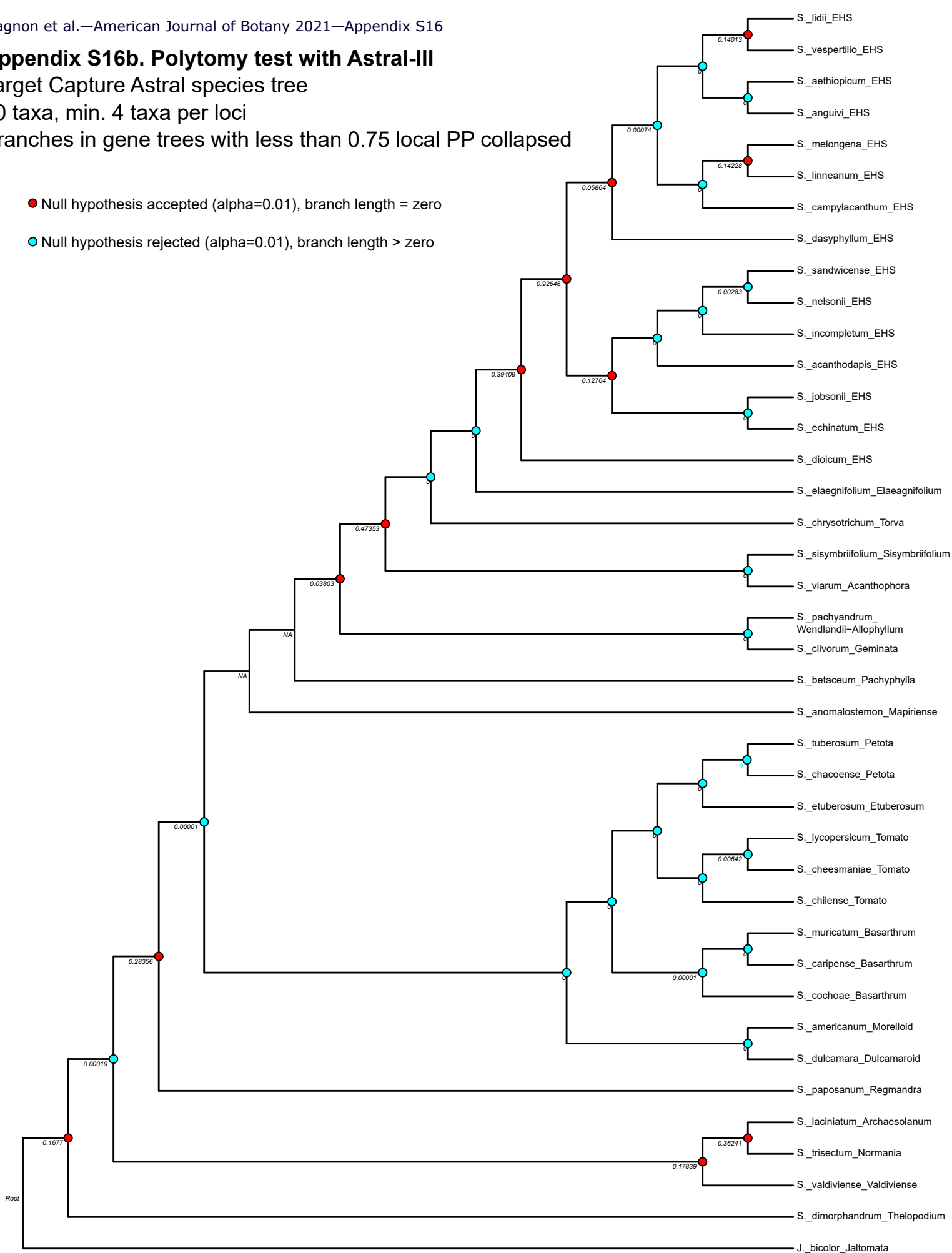
Target Capture Astral species tree

40 taxa, min. 4 taxa per loci

Branches in gene trees with less than 0.75 local PP collapsed

● Null hypothesis accepted (alpha=0.01), branch length = zero

● Null hypothesis rejected (alpha=0.01), branch length > zero



Appendix S16c. Polytomy test with Astral-III

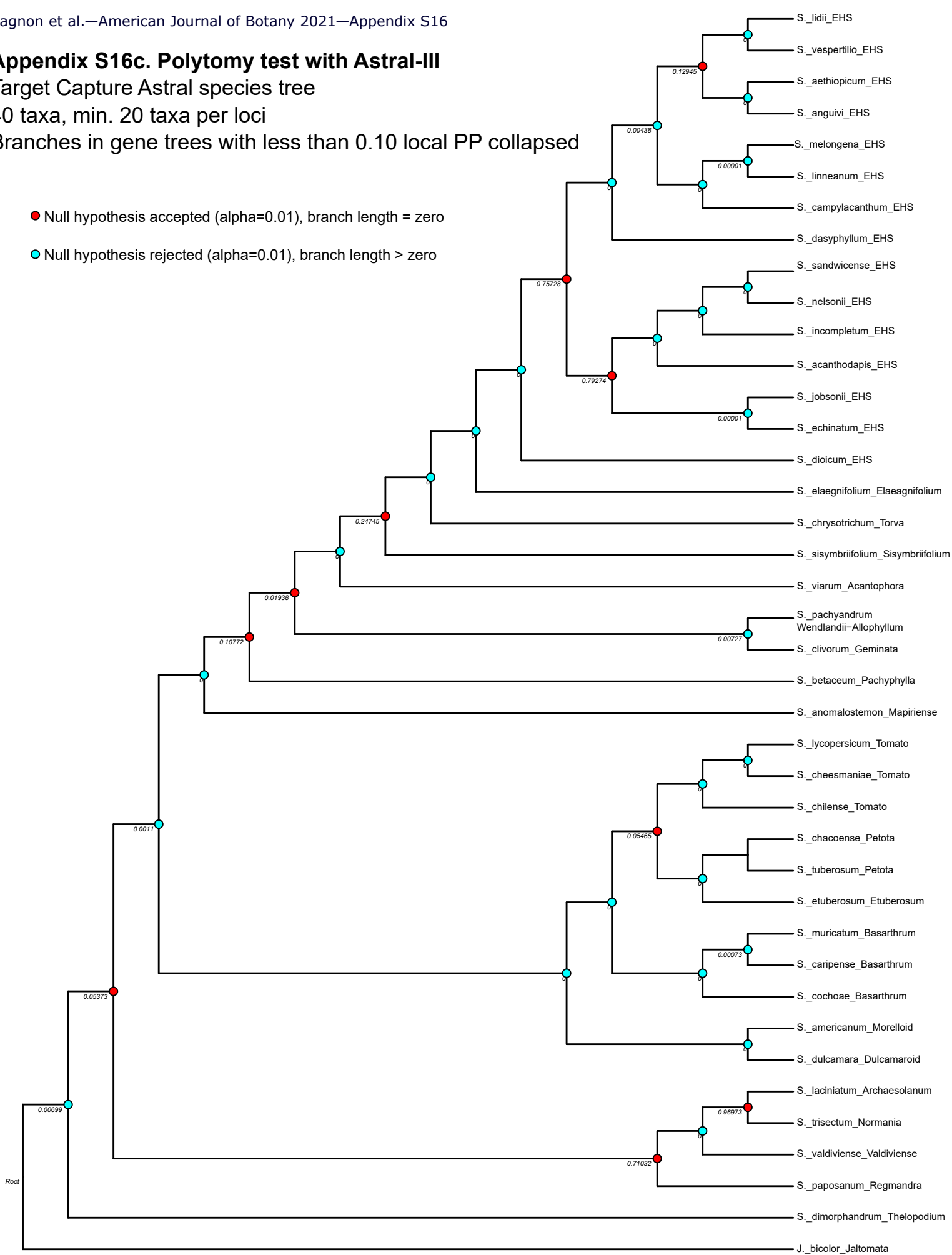
Target Capture Astral species tree

40 taxa, min. 20 taxa per loci

Branches in gene trees with less than 0.10 local PP collapsed

● Null hypothesis accepted (alpha=0.01), branch length = zero

● Null hypothesis rejected (alpha=0.01), branch length > zero



Appendix S16d. Polytomytest with Astral-III

Target Capture Astral species tree

40 taxa, min. 20 taxa per loci

Branches in gene trees with less than 0.75 local PP collapsed

● Null hypothesis accepted (alpha=0.01), branch length = zero

● Null hypothesis rejected (alpha=0.01), branch length > zero

