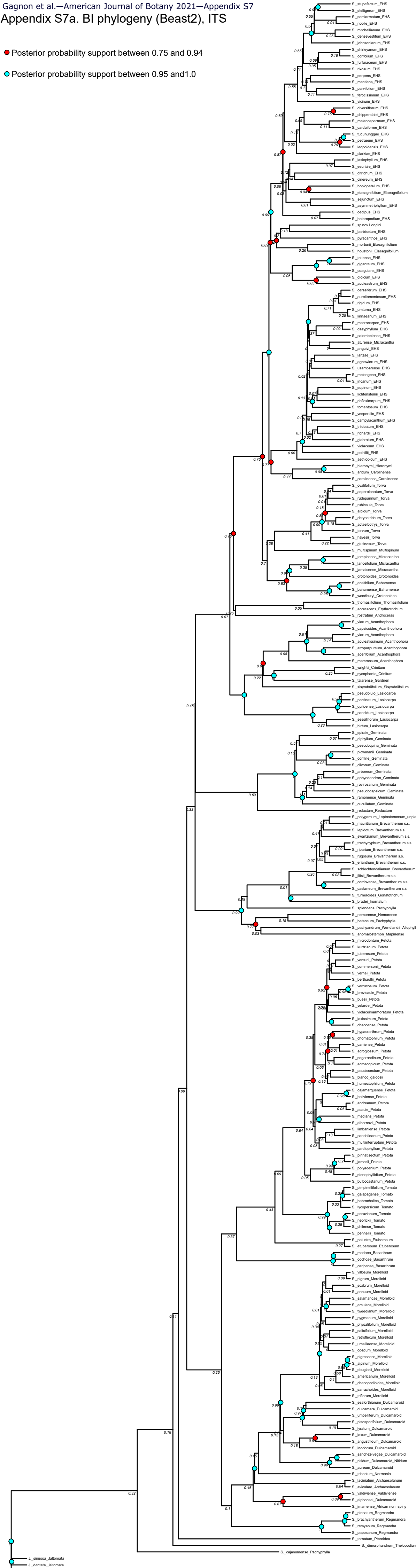


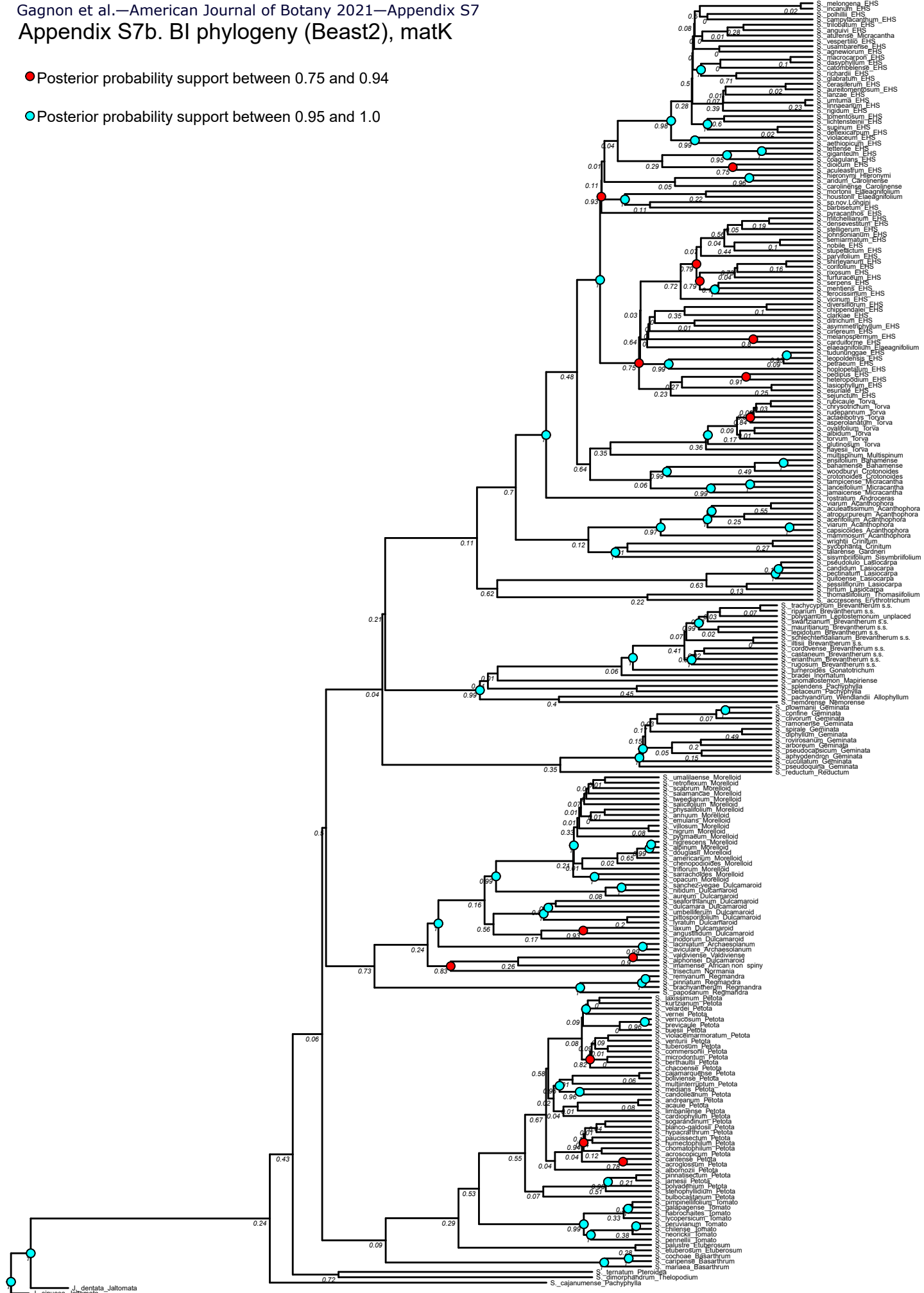
- Posterior probability support between 0.75 and 0.94
- Posterior probability support between 0.95 and 1.0



J. sinuosa_laltomata
 J. denilata_laltomata
 J. bicolor_laltomata

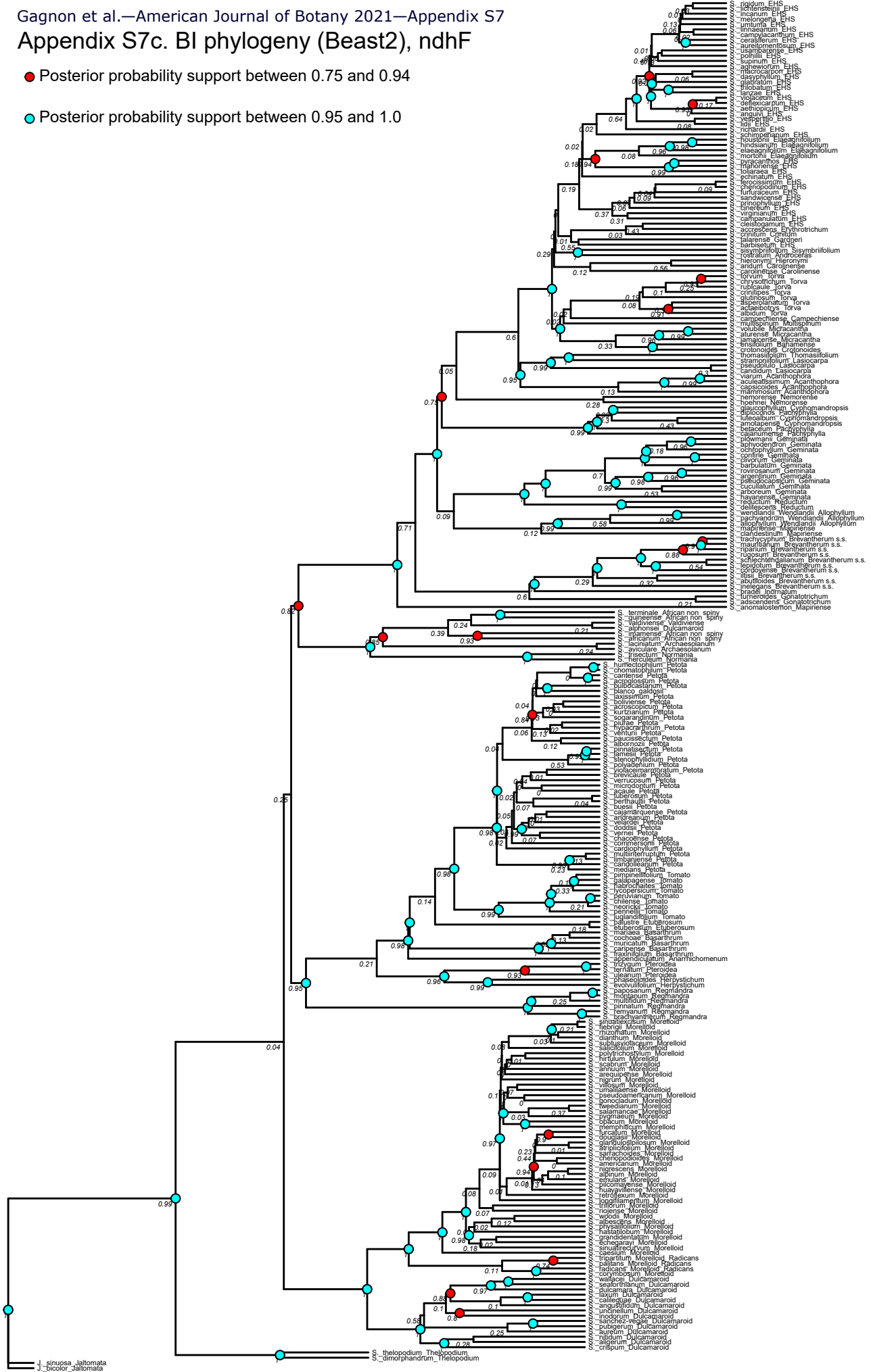
● Posterior probability support between 0.75 and 0.94

● Posterior probability support between 0.95 and 1.0



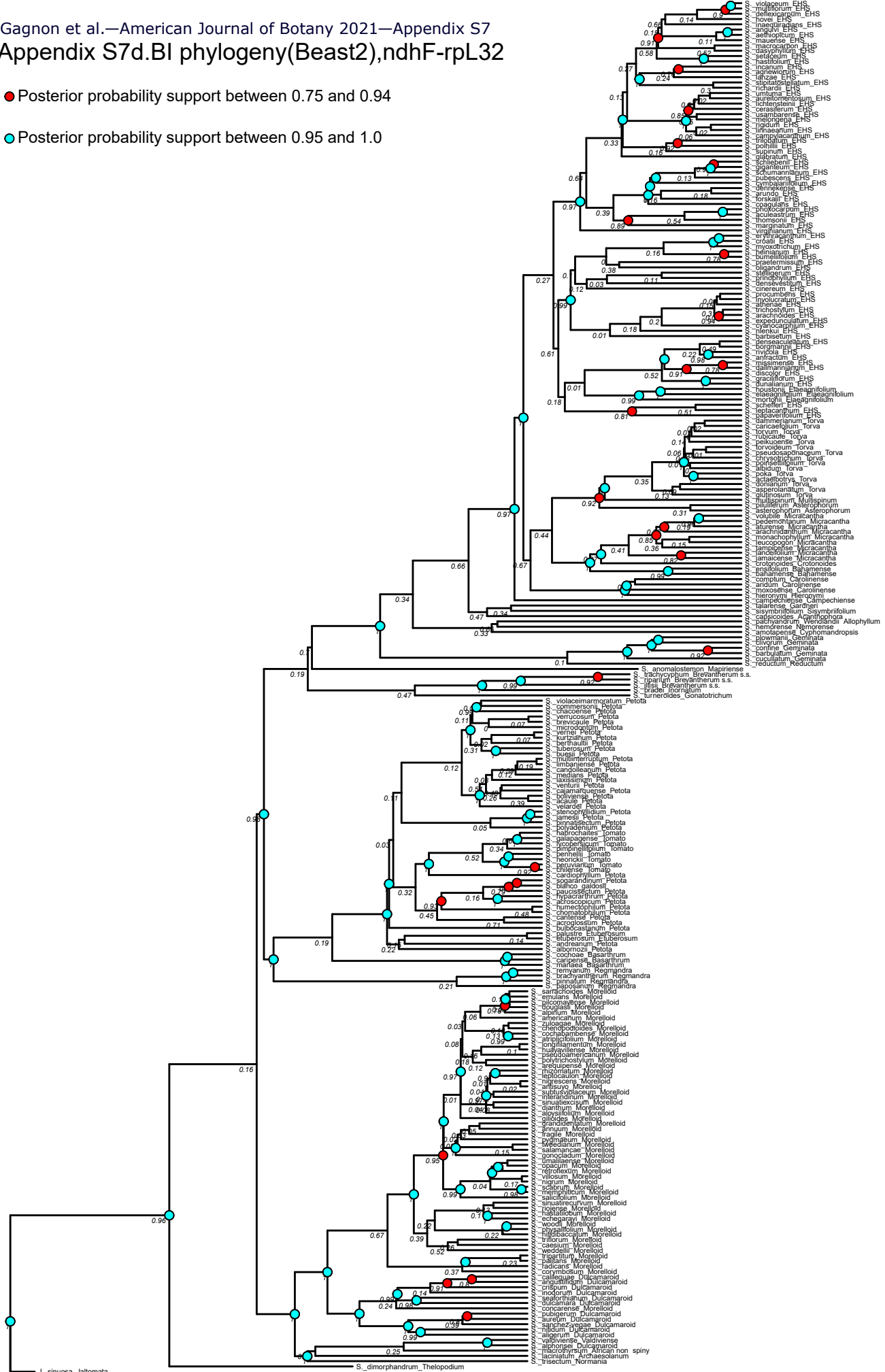
● Posterior probability support between 0.75 and 0.94

● Posterior probability support between 0.95 and 1.0



Gagnon et al.—American Journal of Botany 2021—Appendix S7
 Appendix S7d.BI phylogeny(Beast2),ndhF-rpL32

- Posterior probability support between 0.75 and 0.94
- Posterior probability support between 0.95 and 1.0



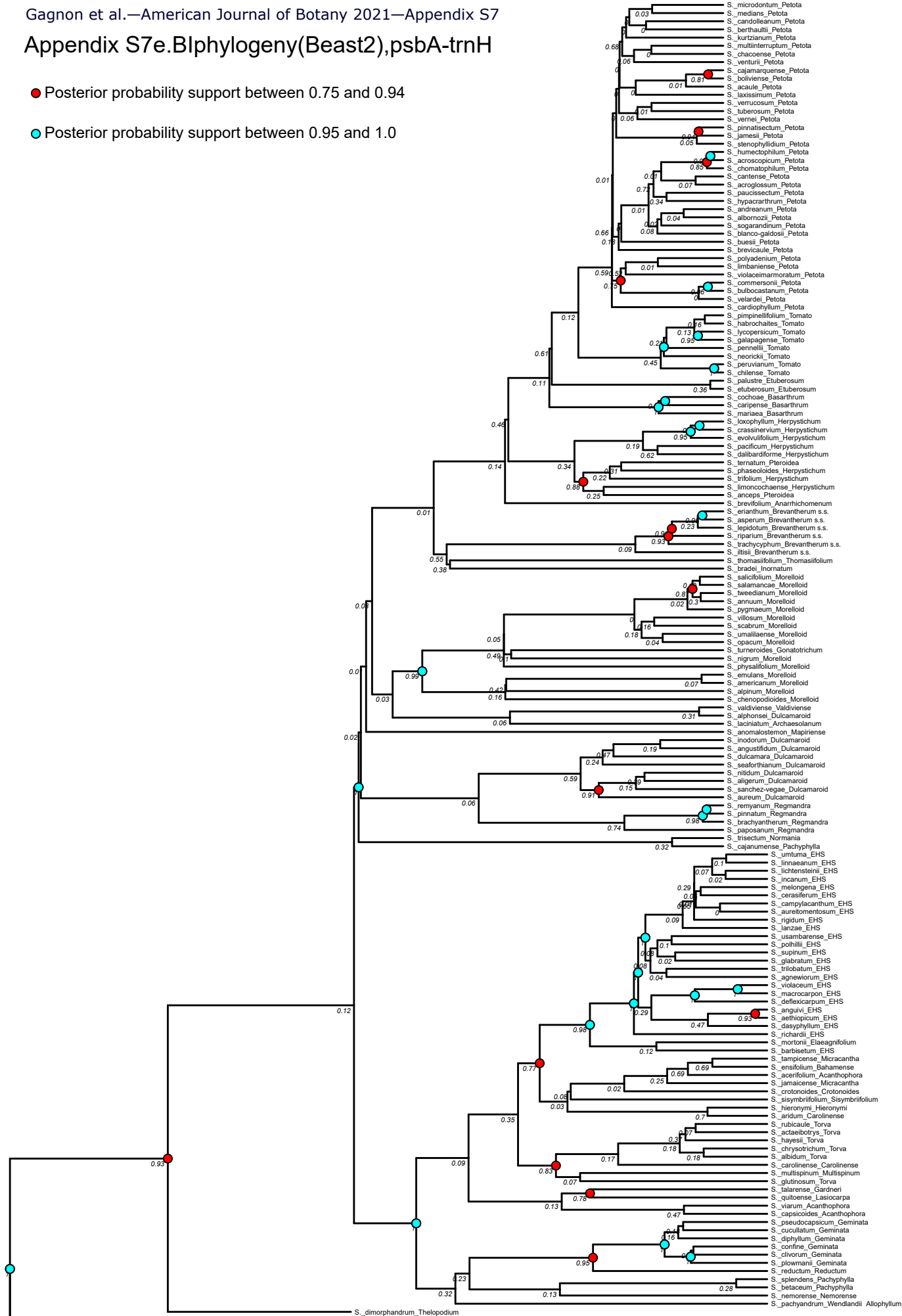
J. sinuosa, latifoloma
 J. bicolor, latifoloma

S. dimorphandrum, Thelopodium

Appendix S7e.B|phylogeny(Beast2),psbA-trnH

● Posterior probability support between 0.75 and 0.94

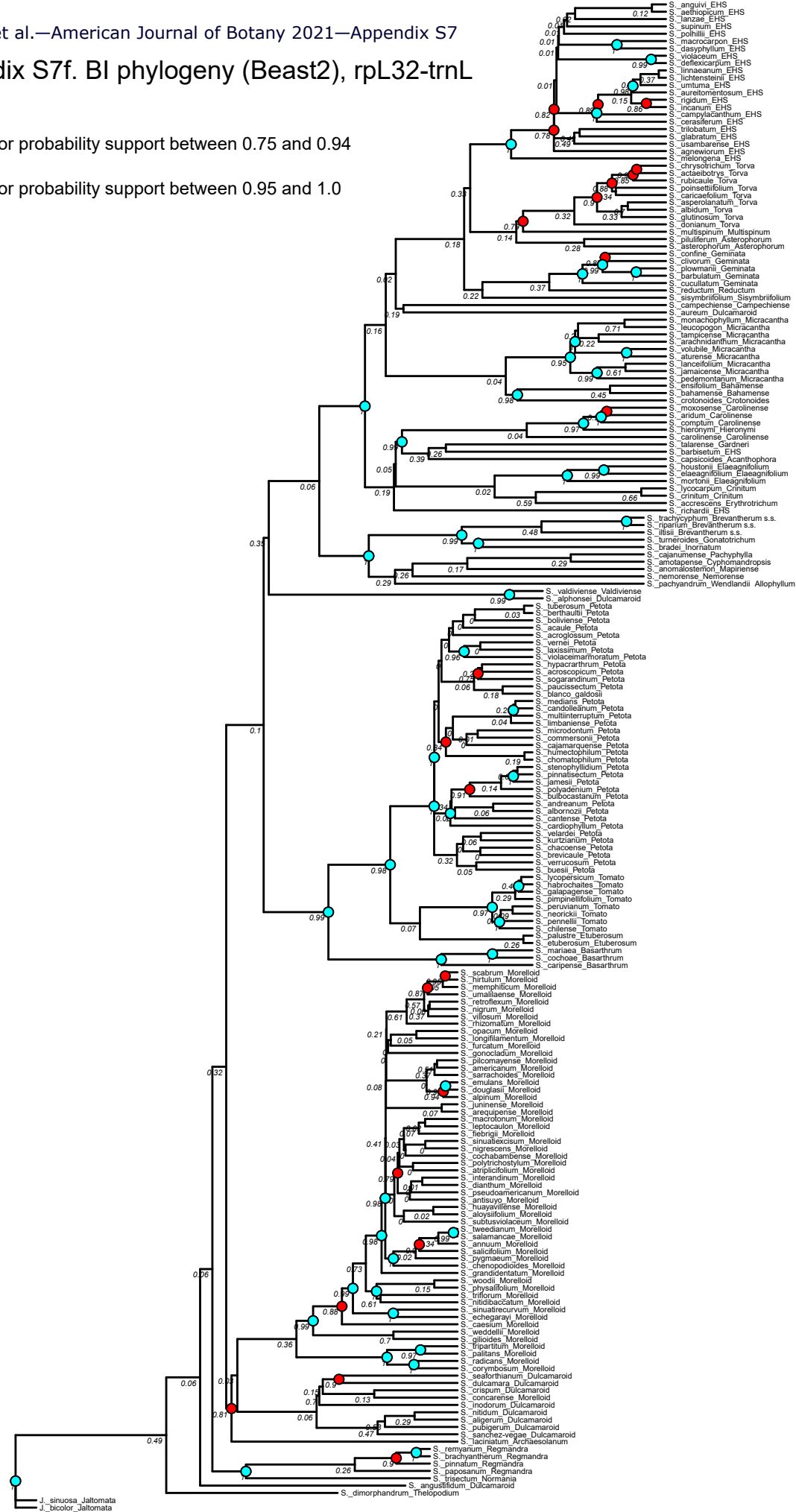
● Posterior probability support between 0.95 and 1.0



Appendix S7f. BI phylogeny (Beast2), rpL32-trnL

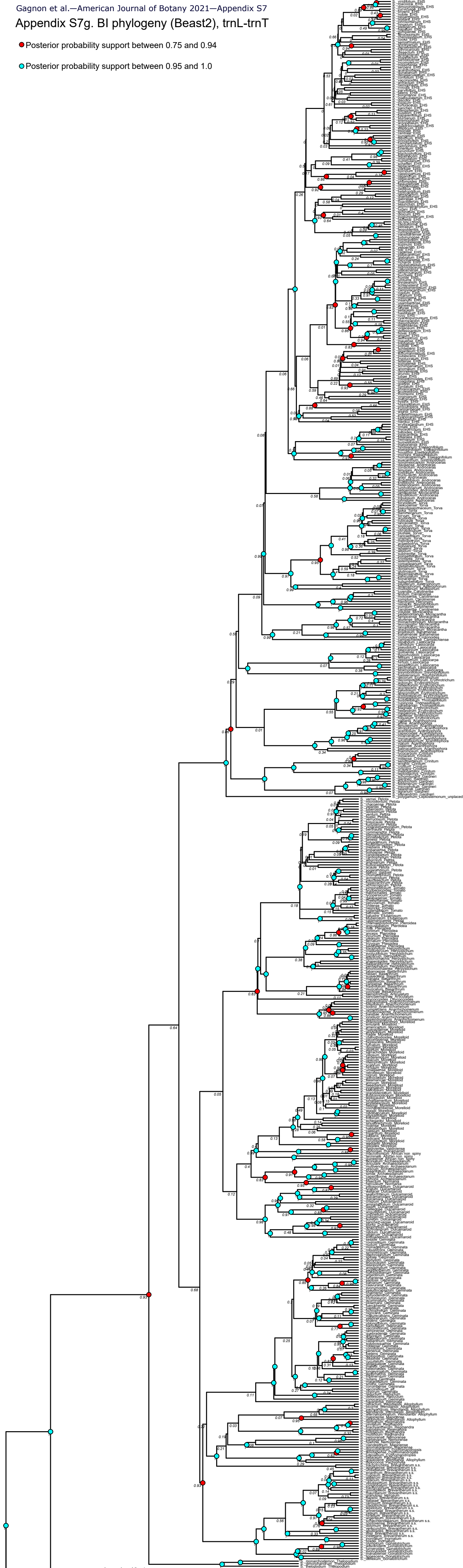
● Posterior probability support between 0.75 and 0.94

● Posterior probability support between 0.95 and 1.0



Appendix S7g. BI phylogeny (Beast2), trnL-trnT

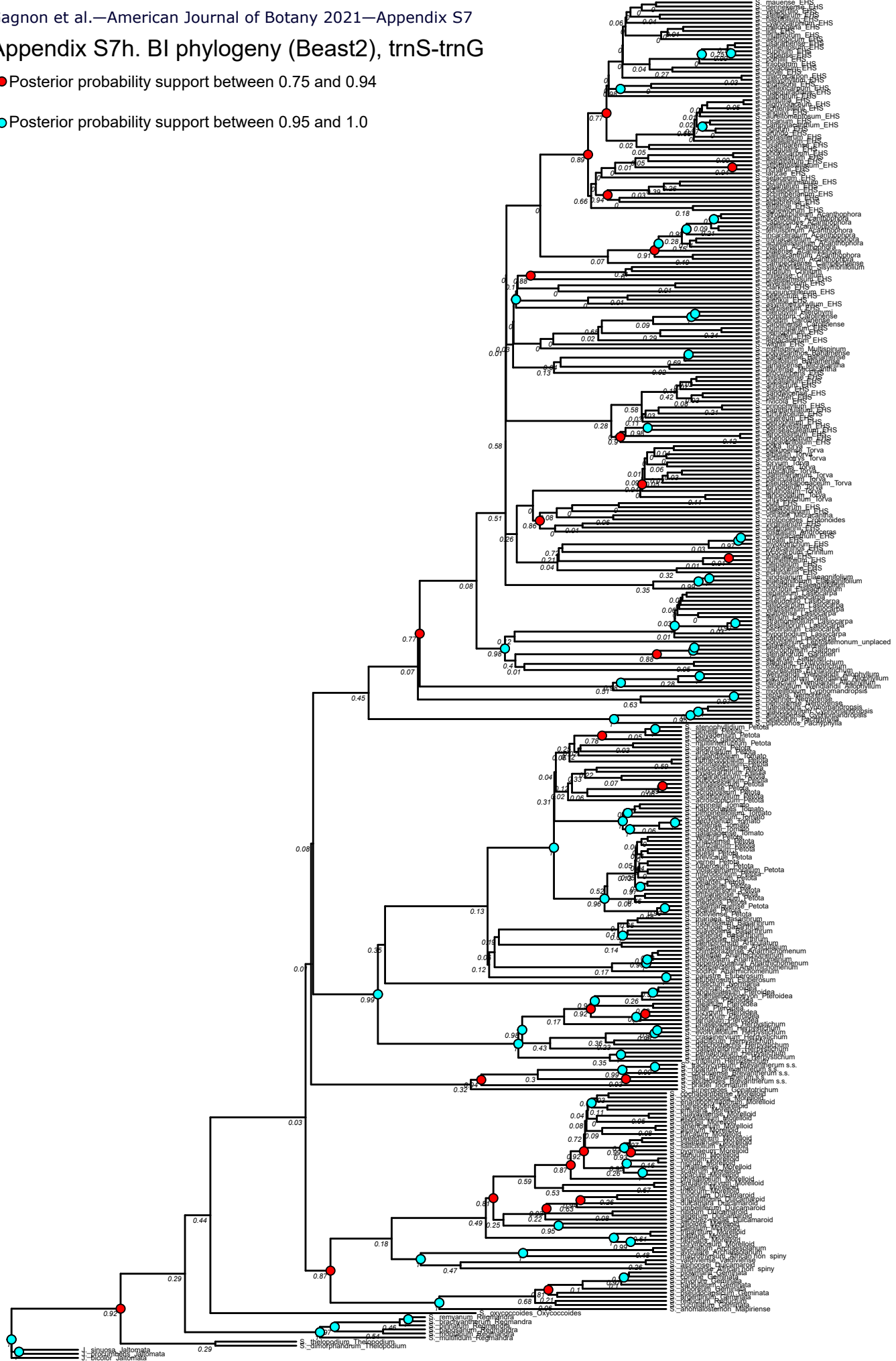
- Posterior probability support between 0.75 and 0.94
- Posterior probability support between 0.95 and 1.0



Appendix S7h. BI phylogeny (Beast2), trnS-trnG

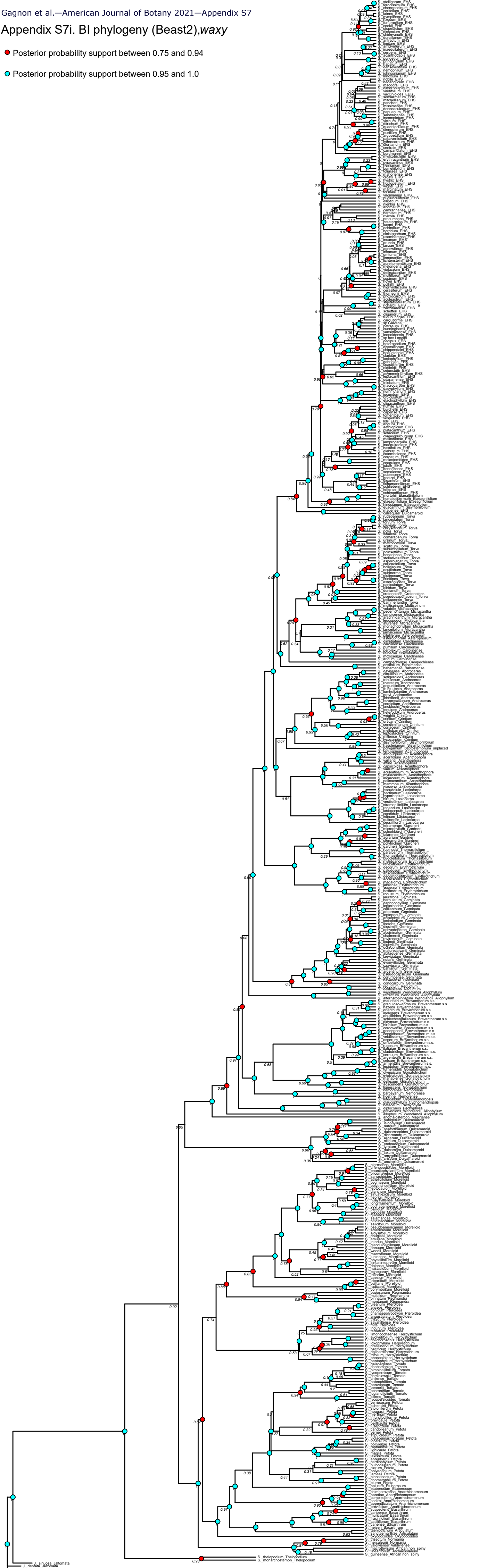
● Posterior probability support between 0.75 and 0.94

● Posterior probability support between 0.95 and 1.0



Appendix S7i. BI phylogeny (Beast2), waxy

- Posterior probability support between 0.75 and 0.94
- Posterior probability support between 0.95 and 1.0



Appendix S7i. BI phylogeny (Beast2),plastid

- Posterior probability support between 0.75 and 0.94
- Posterior probability support between 0.95 and 1.0

