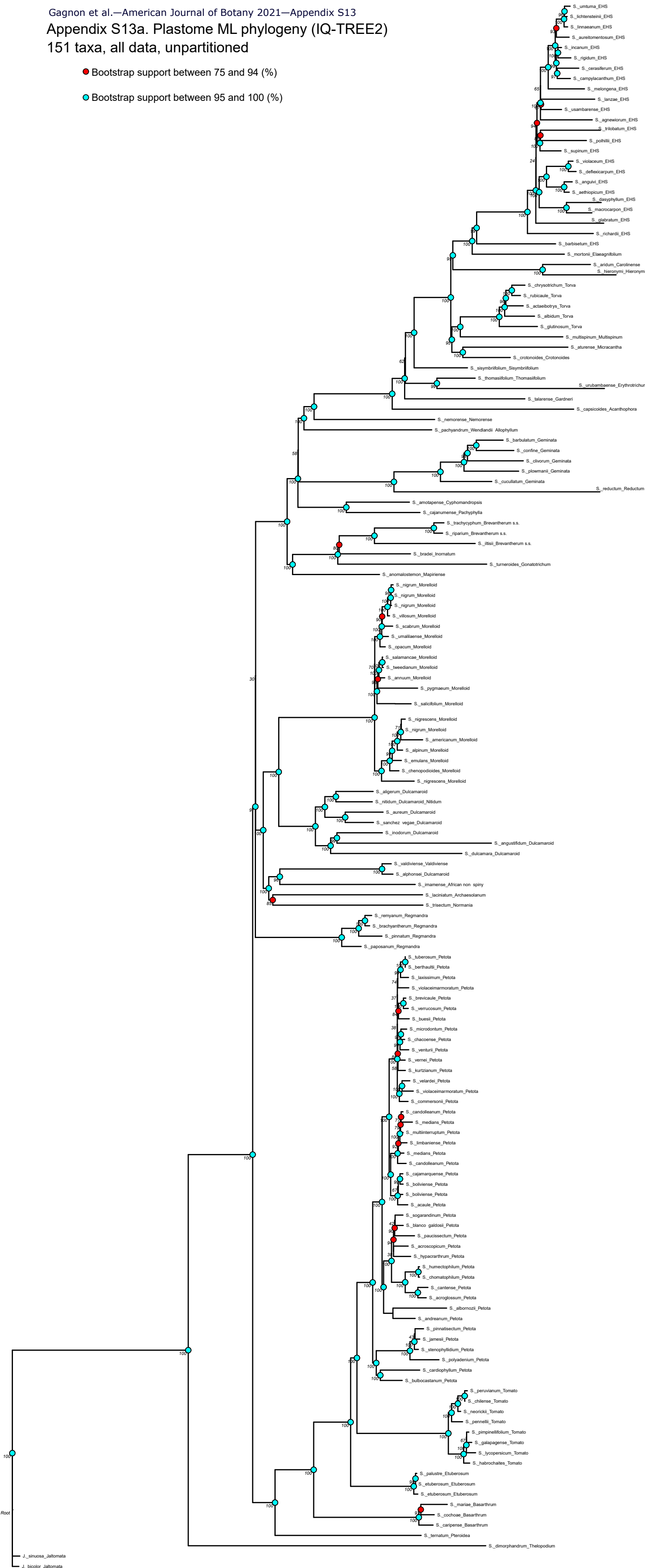


Appendix S13a. Plastome ML phylogeny (IQ-TREE2)

151 taxa, all data, unpartitioned

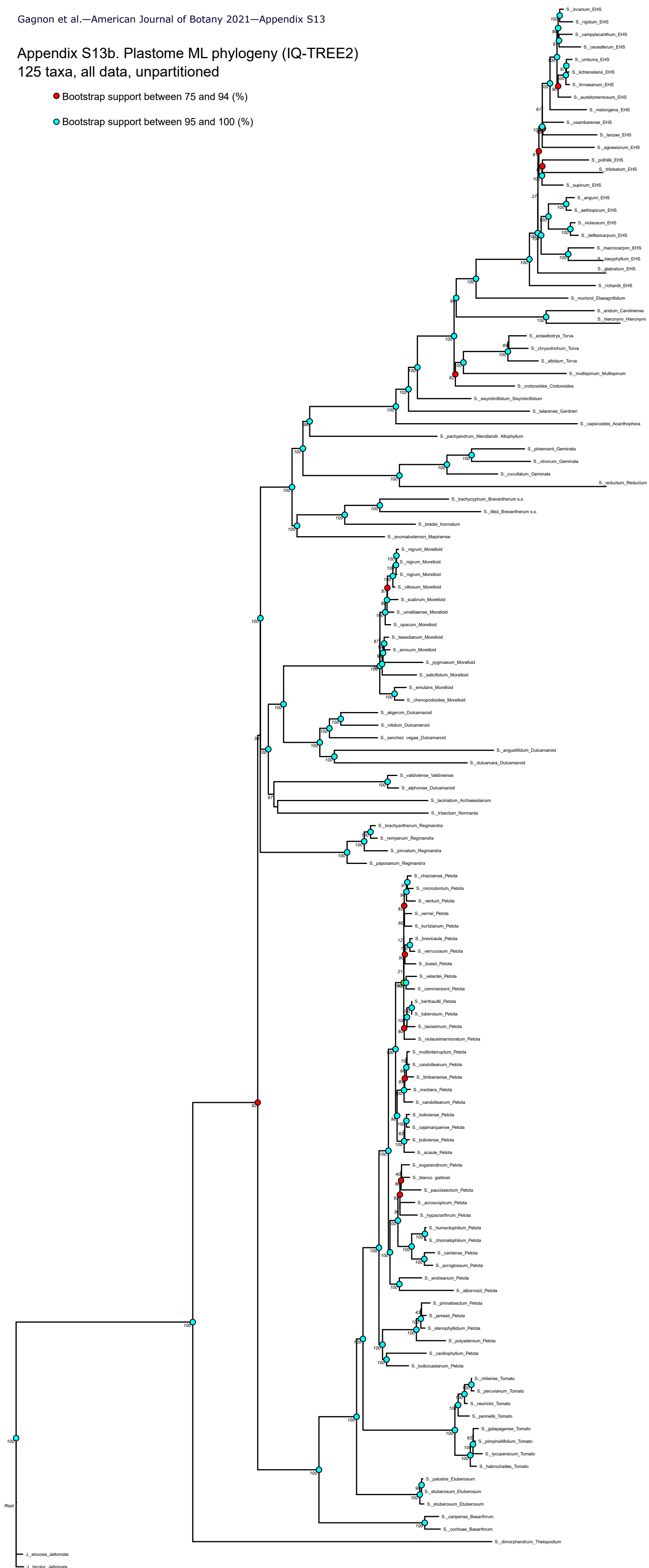
● Bootstrap support between 75 and 94 (%)

● Bootstrap support between 95 and 100 (%)



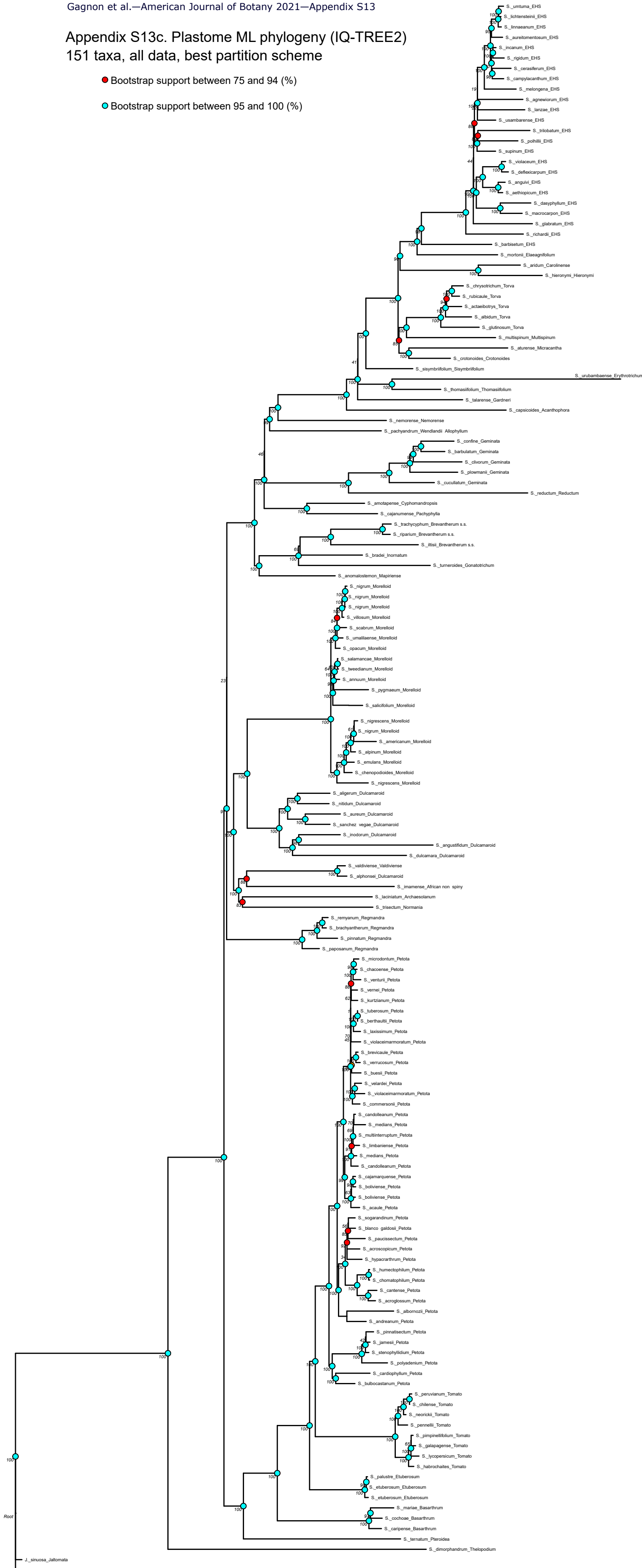
Appendix S13b. Plastome ML phylogeny (IQ-TREE2)
125 taxa, all data, unpartitioned

- Bootstrap support between 75 and 94 (%)
- Bootstrap support between 95 and 100 (%)



Appendix S13c. Plastome ML phylogeny (IQ-TREE2) 151 taxa, all data, best partition scheme

- Bootstrap support between 75 and 94 (%)
- Bootstrap support between 95 and 100 (%)



Root

J. sinuosa_Jaltomata
J. bicolor_Jaltomata

Appendix S13d.Plastome ML phylogeny (IQ-TREE2)

125 taxa, all data, best partition scheme

- Bootstrap support between 75 and 94 (%)
- Bootstrap support between 95 and 100 (%)

