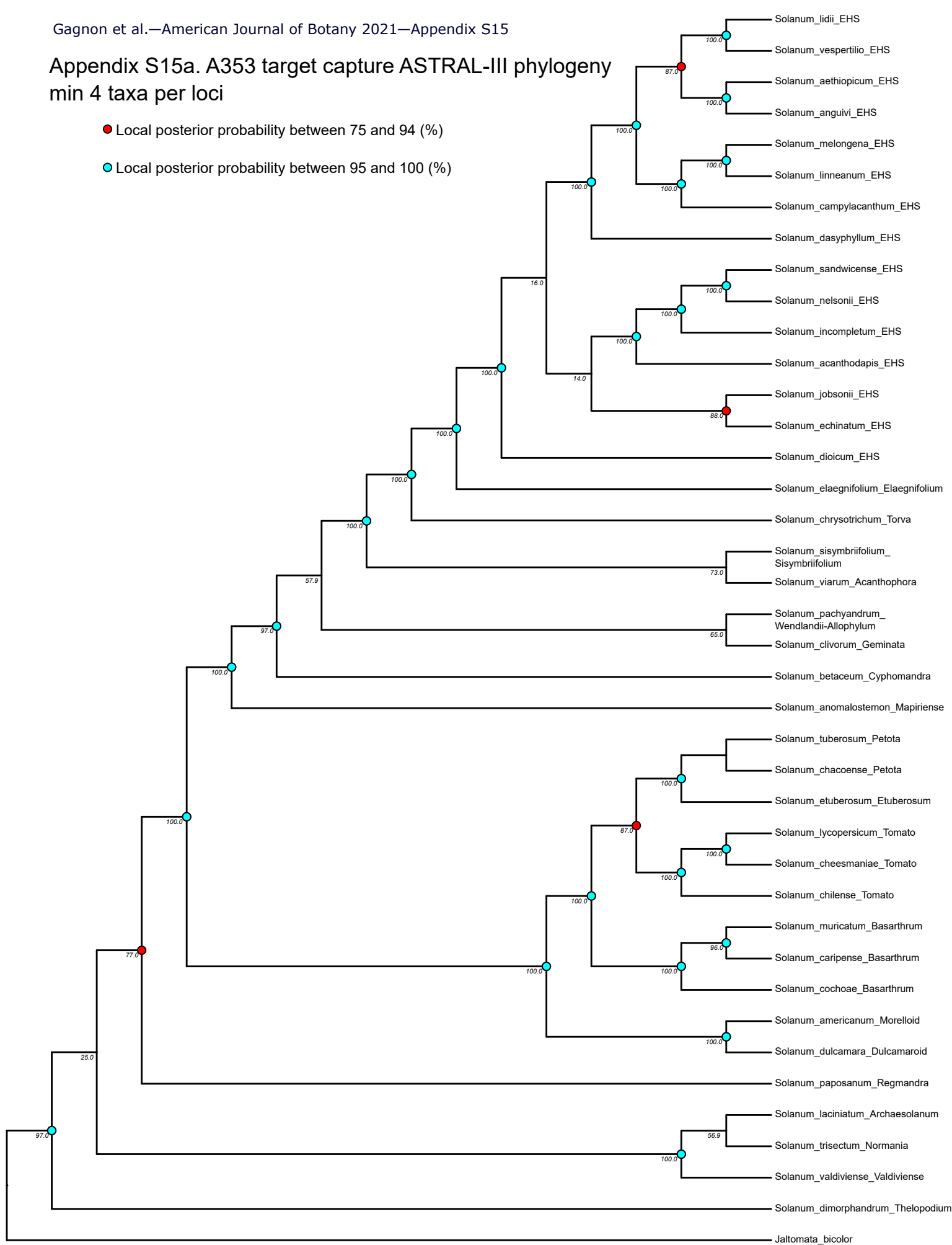


Appendix S15a. A353 target capture ASTRAL-III phylogeny min 4 taxa per loci

- Local posterior probability between 75 and 94 (%)
- Local posterior probability between 95 and 100 (%)



Appendix S15b. A353 target capture ASTRAL-III phylogeny min 20 taxa per loci, multi-locus bootstrapping

- Local posterior probability between 75 and 94 (%)
- Local posterior probability between 95 and 100 (%)

