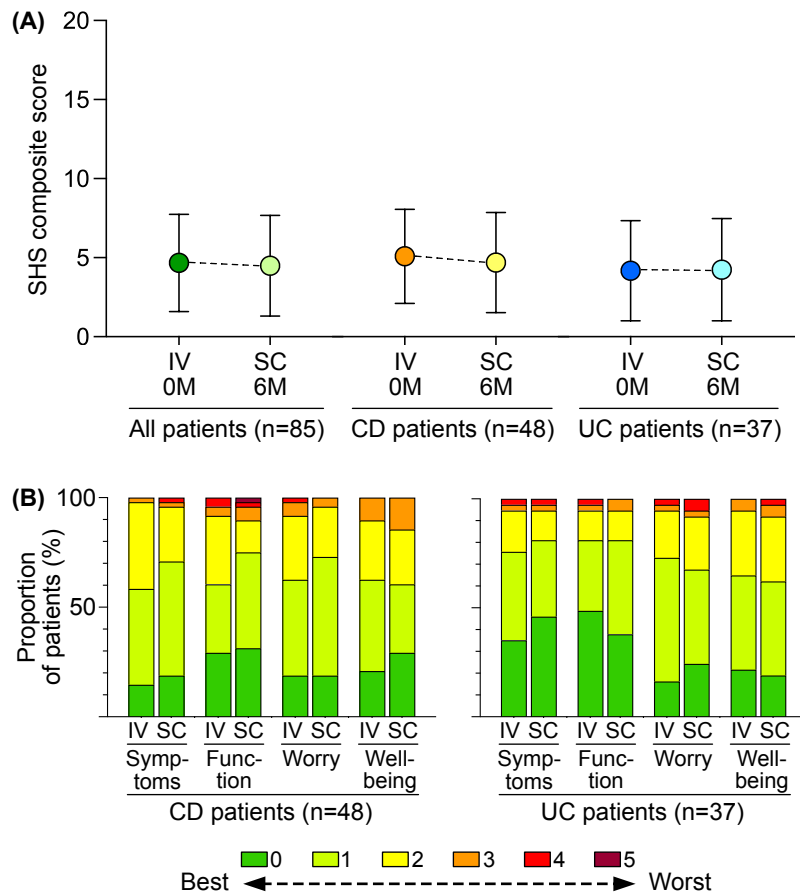


Supplementary Figure 1.



Supplementary Figure 1. Comparisons of health-related quality-of-life measures based on the Short Health Scale (SHS) at baseline and 6 months after switch from IV to SC vedolizumab treatment. A) SHS composite scores (range 0-20; high values signify low quality-of-life) presented as mean values with SD. B) Individual SHS items (range 0-5; high values signify low quality-of-life) including symptom burden, social function, disease-related worry, and general well-being. Data are presented as proportions of patients (percentages) who reported a specific response option (0-5) at baseline (IV) and follow-up (SC), respectively. Abbreviations: CD, Crohn's disease; IV, intravenous; M, months; SC, subcutaneous; SD, standard deviation; SHS, Short Health Scale; UC, ulcerative colitis.