

Supplementary table and figure legends

Table S1: Search terms used for the systematic review of the literature on COPD in the Global Burden of Disease 2019 Study

Table S2: Selected covariates for the CODEm models in the chronic obstructive pulmonary disease estimation process

Table S3: Health states of chronic obstructive pulmonary disease and the associated disability weights from the Global Burden of Disease 2019 Study

Table S4: Prevalent cases of chronic obstructive pulmonary disease in 1990 and 2019 and the percentage change in the age-standardised rates (ASRs) per 100,000, by location (Generated from data available from <http://ghdx.healthdata.org/gbd-results-tool>)

Table S5: Deaths due to chronic obstructive pulmonary disease in 1990 and 2019 and the percentage change in the age-standardised rates (ASRs) per 100,000, by location (Generated from data available from <http://ghdx.healthdata.org/gbd-results-tool>)

Table S6: DALYs due to chronic obstructive pulmonary disease in 1990 and 2019 and the percentage change in the age-standardised rates (ASRs) per 100,000, by location (Generated from data available from <http://ghdx.healthdata.org/gbd-results-tool>)

Figure S1: The age-standardised point prevalence of chronic obstructive pulmonary disease in 2019 for the 21 Global Burden of Disease regions, by sex. (Generated from data available from <http://ghdx.healthdata.org/gbd-results-tool>).

Figure S2: The age-standardised death rates of chronic obstructive pulmonary disease in 2019 for the 21 Global Burden of Disease regions, by sex. (Generated from data available from <http://ghdx.healthdata.org/gbd-results-tool>).

Figure S3: The age-standardised DALY rates of chronic obstructive pulmonary disease in 2019 for the 21 Global Burden of Disease regions, by sex. DALY=disability adjusted life years. (Generated from data available from <http://ghdx.healthdata.org/gbd-results-tool>).

Figure S4: The percentage change in the age-standardised point prevalence of chronic obstructive pulmonary disease from 1990 to 2019 for the 21 Global Burden of Disease regions, by sex. (Generated from data available from <http://ghdx.healthdata.org/gbd-results-tool>).

Figure S5: The percentage change in the age-standardised death rates of chronic obstructive pulmonary disease from 1990 to 2019 for the 21 Global Burden of Disease regions, by sex. (Generated from data available from <http://ghdx.healthdata.org/gbd-results-tool>).

Figure S6: The percentage change in the age-standardised DALY rates of chronic obstructive pulmonary disease from 1990 to 2019 for the 21 Global Burden of Disease regions, by sex. DALY=disability adjusted life years. (Generated from data available from <http://ghdx.healthdata.org/gbd-results-tool>).

Figure S7: Age-standardised DALY rate of chronic obstructive pulmonary disease per 100,000 population in 2019, by country. DALY=disability adjusted life years. (Generated from data available from <http://ghdx.healthdata.org/gbd-results-tool>).

Figure S8: Global number of deaths and death rate of chronic obstructive pulmonary disease per 100,000 population, by age and sex, in 2019; Dotted and dashed lines indicate 95% upper and

lower uncertainty intervals, respectively. (Generated from data available from <http://ghdx.healthdata.org/gbd-results-tool>).

Figure S9: Global number of DALYs and DALY rate of chronic obstructive pulmonary disease per 100,000 population, by age and sex, in 2019; Dotted and dashed lines indicate 95% upper and lower uncertainty intervals, respectively. DALY=disability adjusted life years. (Generated from data available from <http://ghdx.healthdata.org/gbd-results-tool>).

Figure S10: Age-standardised DALY rates of chronic obstructive pulmonary disease for 204 countries and territories, by SDI, in 2019; Expected values based on the Socio-demographic Index and disease rates in all locations are shown as the black line. Each point shows the observed age-standardised DALY rate for each country in 2019. DALY=disability adjusted life years. SDI= Socio-demographic Index (Generated from data available from <http://ghdx.healthdata.org/gbd-results-tool>).

Figure S11: Percentage of DALYs due to chronic obstructive pulmonary disease attributable to risk factors among males for 21 GBD regions in 2019. DALY=disability adjusted life years (Generated from data available from <http://ghdx.healthdata.org/gbd-results-tool>).

Figure S12: Percentage of DALYs due to chronic obstructive pulmonary disease attributable to risk factors among females for 21 GBD regions in 2019. DALY=disability adjusted life years (Generated from data available from <http://ghdx.healthdata.org/gbd-results-tool>).

Figure S13: Percentage of DALYs due to chronic obstructive pulmonary disease attributable to each risk factor, by age, in 2019. DALY=disability adjusted life years (Generated from data available from <http://ghdx.healthdata.org/gbd-results-tool>).

Figure S14: Percentage of DALYs due to chronic obstructive pulmonary disease attributable to each risk factor among males, by age, in 2019. DALY=disability adjusted life years (Generated from data available from <http://ghdx.healthdata.org/gbd-results-tool>).

Figure S15: Percentage of DALYs due to chronic obstructive pulmonary disease attributable to each risk factor among females, by age, in 2019. DALY=disability adjusted life years (Generated from data available from <http://ghdx.healthdata.org/gbd-results-tool>).

Table S1: Search terms used for the systematic review of the literature on COPD in the Global Burden of Disease 2019 Study

(chronic obstructive pulmonary disease[Title/Abstract] AND (prevalence[Title/Abstract] or incidence [Title/Abstract] or mortality [Title/Abstract] or death [Title/Abstract]) AND "Cross-Sectional Studies"[MeSH Terms]) Filters: Publication date from 04/01/2015 to 11/01/2016; Humans

Table S2: Selected covariates for the CODEm models in the chronic obstructive pulmonary disease estimation process		
Level	Covariate	Direction
1	Log-transformed SEV scalar: COPD	+
	Cumulative cigarettes (10 years)	+
	Cumulative cigarettes (5 years)	+
	Cumulative cigarettes (20 years)	+
	Elevation over 1,500m (proportion)	+
	Outdoor air pollution (PM _{2.5})	+
2	Smoking prevalence	+
	Indoor air pollution (all cooking fuels)	+
	Healthcare Access and Quality Index	-
3	Socio-demographic Index	-
	Lagged 10 year income per capita (I\$ per capita)	-
	Education (years per capita)	-

Table S3: Health states for chronic obstructive pulmonary disease and the associated disability weights from the Global Burden of Disease 2019 Study

Health state	Lay description	Disability weight (95% CI)
Mild COPD	This person has a cough and shortness of breath after heavy physical activity, but is able to walk long distances and climb stairs.	0.019 (0.011–0.033)
Moderate COPD	This person has a cough, wheezing, and shortness of breath, even after light physical activity. The person feels tired and can walk only short distances or climb only a few stairs.	0.225 (0.153–0.31)
Severe COPD	This person has a cough, wheezing, and shortness of breath all the time. The person has great difficulty walking even short distances or climbing any stairs, feels tired when at rest, and is anxious.	0.408 (0.273–0.556)

Table S4: Prevalent cases of chronic obstructive pulmonary disease in 1990 and 2019 and the percentage change in the age-standardised rates (ASRs) per 100,000, by location (Generated from data available from http://ghdx.healthdata.org/gbd-results-tool)					
	1990		2019		Percentage change in the ASRs per 100,000
	No (95% UI)	ASRs per 100,000 (95% UI)	No (95% UI)	ASRs per 100,000 (95% UI)	
Global	114923955 (109391037, 120683217)	2890.9 (2743.2, 3038.1)	212335951 (200422146, 225097834)	2638.2 (2492.2, 2796.1)	-8.7 (-10.2, -7.3)
High-income North America	12245378 (11349362, 12977981)	3521 (3283.3, 3725.2)	21968671 (20985083, 22806701)	3558.4 (3412.9, 3694.4)	1.1 (-1.9, 4.9)
Canada	833885 (793343, 875356)	2582 (2456.9, 2710.6)	1818278 (1721234, 1934105)	2646.5 (2494.6, 2810.7)	2.5 (-1.9, 7.1)
Greenland	1143 (1087, 1195)	3505.4 (3384.4, 3625.9)	2126 (2041, 2215)	3304.6 (3167.6, 3442.7)	-5.7 (-8.5, -3)
United States of America	11410071 (10538686, 12133375)	3622.1 (3363.7, 3846.2)	20147917 (19242749, 20933265)	3668.5 (3514.6, 3805.4)	1.3 (-2, 5.4)
Australasia	818140 (783973, 850593)	3552.1 (3403.4, 3696.8)	1540426 (1462887, 1624938)	3192.8 (3027.7, 3372.1)	-10.1 (-13.2, -6.6)
Australia	676694 (651315, 703043)	3527.1 (3387.4, 3667.6)	1284616 (1218823, 1357765)	3157.3 (2989.9, 3336.5)	-10.5 (-14, -6.6)
New Zealand	141447 (129989, 151923)	3672.8 (3382.9, 3945.2)	255810 (234240, 278107)	3384.3 (3116.8, 3667.2)	-7.9 (-11.8, -3.2)
High-income Asia Pacific	3599283 (3292235, 3929485)	1887.8 (1734.4, 2059.4)	6581036 (6084156, 7107505)	1500.7 (1384.2, 1621.3)	-20.5 (-23, -17.5)
Brunei Darussalam	3531 (3295, 3750)	3467.8 (3286.4, 3644)	8122 (7549, 8690)	2937.8 (2771, 3106.4)	-15.3 (-18.4, -11.8)
Japan	2996186 (2715338, 3305788)	1877 (1709.5, 2062.5)	4789562 (4350538, 5272870)	1354.2 (1226.5, 1487.2)	-27.9 (-30.5, -24.4)
Singapore	61138 (58372, 64211)	2845 (2748.1, 2948.6)	113408 (106305, 121242)	1499.9 (1407.5, 1598.6)	-47.3 (-49.8, -44.7)
Republic of Korea	538428 (498278, 577133)	1828.4 (1720.9, 1946)	1669944 (1582268, 1761412)	2027.3 (1921.5, 2140.8)	10.9 (6.3, 15.4)
Western Europe	16577913 (15847798, 17358907)	3002.7 (2872.9, 3137.4)	26320873 (25114808, 27583392)	3017.5 (2874.7, 3165.8)	0.5 (-0.7, 1.7)
Andorra	1632 (1525, 1738)	3043.1 (2856.7, 3225.5)	4441 (4180, 4721)	3217 (3020.7, 3423.5)	5.7 (1.7, 9.6)
Austria	308266 (294613, 323825)	2773.3 (2656.5, 2901.4)	524635 (499937, 553157)	3116.4 (2966.1, 3288.3)	12.4 (8.7, 16.3)
Belgium	493983 (478812, 509352)	3373.8 (3263.9, 3480.3)	853012 (826328, 879944)	3927.7 (3803.7, 4052.9)	16.4 (13, 20.1)

Cyprus	21106 (19734 , 22560)	2759.5 (2596.5 , 2928.7)	51510 (48462 , 54815)	2798.8 (2637.8 , 2970.2)	1.4 (-2 , 4.9)
Denmark	305492 (296696 , 313693)	3936 (3823.9 , 4033)	475839 (464045 , 486314)	4299.5 (4174.3 , 4411.8)	9.2 (6.3 , 12)
Finland	149351 (142437 , 156800)	2220.7 (2115.3 , 2337.7)	243426 (229106 , 257920)	2199.6 (2060.4 , 2341.8)	-1 (-5.2 , 3.2)
France	1932582 (1844226 , 2034665)	2406.7 (2297.1 , 2531.7)	2543487 (2406078 , 2699316)	1966.7 (1850.7 , 2089.3)	-18.3 (-21.7 , -15)
Germany	3596678 (3446048 , 3758539)	2990 (2857.3 , 3120.4)	6130746 (5844770 , 6420710)	3433.4 (3263.7 , 3592.1)	14.8 (10.7 , 18.8)
Greece	353147 (334886 , 373895)	2490.3 (2362.6 , 2631.7)	657517 (626678 , 693971)	2824.2 (2694.8 , 2976.4)	13.4 (9.4 , 17.7)
Iceland	8611 (8164 , 9066)	3040.6 (2878.2 , 3200.5)	16033 (15245 , 16915)	2938.2 (2786.1 , 3103.2)	-3.4 (-6.6 , 0.2)
Ireland	166701 (161683 , 171505)	4169 (4040.6 , 4293.9)	267359 (254770 , 280102)	3656.1 (3483.6 , 3827)	-12.3 (-15.9 , -8.7)
Israel	114299 (108540 , 121163)	2460.3 (2342.8 , 2604.5)	253531 (240808 , 267767)	2256.1 (2138.4 , 2389.6)	-8.3 (-11.3 , -5)
Italy	2266653 (2084678 , 2452655)	2684.6 (2474.2 , 2898.8)	3253110 (2970227 , 3542194)	2287.1 (2094.5 , 2491.2)	-14.8 (-18.1 , -11.6)
Luxembourg	17174 (16525 , 17875)	3283.3 (3156.1 , 3415.5)	33204 (31539 , 35080)	3362 (3190.1 , 3558.4)	2.4 (-1.3 , 5.9)
Malta	10624 (10071 , 11231)	2583 (2449.3 , 2728)	20055 (18967 , 21195)	2329.1 (2193.3 , 2460)	-9.8 (-13.3 , -6.3)
Monaco	2089 (1888 , 2201)	3171.4 (2941 , 3338.3)	2785 (2627 , 2928)	3094.6 (2928 , 3256.1)	-2.4 (-6.4 , 7.4)
Netherlands	678338 (653219 , 703348)	3505.6 (3364.8 , 3638.5)	1271027 (1220730 , 1321914)	3863.8 (3695.2 , 4023.1)	10.2 (6.3 , 14.6)
Norway	191196 (174596 , 208571)	2961.5 (2728.1 , 3219.3)	346210 (320635 , 371915)	3705.2 (3434.5 , 3982.7)	25.1 (21 , 29.4)
Portugal	387425 (372544 , 403279)	2994.6 (2885.3 , 3109.9)	630134 (601544 , 663586)	2693 (2558.5 , 2839.4)	-10.1 (-13.6 , -6.3)
San Marino	1021 (961 , 1066)	3226.4 (3053.4 , 3367.9)	1954 (1854 , 2036)	3132.8 (2979.2 , 3275)	-2.9 (-7.3 , 3.6)
Spain	1656213 (1603124 , 1705537)	3191 (3088.2 , 3282.3)	2905818 (2788360 , 3034266)	3081.8 (2935.3 , 3235.7)	-3.4 (-6.9 , -0.1)
Sweden	409237 (371381 , 450841)	2916.1 (2663.8 , 3175.3)	657306 (598730 , 721926)	3216.7 (2956.6 , 3508.4)	10.3 (5.6 , 15.3)
Switzerland	286322 (272611 , 300657)	2872.8 (2727.8 , 3017.4)	427179 (405500 , 450249)	2553.1 (2424 , 2699.1)	-11.1 (-14.6 , -7.8)

United Kingdom	3206010 (2992311 , 3407355)	3701.6 (3477 , 3923.3)	4727607 (4443749 , 5006429)	3902.1 (3678.5 , 4125.7)	5.4 (3.4 , 7.2)
Southern Latin America	1047057 (1005814 , 1090801)	2288.8 (2199.4 , 2384.5)	2234237 (2134786 , 2344295)	2741.7 (2619.3 , 2875)	19.8 (16.6 , 22.9)
Argentina	760655 (729290 , 792614)	2400.5 (2301.2 , 2498)	1569490 (1498398 , 1649152)	2973.1 (2836.9 , 3123.5)	23.9 (20 , 27.8)
Chile	195431 (183368 , 207594)	1902.4 (1801.7 , 2008.8)	502110 (472286 , 532266)	2162.6 (2033.8 , 2291.4)	13.7 (8.9 , 18.4)
Uruguay	90928 (87468 , 94303)	2462 (2369.3 , 2550.1)	162524 (156155 , 168419)	3173.3 (3057.3 , 3286.7)	28.9 (25.2 , 33.1)
Eastern Europe	6832230 (6412131 , 7283476)	2585.2 (2432.2 , 2750.3)	5716966 (5330259 , 6145576)	1821.5 (1705.9 , 1949.5)	-29.5 (-31.5 , -27.5)
Belarus	367983 (355902 , 380083)	2963.7 (2871.2 , 3058.1)	255515 (241451 , 269505)	1765.2 (1660.6 , 1865.8)	-40.4 (-43.3 , -37.8)
Estonia	27092 (25675 , 28728)	1417.8 (1343.1 , 1504.9)	31791 (30055 , 33696)	1380.8 (1291.2 , 1472.9)	-2.6 (-6.9 , 1.5)
Latvia	52673 (49903 , 55610)	1589.7 (1509.3 , 1672.8)	43304 (40889 , 45941)	1293.3 (1210.2 , 1380.3)	-18.6 (-22.6 , -14.8)
Lithuania	109415 (105712 , 113475)	2505.8 (2418.8 , 2595.7)	76722 (72967 , 80785)	1544.9 (1463.6 , 1634.5)	-38.3 (-41.3 , -35.1)
Republic of Moldova	129046 (124839 , 133416)	2986.7 (2889.3 , 3093.3)	103794 (98916 , 109202)	1930.9 (1836.5 , 2028.2)	-35.4 (-38 , -32.7)
Russian Federation	3819371 (3549316 , 4102811)	2229 (2074 , 2393.2)	3921088 (3641585 , 4227149)	1823.8 (1699.8 , 1960.3)	-18.2 (-19.6 , -16.7)
Ukraine	2326649 (2161765 , 2500178)	3451.3 (3219.3 , 3691.4)	1284752 (1180459 , 1402555)	1878.7 (1736.3 , 2032.2)	-45.6 (-48.8 , -42.2)
Central Europe	3429031 (3277526 , 3587713)	2436.3 (2332.7 , 2548.1)	4764340 (4537311 , 5018946)	2427.4 (2316.9 , 2552.3)	-0.4 (-2.2 , 1.4)
Albania	37993 (35414 , 40630)	1749.2 (1647.1 , 1855.5)	62519 (58363 , 67006)	1597 (1487.9 , 1713.7)	-8.7 (-12.3 , -5.1)
Bosnia and Herzegovina	94640 (89340 , 100335)	2333.6 (2208.1 , 2478.4)	122239 (115433 , 130034)	2257.9 (2134.1 , 2390.5)	-3.2 (-6.9 , 0.4)
Bulgaria	280060 (269169 , 290775)	2477.9 (2392.2 , 2568.8)	335055 (317939 , 353729)	2624.6 (2495.6 , 2751.2)	5.9 (2.1 , 9.9)
Croatia	137325 (130203 , 144385)	2266.1 (2154.8 , 2377.5)	219344 (210000 , 230241)	2655.7 (2534 , 2789.5)	17.2 (13.2 , 21.7)
Czechia	269761 (258686 , 281758)	2107.9 (2023.5 , 2201.2)	489950 (466462 , 514836)	2569.9 (2446.7 , 2693.9)	21.9 (17.6 , 26.3)

Hungary	400635 (385737, 418595)	2931.8 (2835.3, 3047.3)	612233 (592009, 634589)	3465.6 (3369.1, 3568.7)	18.2 (13.8, 22)
Montenegro	7327 (6783, 7959)	1200 (1112.5, 1296.5)	10750 (9940, 11582)	1245.2 (1149.2, 1344.8)	3.8 (0.1, 7.3)
North Macedonia	36119 (34120, 38221)	1965 (1859.7, 2073)	57366 (53942, 61033)	1966.8 (1857, 2083.6)	0.1 (-3.3, 3.7)
Poland	1018655 (939695, 1104555)	2402.8 (2220.7, 2601)	1430280 (1307014, 1572224)	2210.3 (2026.4, 2415)	-8 (-11.6, -4.3)
Romania	748063 (720936, 776844)	2879.8 (2775.9, 2985.8)	772272 (740259, 807347)	2329.3 (2237.3, 2430)	-19.1 (-22, -16.1)
Serbia	251479 (238446, 265655)	2294.9 (2176.1, 2418.8)	417284 (394857, 440846)	2899.8 (2758.8, 3055)	26.4 (22.1, 31.3)
Slovakia	90286 (85060, 95903)	1581.4 (1491.5, 1679.5)	156589 (147908, 166436)	1870 (1764.3, 1983.1)	18.3 (14.3, 22.5)
Slovenia	56688 (53864, 59428)	2405.2 (2286.7, 2521.9)	78459 (74282, 82875)	1897 (1784.2, 2019.7)	-21.1 (-24.4, -17.8)
Central Asia	1275115 (1240112, 1313192)	2579.6 (2503.8, 2661.4)	1677622 (1613858, 1745238)	2257.2 (2169.4, 2349.1)	-12.5 (-14.2, -10.9)
Armenia	74339 (71481, 77080)	2753.8 (2642.4, 2865.3)	93518 (89021, 98603)	2388 (2273.7, 2515.4)	-13.3 (-16.5, -9.9)
Azerbaijan	134730 (129181, 139871)	2477.8 (2367.1, 2579.9)	216758 (203899, 230539)	2357.9 (2224, 2504.5)	-4.8 (-8.5, -1.1)
Georgia	90103 (85628, 94865)	1531.7 (1459, 1608.2)	132801 (126067, 140137)	2373.1 (2260.9, 2495.2)	54.9 (49.4, 61)
Kazakhstan	397675 (387352, 409104)	3057.1 (2968.1, 3154.1)	524697 (508006, 542490)	3052.6 (2948.6, 3158.8)	-0.1 (-3.1, 2.8)
Kyrgyzstan	115349 (112489, 118304)	3725.9 (3620, 3833)	138722 (133002, 144148)	2955.6 (2821.8, 3080.1)	-20.7 (-23.7, -17.8)
Mongolia	20577 (19548, 21624)	1641.3 (1549.7, 1737.3)	33038 (30410, 35625)	1266.2 (1179.5, 1354.7)	-22.9 (-26.6, -18.6)
Tajikistan	73630 (70600, 76891)	2294.5 (2183, 2411.5)	113590 (108025, 118875)	1778 (1683.2, 1874.9)	-22.5 (-25, -19.9)
Turkmenistan	54792 (52799, 56772)	2548.3 (2440.3, 2649)	56871 (53880, 60045)	1326.9 (1260.8, 1398.2)	-47.9 (-50.5, -45.5)
Uzbekistan	313920 (300988, 326459)	2471.8 (2360.2, 2581.4)	367628 (344409, 389220)	1562.6 (1480.9, 1643.8)	-36.8 (-39.6, -33.9)
Central Latin America	1857119 (1739756, 1969452)	1983.2 (1863.9, 2118.5)	5157823 (4847688, 5502692)	2186.5 (2052.6, 2332.4)	10.3 (8.3, 12.3)
Colombia	436335 (415771, 458922)	2227 (2128.7, 2343.2)	1319481 (1252085, 1391749)	2467.5 (2338.5, 2605.1)	10.8 (6.6, 15.6)

Costa Rica	37975 (35402, 40545)	2017.2 (1902.4, 2139.2)	106907 (101248, 113958)	2092.9 (1981.3, 2230.5)	3.8 (0.3, 7.5)
El Salvador	41545 (38497, 44518)	1192.2 (1113.1, 1270.8)	101516 (95246, 108231)	1630.9 (1529, 1741.2)	36.8 (32.4, 41.8)
Guatemala	50218 (47224, 52993)	1071.1 (1014.2, 1127.4)	154061 (143133, 165670)	1215.2 (1139.8, 1296.4)	13.5 (8.9, 18)
Honduras	45454 (43362, 47707)	1807.5 (1713.1, 1914.2)	147922 (139987, 157212)	2254.9 (2123.1, 2410.3)	24.8 (20.7, 28.6)
Mexico	1024529 (940755, 1109586)	2181.4 (1995.8, 2384.7)	2600960 (2385776, 2844272)	2247.2 (2053.2, 2463)	3 (0.5, 5.7)
Nicaragua	23369 (21263, 25417)	1170.1 (1089.7, 1250.3)	81712 (76164, 87520)	1773.4 (1668.1, 1888.4)	51.6 (46.1, 57.7)
Panama	24821 (23169, 26629)	1503.8 (1413.6, 1598.1)	66877 (62966, 71327)	1584 (1490.8, 1690.8)	5.3 (1.4, 9.1)
Venezuela (Bolivarian Republic of)	172873 (160288, 184266)	1488.2 (1407.9, 1575.9)	578386 (546082, 614104)	2003 (1890, 2126.7)	34.6 (29.7, 39.5)
Andean Latin America	300258 (283720, 314305)	1174.2 (1113.9, 1232.7)	801856 (750171, 851835)	1382.6 (1297.9, 1464.5)	17.8 (14.2, 21.3)
Bolivia (Plurinational State of)	64445 (61397, 67352)	1714.9 (1624.9, 1810.1)	167240 (157051, 178097)	1864.8 (1753.7, 1985.7)	8.7 (4.2, 13.4)
Ecuador	81756 (77261, 85742)	1260.5 (1197.5, 1316.7)	217229 (202962, 232141)	1445.1 (1358, 1540.9)	14.6 (9.5, 19.6)
Peru	154056 (143144, 163783)	1003.5 (939.1, 1063.7)	417387 (388012, 446187)	1250.7 (1164.1, 1336.2)	24.6 (19.4, 29.5)
Caribbean	437591 (415043, 459808)	1582.5 (1508.2, 1660.9)	1050382 (999066, 1099680)	2044.2 (1944.5, 2141)	29.2 (26.5, 32)
Antigua and Barbuda	466 (424, 507)	841.2 (769.6, 912.4)	1052 (965, 1146)	1057.2 (970, 1148.1)	25.7 (20.5, 31.2)
Barbados	2394 (2205, 2594)	863.9 (793.8, 938.3)	4459 (4129, 4810)	1039.6 (957.4, 1124.9)	20.3 (15.5, 25.2)
Belize	1606 (1500, 1699)	1440.6 (1354.7, 1520.9)	5738 (5463, 6028)	1821.7 (1729.7, 1917.6)	26.5 (21.7, 31.1)
Bermuda	752 (695, 813)	1194.8 (1110.3, 1285.1)	1499 (1401, 1603)	1324 (1224.5, 1423.8)	10.8 (6.4, 15.3)
Bahamas	2031 (1846, 2210)	1076.1 (996.7, 1155.7)	4772 (4432, 5132)	1194.7 (1113.2, 1281.7)	11 (7, 14.9)

Cuba	189823 (180545 , 200065)	1825.2 (1740 , 1924.3)	475795 (453102 , 499433)	2641.2 (2507.4 , 2766.9)	44.7 (39.2 , 50.7)
Dominica	721 (668 , 775)	1044 (968.1 , 1127.4)	1163 (1095 , 1239)	1371.2 (1287 , 1461.3)	31.3 (26.1 , 36.8)
Dominican Republic	45803 (41800 , 49395)	945.2 (877.6 , 1010.6)	129279 (120868 , 137518)	1316.3 (1235.1 , 1396.8)	39.3 (34 , 44.6)
Grenada	935 (878 , 991)	1292.4 (1213 , 1369.8)	1673 (1570 , 1778)	1506.3 (1412.5 , 1596.7)	16.6 (12.6 , 20.5)
Guyana	5026 (4572 , 5507)	1009.6 (938.6 , 1083.9)	8896 (8278 , 9525)	1302.9 (1219.9 , 1389.5)	29.1 (23.2 , 34.8)
Haiti	55627 (51579 , 59542)	1439.9 (1342.4 , 1543.2)	145127 (134824 , 154924)	1810.2 (1689.9 , 1935.8)	25.7 (21.2 , 30.4)
Jamaica	29519 (27777 , 31240)	1595.5 (1503.1 , 1690.8)	55521 (52686 , 58296)	1833.3 (1738.8 , 1927.2)	14.9 (10.6 , 19.3)
Puerto Rico	69216 (65785 , 72895)	1944.2 (1849.7 , 2045.3)	141664 (134603 , 149233)	2170.6 (2061.2 , 2291)	11.6 (7.6 , 15.9)
Saint Kitts and Nevis	517 (489 , 549)	1449.9 (1378.3 , 1531.9)	1228 (1157 , 1299)	1854.2 (1753.9 , 1956.1)	27.9 (23 , 33.2)
Saint Lucia	1515 (1430 , 1598)	1594.9 (1513.1 , 1682.9)	4124 (3914 , 4335)	1950.3 (1855.4 , 2049.5)	22.3 (18.4 , 26.8)
Saint Vincent and the Grenadines	703 (637 , 770)	871.8 (800.3 , 947.5)	1483 (1386 , 1589)	1144.8 (1067.8 , 1225.6)	31.3 (25.6 , 37.3)
Suriname	3807 (3564 , 4051)	1298.5 (1221.9 , 1374.4)	8972 (8466 , 9493)	1492.7 (1413.6 , 1574.9)	15 (11.4 , 19.1)
Trinidad and Tobago	11601 (10918 , 12263)	1231.1 (1161.1 , 1297.1)	20158 (18971 , 21443)	1166.9 (1096.3 , 1240.3)	-5.2 (-8.7 , -1.7)
United States Virgin Islands	950 (866 , 1037)	1051.9 (969.1 , 1137.4)	2196 (2046 , 2362)	1376.1 (1279.6 , 1484.1)	30.8 (25.6 , 36.4)
Tropical Latin America	2969035 (2774856 , 3168873)	3116 (2895.1 , 3344.7)	6330068 (5844669 , 6860751)	2634.5 (2436.3 , 2860.8)	-15.5 (-18.8 , -12.5)
Brazil	2929615 (2737000 , 3127815)	3158.5 (2931.7 , 3392.1)	6228274 (5745150 , 6755662)	2655.5 (2453.7 , 2885.8)	-15.9 (-19.3 , -12.9)
Paraguay	39420 (37322 , 41409)	1540.5 (1463.8 , 1619.7)	101794 (95740 , 107746)	1741.9 (1641.5 , 1846.3)	13.1 (8.9 , 17.1)
East Asia	28661117 (27060997 , 30313430)	3288.8 (3098.9 , 3477.4)	46713574 (42642934 , 51188724)	2396.1 (2191.3 , 2620.1)	-27.1 (-31 , -22.8)
China	27750213 (26163289 , 29381254)	3300.9 (3104.8 , 3496.1)	45164960 (41126104 , 49616063)	2404.4 (2195.9 , 2636.3)	-27.2 (-31.2 , -22.6)

Democratic People's Republic of Korea	625083 (616513, 632480)	4075 (4021.5, 4123.6)	1161210 (1120025, 1196715)	3718.5 (3588.4, 3834.5)	-8.7 (-11.6, -6.1)
Taiwan (Province of China)	285820 (267523, 305150)	1833.8 (1728, 1936.2)	387404 (364073, 413465)	1058.6 (987.7, 1135.6)	-42.3 (-45.1, -39.5)
Southeast Asia	6597328 (6264624, 6996183)	2387.2 (2243.1, 2552.1)	14999748 (14232397, 15835709)	2480.1 (2353, 2624.5)	3.9 (2.5, 5.4)
Cambodia	94154 (88429, 100341)	1764.6 (1647.1, 1886.5)	271619 (254784, 288883)	2214.6 (2082.7, 2347.7)	25.5 (20.1, 30.4)
Indonesia	2524627 (2342195, 2716669)	2373.1 (2180.5, 2582.4)	5147353 (4754573, 5557902)	2359.2 (2179.2, 2567.1)	-0.6 (-2.7, 1.6)
Lao People's Democratic Republic	53007 (49361, 56745)	2310 (2143.6, 2485.3)	130239 (122407, 137856)	2741.8 (2568.3, 2911.2)	18.7 (14.7, 22.9)
Malaysia	207562 (194105, 221837)	2171 (2054.7, 2305.5)	548253 (515596, 585959)	2057.2 (1944.5, 2190.4)	-5.2 (-9, -1.4)
Maldives	3371 (3270, 3465)	3539.7 (3422, 3661.6)	10414 (9859, 10943)	3199.9 (3030.8, 3371.7)	-9.6 (-13, -6.3)
Mauritius	17701 (16878, 18543)	2258.9 (2155.7, 2372.4)	32393 (30706, 34221)	1984.6 (1882.5, 2086)	-12.1 (-15.2, -9.1)
Myanmar	827852 (787278, 867068)	3526.3 (3334.5, 3718.4)	1791217 (1732159, 1848603)	3963.7 (3825.4, 4096.7)	12.4 (8.9, 16.2)
Philippines	703251 (657004, 751419)	2050.2 (1892.7, 2215.1)	1929067 (1804907, 2063892)	2369.2 (2198.6, 2555)	15.6 (11.9, 19)
Sri Lanka	231017 (216827, 245539)	1916.2 (1797.1, 2040.6)	561222 (526822, 596238)	2330.5 (2193.4, 2463.7)	21.6 (16.7, 26.3)
Seychelles	1106 (1047, 1165)	1873.6 (1771.5, 1976.5)	2377 (2249, 2512)	2171.5 (2056.6, 2290.8)	15.9 (11.9, 20.1)
Thailand	1033078 (991954, 1075733)	2687.3 (2566.2, 2820.7)	1906660 (1799459, 2015166)	1968.6 (1860.2, 2079.1)	-26.7 (-29.8, -23.8)
Timor-Leste	7099 (6706, 7509)	1900.8 (1771.3, 2036.6)	20767 (19536, 22102)	2492.4 (2344.8, 2649.6)	31.1 (26.1, 36.5)
Viet Nam	884734 (831478, 940456)	2048.1 (1928.1, 2182)	2628515 (2501573, 2756167)	2880.7 (2743.6, 3024.6)	40.7 (35.2, 46.2)
Oceania	80256 (78523, 81849)	2528.7 (2463.6, 2589.3)	188439 (183116, 192867)	2514.7 (2435.2, 2581.7)	-0.6 (-2.5, 1.1)
American Samoa	414 (392, 435)	1667.2 (1581.2, 1770)	617 (583, 651)	1374.2 (1299.7, 1454.4)	-17.6 (-20.2, -14.8)
Cook Islands	438 (420, 456)	3415.5 (3251.9, 3574.3)	791 (750, 830)	3349 (3188, 3501.3)	-1.9 (-5.2, 1.3)

Micronesia (Federated States of)	979 (930 , 1035)	1887.9 (1776.3 , 2023.5)	1092 (1030 , 1156)	1575.6 (1485.8 , 1669.6)	-16.5 (-20.3 , -13.2)
Fiji	3840 (3548 , 4123)	933.9 (870.3 , 1001.6)	4710 (4355 , 5056)	668.5 (622.1 , 713.7)	-28.4 (-31.3 , -25.1)
Guam	985 (920 , 1049)	1311.4 (1234.9 , 1389.4)	1828 (1724 , 1945)	1010 (951 , 1074)	-23 (-25.6 , -20)
Kiribati	463 (437 , 488)	1021.7 (963.6 , 1078.8)	796 (750 , 843)	1019.4 (959.2 , 1084.8)	-0.2 (-3.2 , 2.9)
Marshall Islands	391 (373 , 408)	1951.2 (1837.5 , 2070)	591 (562 , 619)	1581.6 (1494.2 , 1673.7)	-18.9 (-21.5 , -16.4)
Nauru	134 (130 , 139)	3206.2 (3054.9 , 3357.1)	142 (136 , 148)	3076.7 (2925 , 3238)	-4 (-7.6 , -0.9)
Niue	70 (66 , 74)	3161 (3001.3 , 3330.6)	67 (63 , 70)	3191.1 (3032.2 , 3371.9)	1 (-2.5 , 4.3)
Northern Mariana Islands	333 (309 , 358)	1608.8 (1514.8 , 1709.4)	470 (440 , 501)	1167.6 (1096.8 , 1238.3)	-27.4 (-30.1 , -24.7)
Palau	336 (321 , 349)	3339 (3172.5 , 3489.5)	632 (601 , 664)	3186.1 (3040.7 , 3344)	-4.6 (-8.2 , -1.3)
Papua New Guinea	60711 (59419 , 61815)	3120 (3045.5 , 3191.2)	156629 (152109 , 160383)	3110.8 (3012.9 , 3197.4)	-0.3 (-2.6 , 1.6)
Samoa	1638 (1558 , 1719)	1734.9 (1636.6 , 1842.9)	1894 (1774 , 2013)	1287.6 (1203.2 , 1375.8)	-25.8 (-28.9 , -22.7)
Solomon Islands	2541 (2391 , 2690)	1649.8 (1547 , 1757.1)	4941 (4617 , 5265)	1478.5 (1386.4 , 1575.5)	-10.4 (-13.7 , -6.9)
Tokelau	42 (40 , 44)	3162.2 (3013.2 , 3304.8)	42 (39 , 44)	3210.1 (3052.1 , 3364.8)	1.5 (-1.8 , 5.1)
Tonga	817 (766 , 866)	1482.9 (1394.2 , 1575.7)	978 (918 , 1034)	1200.7 (1126.4 , 1273.4)	-19 (-21.8 , -16.1)
Tuvalu	203 (192 , 213)	3025.2 (2862.8 , 3187.1)	289 (274 , 306)	2891.4 (2732.1 , 3064.5)	-4.4 (-7.8 , -0.7)
Vanuatu	1478 (1400 , 1560)	1980.4 (1858 , 2121)	3031 (2844 , 3231)	1627.4 (1520.1 , 1741.7)	-17.8 (-21.2 , -14.8)
North Africa and Middle East	3584089 (3404769 , 3768097)	1787.6 (1690.9 , 1887.5)	10720230 (10262918 , 11204177)	2333.9 (2230.1 , 2443.6)	30.6 (28.2 , 33)
Afghanistan	134721 (124810 , 145783)	1764 (1635.3 , 1913.3)	371175 (349917 , 393665)	2141.4 (1998 , 2291.4)	21.4 (16.8 , 25.9)
Algeria	210235 (196977 , 222964)	1442.2 (1355.9 , 1534.2)	628753 (590277 , 667208)	1787.8 (1682 , 1899.8)	24 (19.8 , 28.1)

Bahrain	5335 (4908 , 5750)	2584.5 (2430.2 , 2743.5)	20177 (18350 , 22134)	2013.4 (1880.4 , 2151.1)	-22.1 (-25.2 , -18.8)
Egypt	588953 (556275 , 622076)	1685.4 (1581.6 , 1790.5)	1881259 (1787452 , 1965262)	2731 (2588.1 , 2872)	62 (55.6 , 68.9)
Iran (Islamic Republic of)	509008 (465525 , 555495)	1640 (1508.2 , 1794.9)	1562415 (1446402 , 1688536)	2055.5 (1891.4 , 2232.6)	25.3 (20.9 , 29.8)
Iraq	144140 (135387 , 152870)	1481.2 (1390.1 , 1578)	308960 (281559 , 338889)	1053.5 (976.7 , 1139.4)	-28.9 (-32.7 , -24.4)
Jordan	31615 (29675 , 33533)	1744.3 (1641.6 , 1850.1)	119919 (110359 , 129523)	1602.3 (1504.3 , 1706.6)	-8.1 (-12.3 , -3.6)
Kuwait	11102 (9849 , 12363)	995 (920.7 , 1075.8)	39087 (34844 , 43652)	1023.1 (939.3 , 1115.6)	2.8 (-1.4 , 6.9)
Lebanon	45238 (42396 , 48187)	1904.5 (1788.1 , 2030.3)	141237 (131990 , 150458)	2723.1 (2548.3 , 2901.7)	43 (38.1 , 47.8)
Libya	39402 (37040 , 41923)	1714.1 (1606.3 , 1832.5)	139857 (131289 , 147932)	2461 (2306.8 , 2612.1)	43.6 (38.1 , 49.8)
Morocco	223596 (208137 , 238935)	1365.6 (1274.9 , 1460.4)	611177 (573610 , 650326)	1896.7 (1782.4 , 2018.8)	38.9 (33.4 , 44.9)
Palestine	17881 (16699 , 18965)	1707.3 (1607.6 , 1810.6)	44568 (40888 , 48163)	1552.7 (1454.1 , 1659.8)	-9.1 (-12.9 , -5.2)
Oman	8852 (7578 , 10134)	876.5 (784.4 , 968.7)	33346 (28850 , 38642)	1281.2 (1172.5 , 1395.8)	46.2 (39.6 , 53.6)
Qatar	4075 (3757 , 4378)	1981.8 (1865.8 , 2101)	26415 (23313 , 29791)	1754.9 (1633.4 , 1886.3)	-11.4 (-15.2 , -7.7)
Saudi Arabia	101104 (91334 , 111224)	1381.3 (1285.4 , 1485)	434561 (396012 , 473597)	2053 (1918.1 , 2194.3)	48.6 (42.5 , 54.8)
Sudan	177280 (165885 , 189352)	1574 (1462.6 , 1697)	428128 (401529 , 455381)	1862.6 (1748 , 1989.1)	18.3 (14.1 , 23.6)
Syrian Arab Republic	108889 (102798 , 114953)	1651.1 (1557.4 , 1748.5)	249284 (233862 , 265450)	2017.3 (1903 , 2137.8)	22.2 (18.3 , 26.1)
Tunisia	82010 (75916 , 87875)	1543.5 (1445.8 , 1643.8)	249513 (233445 , 266354)	2048.5 (1916.8 , 2186.2)	32.7 (27.7 , 38.2)
Turkey	1007579 (965697 , 1047402)	2552.7 (2439.7 , 2668)	2885498 (2798099 , 2967100)	3287.1 (3187.4 , 3380.3)	28.8 (24.4 , 33.2)
United Arab Emirates	20338 (19552 , 21023)	2253 (2126 , 2379.7)	191068 (187010 , 194836)	2926.9 (2811.1 , 3046.4)	29.9 (24.4 , 36.4)
Yemen	110325 (103679 , 117954)	1732.8 (1612.1 , 1879.3)	342941 (323483 , 363074)	2065 (1932.8 , 2207)	19.2 (13.9 , 24)

South Asia	20038950 (19121289 , 20871763)	3472.3 (3298.7 , 3631.4)	45677426 (43105372 , 48374684)	3298.8 (3104.7 , 3490.8)	-5 (-6.9 , -3.2)
Bangladesh	1598536 (1527672 , 1665861)	3065.4 (2906.6 , 3217.2)	3924777 (3722100 , 4140221)	2975.4 (2820.2 , 3138.6)	-2.9 (-6.6 , 0.9)
Bhutan	8940 (8526 , 9358)	3357.4 (3170.8 , 3546.3)	18347 (17318 , 19442)	3222.6 (3030.2 , 3418.9)	-4 (-7.4 , -0.2)
India	16493706 (15757382 , 17147028)	3680.6 (3500.4 , 3835.4)	37874659 (35668470 , 40143766)	3395.1 (3193 , 3594.5)	-7.8 (-10 , -5.5)
Nepal	334833 (319053 , 350059)	3439.4 (3250.4 , 3622.3)	803246 (764028 , 839952)	3651 (3476.4 , 3824.2)	6.2 (2.9 , 9.3)
Pakistan	1602936 (1485122 , 1734122)	2639.1 (2428.5 , 2879.3)	3056397 (2839592 , 3292395)	2598.6 (2378.5 , 2831)	-1.5 (-4 , 1)
Southern Sub-Saharan Africa	758790 (713993 , 806720)	2483.9 (2321.1 , 2658.3)	1337479 (1250978 , 1433369)	2243.9 (2090 , 2411.7)	-9.7 (-12.2 , -7.1)
Botswana	14865 (13972 , 15774)	2266.1 (2136.3 , 2406.4)	33850 (31750 , 36001)	2265.9 (2126.7 , 2409.3)	0 (-3.6 , 4)
Lesotho	27307 (25940 , 28622)	2532.4 (2397.9 , 2664.9)	38827 (37057 , 40680)	2815.3 (2670.7 , 2960.6)	11.2 (7.8 , 14.7)
Namibia	18823 (17786 , 19847)	2369.1 (2241.4 , 2510)	33664 (31536 , 35779)	2191.5 (2063.4 , 2329.5)	-7.5 (-10.9 , -4.1)
South Africa	591669 (553135 , 632435)	2583.2 (2398 , 2785.9)	1046594 (970945 , 1127782)	2256 (2087.8 , 2439.8)	-12.7 (-15.8 , -9.5)
Eswatini	9148 (8719 , 9553)	2602.9 (2463.8 , 2735.5)	16362 (15605 , 17119)	2476.7 (2347.7 , 2605.9)	-4.8 (-7.7 , -1.6)
Zimbabwe	96979 (91167 , 103222)	1944.5 (1832 , 2065.4)	168183 (157789 , 179079)	1991.8 (1861.4 , 2134.2)	2.4 (-1 , 6)
Western Sub-Saharan Africa	1808146 (1713379 , 1917468)	1695.3 (1588.4 , 1813.5)	3991683 (3783437 , 4209533)	1618.4 (1521.6 , 1721.3)	-4.5 (-6.5 , -2)
Benin	46526 (44040 , 48894)	1904 (1784.8 , 2020.4)	122253 (116116 , 128660)	1928 (1809.2 , 2048.9)	1.3 (-1.5 , 4.2)
Burkina Faso	72450 (68515 , 76226)	1344.5 (1269.6 , 1422.4)	180238 (170496 , 189858)	1452 (1372.1 , 1534.4)	8 (4.8 , 10.9)
Cameroon	120996 (114480 , 127614)	2254.8 (2117.3 , 2394.6)	333003 (315180 , 351183)	2216 (2082.3 , 2360)	-1.7 (-4.9 , 1.5)
Cabo Verde	4110 (3906 , 4328)	1713.4 (1621.4 , 1808.8)	7318 (6951 , 7690)	1514.2 (1436.9 , 1597.8)	-11.6 (-14.9 , -8.5)
Chad	54923 (52013 , 57962)	1641.4 (1542.8 , 1748.6)	128055 (121772 , 134579)	1680.4 (1579.6 , 1784.2)	2.4 (-0.5 , 5.3)

Côte d'Ivoire	103099 (97999 , 107932)	1777.7 (1670.5 , 1887.5)	248534 (236502 , 261568)	1697.7 (1601.1 , 1805)	-4.5 (-7.2 , -2)
Gambia	8944 (8499 , 9411)	1899.5 (1785.4 , 2019.8)	24182 (22965 , 25460)	2004.4 (1882.6 , 2132.9)	5.5 (2.7 , 8.7)
Ghana	120121 (114921 , 125622)	1409.3 (1341.4 , 1485.3)	353063 (335031 , 371410)	1734.3 (1637.8 , 1833.3)	23.1 (19.4 , 26.6)
Guinea	65397 (61747 , 69051)	1731.5 (1624.2 , 1834.9)	134216 (126884 , 141604)	1979.4 (1858.6 , 2108.4)	14.3 (11 , 18.1)
Guinea-Bissau	10332 (9742 , 10929)	2041.2 (1901.9 , 2182.6)	19764 (18753 , 20857)	2031.8 (1908.1 , 2164.6)	-0.5 (-3.6 , 2.8)
Liberia	16399 (15484 , 17293)	1283.1 (1210.1 , 1355.5)	42788 (40388 , 45276)	1520.4 (1430.6 , 1609.4)	18.5 (15.2 , 22.3)
Mali	103367 (96538 , 110605)	2121.2 (1974.8 , 2275.5)	247544 (232568 , 261553)	2326.9 (2175.6 , 2479.6)	9.7 (6.3 , 13.1)
Mauritania	21593 (20455 , 22770)	1825.8 (1716.7 , 1938.4)	42163 (39788 , 44643)	1715.3 (1616 , 1823.6)	-6.1 (-10.2 , -2.4)
Niger	62840 (59577 , 66161)	1633.8 (1529 , 1749.5)	179661 (169575 , 189387)	1718.5 (1606.7 , 1832.1)	5.2 (2 , 8.5)
Nigeria	855433 (795129 , 923742)	1646.1 (1514.7 , 1797.3)	1587743 (1449908 , 1718544)	1356 (1245 , 1478.4)	-17.6 (-21.3 , -13)
Sao Tome and Principe	1750 (1651 , 1851)	2535.5 (2382.8 , 2684.5)	3934 (3787 , 4087)	3392 (3221.6 , 3560)	33.8 (27.4 , 40.8)
Senegal	69441 (65831 , 72810)	1732.2 (1630.1 , 1833.6)	159836 (151194 , 168298)	1758.6 (1655.1 , 1860.8)	1.5 (-1.5 , 4.4)
Sierra Leone	37561 (35682 , 39399)	1672.3 (1576.6 , 1767.8)	86262 (81988 , 90499)	1874.5 (1767 , 1986.5)	12.1 (8.8 , 15.4)
Togo	32803 (31145 , 34368)	1953.1 (1836.8 , 2073.3)	91070 (86074 , 96044)	1969.2 (1849.7 , 2094.9)	0.8 (-2.2 , 3.7)
Eastern Sub-Saharan Africa	1524659 (1435212 , 1621299)	1576.8 (1473.4 , 1690.6)	3292819 (3078465 , 3515414)	1503.5 (1408 , 1608.7)	-4.7 (-6.2 , -2.9)
Burundi	55035 (52126 , 58029)	1913.6 (1791.8 , 2036.7)	106070 (99945 , 112433)	1758.2 (1652.7 , 1871.2)	-8.1 (-11.7 , -5)
Comoros	4080 (3853 , 4312)	1520.1 (1432.8 , 1617.8)	8091 (7559 , 8638)	1475 (1378.8 , 1569)	-3 (-6.6 , 0.6)
Djibouti	3221 (2981 , 3444)	1400 (1303.7 , 1499.7)	11476 (10514 , 12402)	1460.3 (1357.5 , 1573)	4.3 (0.6 , 8.2)
Eritrea	25679 (24242 , 27128)	1778.5 (1657.6 , 1897.6)	67089 (63358 , 71102)	1814.4 (1697.2 , 1939.9)	2 (-1.3 , 5.3)

Ethiopia	420126 (386414 , 455091)	1631.1 (1492.8 , 1792.5)	683970 (612886 , 751405)	1182.2 (1068.1 , 1302.7)	-27.5 (-31.5 , -22.7)
Kenya	183853 (170126 , 199017)	1718.1 (1575.3 , 1882.2)	488588 (452563 , 528500)	1730.4 (1589.6 , 1892.5)	0.7 (-0.4 , 1.9)
Madagascar	122717 (116293 , 129152)	1951.6 (1833.7 , 2069)	304017 (286418 , 321707)	2171 (2027.2 , 2319)	11.2 (8 , 14.5)
Malawi	71428 (66472 , 76365)	1411.6 (1319.4 , 1512.4)	147080 (137355 , 156496)	1492.5 (1404.8 , 1587)	5.7 (2.3 , 9.2)
Mozambique	95739 (88644 , 102826)	1246.5 (1161.8 , 1339.9)	234441 (220557 , 247596)	1557.7 (1460 , 1651)	25 (19.9 , 30.4)
Rwanda	69303 (65700 , 72836)	1907.4 (1794.2 , 2023.6)	134377 (126021 , 143261)	1806.1 (1693.1 , 1937.8)	-5.3 (-8.9 , -1.8)
Somalia	56230 (52735 , 59955)	1586.2 (1482.8 , 1704.9)	147261 (136640 , 157532)	1518.2 (1409.2 , 1627.8)	-4.3 (-7.9 , -0.8)
South Sudan	50044 (46875 , 53197)	1631.5 (1522.9 , 1752.9)	79130 (73518 , 84549)	1568.2 (1458 , 1683.7)	-3.9 (-7.2 , -0.4)
United Republic of Tanzania	175315 (161450 , 187732)	1233.1 (1145.9 , 1316.7)	423197 (389806 , 453143)	1299.5 (1208.3 , 1385.4)	5.4 (2.2 , 8.6)
Uganda	131626 (123059 , 140048)	1561.9 (1455.3 , 1674.5)	303362 (278483 , 326245)	1556.3 (1450.3 , 1661.9)	-0.4 (-3.8 , 3.4)
Zambia	59144 (55677 , 62693)	1521.9 (1427.7 , 1627.9)	152038 (141443 , 161813)	1650 (1551.1 , 1755.4)	8.4 (4.9 , 11.9)
Central Sub-Saharan Africa	482472 (451454 , 514449)	1730.9 (1619.3 , 1860.3)	1270256 (1186242 , 1352608)	1943.2 (1816.7 , 2076.2)	12.3 (9.1 , 15.7)
Angola	87871 (82624 , 93253)	1725.6 (1615.6 , 1847.6)	254081 (236617 , 271195)	1757.6 (1644.6 , 1870.6)	1.9 (-1.8 , 5.3)
Central African Republic	27424 (25723 , 29229)	1920.3 (1789.2 , 2055.7)	52811 (49579 , 56338)	1917.8 (1786.5 , 2053.6)	-0.1 (-3.5 , 3.6)
Congo	25730 (24214 , 27328)	2047 (1917.1 , 2190.5)	63447 (59272 , 67413)	2069.4 (1935.6 , 2208.9)	1.1 (-2.8 , 4.9)
Democratic Republic of the Congo	327331 (304148 , 351116)	1701.1 (1584.4 , 1833)	868445 (808523 , 929199)	1998.8 (1865.5 , 2145.7)	17.5 (13 , 22.7)
Equatorial Guinea	3942 (3691 , 4210)	1701.8 (1589.5 , 1831.9)	11740 (10799 , 12645)	1850.1 (1710.5 , 1992.4)	8.7 (4 , 13.6)
Gabon	10174 (9415 , 10917)	1646.9 (1535.8 , 1767.7)	19732 (18295 , 21159)	1636.9 (1529.6 , 1752.2)	-0.6 (-4 , 2.7)

Table S5: Deaths due to chronic obstructive pulmonary disease in 1990 and 2019 and the percentage change in the age-standardised rates (ASRs) per 100,000, by location
(Generated from data available from <http://ghdx.healthdata.org/gbd-results-tool>)

	1990		2019		Percentage change in the ASRs per 100,000
	No (95% UI)	ASRs per 100,000 (95% UI)	No (95% UI)	ASRs per 100,000 (95% UI)	
Global	2520219 (2118059, 2719388)	73 (61.5, 78.8)	3280636 (2902855, 3572367)	42.5 (37.6, 46.3)	-41.7 (-48, -31.1)
High-income North America	98505 (91237, 111414)	26.5 (24.6, 30)	211434 (173951, 229899)	31.2 (25.9, 33.8)	17.7 (-4.6, 28.6)
Canada	7999 (7353, 8490)	24.6 (22.5, 26.2)	15578 (12650, 18110)	20.3 (16.8, 23.4)	-17.5 (-28.9, -5)
Greenland	20 (16, 23)	81 (62.5, 92.8)	28 (21, 33)	49.1 (35.9, 58.6)	-39.3 (-50.4, -24.5)
United States of America	90485 (83712, 103200)	26.7 (24.8, 30.4)	195825 (161220, 212293)	32.5 (27, 35.2)	21.7 (-2, 33)
Australasia	7096 (6617, 7499)	30.3 (28.2, 32.1)	11398 (9581, 12979)	20.6 (17.4, 23.3)	-32.2 (-39.8, -23.6)
Australia	5801 (5389, 6150)	29.8 (27.6, 31.7)	9293 (7736, 10688)	19.8 (16.6, 22.7)	-33.5 (-42.1, -23.7)
New Zealand	1295 (1207, 1394)	32.7 (30.4, 35.3)	2105 (1789, 2350)	24.5 (21, 27.3)	-25.2 (-33.8, -16.8)
High-income Asia Pacific	24348 (22148, 26103)	14 (12.5, 15.1)	49303 (37721, 63059)	8.2 (6.4, 10.4)	-41.8 (-51.4, -25.6)
Brunei Darussalam	49 (34, 56)	91.6 (59.1, 106.5)	68 (58, 78)	48.9 (40.9, 56)	-46.6 (-55.4, -22.3)
Japan	18923 (17175, 20347)	12.4 (11.1, 13.4)	37910 (27825, 50611)	7.4 (5.6, 9.8)	-40.5 (-51.3, -23.2)
Singapore	804 (689, 860)	47.3 (40.1, 50.9)	635 (526, 854)	9 (7.4, 12.1)	-81 (-83.9, -72.1)
Republic of Korea	4572 (3543, 5215)	24.2 (17, 28.3)	10692 (8785, 12326)	13.2 (10.8, 15.1)	-45.4 (-56.1, -21)
Western Europe	151695 (141500, 163424)	25.2 (23.4, 27.2)	212460 (185963, 233330)	19.2 (17, 21.1)	-23.6 (-29.5, -17.8)
Andorra	13 (10, 17)	31 (23.9, 39.7)	34 (26, 42)	21.6 (16.4, 27.3)	-30.2 (-49.4, -7.2)
Austria	1991 (1831, 2301)	15.9 (14.6, 18.3)	3113 (2667, 3488)	15.4 (13.2, 17.1)	-3.4 (-19.1, 8.9)
Belgium	5324 (4903, 5771)	33.5 (30.8, 36.2)	6693 (5704, 7509)	24.8 (21.4, 27.5)	-26 (-34.4, -16.9)

Cyprus	248 (202 , 292)	44.8 (35.3 , 52.5)	434 (342 , 524)	26.5 (19.2 , 32.1)	-40.9 (-52.6 , -27.9)
Denmark	2887 (2655 , 3077)	33.5 (30.6 , 35.6)	4275 (3364 , 4856)	33.5 (26.4 , 37.9)	-0.1 (-16.9 , 12.5)
Finland	1007 (919 , 1137)	13.8 (12.6 , 15.6)	1602 (1355 , 1858)	11.4 (9.7 , 13.2)	-17.3 (-28.4 , -5.7)
France	17611 (15376 , 19325)	19.6 (17 , 21.4)	17570 (14285 , 21391)	9.8 (8.2 , 11.9)	-49.7 (-57.4 , -38.2)
Germany	30702 (28126 , 35852)	23.1 (21.1 , 26.9)	39894 (34589 , 45760)	18.2 (16 , 20.6)	-21.1 (-29.3 , -12.2)
Greece	2356 (2123 , 2553)	16.4 (14.7 , 17.8)	5961 (4640 , 6957)	18.7 (15 , 21.7)	14.4 (-3.6 , 33.2)
Iceland	59 (52 , 67)	19.5 (17.2 , 22.1)	99 (79 , 114)	15.5 (12.5 , 17.7)	-20.7 (-33.5 , -8.4)
Ireland	2052 (1795 , 2174)	50.6 (44.3 , 53.6)	2183 (1860 , 2525)	27.6 (23.6 , 31.9)	-45.4 (-53 , -37.4)
Israel	1040 (952 , 1124)	23.3 (20.9 , 25.2)	1720 (1488 , 2105)	13.6 (11.9 , 16.6)	-41.5 (-48.4 , -29.5)
Italy	19633 (18354 , 20724)	22 (20.3 , 23.2)	28080 (23682 , 30851)	14.8 (12.6 , 16.2)	-32.8 (-38.9 , -27.1)
Luxembourg	146 (134 , 160)	26.8 (24.6 , 29.5)	196 (162 , 229)	17.5 (14.5 , 20.4)	-34.8 (-44.8 , -22.6)
Malta	85 (77 , 94)	21.2 (18.9 , 23.4)	123 (101 , 146)	11.9 (9.8 , 14.1)	-44 (-54.2 , -32.1)
Monaco	13 (10 , 16)	15 (12 , 19)	16 (13 , 19)	13.7 (11.1 , 16.2)	-8.7 (-30.8 , 17.1)
Netherlands	6428 (5893 , 6875)	30.9 (28.3 , 33.1)	9993 (8160 , 11442)	26.4 (21.7 , 30.1)	-14.5 (-28.3 , -2.4)
Norway	1064 (984 , 1245)	14.1 (13 , 16.3)	2477 (1910 , 2716)	23 (17.7 , 25.2)	63.5 (18.6 , 80.8)
Portugal	3612 (3336 , 4032)	28.4 (25.9 , 31.3)	6191 (5221 , 7102)	20.4 (17.5 , 23.4)	-28 (-37.4 , -17.5)
San Marino	4 (4 , 5)	13.4 (11.1 , 16.2)	9 (6 , 12)	11.3 (7.8 , 15.5)	-15.4 (-41.4 , 19.4)
Spain	18514 (16816 , 19749)	34.5 (31.1 , 37)	31245 (25155 , 36629)	24.4 (20.4 , 28.2)	-29.2 (-38.1 , -18.6)
Sweden	1833 (1664 , 2181)	10.9 (9.9 , 12.9)	3789 (2955 , 4324)	14.9 (11.6 , 17)	36.9 (0.2 , 58.6)
Switzerland	2049 (1853 , 2220)	18.3 (16.5 , 19.8)	2632 (2200 , 3012)	12.7 (10.7 , 14.4)	-30.8 (-39 , -21.1)

United Kingdom	32896 (30924 , 37005)	34.1 (31.9 , 38.5)	43945 (37736 , 49042)	30.7 (26.6 , 34.1)	-10.1 (-22 , 0.3)
Southern Latin America	10905 (10056 , 12006)	25.8 (23.6 , 28.8)	22686 (19735 , 25346)	26.4 (23 , 29.5)	2.1 (-10.5 , 15.1)
Argentina	7946 (7269 , 9012)	26.8 (24.3 , 30.8)	16396 (14191 , 18511)	29.4 (25.5 , 33.2)	9.9 (-6.6 , 25.9)
Chile	1982 (1704 , 2132)	23.6 (20 , 25.5)	4410 (3607 , 5386)	18.6 (15.1 , 22.6)	-21.1 (-33.1 , -5.6)
Uruguay	976 (876 , 1129)	25 (22.5 , 29.2)	1879 (1638 , 2076)	30.8 (27 , 33.9)	22.8 (3 , 41)
Eastern Europe	87601 (69923 , 93632)	33.9 (26.6 , 36.4)	52359 (45826 , 66095)	15 (13.1 , 18.9)	-55.8 (-61.9 , -35.7)
Belarus	5567 (3970 , 6264)	45.1 (31.7 , 50.9)	2241 (1701 , 3462)	13.7 (10.4 , 21.1)	-69.6 (-77.8 , -37.8)
Estonia	234 (215 , 260)	11.7 (10.8 , 13.1)	258 (203 , 328)	8.6 (6.7 , 10.9)	-26.7 (-42.4 , -8.4)
Latvia	533 (493 , 571)	15.1 (13.9 , 16.2)	376 (302 , 516)	8.5 (6.8 , 11.5)	-43.6 (-54.8 , -26.3)
Lithuania	1318 (1123 , 1405)	29.3 (25 , 31.3)	719 (583 , 932)	11.2 (9 , 14.4)	-62 (-69.8 , -46.5)
Republic of Moldova	1676 (1374 , 1797)	43.3 (34.8 , 46.7)	922 (781 , 1136)	15.9 (13.5 , 19.6)	-63.4 (-69.5 , -48.8)
Russian Federation	47723 (39012 , 51242)	28.7 (23 , 30.9)	36483 (31203 , 43147)	15.4 (13.2 , 18.3)	-46.3 (-54.3 , -26.6)
Ukraine	30550 (23854 , 33289)	45.4 (35 , 49.6)	11360 (9083 , 17014)	14.8 (11.9 , 22.1)	-67.4 (-74.9 , -42.9)
Central Europe	41393 (38387 , 42759)	30.4 (28 , 31.5)	38799 (33680 , 44779)	17.3 (15 , 19.9)	-43.2 (-50.4 , -34.5)
Albania	723 (483 , 797)	43.3 (28.2 , 48)	603 (453 , 780)	14.4 (10.9 , 18.6)	-66.7 (-75.5 , -45.5)
Bosnia and Herzegovina	1033 (899 , 1108)	32.4 (27.8 , 34.9)	1109 (878 , 1363)	19.3 (15.3 , 23.6)	-40.4 (-52.4 , -26.1)
Bulgaria	3314 (2983 , 3560)	31.1 (27.5 , 33.4)	2873 (2275 , 3603)	19.3 (15.3 , 24.1)	-37.8 (-51.2 , -20.1)
Croatia	995 (907 , 1091)	17 (15.4 , 18.7)	1780 (1390 , 2194)	18.4 (14.5 , 22.7)	8.6 (-14.6 , 34.7)
Czechia	2652 (2461 , 3121)	19.6 (18.1 , 23.2)	3651 (2942 , 4396)	16.4 (13.2 , 19.7)	-16.3 (-34 , 2.5)

Hungary	4808 (4513 , 5533)	35 (32.5 , 40.2)	5575 (4582 , 6677)	27.7 (22.8 , 33.1)	-20.7 (-34.4 , -4)
Montenegro	47 (38 , 55)	8.6 (6.9 , 10.1)	77 (62 , 90)	8.4 (6.7 , 9.9)	-2.3 (-23.2 , 18.8)
North Macedonia	508 (431 , 556)	33.3 (28 , 36.8)	584 (462 , 762)	22.2 (17.8 , 28.6)	-33.3 (-47.9 , -7.9)
Poland	10921 (10228 , 11342)	25.9 (24.1 , 27)	10259 (8580 , 12468)	13.8 (11.6 , 16.7)	-46.7 (-55.2 , -35.2)
Romania	12199 (9726 , 13136)	51.2 (39.9 , 55.3)	7277 (5869 , 8962)	18.6 (15 , 22.8)	-63.7 (-71.5 , -47.3)
Serbia	2713 (2404 , 3210)	27.2 (24.1 , 32.6)	3428 (2759 , 4268)	22.3 (18 , 27.5)	-18.2 (-35.3 , 0.3)
Slovakia	878 (787 , 1295)	15.4 (13.7 , 22.3)	1012 (793 , 1316)	11 (8.7 , 14.3)	-28.3 (-43.5 , -10.2)
Slovenia	602 (471 , 747)	25.4 (20 , 31.4)	571 (443 , 725)	11.2 (8.8 , 14.3)	-55.7 (-67.9 , -39.9)
Central Asia	15802 (13515 , 16861)	37.6 (32.2 , 40.3)	17223 (15377 , 20011)	31.5 (27.9 , 36.8)	-16.4 (-26.6 , 6.4)
Armenia	962 (799 , 1036)	43.6 (35.3 , 47.2)	1197 (932 , 1435)	30.6 (23.5 , 36.7)	-29.8 (-42.2 , -15.4)
Azerbaijan	1356 (1188 , 1530)	29.7 (25.8 , 34.1)	1512 (1184 , 2281)	24.9 (18.7 , 38.9)	-16.1 (-37.8 , 26.1)
Georgia	729 (627 , 1045)	14.3 (12.3 , 20.9)	1000 (793 , 1392)	15.6 (12.4 , 21.3)	9.2 (-11.8 , 33.8)
Kazakhstan	5264 (4683 , 5767)	46.5 (41.1 , 51)	8051 (6730 , 9545)	56.7 (47.3 , 67)	22 (1 , 44.7)
Kyrgyzstan	2471 (1863 , 2735)	86 (64.2 , 95.2)	1434 (1217 , 1778)	39.3 (33.4 , 49)	-54.3 (-62.3 , -31.6)
Mongolia	322 (259 , 383)	36.3 (28.6 , 43.1)	307 (243 , 402)	19.6 (16 , 24.7)	-46 (-58.3 , -26.6)
Tajikistan	1037 (860 , 1218)	38.2 (31.5 , 45.4)	1133 (892 , 1727)	32.6 (24.8 , 54.4)	-14.7 (-36.4 , 48.5)
Turkmenistan	596 (462 , 670)	37.4 (28.5 , 42.1)	366 (266 , 662)	11.3 (8.2 , 21.1)	-69.9 (-78.8 , -34.2)
Uzbekistan	3064 (2239 , 3652)	29.9 (21.9 , 35.6)	2222 (1756 , 3308)	18.9 (15 , 32.2)	-36.8 (-53.9 , 32.4)
Central Latin America	22412 (20220 , 23491)	33.4 (30 , 35.2)	64353 (54767 , 74217)	29.2 (24.9 , 33.7)	-12.6 (-22.9 , -0.6)
Colombia	5198 (4466 , 5580)	36.3 (31.4 , 39.2)	16348 (12052 , 20722)	29.2 (21.6 , 37)	-19.4 (-37.3 , 0.1)

Costa Rica	389 (337 , 433)	24.9 (21.5 , 27.8)	1204 (908 , 1515)	23.2 (17.5 , 29.2)	-6.6 (-25.2 , 17.4)
El Salvador	603 (515 , 690)	21.8 (18.7 , 25.1)	1200 (876 , 1481)	18.1 (13.5 , 22.5)	-16.9 (-38 , 4.4)
Guatemala	679 (589 , 789)	27.2 (23.6 , 31.6)	1859 (1458 , 2399)	21.2 (16.8 , 26.9)	-22.1 (-37.2 , -3.6)
Honduras	771 (573 , 931)	42 (29.9 , 53.2)	2859 (1731 , 3671)	57.4 (33.7 , 73.1)	36.5 (0.1 , 78.4)
Mexico	12719 (11298 , 13309)	38.9 (34.1 , 40.9)	32781 (27521 , 38201)	31.7 (26.5 , 36.9)	-18.3 (-29 , -6)
Nicaragua	264 (231 , 307)	21.2 (18.1 , 25)	1169 (872 , 1353)	35.6 (26.3 , 41.1)	68.5 (15.6 , 99.1)
Panama	263 (230 , 300)	19.2 (16.6 , 22)	717 (533 , 901)	16.5 (12.2 , 20.8)	-14 (-32.3 , 6.5)
Venezuela (Bolivarian Republic of)	1527 (1362 , 1753)	18.8 (16.6 , 21.8)	6217 (4778 , 7920)	23.1 (17.7 , 29.4)	22.7 (-6.1 , 55.9)
Andean Latin America	3682 (3196 , 4181)	20.5 (17.7 , 23.9)	8060 (6395 , 9930)	15.4 (12.2 , 18.9)	-24.9 (-40 , -7)
Bolivia (Plurinational State of)	1112 (866 , 1333)	43.8 (35.6 , 51.6)	2431 (1869 , 3086)	35.9 (27.7 , 45.2)	-18.1 (-36.3 , 5)
Ecuador	1126 (929 , 1232)	26.3 (21.7 , 28.8)	2667 (2084 , 3351)	22.3 (17.1 , 27.8)	-15.1 (-31.5 , 7.6)
Peru	1443 (1171 , 1888)	13.1 (10.6 , 18)	2962 (2140 , 3973)	9 (6.5 , 12.2)	-31.2 (-52.8 , -1.9)
Caribbean	4483 (3990 , 4967)	18.7 (16.8 , 20.8)	10651 (8894 , 12381)	20.6 (17.2 , 23.9)	9.7 (-8.4 , 26.6)
Antigua and Barbuda	4 (4 , 5)	7.4 (6.5 , 8.4)	7 (6 , 9)	8.4 (6.8 , 10.1)	13.1 (-8.9 , 38)
Barbados	23 (20 , 27)	7.2 (6.3 , 8.3)	41 (33 , 50)	8.3 (6.6 , 10)	14.3 (-8.9 , 40.3)
Belize	14 (12 , 16)	15.5 (12.9 , 18)	50 (42 , 59)	20.6 (17.2 , 24.5)	33.2 (6.8 , 68.2)
Bermuda	7 (6 , 8)	11.8 (10.1 , 13.7)	12 (10 , 15)	8.6 (6.9 , 10.8)	-26.8 (-40.3 , -8)
Bahamas	13 (12 , 15)	10.2 (8.8 , 11.7)	33 (26 , 41)	9.7 (7.8 , 12.1)	-4.7 (-25 , 20.9)

Cuba	1551 (1423 , 1663)	15.7 (14.3 , 16.9)	4233 (3272 , 5201)	21.2 (16.3 , 26)	35.4 (4.4 , 65.1)
Dominica	11 (10 , 14)	15.2 (13.3 , 18.1)	15 (12 , 19)	16.8 (13.2 , 20.6)	10.9 (-22.1 , 41.9)
Dominican Republic	385 (329 , 453)	12.9 (10.9 , 15)	1362 (1021 , 1764)	16 (12.1 , 20.6)	24 (-7.7 , 65.2)
Grenada	12 (11 , 14)	15.2 (13.2 , 17.4)	14 (12 , 16)	14.4 (12.4 , 16.5)	-5.2 (-20.9 , 12.5)
Guyana	47 (39 , 55)	15.2 (12.9 , 17.7)	77 (60 , 97)	15.1 (11.8 , 18.6)	-0.8 (-24.1 , 27.4)
Haiti	1089 (668 , 1532)	42 (25.6 , 63.2)	2013 (1263 , 2836)	37.4 (23.4 , 53.1)	-11 (-33.2 , 18.6)
Jamaica	249 (222 , 286)	13.6 (12.1 , 15.6)	526 (405 , 662)	16.9 (13 , 21.3)	24.7 (-3.7 , 58.1)
Puerto Rico	735 (650 , 808)	21.6 (18.8 , 23.8)	1552 (1182 , 1978)	17.9 (13.8 , 22.9)	-16.9 (-34.6 , 5.7)
Saint Kitts and Nevis	6 (5 , 7)	16.8 (14.7 , 19.3)	8 (7 , 10)	15.4 (13 , 18.1)	-8.3 (-24.2 , 12)
Saint Lucia	19 (17 , 22)	24.6 (22 , 27.6)	44 (36 , 53)	21.9 (17.7 , 26)	-11 (-27.4 , 9.2)
Saint Vincent and the Grenadines	6 (5 , 7)	9.3 (8.1 , 10.8)	14 (12 , 16)	11.4 (9.6 , 13.2)	21.5 (-3.3 , 47.2)
Suriname	41 (37 , 48)	17.6 (15.7 , 20.5)	85 (70 , 101)	15.5 (12.8 , 18.4)	-12.1 (-28.2 , 6.4)
Trinidad and Tobago	111 (102 , 121)	15.2 (13.9 , 16.5)	182 (134 , 246)	10.4 (7.6 , 14)	-31.7 (-49.6 , -9.9)
United States Virgin Islands	8 (7 , 10)	12.1 (10 , 14.8)	21 (17 , 24)	11.7 (9.5 , 13.8)	-2.9 (-24.6 , 19.7)
Tropical Latin America	35653 (32641 , 37392)	49.7 (44.7 , 52.4)	69670 (62026 , 78843)	30.6 (27.2 , 34.7)	-38.4 (-43 , -31.4)
Brazil	35317 (32304 , 37038)	50.7 (45.6 , 53.6)	68697 (61265 , 77839)	30.9 (27.5 , 35.1)	-39.1 (-43.7 , -32.2)
Paraguay	336 (288 , 447)	16.9 (14.3 , 22.7)	973 (748 , 1244)	18.9 (14.5 , 24.3)	12.2 (-17.2 , 44.1)
East Asia	1264949 (928362 , 1417333)	212.8 (159.4 , 236.6)	1075491 (924684 , 1301425)	64.6 (55.3 , 78.9)	-69.6 (-74.8 , -53.4)
China	1243959 (911618 , 1395432)	217.9 (163.3 , 242)	1037475 (888769 , 1265528)	65.2 (55.5 , 80.1)	-70.1 (-75.3 , -53.9)

Democratic People's Republic of Korea	17880 (12984 , 23335)	161.9 (116.5 , 214.2)	29492 (23715 , 35406)	105.2 (84.5 , 127.5)	-35 (-51.4 , -13.5)
Taiwan (Province of China)	3110 (2737 , 3371)	28.8 (25.1 , 31.6)	8523 (6702 , 10938)	20.8 (16.3 , 26.6)	-28 (-43.5 , -3)
Southeast Asia	114489 (89053 , 128621)	58.1 (44.8 , 65)	189004 (160173 , 210432)	38.8 (33.2 , 43)	-33.3 (-42.1 , -20.5)
Cambodia	1559 (1250 , 1836)	46.4 (37.1 , 54.5)	3492 (2698 , 4117)	39.1 (30.3 , 45.9)	-15.8 (-33.6 , 7.2)
Indonesia	39969 (33866 , 45768)	56 (47.4 , 64.1)	71731 (59129 , 82628)	45.7 (38.2 , 52.1)	-18.3 (-34.2 , -0.5)
Lao People's Democratic Republic	1339 (1005 , 1683)	80 (61 , 100.1)	1776 (1412 , 2230)	54.1 (43.3 , 67.4)	-32.4 (-47.9 , -13.8)
Malaysia	3443 (2839 , 4122)	47 (38.7 , 57)	6127 (4820 , 8104)	29 (22.8 , 38.2)	-38.4 (-56.3 , -5.7)
Maldives	66 (49 , 81)	108.7 (82.9 , 128.4)	92 (75 , 110)	40 (32.9 , 47.8)	-63.2 (-71 , -50.3)
Mauritius	177 (155 , 194)	31.1 (26.6 , 34.2)	293 (230 , 377)	19.1 (15 , 24.7)	-38.4 (-52 , -14.2)
Myanmar	21105 (15494 , 26332)	117.2 (86.3 , 143.7)	31231 (23400 , 36459)	85.4 (63.4 , 98.4)	-27.1 (-40.7 , -9.4)
Philippines	10591 (9065 , 12397)	50.2 (43.4 , 58.1)	20982 (17050 , 25899)	33.9 (27.9 , 43.1)	-32.4 (-47.7 , -12.3)
Sri Lanka	2604 (2122 , 3034)	31.1 (25 , 36.7)	5027 (3407 , 6736)	23.6 (15.9 , 31.3)	-24.1 (-50.1 , 9.6)
Seychelles	18 (15 , 21)	33 (26.1 , 37.6)	23 (19 , 27)	25.2 (20.6 , 29.1)	-23.6 (-34.5 , -10.2)
Thailand	15358 (12449 , 17928)	54.2 (44.3 , 63.4)	19170 (14406 , 25179)	19.8 (14.9 , 26)	-63.5 (-73.7 , -49.2)
Timor-Leste	119 (88 , 157)	61.1 (45.9 , 80.1)	359 (272 , 467)	56.4 (43.1 , 72)	-7.8 (-30.2 , 19.7)
Viet Nam	17987 (6822 , 22849)	52.1 (19.6 , 66)	28454 (10671 , 35618)	37.8 (14.4 , 47.2)	-27.4 (-46.1 , -0.5)
Oceania	2813 (2265 , 3426)	127.1 (102.1 , 152.4)	5785 (4503 , 7386)	112.1 (86.8 , 139.9)	-11.8 (-29 , 7.2)
American Samoa	12 (10 , 13)	70 (59.2 , 79.7)	17 (14 , 21)	42.8 (36.1 , 52.8)	-38.9 (-51 , -20.8)
Cook Islands	5 (4 , 6)	52.5 (42.3 , 60.8)	6 (5 , 7)	24.4 (19.7 , 29.5)	-53.6 (-62.1 , -42.6)

Micronesia (Federated States of)	42 (33 , 53)	111 (86.9 , 139.4)	38 (28 , 50)	74.9 (58.3 , 94.9)	-32.5 (-50.5 , -10.8)
Fiji	116 (91 , 153)	44.8 (35.3 , 59)	149 (114 , 193)	27.4 (21.4 , 35)	-38.8 (-60 , -14.4)
Guam	21 (19 , 24)	44.8 (38.7 , 50.8)	38 (30 , 47)	20.4 (16.5 , 25.1)	-54.6 (-63.6 , -44.4)
Kiribati	21 (17 , 26)	70.5 (57.2 , 84.8)	28 (21 , 36)	56.6 (43.7 , 69.5)	-19.7 (-40.2 , 2.4)
Marshall Islands	14 (11 , 19)	101.8 (78.5 , 138.5)	17 (12 , 23)	71.9 (53.3 , 95.1)	-29.4 (-48.3 , -11)
Nauru	3 (2 , 4)	105.1 (79.2 , 129.5)	2 (1 , 2)	71.7 (55.1 , 87.5)	-31.8 (-46.4 , -12.1)
Niue	2 (1 , 2)	66.9 (53 , 82)	1 (1 , 1)	43 (33.3 , 53.3)	-35.7 (-49.3 , -19.6)
Northern Mariana Islands	7 (6 , 9)	63 (53.3 , 72.8)	13 (11 , 16)	38.3 (32.9 , 45.9)	-39.3 (-49.1 , -21.7)
Palau	7 (6 , 10)	99.2 (78.7 , 127.8)	10 (8 , 13)	71 (57.1 , 85.6)	-28.4 (-48.7 , -6.5)
Papua New Guinea	2127 (1656 , 2617)	159.7 (125.1 , 194.9)	4739 (3596 , 6212)	145 (107.9 , 184.2)	-9.2 (-28.2 , 12.3)
Samoa	68 (55 , 91)	92.9 (75 , 123.9)	72 (58 , 92)	58 (47 , 73.3)	-37.6 (-53.3 , -19.8)
Solomon Islands	120 (89 , 170)	113.9 (86.6 , 159.1)	232 (178 , 289)	103 (81.5 , 123.2)	-9.6 (-30.7 , 14)
Tokelau	1 (1 , 1)	83.4 (67.6 , 103.5)	1 (0 , 1)	45.4 (36.1 , 56.7)	-45.6 (-58.2 , -30.4)
Tonga	25 (21 , 30)	56 (46 , 66.3)	30 (24 , 36)	39.5 (31.7 , 47.4)	-29.4 (-45.8 , -6.7)
Tuvalu	6 (5 , 8)	108.7 (85.9 , 139.1)	5 (4 , 7)	61.1 (47.8 , 78.6)	-43.8 (-59.5 , -24)
Vanuatu	58 (40 , 80)	112.4 (78.9 , 154.3)	114 (85 , 150)	83.3 (63.2 , 107.9)	-25.9 (-43.8 , -3.4)
North Africa and Middle East	43173 (37093 , 49741)	31.8 (26.9 , 36.7)	89920 (76785 , 101801)	26.1 (22.2 , 29.5)	-18 (-30.9 , -2.8)
Afghanistan	2877 (1624 , 3849)	48 (25.8 , 64.5)	3932 (2506 , 5144)	40.4 (24.2 , 52.6)	-15.7 (-36.2 , 7.8)
Algeria	2164 (1641 , 2768)	29.3 (22.7 , 37)	4905 (3836 , 6207)	20.5 (16 , 25.7)	-29.9 (-45.6 , -8.7)

Bahrain	58 (49 , 67)	60.5 (50.6 , 69.2)	111 (88 , 142)	28.9 (23.5 , 35.7)	-52.3 (-62.3 , -37.4)
Egypt	6881 (4992 , 8469)	28.9 (20.9 , 37.2)	14052 (9238 , 18627)	28.2 (18.5 , 36.8)	-2.6 (-27.6 , 30.7)
Iran (Islamic Republic of)	4230 (3709 , 5228)	23.4 (20.1 , 29.4)	12557 (10993 , 13621)	20.3 (17.7 , 22.1)	-13 (-30.5 , 1.7)
Iraq	785 (624 , 1000)	11.7 (9.3 , 14.7)	1711 (1343 , 2143)	9.8 (7.8 , 12.6)	-15.9 (-41 , 12.6)
Jordan	245 (193 , 294)	25.9 (20.7 , 31.2)	555 (450 , 680)	12.2 (9.9 , 15)	-53 (-64.7 , -37.4)
Kuwait	38 (32 , 43)	9.6 (8 , 11)	148 (117 , 182)	8.3 (6.5 , 10.3)	-12.7 (-30.8 , 8.4)
Lebanon	381 (294 , 484)	21.5 (16.7 , 27.3)	850 (631 , 1107)	16.8 (12.6 , 21.8)	-21.8 (-40.2 , 2)
Libya	286 (213 , 372)	17.8 (13.3 , 23.2)	760 (561 , 973)	17.6 (13.1 , 22.5)	-1.2 (-30.3 , 34.3)
Morocco	2346 (1718 , 3094)	21.7 (15.7 , 28.7)	5935 (4494 , 7387)	24.1 (18.6 , 29.7)	11.1 (-15.1 , 49.9)
Palestine	192 (146 , 273)	25.9 (19.8 , 36.8)	285 (234 , 368)	16.4 (13.4 , 21.4)	-36.5 (-61.4 , -14)
Oman	154 (114 , 207)	34.2 (25.3 , 46.2)	202 (155 , 235)	23 (16.8 , 27.2)	-32.7 (-52.1 , -9.3)
Qatar	15 (12 , 21)	26.6 (20.9 , 38)	49 (36 , 77)	20.2 (15.5 , 28.6)	-24.1 (-47.2 , 1.8)
Saudi Arabia	1433 (1073 , 2089)	33.6 (25.1 , 47.7)	2119 (1685 , 2576)	19.6 (15.9 , 23.4)	-41.4 (-61.9 , -20)
Sudan	2909 (1642 , 4231)	36.5 (20.6 , 53.2)	4390 (2883 , 6190)	28.7 (18.9 , 40.1)	-21.5 (-41.2 , 6.9)
Syrian Arab Republic	987 (734 , 1391)	21.9 (16 , 32.5)	1908 (1367 , 2781)	20.9 (15.4 , 30.4)	-4.8 (-30.6 , 33.8)
Tunisia	723 (568 , 976)	19.1 (14.9 , 25.4)	1831 (1325 , 2497)	16.8 (12.1 , 22.9)	-12 (-35.3 , 18.2)
Turkey	14764 (12162 , 16911)	48.4 (39.3 , 55.9)	29015 (19528 , 35902)	35.8 (24 , 44.4)	-26.1 (-46.4 , -4.1)
United Arab Emirates	141 (86 , 192)	41.9 (29.8 , 57.2)	1090 (653 , 1561)	31.2 (22.8 , 41.3)	-25.6 (-50.4 , 5.3)
Yemen	1538 (968 , 2198)	40.1 (25.8 , 58.2)	3423 (2591 , 4521)	33 (25 , 42.9)	-17.8 (-41.7 , 16)

South Asia	528644 (433171 , 614467)	133.8 (109.7 , 156.3)	1048730 (838382 , 1216097)	93.2 (74.5 , 107.8)	-30.3 (-43.4 , -17.3)
Bangladesh	43185 (33718 , 60272)	109.2 (84.5 , 160)	55647 (40984 , 94073)	49.5 (36.8 , 86.5)	-54.6 (-65.1 , -41.5)
Bhutan	213 (152 , 287)	123.5 (89.9 , 165.1)	468 (349 , 643)	102.5 (77.1 , 138.1)	-17 (-36.9 , 10.4)
India	424556 (347949 , 493720)	146.4 (120 , 170.7)	898445 (691584 , 1058389)	98 (75.8 , 115.5)	-33 (-46 , -20)
Nepal	13644 (9356 , 16816)	199.8 (136.2 , 245)	31498 (23229 , 37330)	182.5 (135.7 , 214.7)	-8.7 (-29.1 , 15.7)
Pakistan	47045 (35527 , 62223)	97.5 (74 , 130)	62673 (50139 , 78051)	79.6 (63.8 , 98.6)	-18.4 (-37.9 , 3.2)
Southern Sub-Saharan Africa	8984 (7603 , 11178)	39.1 (32.8 , 48.4)	14902 (13485 , 16303)	32.4 (29 , 35.4)	-17.1 (-32.7 , -1.8)
Botswana	253 (172 , 387)	56.5 (38.5 , 85.4)	405 (276 , 540)	39.3 (27.2 , 51.9)	-30.4 (-51.2 , -3.8)
Lesotho	616 (418 , 869)	74.1 (50.3 , 103.9)	712 (504 , 972)	70.7 (50.2 , 95.1)	-4.6 (-33.6 , 28.5)
Namibia	386 (271 , 524)	62.8 (44.2 , 86.3)	534 (403 , 686)	45 (33.5 , 58)	-28.4 (-44 , -5.9)
South Africa	6805 (5823 , 8274)	37.9 (32.1 , 46.2)	11843 (10780 , 13332)	31.8 (28.6 , 35.9)	-16.2 (-29.2 , 0.2)
Eswatini	135 (95 , 191)	58.3 (40.9 , 83.3)	192 (143 , 253)	42.2 (31.3 , 55)	-27.5 (-48.1 , -0.4)
Zimbabwe	790 (628 , 962)	26.5 (20.8 , 31.7)	1217 (842 , 1582)	23.9 (16.7 , 31.1)	-9.5 (-44.5 , 20.2)
Western Sub-Saharan Africa	21048 (17374 , 25154)	29.5 (24.4 , 34.8)	35495 (29696 , 40964)	24.3 (20.5 , 27.8)	-17.5 (-32.3 , -3.8)
Benin	664 (534 , 816)	37.7 (30.2 , 46)	1016 (779 , 1321)	25.9 (20.1 , 32.8)	-31.3 (-47.1 , -9.1)
Burkina Faso	781 (609 , 988)	22.8 (18.1 , 28.8)	1391 (1122 , 1724)	19 (15.5 , 23.2)	-16.3 (-35.2 , 6.2)
Cameroon	1294 (990 , 1578)	37.6 (29 , 45.5)	2311 (1583 , 3034)	25 (17.8 , 32.3)	-33.3 (-50.3 , -11.9)
Cabo Verde	84 (56 , 98)	34.8 (23.3 , 40.3)	73 (58 , 100)	17.9 (14.4 , 24.6)	-48.5 (-59.4 , 0.2)
Chad	909 (692 , 1291)	36.2 (27.5 , 51.2)	1405 (1045 , 1831)	31.1 (23.2 , 39.7)	-14.2 (-35.5 , 10.2)

Côte d'Ivoire	1062 (804, 1328)	37.6 (29.3, 45.6)	1950 (1472, 2498)	25 (19.5, 31.2)	-33.3 (-50.5, -12.4)
Gambia	95 (70, 128)	34.3 (25.7, 44.4)	244 (185, 311)	30.4 (23.3, 38.5)	-11.4 (-35.9, 18.8)
Ghana	1378 (880, 1755)	28.9 (18.4, 36)	3286 (1973, 4138)	25.6 (15.6, 31.8)	-11.3 (-40.8, 17.2)
Guinea	1049 (815, 1350)	36.7 (28.5, 47.3)	1478 (1123, 1863)	31.1 (24, 38.9)	-15.1 (-37.5, 13.1)
Guinea-Bissau	170 (130, 216)	49.8 (38.2, 62.3)	197 (144, 256)	34.5 (25.8, 44.3)	-30.8 (-49.3, -8.6)
Liberia	207 (167, 260)	21.6 (17.4, 27.2)	292 (213, 405)	18.5 (13.8, 25.3)	-14.3 (-34.5, 12.9)
Mali	1355 (1026, 1683)	37.8 (29.5, 46.2)	2476 (1849, 3175)	33.6 (26, 41.9)	-11.1 (-31.2, 14.6)
Mauritania	264 (184, 328)	30.5 (21.6, 38)	320 (246, 405)	18.7 (14.6, 23.3)	-38.8 (-52.7, -17.9)
Niger	817 (597, 1170)	37.5 (27.8, 53.1)	1790 (1281, 2557)	30.6 (22.4, 43)	-18.4 (-35.9, 5.5)
Nigeria	8995 (7044, 11435)	25.1 (19.6, 31.3)	14120 (10738, 17549)	21.8 (16.9, 26.8)	-13.1 (-35, 13.1)
Sao Tome and Principe	32 (25, 37)	57.6 (46.6, 67.7)	48 (37, 60)	58.4 (44.2, 71.6)	1.5 (-22.7, 29.1)
Senegal	950 (735, 1217)	35.8 (28.3, 45)	1579 (1240, 1948)	25.8 (20.5, 31.4)	-27.9 (-43.9, -5.8)
Sierra Leone	599 (459, 753)	35.6 (27.3, 44.5)	802 (591, 1054)	27.3 (20.4, 34.9)	-23.3 (-40.8, 0.8)
Togo	340 (266, 417)	35.2 (27.6, 42.6)	717 (527, 942)	26.1 (19.7, 33.9)	-25.9 (-44.2, -2.4)
Eastern Sub-Saharan Africa	24221 (20003, 30111)	40.3 (31.8, 49.5)	37076 (31613, 43459)	29.3 (25.1, 33.7)	-27.2 (-36.3, -17.6)
Burundi	1241 (929, 1577)	60.4 (45.2, 75.9)	1464 (1100, 1924)	42.5 (32.3, 54.7)	-29.6 (-46.4, -6.9)
Comoros	74 (49, 99)	39 (27.4, 52.1)	109 (84, 141)	26 (20.2, 33.3)	-33.5 (-48.6, -7.7)
Djibouti	28 (18, 41)	29.4 (18.5, 39.9)	86 (53, 127)	21.3 (13.5, 30.3)	-27.8 (-46.2, -2)
Eritrea	311 (211, 413)	40.9 (27.2, 54.4)	637 (447, 820)	32.9 (22.7, 41.8)	-19.6 (-41.3, 14.3)

Ethiopia	7571 (5989 , 9200)	46.4 (36.4 , 56.4)	9309 (7480 , 10922)	28.3 (22.7 , 33.4)	-38.9 (-50.1 , -24.4)
Kenya	2138 (1597 , 3449)	32.8 (24.5 , 53.3)	5081 (3957 , 6680)	30.8 (23.7 , 40.8)	-6 (-27.6 , 10.9)
Madagascar	2014 (1682 , 2430)	47.4 (37 , 57.4)	3317 (2390 , 4440)	43 (30.9 , 56)	-9.2 (-32.7 , 17.6)
Malawi	935 (738 , 1183)	31 (23.7 , 38.7)	1450 (1148 , 1769)	24.8 (19.7 , 30)	-20.1 (-36.8 , -0.9)
Mozambique	1227 (871 , 1666)	26.7 (17.8 , 35.6)	2182 (1662 , 2900)	25.5 (19.6 , 33)	-4.3 (-29.8 , 27.5)
Rwanda	1499 (1111 , 1897)	62 (46.2 , 77)	1620 (1265 , 2093)	35.6 (27.7 , 45.8)	-42.6 (-54.9 , -21.7)
Somalia	987 (670 , 1599)	52.2 (36.2 , 86.1)	1991 (1263 , 3200)	40 (26 , 63.3)	-23.4 (-41.7 , 2.3)
South Sudan	727 (474 , 985)	36.2 (24 , 48.6)	757 (511 , 1048)	26.6 (18.5 , 35.6)	-26.5 (-44.8 , -1.1)
United Republic of Tanzania	2325 (1829 , 2832)	26.4 (20.1 , 32)	4259 (3417 , 5100)	21.3 (17.1 , 25.4)	-19.3 (-35.4 , -0.4)
Uganda	2326 (1606 , 3594)	44.1 (30.6 , 68)	3322 (2431 , 4316)	30.2 (22.3 , 39.3)	-31.6 (-49.7 , -10.3)
Zambia	801 (631 , 1013)	35.9 (27.4 , 45.4)	1462 (1150 , 1793)	28.9 (22.9 , 34.9)	-19.5 (-40.7 , 5.1)
Central Sub-Saharan Africa	8324 (6053 , 11175)	52.3 (37.8 , 71.9)	15836 (11070 , 23448)	42.6 (29.6 , 66.7)	-18.6 (-36 , 3)
Angola	1325 (982 , 1765)	47.8 (35.3 , 65.8)	2245 (1673 , 2864)	30.6 (23.1 , 39.2)	-36.1 (-51.5 , -14.1)
Central African Republic	532 (374 , 756)	61.6 (42.3 , 91.2)	802 (535 , 1137)	53.1 (35.1 , 79.3)	-13.9 (-33.7 , 9.9)
Congo	430 (305 , 576)	54.3 (38.4 , 75.4)	619 (449 , 800)	34.6 (26.2 , 44.2)	-36.2 (-50.4 , -18.6)
Democratic Republic of the Congo	5775 (3981 , 7941)	53.4 (37 , 75.2)	11865 (7720 , 18665)	46.6 (30.2 , 77.2)	-12.7 (-35.1 , 14.1)
Equatorial Guinea	80 (54 , 114)	52.3 (35.1 , 76.1)	101 (65 , 164)	30.1 (19.7 , 50.5)	-42.5 (-62.9 , -13.8)
Gabon	182 (124 , 227)	39.8 (26.5 , 50.2)	204 (141 , 263)	25.7 (17.9 , 32.9)	-35.5 (-54.8 , -15.5)

Table S6: DALYs due to chronic obstructive pulmonary disease in 1990 and 2019 and the percentage change in the age-standardised rates (ASRs) per 100,000, by location
 (Generated from data available from <http://ghdx.healthdata.org/gbd-results-tool>)

	1990		2019		Percentage change in the ASRs per 100,000
	No (95% UI)	ASRs per 100,000 (95% UI)	No (95% UI)	ASRs per 100,000 (95% UI)	
Global	59241939 (51208419, 63591584)	1537.7 (1330.7, 1647.5)	74432367 (68204127, 80193347)	926.1 (848.8, 997.7)	-39.8 (-44.9, -30.2)
High-income North America	2884661 (2668157, 3103137)	814.8 (752.3, 875.2)	5346347 (4812349, 5695195)	848.4 (765.9, 903)	4.1 (-5.7, 9.3)
Canada	179469 (165834, 192015)	546.7 (505.9, 585.3)	324035 (285829, 360471)	457.3 (404.8, 507.7)	-16.4 (-22.9, -8.6)
Greenland	507 (425, 571)	1699.8 (1403.2, 1915.9)	690 (563, 796)	1070.9 (864.5, 1235)	-37 (-46.7, -24)
United States of America	2704619 (2498892, 2918098)	843.5 (779, 907.6)	5021538 (4512795, 5344914)	896 (806.8, 954.5)	6.2 (-4, 11.4)
Australasia	173207 (161240, 184157)	731.7 (679.4, 778.3)	257802 (228535, 285031)	512.1 (455.1, 564.8)	-30 (-34.9, -24.6)
Australia	141977 (131208, 151583)	720.1 (665.4, 769.3)	211129 (186252, 235273)	497.1 (440.4, 553)	-31 (-36.6, -24.8)
New Zealand	31230 (28957, 33541)	789.5 (731.1, 848.8)	46673 (41621, 51152)	591.7 (528.5, 646.8)	-25.1 (-30.4, -19.6)
High-income Asia Pacific	651853 (594512, 705280)	342.5 (312.8, 370.1)	1071208 (912742, 1249683)	224.5 (193.6, 258.4)	-34.4 (-39.5, -25.6)
Brunei Darussalam	1175 (916, 1327)	1547.7 (1135.6, 1751.1)	1791 (1583, 2043)	842.8 (746.3, 941.8)	-45.5 (-53.3, -25.4)
Japan	509378 (462787, 553626)	315 (286, 341.8)	787117 (656931, 940623)	203.7 (173.7, 239.5)	-35.3 (-40.6, -26.1)
Singapore	18677 (16605, 20008)	943.1 (833.4, 1009.4)	18515 (16192, 21538)	247.4 (216.7, 288.3)	-73.8 (-76.6, -67)
Republic of Korea	122624 (106554, 135352)	479.9 (402.6, 535.8)	263784 (231186, 295758)	313.9 (275.2, 351.3)	-34.6 (-42.3, -19.1)
Western Europe	3314883 (3092068, 3539729)	569.7 (530.6, 608.8)	4306940 (3887584, 4666233)	460.8 (418.3, 499.6)	-19.1 (-22.8, -15.2)
Andorra	331 (271, 411)	644.7 (531.8, 792.8)	716 (595, 851)	505.4 (417.5, 600.2)	-21.6 (-39, -3.1)
Austria	45539 (41533, 50498)	385.9 (349.9, 427.3)	70373 (61776, 77955)	399.1 (351.6, 444.7)	3.4 (-9.1, 12.2)
Belgium	114475 (105812, 122577)	741 (684.6, 794.8)	142937 (127035, 155837)	621.9 (554.3, 680.4)	-16.1 (-22.5, -9.7)

Cyprus	5113 (4405 , 5861)	729 (626.4 , 827.1)	8761 (7550 , 10063)	477.9 (409.3 , 547.1)	-34.4 (-42.7 , -24.5)
Denmark	68826 (61968 , 73640)	853.4 (761.7 , 912.8)	90486 (75704 , 100150)	771.9 (648.1 , 852.9)	-9.6 (-17.5 , -2.5)
Finland	26189 (23707 , 28468)	370.6 (333.9 , 403.4)	37658 (33213 , 42289)	311 (273.5 , 348.9)	-16.1 (-23.1 , -8.8)
France	306519 (267873 , 341280)	359.7 (315.2 , 400.7)	323744 (279313 , 373113)	228.3 (198.1 , 262.9)	-36.5 (-44.2 , -27)
Germany	726416 (668759 , 796818)	575.7 (527.6 , 632.3)	973415 (871716 , 1074527)	519 (465.7 , 573.6)	-9.8 (-16.7 , -3.1)
Greece	61152 (54936 , 66433)	416.1 (372.7 , 452.3)	119485 (103967 , 132861)	466.4 (412.7 , 517.8)	12.1 (0.5 , 23.4)
Iceland	1490 (1343 , 1644)	515.5 (464.5 , 569.9)	2401 (2106 , 2665)	426.5 (374.9 , 471.8)	-17.3 (-24.4 , -9.9)
Ireland	43260 (38591 , 46107)	1038.6 (926.8 , 1109)	44786 (39741 , 49995)	589.3 (523.9 , 657)	-43.3 (-48.5 , -36.9)
Israel	23265 (21365 , 25210)	490.4 (449.8 , 531.5)	39412 (34992 , 45367)	339.4 (301.6 , 388.2)	-30.8 (-36.4 , -22.3)
Italy	427450 (395128 , 458757)	481.9 (444.1 , 517.4)	504846 (447328 , 553424)	325 (290.3 , 358.6)	-32.6 (-36.3 , -27.7)
Luxembourg	3386 (3097 , 3691)	623.5 (568.8 , 678.1)	4637 (4042 , 5262)	457.5 (397.8 , 520.6)	-26.6 (-34.1 , -18.2)
Malta	2019 (1831 , 2197)	481.2 (435.4 , 523.8)	2904 (2513 , 3293)	313.7 (272.1 , 354.2)	-34.8 (-42.7 , -26.6)
Monaco	299 (255 , 346)	419.7 (358.8 , 486)	371 (318 , 418)	383.1 (329.6 , 434.7)	-8.7 (-22.1 , 5.3)
Netherlands	143192 (132036 , 153054)	708.3 (652.8 , 758.3)	223466 (192796 , 249805)	645.8 (557.6 , 721.8)	-8.8 (-18.8 , 1)
Norway	27158 (24645 , 29651)	396.2 (358.5 , 433.6)	53398 (43501 , 58789)	548.6 (447.8 , 605.3)	38.5 (16.3 , 47.5)
Portugal	84498 (77184 , 92262)	634.1 (579.1 , 687.9)	109804 (97283 , 123301)	428.8 (381.1 , 483.7)	-32.4 (-38.5 , -25.6)
San Marino	127 (110 , 144)	387.3 (338.6 , 438.6)	229 (183 , 280)	349 (279.2 , 425)	-9.9 (-25.1 , 10)
Spain	373115 (345015 , 399010)	686.7 (633.2 , 735.6)	507703 (444859 , 567845)	482.6 (427.1 , 536.1)	-29.7 (-35.1 , -23.2)
Sweden	53208 (47467 , 59276)	358.5 (316.7 , 398.2)	90488 (77220 , 100835)	418.4 (359.1 , 467.8)	16.7 (1.6 , 25.8)
Switzerland	48929 (44614 , 52969)	469.1 (426.2 , 508.9)	60128 (53078 , 66472)	340 (300.6 , 377.5)	-27.5 (-33 , -21.7)

United Kingdom	726174 (679846, 776060)	788.5 (737.4, 842)	891037 (803053, 974746)	696.1 (628, 760)	-11.7 (-18.1, -5.6)
Southern Latin America	255646 (237577, 274552)	562.2 (521.3, 605.6)	453490 (409533, 500735)	544.8 (493, 601.2)	-3.1 (-11.2, 6.1)
Argentina	188334 (173709, 204094)	593.7 (547.3, 645.1)	333875 (299295, 371566)	619.8 (555.1, 690.2)	4.4 (-5.8, 15.7)
Chile	45427 (40525, 49197)	470.1 (418.8, 508.5)	83191 (72595, 96438)	352.1 (307.2, 406.9)	-25.1 (-33.9, -15.1)
Uruguay	21875 (19852, 24239)	566.6 (514.8, 628.1)	36401 (32598, 39873)	679.6 (608.7, 744.8)	19.9 (5.1, 33.8)
Eastern Europe	2124641 (1822434, 2267885)	775.3 (660.7, 828.2)	1270326 (1122357, 1498737)	381.5 (336.8, 448.4)	-50.8 (-56.3, -36.6)
Belarus	117825 (92876, 129772)	922.1 (722.7, 1015.4)	52243 (41990, 72527)	337.7 (272.8, 462)	-63.4 (-71.2, -40.4)
Estonia	6141 (5636, 6676)	305.4 (280.7, 331.8)	5579 (4641, 6728)	218.2 (180.8, 261.7)	-28.6 (-40.9, -14.8)
Latvia	13198 (12075, 14179)	376.2 (344, 404.1)	8147 (6812, 10151)	216.1 (180.2, 264.6)	-42.6 (-51.6, -29.6)
Lithuania	30676 (27035, 32827)	682.7 (601.3, 731.4)	15275 (12925, 18303)	276.1 (232.6, 328)	-59.6 (-66.2, -48.4)
Republic of Moldova	43435 (37419, 46461)	1001.9 (855.6, 1070.2)	21659 (18717, 25834)	383.1 (331.5, 455.2)	-61.8 (-67.2, -50.4)
Russian Federation	1182475 (1023412, 1268712)	666.5 (573.1, 715.1)	880444 (765845, 1008291)	386.6 (336.7, 442.2)	-42 (-49.2, -28.5)
Ukraine	730890 (615390, 789357)	1042.2 (875.3, 1126.8)	286978 (238049, 379419)	397.7 (331.4, 518.9)	-61.8 (-69, -44.8)
Central Europe	997895 (936556, 1045222)	692.4 (649.1, 725.4)	941462 (839379, 1046989)	452.8 (402.7, 504.1)	-34.6 (-40.7, -28.5)
Albania	14779 (11325, 16072)	772.5 (574.8, 841.5)	12594 (10071, 15613)	303.9 (244.9, 372.3)	-60.7 (-68.5, -42.3)
Bosnia and Herzegovina	26095 (23609, 28016)	692.5 (620.1, 740)	25407 (21206, 30002)	440 (370.6, 517)	-36.5 (-45.9, -25.2)
Bulgaria	83332 (75725, 89590)	704.5 (640, 756.7)	68587 (56919, 82904)	501.7 (416.7, 600.9)	-28.8 (-40.8, -14.4)
Croatia	26821 (24431, 29112)	431.5 (392.8, 468.2)	38369 (32134, 45055)	434.6 (366, 509.4)	0.7 (-14.2, 17.4)
Czechia	66585 (61623, 73825)	495.9 (458.6, 547.4)	90123 (76767, 104574)	443.3 (377.2, 513.7)	-10.6 (-23.8, 3.7)

Hungary	114284 (107113, 127245)	809.4 (758.8, 897.8)	136316 (117131, 156685)	746 (639.4, 860.1)	-7.8 (-22, 7.9)
Montenegro	1197 (1046, 1350)	200.7 (175, 226.3)	1827 (1560, 2070)	197.4 (169.6, 222.7)	-1.7 (-15.4, 11.1)
North Macedonia	11809 (10506, 12741)	674.8 (596.8, 728.5)	13682 (11244, 16812)	460.9 (382.2, 562.9)	-31.7 (-43.7, -13.4)
Poland	276260 (258942, 291867)	636.2 (595.6, 672.6)	262634 (228150, 300747)	384.1 (333.5, 438.9)	-39.6 (-46.3, -31.7)
Romania	272989 (235029, 292495)	1027.5 (875.8, 1098.5)	170192 (144041, 199898)	481.1 (406.9, 565.5)	-53.2 (-60.6, -40.2)
Serbia	68243 (61522, 76726)	625.3 (563.7, 708.1)	82442 (68968, 97327)	535.8 (449.4, 627.6)	-14.3 (-28.4, 0.7)
Slovakia	22061 (20061, 29619)	376.6 (343.4, 502)	27020 (22647, 32343)	306 (257.4, 365)	-18.7 (-33, -3.8)
Slovenia	13440 (10945, 16218)	556.7 (454.1, 671.6)	12268 (10240, 14729)	278.5 (233.2, 333.4)	-50 (-60.6, -37.6)
Central Asia	412933 (362876, 439217)	873.8 (765.3, 929.7)	450927 (408701, 509389)	662.8 (602.4, 747.8)	-24.1 (-32, -6.9)
Armenia	22950 (20143, 24705)	898.8 (774, 965.5)	23032 (19507, 26673)	572.3 (485.3, 660.2)	-36.3 (-45, -24.5)
Azerbaijan	37874 (34203, 41195)	730.3 (658.8, 799.4)	44064 (36883, 57745)	531.2 (437.9, 722)	-27.3 (-40.1, -0.6)
Georgia	19395 (16997, 24418)	334 (293.9, 424.4)	24689 (20728, 30835)	433.3 (365.4, 533)	29.7 (9.7, 51.1)
Kazakhstan	139190 (125012, 150335)	1098.1 (986.1, 1188.4)	190213 (162352, 222406)	1163.5 (996.2, 1355)	6 (-9.2, 23.9)
Kyrgyzstan	56771 (46653, 61764)	1861.8 (1518.1, 2029.8)	35383 (30648, 42816)	815 (711.2, 981.9)	-56.2 (-62.8, -39.8)
Mongolia	8736 (7119, 10397)	769.8 (635, 902.7)	9153 (7442, 11796)	411.3 (339.2, 516.7)	-46.6 (-58.4, -29.6)
Tajikistan	28280 (23882, 31431)	949.5 (806.6, 1070)	35185 (28959, 46360)	703.4 (571.3, 1012.8)	-25.9 (-41.1, 17.9)
Turkmenistan	16783 (13712, 18671)	846.8 (688.2, 939.2)	11888 (9520, 17910)	295.9 (236, 467.4)	-65.1 (-72.8, -37.7)
Uzbekistan	82954 (63412, 95637)	711.2 (543.7, 821.5)	77321 (64452, 98384)	407.3 (337.3, 580.8)	-42.7 (-55.6, -1.1)
Central Latin America	503240 (464527, 531934)	614.7 (567.3, 649.5)	1214743 (1059509, 1391028)	530 (461.5, 605.6)	-13.8 (-22.9, -3.1)
Colombia	119442 (104166, 128460)	707.8 (614.9, 760.4)	284836 (227823, 347276)	532.7 (425.1, 649.4)	-24.7 (-38.4, -8.8)

Costa Rica	7902 (7103 , 8674)	457 (409.1 , 500)	20162 (16364 , 24296)	398.3 (322.3 , 480.9)	-12.8 (-27.6 , 5.1)
El Salvador	13156 (11646 , 14640)	419.9 (369.6 , 469.7)	20881 (16632 , 25301)	336.9 (266.9 , 410)	-19.8 (-36.1 , -2.2)
Guatemala	18142 (15696 , 20966)	483 (425.4 , 552.3)	38203 (30919 , 47693)	348.7 (282.8 , 439.6)	-27.8 (-41.2 , -10.8)
Honduras	21157 (16868 , 25349)	864.4 (676.8 , 1022.9)	60866 (41210 , 77490)	1047.7 (689.5 , 1326.8)	21.2 (-8.4 , 58)
Mexico	274200 (251037 , 289744)	669.7 (610.7 , 707.1)	623207 (541012 , 715652)	559.7 (487.3 , 641)	-16.4 (-26.2 , -3.9)
Nicaragua	6010 (5405 , 6758)	390.5 (348.9 , 440.3)	21927 (17556 , 25173)	563.3 (445.2 , 643.4)	44.3 (8.6 , 68.4)
Panama	5710 (5168 , 6310)	376.6 (339.4 , 418.4)	12773 (10256 , 15500)	304.8 (244.1 , 370.6)	-19.1 (-33.5 , -2.5)
Venezuela (Bolivarian Republic of)	37521 (34211 , 41541)	383.1 (347.2 , 427.6)	131889 (104357 , 164405)	467.2 (370.4 , 578.6)	21.9 (-3.4 , 52.6)
Andean Latin America	96207 (80469 , 109755)	408.2 (351.6 , 457.4)	155790 (130465 , 184251)	281.9 (236.1 , 335.1)	-31 (-41.7 , -18.3)
Bolivia (Plurinational State of)	29249 (21598 , 36600)	820.1 (653 , 966.4)	47595 (37950 , 58962)	590.7 (472.2 , 724.9)	-28 (-42.4 , -10.5)
Ecuador	25112 (20699 , 27730)	443 (377.1 , 480.9)	46294 (37666 , 55603)	334.5 (273.5 , 403)	-24.5 (-37.2 , -7.2)
Peru	41846 (34009 , 50651)	289.8 (241.3 , 345.7)	61902 (49366 , 77238)	189.6 (150.9 , 238)	-34.6 (-49.5 , -14.7)
Caribbean	109006 (96930 , 122154)	411.3 (368.2 , 456.7)	237878 (205525 , 270360)	463.2 (400.1 , 527.7)	12.6 (-2.3 , 27.5)
Antigua and Barbuda	87 (78 , 98)	154.7 (138.3 , 173.9)	170 (143 , 199)	178.2 (150.5 , 207.5)	15.2 (-2.6 , 34.8)
Barbados	467 (413 , 524)	154.4 (136.5 , 173.5)	844 (707 , 985)	177.7 (150.5 , 206.9)	15.1 (-2.3 , 34.5)
Belize	336 (294 , 380)	338.5 (294.3 , 384.6)	1276 (1106 , 1472)	457.5 (394.6 , 530.4)	35.1 (12.3 , 65.3)
Bermuda	152 (133 , 173)	249.3 (217.4 , 283.4)	245 (204 , 295)	194.1 (163.1 , 231.4)	-22.1 (-34.1 , -7.5)
Bahamas	364 (321 , 410)	230.5 (202.5 , 259.3)	854 (713 , 1020)	225.6 (188.5 , 268.2)	-2.1 (-19.4 , 18.9)

Cuba	36958 (33793 , 39871)	359 (327.7 , 387.7)	93410 (74346 , 111373)	497.6 (397.4 , 591.6)	38.6 (13.2 , 63.6)
Dominica	224 (198 , 262)	304.2 (269.6 , 356.2)	305 (248 , 365)	340.9 (277.6 , 408.5)	12.1 (-15.9 , 39.1)
Dominican Republic	10126 (8858 , 11700)	255.4 (223.5 , 297.8)	31322 (24266 , 39293)	337.6 (262.9 , 423.9)	32.2 (1.3 , 71.8)
Grenada	244 (216 , 277)	325.9 (288.1 , 370.6)	355 (312 , 404)	326.6 (287.8 , 371.8)	0.2 (-15.2 , 16.6)
Guyana	1189 (1016 , 1381)	312.3 (268.4 , 359.8)	2085 (1649 , 2539)	336.6 (268.7 , 405.8)	7.8 (-15 , 35.7)
Haiti	29691 (19262 , 40919)	867.3 (558.6 , 1186.9)	52104 (34340 , 70789)	754.5 (500.5 , 1035.9)	-13 (-31.6 , 13.5)
Jamaica	5934 (5382 , 6597)	322.6 (291.8 , 359.4)	11641 (9288 , 14267)	390.2 (311.5 , 478.4)	20.9 (-2.3 , 50.2)
Puerto Rico	15037 (13685 , 16317)	419.3 (380.3 , 455.8)	26948 (22083 , 32776)	375.7 (305.8 , 455.2)	-10.4 (-25.7 , 8.1)
Saint Kitts and Nevis	132 (118 , 149)	349.9 (312.9 , 395.1)	219 (186 , 258)	350.8 (302.3 , 407.4)	0.3 (-14.5 , 17.6)
Saint Lucia	426 (386 , 474)	483.9 (437.7 , 537.2)	981 (819 , 1144)	465.5 (389.4 , 541.9)	-3.8 (-19.7 , 14.1)
Saint Vincent and the Grenadines	138 (122 , 157)	186.5 (165.3 , 212.1)	316 (270 , 363)	241.4 (206.7 , 276.7)	29.5 (7.4 , 52.7)
Suriname	955 (856 , 1074)	369.1 (329.5 , 413.2)	2014 (1705 , 2363)	343.8 (291.8 , 402.7)	-6.8 (-20.6 , 10.3)
Trinidad and Tobago	2713 (2493 , 2941)	318 (292.4 , 344.2)	4268 (3268 , 5472)	239.2 (183.7 , 303.9)	-24.8 (-41.9 , -4.2)
United States Virgin Islands	201 (172 , 236)	249.1 (213.3 , 295.3)	463 (385 , 533)	259.1 (216.7 , 295.7)	4 (-15.9 , 24.1)
Tropical Latin America	839562 (783787 , 887661)	961.5 (893.4 , 1016.5)	1454619 (1339057 , 1596900)	613.2 (563.9 , 674)	-36.2 (-39.9 , -30.6)
Brazil	831746 (775724 , 880031)	978.8 (907.4 , 1035.1)	1434009 (1320385 , 1576595)	618.7 (568.6 , 681.2)	-36.8 (-40.4 , -31.2)
Paraguay	7817 (6896 , 9421)	332.8 (291.3 , 421.1)	20610 (16499 , 25744)	376.1 (299.1 , 469.9)	13 (-13 , 42.6)
East Asia	26611959 (19952797 , 29859633)	3541.2 (2661.5 , 3946.4)	20687032 (18186559 , 24532635)	1100 (964.1 , 1299.4)	-68.9 (-73.8 , -54.3)
China	26118525 (19585434 , 29356350)	3611.8 (2711 , 4026.5)	19922948 (17355633 , 23704974)	1102.8 (962.9 , 1309)	-69.5 (-74.3 , -54.9)

Democratic People's Republic of Korea	412939 (306714 , 519472)	3003.3 (2262.9 , 3799.1)	622217 (508284 , 726186)	2030.9 (1665.4 , 2365.8)	-32.4 (-47.4 , -12.7)
Taiwan (Province of China)	80496 (73443 , 86484)	581.1 (524.6 , 623.1)	141867 (118372 , 174849)	365 (306 , 448.9)	-37.2 (-47.9 , -20.2)
Southeast Asia	3105217 (2579765 , 3419385)	1252.5 (1025.5 , 1380.6)	5135252 (4483301 , 5641295)	895.6 (785 , 981.4)	-28.5 (-36.6 , -17.7)
Cambodia	44503 (37839 , 51295)	1001.4 (840.3 , 1155.7)	94588 (78433 , 109751)	851.3 (706.7 , 979.3)	-15 (-29.7 , 5.2)
Indonesia	1143698 (990321 , 1273612)	1210.9 (1051.6 , 1348.6)	1987915 (1691657 , 2259347)	998.2 (852.7 , 1123.3)	-17.6 (-30.5 , -2.8)
Lao People's Democratic Republic	37463 (29056 , 46312)	1781.2 (1393.3 , 2173.2)	50347 (41619 , 60639)	1203.8 (1004.1 , 1444.9)	-32.4 (-46.2 , -15.9)
Malaysia	86576 (74279 , 98707)	1007.8 (863.9 , 1158.5)	168843 (142131 , 205648)	670.3 (566.1 , 815.4)	-33.5 (-47.9 , -10.6)
Maldives	2124 (1595 , 2644)	2303.8 (1802.4 , 2726.9)	2596 (2260 , 2943)	897.6 (780.7 , 1022.2)	-61 (-68.2 , -49.7)
Mauritius	5308 (4780 , 5721)	738.9 (663.7 , 796.8)	8127 (6894 , 9730)	499.8 (425.6 , 596.3)	-32.4 (-42.2 , -16.7)
Myanmar	554127 (431812 , 682396)	2481.8 (1924.3 , 3012.8)	762174 (613913 , 876044)	1784.4 (1428.4 , 2039.8)	-28.1 (-41.2 , -11.6)
Philippines	306137 (271272 , 345370)	1058.5 (939.1 , 1198.7)	680613 (587464 , 788321)	893 (766.3 , 1039.3)	-15.6 (-30.9 , 2.5)
Sri Lanka	78648 (68255 , 87904)	730.8 (628.4 , 821.1)	144962 (113982 , 178176)	601.9 (476.5 , 738.7)	-17.6 (-36 , 4.7)
Seychelles	441 (369 , 494)	767.5 (642.8 , 857.5)	664 (572 , 754)	632.8 (546.3 , 713.6)	-17.5 (-26 , -6.7)
Thailand	438987 (380175 , 493817)	1246.2 (1063.5 , 1408.6)	509714 (419824 , 614928)	524.6 (434.2 , 631.8)	-57.9 (-66.3 , -46.2)
Timor-Leste	3658 (2832 , 4668)	1281.1 (989.6 , 1633.8)	9152 (7249 , 11329)	1175.4 (941.1 , 1450.2)	-8.2 (-28.2 , 15.6)
Viet Nam	399420 (199002 , 490240)	1021.7 (495.8 , 1246.6)	708830 (396458 , 852726)	826.1 (451.5 , 990.9)	-19.2 (-35.9 , 5.3)
Oceania	79030 (66152 , 95202)	2648.5 (2189.2 , 3169)	158295 (125658 , 199295)	2309.9 (1847.5 , 2874.6)	-12.8 (-28.9 , 6.5)
American Samoa	313 (270 , 355)	1391.2 (1206.7 , 1565.8)	396 (336 , 478)	877.5 (751.9 , 1060.5)	-36.9 (-48.8 , -20.4)
Cook Islands	157 (133 , 176)	1257.5 (1065.8 , 1414.4)	169 (146 , 192)	713.5 (616.6 , 808.4)	-43.3 (-50.7 , -34.2)

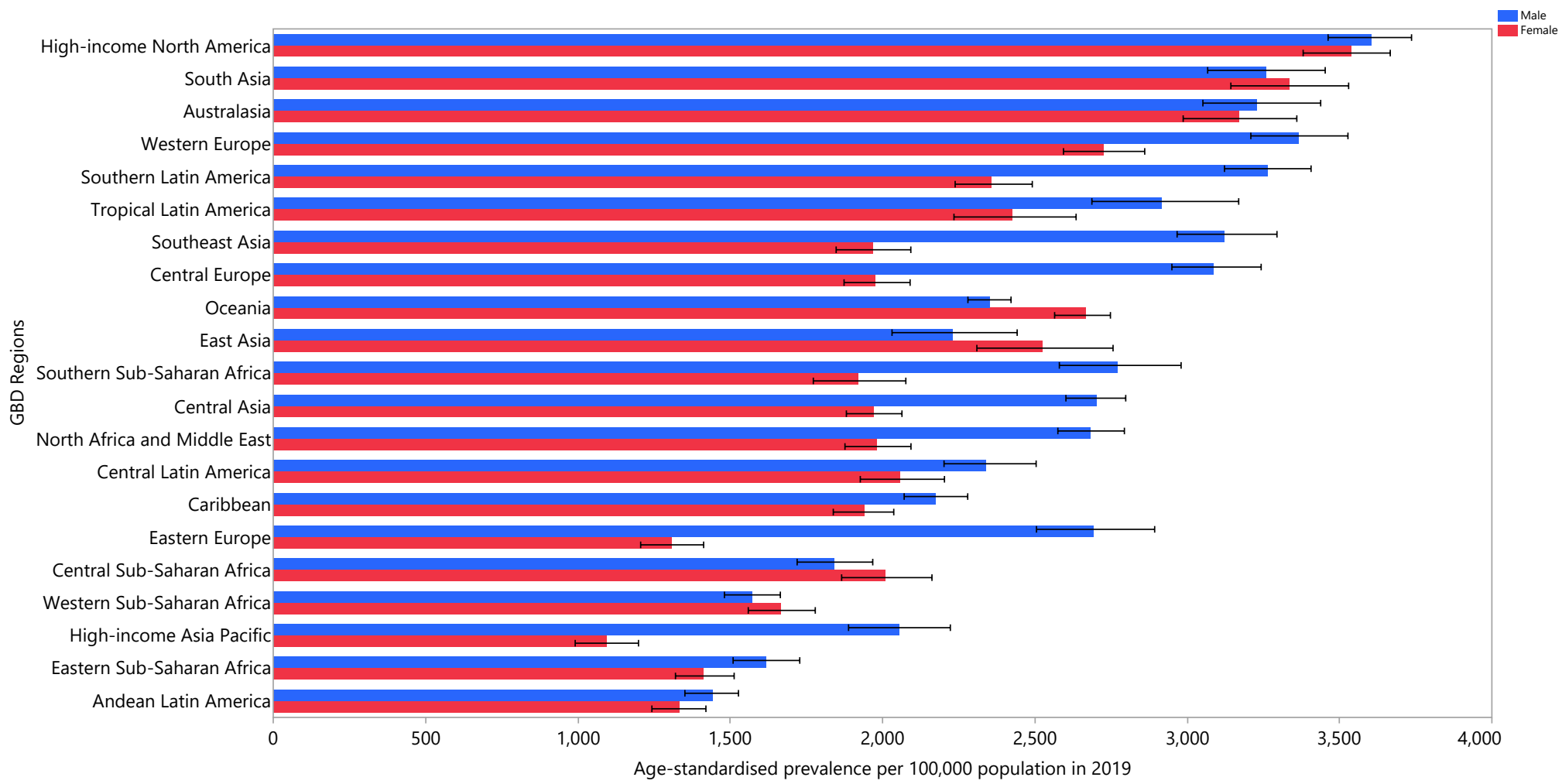
Micronesia (Federated States of)	1222 (972 , 1505)	2443.1 (1947 , 2998.2)	1087 (786 , 1402)	1587 (1200.2 , 2006.8)	-35 (-53.4 , -13.1)
Fiji	3263 (2579 , 4208)	908.5 (728.4 , 1168)	3830 (3006 , 4918)	552.5 (438.5 , 693.8)	-39.2 (-58.6 , -15.2)
Guam	576 (513 , 644)	839.4 (745.4 , 936.4)	859 (726 , 1029)	464.1 (392.4 , 554.9)	-44.7 (-54 , -34.3)
Kiribati	628 (503 , 759)	1597.5 (1293.1 , 1898.5)	817 (633 , 1023)	1198.7 (938.9 , 1474.3)	-25 (-43.2 , -4.1)
Marshall Islands	399 (321 , 536)	2214.4 (1761.1 , 2985.7)	519 (388 , 682)	1512.2 (1150.8 , 1968.4)	-31.7 (-50.1 , -13.6)
Nauru	100 (73 , 127)	2372.3 (1793.1 , 2925.8)	74 (56 , 92)	1645 (1301.6 , 1972.1)	-30.7 (-44.2 , -12.3)
Niue	35 (29 , 42)	1573.1 (1295.8 , 1878.9)	22 (18 , 27)	1068.4 (871.2 , 1272.9)	-32.1 (-44.6 , -18.4)
Northern Mariana Islands	243 (199 , 292)	1282.3 (1099.4 , 1484)	338 (291 , 402)	756.1 (658.3 , 887.9)	-41 (-50.8 , -25.4)
Palau	199 (162 , 248)	2075.2 (1693.6 , 2580.4)	285 (236 , 344)	1500.4 (1252.8 , 1786.4)	-27.7 (-45.9 , -9.1)
Papua New Guinea	59782 (48790 , 73478)	3272.5 (2624.2 , 3944.9)	130156 (100852 , 167224)	2902.7 (2264.5 , 3716)	-11.3 (-29.1 , 9.6)
Samoa	1688 (1346 , 2216)	1907.5 (1538.5 , 2487.9)	1655 (1322 , 2073)	1160.1 (942.9 , 1437)	-39.2 (-54 , -20.8)
Solomon Islands	3656 (2742 , 4999)	2538.7 (1931.8 , 3526.6)	6805 (5286 , 8556)	2178.6 (1719.5 , 2655.8)	-14.2 (-33.7 , 9.8)
Tokelau	26 (21 , 32)	1901.4 (1574.8 , 2354.4)	14 (12 , 17)	1111.8 (908.8 , 1335.4)	-41.5 (-53.6 , -27.6)
Tonga	591 (496 , 695)	1112.8 (938.7 , 1302.2)	619 (507 , 746)	787.2 (646.2 , 944.4)	-29.3 (-44.2 , -8.4)
Tuvalu	177 (144 , 217)	2549.7 (2084.5 , 3136.8)	140 (112 , 176)	1409.9 (1140.9 , 1772.1)	-44.7 (-57.9 , -27.7)
Vanuatu	1603 (1153 , 2187)	2338.8 (1689.7 , 3174.8)	3033 (2297 , 3999)	1735.4 (1326.7 , 2253.6)	-25.8 (-43.6 , -2)
North Africa and Middle East	1315162 (1164472 , 1461299)	736.1 (648.7 , 818.5)	2761836 (2436839 , 3062623)	649.1 (574.6 , 717.7)	-11.8 (-21.1 , -0.9)
Afghanistan	82231 (55748 , 107273)	1122.4 (745.1 , 1458.8)	137887 (100493 , 173594)	964.5 (681.8 , 1203.2)	-14.1 (-32.8 , 7.4)
Algeria	68470 (56013 , 82527)	579.1 (472.6 , 697.4)	148252 (124597 , 175872)	465.1 (390.8 , 548)	-19.7 (-34 , -1.9)

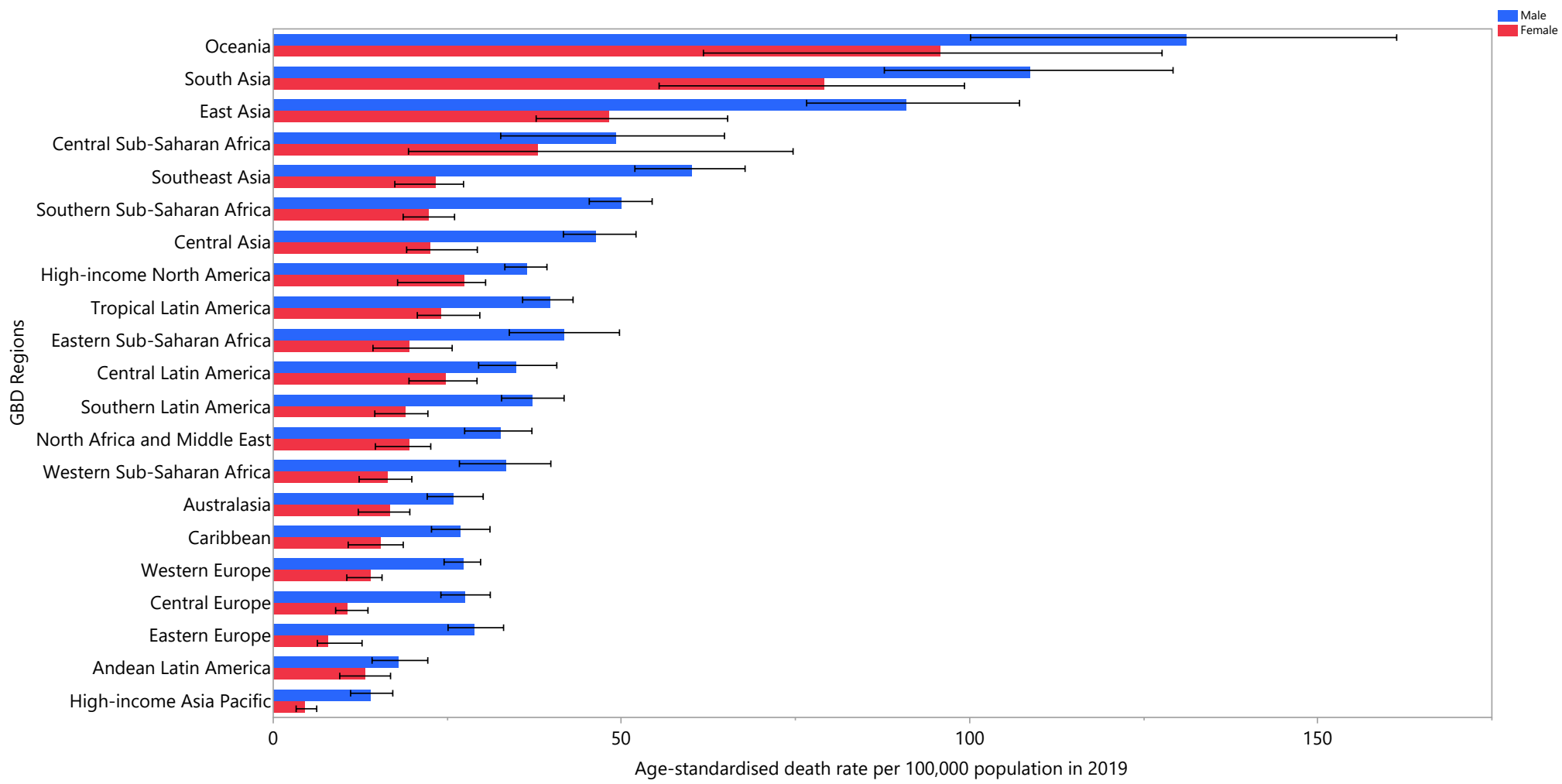
Bahrain	1707 (1503 , 1914)	1147.5 (996.2 , 1291)	4014 (3426 , 4797)	561.7 (484.6 , 662.1)	-51.1 (-59 , -39.5)
Egypt	230577 (184415 , 266825)	717.6 (560.9 , 836.7)	499452 (378041 , 615259)	776.4 (583.1 , 954.9)	8.2 (-12.2 , 34.3)
Iran (Islamic Republic of)	153371 (138121 , 176277)	555.9 (495 , 646.6)	372569 (338458 , 404911)	517.2 (471 , 560.8)	-7 (-20.6 , 3.2)
Iraq	29997 (25199 , 35564)	345.2 (289.3 , 412.9)	65299 (54269 , 76574)	265.2 (221.3 , 311.2)	-23.2 (-40.1 , -7)
Jordan	8223 (6955 , 9496)	597.2 (502.3 , 693.8)	22410 (19437 , 25914)	341.2 (297.1 , 392.9)	-42.9 (-53.4 , -30.7)
Kuwait	1850 (1594 , 2098)	245.1 (214.3 , 272.8)	6186 (5236 , 7195)	215.7 (185.7 , 249.7)	-12 (-23.7 , 1.9)
Lebanon	11965 (10017 , 14161)	541.9 (453.3 , 639.5)	27283 (22613 , 31817)	525.6 (436.8 , 612.6)	-3 (-18.7 , 13.8)
Libya	9586 (7969 , 11266)	467.4 (383.1 , 557.4)	28042 (23234 , 33105)	531.5 (440.8 , 630.6)	13.7 (-9.4 , 38.6)
Morocco	72430 (58330 , 87827)	509.3 (406.7 , 627.4)	172958 (141768 , 203952)	577.5 (476.2 , 680.6)	13.4 (-7 , 39)
Palestine	5537 (4473 , 7193)	605.1 (485.7 , 801.5)	9932 (8572 , 11625)	414.3 (359.2 , 492.5)	-31.5 (-52.4 , -14)
Oman	4386 (3429 , 5769)	673.8 (517.4 , 879.1)	7193 (6122 , 8214)	453.9 (363.5 , 514.4)	-32.6 (-50.4 , -12.1)
Qatar	774 (659 , 922)	593.7 (502.9 , 768.5)	3730 (3055 , 4557)	410.9 (345.6 , 522.7)	-30.8 (-45.7 , -15.2)
Saudi Arabia	39029 (30653 , 52588)	680.1 (532.6 , 941)	91982 (77925 , 107172)	508.2 (434.9 , 581.6)	-25.3 (-47.4 , -4.4)
Sudan	90846 (58643 , 130472)	849.2 (551.7 , 1164)	137492 (102426 , 179883)	682.3 (500.3 , 897.6)	-19.7 (-36.9 , 4)
Syrian Arab Republic	33833 (27944 , 40202)	562.7 (456.7 , 705.2)	64521 (52675 , 80806)	546.8 (448 , 686.7)	-2.8 (-23.5 , 25.1)
Tunisia	22554 (19137 , 27793)	453.2 (382.3 , 563.1)	54631 (44085 , 67863)	454.7 (367.8 , 563)	0.3 (-19.1 , 23.8)
Turkey	389298 (338506 , 434352)	1099 (953.2 , 1230.2)	733647 (575036 , 858889)	855.2 (667.5 , 1000.4)	-22.2 (-36.7 , -6.1)
United Arab Emirates	7028 (4614 , 9077)	1001.4 (738.8 , 1279.3)	59161 (39649 , 78876)	886.1 (698.8 , 1101.3)	-11.5 (-35.9 , 19.3)
Yemen	50586 (35978 , 68098)	919.1 (641.4 , 1247.8)	112389 (90488 , 140804)	785.1 (634.1 , 976)	-14.6 (-36.3 , 14.5)

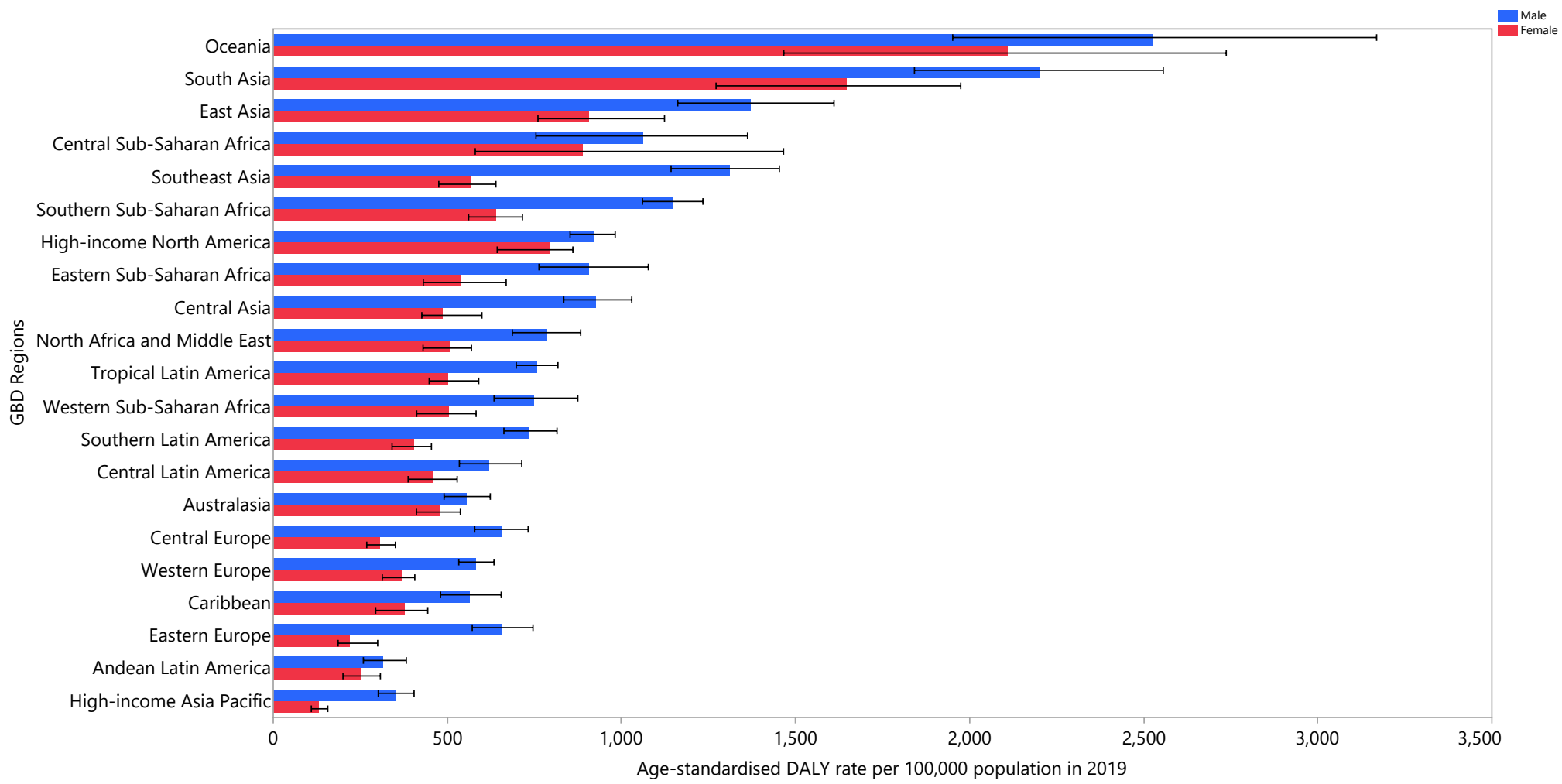
South Asia	13754543 (11735759, 15663386)	2717.5 (2304.6, 3087.8)	25068288 (21179021, 28364363)	1915.9 (1617, 2171.7)	-29.5 (-39.9, -18.8)
Bangladesh	1103052 (906138, 1402845)	2404.4 (1954.8, 3144.6)	1446698 (1165734, 2142116)	1144.2 (921.6, 1732.7)	-52.4 (-61.4, -41.2)
Bhutan	5824 (4368, 7511)	2568.8 (1927.6, 3318)	10178 (8024, 13379)	1952.5 (1540.2, 2564.5)	-24 (-39.6, -1.6)
India	11200912 (9494539, 12757312)	2881.6 (2440, 3292.2)	21230554 (17441993, 24388925)	2000.6 (1644.1, 2301.8)	-30.6 (-41.5, -19.5)
Nepal	335639 (241715, 409560)	3931 (2817.2, 4759.3)	675303 (519278, 799155)	3318.4 (2546.5, 3889.6)	-15.6 (-33.9, 4.6)
Pakistan	1109116 (886952, 1380747)	2013.3 (1591.4, 2533.2)	1705556 (1428513, 2046702)	1682.7 (1409.7, 2024.9)	-16.4 (-33.7, 2)
Southern Sub-Saharan Africa	282777 (250450, 328101)	1001.8 (885.9, 1170.2)	464451 (427686, 502682)	838.6 (772.6, 907.8)	-16.3 (-27.4, -6.6)
Botswana	7422 (5567, 10502)	1304.8 (969.7, 1854.4)	13356 (10115, 16596)	997.8 (761.3, 1235.7)	-23.5 (-42.1, -1.8)
Lesotho	16362 (12103, 22410)	1676.6 (1234.8, 2265.9)	20889 (15992, 27111)	1676.7 (1289.2, 2156)	0 (-28.4, 28.5)
Namibia	10306 (7761, 13254)	1419.1 (1076.4, 1845.6)	14596 (11774, 17719)	1054.8 (845.9, 1283.7)	-25.7 (-39.8, -6.3)
South Africa	215656 (193734, 246068)	999.1 (892, 1151.2)	361520 (330346, 393541)	825.5 (758.6, 898.1)	-17.4 (-25.9, -7.7)
Eswatini	4180 (3264, 5483)	1403.7 (1085.8, 1866.4)	6411 (5181, 7935)	1092.7 (881.9, 1347.7)	-22.2 (-41.6, 0)
Zimbabwe	28850 (24994, 33054)	690.1 (590.6, 792.9)	47680 (38959, 56099)	664.1 (531.9, 787.4)	-3.8 (-31, 16.8)
Western Sub-Saharan Africa	684909 (590018, 794427)	737.1 (633.9, 857.4)	1256880 (1101974, 1409706)	619 (542.8, 692.7)	-16 (-29, -5.6)
Benin	19631 (16407, 23274)	909.7 (761.9, 1075.4)	37517 (31435, 45489)	692.6 (581.3, 841.6)	-23.9 (-37.9, -5.2)
Burkina Faso	27063 (22310, 32247)	571.4 (475.2, 682.6)	55148 (46638, 65580)	523.9 (448.2, 609.8)	-8.3 (-24.6, 9.8)
Cameroon	43436 (35987, 50519)	939.6 (775.7, 1094.3)	93436 (73645, 113581)	713.9 (564.3, 865.5)	-24 (-38, -5.8)
Cabo Verde	2030 (1510, 2279)	849.9 (634.9, 954.5)	2127 (1848, 2566)	482.1 (416.7, 585.9)	-43.3 (-52.1, -9.7)
Chad	26112 (21082, 34577)	865.7 (696.2, 1167)	47902 (39157, 58698)	766.1 (616.5, 947.4)	-11.5 (-30.9, 10.3)

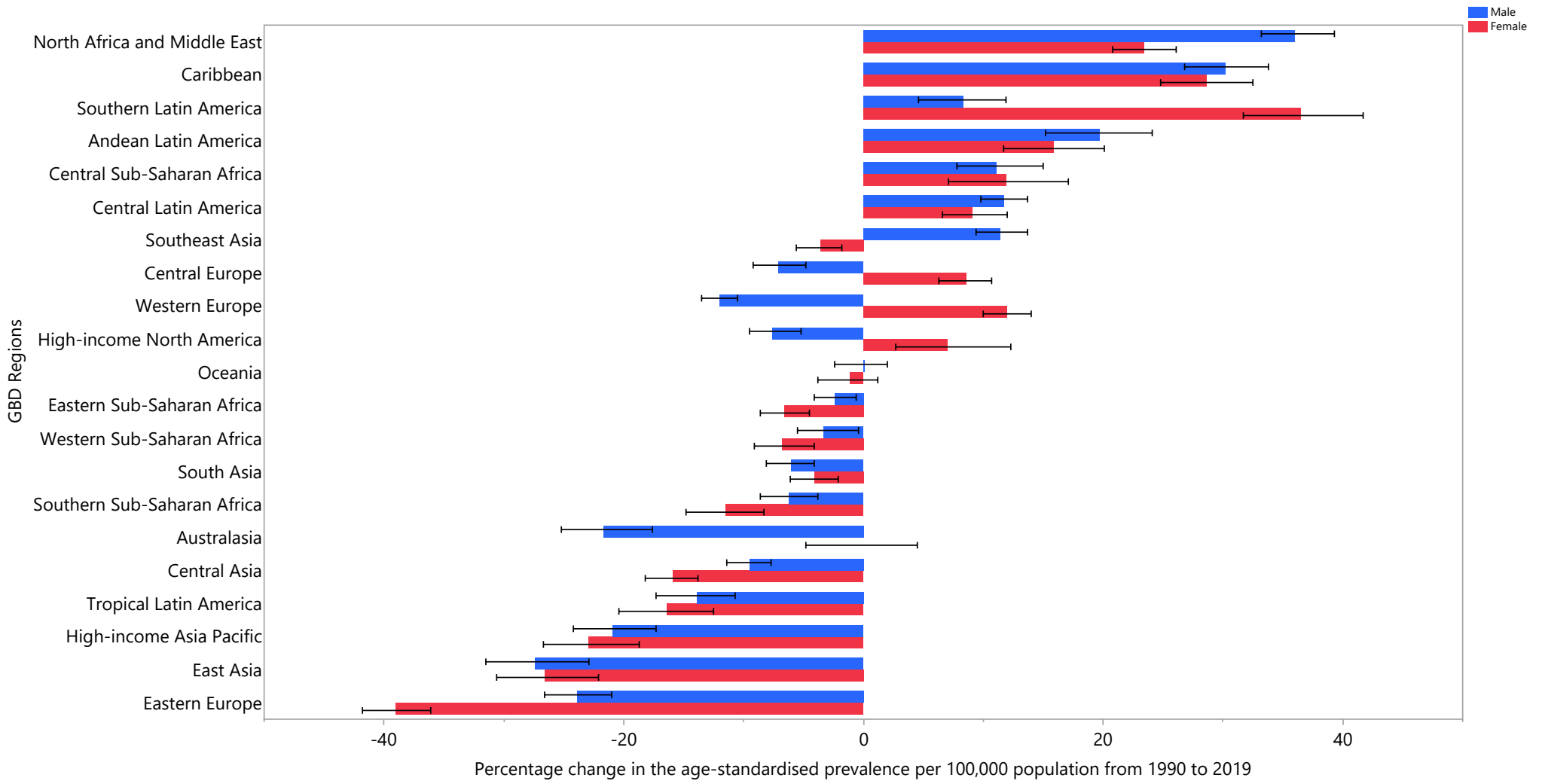
Côte d'Ivoire	38907 (31503, 47028)	891.8 (721.8, 1059.1)	75749 (62556, 91224)	647.1 (536.9, 778.8)	-27.4 (-42.6, -8.8)
Gambia	3253 (2562, 4168)	844.5 (670.3, 1079.5)	8039 (6571, 9807)	779.1 (637.9, 943.6)	-7.7 (-30.4, 18.3)
Ghana	46511 (33864, 55553)	687.2 (487.1, 831.6)	115490 (83960, 136317)	670 (473.3, 793)	-2.5 (-27.8, 21.2)
Guinea	30595 (25173, 37957)	879.7 (723.8, 1096.8)	48426 (39829, 58650)	810.1 (660.5, 977.1)	-7.9 (-27.7, 16.2)
Guinea-Bissau	5465 (4418, 6665)	1243.1 (999, 1512.8)	7369 (5932, 9016)	911.2 (727.6, 1115.3)	-26.7 (-43.3, -7.8)
Liberia	6735 (5564, 8267)	553.2 (466.5, 658)	11591 (9538, 14466)	503.5 (408.8, 634.7)	-9 (-25.4, 11.7)
Mali	45556 (35933, 55029)	1030.9 (820.3, 1234.8)	88731 (70285, 109098)	942.2 (750, 1149.8)	-8.6 (-25.3, 12.6)
Mauritania	8295 (6512, 9752)	784.7 (610.7, 927.1)	11199 (9319, 13247)	513.4 (428.1, 607.6)	-34.6 (-46.6, -18.3)
Niger	28841 (22698, 38930)	910.2 (721.2, 1224)	64941 (51345, 84879)	751.5 (594, 991.4)	-17.4 (-33.4, 3.1)
Nigeria	293612 (246938, 352950)	639.9 (532.2, 768.4)	479461 (397882, 566250)	523 (430.7, 623.3)	-18.3 (-33.9, 0.1)
Sao Tome and Principe	854 (701, 992)	1312.6 (1091.5, 1518.3)	1461 (1187, 1713)	1408.8 (1148.7, 1656.6)	7.3 (-14.4, 29.9)
Senegal	29029 (23666, 35510)	845.7 (688.2, 1040.3)	51815 (43596, 61521)	657.4 (549.4, 779)	-22.3 (-36.2, -3.2)
Sierra Leone	17000 (13680, 20613)	841.1 (678.8, 1012.4)	28363 (22972, 35037)	716 (578, 878.7)	-14.9 (-30.5, 7.5)
Togo	11962 (9979, 14002)	870.6 (721.5, 1014.7)	28098 (23026, 34501)	713.4 (583.9, 876.2)	-18.1 (-35, 1.3)
Eastern Sub-Saharan Africa	783557 (666616, 956135)	955.2 (810.5, 1150.2)	1233648 (1081820, 1417063)	707.5 (622.5, 801.7)	-25.9 (-33.2, -18.4)
Burundi	36935 (28047, 46061)	1419.1 (1108, 1755.1)	47998 (37842, 61419)	996.4 (797, 1258.5)	-29.8 (-44.8, -8.3)
Comoros	2042 (1387, 2632)	880.8 (619.7, 1131)	3098 (2568, 3777)	631.4 (521.1, 768.9)	-28.3 (-43, 1.2)
Djibouti	1140 (852, 1599)	703.6 (507.8, 920.9)	3402 (2634, 4475)	549 (409.1, 721.3)	-22 (-38, -0.9)
Eritrea	12239 (9019, 15739)	1058.9 (784.7, 1338.3)	24248 (19456, 29408)	840.6 (651.8, 1021.5)	-20.6 (-38.2, 5)

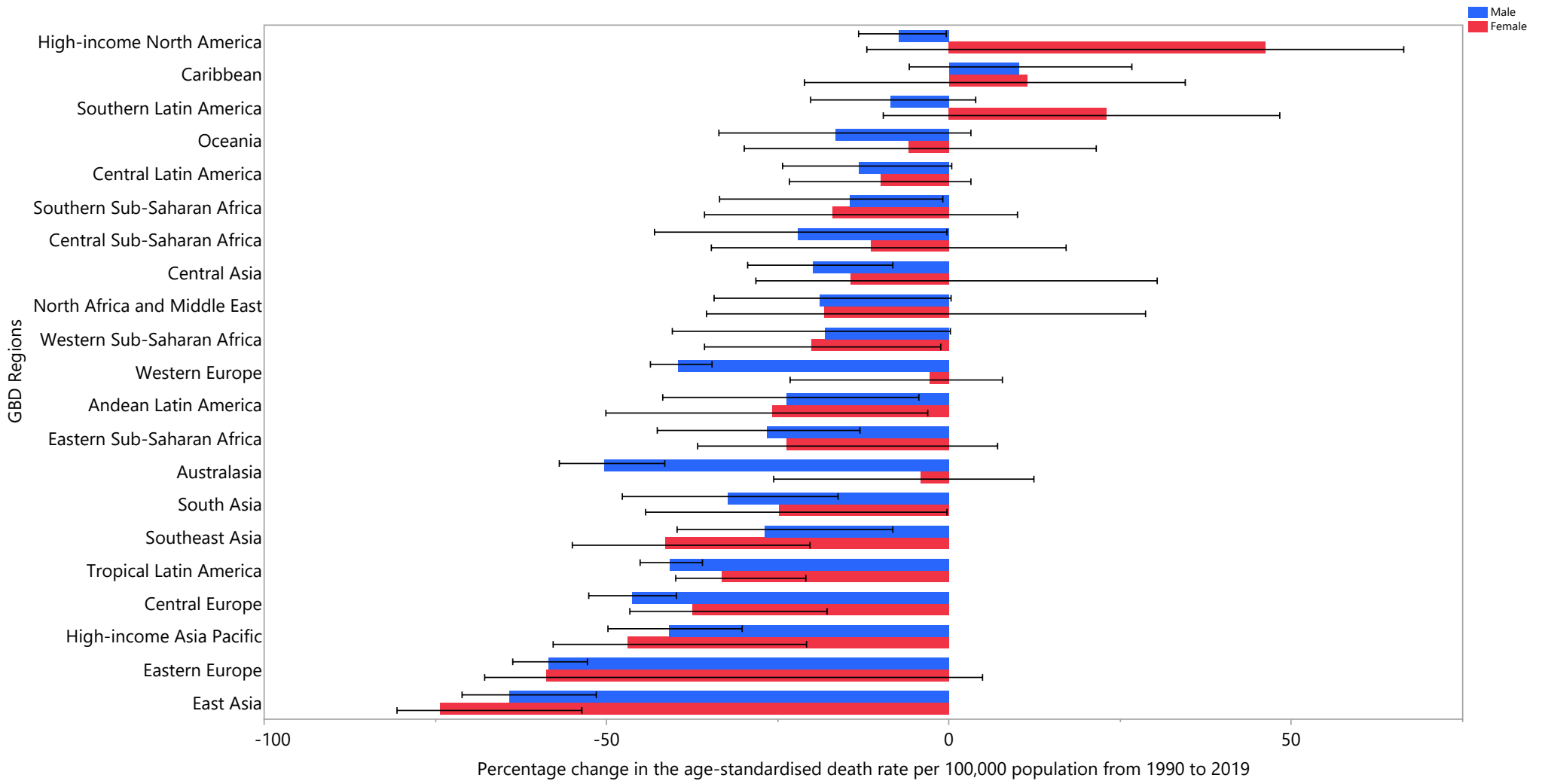
Ethiopia	249815 (205094 , 299132)	1139.5 (936.2 , 1350.5)	276051 (235783 , 319003)	629.1 (524.5 , 724.2)	-44.8 (-53.2 , -34.3)
Kenya	68658 (55950 , 95972)	776.8 (626.1 , 1132)	172424 (143232 , 211306)	752.8 (625.2 , 933.3)	-3.1 (-21.7 , 10.7)
Madagascar	65102 (55330 , 78709)	1120.1 (970.1 , 1304.2)	119475 (95573 , 147713)	1039.4 (817.8 , 1299.5)	-7.2 (-27.1 , 14.7)
Malawi	31644 (26492 , 39357)	743.1 (619 , 902.2)	49926 (42580 , 58025)	630.2 (535.4 , 730.8)	-15.2 (-29.4 , 1.2)
Mozambique	41161 (33562 , 52867)	636.2 (496 , 809)	79251 (65153 , 95983)	658.9 (534 , 804.1)	3.6 (-19.9 , 29)
Rwanda	46528 (35271 , 57464)	1453.4 (1129.8 , 1769.4)	52643 (43660 , 64294)	849.7 (703.7 , 1037.8)	-41.5 (-52.8 , -23.1)
Somalia	33380 (24450 , 51628)	1213.6 (893.9 , 1856.5)	69971 (48897 , 107425)	957.1 (669 , 1413.3)	-21.1 (-37.8 , 1.5)
South Sudan	22714 (16046 , 30122)	857.9 (625.6 , 1116.1)	25802 (20171 , 32891)	643.9 (492.8 , 821)	-24.9 (-40.4 , -4.9)
United Republic of Tanzania	75804 (64691 , 91836)	634.6 (530.2 , 749.1)	145131 (124452 , 168085)	541.2 (461.3 , 624.9)	-14.7 (-28.3 , 0.8)
Uganda	69165 (51588 , 99202)	983.8 (732.4 , 1452.9)	111246 (88850 , 137926)	726.6 (576.7 , 899.5)	-26.1 (-44.8 , -7.8)
Zambia	26655 (22401 , 32721)	844.5 (691.6 , 1026.7)	51995 (43565 , 60762)	720 (599.7 , 842.3)	-14.7 (-32.4 , 4.2)
Central Sub-Saharan Africa	261049 (203772 , 331860)	1142.2 (888.2 , 1471.6)	505152 (395965 , 652963)	964.5 (743.7 , 1321.3)	-15.6 (-30.2 , 1.4)
Angola	44820 (35172 , 57766)	1094.2 (863 , 1392.6)	82532 (68281 , 97993)	729.3 (596.8 , 874.1)	-33.3 (-46.3 , -15.9)
Central African Republic	16801 (12747 , 22281)	1419.6 (1055.9 , 1931.9)	26883 (19794 , 35677)	1233.7 (901.7 , 1651.8)	-13.1 (-31.6 , 8.7)
Congo	13270 (10213 , 16935)	1242.5 (945.8 , 1588.9)	21129 (16849 , 25517)	832 (668.1 , 997.7)	-33 (-47.3 , -18)
Democratic Republic of the Congo	178728 (133611 , 233225)	1138.2 (849.2 , 1502.2)	364725 (270262 , 492832)	1042.1 (757.7 , 1493.2)	-8.4 (-27.9 , 13.2)
Equatorial Guinea	2388 (1752 , 3170)	1194.8 (867.9 , 1621.9)	3457 (2671 , 4636)	699.5 (522.3 , 993.7)	-41.5 (-58.1 , -19.6)
Gabon	5041 (3807 , 6054)	906.7 (684.3 , 1088.1)	6425 (5079 , 7848)	623.8 (487.8 , 758.4)	-31.2 (-47.5 , -15)

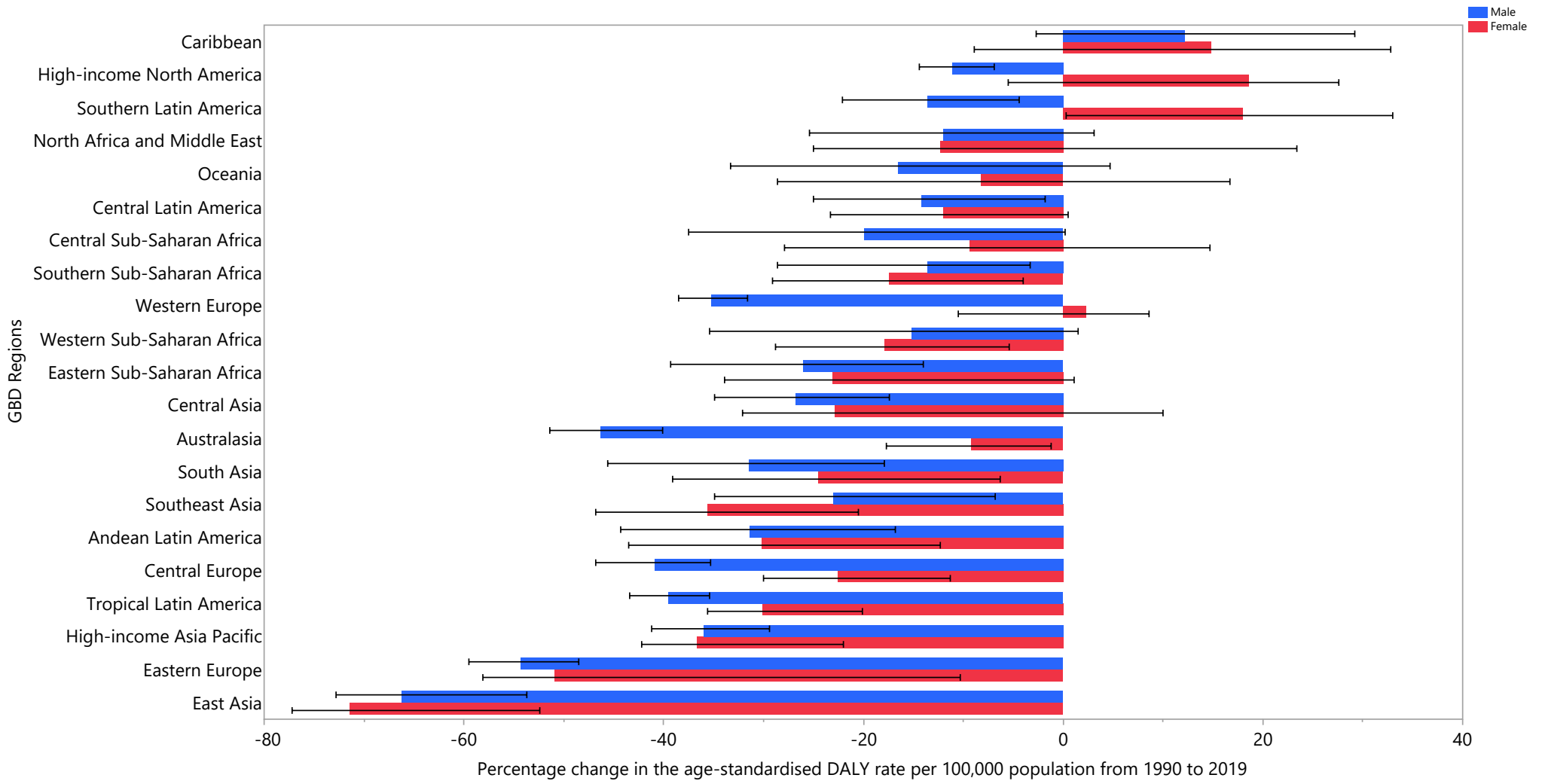


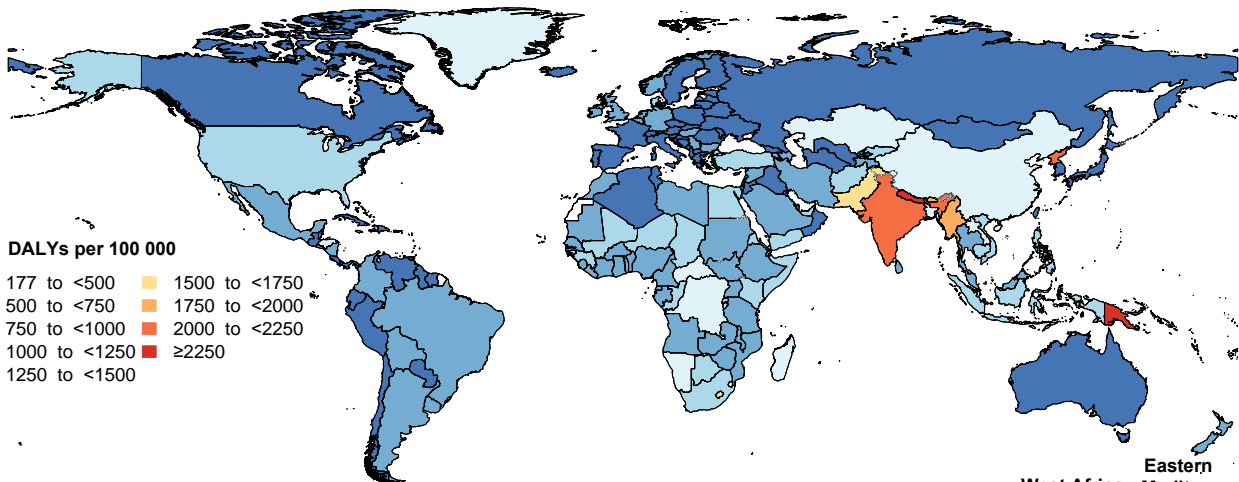












Caribbean and Central America



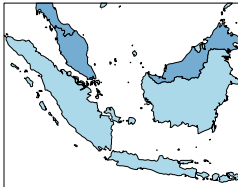
Persian Gulf



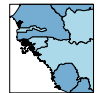
Balkan Peninsula



Southeast Asia



West Africa

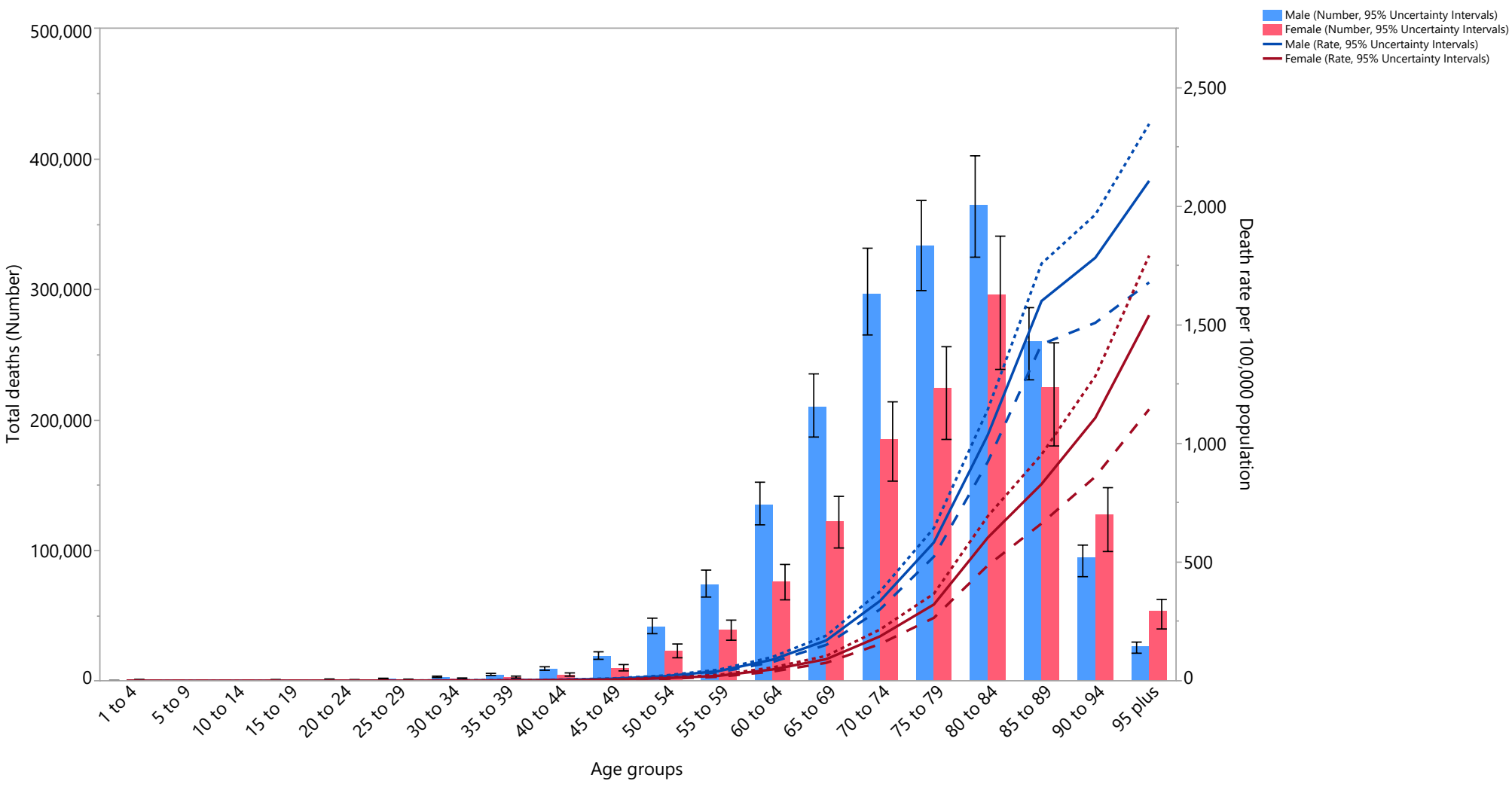


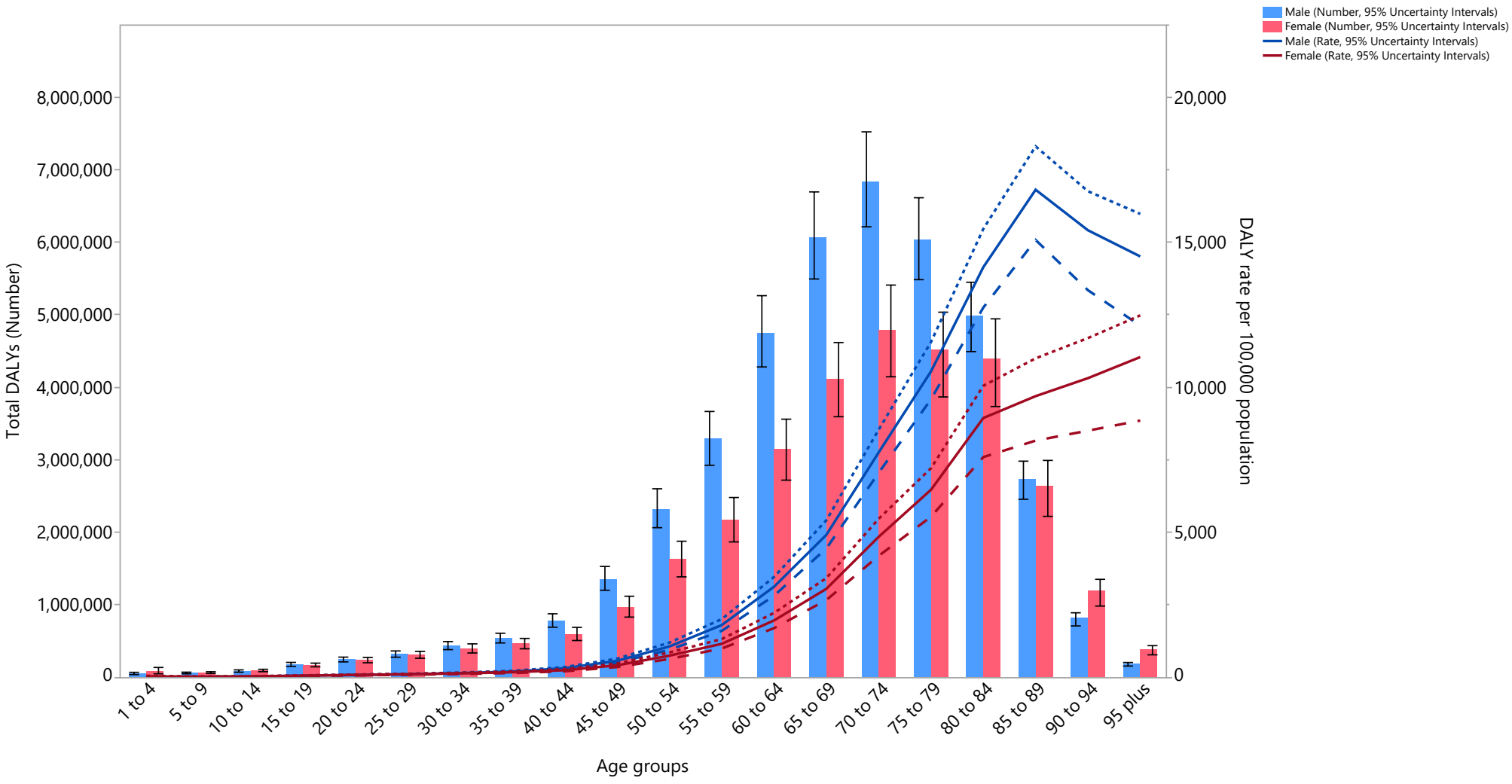
Eastern Mediterranean

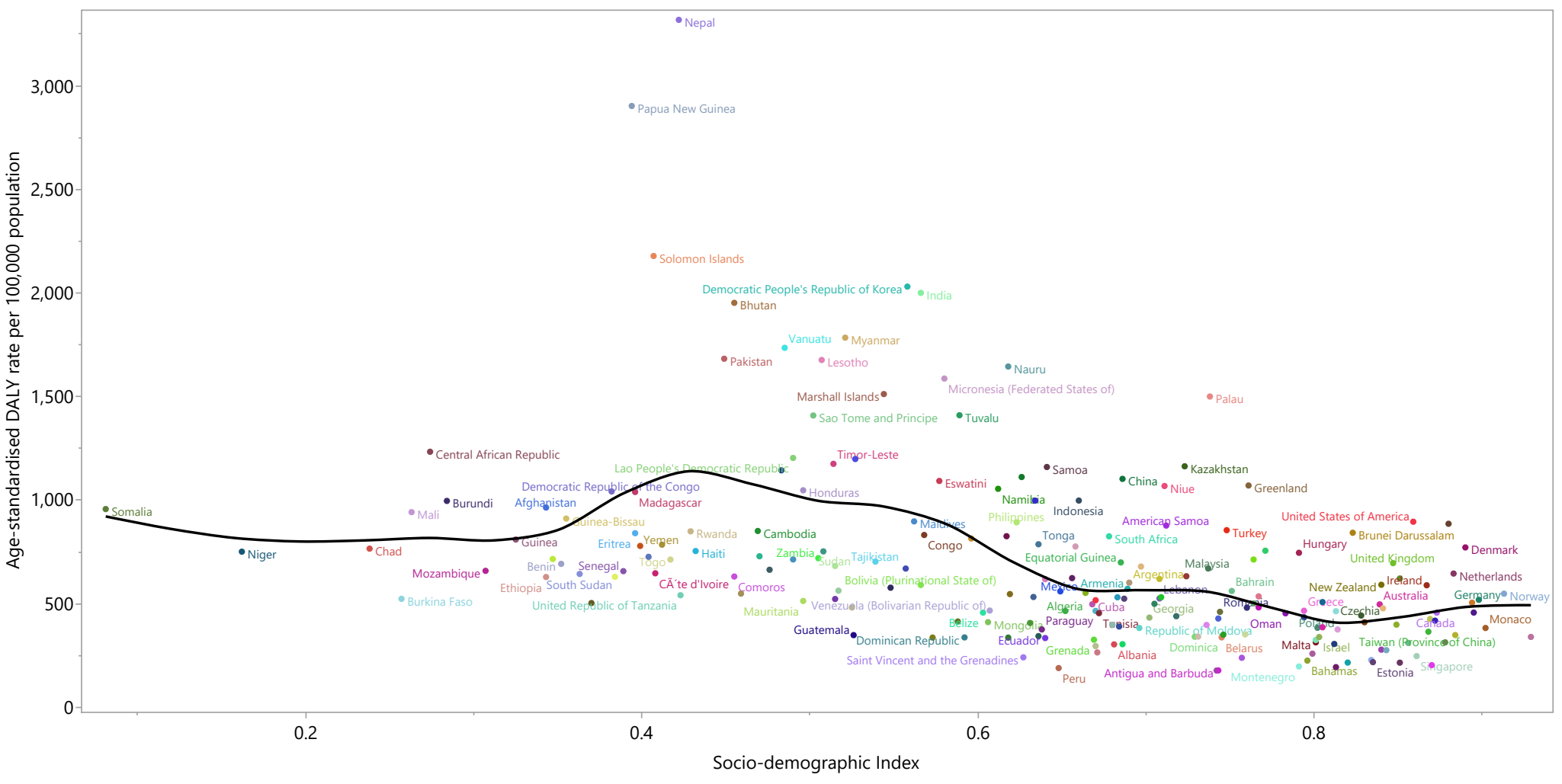


Northern Europe









GBD Regions

